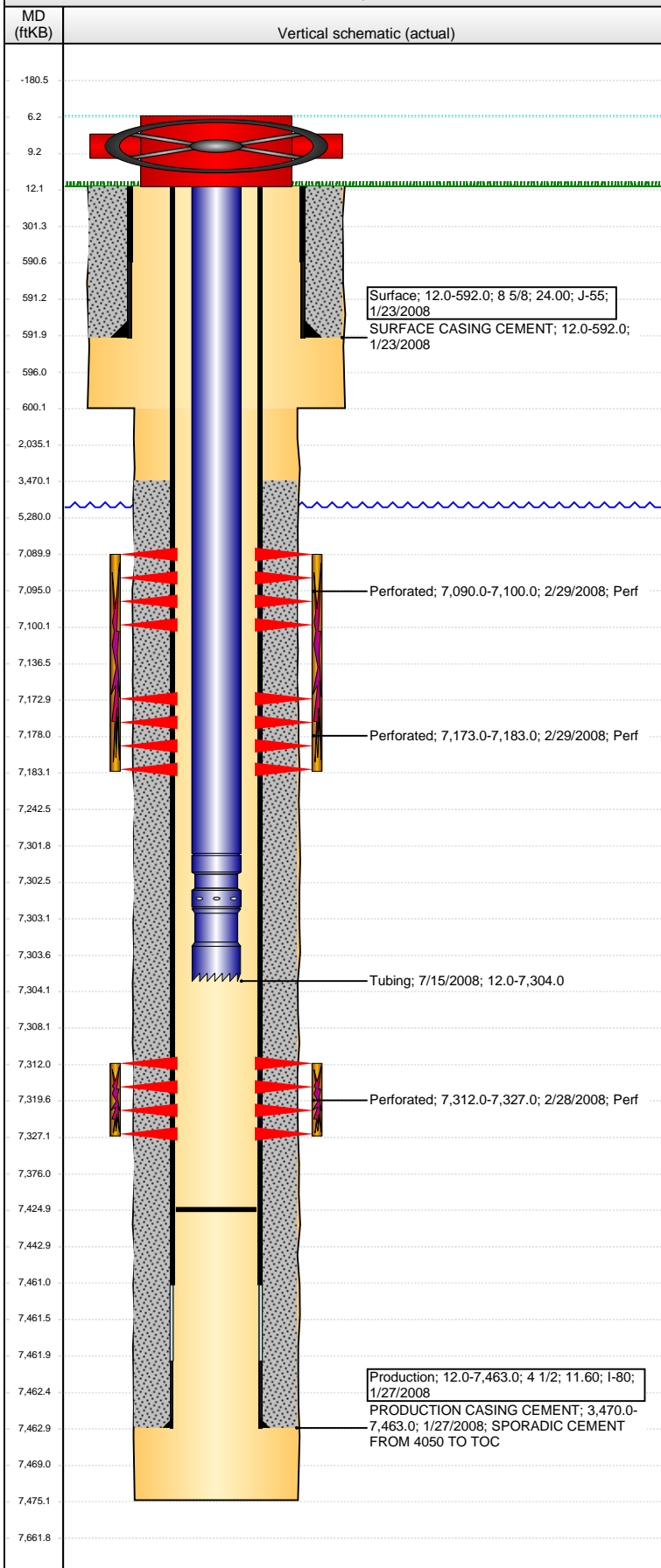


**Well Name: SCHMIDT 24-26**

DEVIATED - ORIGINAL HOLE, 11/4/2014 1:42:32 PM

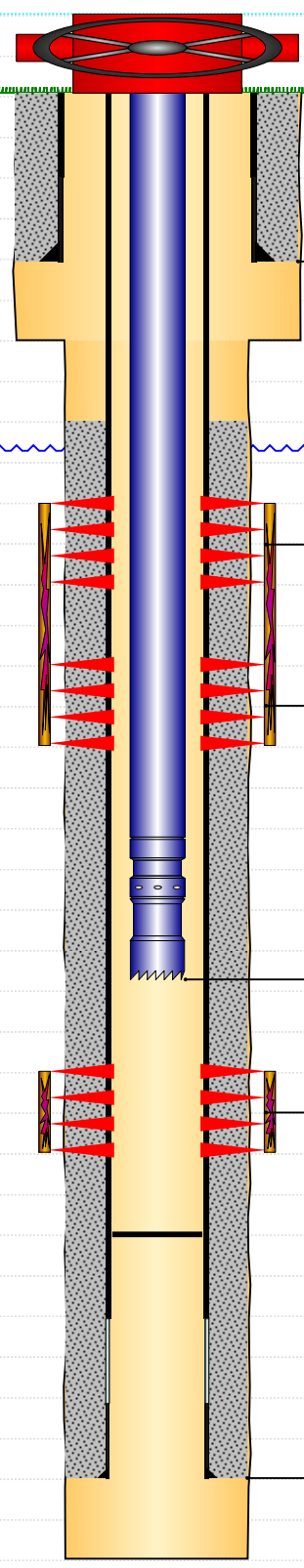


Well Header			
API	Business Unit	District	Well Config
05-123-24847	DJ BASIN	15	DEVIATED
Original KB Elevation (ft)	KB - GL / MSL (ftKB)	Spud Date	P & A Date
4,779.00	12.00	1/22/2008	
Comment			
Directions To Well			
Congressional Location			
Quarter 1	Quarter 2	Quarter 3	Quarter 4
		SE	NE
Section	Township	Twtnshp N...	Range
26	4	N	66
Rng E/W Dir			W
Bottom Hole Location			
North-South Distance (ft)	From N or S Line	East-West Distance (ft)	From E or W Line
2,566.0	FNL	1,197.0	FEL
Plug Back Total Depths			
Date	Depth (ftKB)	Method	Com
2/25/2008	7,420.0	CASED HOLE LOG	DEPTH LOGGER ON CBL
7/15/2008	7,425.0	TAG	TAG TO LAND TUBING
Wellbore Sections			
Section Des	Size (in)	Act Top, MD (ftKB)	Act Btm, MD (ftKB)
SURFACE	12 1/4	12.0	600.0
PRODUCTION	7 7/8	600.0	7,475.0
Zone Statuses			
Zone Name	Status Date	Status	Job
NIOBRARA	6/17/2008	PR	DRILLING/COMPLETION - ORIGINAL, 1/22/2008 00:00
CODELL	6/17/2008	PR	DRILLING/COMPLETION - ORIGINAL, 1/22/2008 00:00
Casing Strings			
Surface, 592.0ftKB			
Casing Description	Run Date	OD (in)	Wt/Len (l...)
Surface	1/23/2008	8 5/8	Grade J-55
Top, MD (ft...)	MD (ftKB)		
12.0	592.0		
Production, 7,463.0ftKB			
Casing Description	Run Date	OD (in)	Wt/Len (l...)
Production	1/27/2008	4 1/2	Grade I-80
Top, MD (ft...)	MD (ftKB)		
12.0	7,463.0		
Cement			
Description	Top Depth (ftKB)	Bottom Depth (ftKB)	
SURFACE CASING CEMENT	12.0	592.0	
Description	Top Depth (ftKB)	Bottom Depth (ftKB)	
PRODUCTION CASING CEMENT	3,470.0	7,463.0	
Tubing Components			
Item Des	OD (in)	Wt (lb/ft)	Grade
EUE 8rd Tubing	2 3/8	4.70	J-55
Seal Nipple	2 3/8		
Notched collar	2 3/8		
Jts	Len (ft)	Btm (ftKB)	Btm (TVD) (ftKB)
232	7,290.00	7,302.0	
1	1.00	7,303.0	
1	1.00	7,304.0	
Perforation Data			
Zone	Bnch/St g	Entered Shot Total	Top (ftKB)
NIOBRARA, ORIGINAL HOLE	B	30	7,090.00
NIOBRARA, ORIGINAL HOLE	C	30	7,173.00
CODELL, ORIGINAL HOLE		60	7,312.00
Btm (ftKB)	Date		
7,100.00	2/29/2008		
7,183.00	2/29/2008		
7,327.00	2/28/2008		
Stimulations & Treatments			
Date	Zone	Primary Job Type	
2/29/2008	CODELL, ORIGINAL HOLE	DRILLING/COMPLETION - ORIGINAL	
Technical Result	Tech Result Details	Tech Result Note	
Comment			
Date	Zone	Primary Job Type	
2/29/2008	NIOBRARA, ORIGINAL HOLE	DRILLING/COMPLETION - ORIGINAL	
Technical Result	Tech Result Details	Tech Result Note	
Comment			
Other In Hole			
Run Date	Des	OD (in)	Top (ftKB)
Btm (ftKB)			
Logs			
Date	Type	Top, MD (ftKB)	Btm, MD (ftKB)
1/27/2008	COMPENSATED DENSITY	3,700.0	7,463.0

**Well Name: SCHMIDT 24-26**

DEVIATED - ORIGINAL HOLE, 11/4/2014 1:42:34 PM

## Logs

MD (ftKB)	Vertical schematic (actual)	Date	Type	Top, MD (ftKB)	Btm, MD (ftKB)
		1/27/2008	INDUCTION	592.0	7,483.0
		2/25/2008	CBL/CCL/GR	3,300.0	7,417.0
-180.5	 <p>Surface; 12.0-592.0; 8 5/8; 24.00; J-55; 1/23/2008 SURFACE CASING CEMENT; 12.0-592.0; 1/23/2008</p> <p>Perforated; 7,090.0-7,100.0; 2/29/2008; Perf</p> <p>Perforated; 7,173.0-7,183.0; 2/29/2008; Perf</p> <p>Tubing; 7/15/2008; 12.0-7,304.0</p> <p>Perforated; 7,312.0-7,327.0; 2/28/2008; Perf</p> <p>Production; 12.0-7,463.0; 4 1/2; 11.60; I-80; 1/27/2008 PRODUCTION CASING CEMENT; 3,470.0-7,463.0; 1/27/2008; SPORADIC CEMENT FROM 4050 TO TOC</p>				
6.2					
9.2					
12.1					
301.3					
590.6					
591.2					
591.9					
596.0					
600.1					
2,035.1					
3,470.1					
5,280.0					
7,089.9					
7,095.0					
7,100.1					
7,136.5					
7,172.9					
7,178.0					
7,183.1					
7,242.5					
7,301.8					
7,302.5					
7,303.1					
7,303.6					
7,304.1					
7,308.1					
7,312.0					
7,319.6					
7,327.1					
7,376.0					
7,424.9					
7,442.9					
7,461.0					
7,461.5					
7,461.9					
7,462.4					
7,462.9					
7,469.0					
7,475.1					
7,661.8					