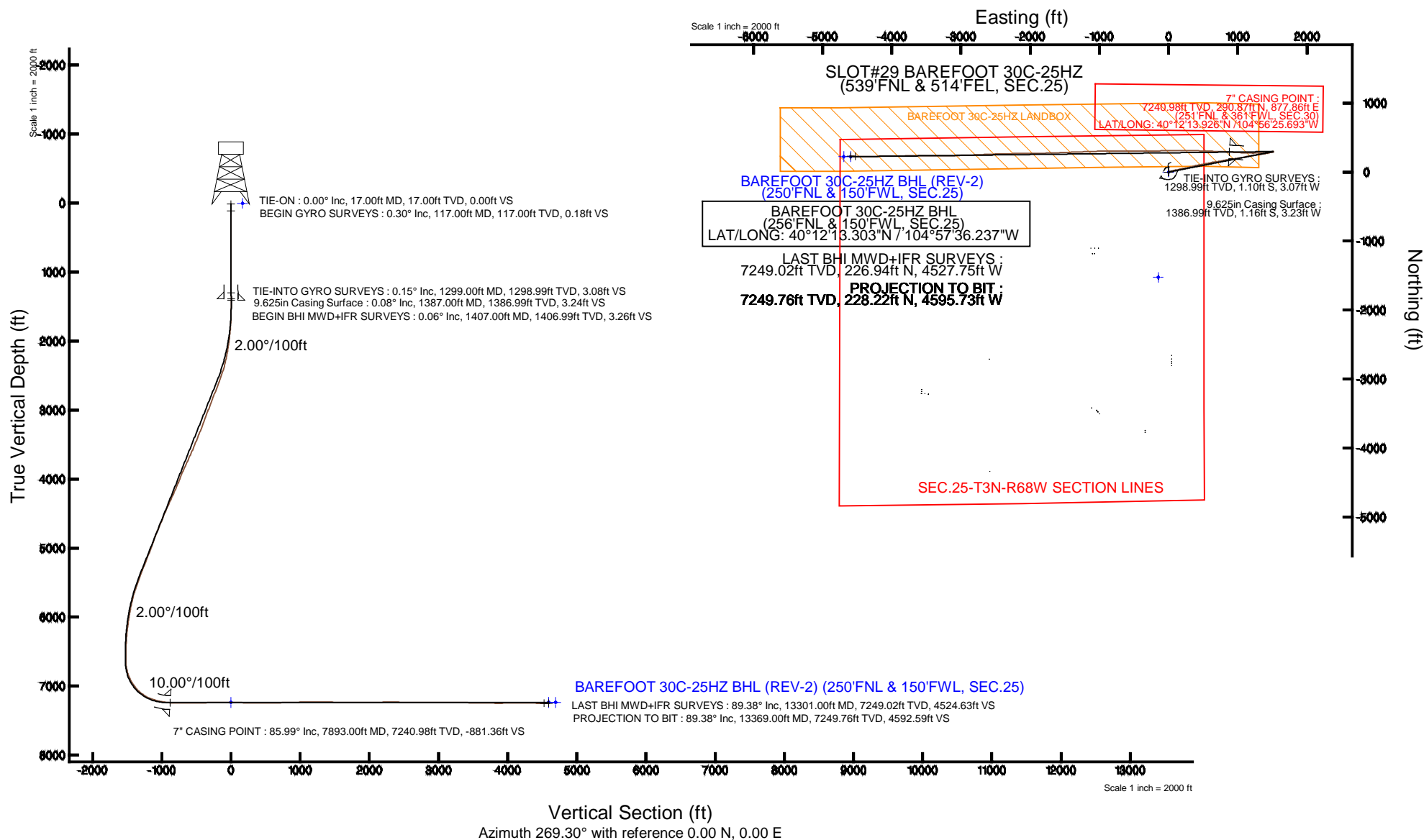


Location:	COLORADO	Slot:	SLOT#29 BAREFOOT 30C-25HZ (539'FNL & 514'FEL, SEC.25)
Field:	WELD COUNTY (KERR MCGEE)	Well:	BAREFOOT 30C-25HZ
Facility:	SEC.25-T3N-R68W	Wellbore:	BAREFOOT 30C-25HZ PWB

Plot reference wellpath is BAREFOOT 30C-25HZ (REV-B.0) PWP	
True vertical depths are referenced to XTREME 8 (17KB) (RKB)	Grid System: NAD83 / Lambert Colorado SP, Northern Zone (501), US feet
Measured depths are referenced to XTREME 8 (17KB) (RKB)	North Reference: True north
XTREME 8 (17KB) (RKB) to Mean Sea Level: 4908 feet	Scale: True distance
Mean Sea Level to Mud line (At Slot: SLOT#29 BAREFOOT 30C-25HZ (539FNL & 514FEL, SEC.25)): 0 feet	Depths are in feet
Coordinates are in feet referenced to Slot	Created by: amarcar on 9/29/2014



Actual Wellpath Report

BAREFOOT 30C-25HZ AWP

Page 1 of 6

REFERENCE WELLPATH IDENTIFICATION

Operator	KERR-MCGEE OIL & GAS ONSHORE LP	Slot	SLOT#29 BAREFOOT 30C-25HZ (539'FNL & 514'FEL, SEC.25)
Area	COLORADO	Well	BAREFOOT 30C-25HZ
Field	WELD COUNTY (KERR MCGEE)	Wellbore	BAREFOOT 30C-25HZ AWB
Facility	SEC.25-T3N-R68W		

REPORT SETUP INFORMATION

Projection System	NAD83 / Lambert Colorado SP, Northern Zone (501), US feet	Software System	WellArchitect® 4.0.0
North Reference	True	User	Amarcar
Scale	0.999957	Report Generated	9/28/2014 at 10:58:18 AM
Convergence at slot	n/a	Database/Source file	WellArchitectDB/_BAREFOOT_30C-25HZ_AWB.xml

WELLPATH LOCATION

	Local coordinates		Grid coordinates		Geographic coordinates	
	North[ft]	East[ft]	Easting[US ft]	Northing[US ft]	Latitude	Longitude
Slot Location	1089.28	1015.92	3155408.63	1317308.36	40°12'11.052"N	104°56'37.007"W
Facility Reference Pt			3154399.57	1316212.82	40°12'00.288"N	104°56'50.100"W
Field Reference Pt			3197771.84	1268891.29	40°04'09.600"N	104°47'36.000"W

WELLPATH DATUM

Calculation method	Minimum curvature	XTREME 8 (17'KB) (RKB) to Facility Vertical Datum	4908.00ft
Horizontal Reference Pt	Slot	XTREME 8 (17'KB) (RKB) to Mean Sea Level	4908.00ft
Vertical Reference Pt	XTREME 8 (17'KB) (RKB)	XTREME 8 (17'KB) (RKB) to Mud Line at Slot (SLOT#29 BAREFOOT 30C-25HZ (539'FNL & 514'FEL, SEC.25))	4908.00ft
MD Reference Pt	XTREME 8 (17'KB) (RKB)	Section Origin	N 0.00, E 0.00 ft
Field Vertical Reference	Mean Sea Level	Section Azimuth	269.30°

Actual Wellpath Report

BAREFOOT 30C-25HZ AWP

Page 2 of 6

REFERENCE WELLPATH IDENTIFICATION

Operator	KERR-MCGEE OIL & GAS ONSHORE LP	Slot	SLOT#29 BAREFOOT 30C-25HZ (539'FNL & 514'FEL, SEC.25)
Area	COLORADO	Well	BAREFOOT 30C-25HZ
Field	WELD COUNTY (KERR MCGEE)	Wellbore	BAREFOOT 30C-25HZ AWB
Facility	SEC.25-T3N-R68W		

WELLPATH DATA (136 stations) † = interpolated/extrapolated station

MD [ft]	Inclination [°]	Azimuth [°]	TVD [ft]	Vert Sect [ft]	North [ft]	East [ft]	Latitude	Longitude	DLS [°/100ft]	Comments
0.00†	0.000	222.730	0.00	0.00	0.00	0.00	40°12'11.052"N	104°56'37.007"W	0.00	
17.00	0.000	222.730	17.00	0.00	0.00	0.00	40°12'11.052"N	104°56'37.007"W	0.00	TIE-ON
117.00	0.300	222.730	117.00	0.18	-0.19	-0.18	40°12'11.050"N	104°56'37.009"W	0.30	BEGIN GYRO SURVEYS
217.00	0.300	239.980	217.00	0.59	-0.52	-0.58	40°12'11.047"N	104°56'37.015"W	0.09	
317.00	0.250	244.400	317.00	1.01	-0.74	-1.01	40°12'11.045"N	104°56'37.020"W	0.05	
417.00	0.110	205.350	417.00	1.25	-0.92	-1.24	40°12'11.043"N	104°56'37.023"W	0.18	
517.00	0.090	126.610	517.00	1.23	-1.06	-1.22	40°12'11.042"N	104°56'37.023"W	0.13	
617.00	0.080	305.110	617.00	1.23	-1.06	-1.22	40°12'11.042"N	104°56'37.023"W	0.17	
717.00	0.080	296.720	717.00	1.35	-0.99	-1.33	40°12'11.042"N	104°56'37.024"W	0.01	
817.00	0.180	297.590	817.00	1.55	-0.89	-1.54	40°12'11.043"N	104°56'37.027"W	0.10	
917.00	0.110	291.610	917.00	1.77	-0.78	-1.76	40°12'11.044"N	104°56'37.030"W	0.07	
1017.00	0.200	259.530	1017.00	2.04	-0.77	-2.03	40°12'11.044"N	104°56'37.033"W	0.12	
1117.00	0.270	220.310	1116.99	2.36	-0.99	-2.35	40°12'11.042"N	104°56'37.037"W	0.17	
1217.00	0.300	282.290	1216.99	2.77	-1.11	-2.76	40°12'11.041"N	104°56'37.043"W	0.29	
1299.00	0.150	252.990	1298.99	3.08	-1.10	-3.07	40°12'11.041"N	104°56'37.047"W	0.22	TIE-INTO GYRO SURVEYS
1407.00	0.060	230.650	1406.99	3.26	-1.17	-3.25	40°12'11.040"N	104°56'37.049"W	0.09	BEGIN BHI MWD+IFR SURVEYS
1499.00	0.060	75.290	1498.99	3.25	-1.19	-3.24	40°12'11.040"N	104°56'37.049"W	0.13	
1600.00	1.110	60.470	1599.99	2.35	-0.70	-2.34	40°12'11.045"N	104°56'37.037"W	1.04	
1691.00	2.580	66.330	1690.94	-0.31	0.56	0.31	40°12'11.058"N	104°56'37.003"W	1.63	
1783.00	4.040	77.570	1782.78	-5.39	2.09	5.37	40°12'11.073"N	104°56'36.938"W	1.73	
1874.00	5.300	77.010	1873.48	-12.64	3.72	12.59	40°12'11.089"N	104°56'36.845"W	1.39	
1966.00	7.150	77.270	1964.93	-22.39	5.94	22.32	40°12'11.111"N	104°56'36.719"W	2.01	
2058.00	8.570	74.350	2056.06	-34.61	9.05	34.51	40°12'11.141"N	104°56'36.562"W	1.60	
2150.00	10.290	71.340	2146.82	-49.05	13.53	48.89	40°12'11.186"N	104°56'36.377"W	1.94	
2242.00	12.060	73.290	2237.07	-66.11	18.92	65.88	40°12'11.239"N	104°56'36.158"W	1.97	
2333.00	13.580	76.510	2325.80	-85.67	24.15	85.38	40°12'11.291"N	104°56'35.907"W	1.85	
2425.00	16.990	79.470	2414.54	-109.45	29.13	109.10	40°12'11.340"N	104°56'35.601"W	3.80	
2517.00	18.840	78.450	2502.07	-137.29	34.56	136.88	40°12'11.394"N	104°56'35.243"W	2.04	
2609.00	20.660	77.870	2588.66	-167.79	40.94	167.30	40°12'11.457"N	104°56'34.851"W	1.99	
2700.00	22.340	80.340	2673.32	-200.61	47.22	200.05	40°12'11.519"N	104°56'34.429"W	2.10	
2792.00	22.610	79.510	2758.33	-235.31	53.37	234.67	40°12'11.579"N	104°56'33.983"W	0.45	
2884.00	21.410	78.070	2843.63	-269.21	60.07	268.49	40°12'11.646"N	104°56'33.547"W	1.43	

2976.00	21.110	73.890	2929.37	-301.65	68.13	300.84	40°12'11.725"N	104°56'33.130"W	1.68	
3068.00	21.000	73.420	3015.23	-333.48	77.44	332.56	40°12'11.817"N	104°56'32.721"W	0.22	
3159.00	20.620	75.400	3100.29	-364.72	86.13	363.69	40°12'11.903"N	104°56'32.320"W	0.88	
3251.00	20.750	78.070	3186.37	-396.43	93.58	395.31	40°12'11.977"N	104°56'31.912"W	1.03	
3342.00	22.530	79.400	3270.95	-429.42	100.12	428.23	40°12'12.041"N	104°56'31.488"W	2.03	
3427.00	22.010	80.120	3349.61	-461.19	105.85	459.92	40°12'12.098"N	104°56'31.080"W	0.69	
3513.00	22.090	79.710	3429.32	-493.04	111.50	491.71	40°12'12.154"N	104°56'30.670"W	0.20	
3598.00	22.860	78.540	3507.86	-525.02	117.64	523.62	40°12'12.214"N	104°56'30.259"W	1.05	
3683.00	23.750	80.410	3585.93	-558.15	123.77	556.68	40°12'12.275"N	104°56'29.833"W	1.36	
3768.00	24.630	76.660	3663.47	-592.35	130.71	590.79	40°12'12.344"N	104°56'29.393"W	2.08	
3853.00	24.330	77.400	3740.83	-626.77	138.61	625.12	40°12'12.422"N	104°56'28.951"W	0.50	
3938.00	25.060	82.260	3818.06	-661.77	144.86	660.05	40°12'12.483"N	104°56'28.500"W	2.54	
4023.00	24.120	81.780	3895.35	-696.86	149.77	695.07	40°12'12.532"N	104°56'28.049"W	1.13	

Actual Wellpath Report

BAREFOOT 30C-25HZ AWP

Page 3 of 6

REFERENCE WELLPATH IDENTIFICATION

Operator	KERR-MCGEE OIL & GAS ONSHORE LP	Slot	SLOT#29 BAREFOOT 30C-25HZ (539'FNL & 514'FEL, SEC.25)
Area	COLORADO	Well	BAREFOOT 30C-25HZ
Field	WELD COUNTY (KERR MCGEE)	Wellbore	BAREFOOT 30C-25HZ AWB
Facility	SEC.25-T3N-R68W		

WELLPATH DATA (136 stations)

MD [ft]	Inclination [°]	Azimuth [°]	TVD [ft]	Vert Sect [ft]	North [ft]	East [ft]	Latitude	Longitude	DLS [°/100ft]	Comments
4109.00	22.130	80.960	3974.44	-730.31	154.83	728.47	40°12'12.582"N	104°56'27.619"W	2.34	
4194.00	22.220	80.110	4053.15	-762.01	160.10	760.11	40°12'12.634"N	104°56'27.211"W	0.39	
4279.00	23.320	78.220	4131.53	-794.39	166.30	792.41	40°12'12.695"N	104°56'26.794"W	1.55	
4366.00	24.080	78.860	4211.19	-828.75	173.24	826.69	40°12'12.764"N	104°56'26.353"W	0.92	
4456.00	24.860	82.760	4293.11	-865.60	179.17	863.47	40°12'12.822"N	104°56'25.879"W	1.99	
4541.00	25.390	81.720	4370.07	-901.42	184.05	899.23	40°12'12.871"N	104°56'25.418"W	0.81	
4627.00	23.590	81.700	4448.33	-936.75	189.19	934.51	40°12'12.921"N	104°56'24.963"W	2.09	
4712.00	21.820	81.930	4526.74	-969.28	193.86	966.98	40°12'12.968"N	104°56'24.545"W	2.08	
4797.00	21.720	80.110	4605.67	-1000.47	198.78	998.11	40°12'13.016"N	104°56'24.143"W	0.80	
4882.00	24.050	80.390	4683.98	-1033.12	204.38	1030.69	40°12'13.071"N	104°56'23.723"W	2.74	
4967.00	23.240	79.530	4761.84	-1066.75	210.31	1064.26	40°12'13.130"N	104°56'23.291"W	1.04	
5053.00	20.870	78.640	4841.54	-1098.53	216.42	1095.97	40°12'13.190"N	104°56'22.882"W	2.78	
5140.00	20.270	78.880	4923.00	-1128.59	222.37	1125.95	40°12'13.249"N	104°56'22.496"W	0.70	
5225.00	19.670	80.080	5002.89	-1157.19	227.68	1154.49	40°12'13.302"N	104°56'22.128"W	0.85	
5311.00	20.810	80.180	5083.57	-1186.56	232.78	1183.80	40°12'13.352"N	104°56'21.750"W	1.33	
5396.00	21.950	80.340	5162.72	-1217.16	238.02	1214.34	40°12'13.404"N	104°56'21.357"W	1.34	
5481.00	21.850	81.000	5241.59	-1248.51	243.16	1245.62	40°12'13.455"N	104°56'20.953"W	0.31	
5566.00	22.500	82.250	5320.30	-1280.30	247.83	1277.36	40°12'13.501"N	104°56'20.544"W	0.94	
5654.00	21.230	78.300	5401.98	-1312.65	253.33	1309.65	40°12'13.555"N	104°56'20.128"W	2.21	
5739.00	18.890	79.050	5481.81	-1341.31	259.06	1338.23	40°12'13.612"N	104°56'19.760"W	2.77	
5824.00	18.720	81.450	5562.28	-1368.36	263.71	1365.23	40°12'13.658"N	104°56'19.412"W	0.93	
5909.00	17.490	82.840	5643.07	-1394.56	267.33	1391.39	40°12'13.693"N	104°56'19.075"W	1.53	
5994.00	13.970	82.730	5724.87	-1417.46	270.22	1414.25	40°12'13.722"N	104°56'18.780"W	4.14	
6080.00	12.320	80.400	5808.62	-1436.83	273.06	1433.60	40°12'13.750"N	104°56'18.531"W	2.01	
6165.00	11.340	73.910	5891.81	-1453.85	276.89	1450.57	40°12'13.788"N	104°56'18.312"W	1.94	
6250.00	10.100	69.970	5975.33	-1468.94	281.76	1465.60	40°12'13.836"N	104°56'18.118"W	1.69	
6335.00	8.600	68.370	6059.20	-1481.91	286.66	1478.51	40°12'13.884"N	104°56'17.952"W	1.79	
6419.00	7.240	71.560	6142.39	-1492.82	290.64	1489.37	40°12'13.924"N	104°56'17.812"W	1.70	
6504.00	6.050	72.850	6226.82	-1502.22	293.66	1498.73	40°12'13.953"N	104°56'17.691"W	1.41	
6591.00	4.260	79.480	6313.47	-1509.80	295.60	1506.29	40°12'13.973"N	104°56'17.594"W	2.17	
6679.00	2.890	95.420	6401.30	-1515.23	295.99	1511.71	40°12'13.977"N	104°56'17.524"W	1.91	
6764.00	2.600	143.250	6486.21	-1518.49	294.24	1515.00	40°12'13.959"N	104°56'17.482"W	2.64	

6849.00	1.740	167.490	6571.15	-1519.89	291.44	1516.43	40°12'13.932"N	104°56'17.463"W	1.46	
6891.00	1.440	207.610	6613.13	-1519.77	290.35	1516.33	40°12'13.921"N	104°56'17.464"W	2.68	
6934.00	2.820	271.550	6656.11	-1518.46	289.90	1515.02	40°12'13.916"N	104°56'17.481"W	5.91	
6976.00	6.990	271.530	6697.95	-1514.87	289.99	1511.43	40°12'13.917"N	104°56'17.528"W	9.93	
7019.00	10.860	265.960	6740.42	-1508.21	289.78	1504.77	40°12'13.915"N	104°56'17.613"W	9.21	
7062.00	14.770	262.490	6782.34	-1498.72	288.78	1495.29	40°12'13.905"N	104°56'17.736"W	9.26	
7104.00	18.120	261.030	6822.62	-1486.94	287.06	1483.53	40°12'13.888"N	104°56'17.887"W	8.04	
7147.00	22.200	263.340	6862.97	-1472.23	285.07	1468.85	40°12'13.869"N	104°56'18.076"W	9.67	
7189.00	25.670	264.700	6901.36	-1455.27	283.31	1451.91	40°12'13.851"N	104°56'18.295"W	8.37	
7232.00	29.630	266.040	6939.44	-1435.36	281.71	1432.02	40°12'13.835"N	104°56'18.551"W	9.32	
7275.00	33.610	266.420	6976.05	-1412.86	280.24	1409.53	40°12'13.821"N	104°56'18.841"W	9.27	
7318.00	38.270	267.570	7010.85	-1387.65	278.93	1384.33	40°12'13.808"N	104°56'19.166"W	10.95	
7362.00	42.510	266.990	7044.36	-1359.16	277.57	1355.86	40°12'13.795"N	104°56'19.533"W	9.67	

Actual Wellpath Report

BAREFOOT 30C-25HZ AWP

Page 4 of 6

REFERENCE WELLPATH IDENTIFICATION

Operator	KERR-MCGEE OIL & GAS ONSHORE LP	Slot	SLOT#29 BAREFOOT 30C-25HZ (539'FNL & 514'FEL, SEC.25)
Area	COLORADO	Well	BAREFOOT 30C-25HZ
Field	WELD COUNTY (KERR MCGEE)	Wellbore	BAREFOOT 30C-25HZ AWB
Facility	SEC.25-T3N-R68W		

WELLPATH DATA (136 stations) † = interpolated/extrapolated station

MD [ft]	Inclination [°]	Azimuth [°]	TVD [ft]	Vert Sect [ft]	North [ft]	East [ft]	Latitude	Longitude	DLS [°/100ft]	Comments
7405.00	46.620	267.710	7074.99	-1329.01	276.18	1325.73	40°12'13.781"N	104°56'19.921"W	9.63	
7447.00	50.820	268.270	7102.69	-1297.46	275.08	1294.19	40°12'13.770"N	104°56'20.327"W	10.05	
7490.00	55.700	268.670	7128.40	-1263.02	274.16	1259.75	40°12'13.761"N	104°56'20.771"W	11.37	
7533.00	60.920	270.050	7150.99	-1226.44	273.77	1223.18	40°12'13.757"N	104°56'21.243"W	12.44	
7575.00	65.570	271.800	7169.89	-1188.97	274.38	1185.69	40°12'13.763"N	104°56'21.726"W	11.68	
7618.00	69.000	271.880	7186.49	-1149.35	275.66	1146.06	40°12'13.776"N	104°56'22.237"W	7.98	
7662.00	73.130	272.270	7200.77	-1107.79	277.17	1104.47	40°12'13.791"N	104°56'22.772"W	9.42	
7705.00	76.670	272.890	7211.97	-1066.35	279.04	1063.01	40°12'13.809"N	104°56'23.307"W	8.35	
7749.00	79.120	273.460	7221.19	-1023.43	281.42	1020.06	40°12'13.833"N	104°56'23.860"W	5.71	
7793.00	79.730	273.870	7229.27	-980.30	284.19	976.89	40°12'13.860"N	104°56'24.417"W	1.66	
7835.00	82.920	274.100	7235.60	-938.92	287.07	935.48	40°12'13.889"N	104°56'24.951"W	7.61	
7847.00	84.000	273.930	7236.97	-927.04	287.91	923.59	40°12'13.897"N	104°56'25.104"W	9.11	
7893.00†	85.991	273.478	7240.98	-881.36	290.87	877.86	40°12'13.926"N	104°56'25.693"W	4.44	7" CASING POINT
7987.00	90.060	272.560	7244.22	-787.63	295.81	784.07	40°12'13.975"N	104°56'26.902"W	4.44	
8074.00	90.060	271.780	7244.13	-700.74	299.11	697.13	40°12'14.008"N	104°56'28.022"W	0.90	
8247.00	90.600	271.890	7243.13	-527.91	304.65	524.22	40°12'14.062"N	104°56'30.251"W	0.32	
8417.00	90.710	271.230	7241.19	-358.06	309.27	354.30	40°12'14.108"N	104°56'32.441"W	0.39	
8588.00	91.440	270.030	7237.98	-187.14	311.15	183.34	40°12'14.127"N	104°56'34.644"W	0.82	
8759.00	88.820	268.870	7237.59	-16.16	309.51	12.37	40°12'14.111"N	104°56'36.848"W	1.68	
8929.00	88.920	269.240	7240.94	153.81	306.71	-157.58	40°12'14.083"N	104°56'39.038"W	0.23	
9099.00	88.180	269.260	7245.25	323.75	304.48	-327.51	40°12'14.061"N	104°56'41.228"W	0.44	
9270.00	91.170	269.670	7246.22	494.73	302.89	-498.48	40°12'14.045"N	104°56'43.431"W	1.76	
9440.00	91.320	270.150	7242.52	664.68	302.62	-668.44	40°12'14.042"N	104°56'45.622"W	0.30	
9611.00	90.980	270.480	7239.09	835.62	303.56	-839.40	40°12'14.052"N	104°56'47.825"W	0.28	
9783.00	92.690	267.900	7233.58	1007.51	301.13	-1011.27	40°12'14.028"N	104°56'50.040"W	1.80	
9956.00	89.410	268.380	7230.41	1180.42	295.52	-1184.13	40°12'13.972"N	104°56'52.268"W	1.92	
10128.00	89.400	267.590	7232.20	1352.36	289.47	-1356.01	40°12'13.912"N	104°56'54.483"W	0.46	
10299.00	88.150	267.800	7235.85	1523.25	282.60	-1526.83	40°12'13.844"N	104°56'56.685"W	0.74	
10384.00	89.560	267.610	7237.55	1608.20	279.19	-1611.74	40°12'13.810"N	104°56'57.779"W	1.67	
10554.00	89.250	268.520	7239.32	1778.15	273.45	-1781.63	40°12'13.754"N	104°56'59.969"W	0.57	
10725.00	91.190	269.300	7238.66	1949.14	270.20	-1952.59	40°12'13.721"N	104°57'02.172"W	1.22	
10900.00	90.920	269.590	7235.44	2124.10	268.51	-2127.55	40°12'13.704"N	104°57'04.427"W	0.23	

11070.00	90.240	269.050	7233.72	2294.09	266.49	-2297.53	40°12'13.684"N	104°57'06.618"W	0.51	
11243.00	88.980	267.840	7234.89	2467.06	261.79	-2470.46	40°12'13.638"N	104°57'08.846"W	1.01	
11413.00	89.660	267.500	7236.91	2636.98	254.88	-2640.30	40°12'13.569"N	104°57'11.035"W	0.45	
11584.00	90.000	267.440	7237.42	2807.89	247.33	-2811.14	40°12'13.495"N	104°57'13.237"W	0.20	
11840.00	90.060	269.030	7237.29	3063.84	239.45	-3067.01	40°12'13.416"N	104°57'16.535"W	0.62	
12095.00	89.290	269.300	7238.73	3318.84	235.73	-3321.97	40°12'13.379"N	104°57'19.821"W	0.32	
12180.00	88.360	269.310	7240.48	3403.82	234.70	-3406.95	40°12'13.369"N	104°57'20.916"W	1.09	
12351.00	89.230	271.010	7244.07	3574.75	235.18	-3577.90	40°12'13.374"N	104°57'23.119"W	1.12	
12522.00	88.850	268.870	7246.94	3745.71	235.00	-3748.87	40°12'13.371"N	104°57'25.322"W	1.27	
12607.00	89.780	269.100	7247.95	3830.70	233.50	-3833.85	40°12'13.356"N	104°57'26.418"W	1.13	
12775.00	90.800	268.910	7247.10	3998.69	230.58	-4001.82	40°12'13.327"N	104°57'28.582"W	0.62	
13035.00	89.500	269.200	7246.42	4258.68	226.29	-4261.77	40°12'13.285"N	104°57'31.933"W	0.51	
13301.00	89.380	271.080	7249.02	4524.63	226.94	-4527.75	40°12'13.291"N	104°57'35.361"W	0.71	LAST BHI MWD+IFR SURVEYS

Actual Wellpath Report

BAREFOOT 30C-25HZ AWP

Page 5 of 6

REFERENCE WELLPATH IDENTIFICATION

Operator	KERR-MCGEE OIL & GAS ONSHORE LP	Slot	SLOT#29 BAREFOOT 30C-25HZ (539'FNL & 514'FEL, SEC.25)
Area	COLORADO	Well	BAREFOOT 30C-25HZ
Field	WELD COUNTY (KERR MCGEE)	Wellbore	BAREFOOT 30C-25HZ AWB
Facility	SEC.25-T3N-R68W		

WELLPATH DATA (136 stations)

MD [ft]	Inclination [°]	Azimuth [°]	TVD [ft]	Vert Sect [ft]	North [ft]	East [ft]	Latitude	Longitude	DLS [°/100ft]	Comments
13369.00	89.380	271.080	7249.76	4592.59	228.22	-4595.73	40°12'13.303"N	104°57'36.237"W	0.00	PROJECTION TO BIT

HOLE & CASING SECTIONS - Ref Wellbore: BAREFOOT 30C-25HZ AWB Ref Wellpath: BAREFOOT 30C-25HZ AWP

String/Diameter	Start MD [ft]	End MD [ft]	Interval [ft]	Start TVD [ft]	End TVD [ft]	Start N/S [ft]	Start E/W [ft]	End N/S [ft]	End E/W [ft]
13.5in Open Hole	17.00	1404.00	1387.00	17.00	1403.99	0.00	0.00	-1.17	-3.25
9.625in Casing Surface	17.00	1387.00	1370.00	17.00	1386.99	0.00	0.00	-1.16	-3.23
8.75in Open Hole	1404.00	7903.00	6499.00	1403.99	7241.64	-1.17	-3.25	291.46	867.90
7in Casing Intermediate	17.00	7893.00	7876.00	17.00	7240.98	0.00	0.00	290.87	877.86
6.125in Open Hole	7903.00	13369.00	5466.00	7241.64	7249.76	291.46	867.90	228.22	-4595.73

TARGETS

Name	MD [ft]	TVD [ft]	North [ft]	East [ft]	Grid East [US ft]	Grid North [US ft]	Latitude	Longitude	Shape
SEC.25-T3N-R68W SECTION LINES		4.00	-1526.01	-149.45	3155268.77	1315781.51	40°11'55.972"N	104°56'38.933"W	polygon
BAREFOOT 30C-25HZ BHL (REV-2) (250'FNL & 150'FWL, SEC.25)		7236.00	221.94	-4596.07	3150811.47	1317501.45	40°12'13.241"N	104°57'36.241"W	point
BAREFOOT 30C-25HZ BHL ON PLAT (REV-1) (250'FNL & 50'FWL, SEC.25)		7236.00	221.94	-4696.07	3150711.47	1317500.82	40°12'13.241"N	104°57'37.530"W	point
BAREFOOT 30C-25HZ LANDBOX		7236.00	0.00	0.00	3155408.63	1317308.36	40°12'11.052"N	104°56'37.007"W	polygon

WELLPATH COMPOSITION - Ref Wellbore: BAREFOOT 30C-25HZ AWB Ref Wellpath: BAREFOOT 30C-25HZ AWP

Start MD [ft]	End MD [ft]	Positional Uncertainty Model	Log Name/Comment	Wellbore
17.00	1299.00	Generic gyro - continuous (Standard)	MS ENERGY GYRO SURVEYS 13.5" <117-1299>	BAREFOOT 30C-25HZ AWB
1299.00	7847.00	NaviTrak (IFR)	BHI MWD+ IFR SURVEYS 8.75" <1407-7847>	BAREFOOT 30C-25HZ AWB

7847.00	13301.00	NaviTrak (IFR)	BHI MWD+IRF SURVEYS 6.125" <7987-13301>	BAREFOOT 30C-25HZ AWB
13301.00	13369.00	Blind Drilling (std)	Projection to bit	BAREFOOT 30C-25HZ AWB

Actual Wellpath Report

BAREFOOT 30C-25HZ AWP

Page 6 of 6

REFERENCE WELLPATH IDENTIFICATION

Operator	KERR-MCGEE OIL & GAS ONSHORE LP	Slot	SLOT#29 BAREFOOT 30C-25HZ (539'FNL & 514'FEL, SEC.25)
Area	COLORADO	Well	BAREFOOT 30C-25HZ
Field	WELD COUNTY (KERR MCGEE)	Wellbore	BAREFOOT 30C-25HZ AWB
Facility	SEC.25-T3N-R68W		

WELLPATH COMMENTS

MD [ft]	Inclination [°]	Azimuth [°]	TVD [ft]	Comment
17.00	0.000	222.730	17.00	TIE-ON
117.00	0.300	222.730	117.00	BEGIN GYRO SURVEYS
1299.00	0.150	252.990	1298.99	TIE-INTO GYRO SURVEYS
1407.00	0.060	230.650	1406.99	BEGIN BHI MWD+IFR SURVEYS
7893.00	85.991	273.478	7240.98	7" CASING POINT
13301.00	89.380	271.080	7249.02	LAST BHI MWD+IFR SURVEYS
13369.00	89.380	271.080	7249.76	PROJECTION TO BIT