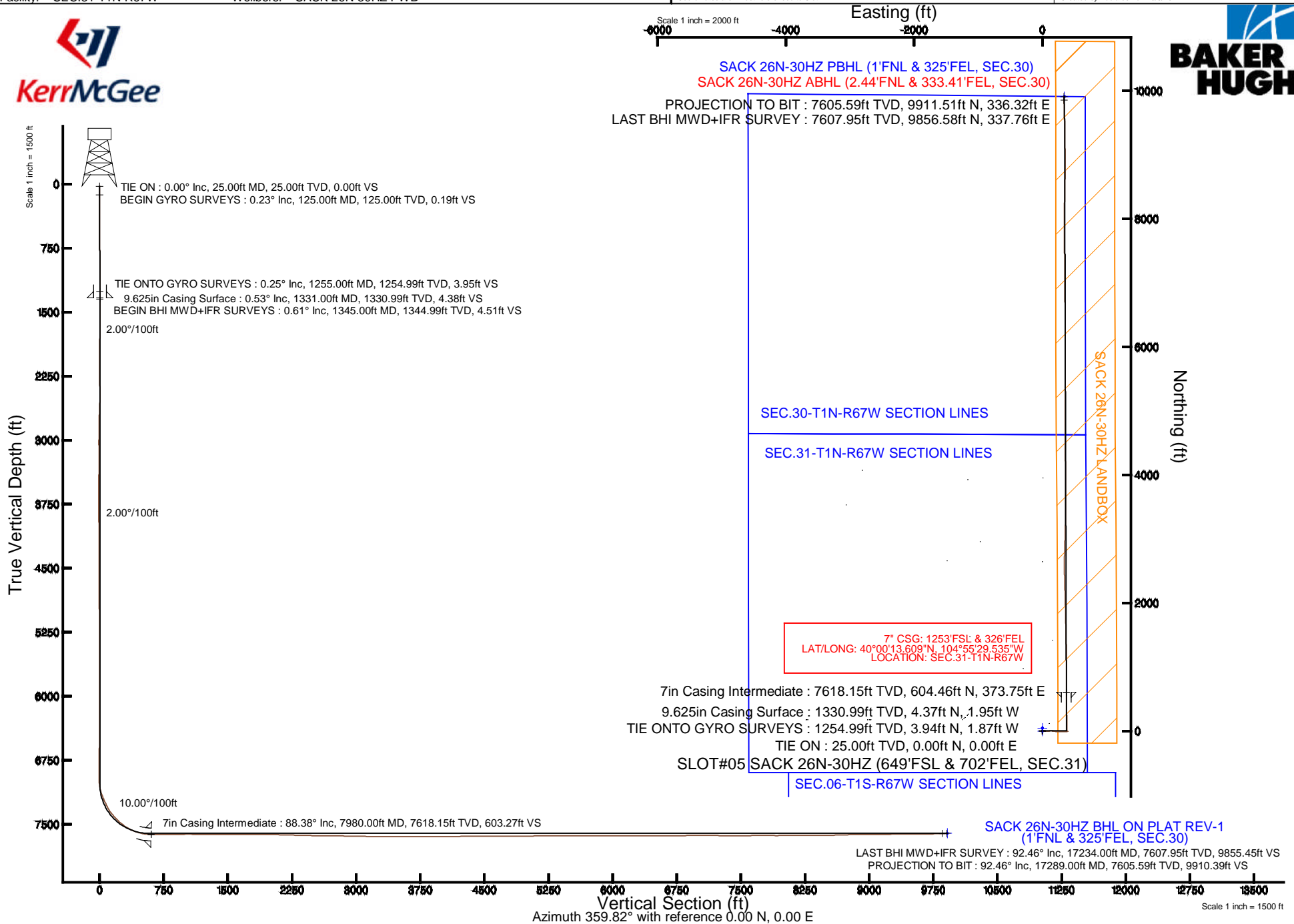


# KERR-MCGEE OIL & GAS ONSHORE LP

Location: COLORADO Slot: SLOT#05 SACK 26N-30HZ (649'FSL & 702'FEL, SEC.31)  
 Field: WELD COUNTY (KERR MCGEE) Well: SACK 26N-30HZ  
 Facility: SEC.31-T1N-R67W Wellbore: SACK 26N-30HZ PWB

Plot reference wellpath is SACK 26N-30HZ (REV-C.0) PWP

True vertical depths are referenced to PRECISION 595 (25KB) (RKB)	Grid System: NAD83 / Lambert Colorado SP, Northern Zone (501), US feet
Measured depths are referenced to PRECISION 595 (25KB) (RKB)	North Reference: True north
PRECISION 595 (25KB) (RKB) to Mean Sea Level: 5080 feet	Scale: True distance
Mean Sea Level to Mud line (At Slot: SLOT#05 SACK 26N-30HZ (649'FSL & 702'FEL, SEC.31)): 0 feet	Depths are in feet
Coordinates are in feet referenced to Slot	Created by: robiale01 on 10/9/2014



# Actual Wellpath Report

SACK 26N-30HZ AWP

Page 1 of 6

REFERENCE WELLPATH IDENTIFICATION			
Operator	<b>KERR-MCGEE OIL &amp; GAS ONSHORE LP</b>	Slot	<b>SLOT#05 SACK 26N-30HZ (649'FSL &amp; 702'FEL, SEC.31)</b>
Area	<b>COLORADO</b>	Well	<b>SACK 26N-30HZ</b>
Field	<b>WELD COUNTY (KERR MCGEE)</b>	Wellbore	<b>SACK 26N-30HZ AWB</b>
Facility	<b>SEC.31-T1N-R67W</b>		

REPORT SETUP INFORMATION			
Projection System	<b>NAD83 / Lambert Colorado SP, Northern Zone (501), US feet</b>	Software System	<b>WellArchitect® 4.0.0</b>
North Reference	<b>True</b>	User	<b>Robiale01</b>
Scale	<b>0.999966</b>	Report Generated	<b>10/9/2014 at 3:04:59 PM</b>
Convergence at slot	<b>n/a</b>	Database/Source file	<b>WellArchitectDB/SACK_26N-30HZ_AWB.xml</b>

WELLPATH LOCATION						
	Local coordinates		Grid coordinates		Geographic coordinates	
	North[ft]	East[ft]	Easting[US ft]	Northing[US ft]	Latitude	Longitude
Slot Location	-176.41	3681.78	3160744.61	1244139.57	<b>40°00'07.636"N</b>	<b>104°55'34.338"W</b>
Facility Reference Pt			3157061.92	1244292.69	<b>40°00'09.382"N</b>	<b>104°56'21.649"W</b>
Field Reference Pt			<b>3197771.84</b>	<b>1268891.29</b>	40°04'09.600"N	104°47'36.000"W

WELLPATH DATUM			
Calculation method	<b>Minimum curvature</b>	PRECISION 595 (25'KB) (RKB) to Facility Vertical Datum	<b>5080.00ft</b>
Horizontal Reference Pt	<b>Slot</b>	PRECISION 595 (25'KB) (RKB) to Mean Sea Level	<b>5080.00ft</b>
Vertical Reference Pt	<b>PRECISION 595 (25'KB) (RKB)</b>	PRECISION 595 (25'KB) (RKB) to Mud Line at Slot (SLOT#05 SACK 26N-30HZ (649'FSL & 702'FEL, SEC.31))	<b>5080.00ft</b>
MD Reference Pt	<b>PRECISION 595 (25'KB) (RKB)</b>	Section Origin	<b>N 0.00, E 0.00 ft</b>
Field Vertical Reference	<b>Mean Sea Level</b>	Section Azimuth	<b>1.94°</b>

# Actual Wellpath Report

SACK 26N-30HZ AWP

Page 2 of 6

REFERENCE WELLPATH IDENTIFICATION			
Operator	KERR-MCGEE OIL & GAS ONSHORE LP	Slot	SLOT#05 SACK 26N-30HZ (649'FSL & 702'FEL, SEC.31)
Area	COLORADO	Well	SACK 26N-30HZ
Field	WELD COUNTY (KERR MCGEE)	Wellbore	SACK 26N-30HZ AWB
Facility	SEC.31-T1N-R67W		

WELLPATH DATA (144 stations) † = interpolated/extrapolated station										
MD [ft]	Inclination [°]	Azimuth [°]	TVD [ft]	Vert Sect [ft]	North [ft]	East [ft]	Latitude	Longitude	DLS [°/100ft]	Comments
0.00†	0.000	344.940	0.00	0.00	0.00	0.00	40°00'07.636"N	104°55'34.338"W	0.00	
25.00	0.000	344.940	25.00	0.00	0.00	0.00	40°00'07.636"N	104°55'34.338"W	0.00	TIE ON
125.00	0.230	344.940	125.00	0.19	0.19	-0.05	40°00'07.638"N	104°55'34.339"W	0.23	BEGIN GYRO SURVEYS
225.00	0.210	0.810	225.00	0.57	0.57	-0.10	40°00'07.642"N	104°55'34.339"W	0.06	
325.00	0.210	334.780	325.00	0.91	0.92	-0.18	40°00'07.645"N	104°55'34.340"W	0.09	
425.00	0.320	346.480	425.00	1.35	1.36	-0.32	40°00'07.649"N	104°55'34.342"W	0.12	
525.00	0.220	341.020	525.00	1.79	1.81	-0.45	40°00'07.654"N	104°55'34.344"W	0.10	
625.00	0.040	322.070	625.00	2.00	2.02	-0.53	40°00'07.656"N	104°55'34.345"W	0.18	
725.00	0.210	332.330	725.00	2.19	2.21	-0.64	40°00'07.658"N	104°55'34.346"W	0.17	
825.00	0.270	328.120	824.99	2.54	2.57	-0.85	40°00'07.661"N	104°55'34.349"W	0.06	
925.00	0.260	338.280	924.99	2.94	2.98	-1.06	40°00'07.665"N	104°55'34.352"W	0.05	
1025.00	0.270	316.510	1024.99	3.32	3.36	-1.30	40°00'07.669"N	104°55'34.355"W	0.10	
1125.00	0.180	303.620	1124.99	3.57	3.62	-1.60	40°00'07.672"N	104°55'34.359"W	0.10	
1225.00	0.190	337.170	1224.99	3.80	3.86	-1.79	40°00'07.674"N	104°55'34.361"W	0.11	
1255.00	0.250	300.380	1254.99	3.88	3.94	-1.87	40°00'07.675"N	104°55'34.362"W	0.50	TIE ONTO GYRO SURVEYS
1345.00	0.610	13.750	1344.99	4.44	4.51	-1.92	40°00'07.681"N	104°55'34.363"W	0.65	BEGIN BHI MWD+IFR SURVEYS
1471.00	2.700	90.790	1470.94	5.15	5.12	1.21	40°00'07.687"N	104°55'34.323"W	2.09	
1566.00	3.510	88.650	1565.80	5.37	5.15	6.35	40°00'07.687"N	104°55'34.256"W	0.86	
1660.00	4.760	93.550	1659.55	5.42	4.98	13.12	40°00'07.685"N	104°55'34.169"W	1.38	
1755.00	6.200	99.940	1754.12	4.60	3.85	22.11	40°00'07.674"N	104°55'34.054"W	1.64	
1850.00	7.400	101.510	1848.45	2.87	1.74	33.16	40°00'07.653"N	104°55'33.912"W	1.28	
1945.00	8.430	94.320	1942.54	1.56	0.00	46.09	40°00'07.636"N	104°55'33.746"W	1.50	
2039.00	9.590	90.620	2035.38	1.46	-0.61	60.80	40°00'07.630"N	104°55'33.557"W	1.38	
2134.00	10.490	87.460	2128.93	2.32	-0.31	77.35	40°00'07.633"N	104°55'33.344"W	1.11	
2228.00	10.270	86.330	2221.39	3.80	0.61	94.26	40°00'07.642"N	104°55'33.127"W	0.32	
2323.00	11.420	84.910	2314.69	5.78	1.98	112.08	40°00'07.656"N	104°55'32.898"W	1.24	
2418.00	10.820	83.630	2407.91	8.23	3.81	130.31	40°00'07.674"N	104°55'32.664"W	0.68	
2512.00	10.660	94.250	2500.27	9.15	4.14	147.75	40°00'07.677"N	104°55'32.439"W	2.11	
2607.00	11.460	100.450	2593.51	7.40	1.78	165.79	40°00'07.654"N	104°55'32.208"W	1.51	
2702.00	10.880	99.490	2686.71	4.83	-1.41	183.92	40°00'07.622"N	104°55'31.975"W	0.64	
2797.00	10.210	98.170	2780.10	2.74	-4.08	201.10	40°00'07.596"N	104°55'31.754"W	0.75	
2891.00	10.730	92.860	2872.54	1.69	-5.71	218.08	40°00'07.580"N	104°55'31.536"W	1.17	
2984.00	9.940	93.240	2964.03	1.37	-6.59	234.74	40°00'07.571"N	104°55'31.322"W	0.85	
3074.00	10.850	88.700	3052.55	1.68	-6.84	250.97	40°00'07.568"N	104°55'31.113"W	1.36	
3164.00	10.000	88.200	3141.07	2.67	-6.40	267.25	40°00'07.573"N	104°55'30.904"W	0.95	
3253.00	9.310	87.050	3228.80	3.79	-5.79	282.16	40°00'07.579"N	104°55'30.712"W	0.80	
3343.00	9.470	92.530	3317.60	4.33	-5.74	296.83	40°00'07.579"N	104°55'30.524"W	1.01	
3433.00	9.520	94.920	3406.37	3.87	-6.70	311.64	40°00'07.570"N	104°55'30.333"W	0.44	
3523.00	8.650	95.660	3495.24	3.04	-8.01	325.79	40°00'07.557"N	104°55'30.152"W	0.98	
3612.00	8.150	96.100	3583.28	2.15	-9.34	338.72	40°00'07.544"N	104°55'29.985"W	0.57	
3702.00	6.250	87.160	3672.57	2.10	-9.78	349.96	40°00'07.539"N	104°55'29.841"W	2.44	
3792.00	5.300	88.680	3762.11	2.74	-9.44	359.01	40°00'07.543"N	104°55'29.725"W	1.07	
3882.00	5.390	76.330	3851.73	4.12	-8.34	367.27	40°00'07.554"N	104°55'29.619"W	1.28	
3972.00	2.970	72.840	3941.48	6.02	-6.66	373.61	40°00'07.570"N	104°55'29.537"W	2.70	

4062.00	2.090	73.060	4031.39	7.31	-5.49	377.41	40°00'07.582"N	104°55'29.488"W	0.98
---------	-------	--------	---------	------	-------	--------	----------------	-----------------	------

# Actual Wellpath Report

SACK 26N-30HZ AWP

Page 3 of 6

REFERENCE WELLPATH IDENTIFICATION			
Operator	KERR-MCGEE OIL & GAS ONSHORE LP	Slot	SLOT#05 SACK 26N-30HZ (649'FSL & 702'FEL, SEC.31)
Area	COLORADO	Well	SACK 26N-30HZ
Field	WELD COUNTY (KERR MCGEE)	Wellbore	SACK 26N-30HZ AWB
Facility	SEC.31-T1N-R67W		

WELLPATH DATA (144 stations) † = interpolated/extrapolated station										
MD [ft]	Inclination [°]	Azimuth [°]	TVD [ft]	Vert Sect [ft]	North [ft]	East [ft]	Latitude	Longitude	DLS [°/100ft]	Comments
4151.00	1.630	77.510	4120.34	8.15	-4.74	380.19	40°00'07.589"N	104°55'29.452"W	0.54	
4331.00	1.300	91.040	4300.29	8.82	-4.23	384.74	40°00'07.594"N	104°55'29.394"W	0.26	
4421.00	0.950	90.920	4390.27	8.85	-4.26	386.50	40°00'07.594"N	104°55'29.371"W	0.39	
4511.00	0.880	89.360	4480.26	8.90	-4.26	387.94	40°00'07.594"N	104°55'29.353"W	0.08	
4601.00	0.350	141.410	4570.25	8.72	-4.47	388.80	40°00'07.592"N	104°55'29.342"W	0.80	
4690.00	0.460	80.920	4659.25	8.58	-4.62	389.32	40°00'07.590"N	104°55'29.335"W	0.47	
4780.00	0.310	88.060	4749.25	8.67	-4.56	389.92	40°00'07.591"N	104°55'29.327"W	0.17	
4870.00	1.140	345.160	4839.24	9.54	-3.69	389.94	40°00'07.600"N	104°55'29.327"W	1.38	
5050.00	0.760	320.340	5019.22	12.15	-1.04	388.72	40°00'07.626"N	104°55'29.343"W	0.31	
5409.00	0.390	307.540	5378.20	14.64	1.54	386.23	40°00'07.651"N	104°55'29.375"W	0.11	
5769.00	0.140	171.540	5738.20	14.92	1.85	385.32	40°00'07.654"N	104°55'29.387"W	0.14	
6038.00	0.190	218.330	6007.20	14.24	1.18	385.09	40°00'07.648"N	104°55'29.390"W	0.05	
6397.00	0.430	132.960	6366.19	12.87	-0.21	385.71	40°00'07.634"N	104°55'29.382"W	0.13	
6756.00	0.280	186.420	6725.18	11.12	-2.00	386.60	40°00'07.616"N	104°55'29.370"W	0.10	
7026.00	0.040	93.020	6995.18	10.46	-2.66	386.62	40°00'07.610"N	104°55'29.370"W	0.11	
7071.00	6.160	352.660	7040.10	12.84	-0.26	386.33	40°00'07.633"N	104°55'29.374"W	13.71	
7116.00	12.490	352.090	7084.48	20.03	6.96	385.35	40°00'07.705"N	104°55'29.386"W	14.07	
7160.00	17.830	356.150	7126.93	31.42	18.40	384.24	40°00'07.818"N	104°55'29.401"W	12.37	
7205.00	21.670	356.700	7169.28	46.56	33.58	383.30	40°00'07.968"N	104°55'29.413"W	8.54	
7249.00	23.490	0.070	7209.91	63.41	50.46	382.84	40°00'08.135"N	104°55'29.418"W	5.07	
7294.00	25.760	2.690	7250.81	82.16	69.20	383.31	40°00'08.320"N	104°55'29.412"W	5.60	
7339.00	27.910	2.310	7290.96	102.47	89.49	384.19	40°00'08.520"N	104°55'29.401"W	4.79	
7384.00	31.650	359.760	7330.02	124.81	111.83	384.57	40°00'08.741"N	104°55'29.396"W	8.77	
7429.00	36.780	356.860	7367.22	150.04	137.11	383.78	40°00'08.991"N	104°55'29.406"W	11.96	
7473.00	40.030	358.030	7401.69	177.29	164.41	382.57	40°00'09.261"N	104°55'29.422"W	7.57	
7518.00	44.120	357.130	7435.09	207.35	194.53	381.29	40°00'09.558"N	104°55'29.438"W	9.19	
7563.00	47.170	358.030	7466.55	239.43	226.67	379.94	40°00'09.876"N	104°55'29.456"W	6.93	
7608.00	50.830	357.670	7496.06	273.30	260.60	378.66	40°00'10.211"N	104°55'29.472"W	8.16	
7653.00	56.010	357.560	7522.87	309.32	296.70	377.16	40°00'10.568"N	104°55'29.491"W	11.51	
7698.00	61.270	357.920	7546.28	347.63	335.08	375.65	40°00'10.947"N	104°55'29.511"W	11.71	
7743.00	63.950	358.170	7566.98	387.49	375.01	374.28	40°00'11.342"N	104°55'29.528"W	5.98	
7787.00	69.100	359.160	7584.50	427.76	415.34	373.35	40°00'11.741"N	104°55'29.540"W	11.88	
7832.00	75.480	359.950	7598.19	470.57	458.18	373.02	40°00'12.164"N	104°55'29.545"W	14.28	
7877.00	79.170	0.550	7608.06	514.45	502.08	373.22	40°00'12.598"N	104°55'29.542"W	8.30	
7922.00	83.960	0.620	7614.66	558.94	546.58	373.67	40°00'13.037"N	104°55'29.536"W	10.65	
7949.00	86.770	359.910	7616.84	585.83	573.49	373.80	40°00'13.303"N	104°55'29.535"W	10.73	
7980.00†	88.385	359.910	7618.15	616.78	604.46	373.75	40°00'13.609"N	104°55'29.535"W	5.21	7" CASING POINT
7997.00	89.270	359.910	7618.50	633.77	621.45	373.72	40°00'13.777"N	104°55'29.536"W	5.21	
8078.00	89.530	1.110	7619.35	714.74	702.44	374.44	40°00'14.578"N	104°55'29.526"W	1.52	
8168.00	90.430	0.710	7619.38	804.72	792.43	375.87	40°00'15.467"N	104°55'29.508"W	1.09	
8347.00	91.020	0.620	7617.11	983.66	971.40	377.95	40°00'17.236"N	104°55'29.481"W	0.33	
8527.00	88.460	358.230	7617.93	1163.46	1151.37	376.14	40°00'19.014"N	104°55'29.504"W	1.95	
8707.00	90.770	359.540	7619.14	1343.18	1331.31	372.64	40°00'20.792"N	104°55'29.549"W	1.48	
8886.00	89.600	358.960	7618.56	1521.98	1510.29	370.30	40°00'22.561"N	104°55'29.579"W	0.73	

9066.00	89.350	357.650	7620.21	1701.61	1690.20	364.97	40°00'24.339"N	104°55'29.648"W	0.74
---------	--------	---------	---------	---------	---------	--------	----------------	-----------------	------

# Actual Wellpath Report

SACK 26N-30HZ AWP

Page 4 of 6

REFERENCE WELLPATH IDENTIFICATION			
Operator	KERR-MCGEE OIL & GAS ONSHORE LP	Slot	SLOT#05 SACK 26N-30HZ (649'FSL & 702'FEL, SEC.31)
Area	COLORADO	Well	SACK 26N-30HZ
Field	WELD COUNTY (KERR MCGEE)	Wellbore	SACK 26N-30HZ AWP
Facility	SEC.31-T1N-R67W		

WELLPATH DATA (144 stations)										
MD [ft]	Inclination [°]	Azimuth [°]	TVD [ft]	Vert Sect [ft]	North [ft]	East [ft]	Latitude	Longitude	DLS [°/100ft]	Comments
9246.00	90.280	359.370	7620.79	1881.27	1870.13	360.29	40°00'26.117"N	104°55'29.708"W	1.09	
9425.00	89.570	358.380	7621.03	2060.01	2049.09	356.78	40°00'27.886"N	104°55'29.753"W	0.68	
9605.00	87.990	358.180	7624.86	2239.60	2228.96	351.38	40°00'29.663"N	104°55'29.822"W	0.88	
9784.00	88.640	358.720	7630.12	2418.19	2407.82	346.54	40°00'31.431"N	104°55'29.885"W	0.47	
9964.00	89.410	0.020	7633.18	2597.97	2587.78	344.56	40°00'33.209"N	104°55'29.910"W	0.84	
10144.00	89.380	1.150	7635.09	2777.91	2767.76	346.40	40°00'34.988"N	104°55'29.886"W	0.63	
10324.00	88.360	1.900	7638.64	2957.87	2947.65	351.19	40°00'36.766"N	104°55'29.825"W	0.70	
10503.00	89.690	1.660	7641.68	3136.84	3126.54	356.75	40°00'38.533"N	104°55'29.753"W	0.76	
10683.00	89.410	0.700	7643.09	3316.81	3306.49	360.45	40°00'40.312"N	104°55'29.706"W	0.56	
10862.00	90.090	0.200	7643.88	3495.75	3485.48	361.86	40°00'42.081"N	104°55'29.687"W	0.47	
11042.00	90.120	0.060	7643.55	3675.66	3665.48	362.27	40°00'43.859"N	104°55'29.682"W	0.08	
11222.00	89.750	359.520	7643.75	3855.53	3845.48	361.61	40°00'45.638"N	104°55'29.691"W	0.36	
11312.00	90.520	359.880	7643.54	3945.46	3935.48	361.14	40°00'46.528"N	104°55'29.697"W	0.94	
11491.00	90.250	359.420	7642.34	4124.31	4114.47	360.04	40°00'48.296"N	104°55'29.711"W	0.30	
11671.00	90.650	359.560	7640.92	4304.14	4294.46	358.44	40°00'50.075"N	104°55'29.731"W	0.24	
11851.00	90.270	359.950	7639.48	4484.00	4474.45	357.67	40°00'51.854"N	104°55'29.741"W	0.30	
12031.00	89.720	359.960	7639.49	4663.89	4654.45	357.53	40°00'53.633"N	104°55'29.743"W	0.31	
12210.00	90.520	0.100	7639.12	4842.79	4833.44	357.62	40°00'55.402"N	104°55'29.742"W	0.45	
12390.00	90.610	359.860	7637.34	5022.68	5013.44	357.56	40°00'57.180"N	104°55'29.742"W	0.14	
12569.00	90.950	359.230	7634.91	5201.50	5192.41	356.14	40°00'58.949"N	104°55'29.761"W	0.40	
12749.00	90.400	0.760	7632.78	5381.38	5372.39	356.12	40°01'00.728"N	104°55'29.761"W	0.90	
12839.00	89.380	0.570	7632.96	5471.36	5462.39	357.17	40°01'01.617"N	104°55'29.747"W	1.15	
13018.00	89.260	0.030	7635.08	5650.27	5641.37	358.10	40°01'03.386"N	104°55'29.735"W	0.31	
13198.00	90.310	359.830	7635.76	5830.16	5821.37	357.88	40°01'05.165"N	104°55'29.738"W	0.59	
13377.00	90.150	359.100	7635.04	6008.99	6000.36	356.21	40°01'06.933"N	104°55'29.760"W	0.42	
13557.00	90.000	359.400	7634.80	6188.79	6180.34	353.86	40°01'08.712"N	104°55'29.790"W	0.19	
13736.00	89.420	0.390	7635.71	6367.67	6359.33	353.53	40°01'10.481"N	104°55'29.794"W	0.64	
13916.00	90.520	359.770	7635.80	6547.57	6539.33	353.78	40°01'12.260"N	104°55'29.791"W	0.70	
14005.00	91.290	359.720	7634.40	6636.49	6628.32	353.38	40°01'13.139"N	104°55'29.796"W	0.87	
14095.00	90.770	358.770	7632.78	6726.37	6718.29	352.20	40°01'14.028"N	104°55'29.811"W	1.20	
14185.00	90.210	359.140	7632.01	6816.25	6808.28	350.56	40°01'14.917"N	104°55'29.832"W	0.75	
14275.00	91.070	359.490	7631.00	6906.15	6898.26	349.48	40°01'15.807"N	104°55'29.846"W	1.03	
14364.00	90.330	359.760	7629.92	6995.07	6987.25	348.90	40°01'16.686"N	104°55'29.853"W	0.89	
14454.00	89.160	0.340	7630.32	7085.01	7077.25	348.98	40°01'17.576"N	104°55'29.852"W	1.45	
14544.00	89.780	359.870	7631.15	7174.96	7167.25	349.14	40°01'18.465"N	104°55'29.850"W	0.86	
14723.00	89.250	359.020	7632.67	7353.78	7346.23	347.41	40°01'20.234"N	104°55'29.872"W	0.56	
14813.00	90.000	359.160	7633.25	7443.67	7436.21	345.98	40°01'21.123"N	104°55'29.891"W	0.85	
14903.00	90.430	359.180	7632.92	7533.56	7526.20	344.68	40°01'22.012"N	104°55'29.908"W	0.48	
14992.00	91.080	359.130	7631.74	7622.45	7615.19	343.36	40°01'22.892"N	104°55'29.924"W	0.73	
15172.00	89.410	359.050	7630.97	7802.22	7795.16	340.50	40°01'24.670"N	104°55'29.961"W	0.93	
15351.00	90.220	1.080	7631.55	7981.11	7974.14	340.71	40°01'26.439"N	104°55'29.958"W	1.22	
15531.00	90.280	1.050	7630.77	8161.09	8154.11	344.05	40°01'28.217"N	104°55'29.915"W	0.04	
15710.00	90.090	0.960	7630.19	8340.06	8333.08	347.19	40°01'29.986"N	104°55'29.875"W	0.12	
15890.00	90.950	1.130	7628.56	8520.03	8513.04	350.48	40°01'31.764"N	104°55'29.833"W	0.49	

16069.00	92.090	1.250	7623.81	8698.95	8691.94	354.19	40°01'33.532"N	104°55'29.785"W	0.64
----------	--------	-------	---------	---------	---------	--------	----------------	-----------------	------

REFERENCE WELLPATH IDENTIFICATION			
Operator	KERR-MCGEE OIL & GAS ONSHORE LP	Slot	SLOT#05 SACK 26N-30HZ (649'FSL & 702'FEL, SEC.31)
Area	COLORADO	Well	SACK 26N-30HZ
Field	WELD COUNTY (KERR MCGEE)	Wellbore	SACK 26N-30HZ AWB
Facility	SEC.31-T1N-R67W		

WELLPATH DATA (144 stations)										
MD [ft]	Inclination [°]	Azimuth [°]	TVD [ft]	Vert Sect [ft]	North [ft]	East [ft]	Latitude	Longitude	DLS [°/100ft]	Comments
16249.00	90.060	359.480	7620.43	8878.83	8871.89	355.34	40°01'35.311"N	104°55'29.770"W	1.50	
16428.00	90.740	359.090	7619.18	9057.64	9050.87	353.10	40°01'37.079"N	104°55'29.799"W	0.44	
16607.00	90.670	359.350	7616.98	9236.42	9229.84	350.67	40°01'38.848"N	104°55'29.830"W	0.15	
16786.00	91.470	359.060	7613.64	9415.18	9408.79	348.18	40°01'40.616"N	104°55'29.862"W	0.48	
16876.00	89.320	358.750	7613.02	9505.05	9498.76	346.46	40°01'41.506"N	104°55'29.884"W	2.41	
16966.00	90.030	358.890	7613.53	9594.91	9588.74	344.61	40°01'42.395"N	104°55'29.908"W	0.80	
17056.00	90.740	358.440	7612.92	9684.76	9678.71	342.51	40°01'43.284"N	104°55'29.935"W	0.93	
17234.00	92.460	358.500	7607.95	9862.36	9856.58	337.76	40°01'45.042"N	104°55'29.996"W	0.97	LAST BHI MWD+IFR SURVEY
17289.00	92.460	358.500	7605.59	9917.21	9911.51	336.32	40°01'45.584"N	104°55'30.014"W	0.00	PROJECTION TO BIT

HOLE & CASING SECTIONS - Ref Wellbore: SACK 26N-30HZ AWB Ref Wellpath: SACK 26N-30HZ AWP										
String/Diameter	Start MD [ft]	End MD [ft]	Interval [ft]	Start TVD [ft]	End TVD [ft]	Start N/S [ft]	Start E/W [ft]	End N/S [ft]	End E/W [ft]	
13.5in Open Hole	25.00	1331.00	1306.00	25.00	1330.99	0.00	0.00	4.37	-1.95	
9.625in Casing Surface	25.00	1331.00	1306.00	25.00	1330.99	0.00	0.00	4.37	-1.95	
8.75in Open Hole	1331.00	7997.00	6666.00	1330.99	7618.50	4.37	-1.95	621.45	373.72	
7in Casing Intermediate	25.00	7980.00	7955.00	25.00	7618.15	0.00	0.00	604.46	373.75	
6.125in Open Hole	7997.00	17289.00	9292.00	7618.50	7605.59	621.45	373.72	9911.51	336.32	

WELLPATH COMPOSITION - Ref Wellbore: SACK 26N-30HZ AWB Ref Wellpath: SACK 26N-30HZ AWP				
Start MD [ft]	End MD [ft]	Positional Uncertainty Model	Log Name/Comment	Wellbore
25.00	1255.00	Generic gyro - continuous (Standard)	MS GYRO SURVEYS <125-1255>	SACK 26N-30HZ AWB
1255.00	7997.00	NaviTrak (MAGCORR,IFR)	BHI NAVITRAK MWD+IFR 8 3/4" <1345-7997>	SACK 26N-30HZ AWB
7997.00	17234.00	NaviTrak (MAGCORR,IFR)	BHI NAVITRAK MWD+IFR 6 1/8" <8078-17234>	SACK 26N-30HZ AWB
17234.00	17289.00	Blind Drilling (std)	Projection to bit	SACK 26N-30HZ AWB



# Actual Wellpath Report

SACK 26N-30HZ AWP

Page 6 of 6



REFERENCE WELLPATH IDENTIFICATION			
Operator	KERR-MCGEE OIL & GAS ONSHORE LP	Slot	SLOT#05 SACK 26N-30HZ (649'FSL & 702'FEL, SEC.31)
Area	COLORADO	Well	SACK 26N-30HZ
Field	WELD COUNTY (KERR MCGEE)	Wellbore	SACK 26N-30HZ AWB
Facility	SEC.31-T1N-R67W		

WELLPATH COMMENTS				
MD [ft]	Inclination [°]	Azimuth [°]	TVD [ft]	Comment
25.00	0.000	344.940	25.00	TIE ON
125.00	0.230	344.940	125.00	BEGIN GYRO SURVEYS
1255.00	0.250	300.380	1254.99	TIE ONTO GYRO SURVEYS
1345.00	0.610	13.750	1344.99	BEGIN BHI MWD+IFR SURVEYS
7980.00	88.385	359.910	7618.15	7" CASING POINT
17234.00	92.460	358.500	7607.95	LAST BHI MWD+IFR SURVEY
17289.00	92.460	358.500	7605.59	PROJECTION TO BIT