

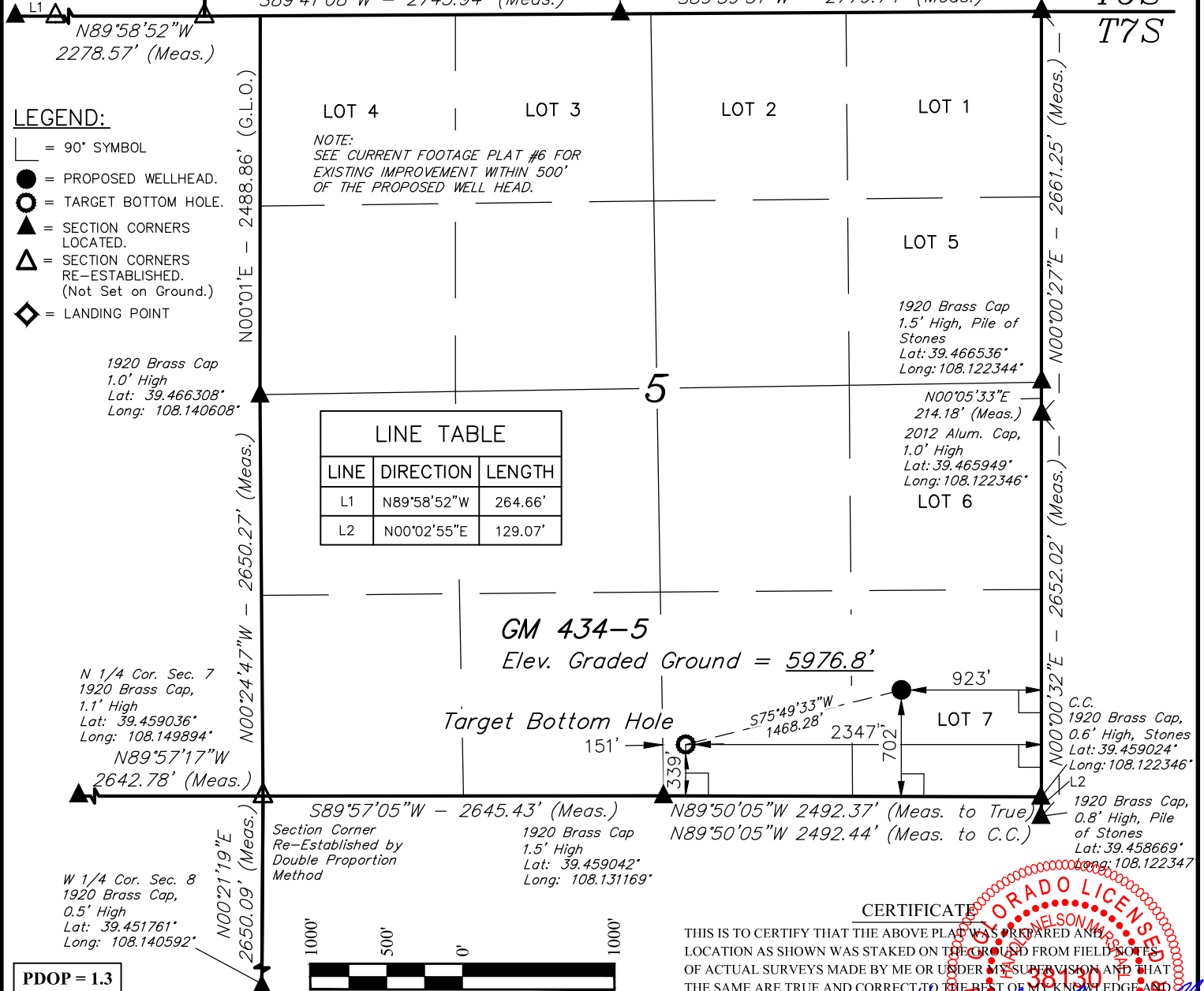
T7S, R96W, 6th P.M.

W.C. 1912 Brass
Cap, 0.7' High
Lat: 39.473161°
Long: 108.150919°
True Position

W 1/4 Cor. Sec. 32
Alum Cap, #17485,
1.5' High, Pile of Stones
Lat: 39.480372°
Long: 108.141708°
Section Corner
Re-Established by
Single Proportion
Method (Not Set)

1912 Brass Cap
0.9' High
Lat: 39.473206°
Long: 108.132189°

1912 Brass Cap
1.4' High, Pile of
Stones, Steel Rod
Lat: 39.473253°
Long: 108.122347°



PDOP = 1.3

NAD 83 (TARGET BOTTOM HOLE)	NAD 83 (SURFACE LOCATION)
LATITUDE = 39°27'35.90" (39.459972)	LATITUDE = 39°27'39.45" (39.460958)
LONGITUDE = 108°07'50.36" (108.130656)	LONGITUDE = 108°07'32.22" (108.125617)
STATE PLANE NAD 83 COLO. CENT.	STATE PLANE NAD 83 COLO. CENT.
N: 1603177.19 E: 2257351.54	N: 1603495.61 E: 2258784.39

CERTIFICATE

THIS IS TO CERTIFY THAT THE ABOVE PLAT WAS PREPARED AND LOCATION AS SHOWN WAS STAKED ON THE GROUND FROM FIELD NOTES OF ACTUAL SURVEYS MADE BY ME OR UNDER MY SUPERVISION AND THAT THE SAME ARE TRUE AND CORRECT TO THE BEST OF MY KNOWLEDGE AND BELIEF.

PLAT #1

REGISTERED LAND SURVEYOR
REGISTRATION NO. 38130
STATE OF COLORADO 08-15-14

BASIS OF BEARINGS
BASIS OF BEARINGS IS A G.P.S. OBSERVATION

BASIS OF ELEVATION

SPOT ELEVATION AT THE NORTHWEST CORNER OF SECTION 30, T5S, R95W, 6th P.M., TAKEN FROM THE FORKED GULCH, QUADRANGLE, COLORADO, GARFIELD COUNTY, 7.5 MINUTE QUAD. (TOPOGRAPHIC MAP) PUBLISHED BY THE UNITED STATES DEPARTMENT OF THE INTERIOR, GEOLOGICAL SURVEY. SAID ELEVATION IS MARKED AS BEING 5966 FEET.

WPX Energy Rocky Mountain, LLC

GM 434-5
LOT 7, SECTION 5, T7S, R96W, 6th P.M.
GARFIELD COUNTY, COLORADO

SURVEYED BY: BRIAN BAKER, J.B.	DATE: 05-08-13
DRAWN BY: M.D.	DATE DRAWN: 07-31-14
SCALE: 1" = 1000'	REVISED: 08-11-14 M.D.

WELL LOCATION PLAT



UELS, LLC
Corporate Office * 85 South 200 East
Vernal, UT 84078 * (435) 789-1017

