



# Bison Oil Well Cementing Single Cement Surface Pipe

Date: 8/6/2014

Invoice # 25029

API# 05-123-39625

Foreman: Calvin Reimers

**Customer:** Anadarko Petroleum Corporation

**Well Name:** Sack 1C-30HZ

County: Weld  
State: Colorado

Sec: 31  
Twp: 1N  
Range: 67W

Consultant: Allen  
Rig Name & Number: Major 42  
Distance To Location: 42 Miles  
Units On Location: 4023-3104/4019-3204  
Time Requested: 330pm  
Time Arrived On Location: 345pm  
Time Left Location: 1:00 AM

## WELL DATA

Casing Size OD (in) : 9.625  
Casing Weight (lb) : 36.00  
Casing Depth (ft.) : 1,294  
Total Depth (ft) : 1305  
Open Hole Diameter (in.) : 13.50  
Conductor Length (ft) :  
Conductor ID :  
Shoe Joint Length (ft) : 42  
Landing Joint (ft) : 8

Max Rate: 7  
Max Pressure: 2500

## Cement Data

Cement Name: BFN III  
Cement Density (lb/gal) : 14.2  
Cement Yield (cuft) : 1.49  
Gallons Per Sack: 7.48  
% Excess: 25%  
Displacement Fluid lb/gal: 8.3  
BBL to Pit: 19  
Fluid Ahead (bbls): 30.0  
H2O Wash Up (bbls): 20.0

Spacer Ahead Makeup  
30BBLS H2O+Dye in 2nd 10BBLS

Casing ID

8.921

Casing Grade

J-55 only used

## Calculated Results

**cuft of Shoe** 18.37 cuft

(Casing ID Squared) X (.005454) X (Shoe Joint ft)

**cuft of Conductor** 0.00 cuft

(Conductor Width Squared) -(Casing Size OD Squared) X (.005454) X (Conductor Length ft)

**cuft of Casing** 791.28 cuft

(Open Hole Squared)-(Casing Size Squared) X (.005454) X (Casing Depth - Conductor Length )

**Total Slurry Volume** 809.65 cuft

(cuft of Shoe) + (cuft of Conductor) + (cuft of Casing)

**bbls of Slurry** 144.20 bbls

(Total Slurry Volume) X (.1781)

**Sacks Needed** 543 sk

(Total Slurry Volume) ÷ (Cement Yield) X (% Excess Cement)

**Mix Water** 96.78 bbls

(Sacks Needed) X (Gallons Per Sack) ÷ 42

**Displacement:** 97.40 bbls

(Casing ID Squared) X (.0009714) X (Casing Depth + Landing Joint - Shoe Joint)

## Pressure of cement in annulus

**Hydrostatic Pressure:** 954.74 PSI

## Pressure of the fluids inside casing

**Displacement:** 539.79 psi

**Shoe Joint:** 31.23 psi

**Total** 571.01 psi

**Differential Pressure:** 383.72 psi

**Collapse PSI:** 2020.00 psi

**Burst PSI:** 3520.00 psi

**Total Water Needed:** 244.17 bbls

X Authorization To Proceed



**Bison Oil Well Cementing  
Single Cement Surface Pipe**

Customer  
Well Name

Anadarko Petroleum Corporation  
Sack 1C-30HZ

INVOICE #  
LOCATION  
FOREMAN  
Date

25029  
Weld  
Calvin Reimers  
8/7/2014

Treatment Report Page 2

**DESCRIPTION OF JOB EVENTS**

		Displace 1			Displace 2			Displace 3			Displace 4			Displace 5		
		BBLS	Time	PSI	BBLS	Time	PSI	BBLS	Time	PSI	BBLS	Time	PSI	BBLS	Time	PSI
Safety Meeting	552pm															
MIRU	430pm															
CIRCULATE	1050pm	0	1142pm	50	0			0			0			0		
Drop Plug		10	1145pm	50	10			10			10			10		
1141pm		20	1147pm	60	20			20			20			20		
		30	1149pm	150	30			30			30			30		
		40	1150pm	180	40			40			40			40		
M & P		50	1152pm	250	50			50			50			50		
Time	Sacks	60	1154pm	300	60			60			60			60		
1057pm	543	70	1155pm	360	70			70			70			70		
1134pm		80	1157pm	430	80			80			80			80		
		90	1159pm	420	90			90			90			90		
		100	1200am	400	100			100			100			100		
		110	Bump	1420	110	1202am		110			110			110		
% Excess	25%	120	Bump	1000	120	1204am		120			120			120		
Mixed bbls	96.78	130			130			130			130			130		
Total Sacks	543	140			140			140			140			140		
bbl Returns	19	150			150			150			150			150		
Water Temp	97															

Notes:

The day

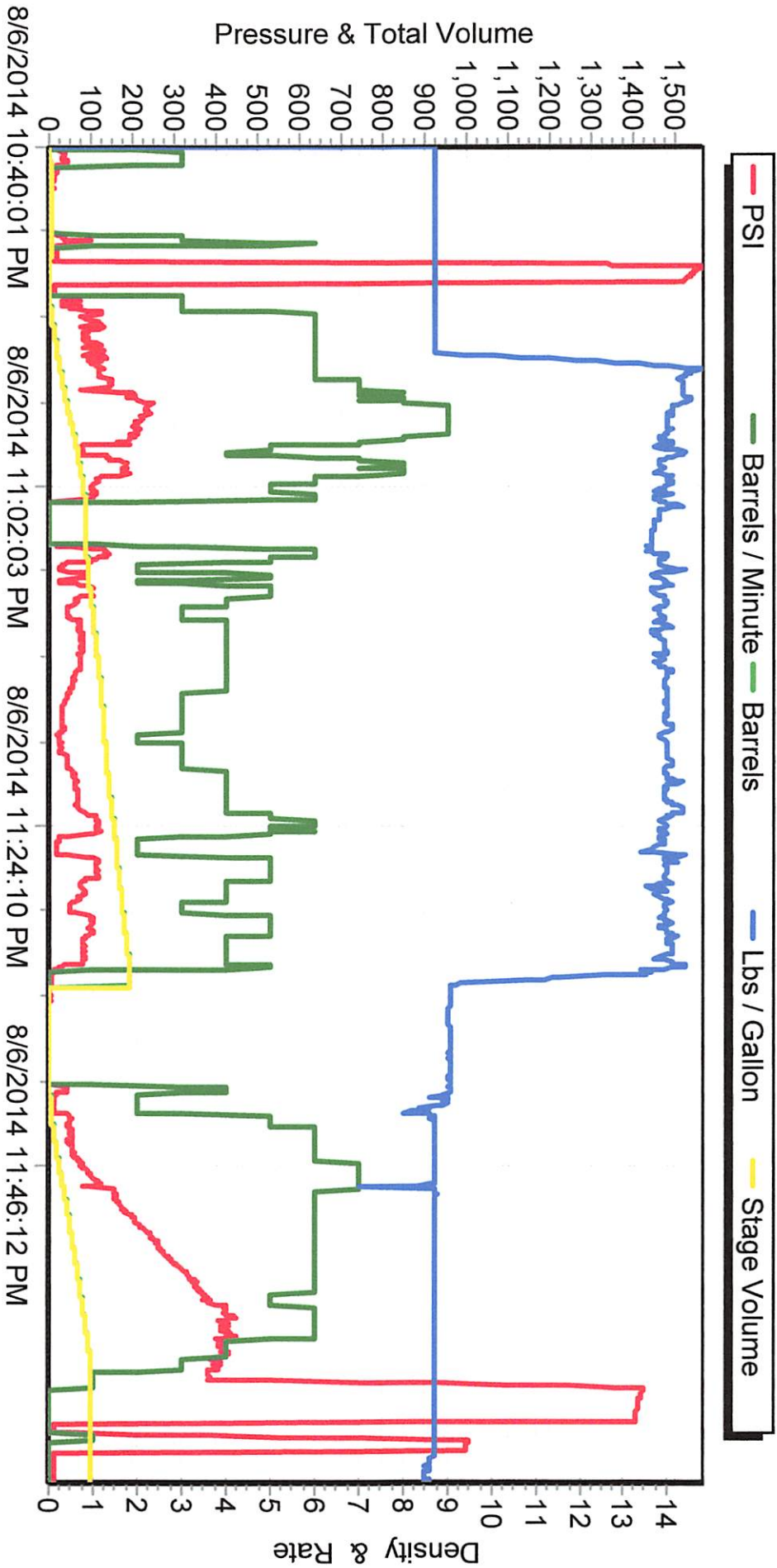
1/2 bbl back on bleed off

X Albu Secora  
Work Performed

X Consultant  
Title

X  
Date

# M/D TOTCO 2000 SERIES



# M/D TOTCO 2000 SERIES

