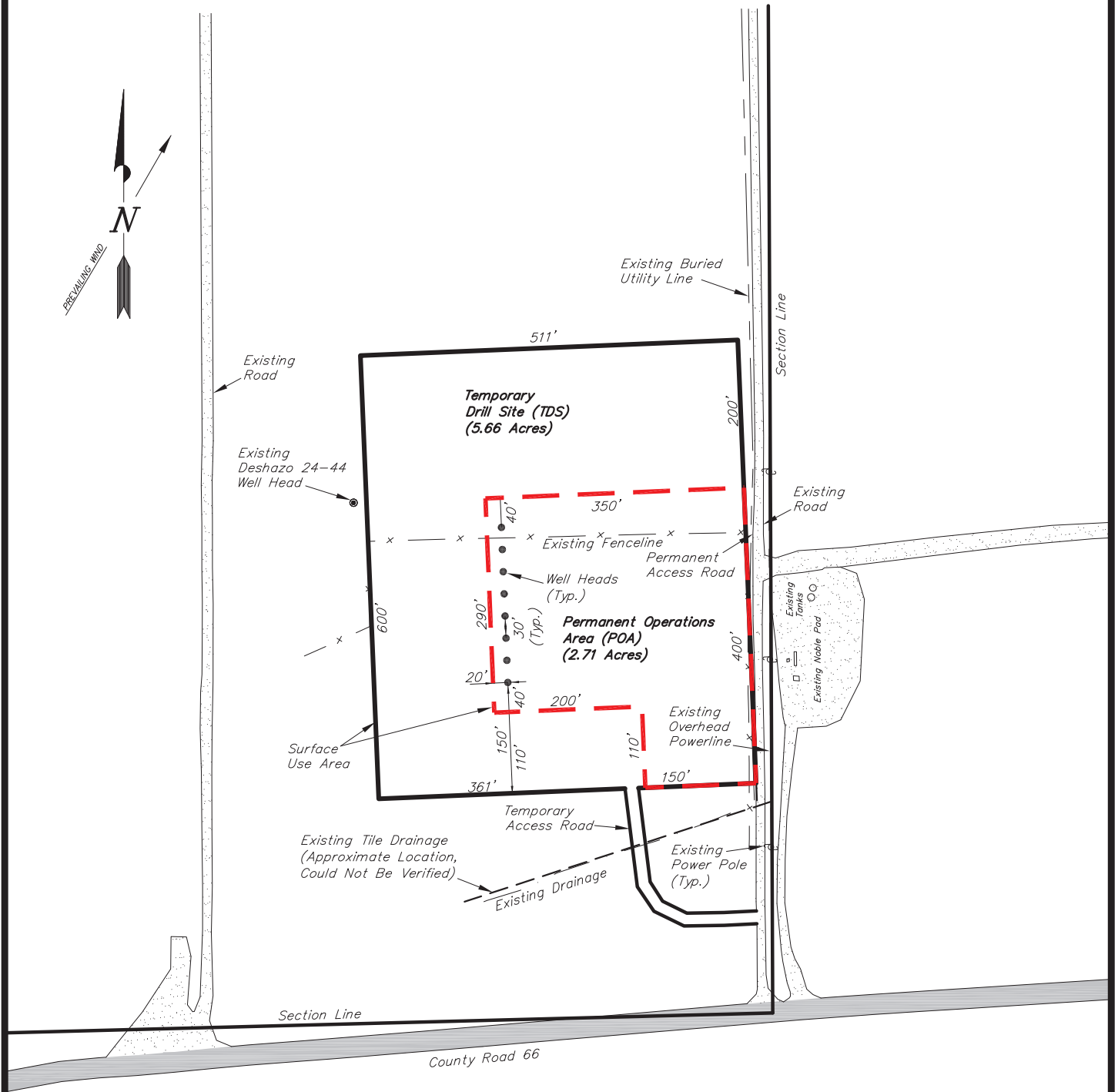


# GREAT WESTERN OIL & GAS COMPANY

## SUA EXHIBIT

Pad Location: SESE Section 24, T6N, R67W, 6th P.M.



SURVEYED BY:	C.S.	DATE SURVEYED:	07-08-14
DRAWN BY:	M.W.	DATE DRAWN:	07-09-14
SCALE:	1" = 200'	REVISED:	M.W. 08-21-14

**Tri State** (435) 781-2501  
*Land Surveying, Inc.*  
 180 NORTH VERNAL AVE. VERNAL, UTAH 84078