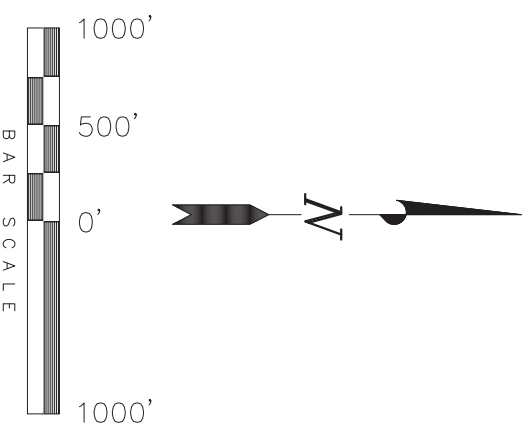
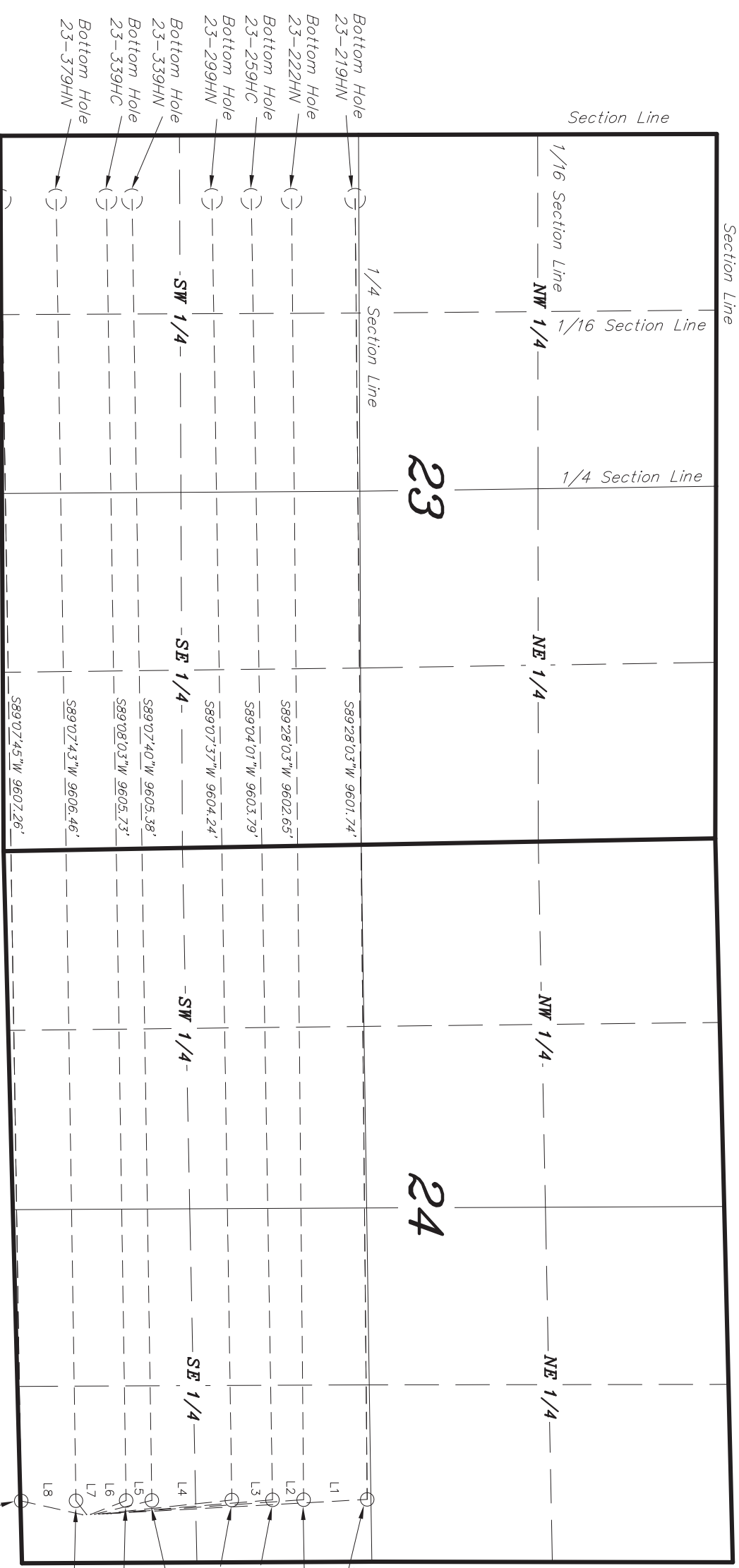


T6N, R67W, 6th P.M.

GREAT WESTERN OIL & GAS COMPANY

MULTI-WELL PLAN
 BURR FD 23-219HN, 222HN, 259HC,
 299HN, 339HN, 339HC, 379HN, 382HN
 Pad Location: SESE Section 24, T6N, R67W, 6th P.M.



LINE TABLE

LINE	BEARING
L1	N04°04'01"W 1455.18'
L2	N03°08'59"W 1893.37'
L3	N04°43'13"W 1255.83'
L4	N06°00'04"W 986.84'
L5	N1°36'07"W 433.56'
L6	N21°24'27"W 280.67'
L7	S52°24'00"W 129.04'
L8	S12°30'19"W 469.03'

TRI STATE LAND SURVEYING & CONSULTING
 180 NORTH VERNAL AVE. - VERNAL, UTAH 84078
 (435) 781-2501

DATE SURVEYED: 07-08-14
 DATE DRAWN: 07-22-14
 REVISION: 08-21-14 M.W.

SURVEYED BY: C.S.
 DRAWN BY: M.W.

SCALE: 1" = 1000'

SHEET 3