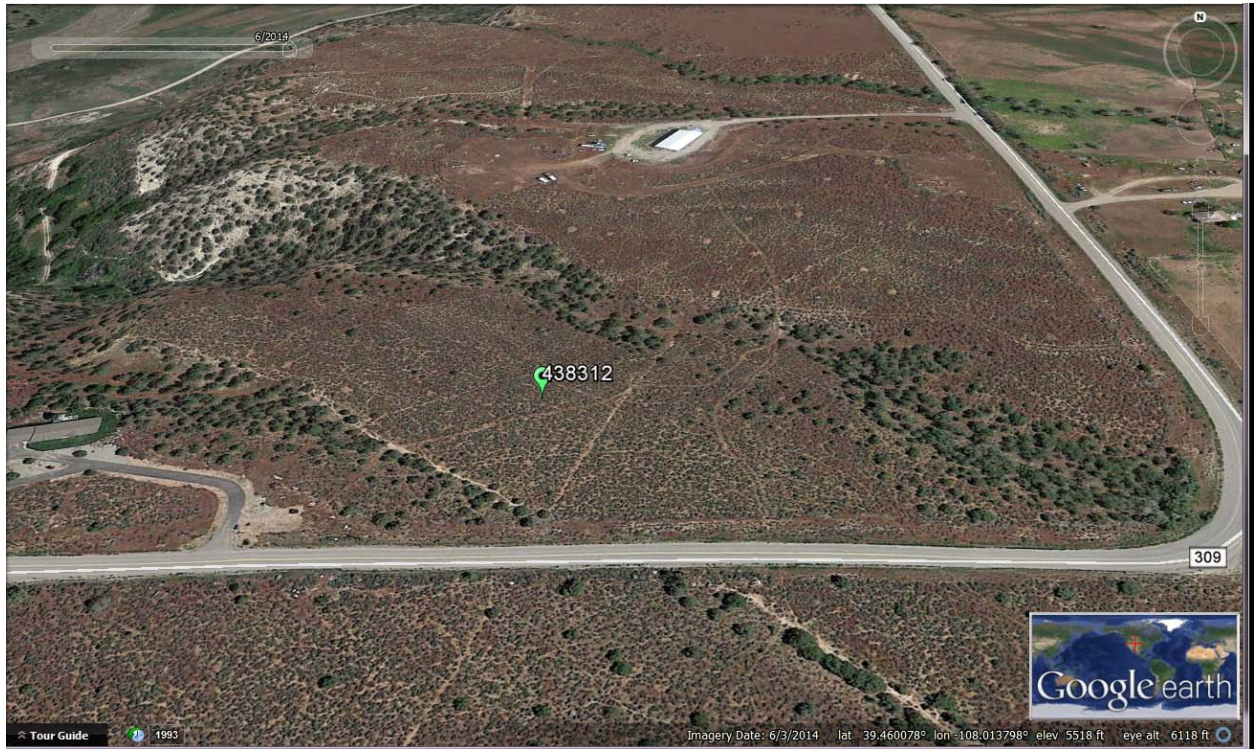


Location # 438312 Operator: URSA OPERATING COMPANY LLC

Inspection Photographs (16 total) 10/23 & 10/28, 2014



1. Location (overlaid on Google Earth, 2014).

10/23/2014:



2. Location access road entrance, viewed SW from NE.



3. Location, viewed NE from entrance.



4. Pad Western perimeter, viewed North from Western perimeter.



5. Pad Northern perimeter, viewed east from NW corner.



6. Pad Eastern perimeter, viewed South from center of perimeter.



7. Pad Eastern perimeter natural drainage, viewed North from SE quarter along perimeter.



8. Pad Eastern perimeter, viewed South from SE quarter along perimeter.



9. Pad Eastern perimeter, viewed North from SE quarter along perimeter.



10. Pad Eastern perimeter, viewed South from SE quarter along perimeter.



11. Pad Southern perimeter and location sign, viewed West from SE corner.



12. Pad Western perimeter, viewed North from SW corner.

10/28/2014:



13. Location access road entrance, viewed SW from NE.



14. Pad Western perimeter, viewed North from entrance.



15. Pad Western perimeter, viewed North from center of Western perimeter.



16. Location sign, with contact information, viewed East from center of Southern perimeter.