

PROCEED IN AN EASTERLY DIRECTION FROM EATON, COLORADO ALONG E COLLINS STREET/COUNTY ROAD 74 APPROXIMATELY 0.8 MILES TO THE JUNCTION OF THIS ROAD AND COUNTRY ROAD 39 TO THE NORTH; TURN LEFT AND PROCEED IN A NORTHERLY DIRECTION APPROXIMATELY 4.0 MILES TO THE JUNCTION OF THIS ROAD AND HIGHWAY 14 TO THE EAST; TURN RIGHT AND PROCEED IN AN EASTERLY DIRECTION APPROXIMATELY 4.0 MILES TO THE JUNCTION OF THIS ROAD AND COUNTY ROAD 47 TO THE SOUTH. TURN RIGHT AND PROCEED IN A SOUTHERLY DIRECTION APPROXIMATELY 0.4 MILES TO THE BEGINNING OF THE PROPOSED ACCESS ROAD TO THE WEST; FOLLOW ROAD FLAGS IN A WESTERLY DIRECTION APPROXIMATELY 59' TO THE PROPOSED LOCATION.

TOTAL DISTANCE FROM EATON, COLORADO TO THE PROPOSED WELL LOCATION IS APPROXIMATELY 9.2 MILES.

EXTRACTION OIL & GAS

BURROUGHS SOUTH #13, #12, #11, #10, #9 & #8
SECTION 14, T7N, R65W, 6th P.M.
SE 1/4 NE 1/4



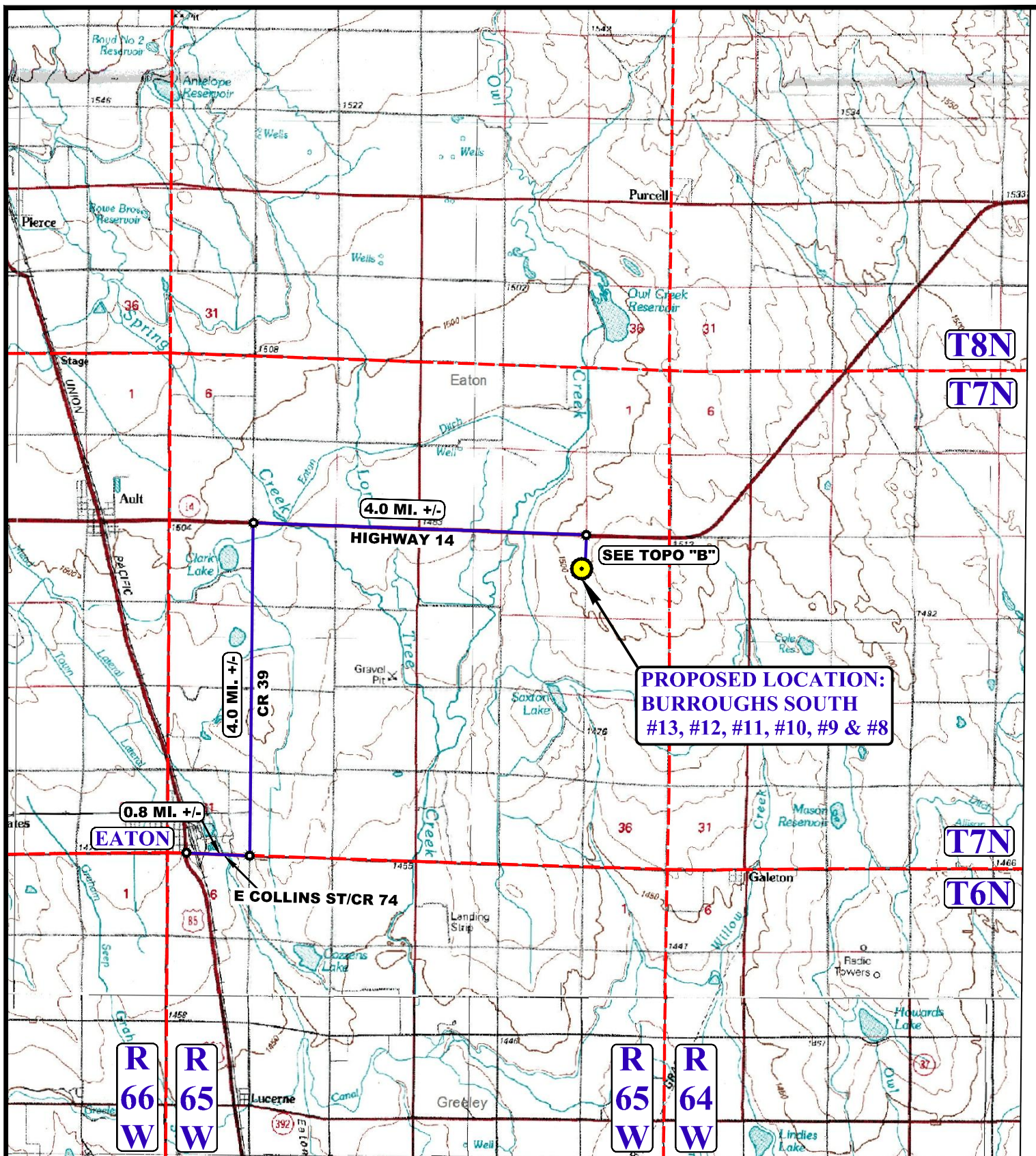
UELS, LLC
Corporate Office * 85 South 200 East
Vernal, UT 84078 * (435) 789-1017

DRAWN BY: T.W.

DATE DRAWN: 06-26-14

REVISED: 00-00-00

ROAD DESCRIPTION



LEGEND:

 PROPOSED LOCATION

EXTRACTION OIL & GAS

BURROUGHS SOUTH #13, #12, #11, #10, #9 & #8
 SECTION 14, T7N, R65W, 6th P.M.
 SE 1/4 NE 1/4



UELS, LLC
 Corporate Office * 85 South 200 East
 Vernal, UT 84078 * (435) 789-1017



DRAWN BY: T.W.

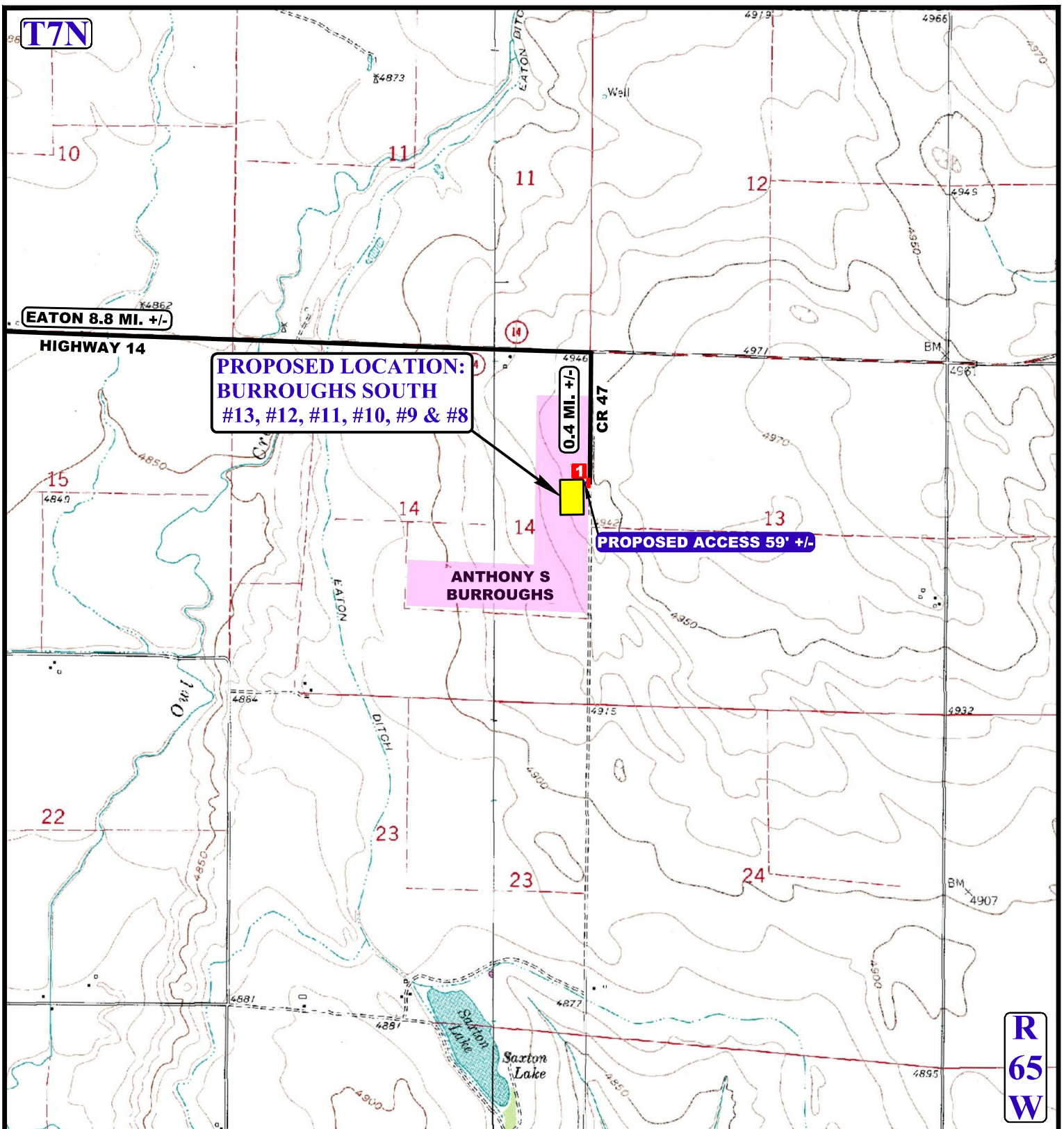
DATE DRAWN: 06-26-14

SCALE: 1:100,000

REVISED: 00-00-00

ACCESS ROAD MAP

TOPO A



NOTE: PARCEL DATA SHOWN HAS BEEN OBTAINED FROM VARIOUS SOURCES AND SHOULD BE USED FOR MAPPING, GRAPHIC AND PLANNING PURPOSES ONLY. NO WARRANTY IS MADE BY UINTAH ENGINEERING AND LAND SURVEYING (UELS) FOR ACCURACY OF THE PARCEL DATA.

LEGEND:

- EXISTING ROAD
- - - PROPOSED ROAD
- 1 18" CULVERT REQUIRED

EXTRACTION OIL & GAS

BURROUGHS SOUTH #13, #12, #11, #10, #9 & #8
SECTION 14, T7N, R65W, 6th P.M.
SE 1/4 NE 1/4

DRAWN BY: T.W.

DATE DRAWN: 06-26-14

SCALE: 1" = 2000'

REVISED: 00-00-00

ACCESS ROAD MAP

TOPO B



UELS, LLC
 Corporate Office * 85 South 200 East
 Vernal, UT 84078 * (435) 789-1017

