



RECEIVED 10/31/2014
FACILITIES 150351, 150057, 159346,
159193
DOC 2142383

October 31, 2014

Mr. Bob Chesson
Environmental Protection Specialist
State of Colorado
Oil and Gas Conservation Commission
1120 Lincoln Street, Suite 801
Denver, Colorado 80203

Via email; robert.chesson@state.co.us

**Subject: Semi-Annual Water Quality Monitoring
NGL Water Solutions**

- **C1-Kersey, Colorado, Facility ID #150351; API# 05-123-16804
CGRS Project # 1-8019-9683aa**
- **C4-Lyster, Greeley, Colorado, Facility ID #150057; API# 05-123-12448
CGRS Project # 1-8019-10079aa**
- **C6-Platteville, Colorado, Facility ID #159346; API# 05-123-32207
CGRS Project # 1-8019-10695aa**
- **C7-Briggsdale, Colorado, Facility ID #159193; API# 05-123-26004
CGRS Project # 1-8019-12439aa**

Dear Mr. Chesson:

This correspondence summarizes water quality testing for samples obtained from groundwater monitoring wells at the four referenced NGL Water Solutions (NGL) facilities. Groundwater quality sampling activities were performed on September 16, and September 25, 2014.

Water quality samples obtained from the groundwater monitoring wells were analyzed for benzene, toluene, ethylbenzene, and xylenes (BTEX), total dissolved solids (TDS), and chlorides. These compounds are commonly associated with oil field exploration and production water, which is disposed of at the NGL water treatment and disposal facilities. The water quality monitoring program provides background data, which will facilitate early detection of an unknown release of production water related to facility processing operations. As previously reported, water quality samples obtained from the groundwater monitoring wells are analyzed for BTEX because these compounds are regulated by the Colorado Oil and Gas Conservation Commission (COGCC). Since the water quality samples from the above-referenced facilities have historically contained no detectable concentrations of total petroleum hydrocarbons (TPH) above laboratory method detection limits (MDLs), TPH has been omitted from the analytical program.

C1-Kersey

Water quality samples were obtained on September 25, 2014, from three groundwater monitoring wells (MW-East, MW-West, MW-North). Review of the analytical data in Attachment A documents that BTEX concentrations in the site monitoring wells were below laboratory MDLs during this sampling event. The TDS concentrations ranged from 910 milligrams per liter (mg/L) to 1170 mg/L, and chloride concentrations ranged from 151 mg/L to 210 mg/L, which remains consistent with historic data.

The groundwater flow direction was calculated by measuring the groundwater depth at each of the three monitoring points. Based on the depth to groundwater and surveyed elevations of the wells, the groundwater flow direction remains consistent with historical data, and is to the east towards well MW-East at a calculated hydraulic gradient of approximately 0.01 ft/ft. Figures illustrating site conditions, inferred groundwater contours, and analytical data are

included in Attachment A as Figures 1 through 3, respectively. A summary of historic groundwater quality and groundwater elevation data is included in Attachment A as Table 1.

C4-Lyster-Greeley

Water quality samples were obtained on September 16, 2014, from six groundwater monitoring wells (MW-1, MW-2, MW-6, MW-11, MW-12, MW-13). Review of the analytical data in Attachment B documents that BTEX concentrations in the site monitoring wells were below laboratory MDLs during this sampling event. The TDS concentrations ranged from 1,220 mg/L to 2,430 mg/L, and chloride concentrations ranged from 54.3 mg/L to 593 mg/L, which remain consistent with historical data.

The groundwater flow direction was calculated by measuring the groundwater depth at each of the six monitoring points. Based on the September 16, 2014, groundwater depth and surveyed elevations of the wells, the groundwater flow direction remains consistent with historic data and is to the south toward well MW-13 at a calculated hydraulic gradient of approximately 0.02 ft/ft. Figures illustrating site conditions, inferred groundwater contours, and analytical data are included in Attachment B as Figures 1 through 3, respectively. A summary of historic groundwater quality and groundwater elevation data is included in Attachment B as Table 2.

C6-Platteville

Water quality samples were obtained on September 16, 2014, from four groundwater monitoring wells (MW-3, MW-4, MW-5, MW-6). Review of the analytical data in Attachment C documents that BTEX concentrations in the site monitoring wells were below laboratory MDLs during this sampling event. The TDS concentrations ranged from 1,700 mg/L to 8,190 mg/L, and chloride concentrations ranged from 336 mg/L to 811 mg/L, which remains consistent with historic data.

The groundwater flow direction was calculated by measuring the groundwater depth at each of the four monitoring points. Based on the depth to groundwater and surveyed elevations of the wells, the groundwater flow direction remains consistent with historical data, and is to the east-southeast towards well MW-3 at a calculated hydraulic gradient of approximately 0.04 ft/ft. Figures illustrating site conditions, inferred groundwater contours, and analytical data are included in Attachment C as Figures 1 through 3, respectively. A summary of historic groundwater quality and groundwater elevation data is included in Attachment C as Table 3.

C7-Briggsdale

Water quality samples were obtained on September 16, 2014, from four groundwater monitoring wells (MW-1, MW-2, MW-4, MW-6). Review of the analytical data in Attachment D documents that BTEX concentrations in the site monitoring wells were below laboratory MDLs during this sampling event. The TDS concentrations ranged from 930 mg/L to 1,450 mg/L, and chloride concentrations ranged from 38.0 mg/L to 60.5 mg/L, which remains consistent with historic data.

The groundwater flow direction was calculated by measuring the groundwater depth at each of the site groundwater monitoring points. Based on the depth to groundwater and surveyed elevations of the wells, the groundwater flow direction remains consistent with historical data, and is to the west towards well MW-6 at a calculated hydraulic gradient of approximately 0.003 ft/ft. Figures illustrating site conditions, inferred groundwater contours, and analytical data are included in Attachment D as Figures 1 through 3, respectively. A summary of historic groundwater quality and groundwater elevation data is included in Attachment D as Table 4.

Based on the water quality analytical testing at the C1, C4, C6, and C7 facilities, it does not appear that a release has impacted the subsurface environment. The next semi-annual sampling event is scheduled for March 2014. Should you have any questions or require additional information, please call Mr. Craig Mulica at (800) 288-2657.

Sincerely,
CGRS Inc.



Craig S. Mulica
Associate Geologist

Reviewed By:



Kelly Sutton
Project Manager/Scientist

Enclosures:

- Attachment A: C1- Kersey Facility Tables, Figures and Analytical Data
- Attachment B: C4- Lyster-Greeley Facility Tables, Figures, and Analytical Data
- Attachment C: C6- Platteville Facility Tables, Figures and Analytical Data
- Attachment D: C7- Briggsdale Facility Tables, Figures and Analytical Data

ec: Ms. Rae Chrisman – NGL Water Solutions; rchrism@highsierraenergy.com
Ms. Heather Barbare - Weld County Department of Public Health and Environment;
hbarbare@co.weld.co.us

ATTACHMENT A

C1 – Kersey: Facility Tables, Figures and Analytical Data

Table 1

NGL Water Solutions C1 - Kersey
Summary of Groundwater Elevation and Analytical Data

CGRS Job Number 1-8019-9683aa

Well ID	Date	Benzene (µg/L)	Toluene (µg/L)	Ethylbenzene (µg/L)	Xylenes (µg/L)	TDS (mg/L)	Chlorides (mg/L)	Depth to Groundwater (ft)	Top of Casing Elevation (ft)	Groundwater Elevation (ft)
MW-East	12/16/01	NA	NA	NA	NA	4,320	640	NM	NM	NM
MW-East	1/21/02	NA	NA	NA	NA	5,090	583	NM	NM	NM
MW-East	3/21/02	NA	NA	NA	NA	5,310	541	NM	NM	NM
MW-East	12/16/02	<0.5	<0.5	<0.5	<0.5	2,651	603	8.35	91.54	83.19
MW-East	4/1/03	<0.5	<0.5	<0.5	<0.5	4,486	420	7.42	91.54	84.12
MW-East	8/5/03	<0.5	<0.5	<0.5	<0.5	3,800	NA	8.96	91.54	82.58
MW-East	1/5/04	<0.5	<0.5	<0.5	<0.5	4,000	354	8.10	91.54	83.44
MW-East	4/16/04	<0.5	<0.5	<0.5	<0.5	4,396	300	8.50	91.54	83.04
MW-East	7/19/04	<0.5	<0.5	<0.5	<0.5	3,388	430	8.99	91.54	82.55
MW-East	12/13/04	<0.5	<0.5	<0.5	<0.5	3,308	241	6.71	91.54	84.83
MW-East	3/16/05	<0.5	<0.5	<0.5	<0.5	3,030	256	7.69	91.54	83.85
MW-East	9/22/05	<0.5	<0.5	<0.5	<0.5	2,932	254	7.31	91.54	84.23
MW-East	4/12/06	<0.5	<0.5	<0.5	<0.5	3,092	329	NM	91.54	NM
MW-East	3/7/07	<0.5	<0.5	<0.5	<0.5	2,724	312	6.36	91.54	85.18
MW-East	9/4/07	<0.5	<0.5	<0.5	<0.5	2,520	256	6.80	91.54	84.74
MW-East	3/4/08	<0.5	<0.5	<0.5	<0.5	2,615	267	6.61	91.54	84.93
MW-East	9/2/08	<1.0	<1.0	<1.0	<1.0	2,160	245	6.30	91.54	85.24
MW-East	3/6/09	<1.0	<1.0	<1.0	<1.0	2,180	256	6.85	91.54	84.69
MW-East	9/16/09	<1.0	<1.0	<1.0	<1.0	1,950	227	8.57	91.54	82.97
MW-East	3/16/10	<1.0	<1.0	<1.0	<1.0	2,000	308	5.84	91.54	85.70
MW-East	9/2/10	<1.0	<1.0	<1.0	<1.0	2,040	325	7.53	91.54	84.01
MW-East	3/7/11	<1.0	<1.0	<1.0	<1.0	2,250	280	8.86	91.54	82.68
MW-East	9/13/11	<1.0	<1.0	<1.0	<1.0	1,610	184	6.62	91.54	84.92
MW-East	3/13/12	<1.0	<1.0	<1.0	<1.0	1,390	173	6.55	91.54	84.99
MW-East	9/11/12	<1.0	<1.0	<1.0	<1.0	1,410	133	8.05	91.54	83.49
MW-East	3/15/13	<1.0	<1.0	<1.0	<1.0	1,240	162	6.10	91.54	85.44
MW-East	9/10/13	<1.0	<1.0	<1.0	<1.0	1,140	150	7.05	91.54	84.49
MW-East	3/13/14	<1.0	<1.0	<1.0	<1.0	1,130	146	6.55	91.54	84.99
MW-East	9/25/14	<1.0	<1.0	<1.0	<1.0	1,080	200	5.96	91.54	85.58
MW-West	12/16/01	NA	NA	NA	NA	730	110	NM	NM	NM

Table 1

NGL Water Solutions C1 - Kersey
Summary of Groundwater Elevation and Analytical Data

CGRS Job Number 1-8019-9683aa

Well ID	Date	Benzene (µg/L)	Toluene (µg/L)	Ethylbenzene (µg/L)	Xylenes (µg/L)	TDS (mg/L)	Chlorides (mg/L)	Depth to Groundwater (ft)	Top of Casing Elevation (ft)	Groundwater Elevation (ft)
MW-West	1/21/02	NA	NA	NA	NA	1,340	158	NM	NM	NM
MW-West	3/21/02	NA	NA	NA	NA	1,280	140	NM	NM	NM
MW-West	12/16/02	<0.5	<0.5	<0.5	<0.5	717	274	11.40	100.00	88.60
MW-West	4/1/03	<0.5	<0.5	<0.5	<0.5	1,094	137	11.00	100.00	89.00
MW-West	8/5/03	<0.5	<0.5	<0.5	<0.5	820	NA	8.06	100.00	91.94
MW-West	1/5/04	<0.5	<0.5	<0.5	<0.5	720	137	8.80	100.00	91.20
MW-West	4/16/04	<0.5	<0.5	<0.5	<0.5	1,520	108	12.67	100.00	87.33
MW-West	7/19/04	<0.5	<0.5	<0.5	<0.5	764	173	7.68	100.00	92.32
MW-West	12/13/04	<0.5	<0.5	<0.5	<0.5	738	110	10.74	100.00	89.26
MW-West	3/16/05	<0.5	<0.5	<0.5	<0.5	502	94.5	13.07	100.00	86.93
MW-West	9/22/05	<0.5	<0.5	<0.5	<0.5	654	89.0	7.80	100.00	92.20
MW-West	4/12/06	<0.5	<0.5	<0.5	<0.5	1,016	119	NM	100.00	NM
MW-West	3/7/07	<0.5	<0.5	<0.5	<0.5	844	125	12.19	100.00	87.81
MW-West	9/4/07	<0.5	<0.5	<0.5	<0.5	708	122	7.49	100.00	92.51
MW-West	3/4/08	<0.5	<0.5	<0.5	<0.5	1,020	145	10.05	100.00	89.95
MW-West	9/2/08	<1.0	<1.0	<1.0	<1.0	850	143	7.25	100.00	92.75
MW-West	3/6/09	<1.0	<1.0	<1.0	<1.0	1,080	171	10.78	100.00	89.22
MW-West	9/16/09	<1.0	<1.0	<1.0	<1.0	730	111	6.35	100.00	93.65
MW-West	3/16/10	<1.0	<1.0	<1.0	<1.0	920	166	8.82	100.00	91.18
MW-West	9/2/10	<1.0	<1.0	<1.0	<1.0	750	151	7.31	100.00	92.69
MW-West	3/7/11	<1.0	<1.0	<1.0	<1.0	2,190	290	10.02	100.00	89.98
MW-West	9/13/11	<1.0	<1.0	<1.0	<1.0	740	115	7.51	100.00	92.49
MW-West	3/13/12	<1.0	<1.0	<1.0	<1.0	1,680	276	9.46	100.00	90.54
MW-West	9/11/12	<1.0	<1.0	<1.0	<1.0	815	94.3	8.91	100.00	91.09
MW-West	3/15/13	<1.0	<1.0	<1.0	<1.0	1,020	168	10.15	100.00	89.85
MW-West	9/10/13	<1.0	<1.0	<1.0	<1.0	1,100	175	6.95	100.00	93.05
MW-West	3/13/14	<1.0	<1.0	<1.0	<1.0	1,460	223	10.09	100.00	89.91
MW-West	9/25/14	<1.0	<1.0	<1.0	<1.0	1,170	210	6.49	100.00	93.51
MW-North	8/5/03	<0.5	<0.5	<0.5	<0.5	1,500	NA	5.36	96.70	88.70
MW-North	1/5/04	<0.5	<0.5	<0.5	<0.5	660	124	8.00	96.70	87.01
MW-North	4/16/04	<0.5	<0.5	<0.5	<0.5	1,396	104	9.69	96.70	87.01

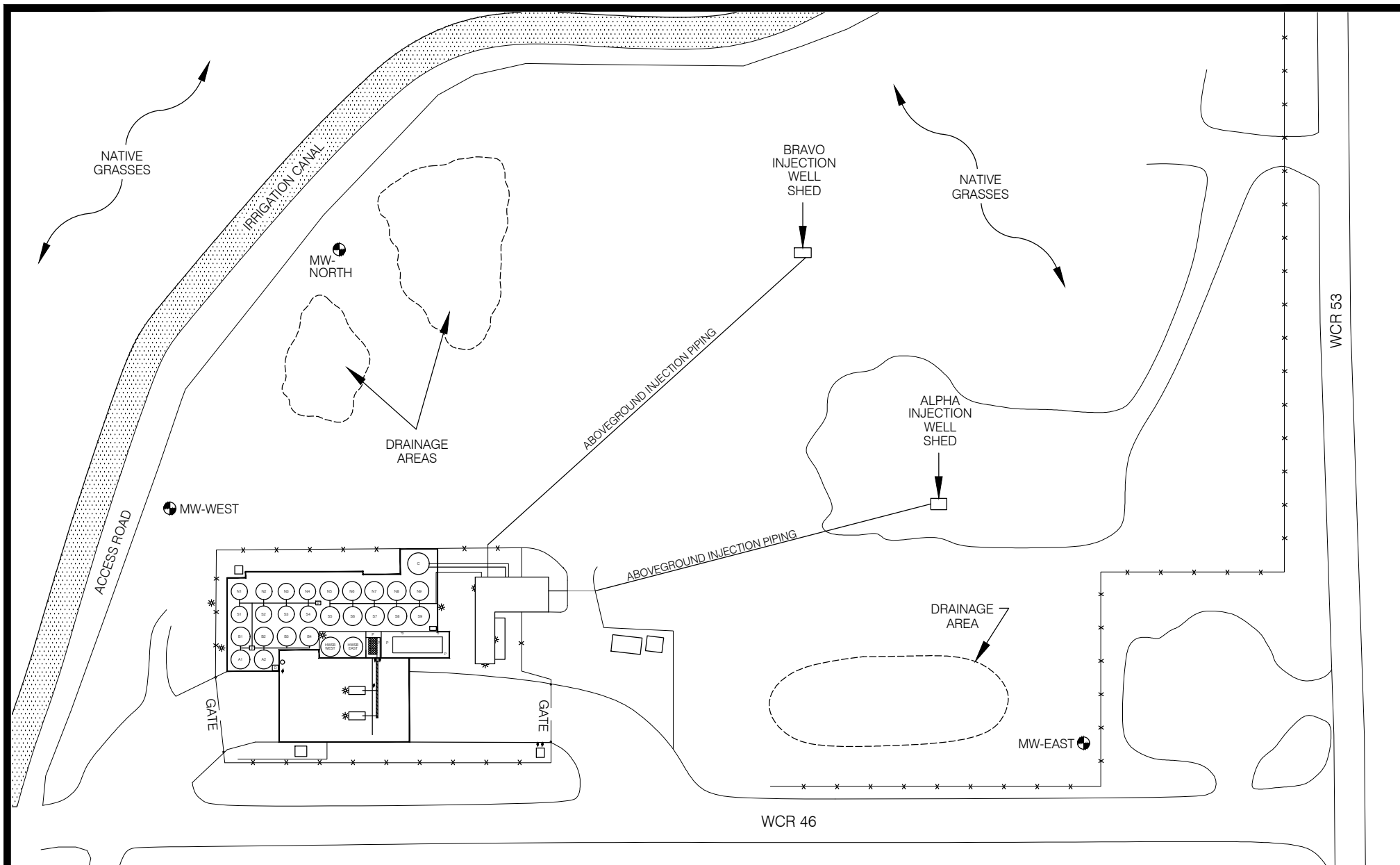
Table 1

NGL Water Solutions C1 - Kersey
Summary of Groundwater Elevation and Analytical Data

CGRS Job Number 1-8019-9683aa

Well ID	Date	Benzene (µg/L)	Toluene (µg/L)	Ethylbenzene (µg/L)	Xylenes (µg/L)	TDS (mg/L)	Chlorides (mg/L)	Depth to Groundwater (ft)	Top of Casing Elevation (ft)	Groundwater Elevation (ft)
MW-North	7/19/04	<0.5	<0.5	<0.5	<0.5	1,232	190	5.18	96.70	91.52
MW-North	12/13/04	<0.5	<0.5	<0.5	<0.5	952	129	7.19	96.70	89.51
MW-North	3/16/05	<0.5	<0.5	<0.5	<0.5	918	113	9.93	96.70	86.77
MW-North	9/22/05	<0.5	<0.5	<0.5	<0.5	906	114	5.68	96.70	91.02
MW-North	4/12/06	<0.5	<0.5	<0.5	<0.5	880	116	NM	96.70	NM
MW-North	3/7/07	<0.5	<0.5	<0.5	<0.5	964	121	8.91	96.70	87.79
MW-North	9/4/07	<0.5	<0.5	<0.5	<0.5	1,184	199	4.85	96.70	91.85
MW-North	3/4/08	<0.5	<0.5	<0.5	<0.5	810	116	7.02	96.70	89.68
MW-North	9/2/08	<1.0	<1.0	<1.0	<1.0	930	154	4.70	96.70	92.00
MW-North	3/6/09	<1.0	<1.0	<1.0	<1.0	870	141	7.64	96.70	89.06
MW-North	9/16/09	<1.0	<1.0	<1.0	<1.0	1,000	117	4.00	96.70	92.70
MW-North	3/16/10	<1.0	<1.0	<1.0	<1.0	790	119	5.65	96.70	91.05
MW-North	9/2/10	<1.0	<1.0	<1.0	<1.0	920	144	4.53	96.70	92.17
MW-North	3/7/11	<1.0	<1.0	<1.0	<1.0	1,030	195	7.34	96.70	89.36
MW-North	9/13/11	<1.0	<1.0	<1.0	<1.0	1,130	42.8	4.61	96.70	92.09
MW-North	3/13/12	<1.0	<1.0	<1.0	<1.0	770	128	6.72	96.70	89.98
MW-North	9/11/12	<1.0	<1.0	<1.0	<1.0	840	100	6.05	96.70	90.65
MW-North	3/15/13	<1.0	<1.0	<1.0	<1.0	860	139	7.18	96.70	89.52
MW-North	9/10/13	<1.0	<1.0	<1.0	<1.0	950	175	3.99	96.70	92.71
MW-North	3/13/14	<1.0	<1.0	<1.0	<1.0	990	153	7.31	96.70	89.39
MW-North	9/25/14	<1.0	<1.0	<1.0	<1.0	910	151	3.68	96.70	93.02

NA = Not Analyzed
NM = Not Measured



LEGEND

● MW-1 MONITORING WELL

— x — FENCE LINE

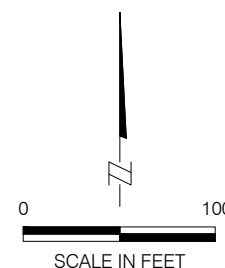


FIGURE 1 **SITE CONDITIONS MAP**

NGL Water Solutions - C1 Facility
25849 WCR 46
KERSEY, COLORADO

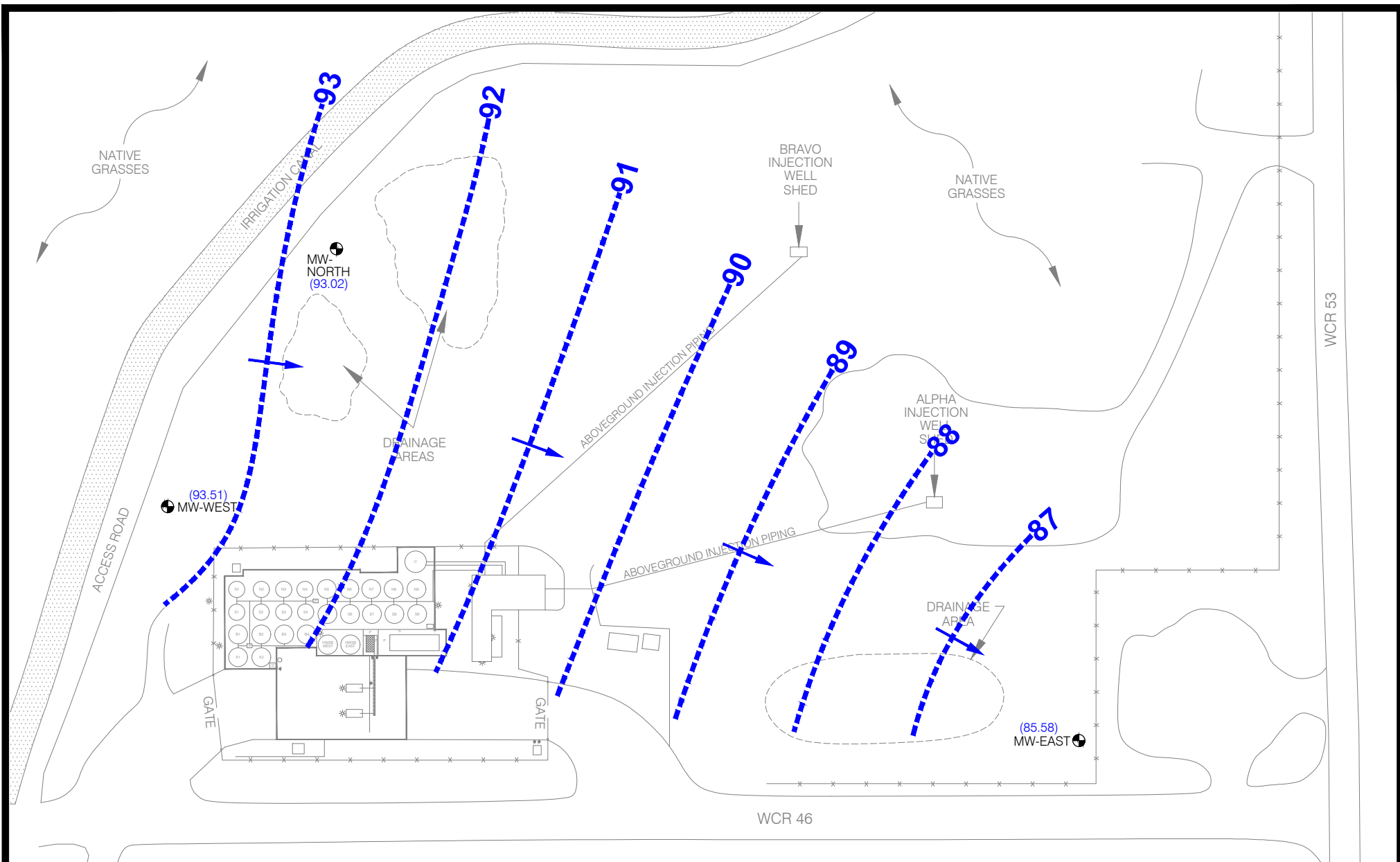
PROJECT:
1-8019-9683aa

DRAFT:
CLB




DATE:
04/29/13




REVIEW:

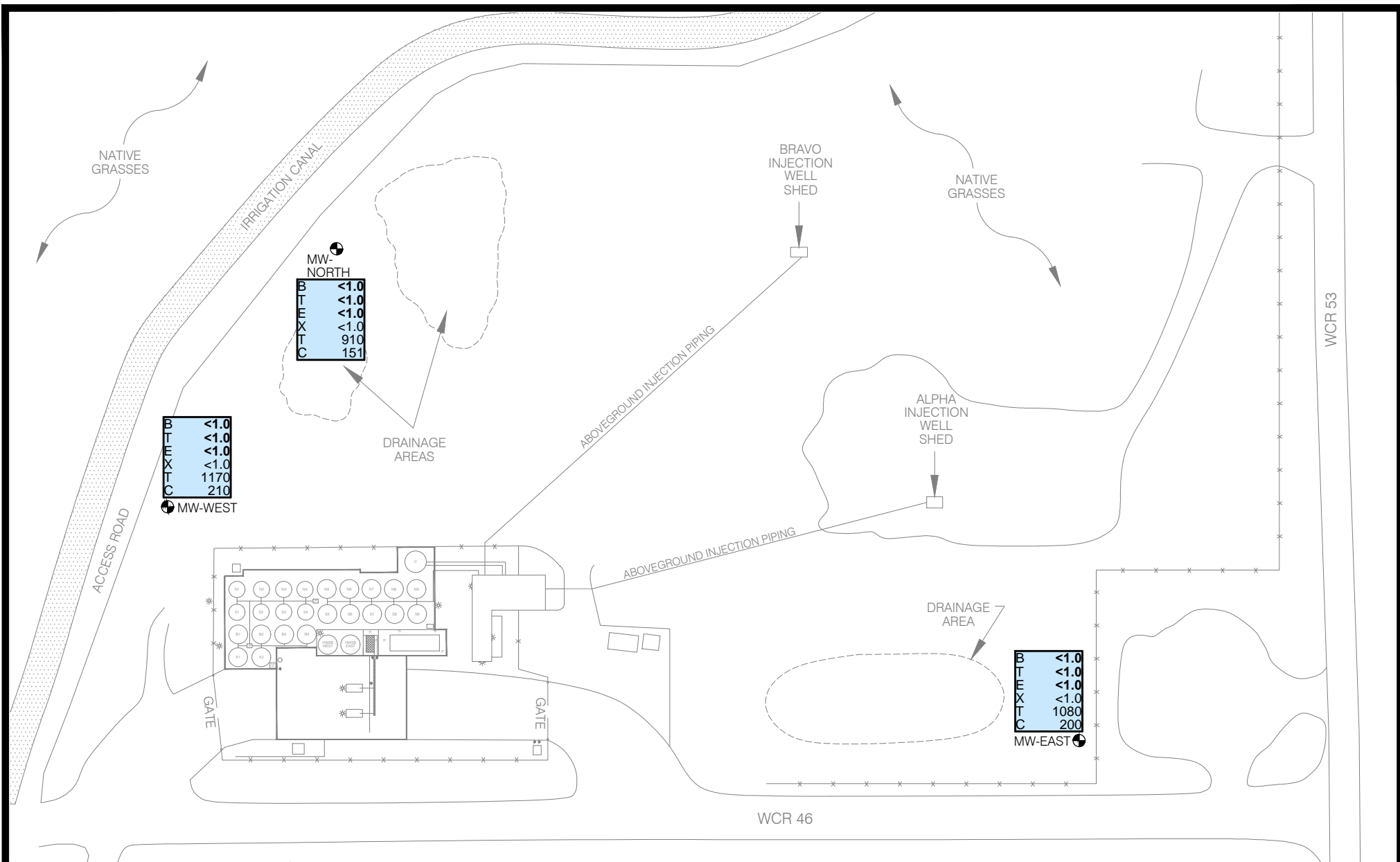




LEGEND

- MW-1
 MONITORING WELL LOCATION
-  INFERRED GROUNDWATER CONTOUR
-  INFERRED FLOW DIRECTION
- (85.44) GROUNDWATER ELEVATION (FEET)

  SCALE IN FEET		FIGURE 2 GROUNDWATER ELEVATION MAP September 25, 2014 NGL WATER SOLUTIONS C1 FACILITY 25849 WCR 46 KERSEY, COLORADO	
		PROJECT: 1-8019-9683aa	DRAFT: DRS
DATE: October 28, 2014		REVIEW:	



LEGEND

MW-1
● MONITORING WELL LOCATION

B	BENZENE (ug/L)
T	TOLUENE (ug/L)
E	ETHYLBENZENE (ug/L)
X	XYLENES (ug/L)
T	TOTAL DISSOLVED SOLIDS (mg/L)
C	CHLORIDES (mg/L)

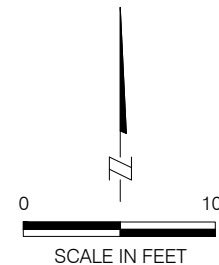


FIGURE 3
GROUNDWATER SAMPLE LOCATION MAP
September 25, 2014
NGL Water Solutions - C1 Facility
25849 WCR 46
KERSEY, COLORADO

PROJECT:
1-8019-9683aa
DATE:
October 28, 2014

DRAFT:
DRS
REVIEW:





TECHNOLOGY LABORATORY, INC.

CENTRE PROFESSIONAL PARK

1012 Centre Avenue
Fort Collins, Colorado 80526
(970) 490-1414

CERTIFICATE OF ANALYSIS

CGRS, INC.
1301 Academy Court
Fort Collins, CO 80524

Sample ID: MW-East

Laboratory ID B2050-01

Sampled: 09/25/14

Received: 09/25/14

Project No.: 1-8019-9683aa

Matrix: Water

<u>CAS Number</u>	<u>Parameter</u>	<u>Result</u>	<u>Units</u>	<u>MDL</u>	<u>Method</u>	<u>Date Analyzed</u>
71-43-2	Benzene	< 0.001	mg/L	0.001	EPA-8260B	09/26/14
108-88-3	Toluene	< 0.001	mg/L	0.001	EPA-8260B	09/26/14
100-41-4	Ethylbenzene	< 0.001	mg/L	0.001	EPA-8260B	09/26/14
1330-20-7	Total Xylenes	< 0.001	mg/L	0.001	EPA-8260B	09/26/14
16887-00-6	Chloride	200	mg/L	1	EPA-300.1	09/26/14
N/A	Total Dissolved Solids (TDS)	1080	mg/L	5	SM-2540 C	09/29/14

QA/QC SURROGATE RECOVERIES

<u>Compound</u>	<u>% Recovery</u>	<u>% Rec. Limits</u>
Dibromofluoromethane	79	68-120
Toluene-d8	93	81-128
Bromofluorobenzene	100	70-113

TECHNOLOGY LABORATORY, INC.

The results contained in this report
relate only to those items tested.



TECHNOLOGY LABORATORY, INC.

CENTRE PROFESSIONAL PARK

1012 Centre Avenue
Fort Collins, Colorado 80526
(970) 490-1414

CERTIFICATE OF ANALYSIS

CGRS, INC.
1301 Academy Court
Fort Collins, CO 80524

Sample ID: MW-North

Laboratory ID B2050-02

Sampled: 09/25/14

Received: 09/25/14

Project No.: 1-8019-9683aa

Matrix: Water

<u>CAS Number</u>	<u>Parameter</u>	<u>Result</u>	<u>Units</u>	<u>MDL</u>	<u>Method</u>	<u>Date Analyzed</u>
71-43-2	Benzene	< 0.001	mg/L	0.001	EPA-8260B	09/26/14
108-88-3	Toluene	< 0.001	mg/L	0.001	EPA-8260B	09/26/14
100-41-4	Ethylbenzene	< 0.001	mg/L	0.001	EPA-8260B	09/26/14
1330-20-7	Total Xylenes	< 0.001	mg/L	0.001	EPA-8260B	09/26/14
16887-00-6	Chloride	151	mg/L	1	EPA-300.1	09/26/14
N/A	Total Dissolved Solids (TDS)	910	mg/L	5	SM-2540 C	09/29/14

QA/QC SURROGATE RECOVERIES

<u>Compound</u>	<u>% Recovery</u>	<u>% Rec. Limits</u>
Dibromofluoromethane	78	68-120
Toluene-d8	94	81-128
Bromofluorobenzene	100	70-113

TECHNOLOGY LABORATORY, INC.

The results contained in this report
relate only to those items tested.



TECHNOLOGY LABORATORY, INC.

CENTRE PROFESSIONAL PARK

1012 Centre Avenue
Fort Collins, Colorado 80526
(970) 490-1414

CERTIFICATE OF ANALYSIS

CGRS, INC.
1301 Academy Court
Fort Collins, CO 80524

Sample ID: MW-West

Laboratory ID B2050-03

Sampled: 09/25/14

Received: 09/25/14

Project No.: 1-8019-9683aa

Matrix: Water

<u>CAS Number</u>	<u>Parameter</u>	<u>Result</u>	<u>Units</u>	<u>MDL</u>	<u>Method</u>	<u>Date Analyzed</u>
71-43-2	Benzene	< 0.001	mg/L	0.001	EPA-8260B	09/26/14
108-88-3	Toluene	< 0.001	mg/L	0.001	EPA-8260B	09/26/14
100-41-4	Ethylbenzene	< 0.001	mg/L	0.001	EPA-8260B	09/26/14
1330-20-7	Total Xylenes	< 0.001	mg/L	0.001	EPA-8260B	09/26/14
16887-00-6	Chloride	210	mg/L	1	EPA-300.1	09/26/14
N/A	Total Dissolved Solids (TDS)	1170	mg/L	5	SM-2540 C	09/29/14

QA/QC SURROGATE RECOVERIES

<u>Compound</u>	<u>% Recovery</u>	<u>% Rec. Limits</u>
Dibromofluoromethane	79	68-120
Toluene-d8	92	81-128
Bromofluorobenzene	100	70-113

TECHNOLOGY LABORATORY, INC.

The results contained in this report
relate only to those items tested.

ATTACHMENT B

C4 – Lyster – Greeley: Facility Tables, Figures and Analytical Data

Table 2

NGL Water Solutions C4 - Greeley
Summary of Groundwater Elevation and Analytical Data

CGRS Job Number 1-8019-10079aa

Well ID	Date	Benzene (mg/L)	Toluene (mg/L)	Ethylbenzene (mg/L)	Xylenes (mg/L)	TDS (mg/L)	Chlorides (mg/L)	Depth to Groundwater (ft)	Top of Casing Elevation (ft)	Groundwater Elevation (ft)
MW-1	3/4/04	NA	NA	NA	NA	NA	NA	19.05	99.44	80.39
MW-1	10/8/04	<0.0005	<0.0005	<0.0005	<0.0005	NA	NA	NM	99.44	NM
MW-1	3/17/05	<0.0005	<0.0005	<0.0005	<0.0005	1,712	50.0	18.08	99.44	81.36
MW-1	9/22/05	<0.0005	<0.0005	<0.0005	<0.0005	1,332	37.5	14.05	99.44	85.39
MW-1	4/12/06	<0.0005	<0.0005	<0.0005	<0.0005	1,624	43.8	NM	99.44	NM
MW-1	3/7/07	<0.0005	<0.0005	<0.0005	<0.0005	1,576	26.7	17.25	99.44	82.19
MW-1	9/4/07	<0.0005	<0.0005	<0.0005	<0.0005	1,736	217	17.66	99.44	81.78
MW-1	3/5/08	<0.0005	<0.0005	<0.0005	<0.0005	1,360	45.4	19.22	99.44	80.22
MW-1	9/2/08	<0.001	<0.001	<0.001	<0.001	1,050	48.9	18.58	99.44	80.86
MW-1	3/6/09	<0.001	<0.001	<0.001	<0.001	1,040	42.9	19.42	99.44	80.02
MW-1	9/16/09	<0.001	<0.001	<0.001	<0.001	1,400	92.7	14.01	99.44	85.43
MW-1	3/16/10	<0.001	<0.001	<0.001	<0.001	1,020	36.4	16.72	99.44	82.72
MW-1	9/2/10	<0.001	<0.001	<0.001	<0.001	1,030	70.9	13.89	95.85	81.96
MW-1	3/7/11	<0.001	<0.001	<0.001	<0.001	1,170	33.0	15.60	95.85	80.25
MW-1	9/14/11	<0.001	<0.001	<0.001	<0.001	2,020	555	16.85	95.85	79.00
MW-1	3/13/12	<0.001	<0.001	<0.001	<0.001	1,050	53.4	16.78	95.85	79.07
MW-1	9/11/12	<0.001	<0.001	<0.001	<0.001	970	36.0	16.35	95.85	79.50
MW-1	3/15/13	<0.001	<0.001	<0.001	<0.001	1,160	39.7	18.26	95.85	77.59
MW-1	9/11/13	<0.001	<0.001	<0.001	<0.001	1,220	40.6	17.77	95.85	78.08
MW-1	3/13/14	<0.001	<0.001	<0.001	<0.001	1,290	24.0	19.36	95.85	76.49
MW-1	9/16/14	<0.001	<0.001	<0.001	<0.001	1,390	65.2	17.72	95.85	78.13
MW-2	3/4/04	NA	NA	NA	NA	NA	NA	18.06	101.82	83.76
MW-2	3/17/05	<0.0005	<0.0005	<0.0005	<0.0005	1,656	36.1	17.16	101.82	84.66
MW-2	9/22/05	<0.0005	<0.0005	<0.0005	<0.0005	1,222	26.1	13.61	101.82	88.21
MW-2	4/12/06	<0.0005	<0.0005	<0.0005	<0.0005	1,268	36.3	NM	101.82	NM
MW-2	3/7/07	<0.0005	<0.0005	<0.0005	<0.0005	1,468	26.0	16.68	101.82	85.14
MW-2	9/4/07	<0.0005	<0.0005	<0.0005	<0.0005	1,464	35.2	16.79	101.82	85.03
MW-2	3/5/08	<0.0005	<0.0005	<0.0005	<0.0005	1,215	44.0	18.46	101.82	83.36
MW-2	9/2/08	<0.001	<0.001	<0.001	<0.001	950	53.5	18.52	101.82	83.30
MW-2	3/6/09	<0.001	<0.001	<0.001	<0.001	1,090	42.0	18.64	101.82	83.18
MW-2	9/16/09	NA	NA	NA	NA	NA	NA	13.78	101.82	88.04
MW-2	3/16/10	<0.001	<0.001	<0.001	<0.001	1,110	43.9	16.21	101.82	85.61
MW-2	9/2/10	<0.001	<0.001	<0.001	<0.001	1,090	42.3	17.40	102.12	84.72
MW-2	3/7/11	<0.001	<0.001	<0.001	<0.001	1,390	35.8	18.87	102.12	83.25
MW-2	9/14/11	<0.001	<0.001	<0.001	<0.001	1,190	29.0	19.80	102.12	82.32
MW-2	3/13/12	<0.001	<0.001	<0.001	<0.001	1,060	41.8	19.55	102.12	82.57
MW-2	9/11/12	<0.001	<0.001	<0.001	<0.001	1,040	33.6	19.58	102.12	82.54
MW-2	3/15/13	<0.001	<0.001	<0.001	<0.001	1,370	41.8	21.05	102.12	81.07
MW-2	9/11/13	<0.001	<0.001	<0.001	<0.001	1,660	27.9	21.00	102.12	81.12
MW-2	3/13/14	<0.001	<0.001	<0.001	<0.001	1,800	21.4	22.08	102.12	80.04
MW-2	9/16/14	<0.001	<0.001	<0.001	<0.001	1,590	54.3	20.75	102.12	81.37
MW-6	3/4/04	NA	NA	NA	NA	NA	NA	17.96	100.00	82.04
MW-6	10/8/04	<0.0005	<0.0005	<0.0005	<0.0005	NA	NA	NM	100.00	NM
MW-6	3/17/05	<0.0005	<0.0005	<0.0005	<0.0005	1,392	30.0	17.09	100.00	82.91
MW-6	9/22/05	<0.0005	<0.0005	<0.0005	<0.0005	1,058	44.8	13.39	100.00	86.61
MW-6	4/12/06	<0.0005	<0.0005	<0.0005	<0.0005	1,536	31.8	NM	100.00	NM
MW-6	3/7/07	<0.0005	<0.0005	<0.0005	<0.0005	1,128	24.2	16.54	100.00	83.46
MW-6	9/4/07	<0.0005	<0.0005	<0.0005	<0.0005	1,272	33.4	17.00	100.00	83.00
MW-6	3/5/08	<0.0005	<0.0005	<0.0005	<0.0005	1,010	30.3	18.27	100.00	81.73
MW-6	9/2/08	<0.001	<0.001	<0.001	<0.001	1,500	42.1	18.50	100.00	81.50
MW-6	3/6/09	<0.001	<0.001	<0.001	<0.001	730	35.1	18.37	100.00	81.63
MW-6	9/16/09	<0.001	<0.001	<0.001	<0.001	1,790	250	14.54	100.00	85.46
MW-6	3/16/10	<0.001	<0.001	<0.001	<0.001	860	39.7	16.05	100.00	83.95
MW-6	9/2/10	<0.001	<0.001	<0.001	<0.001	940	98.0	16.58	100.00	83.42
MW-6	3/7/11	<0.001	<0.001	<0.001	<0.001	1,030	36.4	18.06	100.00	81.94
MW-6	9/14/11	<0.001	<0.001	<0.001	<0.001	990	44.8	19.09	100.00	80.91
MW-6	3/13/12	<0.001	<0.001	<0.001	<0.001	970	38.3	18.83	100.00	81.17
MW-6	9/11/12	<0.001	<0.001	<0.001	<0.001	1,040	53.0	18.80	100.00	81.20
MW-6	3/15/13	<0.001	<0.001	<0.001	<0.001	1,220	46.6	20.48	100.00	79.52

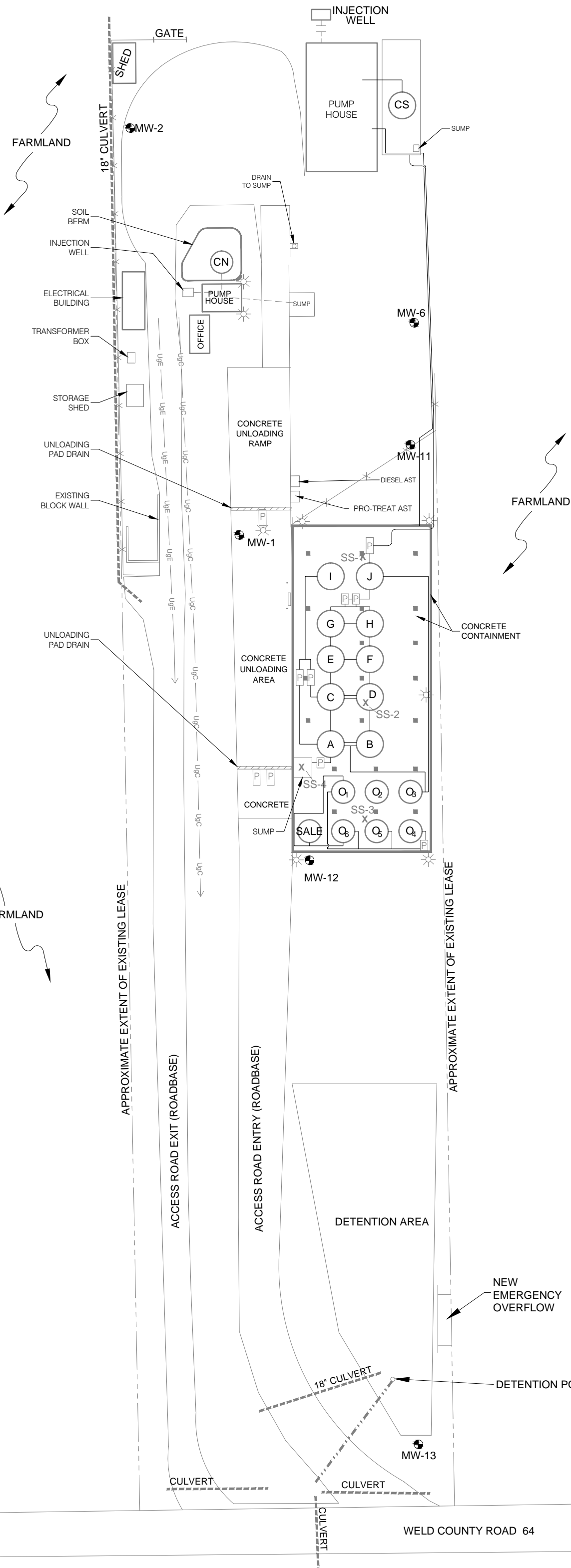
Table 2

NGL Water Solutions C4 - Greeley
Summary of Groundwater Elevation and Analytical Data

CGRS Job Number 1-8019-10079aa

Well ID	Date	Benzene (mg/L)	Toluene (mg/L)	Ethylbenzene (mg/L)	Xylenes (mg/L)	TDS (mg/L)	Chlorides (mg/L)	Depth to Groundwater (ft)	Top of Casing Elevation (ft)	Groundwater Elevation (ft)
MW-6	9/11/13	<0.001	<0.001	<0.001	<0.001	1,410	103	20.59	100.00	79.41
MW-6	3/13/14	<0.001	<0.001	<0.001	<0.001	1,540	38.5	21.58	100.00	78.42
MW-6	9/16/14	<0.001	<0.001	<0.001	<0.001	2,430		20.49	100.00	79.51
MW-11	3/22/04	<0.0005	<0.0005	<0.0005	<0.0005	NA	32.0	19.61	NS	NS
MW-11	10/8/04	<0.0005	<0.0005	<0.0005	<0.0005	NA	NA	NM	NS	NS
MW-11	3/17/05	<0.0005	<0.0005	<0.0005	<0.0005	1,206	86.6	18.39	NS	NS
MW-11	9/22/05	<0.0005	<0.0005	<0.0005	<0.0005	2,508	513	14.51	NS	NS
MW-11	4/12/06	<0.0005	<0.0005	<0.0005	<0.0005	20,460	41.7	NM	NS	NS
MW-11	3/7/07	<0.0005	<0.0005	<0.0005	<0.0005	1,256	25.5	17.66	NS	NS
MW-11	9/4/07	<0.0005	<0.0005	<0.0005	<0.0005	1,560	67.9	18.79	NS	NS
MW-11	3/5/08	<0.0005	<0.0005	<0.0005	<0.0005	1,125	33.1	19.59	NS	NS
MW-11	9/2/08	<0.001	<0.001	<0.001	<0.001	3,140	798	19.58	NS	NS
MW-11	3/6/09	<0.001	<0.001	<0.001	<0.001	980	62.7	19.74	NS	NS
MW-11	9/16/09	<0.001	<0.001	<0.001	<0.001	970	31.3	13.58	NS	NS
MW-11	3/16/10	<0.001	<0.001	<0.001	<0.001	910	37.6	17.16	NS	NS
MW-11	9/2/10	<0.001	<0.001	<0.001	<0.001	1,080	54.0	17.70	100.06	82.36
MW-11	3/7/11	<0.001	<0.001	<0.001	<0.001	1,080	35.1	19.31	100.06	80.75
MW-11	9/14/11	<0.001	<0.001	<0.001	<0.001	1,090	43.5	20.58	100.06	79.48
MW-11	3/13/12	<0.001	<0.001	<0.001	<0.001	1,140	44.5	20.38	100.06	79.68
MW-11	9/11/12	<0.001	<0.001	<0.001	<0.001	1,780	193.0	20.19	100.06	79.87
MW-11	3/15/13	<0.001	<0.001	<0.001	<0.001	1,130	43.1	22.12	100.06	77.94
MW-11	9/11/13	<0.001	<0.001	<0.001	<0.001	1,430	49.7	21.97	100.06	78.09
MW-11	3/13/14	<0.001	<0.001	<0.001	<0.001	1,230	36.4	23.14	100.06	76.92
MW-11	9/16/14	<0.001	<0.001	<0.001	<0.001	1,680	77.9	21.83	100.06	78.23
MW-12	7/1/13	<0.001	<0.001	<0.001	<0.001	1,190	60.6	20.86	94.19	73.33
MW-12	9/11/13	<0.001	<0.001	<0.001	<0.001	1,300	76.5	18.98	94.19	75.21
MW-12	3/13/14	<0.001	<0.001	<0.001	<0.001	1,420	38.1	20.94	94.19	73.25
MW-12	9/16/14	<0.001	<0.001	<0.001	<0.001	1,280	60.8	18.80	94.19	75.39
MW-13	7/1/13	<0.001	<0.001	<0.001	<0.001	680	27.2	24.37	91.12	66.75
MW-13	9/11/13	<0.001	<0.001	<0.001	<0.001	1,210	36.6	22.83	91.12	68.29
MW-13	3/13/14	<0.001	<0.001	<0.001	<0.001	1,240	28.1	24.42	91.12	66.70
MW-13	9/16/14	<0.001	<0.001	<0.001	<0.001	1,220	72.0	22.11	91.12	69.01

NS = Not surveyed
NA = Not Analyzed
NM = Not Measured



LEGEND

 MW-1 MONITORING WELL LOCATION


FIGURE 1

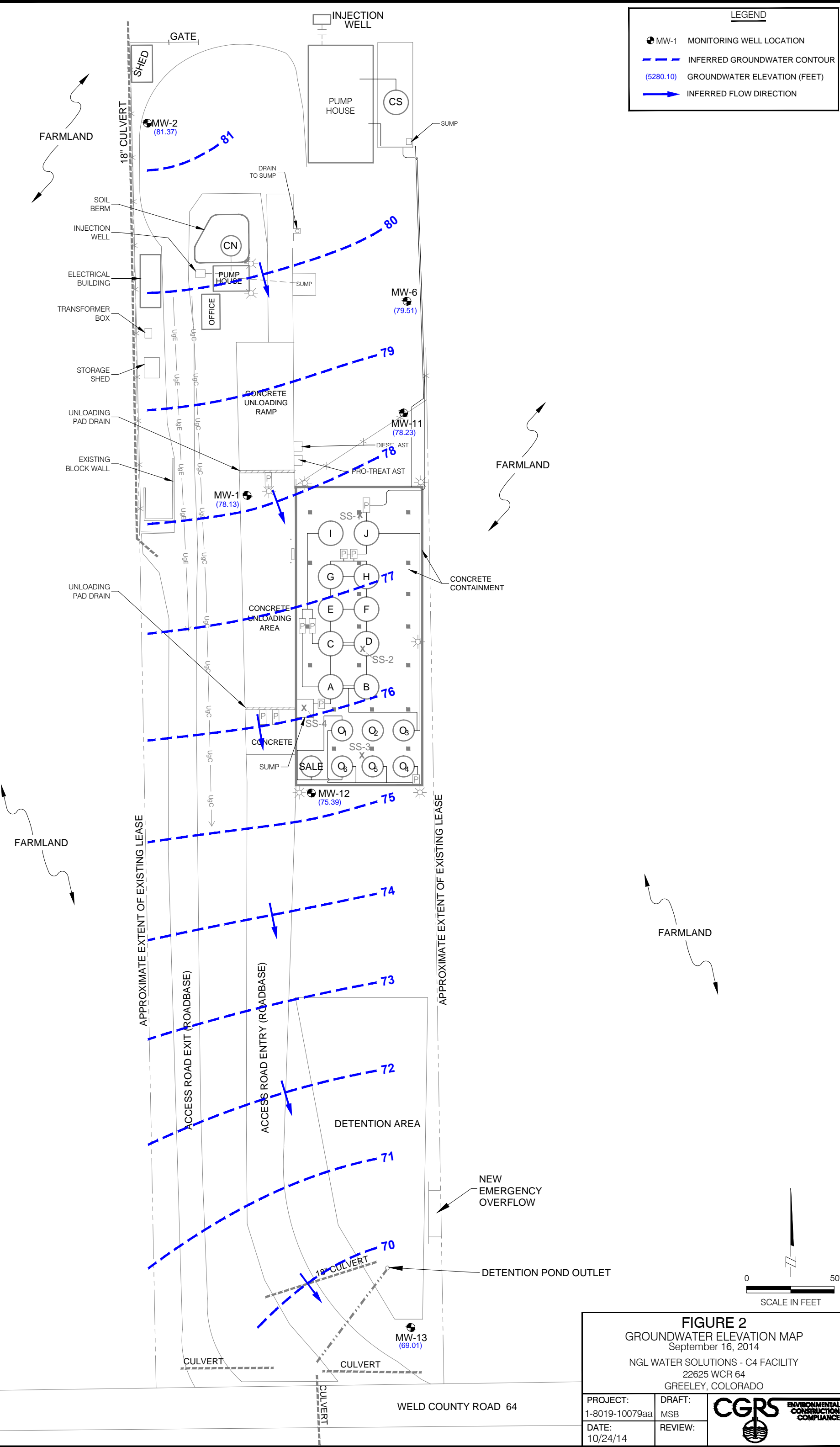
SITE CONDITIONS MAP

NGL WATER SOLUTIONS - C4 FACILITY

22625 WCR 64

GREELEY, COLORADO

PROJECT:	DRAFT:	
1-8019-10079aa	MSB	
DATE:	REVIEW:	
10/24/14		



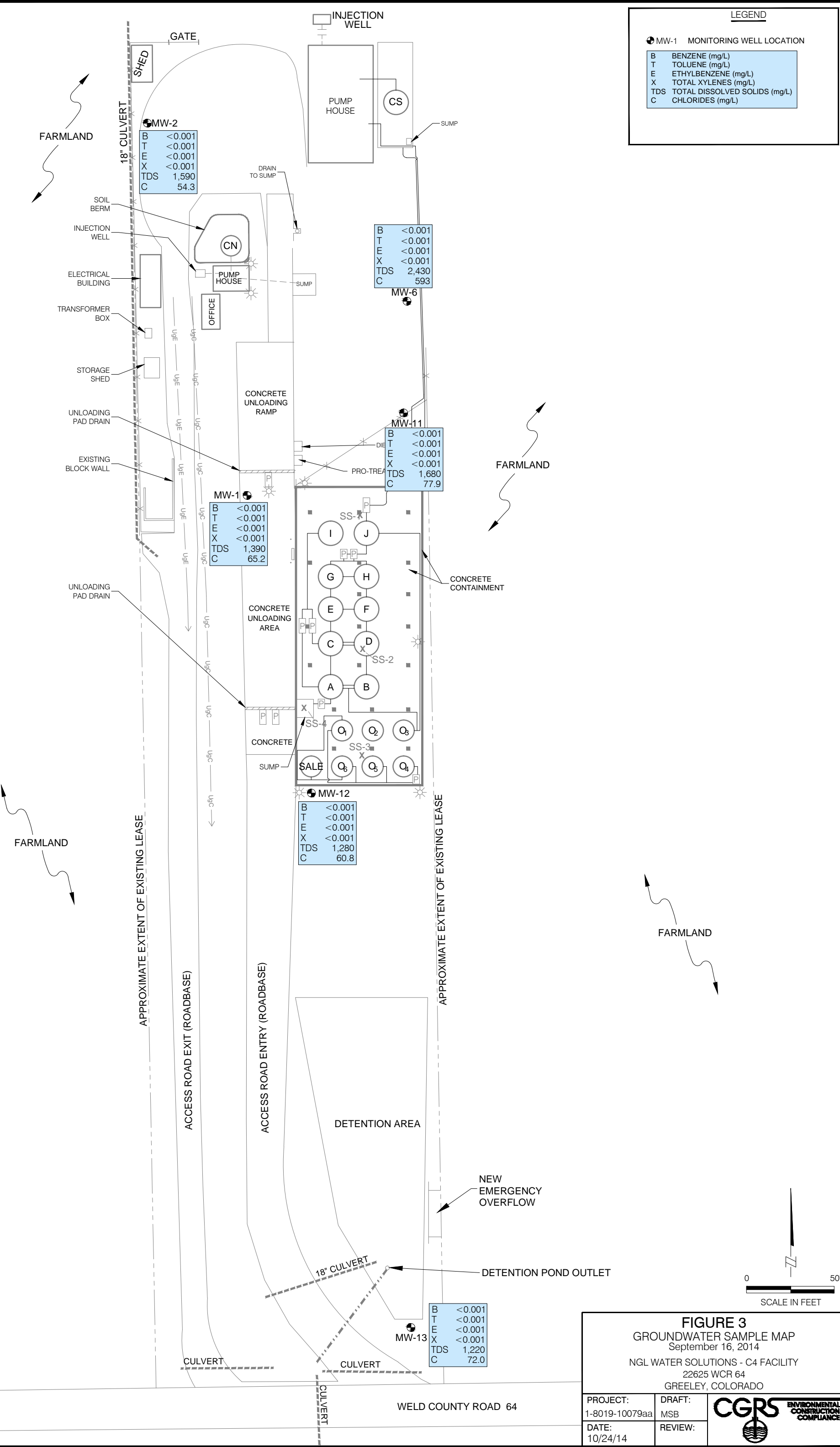


FIGURE 3
GROUNDWATER SAMPLE MAP
September 16, 2014
NGL WATER SOLUTIONS - C4 FACILITY
22625 WCR 64
GREELEY, COLORADO

PROJECT: 1-8019-10079aa	DRAFT: MSB
DATE: 10/24/14	REVIEW:

CGRS ENVIRONMENTAL CONSTRUCTION COMPLIANCE



TECHNOLOGY LABORATORY, INC.

CENTRE PROFESSIONAL PARK

1012 Centre Avenue
Fort Collins, Colorado 80526
(970) 490-1414

CERTIFICATE OF ANALYSIS

CGRS, INC.
1301 Academy Court
Fort Collins, CO 80524

Sample ID: MW-1

Laboratory ID B2002-01

Sampled: 09/16/14

Received: 09/17/14

Project No.: 1-8019-10079aa

Matrix: Water

<u>CAS Number</u>	<u>Parameter</u>	<u>Result</u>	<u>Units</u>	<u>MDL</u>	<u>Method</u>	<u>Date Analyzed</u>
71-43-2	Benzene	< 0.001	mg/L	0.001	EPA-8260B	09/19/14
108-88-3	Toluene	< 0.001	mg/L	0.001	EPA-8260B	09/19/14
100-41-4	Ethylbenzene	< 0.001	mg/L	0.001	EPA-8260B	09/19/14
1330-20-7	Total Xylenes	< 0.001	mg/L	0.001	EPA-8260B	09/19/14
16887-00-6	Chloride	65.2	mg/L	1	EPA-300.1	09/17/14
N/A	Total Dissolved Solids (TDS)	1390	mg/L	5	SM-2540 C	09/22/14

QA/QC SURROGATE RECOVERIES

<u>Compound</u>	<u>% Recovery</u>	<u>% Rec. Limits</u>
Dibromofluoromethane	79	68-120
Toluene-d8	92	81-128
Bromofluorobenzene	110	70-113

TECHNOLOGY LABORATORY, INC.

The results contained in this report
relate only to those items tested.



TECHNOLOGY LABORATORY, INC.

CENTRE PROFESSIONAL PARK

1012 Centre Avenue
Fort Collins, Colorado 80526
(970) 490-1414

CERTIFICATE OF ANALYSIS

CGRS, INC.
1301 Academy Court
Fort Collins, CO 80524

Sample ID: MW-2

Laboratory ID B2002-02

Sampled: 09/16/14

Received: 09/17/14

Project No.: 1-8019-10079aa

Matrix: Water

<u>CAS Number</u>	<u>Parameter</u>	<u>Result</u>	<u>Units</u>	<u>MDL</u>	<u>Method</u>	<u>Date Analyzed</u>
71-43-2	Benzene	< 0.001	mg/L	0.001	EPA-8260B	09/19/14
108-88-3	Toluene	< 0.001	mg/L	0.001	EPA-8260B	09/19/14
100-41-4	Ethylbenzene	< 0.001	mg/L	0.001	EPA-8260B	09/19/14
1330-20-7	Total Xylenes	< 0.001	mg/L	0.001	EPA-8260B	09/19/14
16887-00-6	Chloride	54.3	mg/L	1	EPA-300.1	09/17/14
N/A	Total Dissolved Solids (TDS)	1590	mg/L	5	SM-2540 C	09/22/14

QA/QC SURROGATE RECOVERIES

<u>Compound</u>	<u>% Recovery</u>	<u>% Rec. Limits</u>
Dibromofluoromethane	81	68-120
Toluene-d8	91	81-128
Bromofluorobenzene	111	70-113

TECHNOLOGY LABORATORY, INC.

The results contained in this report
relate only to those items tested.



TECHNOLOGY LABORATORY, INC.

CENTRE PROFESSIONAL PARK

1012 Centre Avenue
Fort Collins, Colorado 80526
(970) 490-1414

CERTIFICATE OF ANALYSIS

CGRS, INC.
1301 Academy Court
Fort Collins, CO 80524

Sample ID: MW-6

Laboratory ID B2002-03

Sampled: 09/16/14

Received: 09/17/14

Project No.: 1-8019-10079aa

Matrix: Water

<u>CAS Number</u>	<u>Parameter</u>	<u>Result</u>	<u>Units</u>	<u>MDL</u>	<u>Method</u>	<u>Date Analyzed</u>
71-43-2	Benzene	< 0.001	mg/L	0.001	EPA-8260B	09/19/14
108-88-3	Toluene	< 0.001	mg/L	0.001	EPA-8260B	09/19/14
100-41-4	Ethylbenzene	< 0.001	mg/L	0.001	EPA-8260B	09/19/14
1330-20-7	Total Xylenes	< 0.001	mg/L	0.001	EPA-8260B	09/19/14
16887-00-6	Chloride	593	mg/L	1	EPA-300.1	09/17/14
N/A	Total Dissolved Solids (TDS)	2430	mg/L	5	SM-2540 C	09/22/14

QA/QC SURROGATE RECOVERIES

<u>Compound</u>	<u>% Recovery</u>	<u>% Rec. Limits</u>
Dibromofluoromethane	79	68-120
Toluene-d8	92	81-128
Bromofluorobenzene	110	70-113

TECHNOLOGY LABORATORY, INC.

The results contained in this report
relate only to those items tested.



TECHNOLOGY LABORATORY, INC.

CENTRE PROFESSIONAL PARK

1012 Centre Avenue
Fort Collins, Colorado 80526
(970) 490-1414

CERTIFICATE OF ANALYSIS

CGRS, INC.
1301 Academy Court
Fort Collins, CO 80524

Sample ID: MW-11

Laboratory ID B2002-04

Sampled: 09/16/14

Received: 09/17/14

Project No.: 1-8019-10079aa

Matrix: Water

<u>CAS Number</u>	<u>Parameter</u>	<u>Result</u>	<u>Units</u>	<u>MDL</u>	<u>Method</u>	<u>Date Analyzed</u>
71-43-2	Benzene	< 0.001	mg/L	0.001	EPA-8260B	09/19/14
108-88-3	Toluene	< 0.001	mg/L	0.001	EPA-8260B	09/19/14
100-41-4	Ethylbenzene	< 0.001	mg/L	0.001	EPA-8260B	09/19/14
1330-20-7	Total Xylenes	< 0.001	mg/L	0.001	EPA-8260B	09/19/14
16887-00-6	Chloride	77.9	mg/L	1	EPA-300.1	09/17/14
N/A	Total Dissolved Solids (TDS)	1680	mg/L	5	SM-2540 C	09/22/14

QA/QC SURROGATE RECOVERIES

<u>Compound</u>	<u>% Recovery</u>	<u>% Rec. Limits</u>
Dibromofluoromethane	80	68-120
Toluene-d8	90	81-128
Bromofluorobenzene	110	70-113

TECHNOLOGY LABORATORY, INC.

The results contained in this report
relate only to those items tested.



TECHNOLOGY LABORATORY, INC.

CENTRE PROFESSIONAL PARK

1012 Centre Avenue
Fort Collins, Colorado 80526
(970) 490-1414

CERTIFICATE OF ANALYSIS

CGRS, INC.
1301 Academy Court
Fort Collins, CO 80524

Sample ID: MW-12

Laboratory ID B2002-05

Sampled: 09/16/14

Received: 09/17/14

Project No.: 1-8019-10079aa

Matrix: Water

<u>CAS Number</u>	<u>Parameter</u>	<u>Result</u>	<u>Units</u>	<u>MDL</u>	<u>Method</u>	<u>Date Analyzed</u>
71-43-2	Benzene	< 0.001	mg/L	0.001	EPA-8260B	09/19/14
108-88-3	Toluene	< 0.001	mg/L	0.001	EPA-8260B	09/19/14
100-41-4	Ethylbenzene	< 0.001	mg/L	0.001	EPA-8260B	09/19/14
1330-20-7	Total Xylenes	< 0.001	mg/L	0.001	EPA-8260B	09/19/14
16887-00-6	Chloride	60.8	mg/L	1	EPA-300.1	09/17/14
N/A	Total Dissolved Solids (TDS)	1280	mg/L	5	SM-2540 C	09/22/14

QA/QC SURROGATE RECOVERIES

<u>Compound</u>	<u>% Recovery</u>	<u>% Rec. Limits</u>
Dibromofluoromethane	81	68-120
Toluene-d8	90	81-128
Bromofluorobenzene	110	70-113

TECHNOLOGY LABORATORY, INC.

The results contained in this report
relate only to those items tested.



TECHNOLOGY LABORATORY, INC.

CENTRE PROFESSIONAL PARK

1012 Centre Avenue
Fort Collins, Colorado 80526
(970) 490-1414

CERTIFICATE OF ANALYSIS

CGRS, INC.
1301 Academy Court
Fort Collins, CO 80524

Sample ID: MW-13
Laboratory ID B2002-06

Sampled: 09/16/14
Received: 09/17/14

Project No.: 1-8019-10079aa
Matrix: Water

<u>CAS Number</u>	<u>Parameter</u>	<u>Result</u>	<u>Units</u>	<u>MDL</u>	<u>Method</u>	<u>Date Analyzed</u>
71-43-2	Benzene	< 0.001	mg/L	0.001	EPA-8260B	09/19/14
108-88-3	Toluene	< 0.001	mg/L	0.001	EPA-8260B	09/19/14
100-41-4	Ethylbenzene	< 0.001	mg/L	0.001	EPA-8260B	09/19/14
1330-20-7	Total Xylenes	< 0.001	mg/L	0.001	EPA-8260B	09/19/14
16887-00-6	Chloride	72.0	mg/L	1	EPA-300.1	09/17/14
N/A	Total Dissolved Solids (TDS)	1220	mg/L	5	SM-2540 C	09/22/14

QA/QC SURROGATE RECOVERIES

<u>Compound</u>	<u>% Recovery</u>	<u>% Rec. Limits</u>
Dibromofluoromethane	81	68-120
Toluene-d8	92	81-128
Bromofluorobenzene	110	70-113

TECHNOLOGY LABORATORY, INC.

The results contained in this report
relate only to those items tested.



TECHNOLOGY LABORATORY, INC.

1012 CENTRE AVENUE
FORT COLLINS, CO 80526
Phone: (970)490-1414 Fax: (970)472-5488
www.techlabusa.com info@techlabusa.com

W.O. NUMBER B2002

CHAIN-OF-CUSTODY REPORT

COMPANY NAME: <u>CGRS</u>		ANALYSIS REQUESTED										OTHER										
SAMPLE ID	DATE/TIME SAMPLED	SAMPLE MATRIX: SOIL (S) AIR (A)		NUMBER OF CONTAINERS	BTEX / MTBE / TPH	TEPH (DRO)	OIL & GREASE	VOC 624 / 8260 (TOTAL / TCLP)	SVOC 625 / 8270 / PAH (TOTAL / TCLP)	pH / TSS / TDS	RCRA 8 METALS (TOTAL / TCLP / DISSOLVED)	React. / Ignite. / Corr. / Paint Filtr.	BTEX/TPH Emissions Vapor	BTEX Soil Vapor	TO-14 / TO-15 / TVPH Vapor	NITRATE / NITRITE / AMMONIA	BOD / COD	PCBs	Chlorides	HOLD AFTER ANALYSIS	HOLD, DON'T ANALYZE	
		AQUEOUS (W)	OTHER (O)																			
01	MW-1	W	3	3	X					X												
02	MW-2	W	3	3	X					X												
03	MW-6	W	3	3	X					X												
04	MW-11	W	3	3	X					X												
05	MW-12	W	3	3	X					X												
06	MW-13	W	3	3	X					X												

PAGE 1 OF 1

TURNAROUND TIME

☒ Normal (≤10 Working Days)
☐ 3 Day (1.5 x Normal Rates)
☐ Next Day (2 x Normal Rates)
☐ Same Day (4 x Normal Rates)

NPDES PERMIT? YES NO

COMMENTS:

LOGGED IN BY: W Sample ☒ 6°C ☐ None ☐ Other
Preservative: ☐ Acid ☐ Filtered

RECEIVED BY: GW DATE: 9/17/14
COMPANY: TLT TIME: 8:20am
RECEIVED BY: DATE: TIME:
COMPANY: DATE: TIME:

ATTACHMENT C

C6 – Platteville: Facility Tables, Figures and Analytical Data

TABLE 3

Summary of Groundwater Elevation and Analytical Data

NGL Water Solutions C6 Facility
13159 WCR 39
Platteville, Colorado

CGRS Project: 1-8019-10695aa

Sample ID	Date	Benzene	Toluene	Ethyl-Benzene	Xylenes	TVPH	TEPH	TRPH	Chlorides	TDS	Reference Elevation	Depth To Water	Groundwater Elevation
		(mg/L)	(mg/L)	(mg/L)	(mg/L)	(mg/L)	(mg/L)	(mg/L)	(mg/L)	(mg/L)	(ft)	(ft)	(ft)
MW-1	04/05/06	<0.0005	<0.0005	<0.0005	<0.0005	<0.0005	<0.0005	NA	NA	NA	NS	17.12	NS
MW-1	04/12/07	NA	NA	NA	NA	NA	NA	NA	NA	NA	NS	17.18	NS
MW-1	11/15/07	NA	NA	NA	NA	NA	NA	NA	NA	NA	NS	16.34	NS
MW-2	04/05/06	NA	NA	NA	NA	NA	NA	NA	NA	NA	NS	DRY	DRY
MW-2	04/12/07	NA	NA	NA	NA	NA	NA	NA	NA	NA	NS	DRY	DRY
SB-4	04/05/06	<0.0005	<0.0005	<0.0005	<0.0005	<0.0005	<0.0005	NA	NA	NA	NS	NS	NS
MW-3	04/12/07	0.0021	0.0025	0.0026	0.008	<0.0005	NA	NA	NA	NA	NS	39.37	NS
MW-3	11/15/07	NA	NA	NA	NA	NA	NA	NA	NA	NA	NS	29.52	NS
MW-3	11/16/07	<0.0005	<0.0005	<0.0005	<0.0005	<0.0005	NA	NA	13.4	800	97.54	29.63	67.91
MW-3	03/04/08	<0.0005	<0.0005	<0.0005	<0.0005	<0.0005	NA	NA	NA	NA	97.54	29.27	68.27
MW-3	09/03/08	<0.001	<0.001	<0.001	<0.001	<0.001	NA	NA	NA	NA	97.54	27.59	69.95
MW-3	03/06/09	<0.001	<0.001	<0.001	<0.001	NA	NA	NA	84.7	860	97.54	26.70	70.84
MW-3	06/10/09	<0.001	<0.001	<0.001	<0.001	NA	NA	NA	126	1,590	97.54	25.48	72.06
MW-3	09/15/09	<0.001	<0.001	<0.001	<0.001	NA	NA	NA	177	2,820	97.54	24.31	73.23
MW-3	12/11/09	<0.001	<0.001	<0.001	<0.001	NA	NA	NA	144	1,750	97.54	23.75	73.79
MW-3	03/16/10	<0.001	<0.001	<0.001	<0.001	NA	NA	NA	72.2	970	97.54	24.47	73.07
MW-3	06/08/10	<0.001	<0.001	<0.001	<0.001	NA	NA	NA	200	2,880	97.54	23.04	74.50
MW-3	09/01/10	<0.001	<0.001	<0.001	<0.001	NA	NA	NA	246	3,140	97.54	22.30	75.24
MW-3	12/06/10	<0.001	<0.001	<0.001	<0.001	NA	NA	NA	178	2,450	97.54	22.53	75.01
MW-3	03/08/11	<0.001	<0.001	<0.001	<0.001	NA	NA	NA	132	1,690	97.54	22.84	74.70
MW-3	06/08/11	<0.001	<0.001	<0.001	<0.001	NA	NA	NA	197	2,750	97.54	22.42	75.12
MW-3	09/12/11	<0.001	<0.001	<0.001	<0.001	NA	NA	NA	213	2,980	97.54	22.22	75.32
MW-3	12/08/11	<0.001	<0.001	<0.001	<0.001	NA	NA	NA	180	2,340	97.54	22.22	75.32
MW-3	03/12/12	<0.001	<0.001	<0.001	<0.001	NA	NA	NA	136	1,760	97.54	22.48	75.06
MW-3	06/12/12	<0.001	<0.001	<0.001	<0.001	NA	NA	NA	156	2,210	97.54	22.91	74.63
MW-3	09/10/12	<0.001	<0.001	<0.001	<0.001	NA	NA	NA	110	1,880	97.54	22.84	74.70
MW-3	01/28/13	<0.001	<0.001	<0.001	<0.001	NA	NA	NA	199	2,650	97.54	22.68	74.86
MW-3	03/14/13	<0.001	<0.001	<0.001	<0.001	NA	NA	NA	115	1,210	97.54	23.31	74.23
MW-3	09/10/13	<0.001	<0.001	<0.001	<0.001	NA	NA	NA	143	1,150	97.54	23.67	73.87
MW-3	03/12/14	<0.001	<0.001	<0.001	<0.001	NA	NA	NA	192	1,430	97.54	23.04	74.50
MW-3	09/16/14	<0.001	<0.001	<0.001	<0.001	NA	NA	NA	336	1,700	97.54	22.57	74.97
MW-4	11/16/07	<0.0005	<0.0005	<0.0005	<0.0005	<0.0005	NA	NA	231	2,520	102.80	14.59	88.21
MW-4	03/04/08	<0.0005	<0.0005	<0.0005	<0.0005	<0.0005	NA	NA	NA	NA	102.80	14.17	88.63
MW-4	09/03/08	<0.001	<0.001	<0.001	<0.001	<0.001	NA	NA	NA	NA	102.80	12.78	90.02
MW-4	03/06/09	<0.001	<0.001	<0.001	<0.001	NA	NA	NA	355	2,630	102.80	13.71	89.09
MW-4	06/10/09	<0.001	<0.001	<0.001	<0.001	NA	NA	NA	291	2,760	102.80	11.05	91.75

TABLE 3

Summary of Groundwater Elevation and Analytical Data

NGL Water Solutions C6 Facility
13159 WCR 39
Platteville, Colorado

CGRS Project: 1-8019-10695aa

Sample ID	Date	Benzene	Toluene	Ethyl-Benzene	Xylenes	TVPH	TEPH	TRPH	Chlorides	TDS	Reference Elevation	Depth To Water	Groundwater Elevation
		(mg/L)	(mg/L)	(mg/L)	(mg/L)	(mg/L)	(mg/L)	(mg/L)	(mg/L)	(mg/L)	(ft)	(ft)	(ft)
MW-4	09/15/09	<0.001	<0.001	<0.001	<0.001	NA	NA	NA	311	2,720	102.80	11.37	91.43
MW-4	12/11/09	<0.001	<0.001	<0.001	<0.001	NA	NA	NA	374	2,780	102.80	12.25	90.55
MW-4	03/16/10	<0.001	<0.001	<0.001	<0.001	NA	NA	NA	379	2,690	102.80	13.02	89.78
MW-4	06/08/10	<0.001	<0.001	<0.001	<0.001	NA	NA	NA	374	3,010	102.80	10.64	92.16
MW-4	09/01/10	<0.001	<0.001	<0.001	<0.001	NA	NA	NA	448	3,070	102.80	10.14	92.66
MW-4	12/06/10	<0.001	<0.001	<0.001	<0.001	NA	NA	NA	388	3,080	102.80	11.23	91.57
MW-4	03/08/11	<0.001	<0.001	<0.001	<0.001	NA	NA	NA	416	2,910	102.80	12.05	90.75
MW-4	06/08/11	<0.001	<0.001	<0.001	<0.001	NA	NA	NA	423	3,130	102.80	10.19	92.61
MW-4	09/12/11	<0.001	<0.001	<0.001	<0.001	NA	NA	NA	407	3,110	102.80	10.66	92.14
MW-4	12/08/11	<0.001	<0.001	<0.001	<0.001	NA	NA	NA	376	3,130	102.80	11.33	91.47
MW-4	03/12/12	<0.001	<0.001	<0.001	<0.001	NA	NA	NA	356	3,090	102.80	12.00	90.80
MW-4	06/12/12	<0.001	<0.001	<0.001	<0.001	NA	NA	NA	330	3,040	102.80	11.99	90.81
MW-4	09/10/12	<0.001	<0.001	<0.001	<0.001	NA	NA	NA	307	3,280	102.80	12.39	90.41
MW-4	01/28/13	<0.001	<0.001	<0.001	<0.001	NA	NA	NA	445	6,460	102.80	13.54	89.26
MW-4	03/15/13	<0.001	<0.001	<0.001	<0.001	NA	NA	NA	375	3,110	102.80	13.52	89.28
MW-4	09/10/13	<0.001	<0.001	<0.001	<0.001	NA	NA	NA	338	3,120	102.80	12.32	90.48
MW-4*	03/12/14	<0.001	<0.001	<0.001	<0.001	NA	NA	NA	226	3,200	102.51	12.61	89.90
MW-4	09/16/14	<0.001	<0.001	<0.001	<0.001	NA	NA	NA	413	3,210	102.51	10.34	92.17
MW-5	11/16/07	<0.0005	0.0019	0.0007	0.0036	<0.0005	NA	NA	1,028	9,600	97.40	31.48	65.92
MW-5	03/04/08	<0.0005	<0.0005	<0.0005	<0.0005	<0.0005	NA	NA	NA	NA	97.40	29.68	67.72
MW-5	09/03/08	<0.001	<0.001	<0.001	<0.001	<0.001	NA	NA	NA	NA	97.40	28.49	68.91
MW-5	03/06/09	<0.001	<0.001	<0.001	<0.001	NA	NA	NA	887	7,130	97.40	26.28	71.12
MW-5	06/10/09	<0.001	<0.001	<0.001	<0.001	NA	NA	NA	656	6,170	97.40	25.71	71.69
MW-5	09/15/09	<0.001	<0.001	<0.001	<0.001	NA	NA	NA	712	6,660	97.40	24.87	72.53
MW-5	12/11/09	<0.001	<0.001	<0.001	<0.001	NA	NA	NA	652	5,220	97.40	23.59	73.81
MW-5	03/16/10	<0.001	<0.001	<0.001	<0.001	NA	NA	NA	679	4,670	97.40	24.20	73.20
MW-5	06/08/10	<0.001	<0.001	<0.001	<0.001	NA	NA	NA	727	5,880	97.40	23.06	74.34
MW-5	09/01/10	<0.001	<0.001	<0.001	<0.001	NA	NA	NA	667	4,680	97.40	22.51	74.89
MW-5	12/06/10	NA	NA	NA	NA	NA	NA	NA	NA	NA	97.40	INA	-
MW-5	03/08/11	<0.001	<0.001	<0.001	<0.001	NA	NA	NA	617	4,480	94.61	19.70	74.91
MW-5	06/08/11	<0.001	<0.001	<0.001	<0.001	NA	NA	NA	528	4,180	94.61	19.41	75.20
MW-5	09/12/11	<0.001	<0.001	<0.001	<0.001	NA	NA	NA	716	5,110	94.61	19.13	75.48
MW-5	12/08/11	<0.001	<0.001	<0.001	<0.001	NA	NA	NA	600	4,820	94.61	18.96	75.65
MW-5	03/12/12	<0.001	<0.001	<0.001	<0.001	NA	NA	NA	474	3,470	94.61	19.31	75.30
MW-5	06/12/12	<0.001	<0.001	<0.001	<0.001	NA	NA	NA	447	3,490	94.61	19.53	75.08
MW-5	09/10/12	<0.001	<0.001	<0.001	<0.001	NA	NA	NA	414	3,605	94.61	19.62	74.99
MW-5	01/28/13	<0.001	<0.001	<0.001	<0.001	NA	NA	NA	782	6,810	94.61	19.74	74.87
MW-5	03/14/13	<0.001	<0.001	<0.001	<0.001	NA	NA	NA	556	3,910	94.61	19.95	74.66
MW-5	09/10/13	<0.001	<0.001	<0.001	<0.001	NA	NA	NA	491	3,930	94.61	20.21	74.40
MW-5	03/12/14	<0.001	<0.001	<0.001	<0.001	NA	NA	NA	312	3,800	94.61	19.70	74.91

TABLE 3

Summary of Groundwater Elevation and Analytical Data

NGL Water Solutions C6 Facility
13159 WCR 39
Platteville, Colorado

CGRS Project: 1-8019-10695aa

Sample ID	Date	Benzene	Toluene	Ethyl-Benzene	Xylenes	TVPH	TEPH	TRPH	Chlorides	TDS	Reference Elevation	Depth To Water	Groundwater Elevation
		(mg/L)	(mg/L)	(mg/L)	(mg/L)	(mg/L)	(mg/L)	(mg/L)	(mg/L)	(mg/L)	(ft)	(ft)	(ft)
MW-5	09/16/14	<0.001	<0.001	<0.001	<0.001	NA	NA	NA	562	4,050	94.61	18.95	75.66
MW-6	11/16/07	<0.0005	0.0012	<0.0005	0.0019	<0.0005	NA	NA	880	10,100	NS	47.25	NS
MW-6	03/04/08	<0.0005	<0.0005	<0.0005	<0.0005	<0.0005	NA	NA	NA	NA	95.21	25.48	69.73
MW-6	09/03/08	<0.001	<0.001	<0.001	<0.001	<0.001	NA	NA	NA	NA	95.21	25.13	70.08
MW-6	03/06/09	<0.001	<0.001	<0.001	<0.001	NA	NA	NA	824	8,470	95.21	23.12	72.09
MW-6	06/10/09	<0.001	<0.001	<0.001	<0.001	NA	NA	NA	705	8,350	95.21	22.82	72.39
MW-6	09/15/09	<0.001	<0.001	<0.001	<0.001	NA	NA	NA	779	9,140	95.21	21.15	74.06
MW-6	12/11/09	<0.001	<0.001	<0.001	<0.001	NA	NA	NA	885	8,810	95.21	20.09	75.12
MW-6	03/16/10	<0.001	<0.001	<0.001	<0.001	NA	NA	NA	958	7,990	95.21	19.82	75.39
MW-6	06/08/10	<0.001	<0.001	<0.001	<0.001	NA	NA	NA	854	9,020	95.21	19.58	75.63
MW-6	09/01/10	<0.001	<0.001	<0.001	<0.001	NA	NA	NA	915	8,250	95.21	18.94	76.27
MW-6	12/06/10	<0.001	<0.001	<0.001	<0.001	NA	NA	NA	803	7,840	95.21	19.58	75.63
MW-6	03/08/11	<0.001	<0.001	<0.001	<0.001	NA	NA	NA	947	7,810	95.21	18.97	76.24
MW-6	06/08/11	<0.001	<0.001	<0.001	<0.001	NA	NA	NA	862	7,930	95.21	19.83	75.38
MW-6	09/12/11	<0.001	<0.001	<0.001	<0.001	NA	NA	NA	820	8,440	95.21	18.83	76.38
MW-6	12/08/11	<0.001	<0.001	<0.001	<0.001	NA	NA	NA	831	8,420	95.21	18.96	76.25
MW-6	03/12/12	<0.001	<0.001	<0.001	<0.001	NA	NA	NA	847	7,810	95.21	17.56	77.65
MW-6	06/12/12	<0.001	<0.001	<0.001	<0.001	NA	NA	NA	745	7,810	95.21	19.01	76.20
MW-6	09/10/12	<0.001	<0.001	<0.001	<0.001	NA	NA	NA	694	8,485	95.21	18.12	77.09
MW-6	01/28/13	<0.001	<0.001	<0.001	<0.001	NA	NA	NA	891	9,480	95.21	17.85	77.36
MW-6	03/14/13	<0.001	<0.001	<0.001	<0.001	NA	NA	NA	868	9,040	95.21	18.33	76.88
MW-6	09/10/13	<0.001	<0.001	<0.001	<0.001	NA	NA	NA	811	8,380	95.21	18.75	76.46
MW-6	03/13/14	<0.001	<0.001	<0.001	<0.001	NA	NA	NA	631	8,350	95.21	17.79	77.42
MW-6	09/16/14	<0.001	<0.001	<0.001	<0.001	NA	NA	NA	811	8,190	95.21	18.04	77.17
Unloading Pad MP	09/15/09	NA	NA	NA	NA	NA	NA	NA	NA	NA	-	DRY	-
Unloading Pad MP	12/11/09	1.17	1.89	0.020	3.55	NA	NA	150	NA	NA	-	NM	-
Unloading Pad MP	03/16/10	NA	NA	NA	NA	NA	NA	NA	NA	NA	-	DRY	-
Unloading Pad MP	06/08/10	NA	NA	NA	NA	NA	NA	NA	NA	NA	-	DRY	-
Unloading Pad MP	09/01/10	NA	NA	NA	NA	NA	NA	NA	NA	NA	-	DRY	-
Unloading Pad MP	12/06/10	NA	NA	NA	NA	NA	NA	NA	NA	NA	-	DRY	-
Unloading Pad MP	03/08/11	NA	NA	NA	NA	NA	NA	NA	NA	NA	-	DRY	-
Unloading Pad MP	06/08/11	NA	NA	NA	NA	NA	NA	NA	NA	NA	-	DRY	-
Unloading Pad MP	09/12/11	NA	NA	NA	NA	NA	NA	NA	NA	NA	-	DRY	-
Unloading Pad MP	12/08/11	NA	NA	NA	NA	NA	NA	NA	NA	NA	-	DRY	-
Unloading Pad MP	03/12/12	0.103	0.048	0.050	3.12	NA	NA	288	NA	NA	-	3.30	-
Unloading Pad MP	06/12/12	<0.001	<0.001	<0.001	0.139	NA	NA	22.5	NA	NA	-	2.88	-
Unloading Pad MP	09/10/12	0.071	<0.001	<0.001	0.315	NA	NA	34.1	NA	NA	-	2.75	-
Unloading Pad MP	01/28/13	2.84	<0.001	<0.001	11.4	NA	NA	1154	NA	NA	-	3.36	-
Unloading Pad MP	03/14/13	0.450	0.113	0.152	4.58	NA	NA	375	NA	NA	-	2.80	-

TABLE 3

Summary of Groundwater Elevation and Analytical Data

NGL Water Solutions C6 Facility
13159 WCR 39
Platteville, Colorado

CGRS Project: 1-8019-10695aa

Sample ID	Date	Benzene	Toluene	Ethyl-Benzene	Xylenes	TVPH	TEPH	TRPH	Chlorides	TDS	Reference Elevation	Depth To Water	Groundwater Elevation
		(mg/L)	(mg/L)	(mg/L)	(mg/L)	(mg/L)	(mg/L)	(mg/L)	(mg/L)	(mg/L)	(ft)	(ft)	(ft)
Unloading Pad MP	09/10/13	NA	NA	NA	NA	NA	NA	NA	NA	NA	-	DRY	-
Unloading Pad MP	03/13/14	NA	NA	NA	NA	NA	NA	NA	NA	NA	-	DRY	-
Unloading Pad MP	09/16/14	<0.001	<0.001	0.02	0.24	NA	NA	84.8	NA	NA	-	2.53	-
Sump MP	03/16/10	NA	NA	NA	NA	NA	NA	NA	NA	NA	-	12.84	-
Sump MP	06/08/10	NA	NA	NA	NA	NA	NA	NA	NA	NA	-	DRY	-
Sump MP	09/01/10	NA	NA	NA	NA	NA	NA	NA	NA	NA	-	DRY	-
Sump MP	12/06/10	NA	NA	NA	NA	NA	NA	NA	NA	NA	-	DRY	-
Sump MP	03/08/11	NA	NA	NA	NA	NA	NA	NA	NA	NA	-	DRY	-
Sump MP	06/08/11	NA	NA	NA	NA	NA	NA	NA	NA	NA	-	DRY	-
Sump MP	09/12/11	NA	NA	NA	NA	NA	NA	NA	NA	NA	-	DRY	-
Sump MP	12/08/11	NA	NA	NA	NA	NA	NA	NA	NA	NA	-	DRY	-
Sump MP	03/12/12	NA	NA	NA	NA	NA	NA	NA	NA	NA	-	DRY	-
Sump MP	06/12/12	NA	NA	NA	NA	NA	NA	NA	NA	NA	-	DRY	-
Sump MP	09/10/12	NA	NA	NA	NA	NA	NA	NA	NA	NA	-	DRY	-
Sump MP	01/28/13	NA	NA	NA	NA	NA	NA	NA	NA	NA	-	DRY	-
Sump MP	03/14/13	NA	NA	NA	NA	NA	NA	NA	NA	NA	-	DRY	-
Sump MP	09/10/13	NA	NA	NA	NA	NA	NA	NA	NA	NA	-	DRY	-
Sump MP	03/13/14	NA	NA	NA	NA	NA	NA	NA	NA	NA	-	DRY	-
MCL		0.005	1	0.7	10	-	-	-	-	-	-	-	-
MDL		0.001	0.001	0.001	0.001	0.5	0.5	0.5	-	-	-	-	-

Notes:

Values in **bold face** exceed MCLs

TVPH = Total Volatile Petroleum Hydrocarbons

TEPH = Total Extractable Petroleum Hydrocarbons

TRPH = Total Recoverable Petroleum Hydrocarbons; Hexane extractable materials

MP = Monitoring Point: Monitors the secondary containment liners below the concrete unloading pad and the concrete sump.

MCL = COGCC Maximum Contaminant Level

MDL = Method Detection Limit

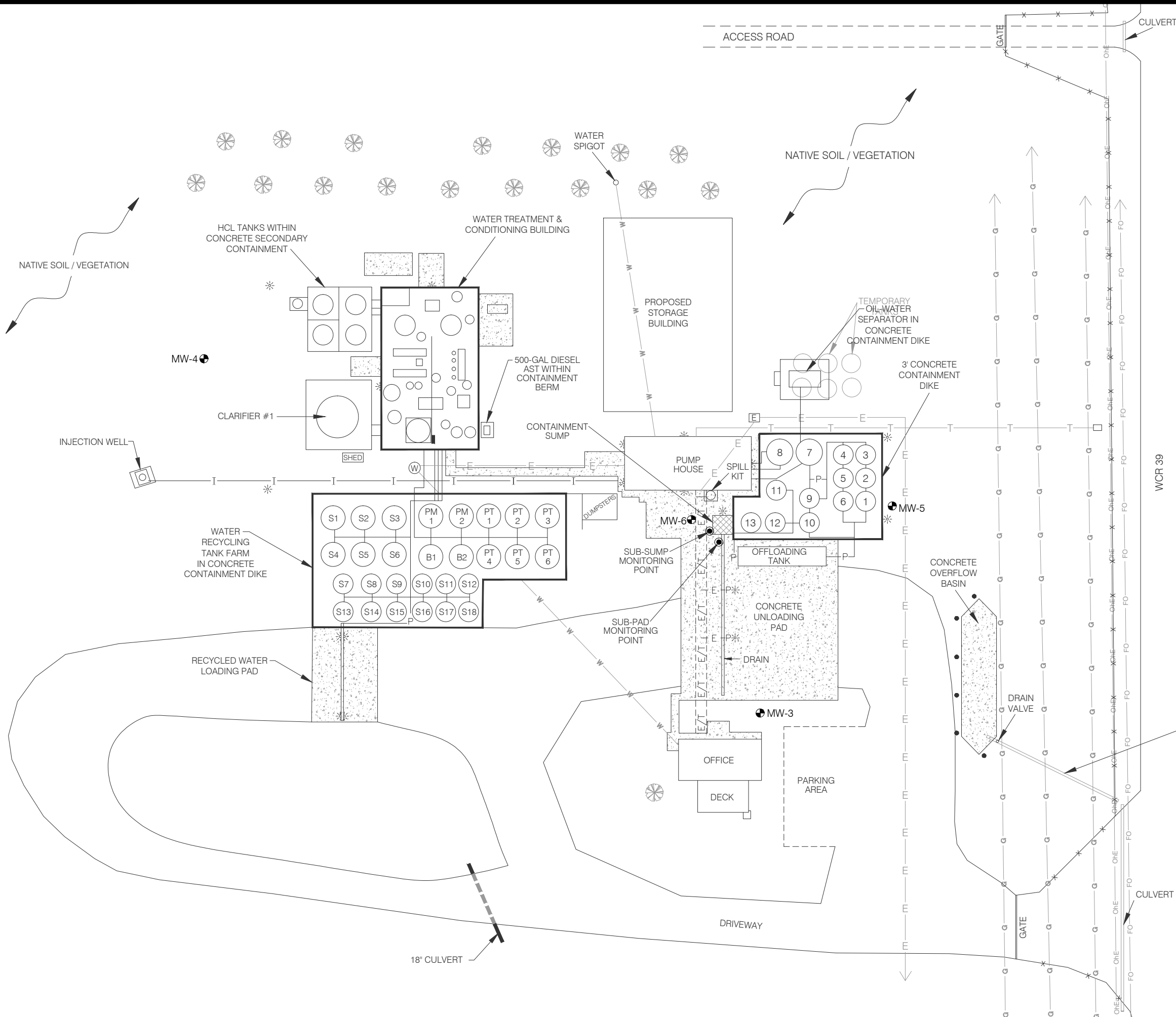
NS = Not Surveyed

NA = Not Analyzed

NM = Not measured

INA = Inaccessible

* MW-4 damaged 1st Quarter 2014. Damage repaired and well resurveyed on 3/12/14. Groundwater measurement obtained after well resurvey.



LEGEND

- MW-3 MONITORING WELL LOCATION
- TREE
- ELECTRIAL TRANSFORMER
- BOLLARD
- PUMP
- OVERHEAD LIGHT
- WATER WELL
- E / T ELECTRICAL/TELEPHONE UTILITY CORRIDOR
- FENCE LINE
- NATURAL GAS LINE
- OVERHEAD ELECTRIC LINE
- FIBER OPTICS LINE
- WATER LINE
- INJECTION WELL WATER LINE
- ELECTRICAL LINE

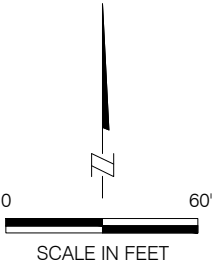
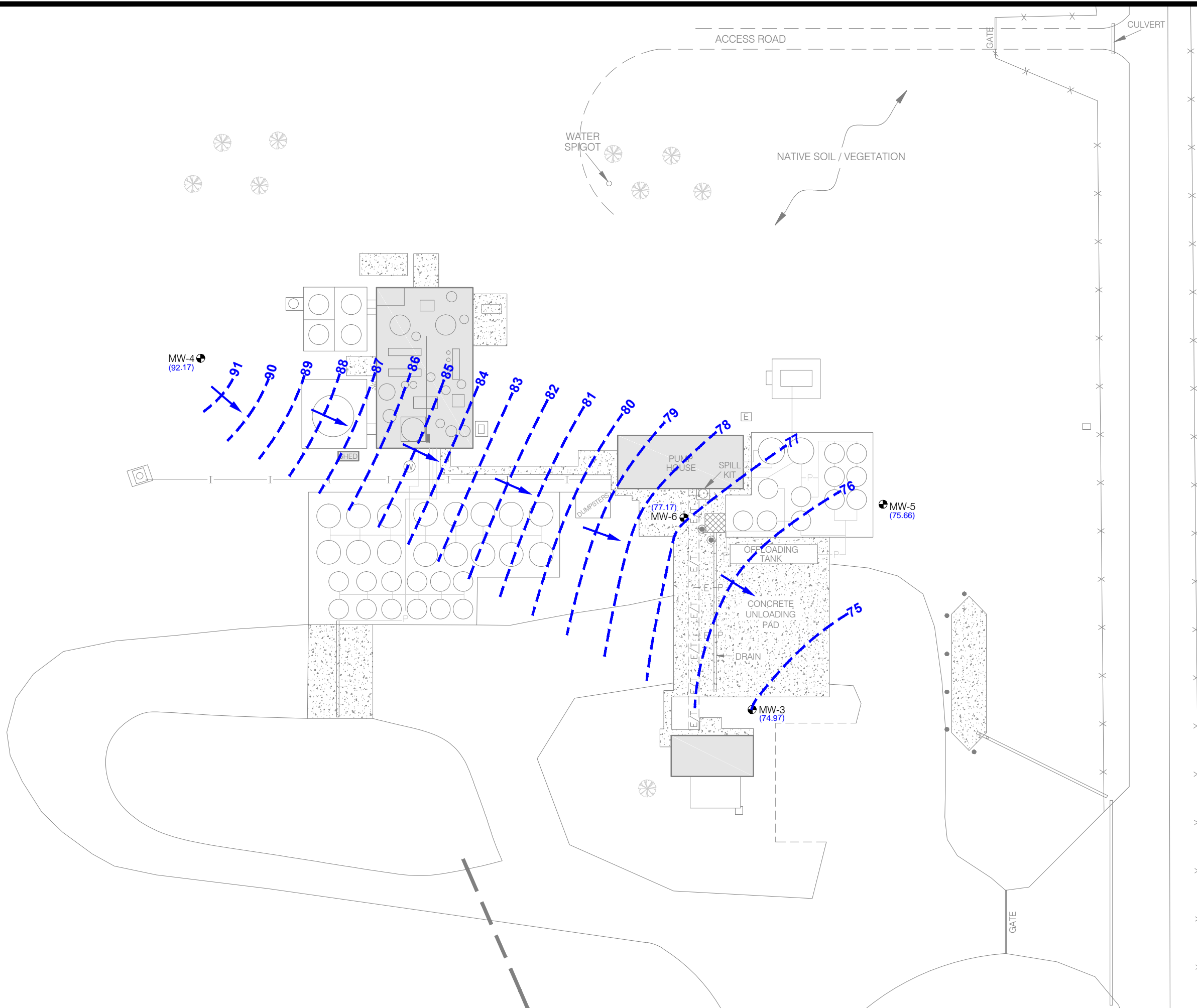


FIGURE 1
SITE MAP

NGL WATER SOLUTIONS C-6 FACILITY
13159 WCR 39
PLATTEVILLE, COLORADO

PROJECT: 1-8019-10695aa	DRAFT: MSB
DATE: 10/24/14	REVIEW:

CGRS ENVIRONMENTAL CONSTRUCTION COMPLIANCE



LEGEND

- MW-3 MONITORING WELL LOCATION
- INFERRED GROUNDWATER CONTOURS
- (74.23) GROUNDWATER ELEVATION (IN FEET)
- INFERRED FLOW DIRECTION

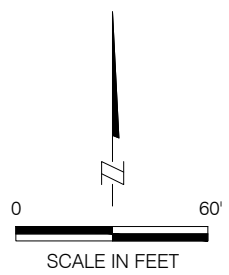
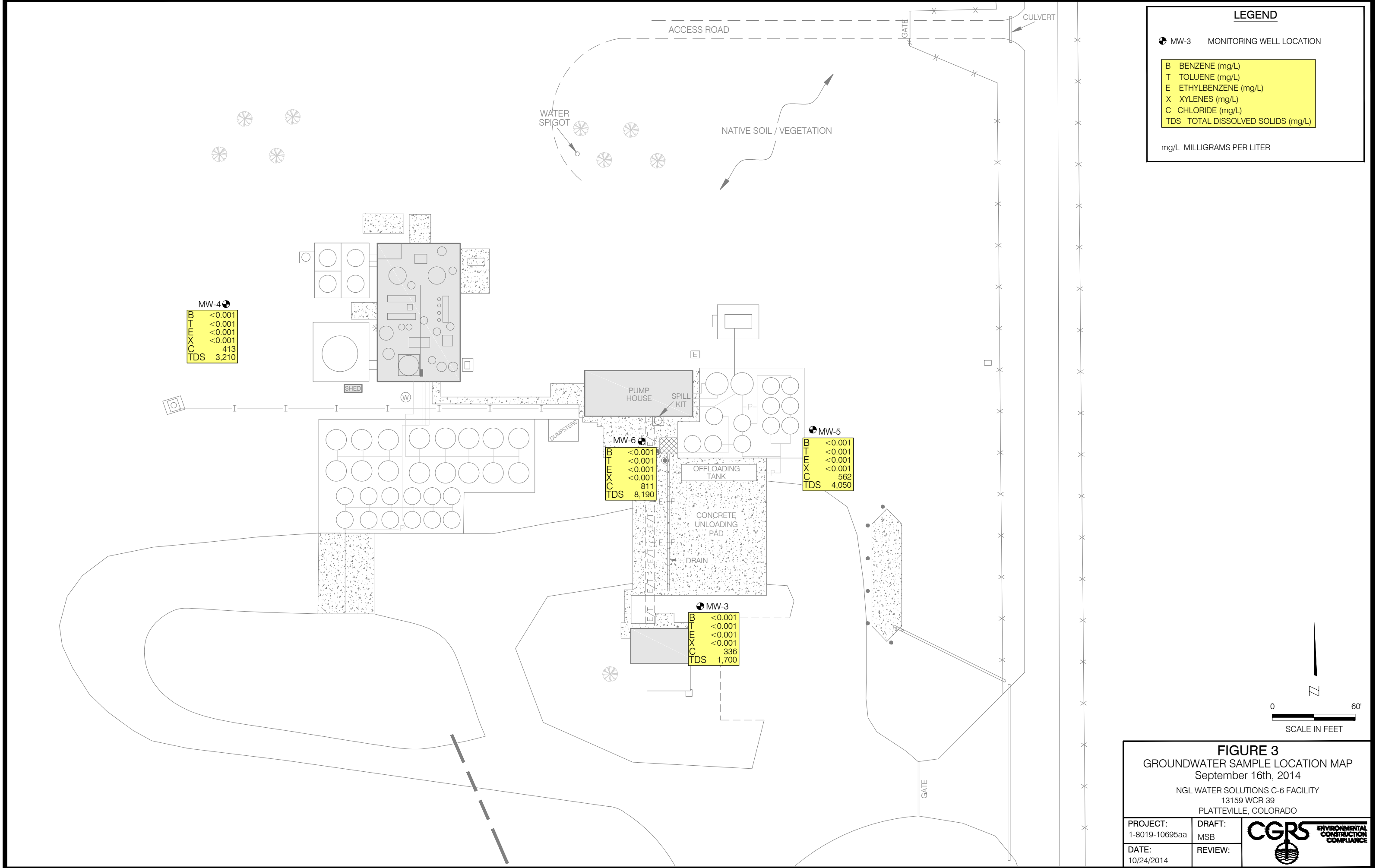


FIGURE 2
GROUNDWATER ELEVATION MAP
September 16th, 2014
NGL WATER SOLUTIONS C-6 FACILITY
13159 WCR 39
PLATTEVILLE, COLORADO

PROJECT: 1-8019-10695aa	DRAFT: MSB
DATE: 10/24/2014	REVIEW:

CGRS ENVIRONMENTAL
CONSTRUCTION
COMPLIANCE





TECHNOLOGY LABORATORY, INC.

CENTRE PROFESSIONAL PARK

1012 Centre Avenue
Fort Collins, Colorado 80526
(970) 490-1414

CERTIFICATE OF ANALYSIS

CGRS, INC.
1301 Academy Court
Fort Collins, CO 80524

Sample ID: MW-3
Laboratory ID B1873-01

Sampled: 09/16/14
Received: 09/17/14

Project No.: 1-8019-10695aa
Matrix: Water

<u>CAS Number</u>	<u>Parameter</u>	<u>Result</u>	<u>Units</u>	<u>MDL</u>	<u>Method</u>	<u>Date Analyzed</u>
71-43-2	Benzene	< 0.001	mg/L	0.001	EPA-8260B	09/19/14
108-88-3	Toluene	< 0.001	mg/L	0.001	EPA-8260B	09/19/14
100-41-4	Ethylbenzene	< 0.001	mg/L	0.001	EPA-8260B	09/19/14
1330-20-7	Total Xylenes	< 0.001	mg/L	0.001	EPA-8260B	09/19/14
16887-00-6	Chloride	336	mg/L	1	EPA-300.1	09/17/14
N/A	Total Dissolved Solids (TDS)	1700	mg/L	5	EPA-160.1	09/22/14

QA/QC SURROGATE RECOVERIES

<u>Compound</u>	<u>% Recovery</u>	<u>% Rec. Limits</u>
Dibromofluoromethane	80	68-120
Toluene-d8	91	81-128
Bromofluorobenzene	111	70-113

TECHNOLOGY LABORATORY, INC.

The results contained in this report
relate only to those items tested.



TECHNOLOGY LABORATORY, INC.

CENTRE PROFESSIONAL PARK

1012 Centre Avenue
Fort Collins, Colorado 80526
(970) 490-1414

CERTIFICATE OF ANALYSIS

CGRS, INC.
1301 Academy Court
Fort Collins, CO 80524

Sample ID: MW-4

Laboratory ID B1873-02

Sampled: 09/16/14

Received: 09/17/14

Project No.: 1-8019-10695aa

Matrix: Water

<u>CAS Number</u>	<u>Parameter</u>	<u>Result</u>	<u>Units</u>	<u>MDL</u>	<u>Method</u>	<u>Date Analyzed</u>
71-43-2	Benzene	< 0.001	mg/L	0.001	EPA-8260B	09/19/14
108-88-3	Toluene	< 0.001	mg/L	0.001	EPA-8260B	09/19/14
100-41-4	Ethylbenzene	< 0.001	mg/L	0.001	EPA-8260B	09/19/14
1330-20-7	Total Xylenes	< 0.001	mg/L	0.001	EPA-8260B	09/19/14
16887-00-6	Chloride	413	mg/L	1	EPA-300.1	09/17/14
N/A	Total Dissolved Solids (TDS)	3210	mg/L	5	EPA-160.1	09/22/14

QA/QC SURROGATE RECOVERIES

<u>Compound</u>	<u>% Recovery</u>	<u>% Rec. Limits</u>
Dibromofluoromethane	81	68-120
Toluene-d8	93	81-128
Bromofluorobenzene	107	70-113

TECHNOLOGY LABORATORY, INC.

The results contained in this report
relate only to those items tested.



TECHNOLOGY LABORATORY, INC.

CENTRE PROFESSIONAL PARK

1012 Centre Avenue
Fort Collins, Colorado 80526
(970) 490-1414

CERTIFICATE OF ANALYSIS

CGRS, INC.
1301 Academy Court
Fort Collins, CO 80524

Sample ID: MW-5

Laboratory ID B1873-03

Sampled: 09/16/14

Received: 09/17/14

Project No.: 1-8019-10695aa

Matrix: Water

<u>CAS Number</u>	<u>Parameter</u>	<u>Result</u>	<u>Units</u>	<u>MDL</u>	<u>Method</u>	<u>Date Analyzed</u>
71-43-2	Benzene	< 0.001	mg/L	0.001	EPA-8260B	09/20/14
108-88-3	Toluene	< 0.001	mg/L	0.001	EPA-8260B	09/20/14
100-41-4	Ethylbenzene	< 0.001	mg/L	0.001	EPA-8260B	09/20/14
1330-20-7	Total Xylenes	< 0.001	mg/L	0.001	EPA-8260B	09/20/14
16887-00-6	Chloride	562	mg/L	1	EPA-300.1	09/17/14
N/A	Total Dissolved Solids (TDS)	4050	mg/L	5	EPA-160.1	09/22/14

QA/QC SURROGATE RECOVERIES

<u>Compound</u>	<u>% Recovery</u>	<u>% Rec. Limits</u>
Dibromofluoromethane	80	68-120
Toluene-d8	91	81-128
Bromofluorobenzene	112	70-113

TECHNOLOGY LABORATORY, INC.

The results contained in this report
relate only to those items tested.



TECHNOLOGY LABORATORY, INC.

CENTRE PROFESSIONAL PARK

1012 Centre Avenue
Fort Collins, Colorado 80526
(970) 490-1414

CERTIFICATE OF ANALYSIS

CGRS, INC.
1301 Academy Court
Fort Collins, CO 80524

Sample ID: MW-6

Laboratory ID B1873-04

Sampled: 09/16/14

Received: 09/17/14

Project No.: 1-8019-10695aa

Matrix: Water

<u>CAS Number</u>	<u>Parameter</u>	<u>Result</u>	<u>Units</u>	<u>MDL</u>	<u>Method</u>	<u>Date Analyzed</u>
71-43-2	Benzene	< 0.001	mg/L	0.001	EPA-8260B	09/20/14
108-88-3	Toluene	< 0.001	mg/L	0.001	EPA-8260B	09/20/14
100-41-4	Ethylbenzene	< 0.001	mg/L	0.001	EPA-8260B	09/20/14
1330-20-7	Total Xylenes	< 0.001	mg/L	0.001	EPA-8260B	09/20/14
16887-00-6	Chloride	811	mg/L	1	EPA-300.1	09/17/14
N/A	Total Dissolved Solids (TDS)	8190	mg/L	5	EPA-160.1	09/22/14

QA/QC SURROGATE RECOVERIES

<u>Compound</u>	<u>% Recovery</u>	<u>% Rec. Limits</u>
Dibromofluoromethane	81	68-120
Toluene-d8	91	81-128
Bromofluorobenzene	106	70-113

TECHNOLOGY LABORATORY, INC.

The results contained in this report
relate only to those items tested.



TECHNOLOGY LABORATORY, INC.

CENTRE PROFESSIONAL PARK

1012 Centre Avenue
Fort Collins, Colorado 80526
(970) 490-1414

CERTIFICATE OF ANALYSIS

CGRS, INC.
1301 Academy Court
Fort Collins, CO 80524

Sample ID: Sub-Pad

Laboratory ID B1873-05

Sampled: 09/16/14

Received: 09/17/14

Project No.: 1-8019-10695aa

Matrix: Water

<u>CAS Number</u>	<u>Parameter</u>	<u>Result</u>	<u>Units</u>	<u>MDL</u>	<u>Method</u>	<u>Date Analyzed</u>
N/A	HEM	84.8	mg/L	1.4	EPA-1664A	09/24/14
71-43-2	Benzene	< 0.001	mg/L	0.001	EPA-8260B	09/19/14
108-88-3	Toluene	< 0.001	mg/L	0.001	EPA-8260B	09/19/14
100-41-4	Ethylbenzene	0.015	mg/L	0.001	EPA-8260B	09/19/14
1330-20-7	Total Xylenes	0.241	mg/L	0.001	EPA-8260B	09/19/14

QA/QC SURROGATE RECOVERIES

<u>Compound</u>	<u>% Recovery</u>	<u>% Rec. Limits</u>
Dibromofluoromethane	80	68-120
Toluene-d8	81	81-128
Bromofluorobenzene	90	70-113

TECHNOLOGY LABORATORY, INC.

The results contained in this report
relate only to those items tested.



TECHNOLOGY LABORATORY, INC.

1012 Centre Avenue
Fort Collins, Colorado 80526
(970) 490-1414

W.O. NUMBER: B1873

CHAIN-OF-CUSTODY REPORT

COMPANY NAME

CGRS, INC.

PROJECT MANAGER

Craig Mulica

PROJECT NUMBER

1-8019-10695aa

PROJECT LOCATION OR NAME

High Sierra Water, C-6 Platteville

SAMPLERS SIGNATURE

Lab # SampleID

B1873-01 MW-3

B1873-02 MW-4

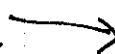
B1873-03 MW-5

B1873-04 MW-6

B1873-05 Sub-pac1

DATE/TIME
SAMPLED

9/16/14



SAMPLE MATRIX (S) (W) (Air) (Other)

Wa Wa Wa Wa

NUMBER OF CONTAINERS

3 3 3 3

~~BTEX~~ / MTBE / TVPH

X X X X

TEPH (DRO)

OIL and GREASE

VOC 624 / 8260 (TOTAL/TCLP)

SVOC 625 / 8270 / PAH (Total / TCLP)

pH / TSS ~~TDS~~

X X

RCRA 8 METALS (TOTAL / TCLP /
DISSOLVED)

React. / Ignite. / Corr. / Paint Filter

BTEX / TVPH Emissions Vapor

BTEX Soil Vapor

TO-14 / TO-15 / TVPH Vapor

NITRATE / NITRITE / AMMONIA

BOD / COD

PCBs

Ferrous Iron

Chloride

TRPH

X X X

HOLD AFTER ANALYSIS

HOLD, DON'T ANALYZE

OTHER

Page 1 of 1

TURNAROUND TIME

Normal (<=10 Working Days)

Next Day (2x normal rates)

3 day (1.5x normal rates)

NPDES PERMIT ? YES NO
COMMENTS

RELINQUISHED BY: KRC

COMPANY: CGRS

RELINQUISHED BY:

COMPANY:

LOGGED IN BY: W

DATE: 9/17/14

TIME: 0820

DATE:

TIME:

Sample / Preservativ ☒ <= 6° Acid ☐ None ☐ Other Filtered

RECEIVED BY: GW

COMPANY: TLI

RECEIVED BY:

COMPANY:

9/17/14 8:24am

ATTACHMENT D

C7 – Briggsdale: Facility Tables, Figures and Analytical Data

TABLE 4

GROUNDWATER ELEVATION AND ANALYTICAL DATA
NGL Water Solutions C-7 Facility
33857 WCR 74
Briggsdale, Colorado

CGRS Project: 1-8019-12439aa

Sample ID	Date	Surveyed Elevation (ft)	Depth To Water (ft)	Groundwater Elevation (ft)	Benzene (mg/L)	Toluene (mg/L)	Ethyl-Benzene (mg/L)	Xylenes (mg/L)	Chlorides (mg/L)	TDS (mg/L)
TH-3	03/18/10 02/11/11	NS	20.82 <i>Destroyed</i>	NS	< 0.001	< 0.001	< 0.001	0.002	NA	NA
TH-4	03/18/10 02/11/11	NS	21.72 <i>Destroyed</i>	NS	< 0.001	< 0.001	< 0.001	< 0.001	NA	NA
TH-5	03/18/10	NS	22.55	NS	< 0.001	< 0.001	< 0.001	< 0.001	NA	NA
	02/11/11	99.57	16.89	82.68	< 0.001	< 0.001	< 0.001	< 0.001	24.5	1,010
	06/09/11	99.57	17.07	82.50	< 0.001	< 0.001	< 0.001	< 0.001	21.7	1,080
	09/14/11	99.57	17.18	82.39	< 0.001	< 0.001	< 0.001	< 0.001	14.7	1,150
	12/08/11	99.57	17.53	82.04	<i>Removed From Sampling Program</i>					
	03/13/12	99.57	17.69	81.88						
	06/11/12	99.57	17.84	81.73						
	09/11/12	99.57	18.19	81.38						
	12/06/12	99.57	18.54	81.03						
	03/13/13	99.57	18.57	81.00						
	09/11/13	99.57	18.85	80.72						
	03/13/14	99.57	19.02	80.55						
	09/16/14	99.57	15.83	83.74						
MW-1	02/11/11	100.00	18.98	81.02	< 0.001	< 0.001	< 0.001	< 0.001	50.0	1,130
	06/09/11	100.00	18.97	81.03	< 0.001	< 0.001	< 0.001	< 0.001	38.7	1,050
	09/14/11	100.00	19.03	80.97	< 0.001	< 0.001	< 0.001	< 0.001	20.2	970
	12/08/11	100.00	19.22	80.78	< 0.001	< 0.001	< 0.001	< 0.001	39.3	1,120
	03/13/12	100.00	19.41	80.59	< 0.001	< 0.001	< 0.001	< 0.001	39.7	1,160
	06/11/12	100.00	19.51	80.49	< 0.001	< 0.001	< 0.001	< 0.001	34.3	1,170
	09/11/12	100.00	19.60	80.40	< 0.001	< 0.001	< 0.001	< 0.001	29.2	1,270
	12/06/12	100.00	19.63	80.37	< 0.001	< 0.001	< 0.001	< 0.001	32.4	1,250
	03/13/13	100.00	19.98	80.02	< 0.001	< 0.001	< 0.001	< 0.001	46.4	1,270
	09/11/13	100.00	20.09	79.91	< 0.001	< 0.001	< 0.001	< 0.001	47.4	1,330
	03/13/14	100.00	20.40	79.60	< 0.001	< 0.001	< 0.001	< 0.001	39.2	1,290
	09/16/14	100.00	19.02	80.98	< 0.001	< 0.001	< 0.001	< 0.001	39.5	1,110
MW-2	02/11/11	97.27	16.00	81.27	< 0.001	< 0.001	< 0.001	< 0.001	50.5	1,070
	06/09/11	97.27	17.64	79.63	< 0.001	< 0.001	< 0.001	< 0.001	40.7	1,080
	09/14/11	97.27	17.71	79.56	< 0.001	< 0.001	< 0.001	< 0.001	26.1	940
	12/08/11	97.27	17.91	79.36	< 0.001	< 0.001	< 0.001	< 0.001	42.9	980
	03/13/12	97.27	18.10	79.17	< 0.001	< 0.001	< 0.001	< 0.001	39.8	890
	06/11/12	97.27	18.20	79.07	< 0.001	< 0.001	< 0.001	< 0.001	37.4	1,020
	09/11/12	97.27	18.30	78.97	< 0.001	< 0.001	< 0.001	< 0.001	27.9	960
	12/06/12	98.91	18.54	80.37	< 0.001	< 0.001	< 0.001	< 0.001	30.0	910
	03/13/13	98.91	18.69	80.22	< 0.001	< 0.001	< 0.001	< 0.001	47.2	920
	09/11/13	98.91	18.82	80.09	< 0.001	< 0.001	< 0.001	< 0.001	26.2	900
	03/13/14	98.91	19.11	79.80	< 0.001	< 0.001	< 0.001	< 0.001	35.3	790
	09/16/14	98.91	17.79	81.12	< 0.001	< 0.001	< 0.001	< 0.001	53.0	980
MW-3	02/11/11	98.17	16.72	81.45	< 0.001	< 0.001	< 0.001	0.001	35.6	600
	06/09/11	98.17	18.04	80.13	< 0.001	< 0.001	< 0.001	< 0.001	24.0	590
	09/14/11	98.17	18.12	80.05	< 0.001	< 0.001	< 0.001	< 0.001	19.5	570
	12/08/11	98.17	18.34	79.83	<i>Removed From Sampling Program</i>					
	03/13/12	98.17	18.53	79.64						
	06/11/12	98.17	18.63	79.54						
	09/11/12	98.17	18.75	79.42						
	12/06/12	99.48	19.37	80.11						
	03/13/13	99.48	19.16	80.32						
	09/11/13	99.48	19.26	80.22						
	03/13/14	99.48	19.56	79.92						
	09/16/14	99.48	18.05	81.43						

TABLE 4

GROUNDWATER ELEVATION AND ANALYTICAL DATA
NGL Water Solutions C-7 Facility
33857 WCR 74
Briggsdale, Colorado

CGRS Project: 1-8019-12439aa

Sample ID	Date	Surveyed Elevation (ft)	Depth To Water (ft)	Groundwater Elevation (ft)	Benzene (mg/L)	Toluene (mg/L)	Ethyl-Benzene (mg/L)	Xylenes (mg/L)	Chlorides (mg/L)	TDS (mg/L)
MW-4	02/11/11	100.56	18.80	81.76	< 0.001	< 0.001	< 0.001	0.002	49.1	1,300
	06/09/11	100.56	18.90	81.66	< 0.001	< 0.001	< 0.001	< 0.001	28.8	1,280
	09/14/11	100.56	19.03	81.53	< 0.001	< 0.001	< 0.001	< 0.001	17.7	1,290
	12/08/11	100.56	19.32	81.24	< 0.001	< 0.001	< 0.001	< 0.001	28.4	1,290
	03/13/12	100.56	18.53	82.03	< 0.001	< 0.001	< 0.001	< 0.001	27.1	1,240
	06/11/12	100.56	19.65	80.91	< 0.001	< 0.001	< 0.001	< 0.001	25.0	1,260
	09/11/12	100.56	19.30	81.26	< 0.001	< 0.001	< 0.001	< 0.001	11.5	1,085
	12/06/12	100.56	20.17	80.39	< 0.001	< 0.001	< 0.001	< 0.001	17.9	1,220
	03/13/13	100.56	20.30	80.26	< 0.001	< 0.001	< 0.001	< 0.001	26.8	1,250
	09/11/13	100.56	20.48	80.08	< 0.001	< 0.001	< 0.001	< 0.001	18.7	1,070
	03/13/14	100.56	20.72	79.84	< 0.001	< 0.001	< 0.001	< 0.001	20.3	1,180
	09/16/14	100.56	18.03	82.53	< 0.001	< 0.001	< 0.001	< 0.001	38.0	1,450
MW-6	12/07/11	97.59	16.94	80.65	< 0.001	< 0.001	< 0.001	< 0.001	55.9	660
	03/13/12	97.59	17.10	80.49	< 0.001	< 0.001	< 0.001	< 0.001	59.5	840
	06/11/12	97.59	17.20	80.39	< 0.001	< 0.001	< 0.001	< 0.001	47.8	840
	09/11/12	97.59	17.26	80.33	< 0.001	< 0.001	< 0.001	< 0.001	39.9	865
	12/06/12	97.61	17.48	80.13	< 0.001	< 0.001	< 0.001	< 0.001	48.4	870
	03/13/13	97.61	17.64	79.97	< 0.001	< 0.001	< 0.001	< 0.001	70.8	890
	09/11/13	97.61	17.74	79.87	< 0.001	< 0.001	< 0.001	< 0.001	64.3	900
	03/13/14	97.61	18.03	79.58	< 0.001	< 0.001	< 0.001	< 0.001	53.5	880
	09/16/14	97.61	16.89	80.72	< 0.001	< 0.001	< 0.001	< 0.001	60.5	930
COGCC Allowable Concentration for sensitive area		-	-	-	0.005	1.0	0.7	1.4	-	-
MDL		-	-	-	0.001	0.001	0.001	0.001	-	-

Notes:

Depth to groundwater is measured from the top of the monitoring well casing.

Values in **bold face** exceed COGCC allowable concentrations

NS = Not Surveyed

NA = Not Analyzed

TVPH = Total Volatile Petroleum Hydrocarbons

TEPH = Total Extractable Petroleum Hydrocarbons

TDS = Total Dissolved Solids

MDL = Method Detection Limit

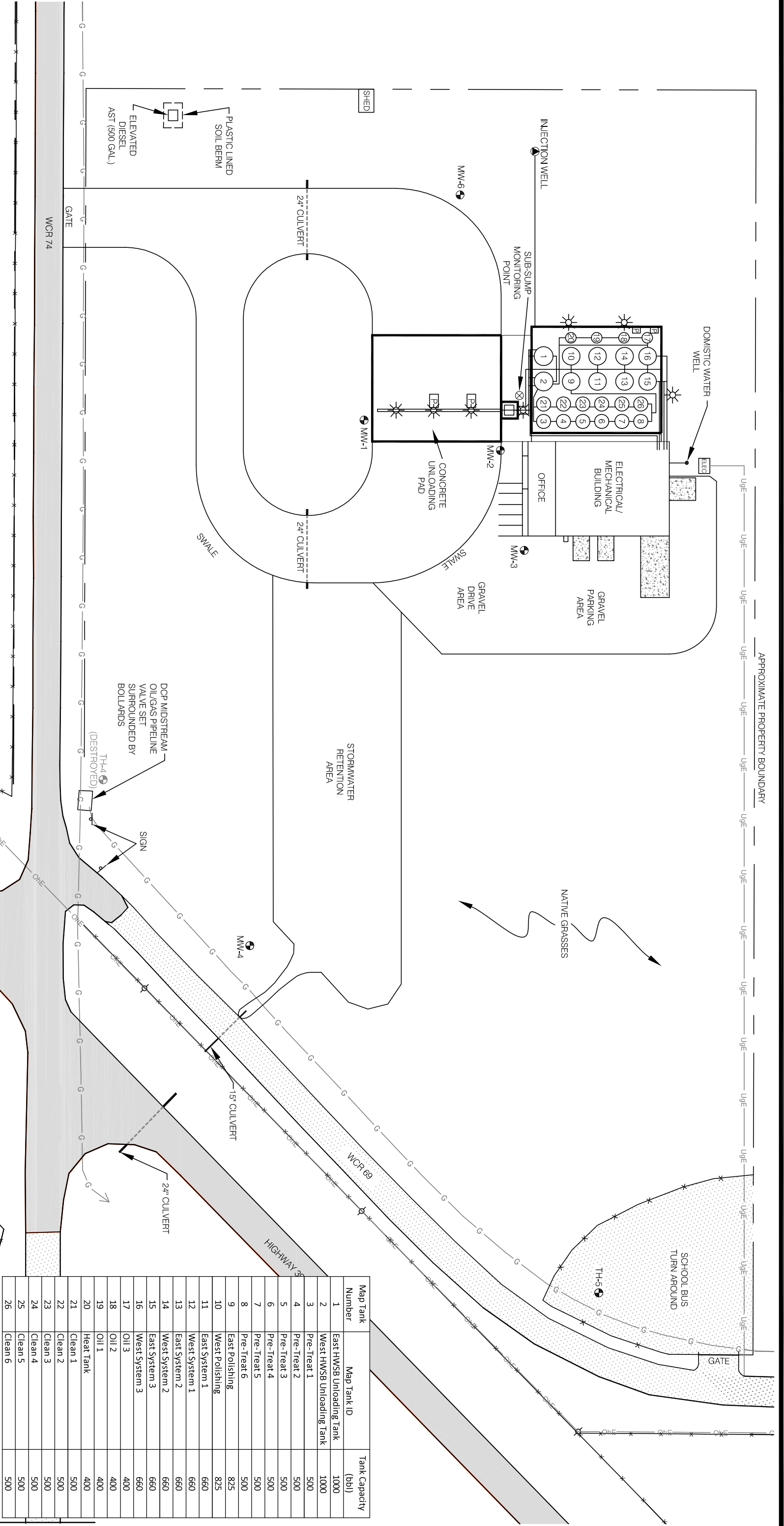


FIGURE 1
SITE CONDITIONS MAP


NGL Water Solutions - C7 Facility
33857 WCR 74
BRIGGS DALE, COLORADO

PROJECT:
1-8019-12439aa

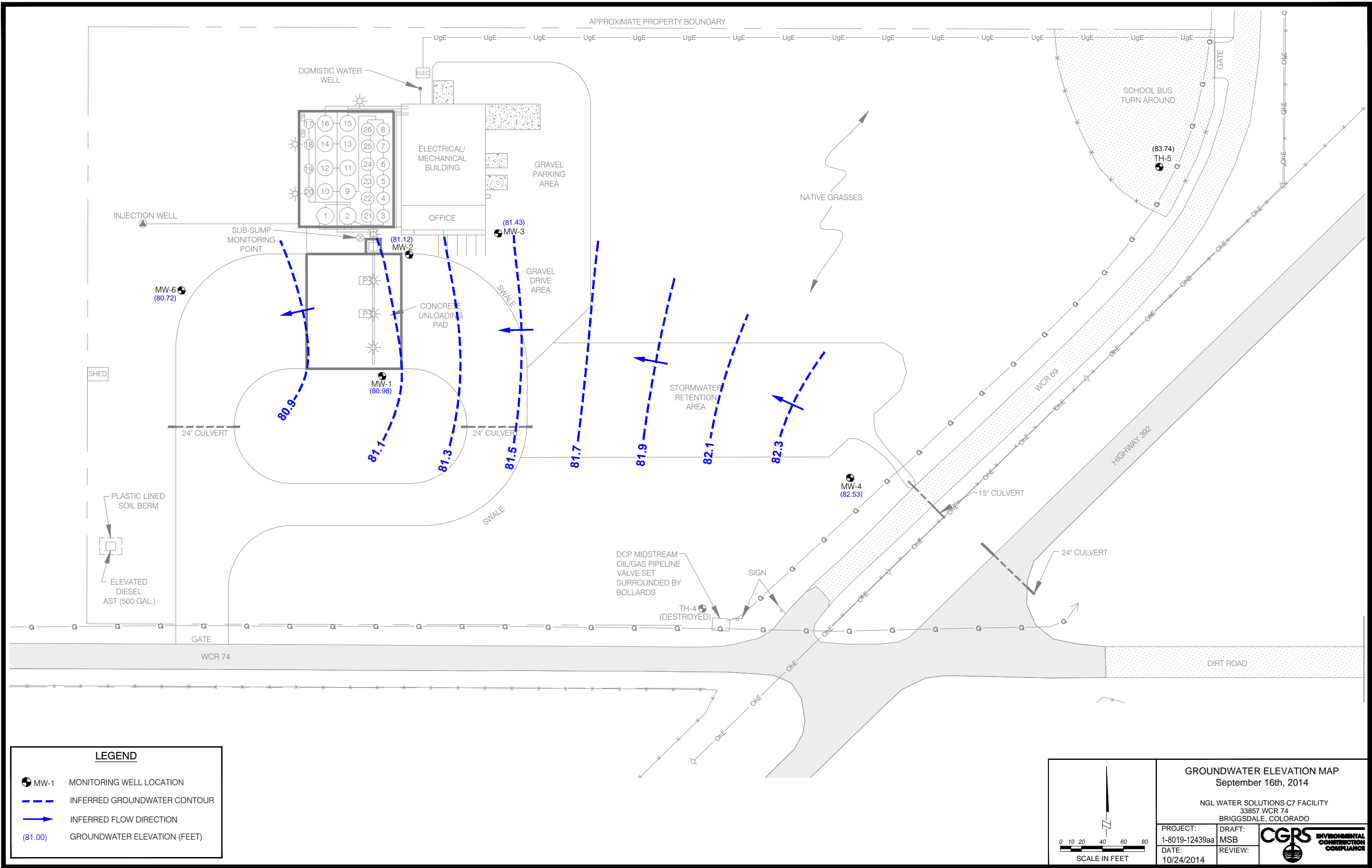
DRAFT:
CLB

DATE:
12/29/11

REVIEW:



ENVIRONMENTAL
CONSTRUCTION
COMPLIANCE



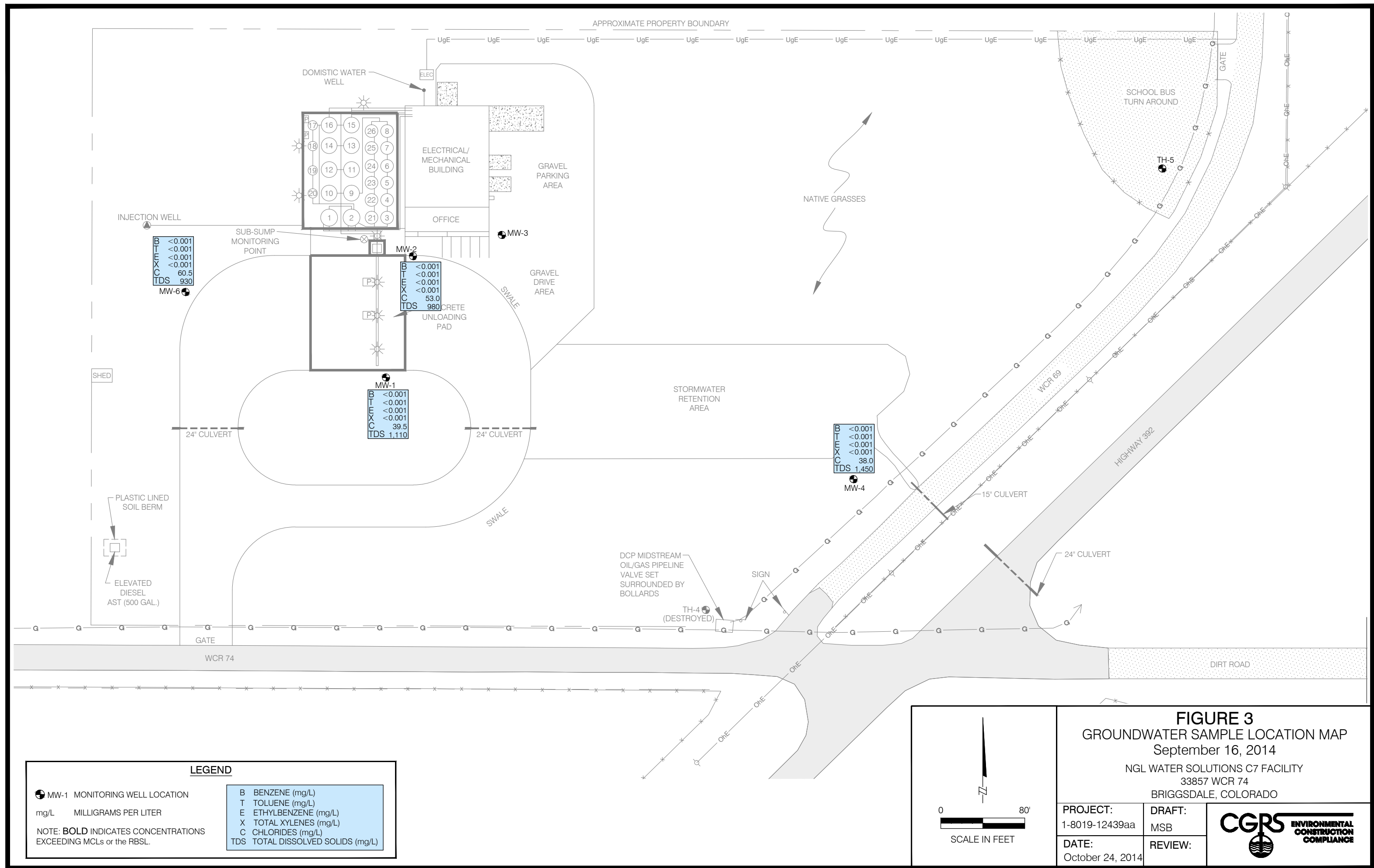


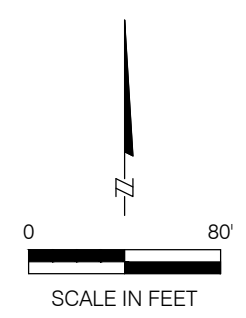
FIGURE 3
GROUNDWATER SAMPLE LOCATION MAP
September 16, 2014
NGL WATER SOLUTIONS C7 FACILITY
33857 WCR 74
BRIGGS DALE, COLORADO

PROJECT:
1-8019-12439aa

DATE:
October 24, 2014

DRAFT:
MSB

REVIEW:





TECHNOLOGY LABORATORY, INC.

CENTRE PROFESSIONAL PARK

1012 Centre Avenue
Fort Collins, Colorado 80526
(970) 490-1414

CERTIFICATE OF ANALYSIS

CGRS, INC.
1301 Academy Court
Fort Collins, CO 80524

Sample ID: MW-1

Laboratory ID B1874-01

Sampled: 09/16/14

Received: 09/17/14

Project No.: 1-8019-12439aa

Matrix: Water

<u>CAS Number</u>	<u>Parameter</u>	<u>Result</u>	<u>Units</u>	<u>MDL</u>	<u>Method</u>	<u>Date Analyzed</u>
71-43-2	Benzene	< 0.001	mg/L	0.001	EPA-8260B	09/20/14
108-88-3	Toluene	< 0.001	mg/L	0.001	EPA-8260B	09/20/14
100-41-4	Ethylbenzene	< 0.001	mg/L	0.001	EPA-8260B	09/20/14
1330-20-7	Total Xylenes	< 0.001	mg/L	0.001	EPA-8260B	09/20/14
16887-00-6	Chloride	39.5	mg/L	1	EPA-300.1	09/17/14
N/A	Total Dissolved Solids (TDS)	1110	mg/L	5	SM-2540 C	09/22/14

QA/QC SURROGATE RECOVERIES

<u>Compound</u>	<u>% Recovery</u>	<u>% Rec. Limits</u>
Dibromofluoromethane	80	68-120
Toluene-d8	82	81-128
Bromofluorobenzene	91	70-113

TECHNOLOGY LABORATORY, INC.

The results contained in this report
relate only to those items tested.



TECHNOLOGY LABORATORY, INC.

CENTRE PROFESSIONAL PARK

1012 Centre Avenue
Fort Collins, Colorado 80526
(970) 490-1414

CERTIFICATE OF ANALYSIS

CGRS, INC.
1301 Academy Court
Fort Collins, CO 80524

Sample ID: MW-2

Laboratory ID B1874-02

Sampled: 09/16/14

Received: 09/17/14

Project No.: 1-8019-12439aa

Matrix: Water

<u>CAS Number</u>	<u>Parameter</u>	<u>Result</u>	<u>Units</u>	<u>MDL</u>	<u>Method</u>	<u>Date Analyzed</u>
71-43-2	Benzene	< 0.001	mg/L	0.001	EPA-8260B	09/20/14
108-88-3	Toluene	< 0.001	mg/L	0.001	EPA-8260B	09/20/14
100-41-4	Ethylbenzene	< 0.001	mg/L	0.001	EPA-8260B	09/20/14
1330-20-7	Total Xylenes	< 0.001	mg/L	0.001	EPA-8260B	09/20/14
16887-00-6	Chloride	53.0	mg/L	1	EPA-300.1	09/17/14
N/A	Total Dissolved Solids (TDS)	980	mg/L	5	SM-2540 C	09/22/14

QA/QC SURROGATE RECOVERIES

<u>Compound</u>	<u>% Recovery</u>	<u>% Rec. Limits</u>
Dibromofluoromethane	81	68-120
Toluene-d8	81	81-128
Bromofluorobenzene	89	70-113

TECHNOLOGY LABORATORY, INC.

The results contained in this report
relate only to those items tested.



TECHNOLOGY LABORATORY, INC.

CENTRE PROFESSIONAL PARK

1012 Centre Avenue
Fort Collins, Colorado 80526
(970) 490-1414

CERTIFICATE OF ANALYSIS

CGRS, INC.
1301 Academy Court
Fort Collins, CO 80524

Sample ID: MW-4

Laboratory ID B1874-03

Sampled: 09/16/14

Received: 09/17/14

Project No.: 1-8019-12439aa

Matrix: Water

<u>CAS Number</u>	<u>Parameter</u>	<u>Result</u>	<u>Units</u>	<u>MDL</u>	<u>Method</u>	<u>Date Analyzed</u>
71-43-2	Benzene	< 0.001	mg/L	0.001	EPA-8260B	09/20/14
108-88-3	Toluene	< 0.001	mg/L	0.001	EPA-8260B	09/20/14
100-41-4	Ethylbenzene	< 0.001	mg/L	0.001	EPA-8260B	09/20/14
1330-20-7	Total Xylenes	< 0.001	mg/L	0.001	EPA-8260B	09/20/14
16887-00-6	Chloride	38.0	mg/L	1	EPA-300.1	09/17/14
N/A	Total Dissolved Solids (TDS)	1450	mg/L	5	SM-2540 C	09/22/14

QA/QC SURROGATE RECOVERIES

<u>Compound</u>	<u>% Recovery</u>	<u>% Rec. Limits</u>
Dibromofluoromethane	81	68-120
Toluene-d8	90	81-128
Bromofluorobenzene	112	70-113

TECHNOLOGY LABORATORY, INC.

The results contained in this report
relate only to those items tested.



TECHNOLOGY LABORATORY, INC.

CENTRE PROFESSIONAL PARK

1012 Centre Avenue
Fort Collins, Colorado 80526
(970) 490-1414

CERTIFICATE OF ANALYSIS

CGRS, INC.
1301 Academy Court
Fort Collins, CO 80524

Sample ID: MW-6

Laboratory ID B1874-04

Sampled: 09/16/14

Received: 09/17/14

Project No.: 1-8019-12439aa

Matrix: Water

<u>CAS Number</u>	<u>Parameter</u>	<u>Result</u>	<u>Units</u>	<u>MDL</u>	<u>Method</u>	<u>Date Analyzed</u>
71-43-2	Benzene	< 0.001	mg/L	0.001	EPA-8260B	09/20/14
108-88-3	Toluene	< 0.001	mg/L	0.001	EPA-8260B	09/20/14
100-41-4	Ethylbenzene	< 0.001	mg/L	0.001	EPA-8260B	09/20/14
1330-20-7	Total Xylenes	< 0.001	mg/L	0.001	EPA-8260B	09/20/14
16887-00-6	Chloride	60.5	mg/L	1	EPA-300.1	09/17/14
N/A	Total Dissolved Solids (TDS)	930	mg/L	5	SM-2540 C	09/22/14

QA/QC SURROGATE RECOVERIES

<u>Compound</u>	<u>% Recovery</u>	<u>% Rec. Limits</u>
Dibromofluoromethane	80	68-120
Toluene-d8	86	81-128
Bromofluorobenzene	89	70-113

TECHNOLOGY LABORATORY, INC.

The results contained in this report
relate only to those items tested.



TECHNOLOGY LABORATORY, INC.

1012 Centre Avenue
Fort Collins, Colorado 80526
(970) 490-1414

W.O. NUMBER: B1874

CHAIN-OF-CUSTODY REPORT

COMPANY NAME	ANALYSIS REQUESTED	OTHER
CGRS, INC.		
PROJECT MANAGER		
Craig Mulica		
PROJECT NUMBER		
1-8019-12439aa		
PROJECT LOCATION OR NAME		
High Sierra Water, C7 Briggsdale		
SAMPLERS SIGNATURE		
Lab #:		
B1874-01 MW-1		
B1874-02 MW-2		
B1874-03 MW-4		
B1874-04 MW-6		
DATE/TIME SAMPLED		
9/16/14		
SampleID		
Wa		
Wa		
Wa		
Wa		
NUMBER OF CONTAINERS		
3		
3		
3		
3		
SAMPLE MATRIX (S) (W) (Air) (Other)		
Wa		
Wa		
Wa		
Wa		
BTEX / MTBE / TVPH		
OIL and GREASE		
VOC 624 / 8260 (TOTAL/TCLP)		
SVOC 625 / 8270 / PAH (Total / TCLP)		
pH / TSS / TDS		
RCRA 8 METALS (TOTAL / TCLP / DISSOLVED)		
React. / Ignite. / Corr. / Paint Filter		
BTEX / TVPH Emissions Vapor		
BTEX Soil Vapor		
TO-14 / TO-15 / TVPH Vapor		
NITRATE / NITRITE / AMMONIA		
BOD / COD		
PCBs		
Ferrous Iron		
Chloride		
HOLD AFTER ANALYSIS		
HOLD, DON'T ANALYZE		

Page 1 of 1	TURNAROUND TIME	NPDES PERMIT ? YES NO	LOGGED IN BY:	Sample / Preservativ	None	Other
Normal (<=10 Working Days)	7	COMMENTS	DATE: 9/17/14	RECEIVED BY: J. T. L. I.	Filtered	9/17/14
Next Day (2x normal rates)		RELINQUISHED BY: CGRS	TIME: 0820	COMPANY:	Acid	8:22am
3 day (1.5x normal rates)		RELINQUISHED BY:	DATE:	RECEIVED BY:		
		COMPANY:	TIME:	COMPANY:		