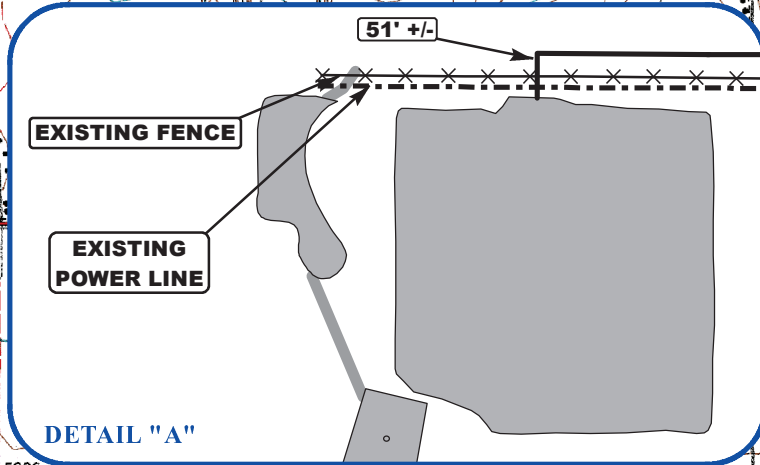
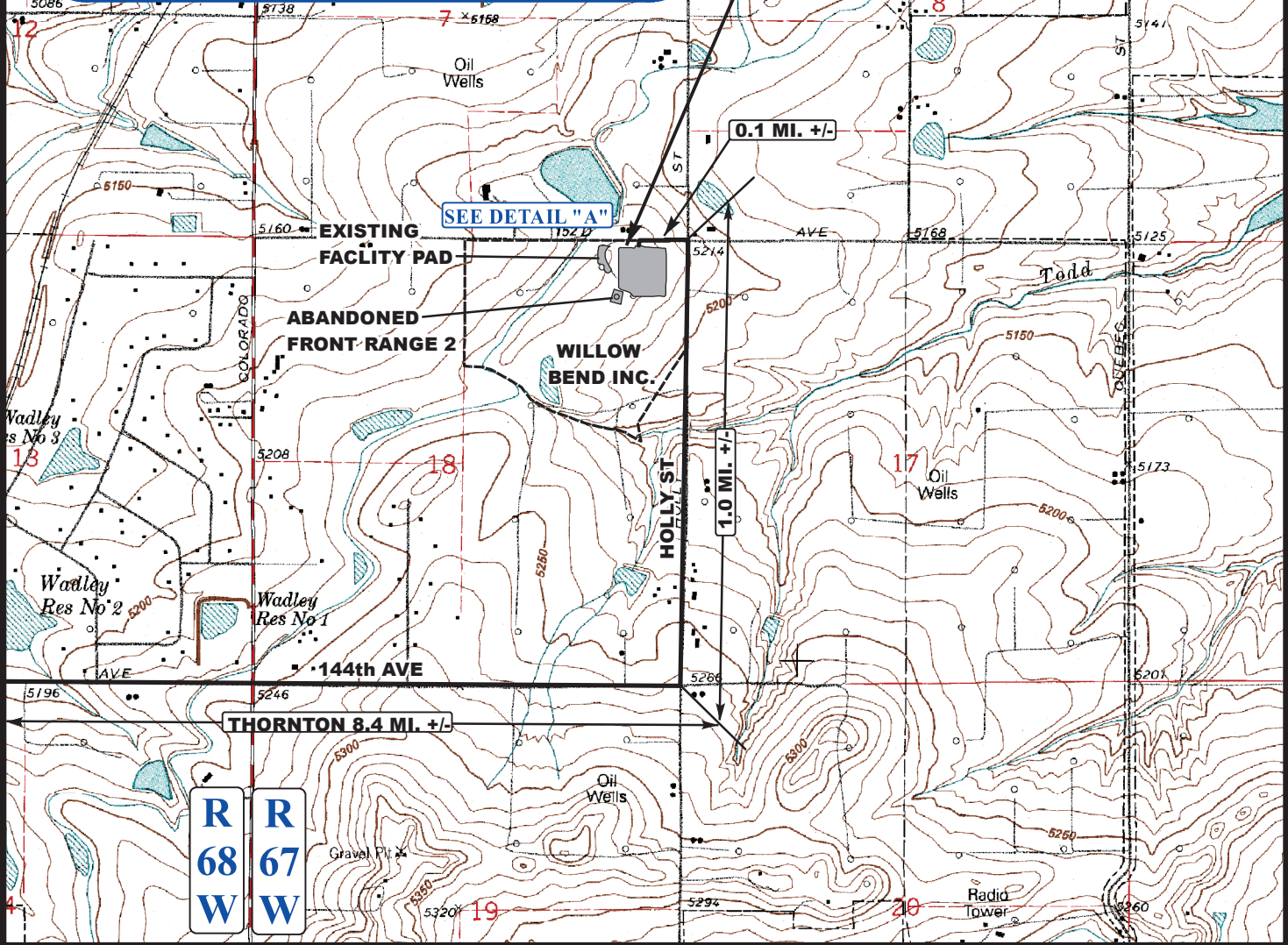


T1S



**PROPOSED LOCATION:
WILLOW BEND LD 18-23HC,
23HN, 366HC, 37HN, 361HC
& 361HN ON EXISTING WILLOW
BEND LD 18-22HC & 22HN PAD**



LEGEND:

- EXISTING ROADS
- PROPOSED ACCESS ROAD
- EXISTING POWER LINE
- EXISTING FENCE

GREAT WESTERN OIL & GAS COMPANY

**WILLOW BEND LD 18-23HC, 23HN, 366HC, 37HN,
361HC & 361HN ON EXISTING
WILLOW BEND LD 18-22HC & 22HN PAD
SECTION 18, T1S, R67W, 6th P.M.
NE 1/4 NE 1/4**



Utah Engineering & Land Surveying
85 South 200 East Vernal, Utah 84078
(435) 789-1017 * FAX (435) 789-1813

**ACCESS ROAD
MAP**

11 15 13
MONTH DAY YEAR



SCALE: 1"=2000' DRAWN BY: J.C. REV: 10-27-14 J.L.G.