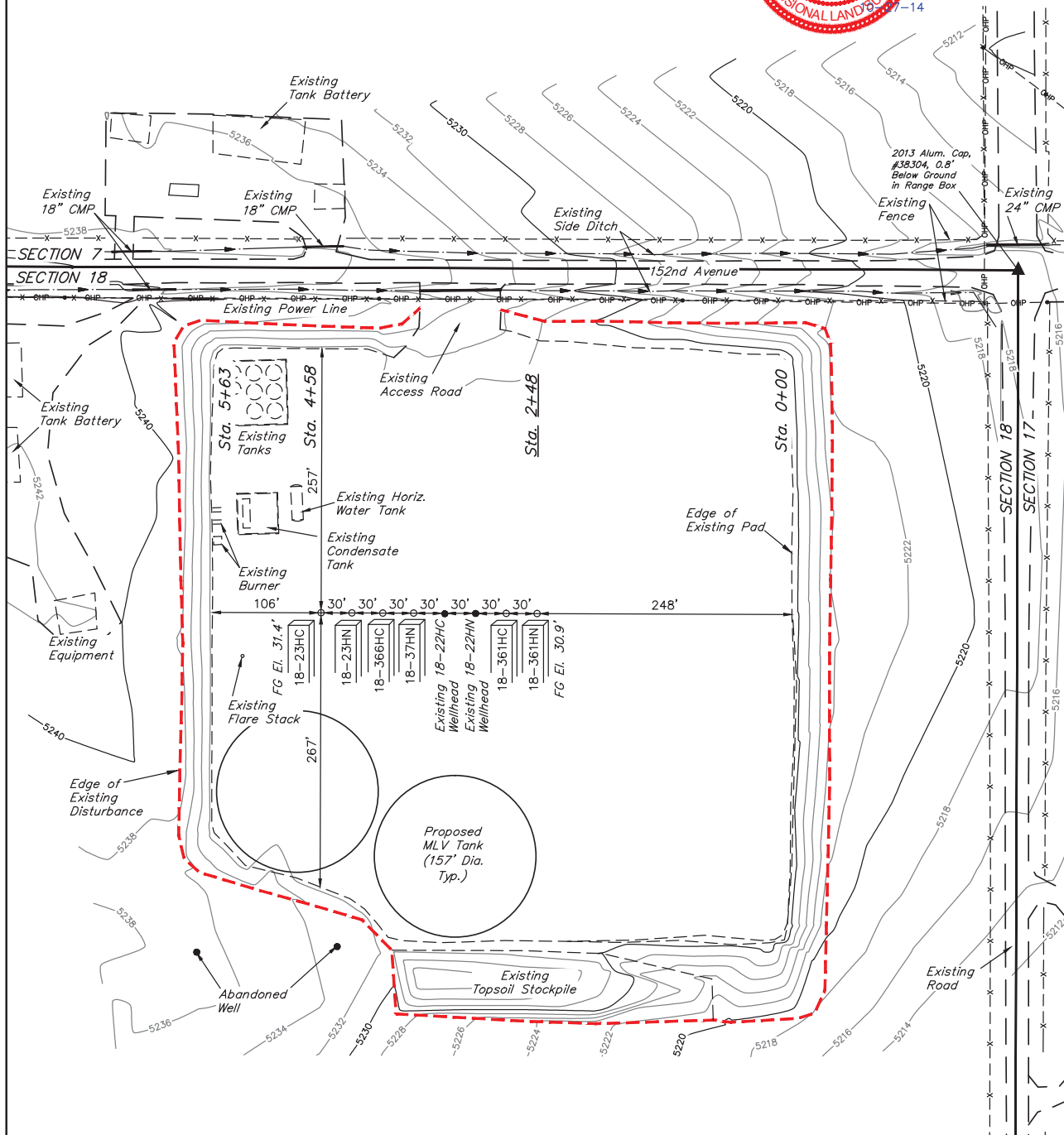


GREAT WESTERN OIL & GAS COMPANY  
CONSTRUCTION LAYOUT FOR  
WILLOW BEND LD 18-23HC, 23HN, 366HC, 37HN,  
361HC & 361HN ON EXISTING  
WILLOW BEND LD 18-22HC & 22HN PAD  
SECTION 18, T1S, R67W, 6th P.M.  
NE 1/4 NE 1/4

FIGURE #1

SCALE: 1" = 100'  
DATE: 11-25-13  
DRAWN BY: J.W.  
REVISED: 12-11-13  
REVISED: 05-14-14  
REVISED: 06-11-14  
REV: 10-24-14 J.W.



FINISHED GRADE ELEV. AT 18-23HC LOC. STAKE = 5231.4'

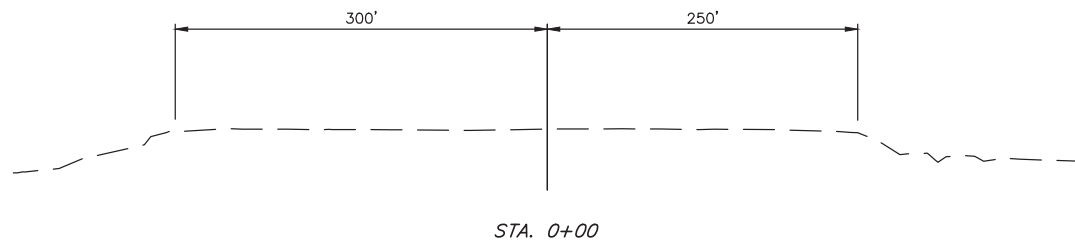
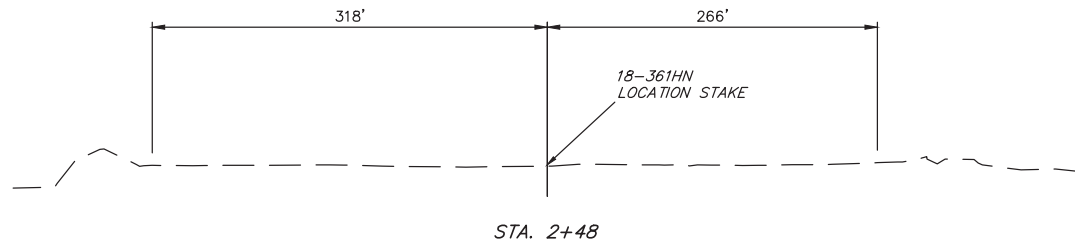
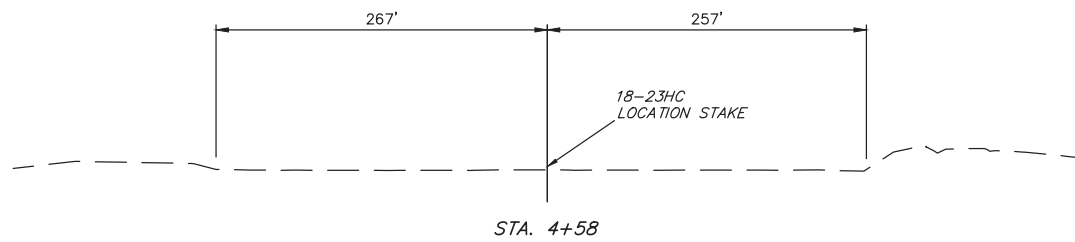
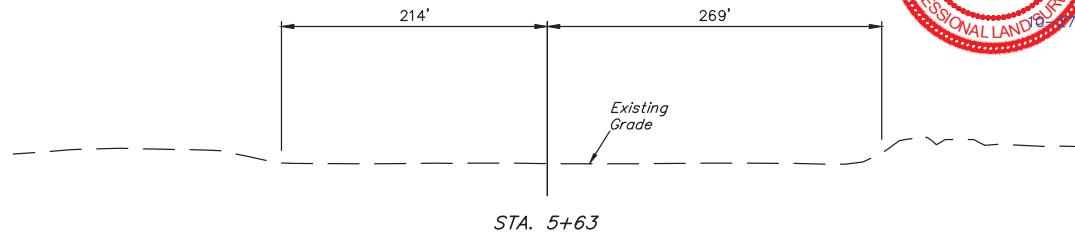
UINTAH ENGINEERING & LAND SURVEYING  
85 So. 200 East • Vernal, Utah 84078 • (435) 789-1017

1" = 40'  
X-Section  
Scale  
1" = 100'

DATE: 11-25-13  
DRAWN BY: J.W.  
REVISED: 12-11-13  
REVISED: 06-11-14  
REV: 10-24-14 J.W.

GREAT WESTERN OIL & GAS COMPANY  
CONSTRUCTION LAYOUT CROSS SECTIONS FOR  
WILLOW BEND LD 18-23HC, 23HN, 366HC, 37HN,  
361HC & 361HN ON EXISTING  
WILLOW BEND LD 18-22HC & 22HN PAD  
SECTION 18, T1S, R67W, 6th P.M.  
NE 1/4 NE 1/4

FIGURE #2



APPROXIMATE ACREAGE  
EXISTING WELL SITE DISTURBANCE =  $\pm$  9.289 ACRES