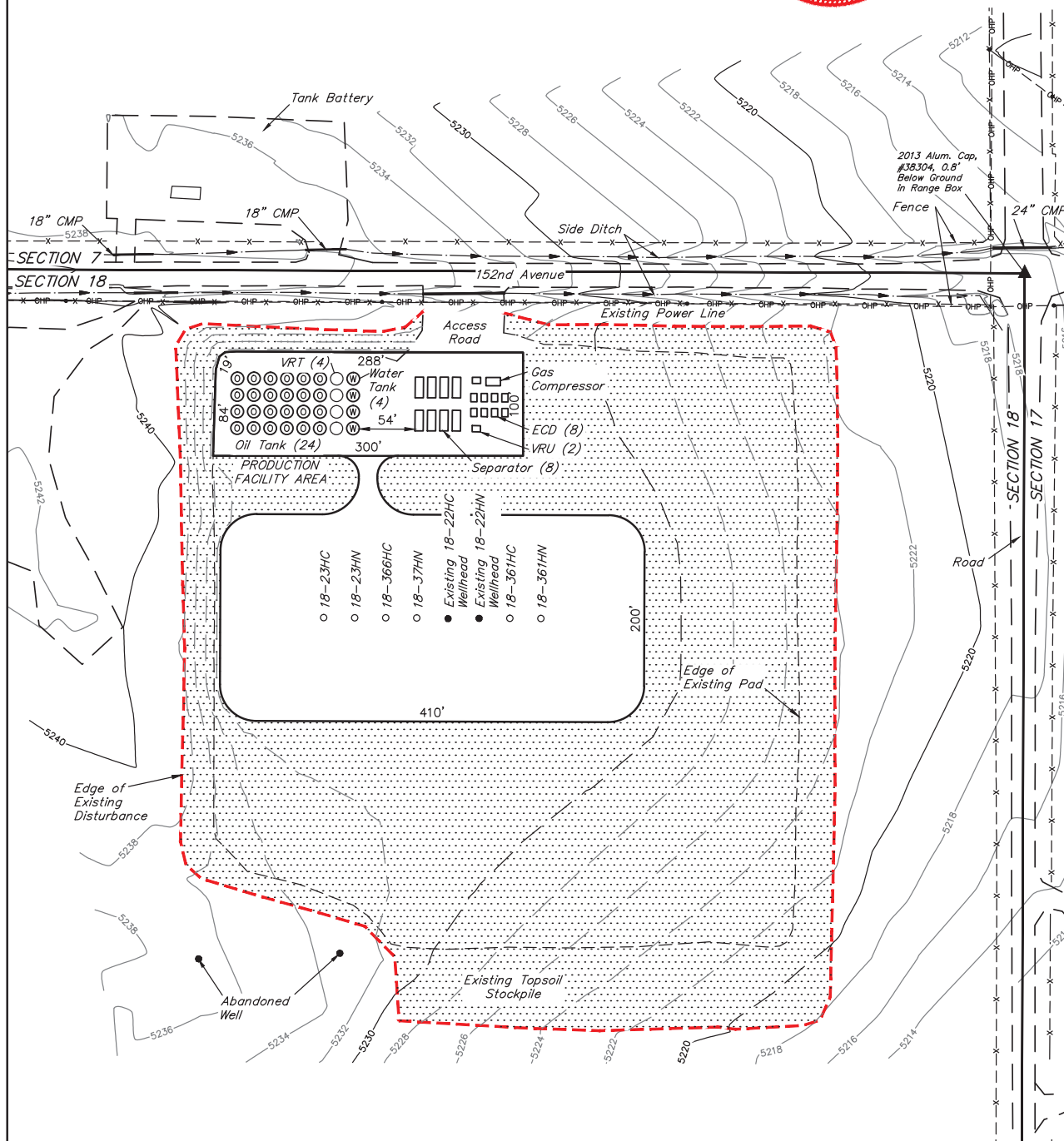
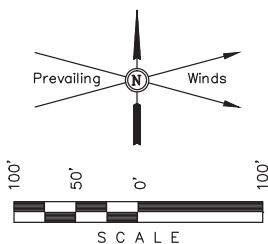


GREAT WESTERN OIL & GAS COMPANY
 PRODUCTION FACILITY LAYOUT FOR
 WILLOW BEND LD 18-23HC, 23HN, 366HC, 37HN,
 361HC & 361HN ON EXISTING
 WILLOW BEND LD 18-22HC & 22HN PAD
 SECTION 18, T1S, R67W, 6th P.M.
 NE 1/4 NE 1/4

FIGURE #4

SCALE: 1" = 100'
 DATE: 11-25-13
 DRAWN BY: J.W.
 REVISED: 12-11-13
 REVISED: 05-14-14
 REVISED: 06-11-14
 REV: 10-24-14 J.W.



APPROXIMATE ACREAGE
 UN-RECLAIMED AREA = ± 0.685 ACRES
 RECLAIMED AREA = ± 8.604 ACRES
 TOTAL = ± 9.289 ACRES

RECLAIMED AREA