



Cathedral Energy Services  
1949 North Pyrite Road  
Casper, Wyoming 82604

**145210**

5":100' - MD

7/8/2014 9:44:50 AM

**CATHEDRAL**

**Oper. Company:** Encana Oil & Gas (USA) Inc.

**Country:** U.S.A.

**State / Province:** Colorado

**County / Parish:** Weld

**Started:** 06/22/2014 02:30 PM

**API/UWI:** 05-123-3922000

**Field:** Wattenburg

**Well:** Mumby State 4B-36H

**Rig:** Helmerich & Payne 522

**Ended:** 07/04/2014 05:00 PM

Gamma Ray  
Section Plane: 0.00  
Magnetic North: 8.41  
Gamma Attenuation Factor:  
Gamma Averaging: 7%

### Personnel

**Day Hand:** J. Nichols/A. Stewart

**Night Hand:** T.Kapsch/C. Horkin

**Comp. Emp:**

Maximum Temperature: 228° f

### Location

**Latitude:** 40.090827

**Longitude:** -104719659

**Elev. GL:** 5018

**Elev. DF:**

**Elev. KB:** 5048

Log and Survey Depth Relative to Kelly Bushing (KB) Depth

### Hole Data

Size	From	To
12-1/4	0	1149
8-3/4	1149	7846
6.125	7846	11987

### Casing Data

Size	From	To
9-5/8	0	1139
7	0	7836
4	0	11.977

### Bit Sizes

Size	From	To
12-1/4	0	1149
8-3/4	1149	7846
6.125	7846	11987

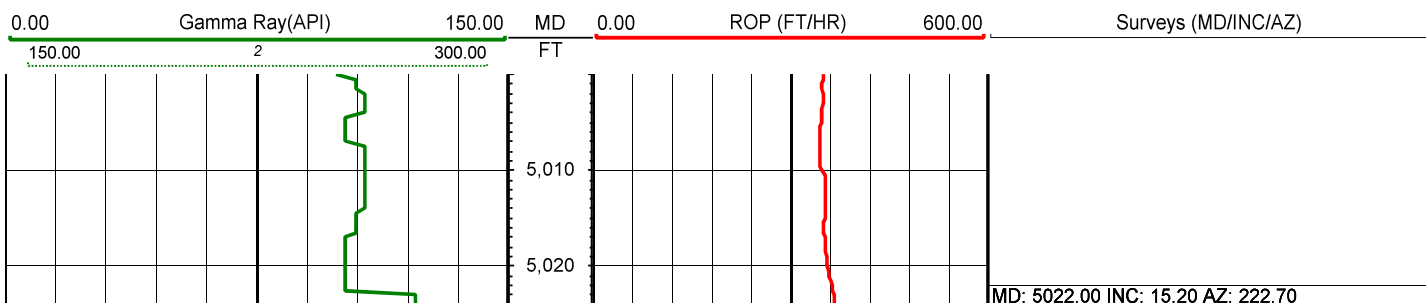
### Mud Data

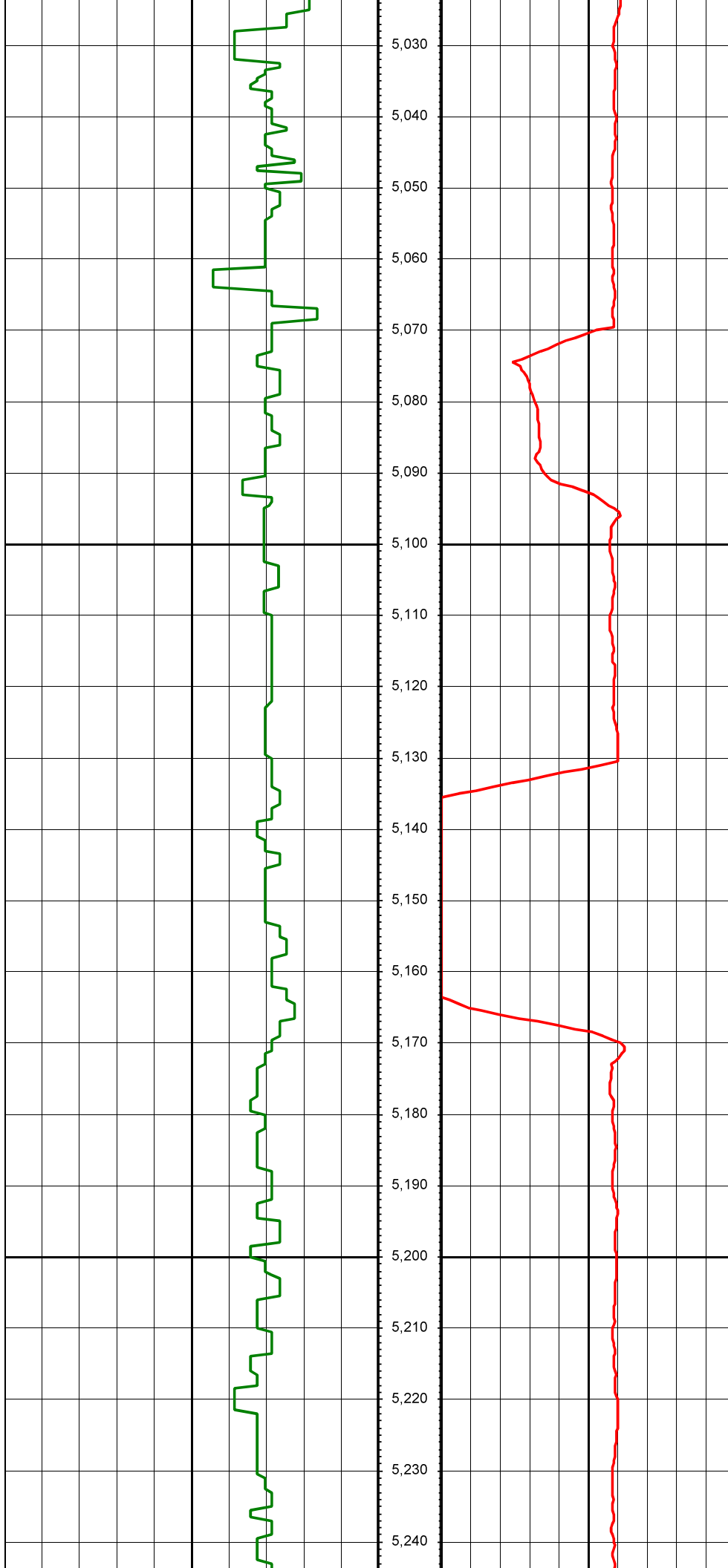
Type	Weight	Density	Viscosity	Rm	Rmf	Rmc	From	To
------	--------	---------	-----------	----	-----	-----	------	----

### Tool Run Data

Serial Number	Gamma Offset	Resist. Offset	Start Time	Start Depth	End Time	End Depth
232	36.39	0	6/22/2014 2:30:34 PM	1149	6/30/2014 9:30:34 AM	7846
232	38.12	0	7/1/2014 1:00:36 PM	7846	7/4/2014 5:00:36 PM	11987

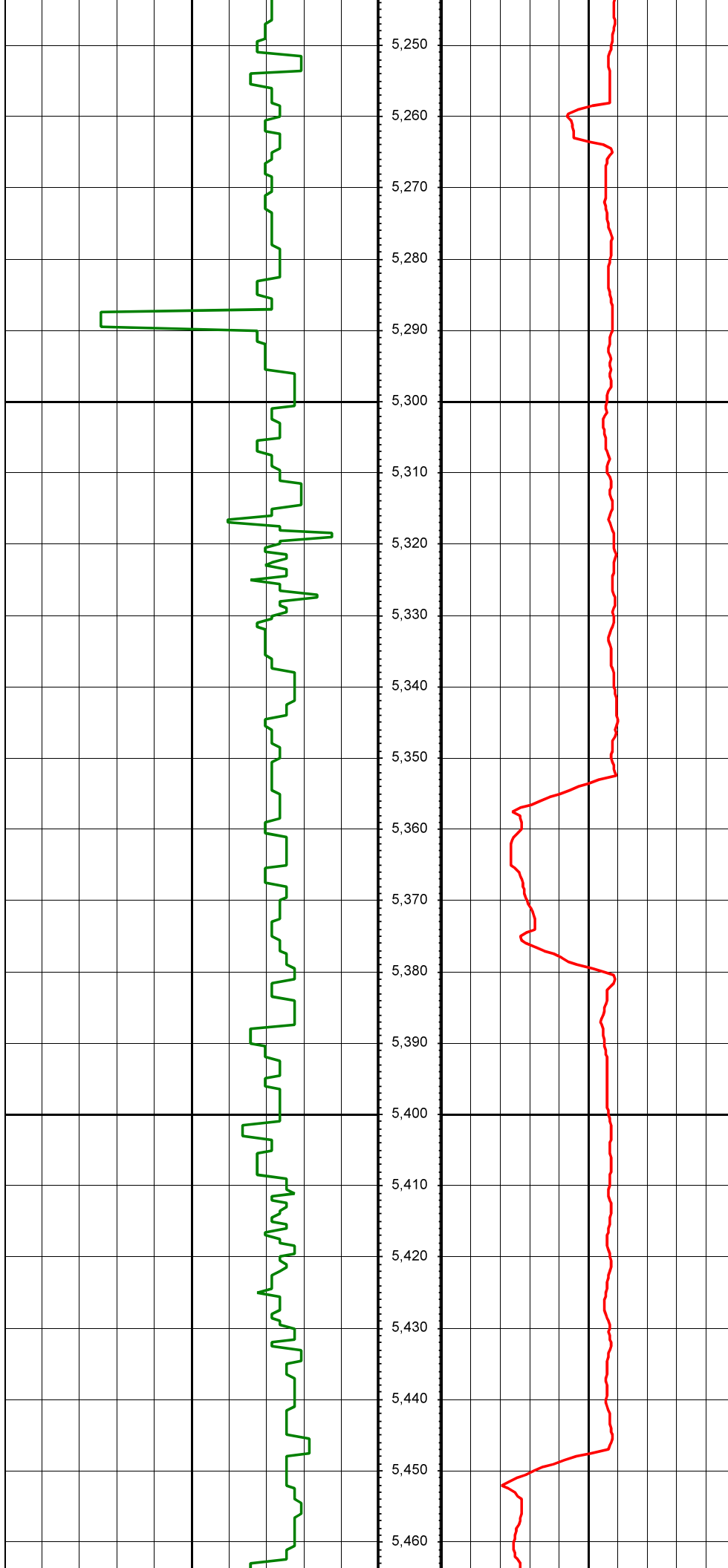
*All interpretations are opinions based on inferences from electrical or other measurements and we cannot and do not guarantee the accuracy or correctness of any interpretation, and we shall not except in the case of gross or willful negligence on our part, be liable or responsible for any loss, cost damages or expenses incurred or sustained by anyone resulting from an interpretation made by any of our officers, agents, or employees.*





MD: 5116.00 INC: 16.10 AZ: 222.10

MD: 5211.00 INC: 15.10 AZ: 219.10



5,250

5,260

5,270

5,280

5,290

5,300

5,310

5,320

5,330

5,340

5,350

5,360

5,370

5,380

5,390

5,400

5,410

5,420

5,430

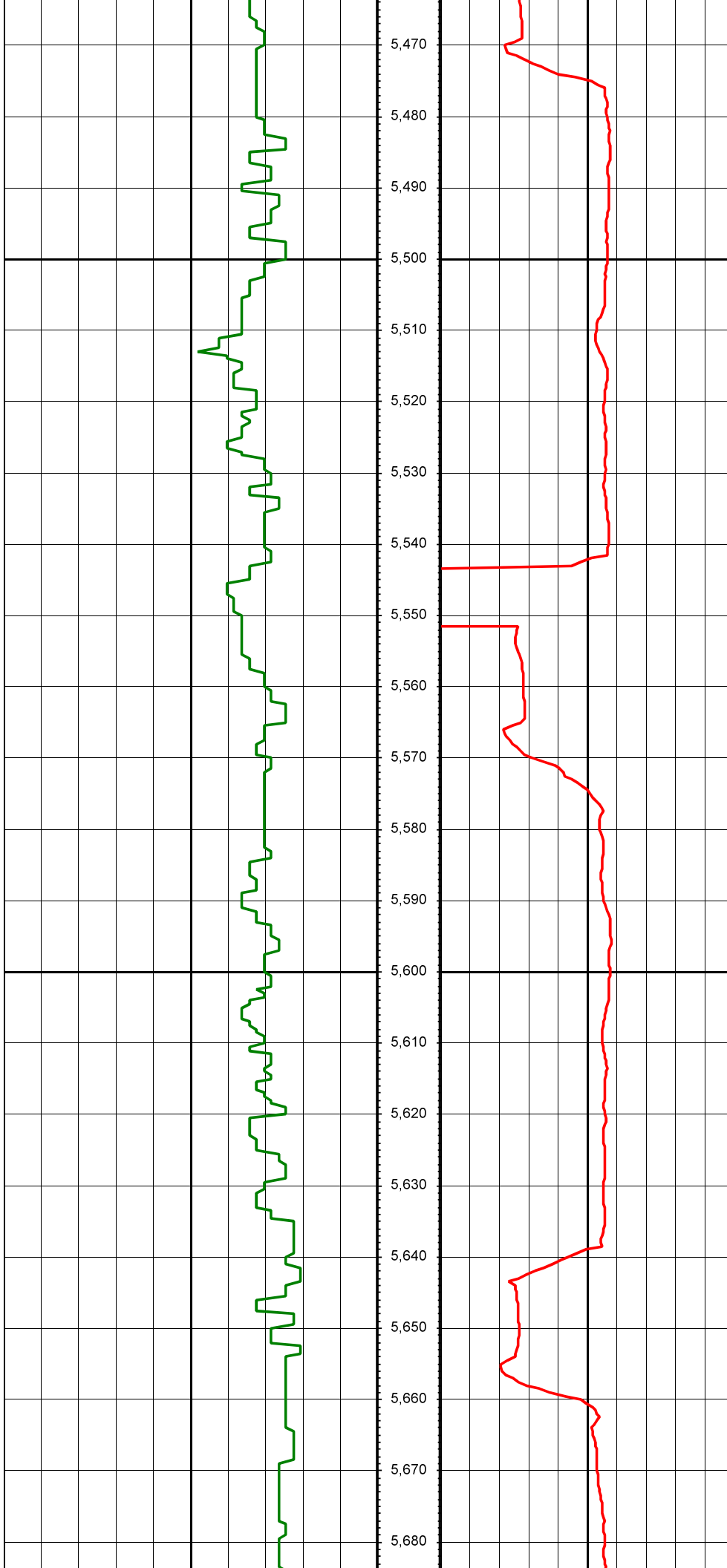
5,440

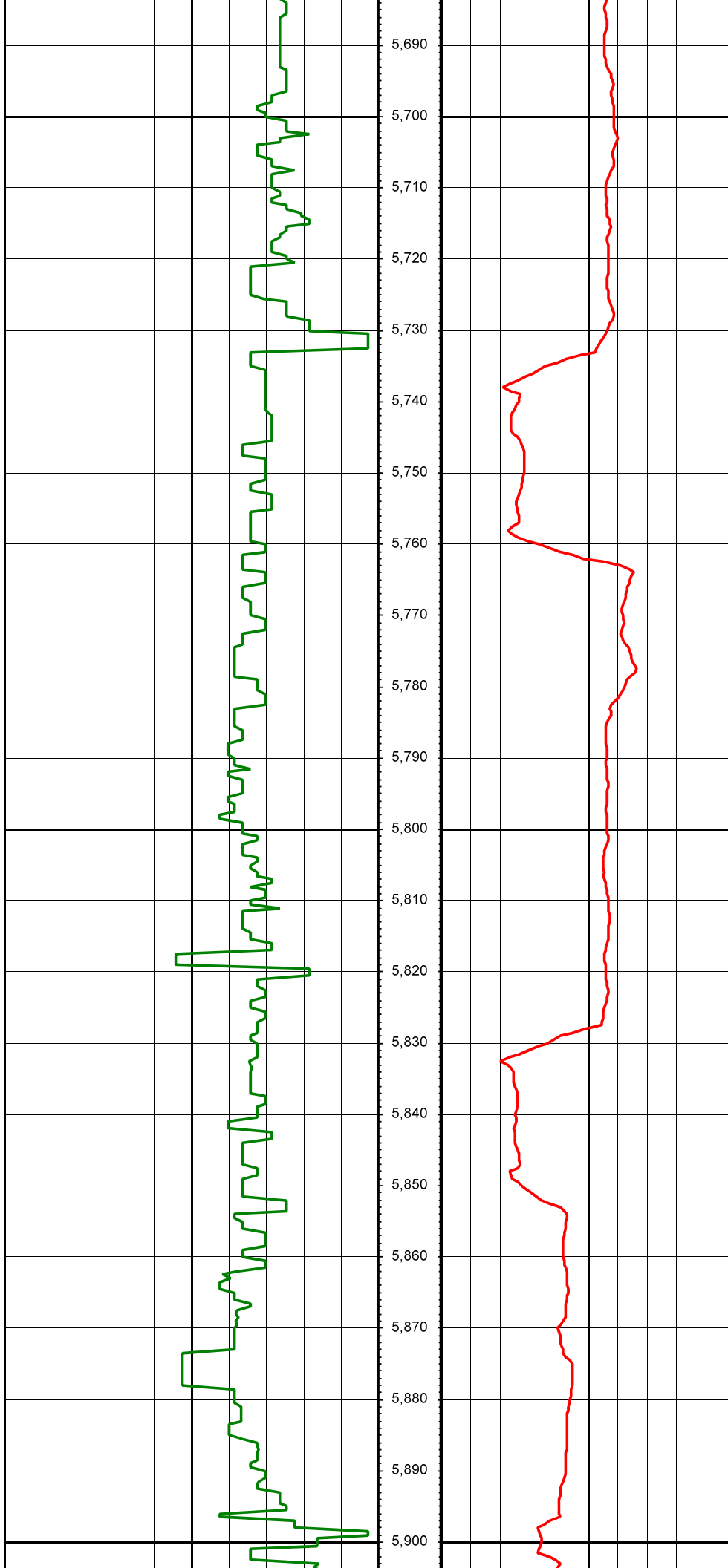
5,450

5,460

MD: 5305.00 INC: 14.10 AZ: 218.60

MD: 5400.00 INC: 13.30 AZ: 223.80

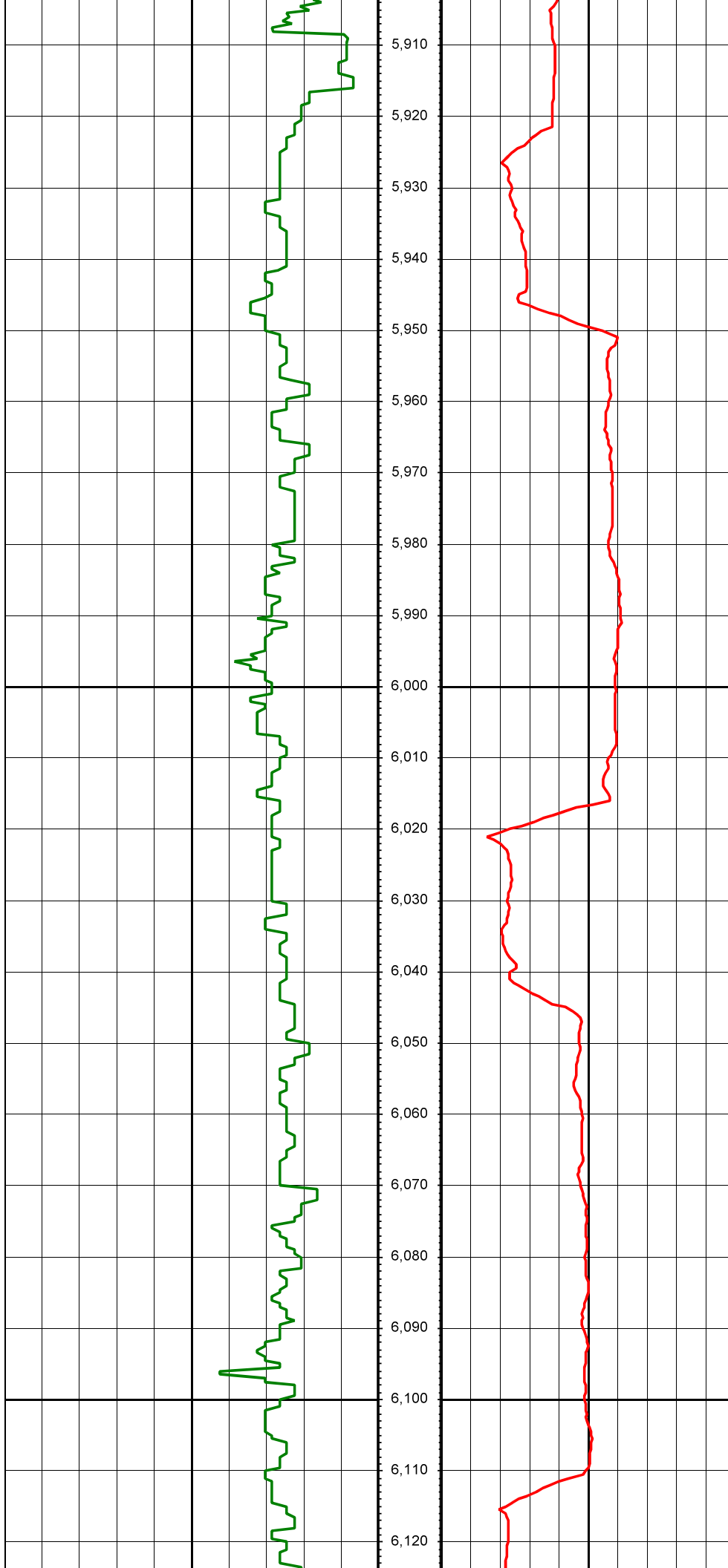




MD: 5684.00 INC: 16.70 AZ: 215.70

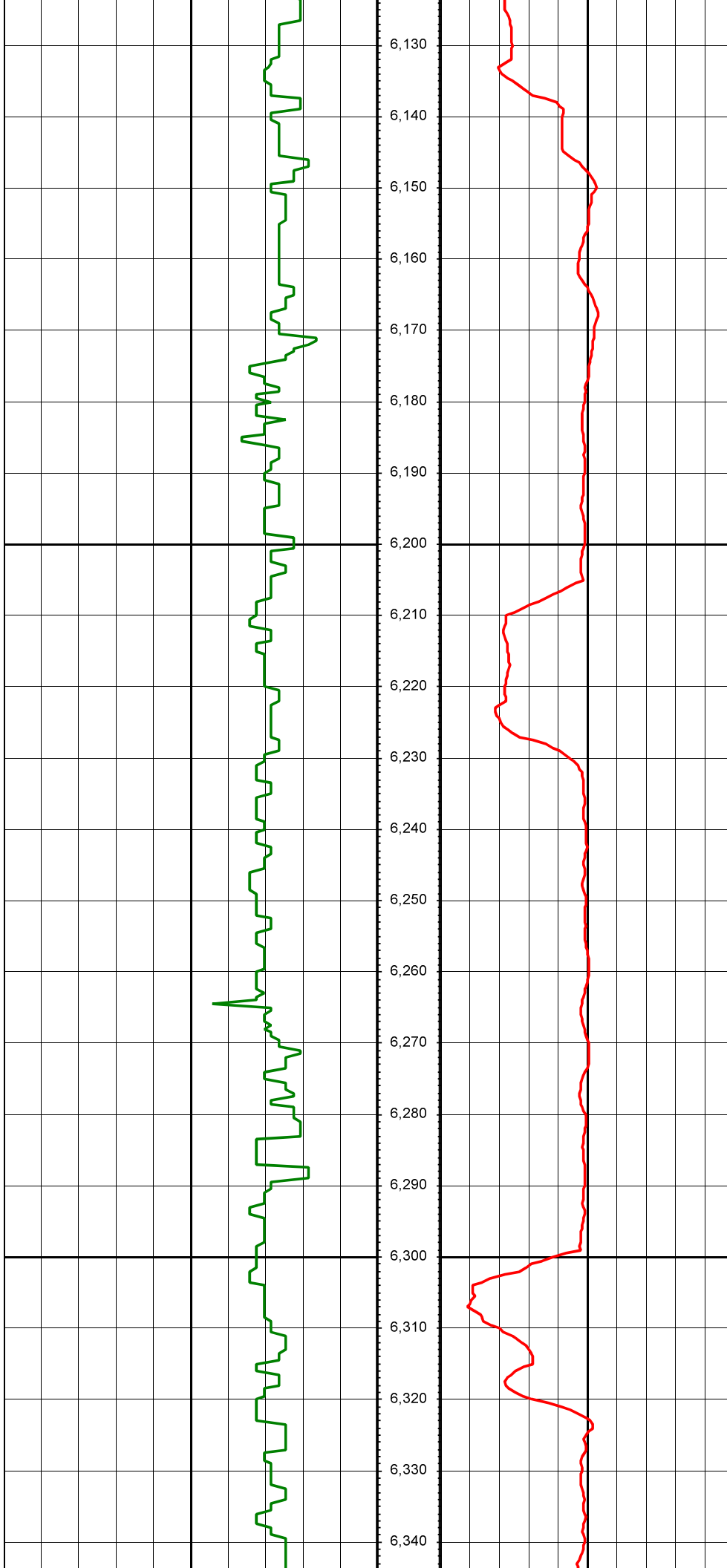
MD: 5778.00 INC: 16.40 AZ: 209.90

MD: 5873.00 INC: 16.90 AZ: 213.80



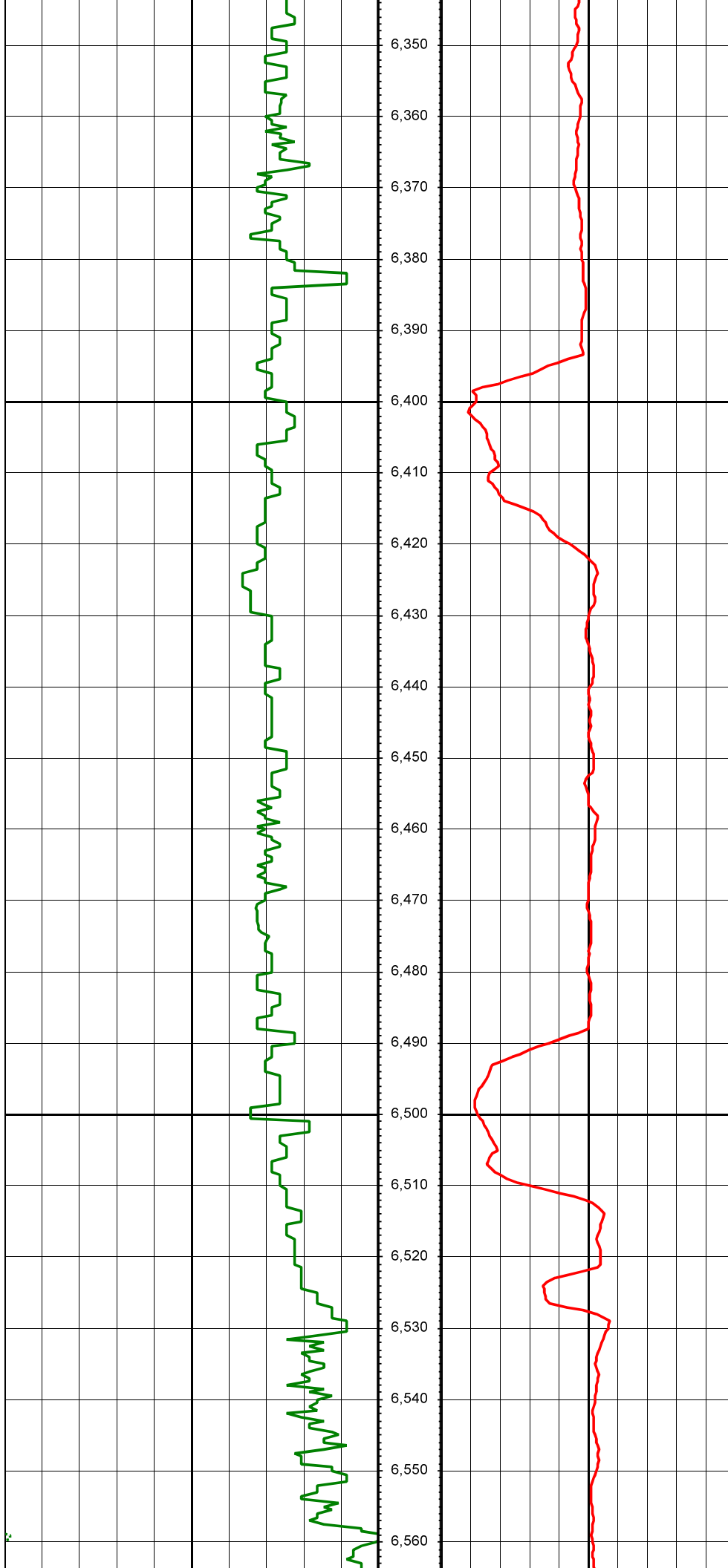
MD: 5967.00 INC: 15.60 AZ: 214.50

MD: 6062.00 INC: 14.50 AZ: 221.90



MD: 6157.00 INC: 15.30 AZ: 221.40

MD: 6251.00 INC: 16.00 AZ: 224.70

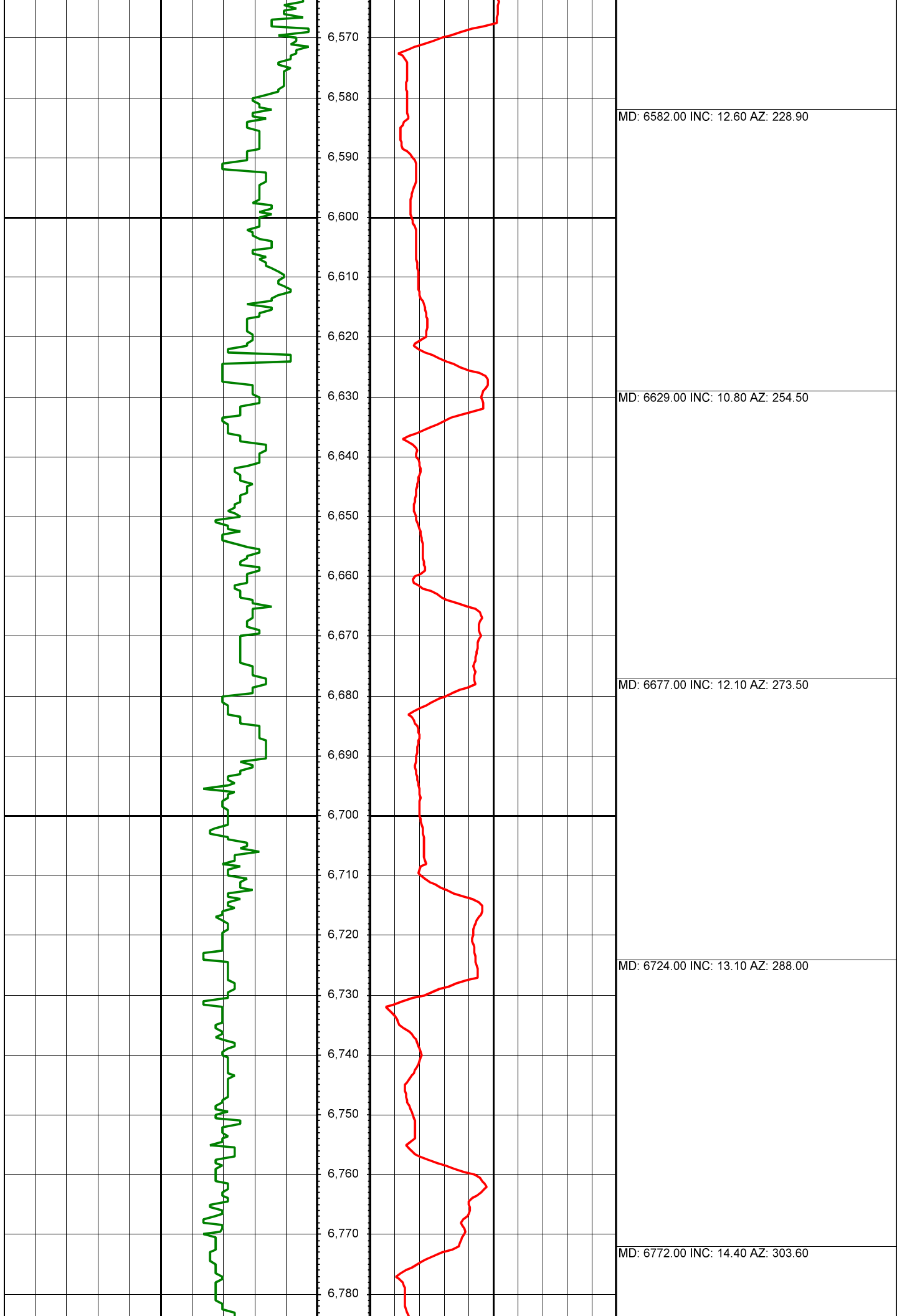


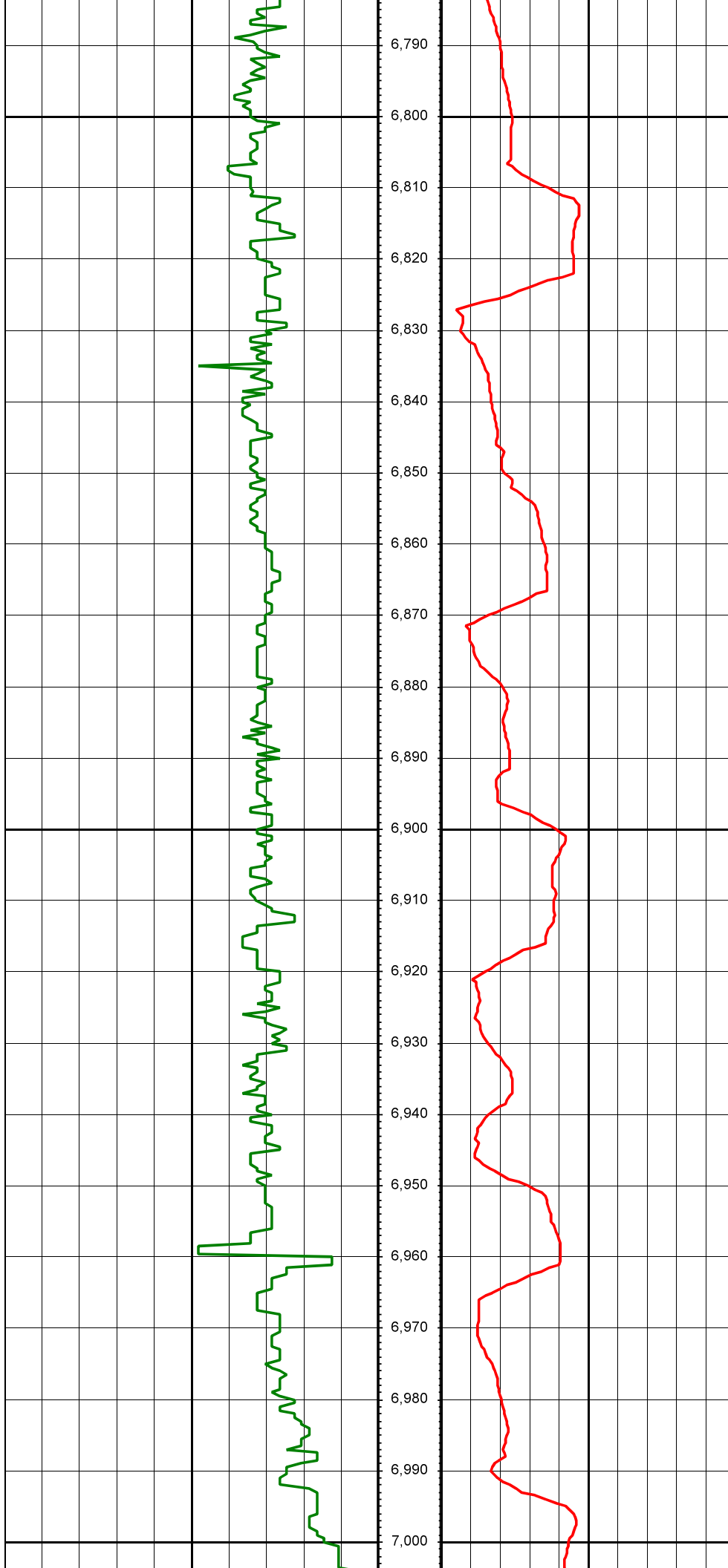
MD: 6346.00 INC: 15.90 AZ: 219.40

MD: 6440.00 INC: 14.80 AZ: 217.60

MD: 6535.00 INC: 15.00 AZ: 220.80





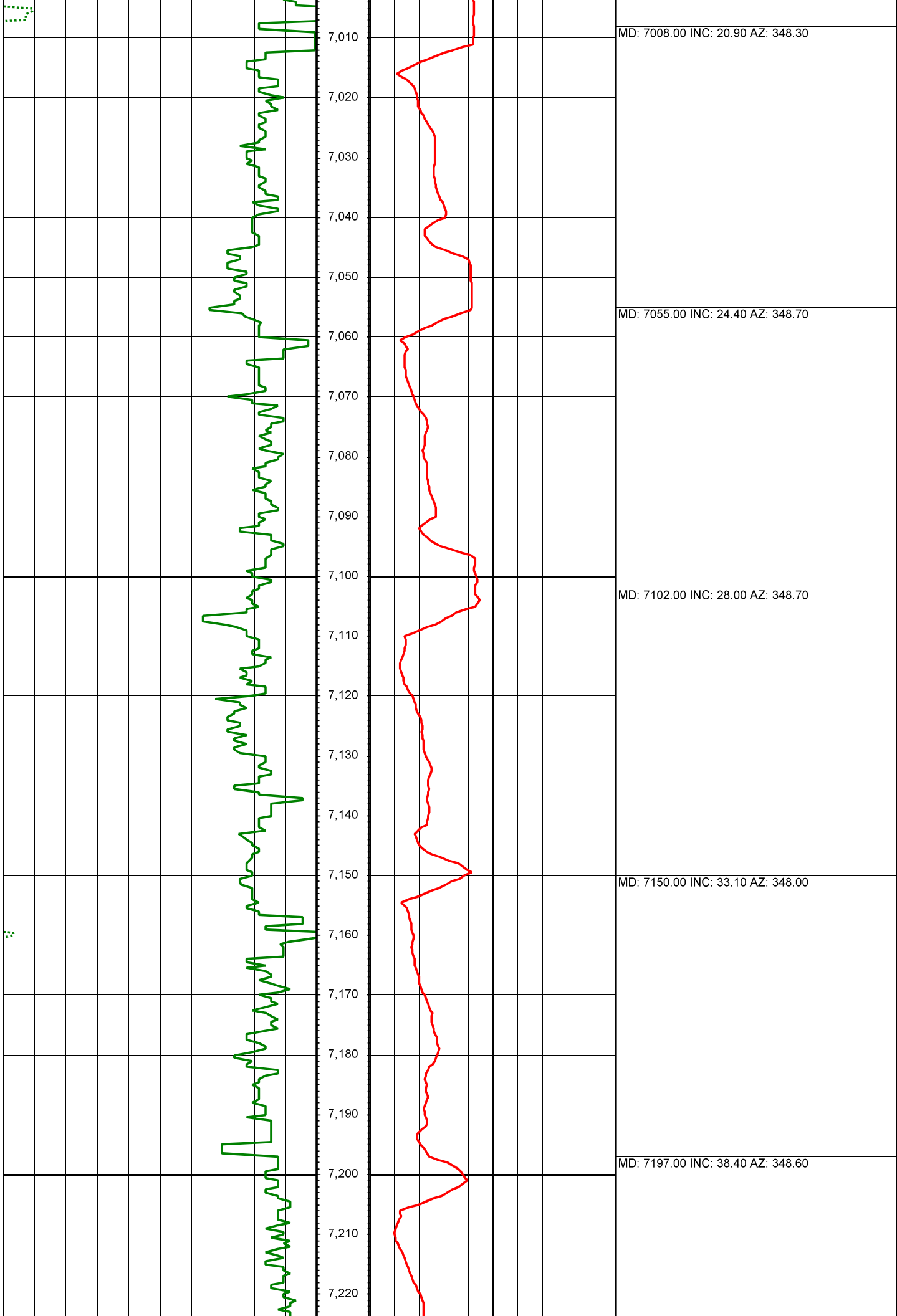


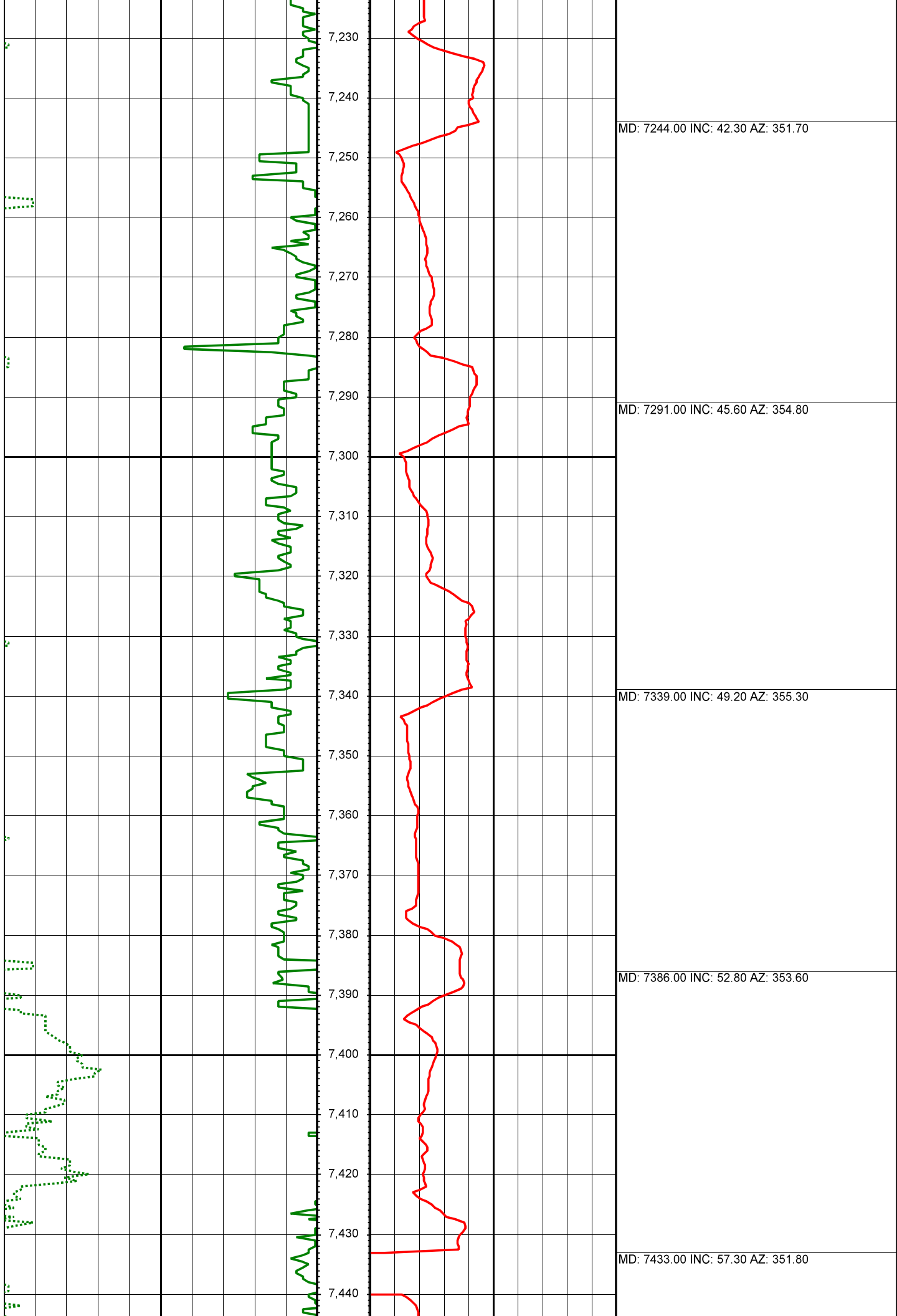
MD: 6819.00 INC: 15.90 AZ: 320.00

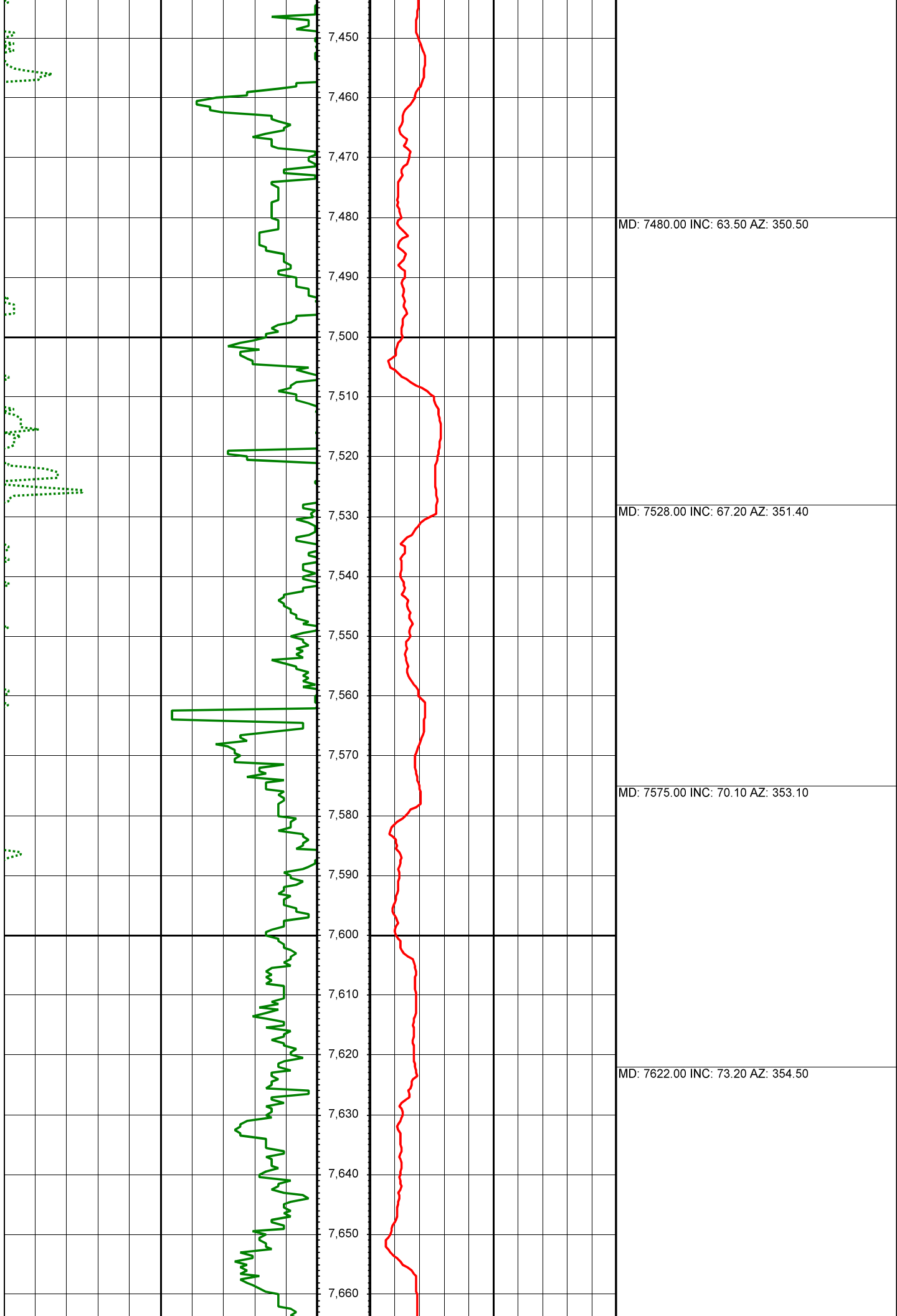
MD: 6866.00 INC: 15.90 AZ: 330.20

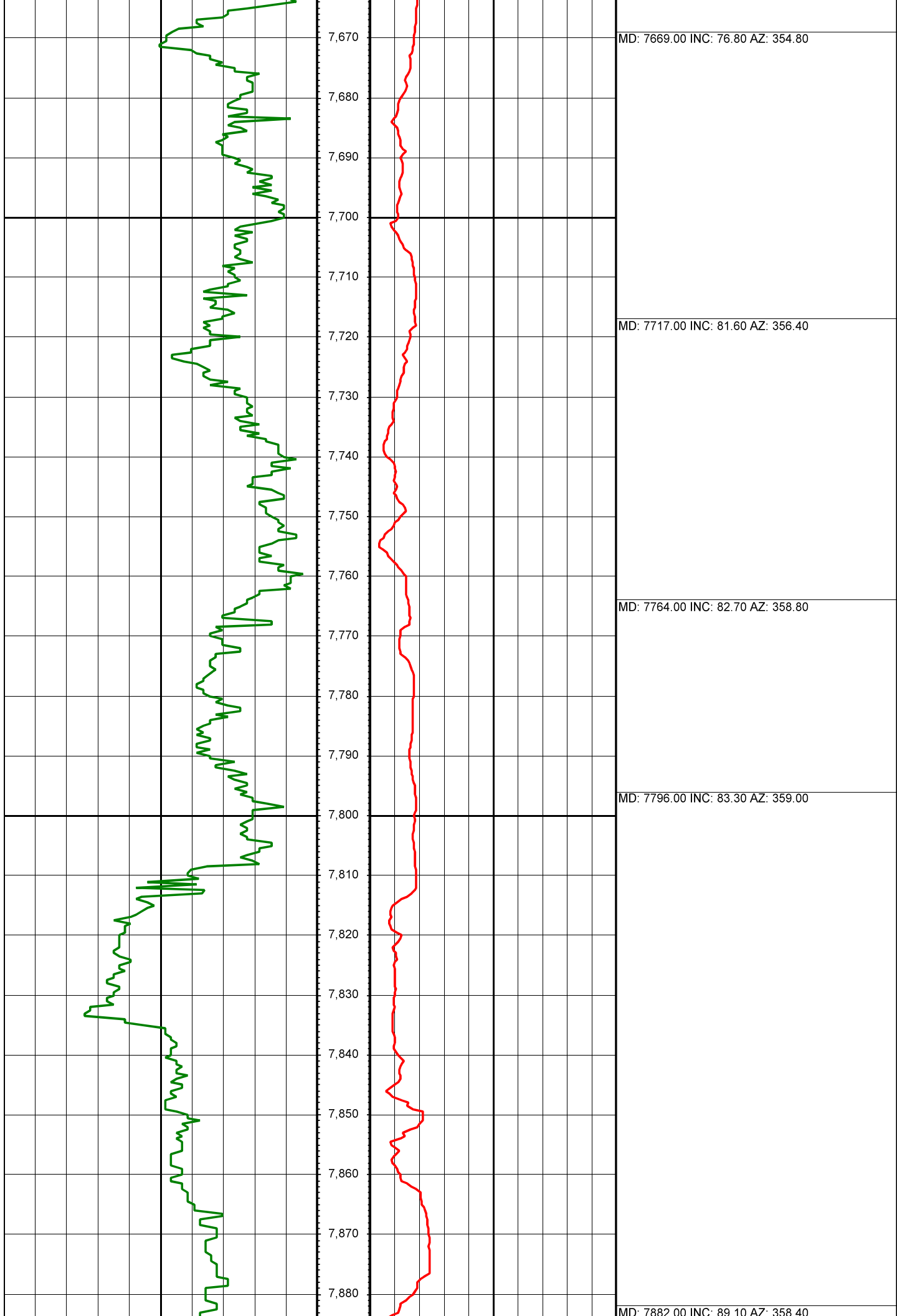
MD: 6913.00 INC: 16.50 AZ: 339.10

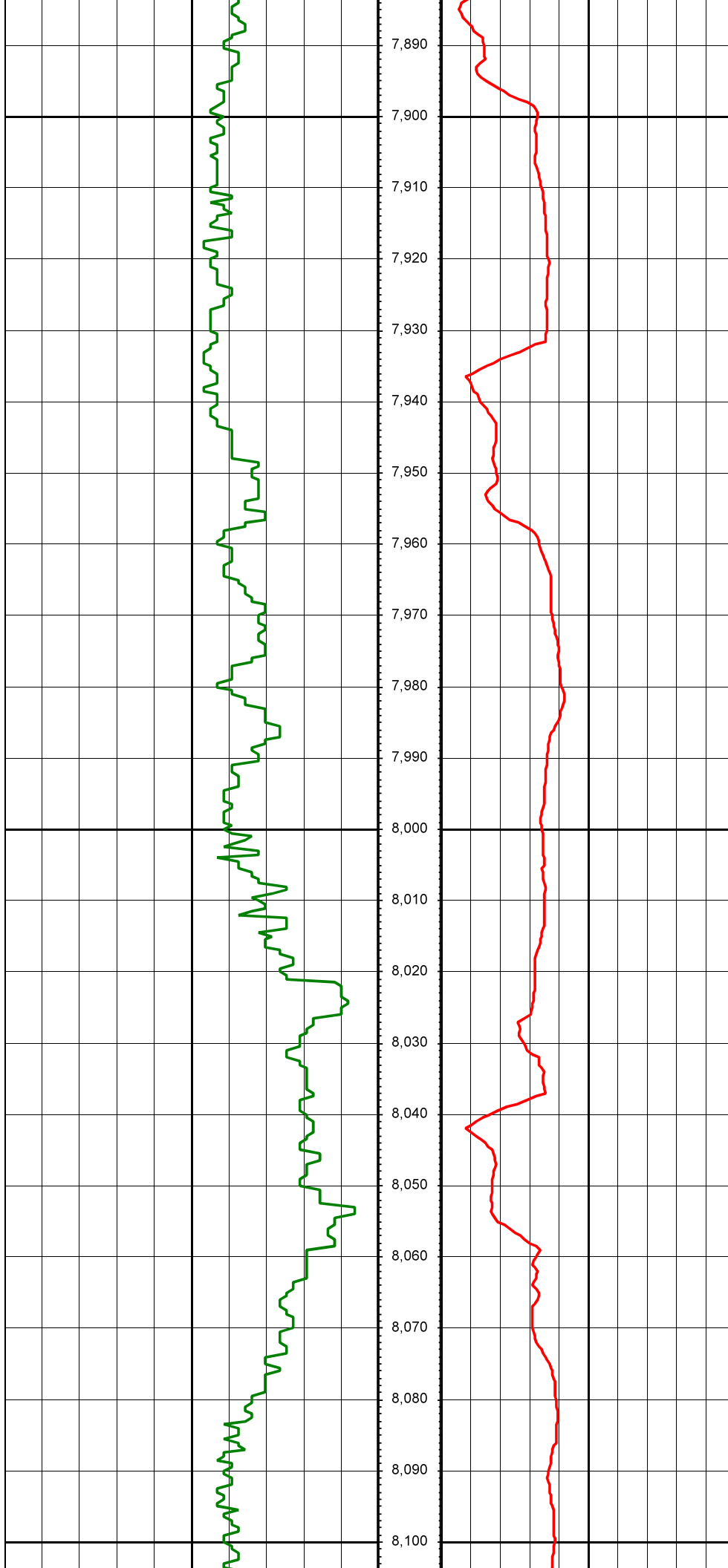
MD: 6961.00 INC: 18.90 AZ: 346.10





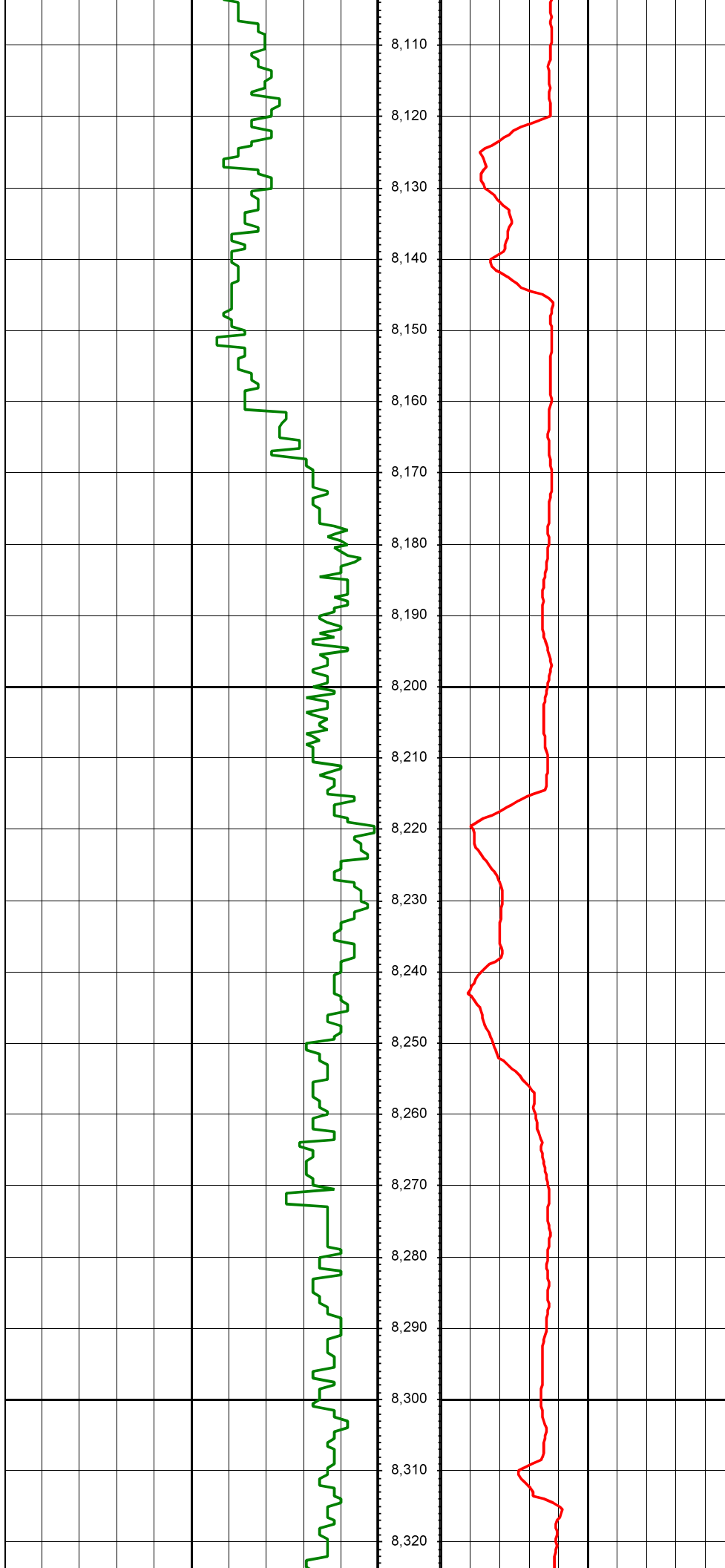






MD: 7977.00 INC: 92.30 AZ: 358.60

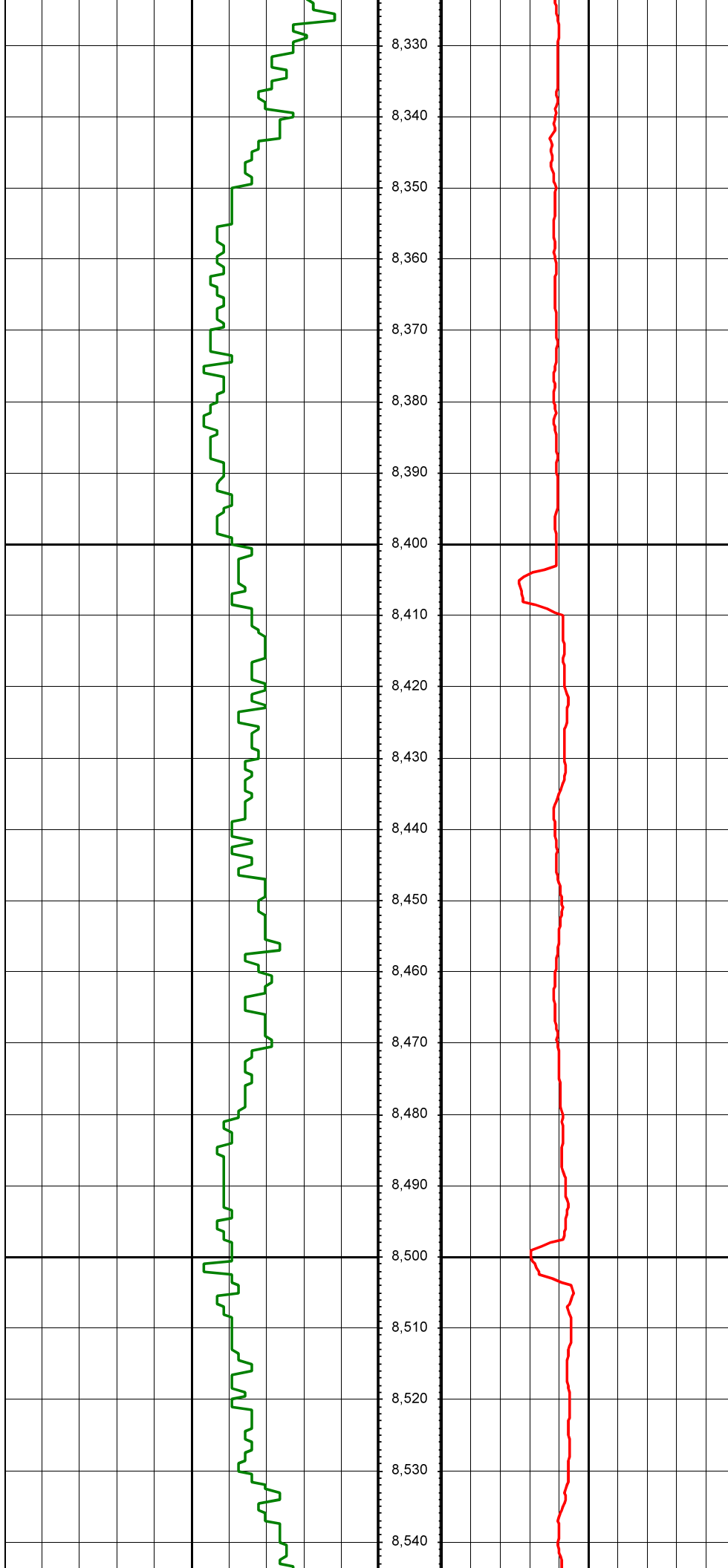
MD: 8072.00 INC: 91.20 AZ: 359.60



MD: 8166.00 INC: 91.30 AZ: 359.70

MD: 8261.00 INC: 88.90 AZ: 359.20

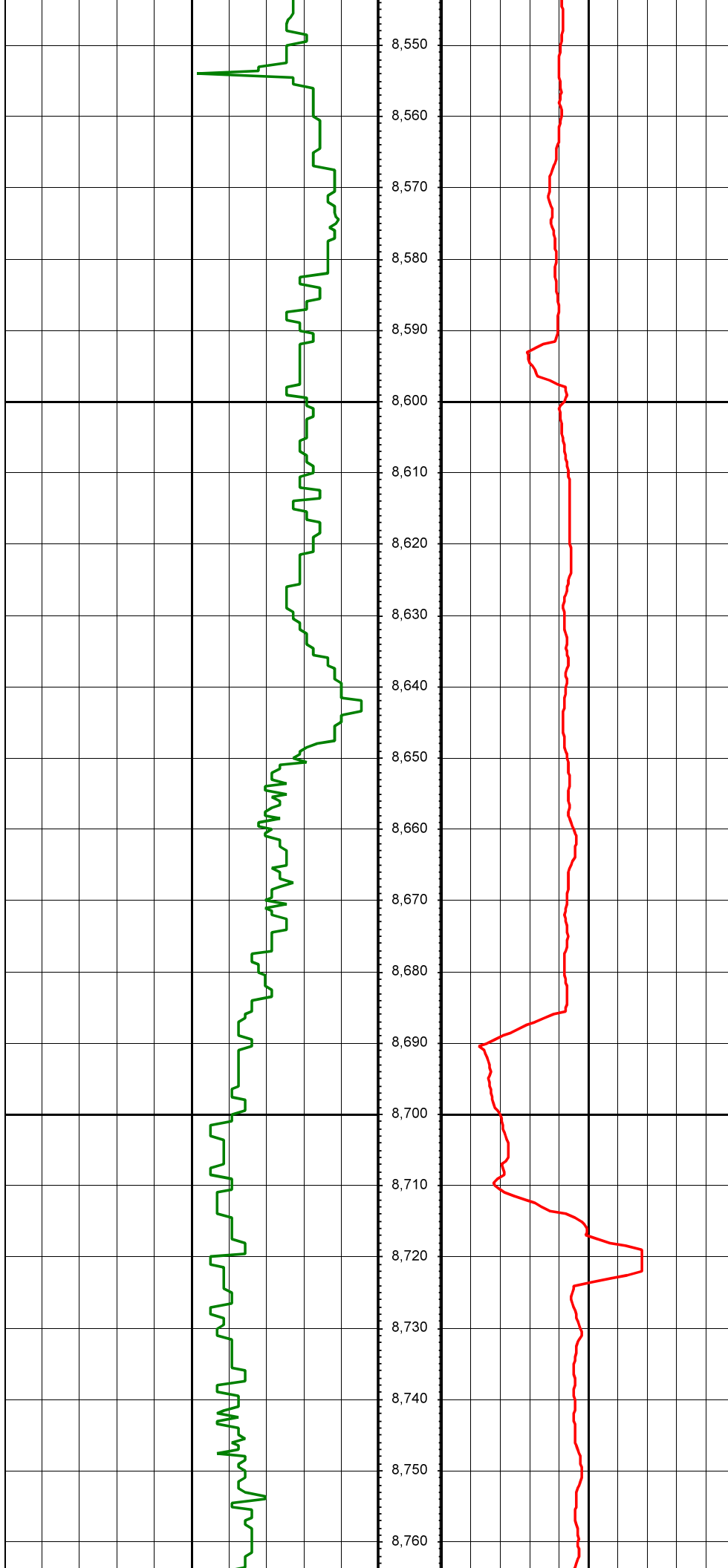




MD: 8355.00 INC: 89.10 AZ: 358.80

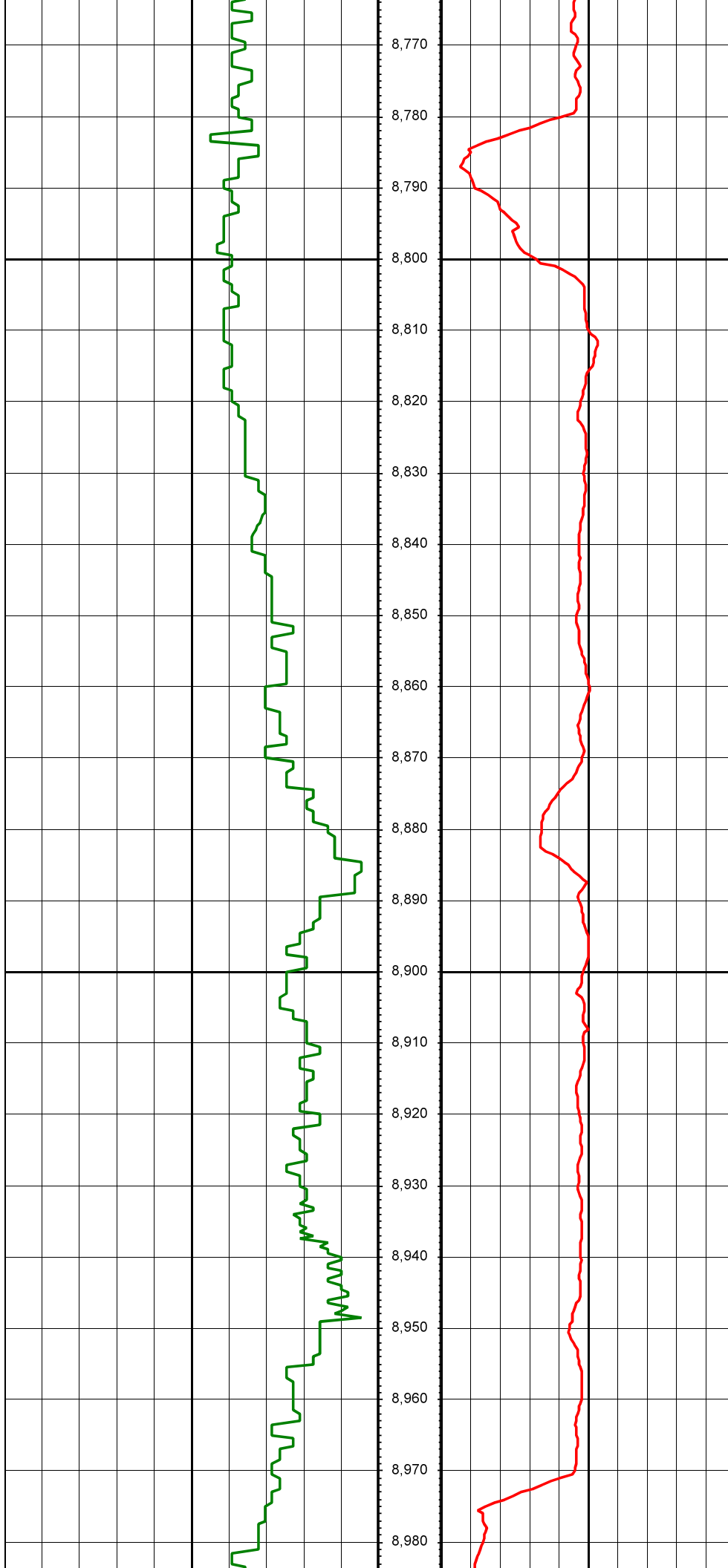
MD: 8450.00 INC: 89.00 AZ: 358.00

MD: 8544.00 INC: 88.90 AZ: 358.60



MD: 8639.00 INC: 88.80 AZ: 358.30

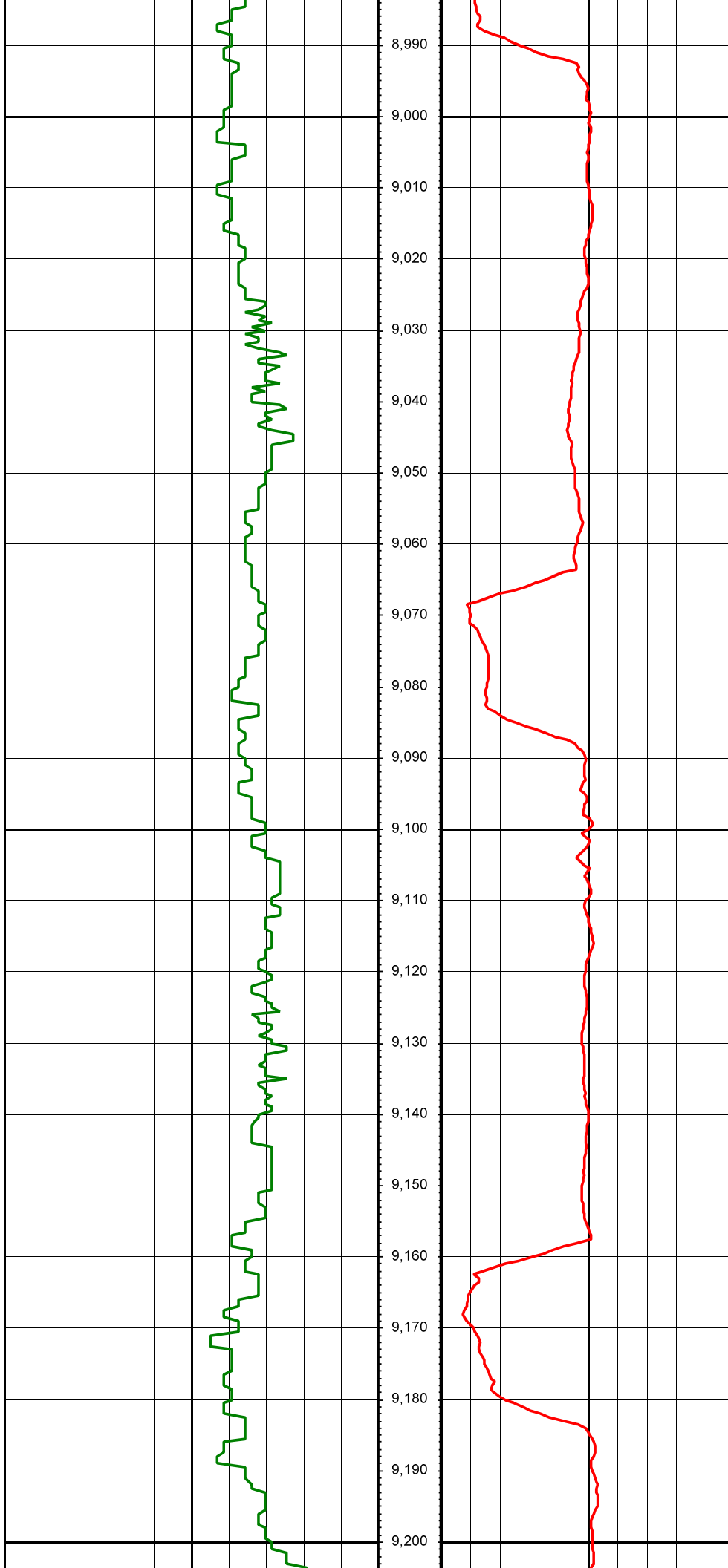
MD: 8733.00 INC: 89.50 AZ: 360.00



8,770  
8,780  
8,790  
8,800  
8,810  
8,820  
8,830  
8,840  
8,850  
8,860  
8,870  
8,880  
8,890  
8,900  
8,910  
8,920  
8,930  
8,940  
8,950  
8,960  
8,970  
8,980

MD: 8827.00 INC: 90.70 AZ: 1.70

MD: 8922.00 INC: 91.30 AZ: 1.70

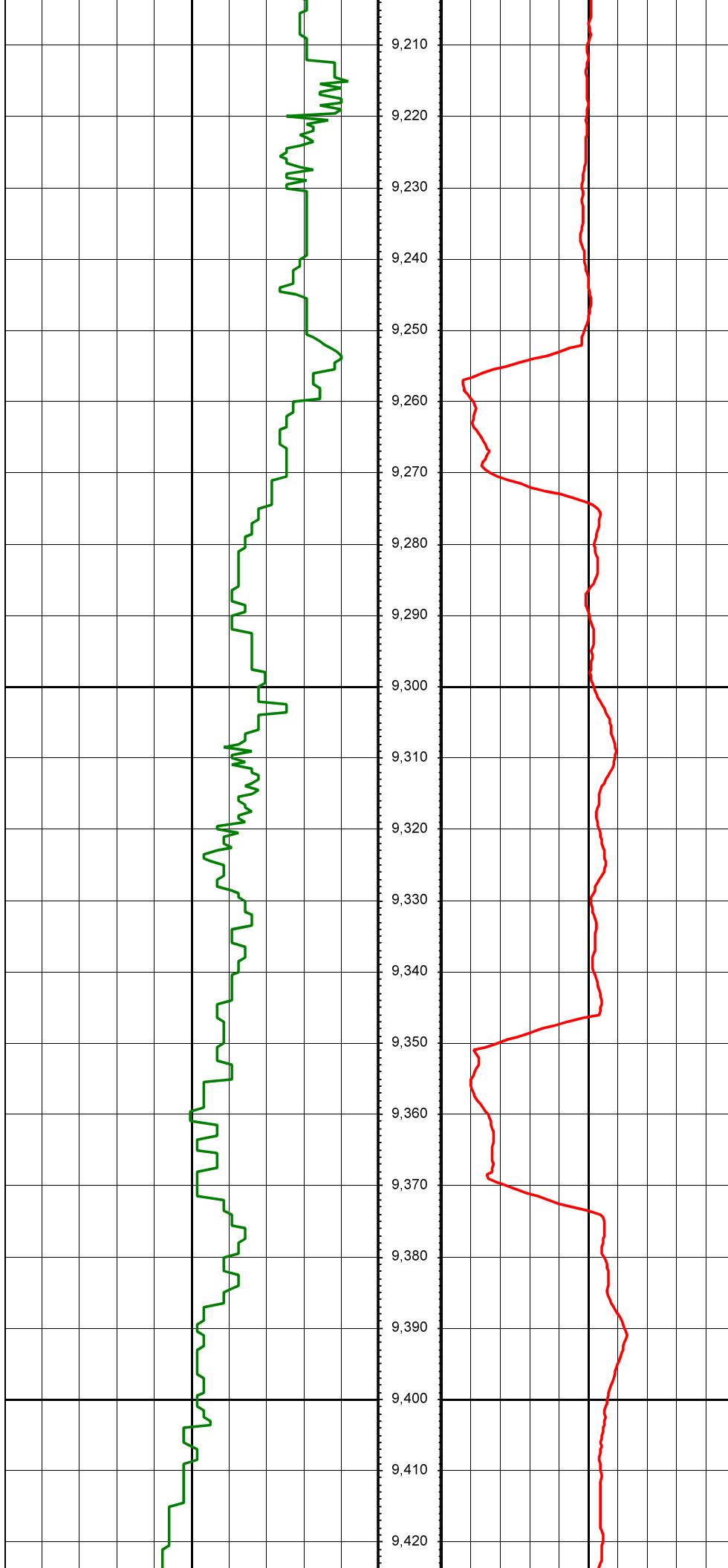


MD: 9016.00 INC: 91.20 AZ: 0.10

MD: 9110.00 INC: 89.70 AZ: 0.80

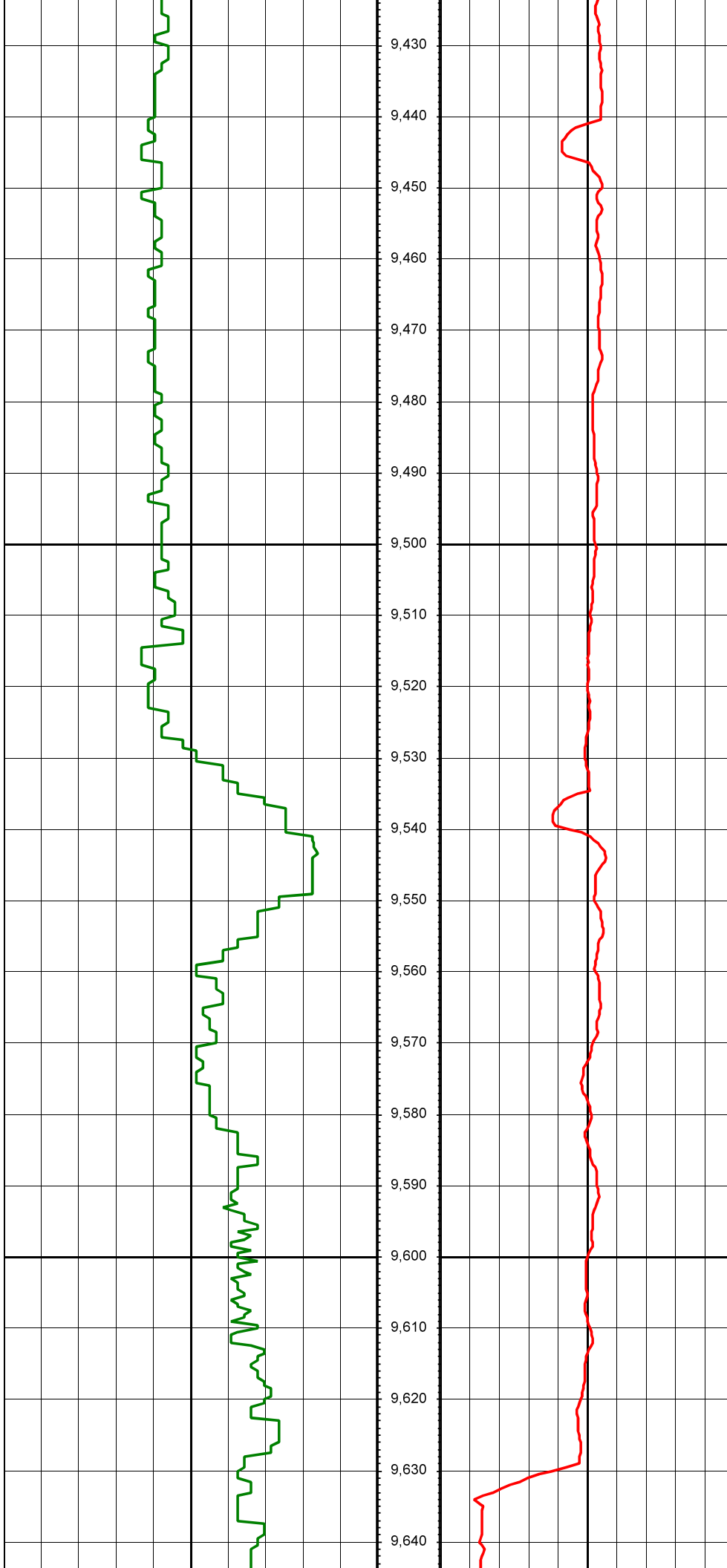
MD: 9205.00 INC: 88.20 AZ: 0.90

MD: 9205.00 INC: 88.20 AZ: 0.90



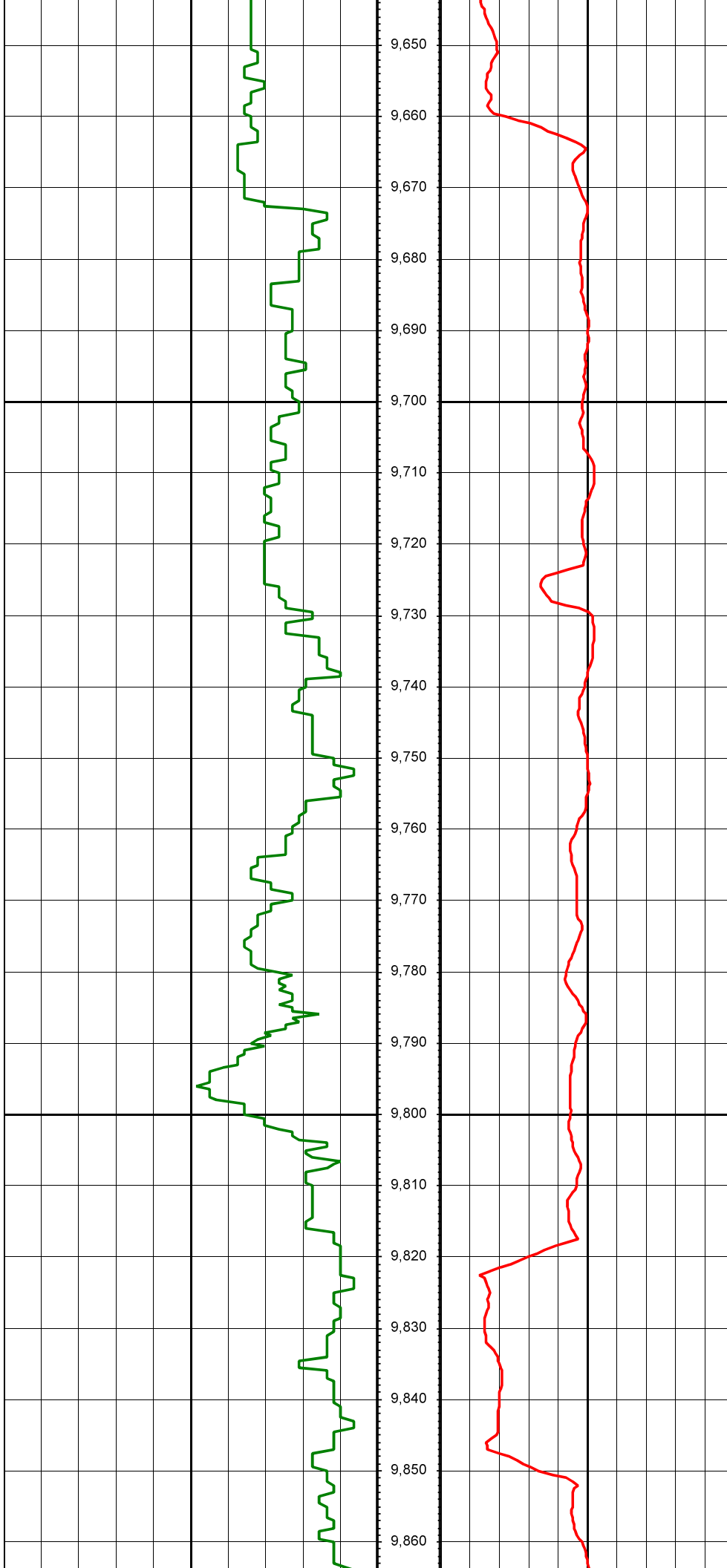
MD: 9299.00 INC: 87.80 AZ: 359.80

MD: 9394.00 INC: 88.50 AZ: 359.30



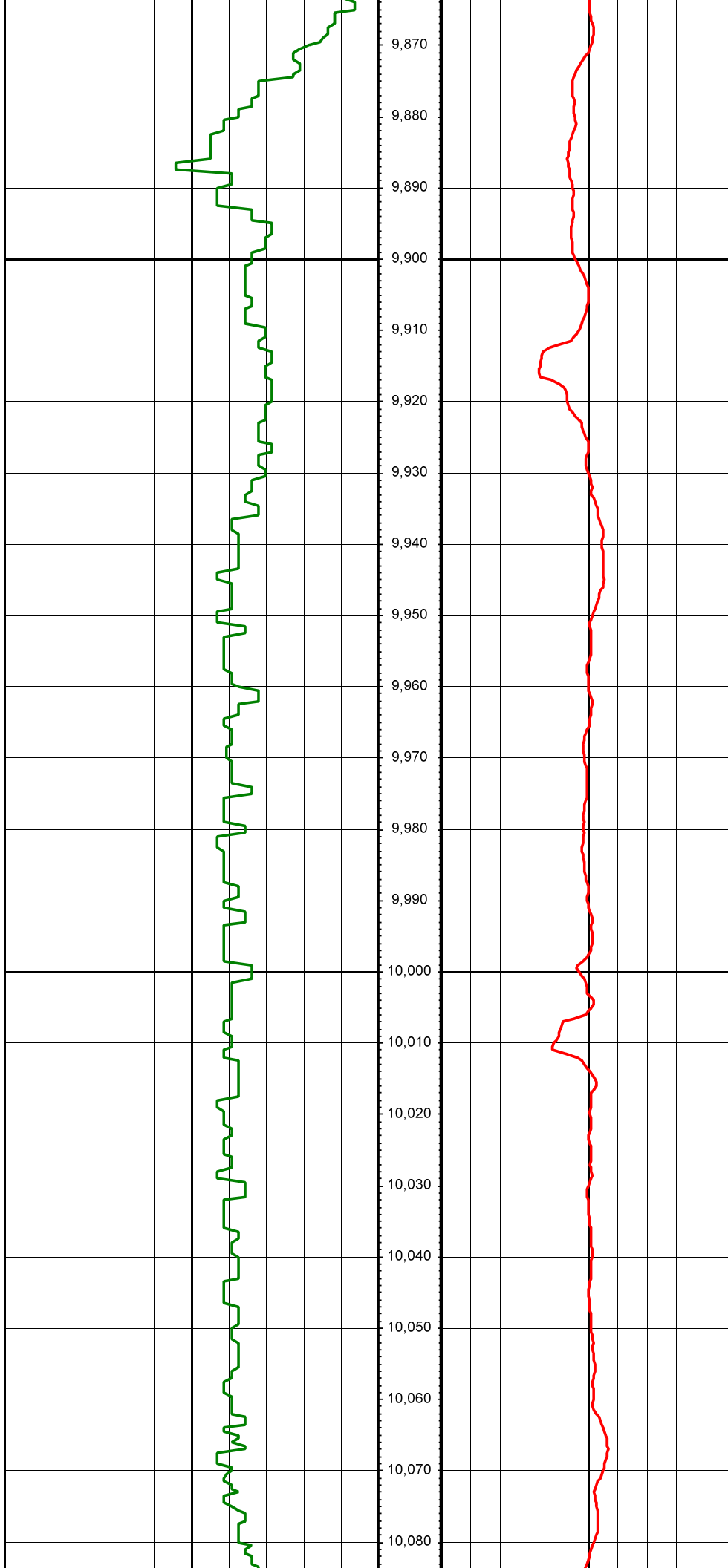
MD: 9488.00 INC: 88.80 AZ: 359.40

MD: 9583.00 INC: 88.40 AZ: 358.70



MD: 9677.00 INC: 89.60 AZ: 0.40

MD: 9772.00 INC: 88.80 AZ: 0.20

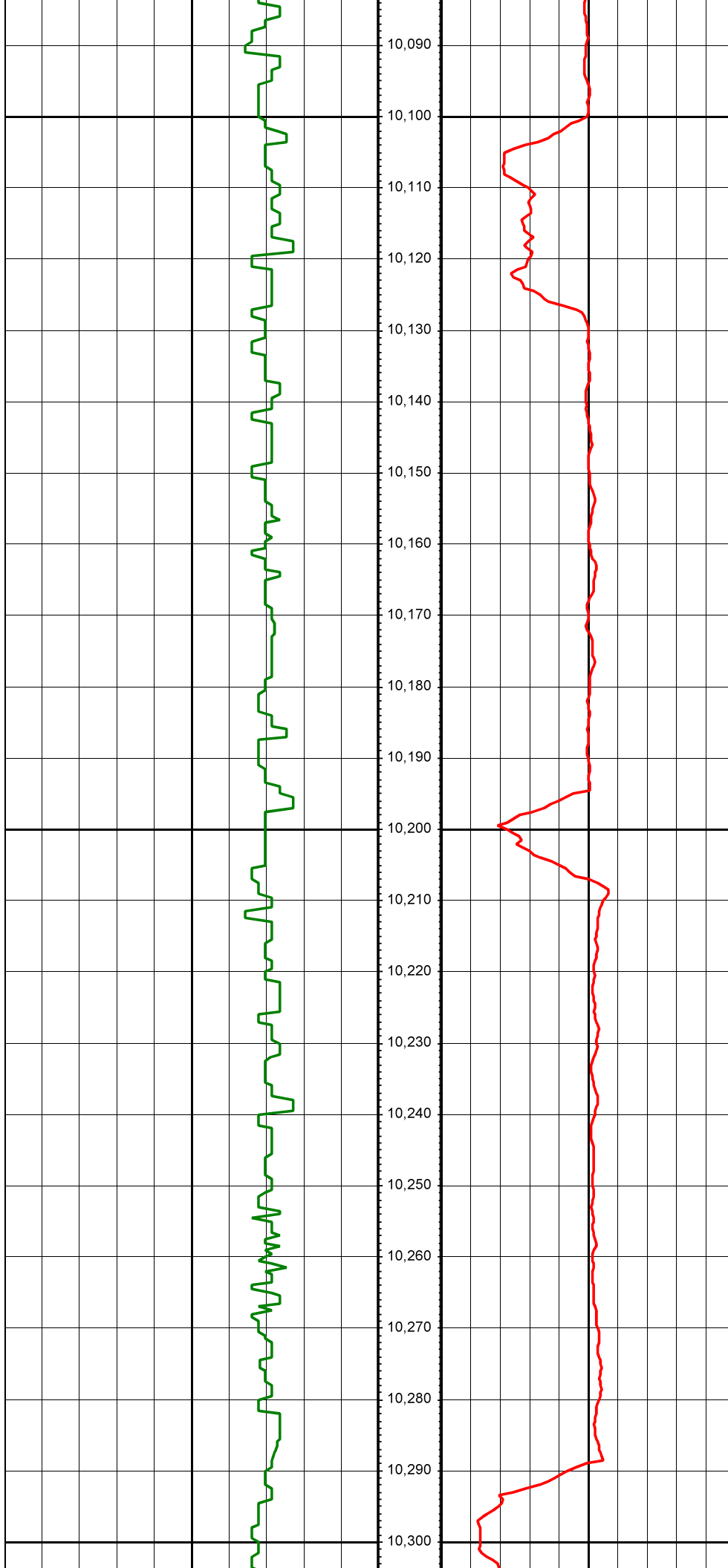


MD: 9866.00 INC: 90.60 AZ: 0.50

MD: 9961.00 INC: 90.50 AZ: 0.40

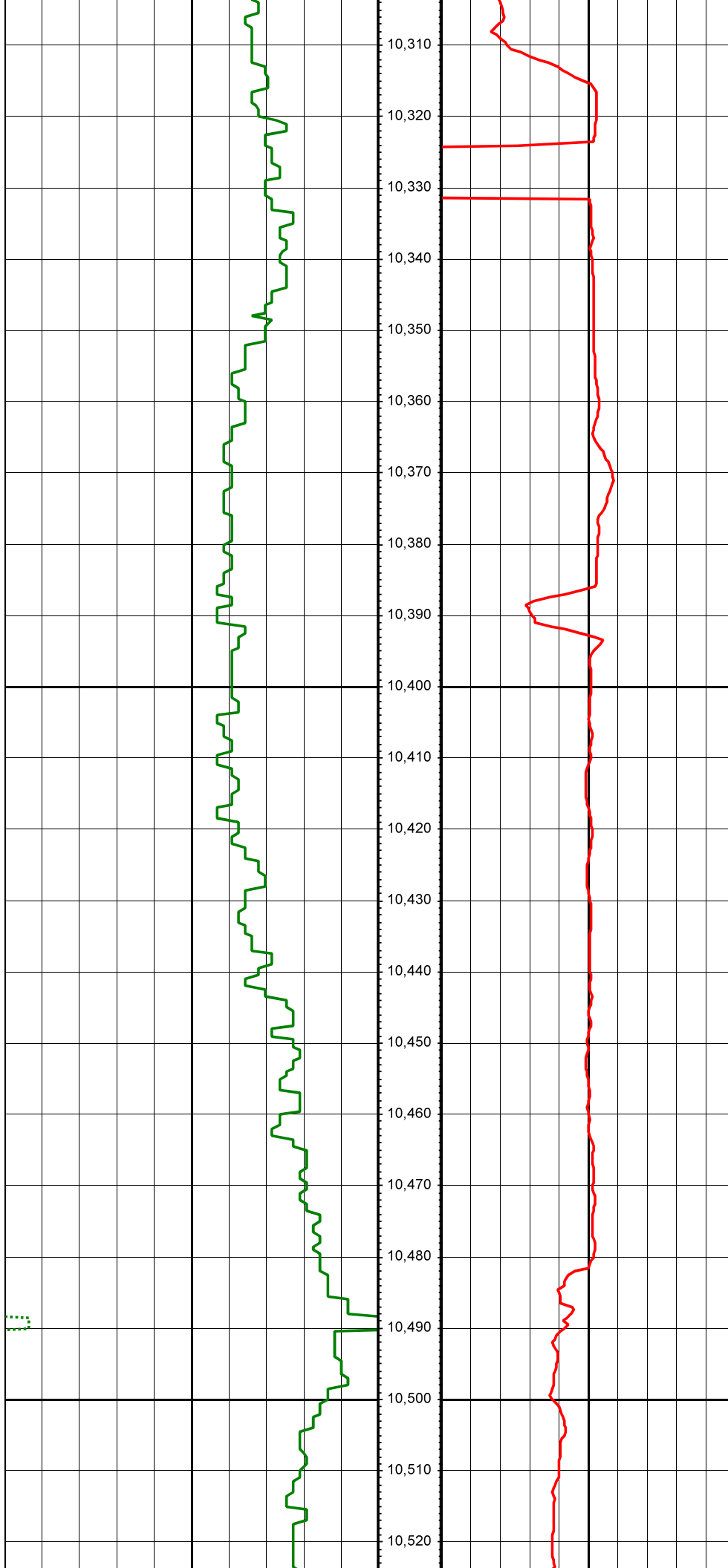
MD: 10055.00 INC: 90.90 AZ: 0.80





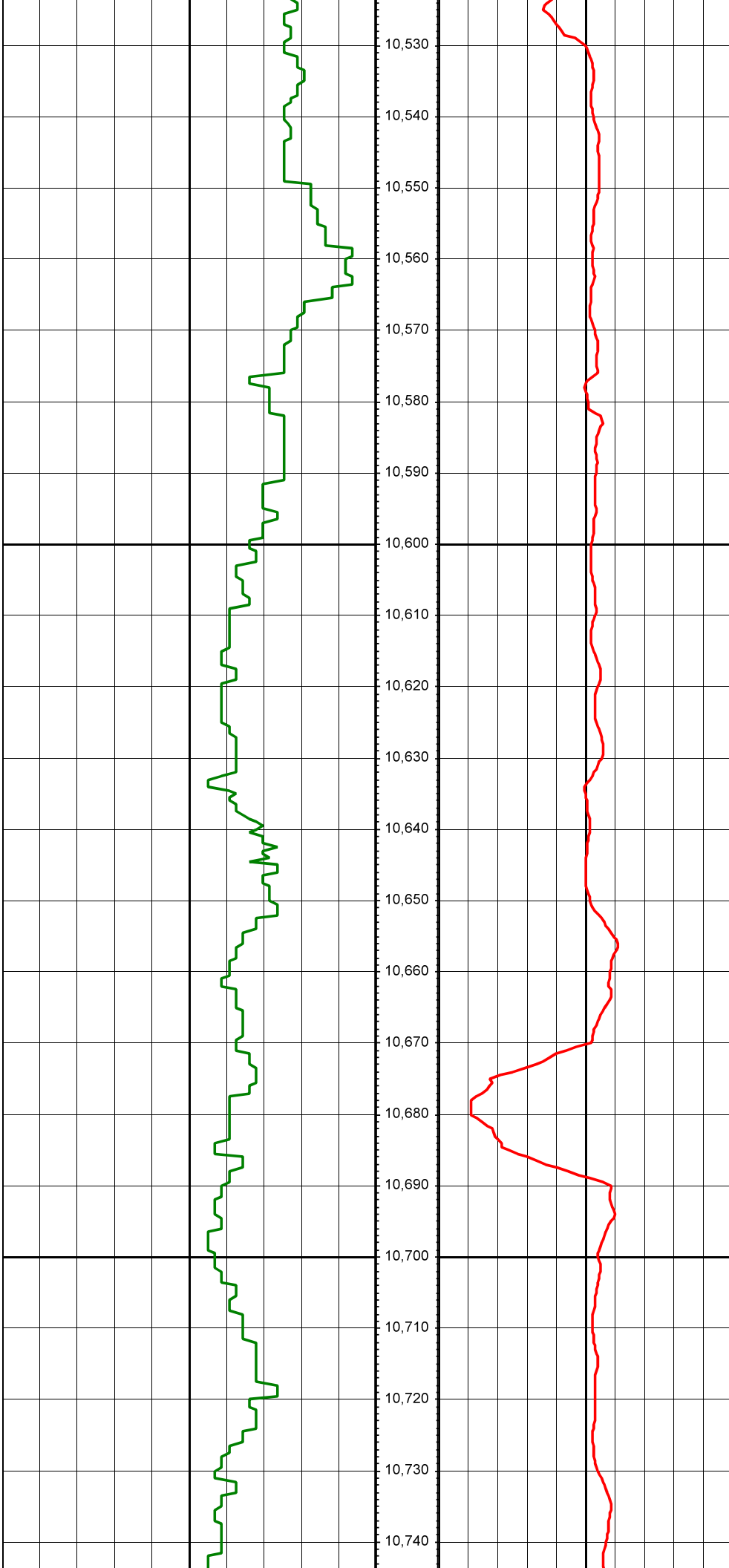
MD: 10150.00 INC: 89.90 AZ: 359.40

MD: 10244.00 INC: 90.10 AZ: 359.30



MD: 10339.00 INC: 89.40 AZ: 0.90

MD: 10433.00 INC: 89.50 AZ: 0.30



MD: 10528.00 INC: 89.10 AZ: 0.10

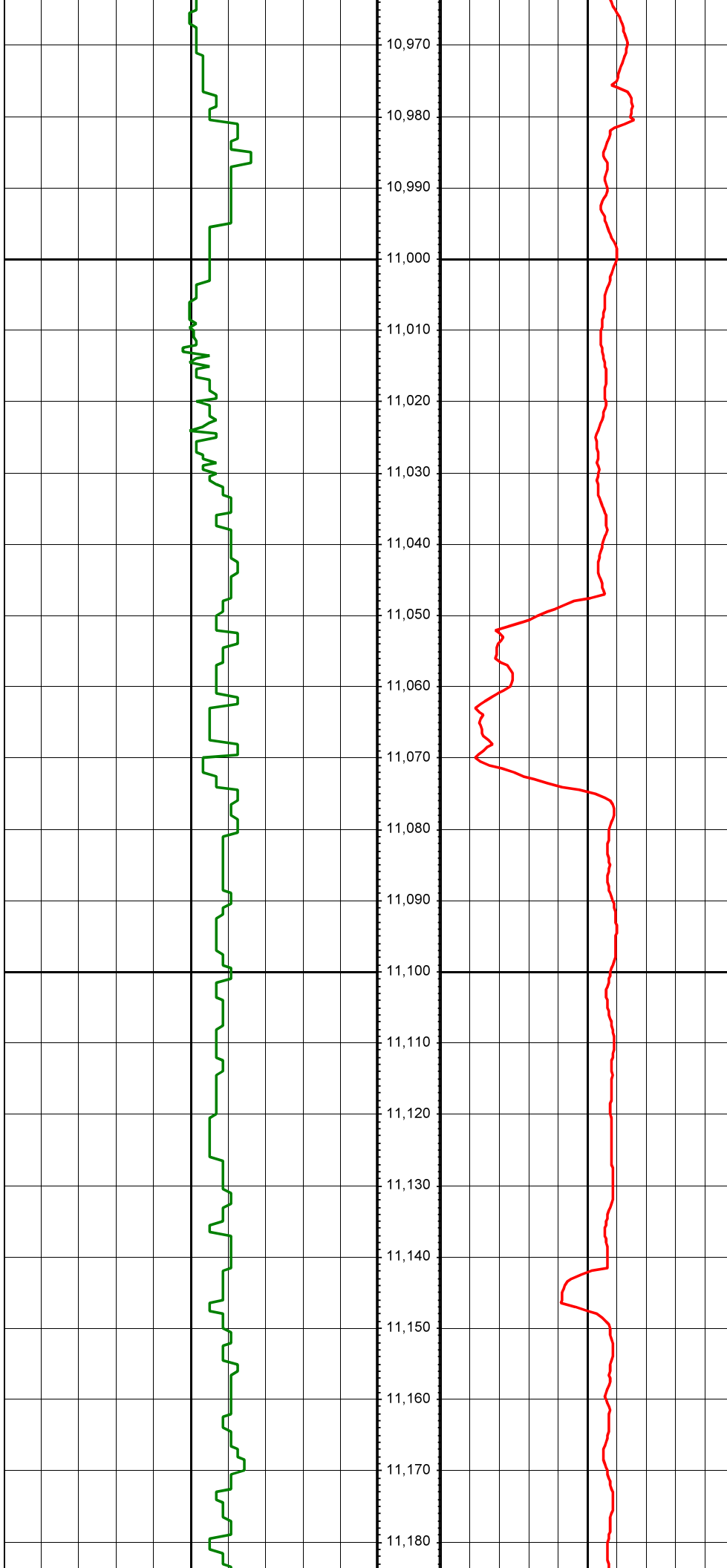
MD: 10622.00 INC: 88.80 AZ: 0.40

MD: 10717.00 INC: 89.10 AZ: 0.10



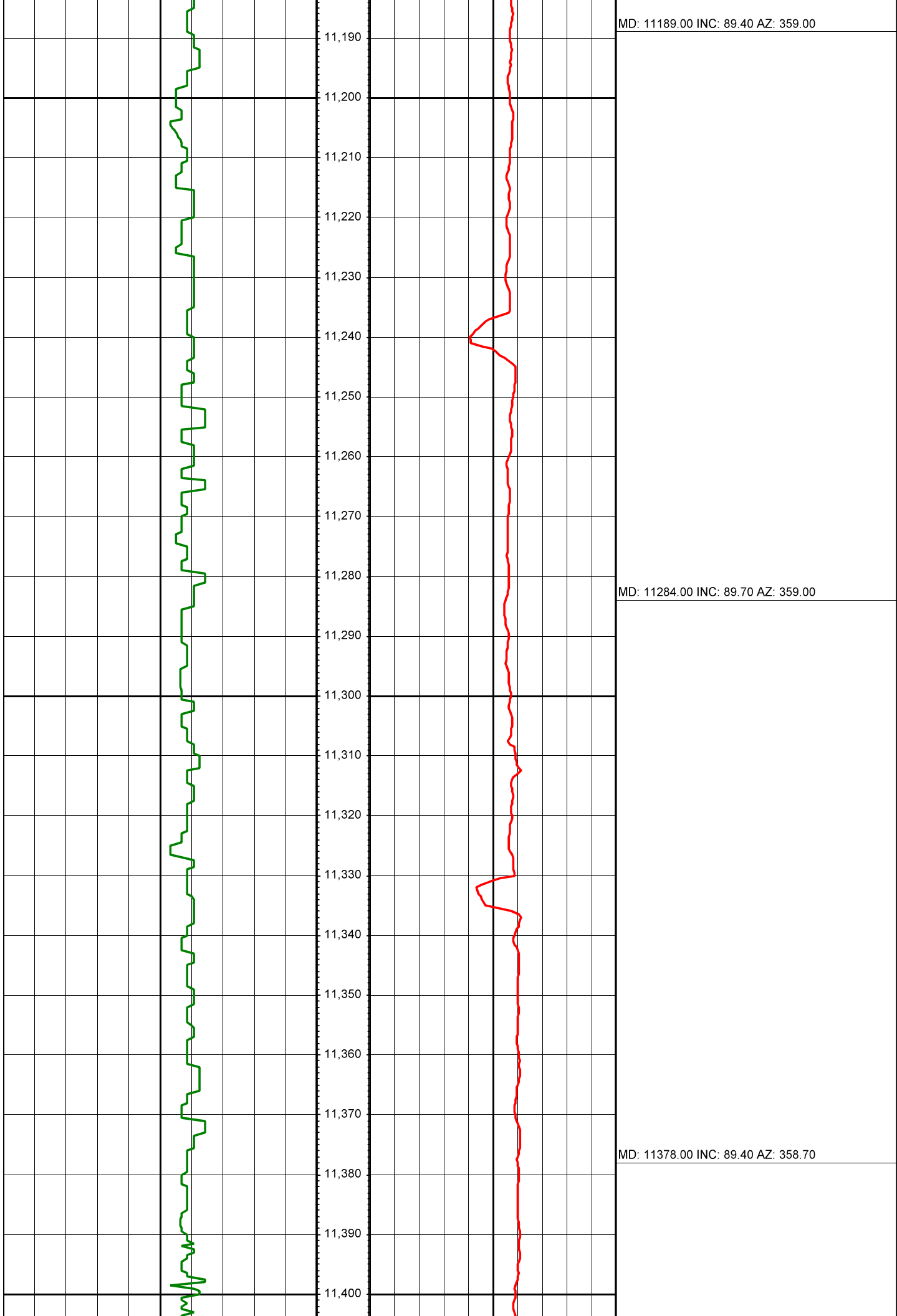
MD: 10811.00 INC: 88.90 AZ: 0.30

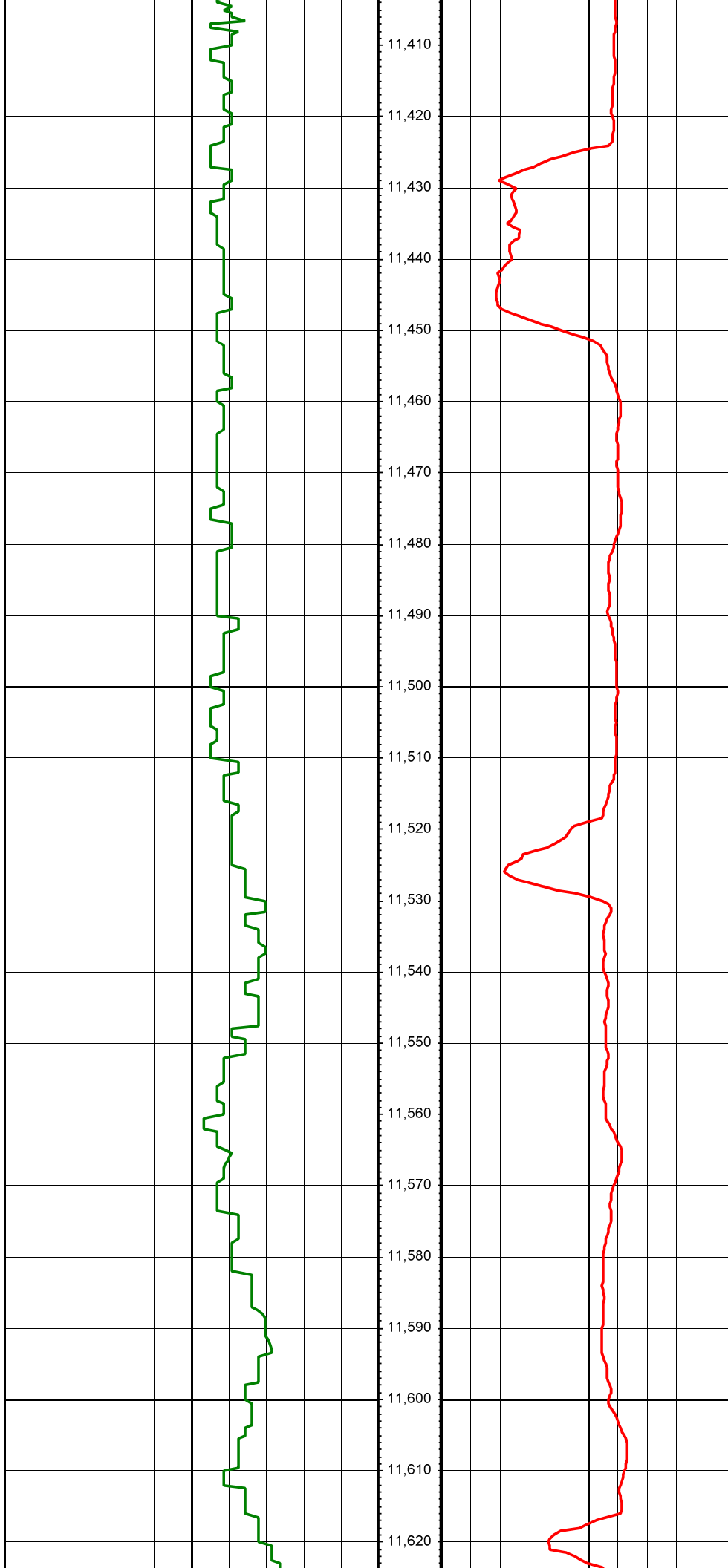
MD: 10906.00 INC: 90.20 AZ: 359.40



MD: 11000.00 INC: 90.70 AZ: 359.30

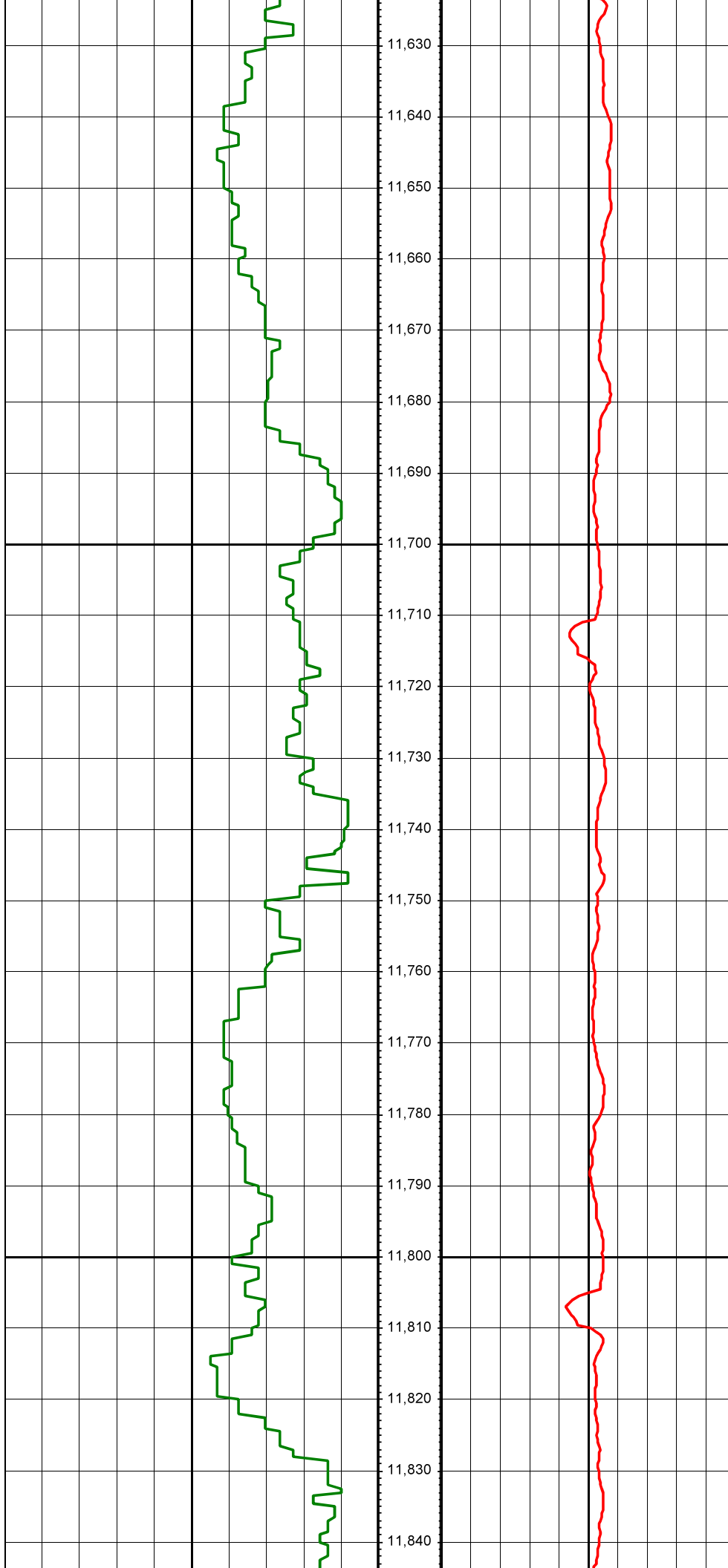
MD: 11095.00 INC: 89.70 AZ: 359.10





MD: 11473.00 INC: 89.20 AZ: 360.00

MD: 11568.00 INC: 89.70 AZ: 0.30



11,630

11,640

11,650

11,660

11,670

11,680

11,690

11,700

11,710

11,720

11,730

11,740

11,750

11,760

11,770

11,780

11,790

11,800

11,810

11,820

11,830

11,840

MD: 11662.00 INC: 89.80 AZ: 0.10

MD: 11756.00 INC: 90.20 AZ: 360.00



