

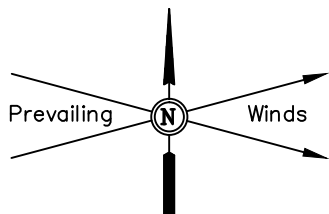
BILL BARRETT CORPORATION

LOCATION DRAWING FOR

ANSCHUTZ WINDMILL 10-34H EXT
SECTION 28, T5N, R62W, 6th P.M.
201' FSL 950' FEL

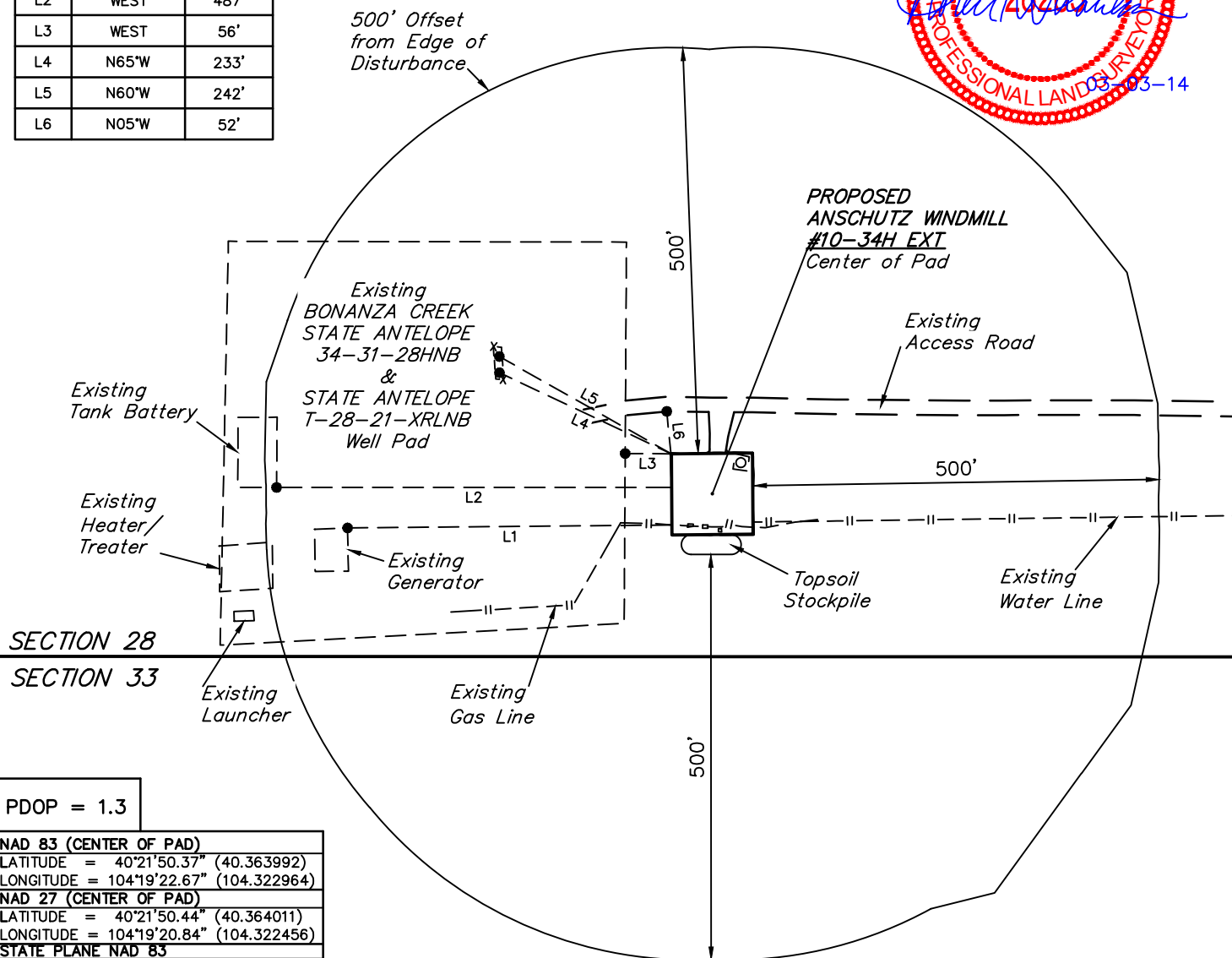
FIGURE #4

SCALE: 1" = 200'
DATE SURVEYED: 02-03-14
SURVEYED BY: ZANE BULLARD
DATE DRAWN: 02-24-14
DRAWN BY: J.W.



LINE TABLE

LINE	DIRECTION	LENGTH
L1	S89°W	400'
L2	WEST	487'
L3	WEST	56'
L4	N65°W	233'
L5	N60°W	242'
L6	N05°W	52'



PDOP = 1.3

NAD 83 (CENTER OF PAD)

LATITUDE = 40°21'50.37" (40.363992)
LONGITUDE = 104°19'22.67" (104.322964)

NAD 27 (CENTER OF PAD)

LATITUDE = 40°21'50.44" (40.364011)
LONGITUDE = 104°19'20.84" (104.322456)

STATE PLANE NAD 83

N: 1377619.96 E: 3327981.59

STATE PLANE NAD 27

N: 377621.87 E: 2328131.63

PLANT COMMUNITY

- ☐ DISTURBED GRASSLAND
- ☐ NATIVE GRASSLAND
- ☒ SHRUB LAND
- ☐ PLAINS RIPARIAN
- ☐ MOUNTAIN RIPARIAN
- ☐ FOREST LAND
- ☐ WETLANDS AQUATIC
- ☐ ALPINE
- ☐ OTHER (Describe):

CURRENT LAND USE

- CROP LAND: ☐ IRRIGATED ☐ DRY LAND ☐ IMPROVED PASTURE ☐ HAY MEADOW ☐ CRP
NON-CROP LAND: ☒ RANGELAND ☐ TIMBER ☐ RECREATIONAL ☐ OTHER (Describe)
SUBDIVIDED: ☐ INDUSTRIAL ☐ COMMERCIAL ☐ RESIDENTIAL

FUTURE LAND USE

- CROP LAND: ☐ IRRIGATED ☐ DRY LAND ☐ IMPROVED PASTURE ☐ HAY MEADOW ☐ CRP
NON-CROP LAND: ☐ RANGELAND ☐ TIMBER ☐ RECREATIONAL ☐ OTHER (Describe)
SUBDIVIDED: ☐ INDUSTRIAL ☐ COMMERCIAL ☐ RESIDENTIAL

UINTAH ENGINEERING & LAND SURVEYING
85 So. 200 East * Vernal, Utah 84078 * (435) 789-1017