

LEGEND:

 PROPOSED LOCATION



BILL BARRETT CORPORATION

ANSCHUTZ WINDMILL 10-34H EXT
SECTION 28, T5N, R62W, 6th P.M.
201' FSL 950' FEL



Utah Engineering & Land Surveying
 85 South 200 East Vernal, Utah 84078
 (435) 789-1017 * FAX (435) 789-1813

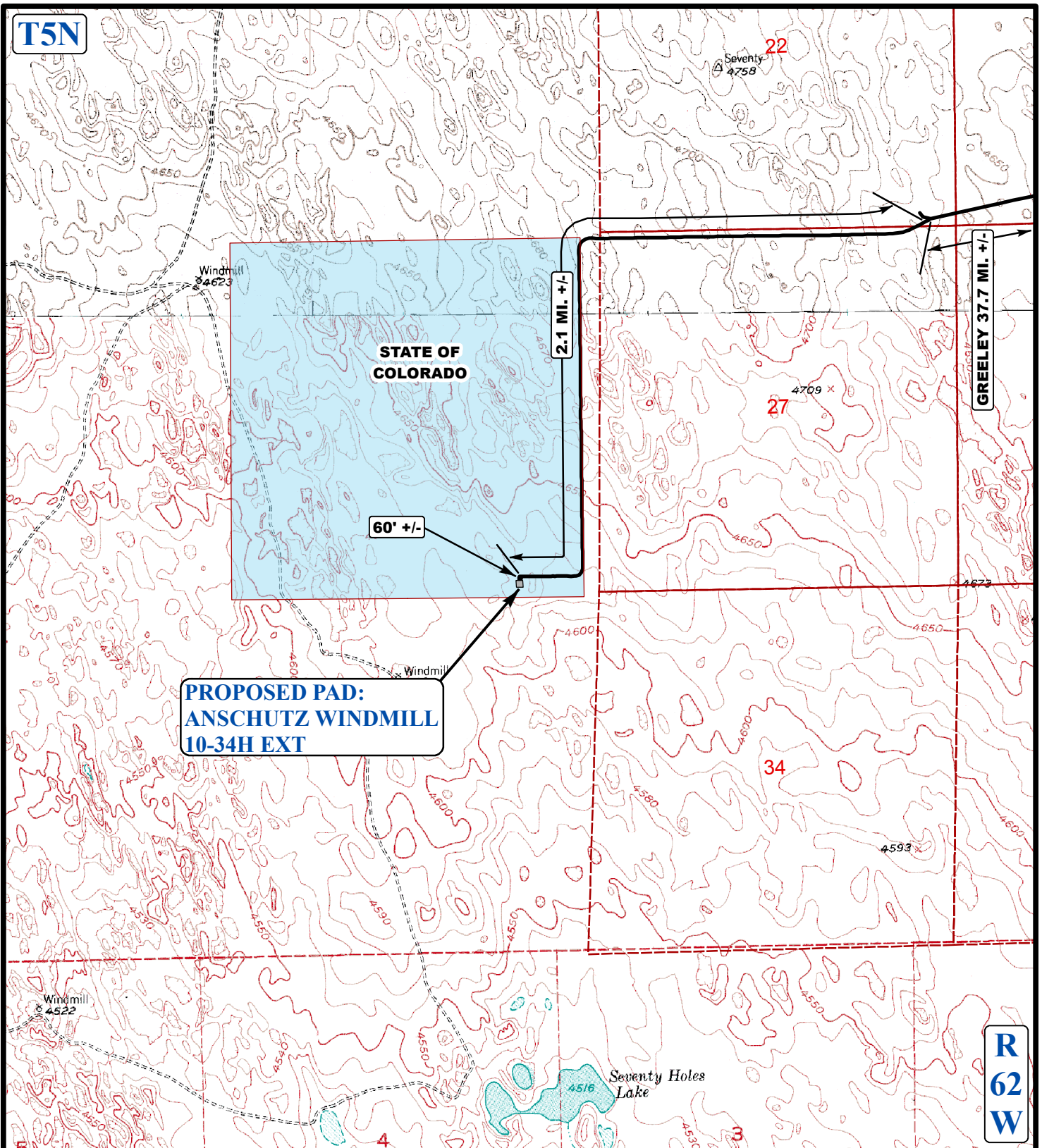
ACCESS ROAD
MAP

02 **20** **14**
 MONTH DAY YEAR

SCALE: 1:100,000 DRAWN BY: J.L.G. REVISED: 00-00-00



T5N



LEGEND:

————— EXISTING ROADS



BILL BARRETT CORPORATION

ANSCHUTZ WINDMILL 10-34H EXT
SECTION 28, T5N, R62W, 6th P.M.
201' FSL 950' FEL



Uintah Engineering & Land Surveying
85 South 200 East Vernal, Utah 84078
(435) 789-1017 * FAX (435) 789-1813

ACCESS ROAD
MAP

02 **20** **14**
MONTH DAY YEAR

SCALE: 1" = 2000' DRAWN BY: J.L.G. REVISED: 00-00-00

