

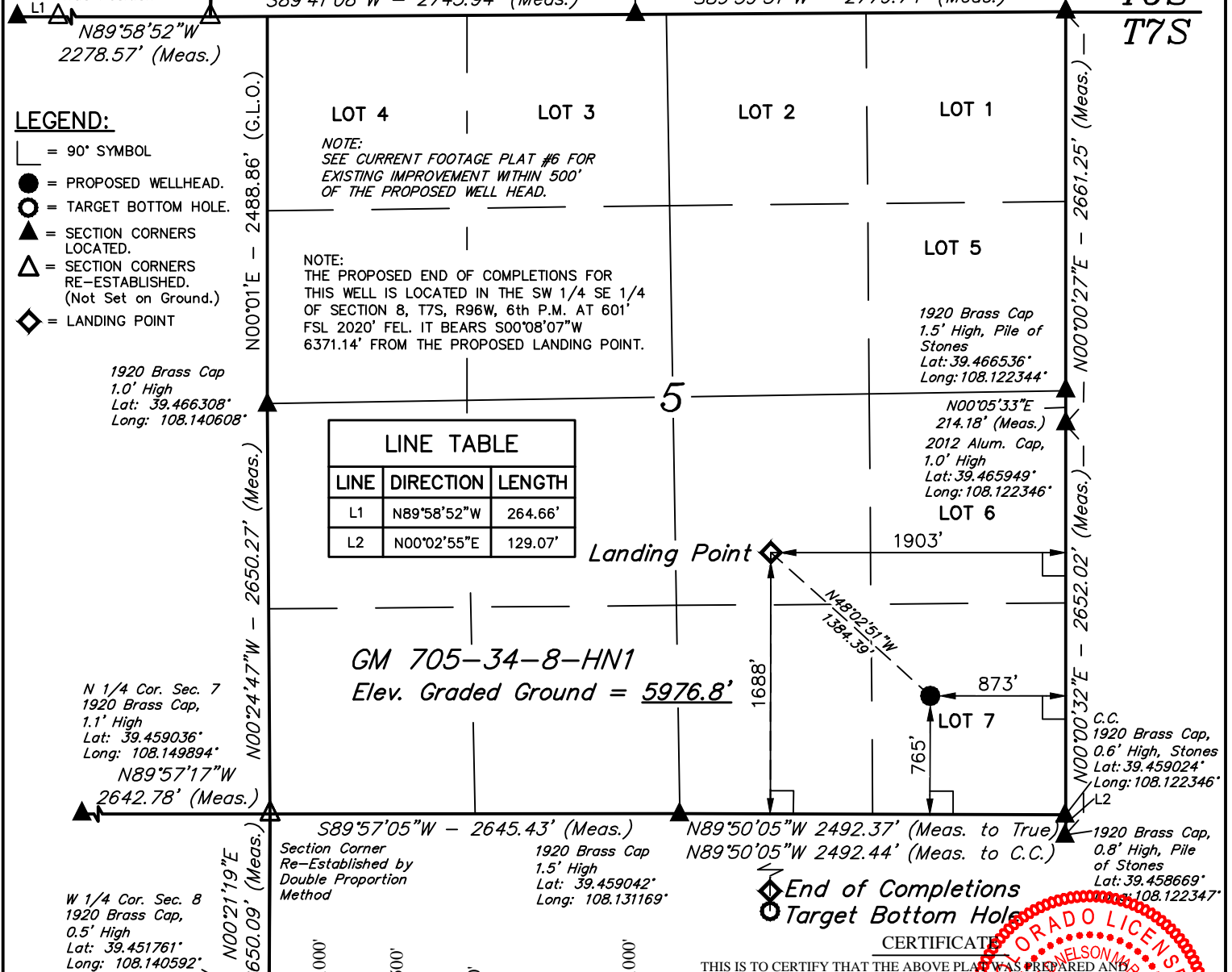
T7S, R96W, 6th P.M.

W.C. 1912 Brass
Cap, 0.7' High
Lat: 39.473161°
Long: 108.150919°
True Position

Section Corner
Re-Established by
Single Proportion
Method (Not Set)

1912 Brass Cap
0.9' High
Lat: 39.473206°
Long: 108.132189°

1912 Brass Cap
1.4' High, Pile of
Stones, Steel Rod
Lat: 39.473253°
Long: 108.122347°



PDOP = 1.3

| NAD 83 (LANDING POINT) | NAD 83 (SURFACE LOCATION) |
|--|--|
| LATITUDE = 39°27'49.22" (39.463672) | LATITUDE = 39°27'40.07" (39.461131) |
| LONGITUDE = 108°07'44.70" (108.129083) | LONGITUDE = 108°07'31.58" (108.125439) |
| STATE PLANE NAD 83 COLO. CENT. | STATE PLANE NAD 83 COLO. CENT. |
| N: 1604511.24 E: 2257833.90 | N: 1603556.89 E: 2258836.15 |

THIS IS TO CERTIFY THAT THE ABOVE PLAT WAS PREPARED AND LOCATION AS SHOWN WAS STAKED ON THE GROUND FROM FIELD NOTES OF ACTUAL SURVEYS MADE BY ME OR UNDER MY SUPERVISION AND THAT THE SAME ARE TRUE AND CORRECT TO THE BEST OF MY KNOWLEDGE AND BELIEF.

CERTIFICATE

REGISTERED LAND SURVEYOR
REGISTRATION NO. 10180
STATE OF COLORADO

PLAT #1

BASIS OF BEARINGS
BASIS OF BEARINGS IS A G.P.S. OBSERVATION

BASIS OF ELEVATION

SPOT ELEVATION AT THE NORTHWEST CORNER OF SECTION 30, T5S, R95W, 6th P.M., TAKEN FROM THE FORKED GULCH, QUADRANGLE, COLORADO, GARFIELD COUNTY, 7.5 MINUTE QUAD. (TOPOGRAPHIC MAP) PUBLISHED BY THE UNITED STATES DEPARTMENT OF THE INTERIOR, GEOLOGICAL SURVEY. SAID ELEVATION IS MARKED AS BEING 5966 FEET.

WPX Energy Rocky Mountain, LLC

GM 705-34-8-HN1 (SURFACE LOCATION)
LOT 7, SECTION 5, T7S, R96W, 6th P.M.
GARFIELD COUNTY, COLORADO

| | |
|--------------------------------|------------------------|
| SURVEYED BY: BRIAN BAKER, J.B. | DATE: 05-08-13 |
| DRAWN BY: M.D. | DATE DRAWN: 07-06-14 |
| SCALE: 1" = 1000' | REVISED: 10-10-14 M.D. |

WELL LOCATION PLAT



UELS, LLC
Corporate Office * 85 South 200 East
Vernal, UT 84078 * (435) 789-1017



W 1/4 Cor. Sec. 5
1920 Brass Cap, 1.0' High
Lat: 39.466308°
Long: 108.140608°

T7S, R96W, 6th P.M.

Landing Point

C.C.
1920 Brass Cap,
0.6' High, Stones
Lat: 39.459024°
Long: 108.122346°

N 1/4 Cor. Sec. 7
1920 Brass Cap,
1.1' High
Lat: 39.459036°
Long: 108.149894°

SW Cor. Sec. 4
1920 Brass Cap,
0.8' High, Pile
of Stones
Lat: 39.458669°
Long: 108.122347°

N89°57'17"W
2642.78' (Meas.)

S89°57'05"W - 2645.43' (Meas.)

N89°50'05"W 2492.44' (Meas. to C.C.)
N89°50'05"W 2492.37' (Meas. to True)

S89°40'28"W
2066.48' (Meas.)

Section Corner
Re-Established by
Double Proportion
Method

1920 Brass Cap
1.5' High
Lat: 39.459042°
Long: 108.131169°

NW Cor. Sec. 9
C.C. 1920 Brass Cap,
1.0' High, Rebar
Lat: 39.458669°
Long: 108.121936°

LOT 1

S 1/4 Cor. Sec. 4
1920 Brass Cap,
1.5' High,
Pile of Stones,
#17492
Lat: 39.458703°
Long: 108.115029°

LINE TABLE

| LINE | DIRECTION | LENGTH |
|------|-------------|---------|
| L1 | S00°08'07"W | 373.71' |
| L2 | N00°02'55"E | 129.07' |
| L3 | N89°51'16"W | 115.68' |
| L4 | N01°59'39"W | 49.05' |

1920 Brass Cap
0.5' High
Lat: 39.451761°
Long: 108.140592°

NOTE:
THE PROPOSED END OF COMPLETIONS
BEARS S00°08'07"W 6371.14' FROM THE
PROPOSED LANDING POINT WHICH IS
LOCATED IN THE NW 1/4 SE 1/4 OF
SECTION 5, T7S, R96W, 6th P.M. AT 1688'
FSL 1903' FEL.

End of Completions

1920 Brass Cap
1.0' High
Lat: 39.444578°
Long: 108.140586°

1920 Brass Cap,
0.1' High
Lat: 39.444567°
Long: 108.131325°

SW Cor. Sec. 9
1920 Brass Cap,
0.1' High
Lat: 39.444570°
Long: 108.121987°

SE Cor. Sec. 8
Brass Cap,
Lat: 39.444436°
Long: 108.121981°

LEGEND:

- 90° SYMBOL
- PROPOSED WELLHEAD.
- TARGET BOTTOM HOLE.
- SECTION CORNERS LOCATED.
- SECTION CORNERS RE-ESTABLISHED. (Not Set on Ground.)
- LANDING POINT



| NAD 83 (END OF COMPLETIONS) | NAD 83 (TARGET BOTTOM HOLE) |
|--|--|
| LATITUDE = 39°26'46.27" (39.446186) | LATITUDE = 39°26'42.57" (39.445158) |
| LONGITUDE = 108°07'44.88" (108.129133) | LONGITUDE = 108°07'44.89" (108.129136) |
| STATE PLANE NAD 83 COLO. CENT. | STATE PLANE NAD 83 COLO. CENT. |
| N: 1598145.22 E: 2257636.01 | N: 1597771.81 E: 2257624.41 |

BASIS OF BEARINGS
BASIS OF BEARINGS IS A G.P.S. OBSERVATION

BASIS OF ELEVATION

SPOT ELEVATION AT THE NORTHWEST CORNER OF SECTION 30, T5S, R95W, 6th P.M., TAKEN FROM THE FORKED GULCH, QUADRANGLE, COLORADO, GARFIELD COUNTY, 7.5 MINUTE QUAD. (TOPOGRAPHIC MAP) PUBLISHED BY THE UNITED STATES DEPARTMENT OF THE INTERIOR, GEOLOGICAL SURVEY. SAID ELEVATION IS MARKED AS BEING 5966 FEET.

CERTIFICATE
THIS IS TO CERTIFY THAT THE ABOVE PLAT WAS PREPARED AND LOCATION AS SHOWN WAS STAKED ON THE GROUND FROM FIELD NOTES OF ACTUAL SURVEYS MADE BY ME OR UNDER MY SUPERVISION AND THAT THE SAME ARE TRUE AND CORRECT TO THE BEST OF MY KNOWLEDGE AND BELIEF.

PLAT #1

REGISTERED LAND SURVEYOR
REGISTRATION NO. 10180
STATE OF COLORADO 10-10-14

WPX Energy Rocky Mountain, LLC

GM 705-34-8-HN1 (TARGET BOTTOM HOLE)
LOT 7, SECTION 5, T7S, R96W, 6th P.M.
GARFIELD COUNTY, COLORADO

| | |
|--------------------------------|------------------------|
| SURVEYED BY: BRIAN BAKER, J.B. | DATE: 05-08-13 |
| DRAWN BY: M.D. | DATE DRAWN: 07-06-14 |
| SCALE: 1" = 1000' | REVISED: 10-10-14 M.D. |

WELL LOCATION PLAT



UELS, LLC
Corporate Office * 85 South 200 East
Vernal, UT 84078 * (435) 789-1017