

Location:	COLORADO	Slot:	SLOT#35 BENSON FARMS 23N-19HZ (737'FSL & 71'FEL, SEC.23)
Field:	WELD COUNTY (KERR MCGEE)	Well:	BENSON FARMS 23N-19HZ
Facility:	SEC.23-T3N-R68W	Wellbore:	BENSON FARMS 23N-19HZ PWB

Plot reference wellpath is BENSON FARMS 23N-19HZ (REV-B.1) PWF

True vertical depths are referenced to XTREME 23 (16KB) (RKB)

Measured depths are referenced to XTREME 23 (16KB) (RKB)

XTREME 23 (16KB) (RKB) to Mean Sea Level: 4976 feet

Mean Sea Level to Mud line (At Slot: SLOT#35 BENSON FARMS 23N-19HZ (737'FSL & 71'FEL, SEC.23)): 0 feet

Coordinates are in feet referenced to Slot

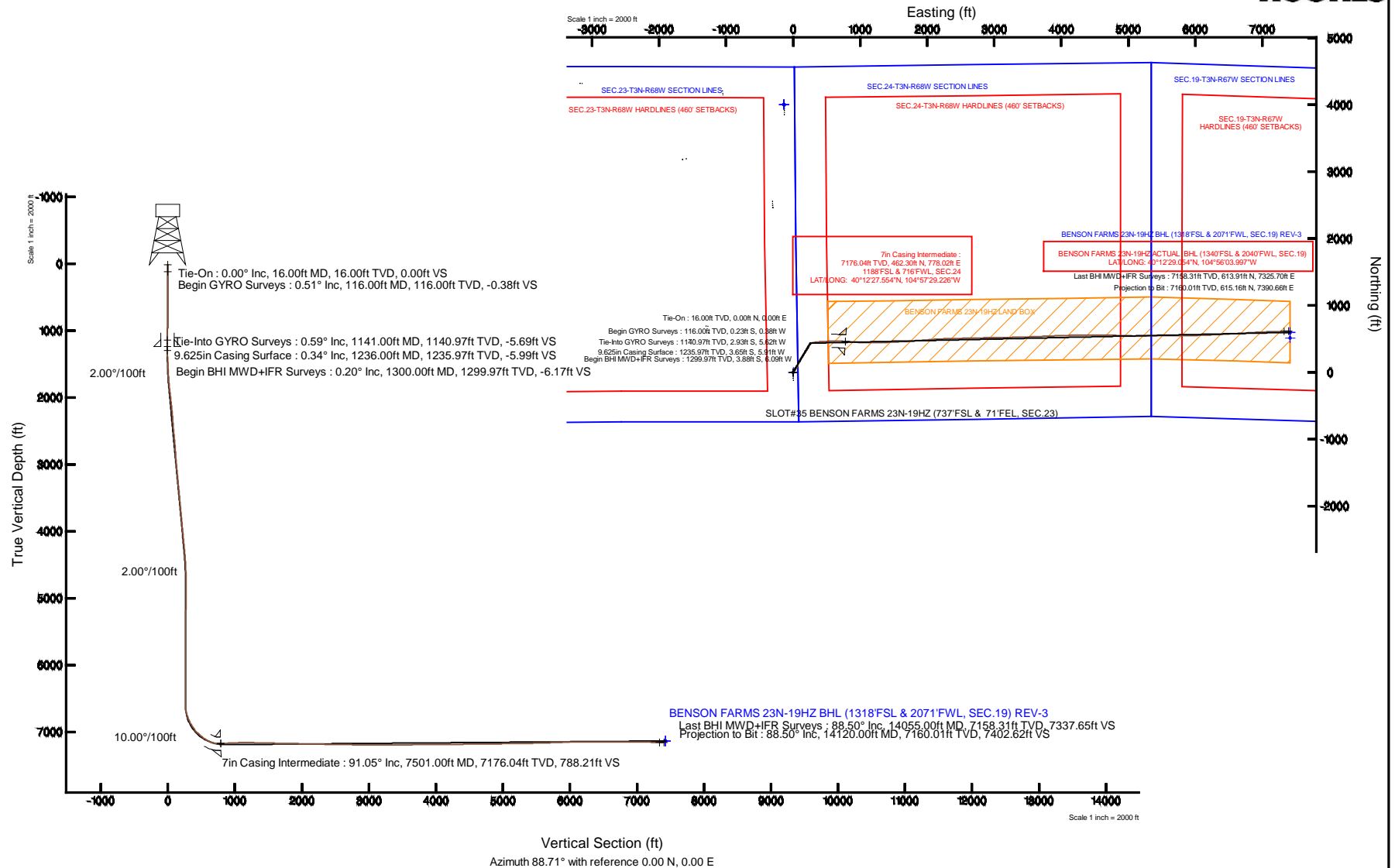
Grid System: NAD83 / Lambert Colorado SP, Northern Zone (501), US feet

	North Reference: True north
--	-----------------------------

Scale: True distance

Depths are in feet

Created by: precain on 24/Oct/2014



Actual Wellpath Report

BENSON FARMS 23N-19HZ AWP

Page 1 of 7

REFERENCE WELLPATH IDENTIFICATION			
Operator	KERR-MCGEE OIL & GAS ONSHORE LP	Slot	SLOT#35 BENSON FARMS 23N-19HZ (737'FSL & 71'FEL, SEC.23)
Area	COLORADO	Well	BENSON FARMS 23N-19HZ
Field	WELD COUNTY (KERR MCGEE)	Wellbore	BENSON FARMS 23N-19HZ AWB
Facility	SEC.23-T3N-R68W		

REPORT SETUP INFORMATION			
Projection System	NAD83 / Lambert Colorado SP, Northern Zone (501), US feet	Software System	WellArchitect® 4.0.0
North Reference	True	User	Precain
Scale	0.999957	Report Generated	24/Oct/2014 at 11:19
Convergence at slot	n/a	Database/Source file	WellArchitectDB/BENSON_FARMS_23N-19HZ_AWB.xml

WELLPATH LOCATION						
	Local coordinates		Grid coordinates		Geographic coordinates	
	North[ft]	East[ft]	Easting[US ft]	Northing[US ft]	Latitude	Longitude
Slot Location	-4322.22	3155.21	3150571.72	1318486.11	40°12'22.986"N	104°57'39.254"W
Facility Reference Pt			3147390.98	1322789.28	40°13'05.700"N	104°58'19.920"W
Field Reference Pt			3197771.84	1268891.29	40°04'09.600"N	104°47'36.000"W

WELLPATH DATUM			
Calculation method	Minimum curvature	XTREME 23 (16'KB) (RKB) to Facility Vertical Datum	4976.00ft
Horizontal Reference Pt	Slot	XTREME 23 (16'KB) (RKB) to Mean Sea Level	4976.00ft
Vertical Reference Pt	XTREME 23 (16'KB) (RKB)	XTREME 23 (16'KB) (RKB) to Mud Line at Slot (SLOT#35 BENSON FARMS 23N-19HZ (737'FSL & 71'FEL, SEC.23))	4976.00ft
MD Reference Pt	XTREME 23 (16'KB) (RKB)	Section Origin	N 0.00, E 0.00 ft
Field Vertical Reference	Mean Sea Level	Section Azimuth	88.71°

Actual Wellpath Report

BENSON FARMS 23N-19HZ AWP

Page 2 of 7

REFERENCE WELLPATH IDENTIFICATION			
Operator	KERR-MCGEE OIL & GAS ONSHORE LP	Slot	SLOT#35 BENSON FARMS 23N-19HZ (737'FSL & 71'FEL, SEC.23)
Area	COLORADO	Well	BENSON FARMS 23N-19HZ
Field	WELD COUNTY (KERR MCGEE)	Wellbore	BENSON FARMS 23N-19HZ AWB
Facility	SEC.23-T3N-R68W		

WELLPATH DATA (137 stations) † = interpolated/extrapolated station

MD [ft]	Inclination [°]	Azimuth [°]	TVD [ft]	Vert Sect [ft]	North [ft]	East [ft]	Latitude	Longitude	DLS [°/100ft]	Comments
0.00†	0.000	238.390	0.00	0.00	0.00	0.00	40°12'22.986"N	104°57'39.254"W	0.00	
16.00	0.000	238.390	16.00	0.00	0.00	0.00	40°12'22.986"N	104°57'39.254"W	0.00	Tie-On
116.00	0.510	238.390	116.00	-0.38	-0.23	-0.38	40°12'22.984"N	104°57'39.259"W	0.51	Begin GYRO Surveys
216.00	0.240	314.390	216.00	-0.91	-0.32	-0.91	40°12'22.983"N	104°57'39.266"W	0.51	
316.00	0.170	183.140	316.00	-1.07	-0.32	-1.07	40°12'22.983"N	104°57'39.268"W	0.37	
416.00	0.470	252.730	416.00	-1.48	-0.59	-1.47	40°12'22.980"N	104°57'39.273"W	0.44	
516.00	0.430	275.230	515.99	-2.25	-0.68	-2.23	40°12'22.979"N	104°57'39.283"W	0.18	
616.00	0.060	214.260	615.99	-2.65	-0.69	-2.63	40°12'22.979"N	104°57'39.288"W	0.40	
716.00	0.670	216.440	715.99	-3.04	-1.20	-3.01	40°12'22.974"N	104°57'39.293"W	0.61	
816.00	0.620	249.200	815.98	-3.90	-1.86	-3.86	40°12'22.968"N	104°57'39.304"W	0.37	
916.00	0.560	285.190	915.98	-4.88	-1.93	-4.84	40°12'22.967"N	104°57'39.316"W	0.37	
1016.00	0.180	193.850	1015.98	-5.39	-1.95	-5.35	40°12'22.967"N	104°57'39.323"W	0.59	
1116.00	0.670	195.710	1115.97	-5.60	-2.67	-5.55	40°12'22.960"N	104°57'39.325"W	0.49	
1141.00	0.590	197.150	1140.97	-5.69	-2.93	-5.62	40°12'22.957"N	104°57'39.326"W	0.33	Tie-Into GYRO Surveys
1300.00	0.200	233.800	1299.97	-6.17	-3.88	-6.09	40°12'22.948"N	104°57'39.332"W	0.28	Begin BHI MWD+IFR Surveys
1488.00	4.600	37.200	1487.77	-1.75	1.94	-1.79	40°12'23.005"N	104°57'39.277"W	2.55	
1583.00	5.300	36.400	1582.42	3.30	8.50	3.11	40°12'23.070"N	104°57'39.214"W	0.74	
1674.00	5.400	42.200	1673.02	8.82	15.06	8.48	40°12'23.135"N	104°57'39.145"W	0.60	
1764.00	6.600	41.300	1762.53	15.24	22.08	14.74	40°12'23.204"N	104°57'39.064"W	1.34	
1857.00	9.100	37.800	1854.65	23.49	31.91	22.78	40°12'23.301"N	104°57'38.960"W	2.74	
1949.00	10.400	40.900	1945.32	33.65	43.93	32.68	40°12'23.420"N	104°57'38.833"W	1.52	
2041.00	10.200	39.400	2035.84	44.54	56.51	43.28	40°12'23.544"N	104°57'38.696"W	0.36	
2133.00	11.800	29.400	2126.15	54.65	71.00	53.07	40°12'23.688"N	104°57'38.570"W	2.70	
2225.00	11.800	24.200	2216.21	63.50	87.77	61.55	40°12'23.853"N	104°57'38.461"W	1.16	
2317.00	12.000	21.400	2306.23	71.24	105.26	68.89	40°12'24.026"N	104°57'38.366"W	0.66	
2410.00	12.100	18.000	2397.19	78.19	123.53	75.43	40°12'24.207"N	104°57'38.282"W	0.77	
2503.00	11.500	24.700	2488.22	85.47	141.22	82.32	40°12'24.382"N	104°57'38.193"W	1.61	
2595.00	10.200	29.900	2578.58	93.71	156.62	90.21	40°12'24.534"N	104°57'38.091"W	1.77	
2688.00	10.300	27.800	2670.10	102.02	171.11	98.19	40°12'24.677"N	104°57'37.988"W	0.42	
2779.00	8.700	27.500	2759.85	109.29	184.41	105.17	40°12'24.808"N	104°57'37.899"W	1.76	
2870.00	8.700	23.900	2849.80	115.53	196.81	111.13	40°12'24.931"N	104°57'37.822"W	0.60	
2963.00	8.300	32.200	2941.78	122.23	208.92	117.56	40°12'25.051"N	104°57'37.739"W	1.39	
3055.00	9.600	37.200	3032.66	130.67	220.65	125.74	40°12'25.166"N	104°57'37.633"W	1.65	
3148.00	9.500	34.200	3124.37	139.95	233.18	134.74	40°12'25.290"N	104°57'37.517"W	0.55	
3240.00	8.900	33.300	3215.19	148.39	245.40	142.91	40°12'25.411"N	104°57'37.412"W	0.67	
3332.00	8.800	36.700	3306.09	156.77	256.99	151.03	40°12'25.526"N	104°57'37.307"W	0.58	
3422.00	9.600	32.500	3394.94	165.18	268.84	159.17	40°12'25.643"N	104°57'37.202"W	1.16	
3507.00	9.000	30.400	3478.82	172.61	280.56	166.35	40°12'25.758"N	104°57'37.110"W	0.81	
3594.00	8.600	32.200	3564.79	179.77	291.93	173.26	40°12'25.871"N	104°57'37.021"W	0.56	
3681.00	9.900	33.100	3650.66	187.59	303.70	180.81	40°12'25.987"N	104°57'36.924"W	1.50	
3766.00	9.700	32.700	3734.42	195.72	315.85	188.67	40°12'26.107"N	104°57'36.822"W	0.25	
3855.00	9.700	32.600	3822.15	204.09	328.47	196.76	40°12'26.232"N	104°57'36.718"W	0.02	
3944.00	9.000	31.300	3909.97	212.02	340.74	204.41	40°12'26.353"N	104°57'36.619"W	0.82	
4029.00	9.900	34.100	3993.81	219.83	352.47	211.96	40°12'26.469"N	104°57'36.522"W	1.19	
4114.00	9.100	32.700	4077.65	227.82	364.18	219.69	40°12'26.585"N	104°57'36.422"W	0.98	

Actual Wellpath Report

BENSON FARMS 23N-19HZ AWP

Page 3 of 7

REFERENCE WELLPATH IDENTIFICATION

Operator	KERR-MCGEE OIL & GAS ONSHORE LP	Slot	SLOT#35 BENSON FARMS 23N-19HZ (737'FSL & 71'FEL, SEC.23)
Area	COLORADO	Well	BENSON FARMS 23N-19HZ
Field	WELD COUNTY (KERR MCGEE)	Wellbore	BENSON FARMS 23N-19HZ AWB
Facility	SEC.23-T3N-R68W		

WELLPATH DATA (137 stations) † = interpolated/extrapolated station

MD [ft]	Inclination [°]	Azimuth [°]	TVD [ft]	Vert Sect [ft]	North [ft]	East [ft]	Latitude	Longitude	DLS [°/100ft]	Comments
4200.00	10.200	31.900	4162.43	235.79	376.36	227.39	40°12'26.705"N	104°57'36.323"W	1.29	
4285.00	10.400	29.800	4246.06	243.87	389.41	235.18	40°12'26.834"N	104°57'36.223"W	0.50	
4374.00	10.300	28.500	4333.61	251.97	403.38	242.97	40°12'26.972"N	104°57'36.122"W	0.29	
4458.00	8.300	30.000	4416.50	258.85	415.23	249.58	40°12'27.089"N	104°57'36.037"W	2.40	
4545.00	5.900	28.200	4502.83	264.32	424.61	254.84	40°12'27.182"N	104°57'35.969"W	2.77	
4632.00	4.100	31.000	4589.49	268.18	431.21	258.55	40°12'27.247"N	104°57'35.922"W	2.09	
4717.00	1.900	35.800	4674.37	270.65	434.96	260.94	40°12'27.284"N	104°57'35.891"W	2.60	
4806.00	0.600	154.400	4763.36	271.73	435.74	262.01	40°12'27.292"N	104°57'35.877"W	2.53	
5233.00	1.700	224.300	5190.28	268.13	429.19	258.55	40°12'27.227"N	104°57'35.922"W	0.37	
5318.00	0.400	1.800	5275.27	267.25	428.58	257.68	40°12'27.221"N	104°57'35.933"W	2.37	
5405.00	0.700	12.100	5362.26	267.39	429.41	257.80	40°12'27.229"N	104°57'35.931"W	0.36	
5577.00	0.600	15.100	5534.25	267.88	431.30	258.25	40°12'27.248"N	104°57'35.925"W	0.06	
5746.00	0.600	346.900	5703.24	267.95	433.02	258.28	40°12'27.265"N	104°57'35.925"W	0.17	
5916.00	0.400	353.100	5873.24	267.71	434.48	258.01	40°12'27.279"N	104°57'35.929"W	0.12	
6086.00	0.300	313.000	6043.23	267.33	435.37	257.61	40°12'27.288"N	104°57'35.934"W	0.15	
6257.00	0.300	250.500	6214.23	266.59	435.52	256.86	40°12'27.290"N	104°57'35.943"W	0.18	
6427.00	0.600	258.400	6384.23	265.29	435.20	255.57	40°12'27.287"N	104°57'35.960"W	0.18	
6514.00	0.900	270.800	6471.22	264.16	435.11	254.44	40°12'27.286"N	104°57'35.975"W	0.39	
6599.00	0.800	337.900	6556.21	263.28	435.67	253.55	40°12'27.291"N	104°57'35.986"W	1.11	
6685.00	2.400	72.300	6642.18	264.80	436.78	255.04	40°12'27.302"N	104°57'35.967"W	3.01	
6769.00	14.900	81.800	6725.07	277.25	438.86	267.46	40°12'27.323"N	104°57'35.807"W	14.93	
6854.00	23.600	79.000	6805.24	304.93	443.68	295.03	40°12'27.370"N	104°57'35.451"W	10.29	
6940.00	30.200	80.600	6881.89	343.35	450.50	333.31	40°12'27.438"N	104°57'34.958"W	7.72	
7025.00	36.100	84.800	6953.04	389.55	456.27	379.39	40°12'27.495"N	104°57'34.364"W	7.44	
7110.00	45.700	86.700	7017.21	445.06	460.30	434.82	40°12'27.535"N	104°57'33.650"W	11.39	
7195.00	51.800	86.200	7073.23	508.88	464.27	498.57	40°12'27.574"N	104°57'32.828"W	7.19	
7280.00	58.500	86.800	7121.77	578.55	468.51	568.16	40°12'27.616"N	104°57'31.931"W	7.90	
7365.00	69.000	91.700	7159.33	654.64	469.36	644.25	40°12'27.624"N	104°57'30.950"W	13.39	
7450.00	88.500	93.500	7175.84	737.41	465.55	727.12	40°12'27.586"N	104°57'29.882"W	23.03	
7501.00†	91.050	93.802	7176.04	788.21	462.30	778.02	40°12'27.554"N	104°57'29.226"W	5.04	7" Casing Point
7568.00	94.400	94.200	7172.85	854.84	457.63	844.77	40°12'27.508"N	104°57'28.366"W	5.04	
7661.00	93.000	93.300	7166.85	947.29	451.56	937.37	40°12'27.448"N	104°57'27.172"W	1.79	
7752.00	91.700	92.700	7163.12	1037.95	446.80	1028.17	40°12'27.401"N	104°57'26.002"W	1.57	
7843.00	90.600	90.900	7161.29	1128.80	443.95	1119.10	40°12'27.373"N	104°57'24.830"W	2.32	
7936.00	89.300	89.400	7161.37	1221.76	443.70	1212.10	40°12'27.370"N	104°57'23.632"W	2.13	
8029.00	88.500	88.200	7163.16	1314.74	445.65	1305.06	40°12'27.390"N	104°57'22.433"W	1.55	
8121.00	88.900	87.800	7165.25	1406.71	448.86	1396.98	40°12'27.421"N	104°57'21.249"W	0.61	
8213.00	88.200	87.200	7167.58	1498.66	452.87	1488.86	40°12'27.461"N	104°57'20.064"W	1.00	
8300.00	88.500	87.000	7170.08	1585.59	457.27	1575.71	40°12'27.504"N	104°57'18.945"W	0.41	
8390.00	89.000	87.200	7172.04	1675.53	461.82	1665.57	40°12'27.549"N	104°57'17.787"W	0.60	
8475.00	88.800	86.200	7173.68	1760.46	466.72	1750.42	40°12'27.597"N	104°57'16.693"W	1.20	
8561.00	89.400	86.000	7175.03	1846.36	472.56	1836.20	40°12'27.655"N	104°57'15.588"W	0.74	
8646.00	87.900	85.300	7177.03	1931.22	479.01	1920.93	40°12'27.719"N	104°57'14.496"W	1.95	
8731.00	87.800	85.100	7180.22	2016.00	486.12	2005.58	40°12'27.789"N	104°57'13.405"W	0.26	
8816.00	89.900	85.800	7181.92	2100.84	492.86	2090.29	40°12'27.856"N	104°57'12.313"W	2.60	

Actual Wellpath Report

BENSON FARMS 23N-19HZ AWP

Page 4 of 7

REFERENCE WELLPATH IDENTIFICATION			
Operator	KERR-MCGEE OIL & GAS ONSHORE LP	Slot	SLOT#35 BENSON FARMS 23N-19HZ (737'FSL & 71'FEL, SEC.23)
Area	COLORADO	Well	BENSON FARMS 23N-19HZ
Field	WELD COUNTY (KERR MCGEE)	Wellbore	BENSON FARMS 23N-19HZ AWP
Facility	SEC.23-T3N-R68W		

WELLPATH DATA (137 stations)

MD [ft]	Inclination [°]	Azimuth [°]	TVD [ft]	Vert Sect [ft]	North [ft]	East [ft]	Latitude	Longitude	DLS [°/100ft]	Comments
8901.00	89.400	86.900	7182.44	2185.76	498.27	2175.11	40°12'27.909"N	104°57'11.219"W	1.42	
8986.00	88.800	87.300	7183.78	2270.72	502.57	2259.99	40°12'27.951"N	104°57'10.125"W	0.85	
9071.00	88.700	88.900	7185.63	2355.69	505.39	2344.92	40°12'27.979"N	104°57'09.031"W	1.89	
9156.00	88.700	89.000	7187.56	2440.67	506.94	2429.88	40°12'27.994"N	104°57'07.936"W	0.12	
9241.00	89.100	88.600	7189.19	2525.65	508.72	2514.85	40°12'28.012"N	104°57'06.841"W	0.67	
9326.00	89.200	88.800	7190.45	2610.64	510.65	2599.82	40°12'28.031"N	104°57'05.745"W	0.26	
9411.00	89.200	88.600	7191.64	2695.63	512.58	2684.79	40°12'28.050"N	104°57'04.650"W	0.24	
9496.00	89.000	88.600	7192.98	2780.62	514.66	2769.75	40°12'28.070"N	104°57'03.555"W	0.24	
9581.00	88.600	88.000	7194.76	2865.60	517.18	2854.70	40°12'28.095"N	104°57'02.460"W	0.85	
9667.00	90.100	89.700	7195.73	2951.59	518.90	2940.67	40°12'28.112"N	104°57'01.352"W	2.64	
9751.00	90.200	89.500	7195.51	3035.58	519.49	3024.66	40°12'28.118"N	104°57'00.270"W	0.27	
9837.00	89.700	89.200	7195.59	3121.57	520.47	3110.66	40°12'28.127"N	104°56'59.161"W	0.68	
9922.00	89.700	88.400	7196.03	3206.57	522.25	3195.64	40°12'28.145"N	104°56'58.066"W	0.94	
10007.00	90.200	89.000	7196.11	3291.57	524.17	3280.62	40°12'28.164"N	104°56'56.971"W	0.92	
10092.00	90.600	88.500	7195.51	3376.57	526.03	3365.59	40°12'28.182"N	104°56'55.876"W	0.75	
10177.00	90.600	88.100	7194.62	3461.56	528.55	3450.55	40°12'28.207"N	104°56'54.781"W	0.47	
10263.00	90.500	87.300	7193.80	3547.54	532.00	3536.48	40°12'28.241"N	104°56'53.673"W	0.94	
10347.00	91.000	88.000	7192.70	3631.52	535.44	3620.40	40°12'28.275"N	104°56'52.591"W	1.02	
10433.00	91.600	87.900	7190.75	3717.49	538.52	3706.32	40°12'28.305"N	104°56'51.484"W	0.71	
10518.00	90.400	88.000	7189.26	3802.47	541.56	3791.25	40°12'28.335"N	104°56'50.389"W	1.42	
10603.00	90.500	87.500	7188.59	3887.45	544.90	3876.18	40°12'28.368"N	104°56'49.295"W	0.60	
10687.00	89.700	87.900	7188.45	3971.44	548.27	3960.11	40°12'28.401"N	104°56'48.213"W	1.06	
10857.00	90.700	88.500	7187.85	4141.43	553.61	4130.03	40°12'28.453"N	104°56'46.023"W	0.69	
11027.00	90.500	89.400	7186.07	4311.41	556.72	4299.99	40°12'28.484"N	104°56'43.832"W	0.54	
11198.00	91.100	90.200	7183.69	4482.36	557.32	4470.97	40°12'28.489"N	104°56'41.629"W	0.58	
11368.00	90.400	90.100	7181.46	4652.30	556.87	4640.95	40°12'28.485"N	104°56'39.438"W	0.42	
11538.00	90.500	92.000	7180.13	4822.14	553.76	4810.91	40°12'28.454"N	104°56'37.247"W	1.12	
11709.00	91.300	91.800	7177.44	4992.85	548.09	4981.79	40°12'28.397"N	104°56'35.045"W	0.48	
11794.00	91.400	91.300	7175.44	5077.73	545.79	5066.74	40°12'28.374"N	104°56'33.950"W	0.60	
11964.00	90.200	88.900	7173.06	5247.64	545.50	5236.71	40°12'28.371"N	104°56'31.759"W	1.58	
12049.00	90.400	89.500	7172.62	5332.64	546.68	5321.70	40°12'28.383"N	104°56'30.664"W	0.74	
12134.00	91.800	90.200	7170.99	5417.60	546.91	5406.68	40°12'28.385"N	104°56'29.568"W	1.84	
12304.00	91.400	89.800	7166.24	5587.49	546.91	5576.61	40°12'28.384"N	104°56'27.378"W	0.33	
12474.00	92.300	89.500	7160.75	5757.38	547.94	5746.52	40°12'28.394"N	104°56'25.188"W	0.56	
12560.00	92.500	89.200	7157.15	5843.30	548.92	5832.44	40°12'28.404"N	104°56'24.081"W	0.42	
12645.00	91.400	88.600	7154.26	5928.25	550.55	5917.37	40°12'28.420"N	104°56'22.986"W	1.47	
12731.00	91.600	88.500	7152.01	6014.22	552.72	6003.31	40°12'28.441"N	104°56'21.878"W	0.26	
12815.00	90.400	87.900	7150.54	6098.20	555.36	6087.26	40°12'28.467"N	104°56'20.797"W	1.60	
12900.00	91.000	87.800	7149.50	6183.18	558.55	6172.19	40°12'28.498"N	104°56'19.702"W	0.72	
12987.00	89.600	87.300	7149.05	6270.16	562.27	6259.11	40°12'28.535"N	104°56'18.582"W	1.71	
13165.00	89.700	86.800	7150.14	6448.08	571.43	6436.87	40°12'28.625"N	104°56'16.290"W	0.29	
13254.00	89.800	86.800	7150.52	6537.03	576.40	6525.73	40°12'28.673"N	104°56'15.145"W	0.11	
13426.00	90.400	86.600	7150.22	6708.93	586.30	6697.44	40°12'28.771"N	104°56'12.932"W	0.37	
13596.00	89.700	86.700	7150.07	6878.82	596.23	6867.15	40°12'28.869"N	104°56'10.744"W	0.42	
13766.00	89.000	87.500	7152.00	7048.73	604.83	7036.92	40°12'28.953"N	104°56'08.556"W	0.63	

Actual Wellpath Report

BENSON FARMS 23N-19HZ AWP

Page 5 of 7

REFERENCE WELLPATH IDENTIFICATION			
Operator	KERR-MCGEE OIL & GAS ONSHORE LP	Slot	SLOT#35 BENSON FARMS 23N-19HZ (737'FSL & 71'FEL, SEC.23)
Area	COLORADO	Well	BENSON FARMS 23N-19HZ
Field	WELD COUNTY (KERR MCGEE)	Wellbore	BENSON FARMS 23N-19HZ AWB
Facility	SEC.23-T3N-R68W		

WELLPATH DATA (137 stations)										
MD [ft]	Inclination [°]	Azimuth [°]	TVD [ft]	Vert Sect [ft]	North [ft]	East [ft]	Latitude	Longitude	DLS [°/100ft]	Comments
14055.00	88.500	88.900	7158.31	7337.65	613.91	7325.70	40°12'29.042"N	104°56'04.834"W	0.51	Last BHI MWD+IFR Surveys
14120.00	88.500	88.900	7160.01	7402.62	615.16	7390.66	40°12'29.054"N	104°56'03.997"W	0.00	Projection to Bit

HOLE & CASING SECTIONS - Ref Wellbore: BENSON FARMS 23N-19HZ AWB Ref Wellpath: BENSON FARMS 23N-19HZ AWP									
String/Diameter	Start MD [ft]	End MD [ft]	Interval [ft]	Start TVD [ft]	End TVD [ft]	Start N/S [ft]	Start E/W [ft]	End N/S [ft]	End E/W [ft]
13.5in Open Hole	16.00	1247.00	1231.00	16.00	1246.97	0.00	0.00	-3.70	-5.94
9.625in Casing Surface	16.00	1236.00	1220.00	16.00	1235.97	0.00	0.00	-3.65	-5.91
8.75in Open Hole	1247.00	7511.00	6264.00	1246.97	7175.81	-3.70	-5.94	461.63	787.99
7in Casing Intermediate	16.00	7501.00	7485.00	16.00	7176.04	0.00	0.00	462.30	778.02
6.125in Open Hole	7511.00	14120.00	6609.00	7175.81	7160.01	461.63	787.99	615.16	7390.66

REFERENCE WELLPATH IDENTIFICATION			
Operator	KERR-MCGEE OIL & GAS ONSHORE LP	Slot	SLOT#35 BENSON FARMS 23N-19HZ (737'FSL & 71'FEL, SEC.23)
Area	COLORADO	Well	BENSON FARMS 23N-19HZ
Field	WELD COUNTY (KERR MCGEE)	Wellbore	BENSON FARMS 23N-19HZ AWB
Facility	SEC.23-T3N-R68W		

TARGETS									
Name	MD [ft]	TVD [ft]	North [ft]	East [ft]	Grid East [US ft]	Grid North [US ft]	Latitude	Longitude	Shape
SEC.19-T3N-R67W HARDLINES (460' SETBACKS)		28.00	4005.85	-134.36	3150413.01	1322490.88	40°13'02.572"N	104°57'40.986"W	polygon
SEC.19-T3N-R67W SECTION LINES		28.00	4005.85	-134.36	3150413.01	1322490.88	40°13'02.572"N	104°57'40.986"W	polygon
SEC.23-T3N-R68W HARDLINES (460' SETBACKS)		28.00	4005.85	-134.36	3150413.01	1322490.88	40°13'02.572"N	104°57'40.986"W	polygon
SEC.23-T3N-R68W SECTION LINES		28.00	4005.85	-134.36	3150413.01	1322490.88	40°13'02.572"N	104°57'40.986"W	polygon
SEC.24-T3N-R68W HARDLINES (460' SETBACKS)		28.00	4005.85	-134.36	3150413.01	1322490.88	40°13'02.572"N	104°57'40.986"W	polygon
SEC.24-T3N-R68W SECTION LINES		28.00	4005.85	-134.36	3150413.01	1322490.88	40°13'02.572"N	104°57'40.986"W	polygon
BENSON FARMS 23N-19HZ LAND BOX		7135.00	0.00	0.00	3150571.72	1318486.11	40°12'22.986"N	104°57'39.254"W	polygon
BENSON FARMS 23N-19HZ BHL (1315'FSL & 2071'FWL, SEC.19) REV-2		7136.00	595.14	7416.55	3157984.18	1319126.30	40°12'28.856"N	104°56'03.663"W	point
BENSON FARMS 23N-19HZ BHL (1318'FSL & 2071'FWL, SEC.19) REV-3		7136.00	598.14	7416.55	3157984.16	1319129.30	40°12'28.886"N	104°56'03.663"W	point
BENSON FARMS 23N-19HZ BHL ON PLAT (1235'FSL & 2071'FWL, SEC.19) REV-1		7136.00	515.18	7416.52	3157984.64	1319046.34	40°12'28.066"N	104°56'03.664"W	point

WELLPATH COMPOSITION - Ref Wellbore: BENSON FARMS 23N-19HZ AWB Ref Wellpath: BENSON FARMS 23N-19HZ AWP				
Start MD [ft]	End MD [ft]	Positional Uncertainty Model	Log Name/Comment	Wellbore
16.00	1141.00	Generic gyro - continuous (Standard)	MS ENERGY GYRO SURVEYS <116-1141>	BENSON FARMS 23N-19HZ AWB
1141.00	7450.00	NaviTrak (IFR)	BHI MWD+IFR SURVEYS 8 3/4" HOLE <1300-7450>	BENSON FARMS 23N-19HZ AWB
7450.00	14055.00	NaviTrak (IFR)	BHI MWD+IFR SURVEYS 6 1/8" HOLE <7568-14055>	BENSON FARMS 23N-19HZ AWB
14055.00	14120.00	Blind Drilling (std)	Projection to bit	BENSON FARMS 23N-19HZ AWB

REFERENCE WELLPATH IDENTIFICATION			
Operator	KERR-MCGEE OIL & GAS ONSHORE LP	Slot	SLOT#35 BENSON FARMS 23N-19HZ (737'FSL & 71'FEL, SEC.23)
Area	COLORADO	Well	BENSON FARMS 23N-19HZ
Field	WELD COUNTY (KERR MCGEE)	Wellbore	BENSON FARMS 23N-19HZ AWB
Facility	SEC.23-T3N-R68W		

WELLPATH COMMENTS				
MD [ft]	Inclination [°]	Azimuth [°]	TVD [ft]	Comment
16.00	0.000	238.390	16.00	Tie-On
116.00	0.510	238.390	116.00	Begin GYRO Surveys
1141.00	0.590	197.150	1140.97	Tie-Into GYRO Surveys
1300.00	0.200	233.800	1299.97	Begin BHI MWD+IFR Surveys
7501.00	91.050	93.802	7176.04	7" Casing Point
14055.00	88.500	88.900	7158.31	Last BHI MWD+IFR Surveys
14120.00	88.500	88.900	7160.01	Projection to Bit