



Radial Cement Bond Log
Gamma-Ray
CCL

Company KERR-McGEE OIL & GAS ONSHORE LP
Well WADDLE 24-10J7
Field WATTENBERG
County WELD
State COLORADO

Company KERR-McGEE OIL & GAS ONSHORE LP
Well WADDLE 24-10J7
Field WATTENBERG
County WELD State COLORADO

Location: API # : 05-123-17901
SW / SE
LAT: 40.20600 & LONG: -104.83710
SEC 24 TWP 3N RGE 67W
Permanent Datum GL Elevation 4792'
Log Measured From KB 11'
Drilling Measured From KB
Other Services
K.B. 4803'
D.F. 4802'
G.L. 4792'

Date 10-17-2014

Run Number ONE
Depth Driller 7677
Depth Logger 4790'
Bottom Logged Interval 4790'
Top Log Interval 3690'
Open Hole Size 7 7/8"
Type Fluid WATER
Density / Viscosity 1.0
Max. Recorded Temp. N/A
Estimated Cement Top 3994'
Time Well Ready N/A
Time Logger on Bottom N/A
Equipment Number 4495
Location GREELEY
Recorded By M. JANDREAU
Witnessed By RYAN THOMPSON

Borehole Record
Run Number Bit From To Size Weight From To
ONE
TWO

Casing Record
Surface String Size 8 5/8" Wgt/Ft 24# Top 0 Bottom 512'
Prot. String
Production String 3.5 7.7# 0 7674'
Liner

<<< Fold Here >>>



All interpretations are opinions based on inferences from electrical or other measurements and we cannot and do not guarantee the accuracy or correctness of any interpretation, and we shall not, except in the case of gross or willful negligence on our part, be liable or responsible for any loss, costs, damages, or expenses incurred or sustained by anyone resulting from any interpretation made by any of our officers, agents or employees. These interpretations are also subject to our general terms and conditions set out in our current Price Schedule.

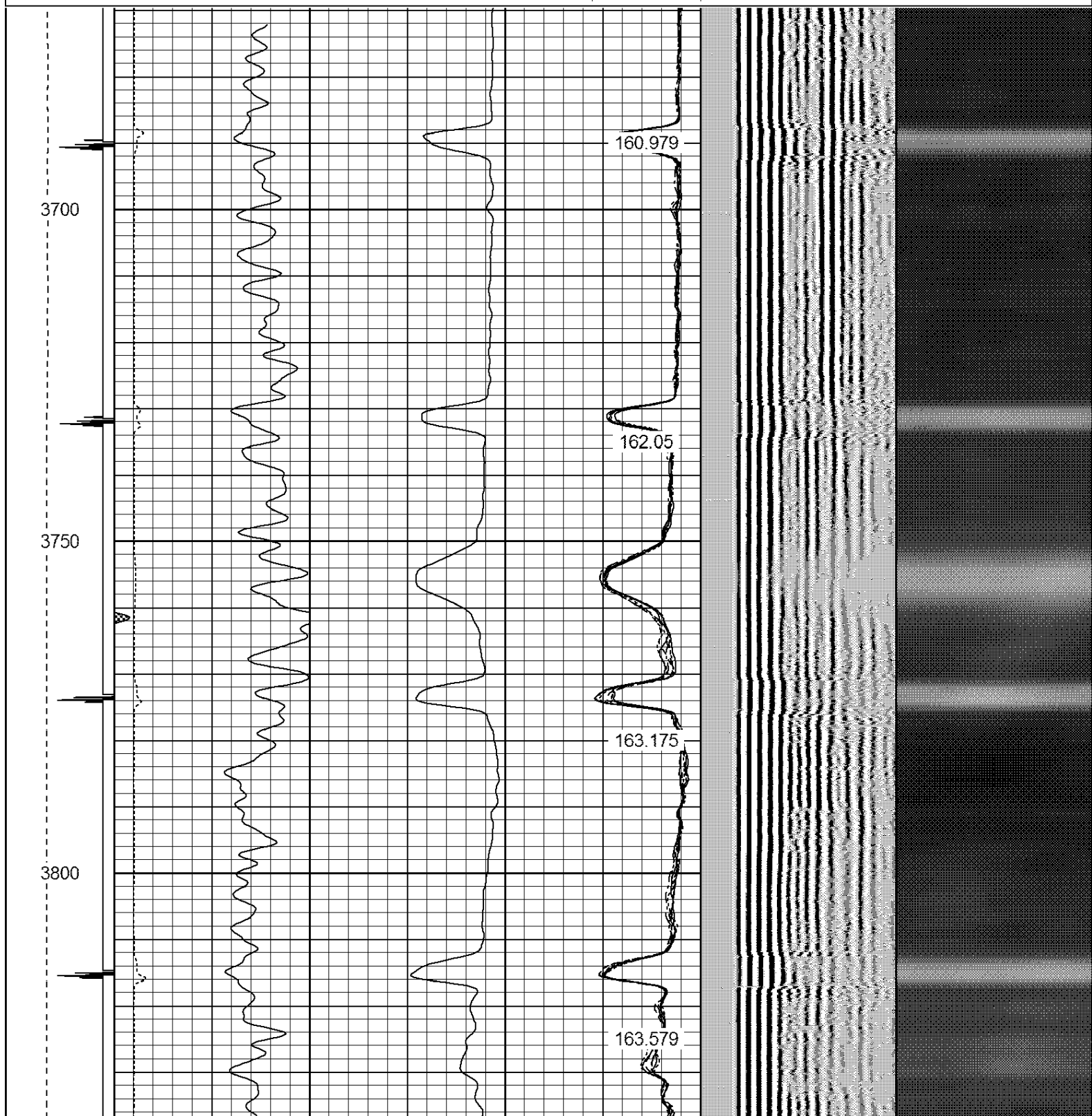
Comments

NOT CORRELATED
LOGGED TO VERIFY CEMENT COVERAGE
THANK YOU FOR USING WARRIOR ENERGY SERVICES.

Sensor	Offset (ft)	Schematic	Description	Len (ft)	OD (in)	Wt (lb)
CENT	19.08					

Database File:	waddle 24-10j7.db
Dataset Pathname:	pass3
Presentation Format:	ips_rbt

-9	CCL	1	200	TT (usec)	800	0	AMP (mV)	100	0	AMPS1	100	200	VDL	1200	1	Cement Map	8	
LSPD (ft/min)			0	GR (cps)	200	0	AMPx5 (mV)	20	0	AMPS2	100				1			100
			200	GR (cps)	400				0	AMPS4	100							
0 250 -----									0	AMPS5	100							
									0	AMPS6	100							
									0	AMPS7	100							
									0	AMPS8	100							
											IntTemp (degF)							



3850

3900

3950

4000

4050

Casing Collars

Top of Cement

LSPD

CCL

TT

GR

AMPx5

AMP

163.709

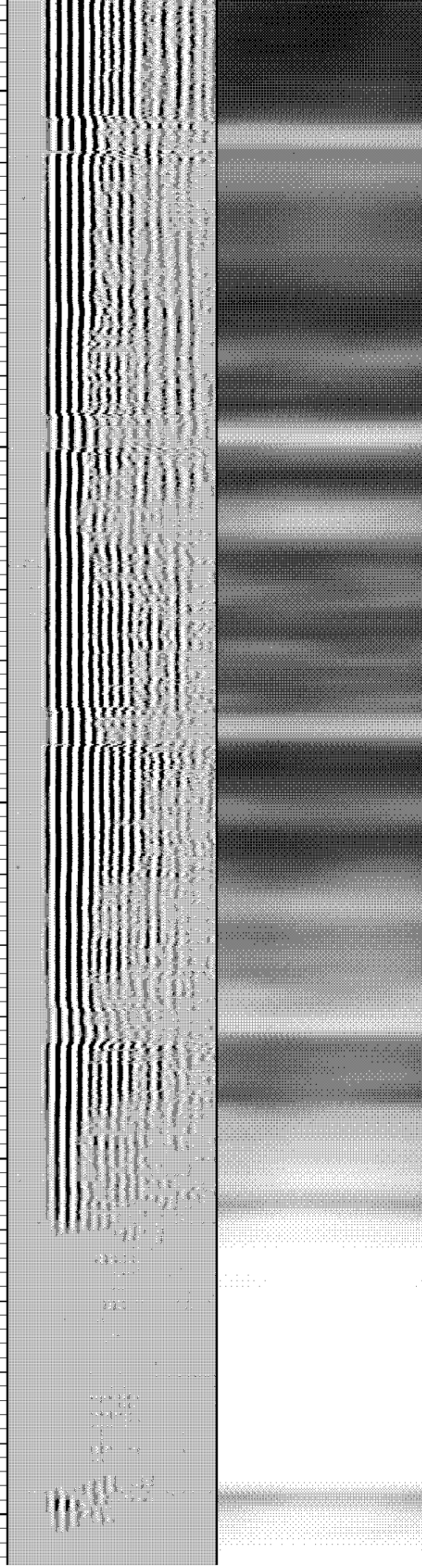
163.686

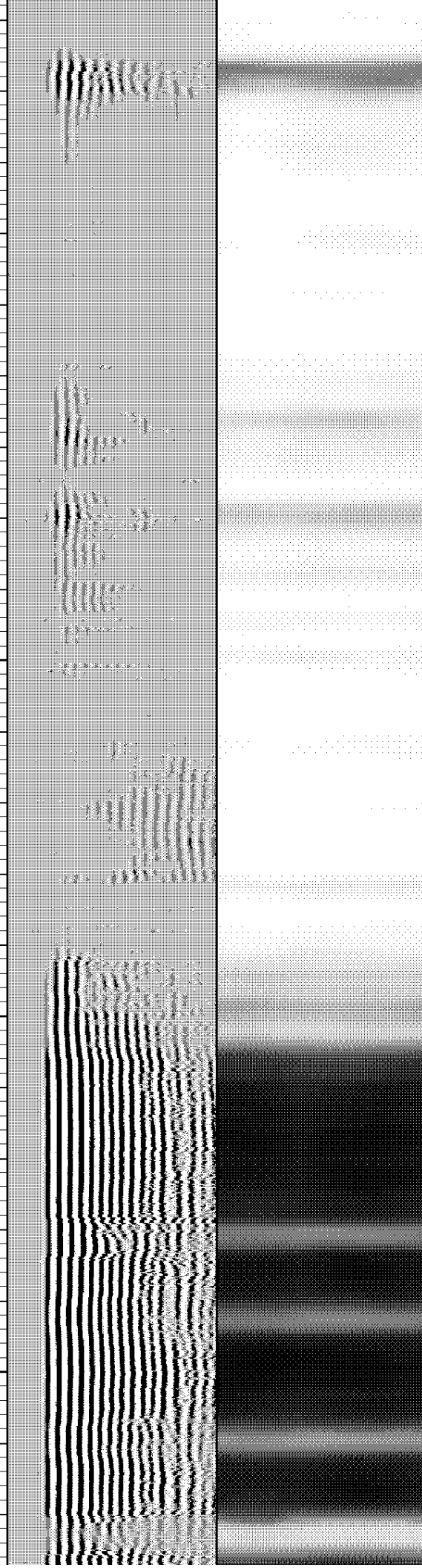
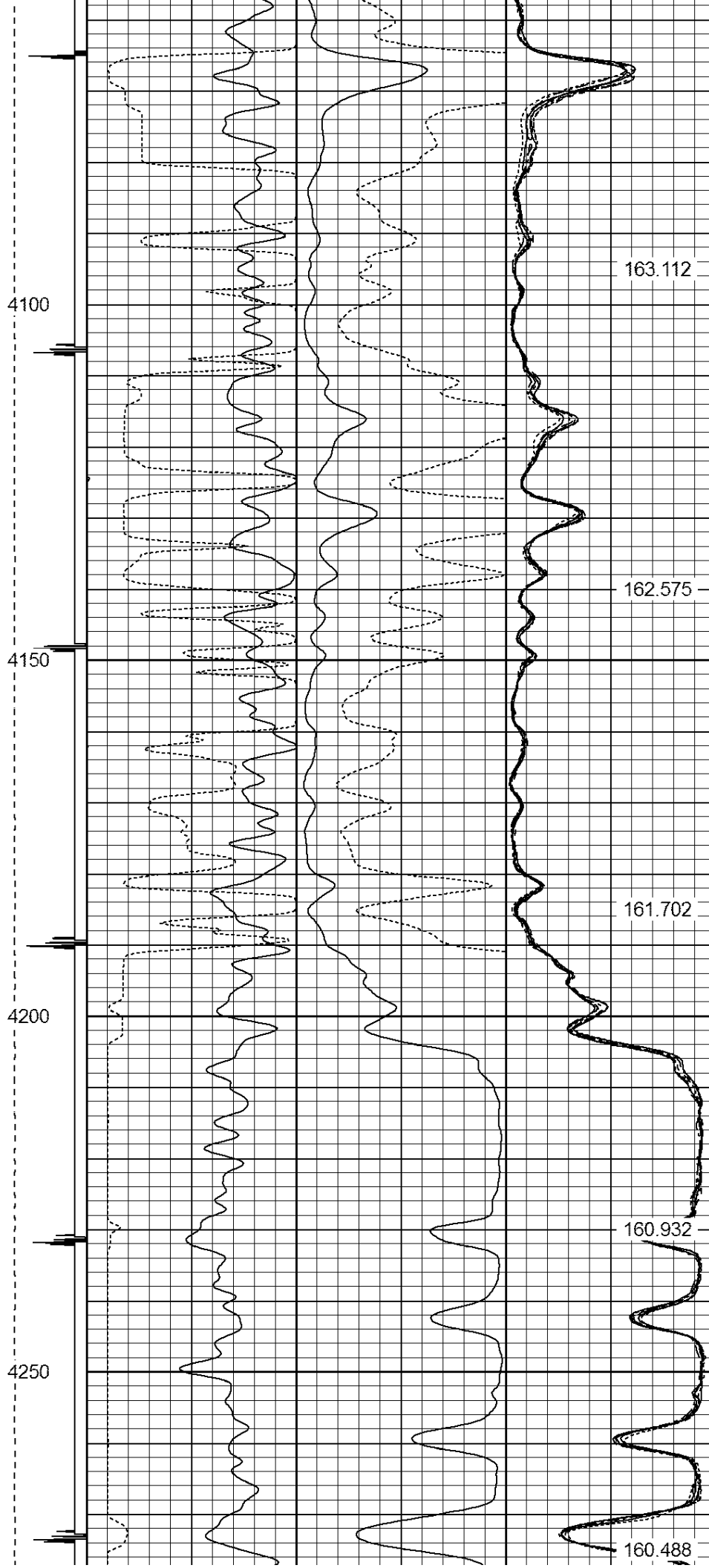
163.65

163.412

163.19

AMPS8
AMPS7
AMPS6
AMPS5
AMPS4
AMPS2
AMPS1





4300

4350

4400

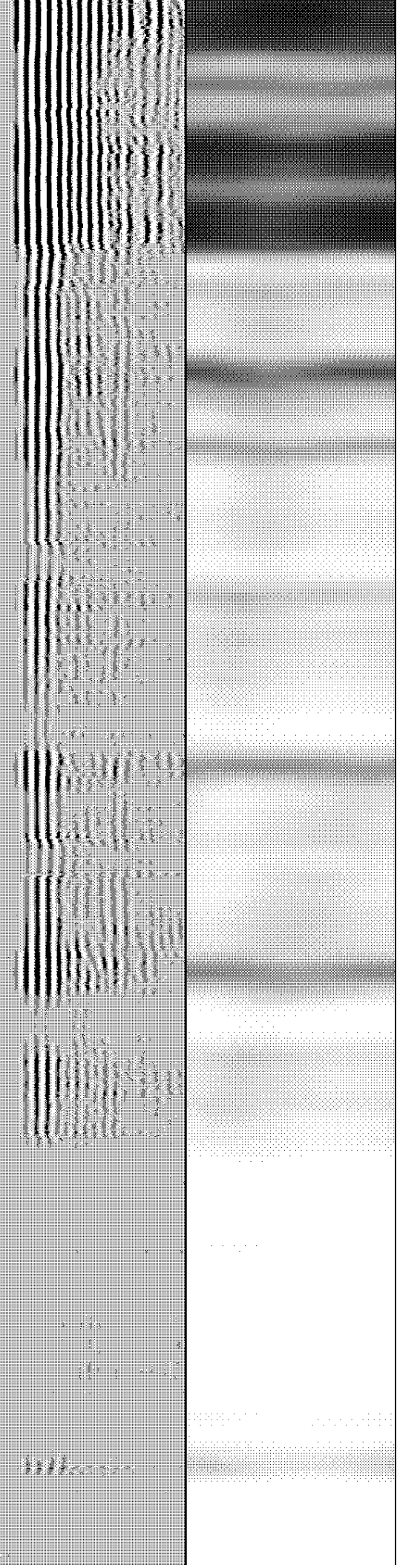
4450

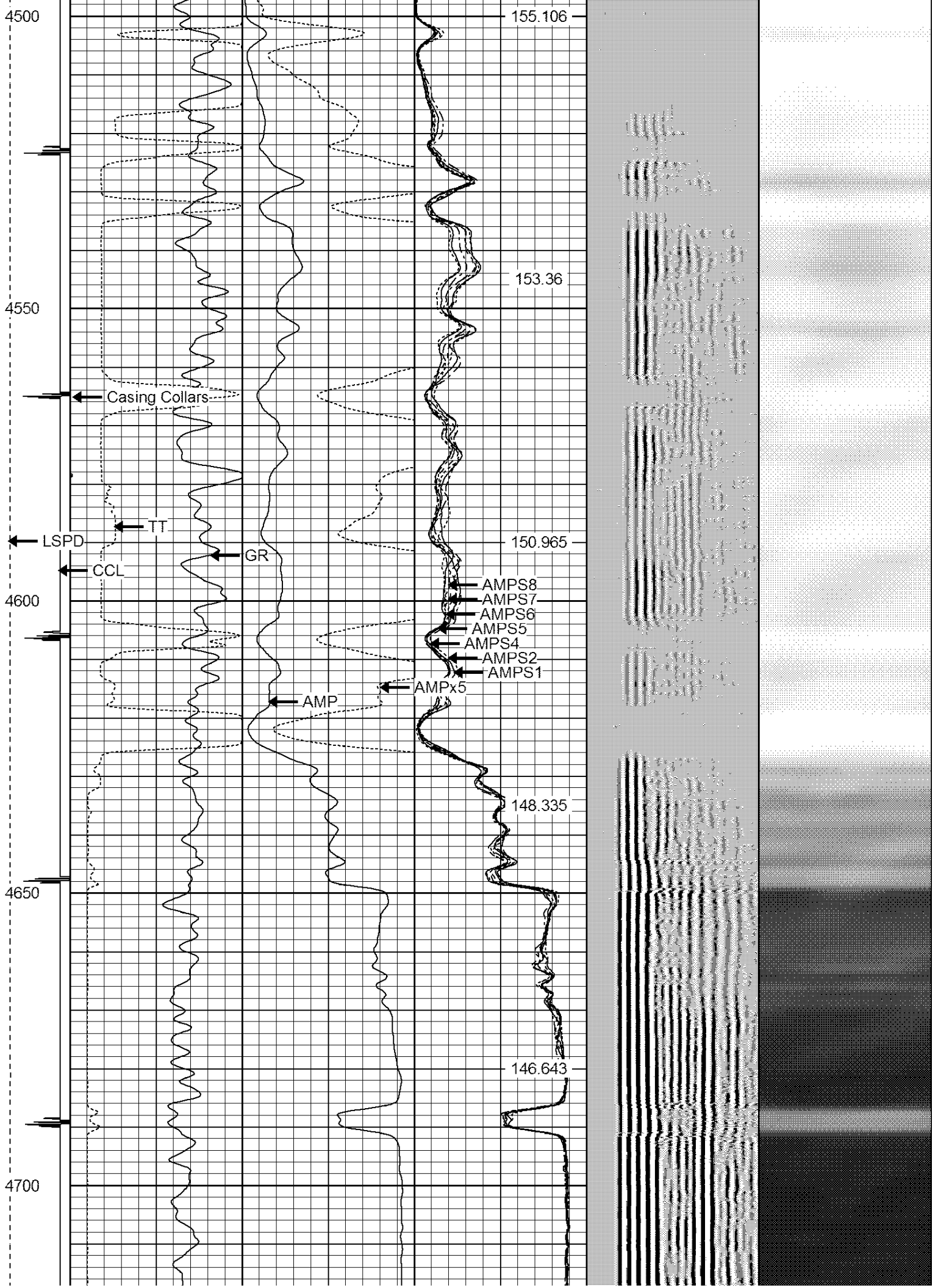
159.747

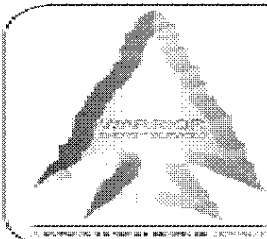
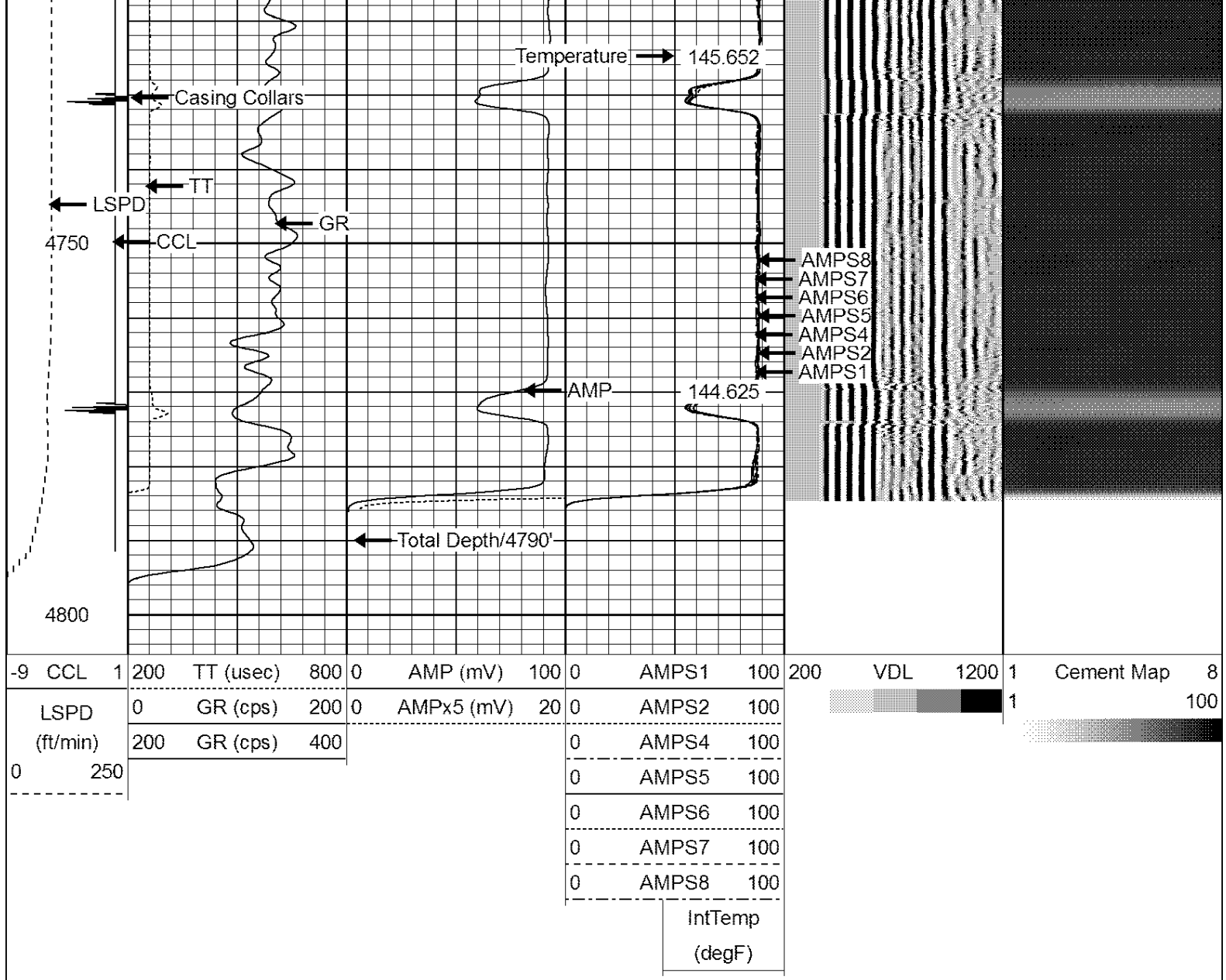
159.001

158.137

156.77







WARRIOR
ENERGY SERVICES

Company KERR-McGEE OIL & GAS ONSHORE LP

Well WADDLE 24-10J7

Field WATTENBERG

County WELD

State COLORADO