

BONANZA CREEK OIL COMPANY

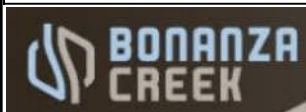
Location: COLORADO Slot: SLOT#06 STATE ANTELOPE P41-T44-32HNC (482'FNL & 1142'FEL, SEC.32)

Field: WELD COUNTY Well: STATE ANTELOPE P41-T44-32HNC

Facility: SEC.32-T5N-R62W Wellbore: STATE ANTELOPE P41-T44-32HNC PWB

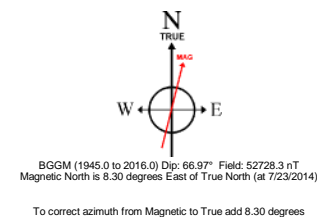
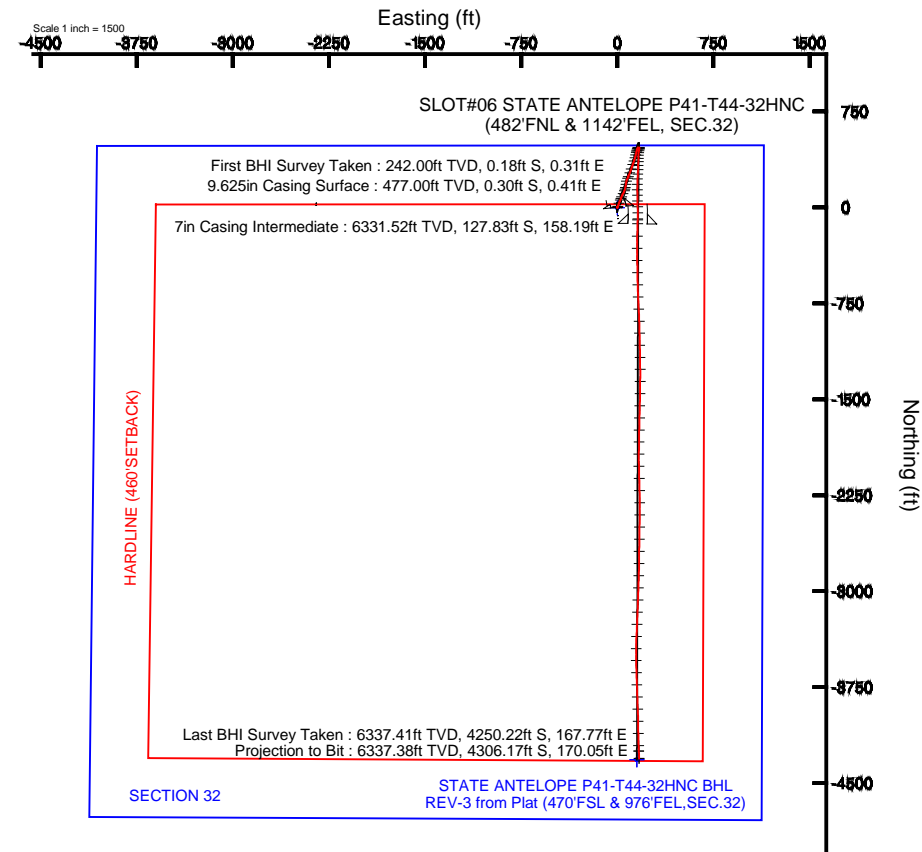
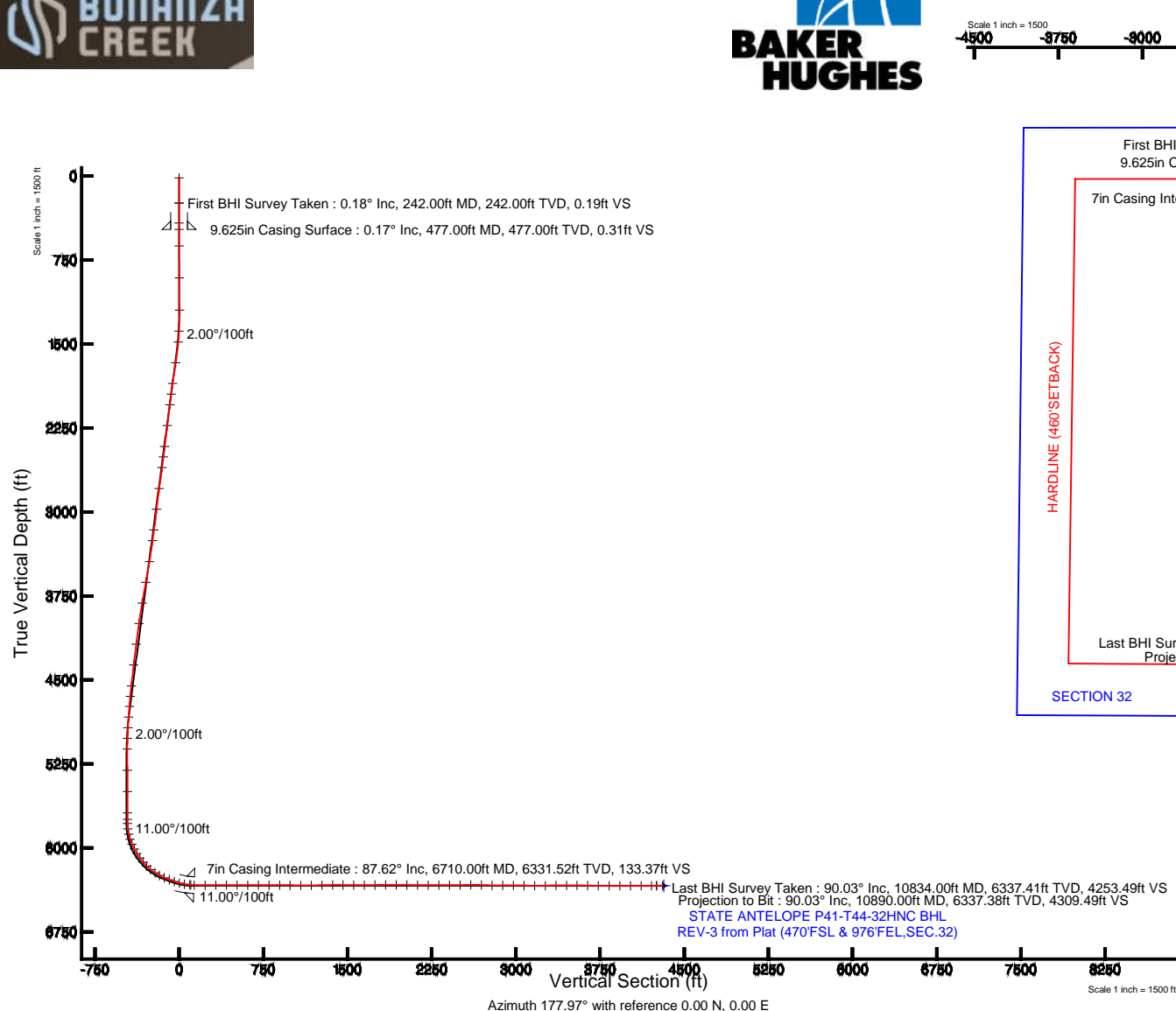
Plot reference wellpath is STATE ANTELOPE P41-T44-32HNC (REV-C.0) PWP

True vertical depths are referenced to RIG (RKB)	Grid System: NAD83 / Lambert Colorado SP, Northern Zone (501), US feet
Measured depths are referenced to RIG (RKB)	North Reference: True north
RIG (RKB) to Mean Sea Level: 4590 feet	Scale: True distance
Mean Sea Level to Mud line (At Slot: SLOT#06 STATE ANTELOPE P41-T44-32HNC (482'FNL & 1142'FEL, SEC.32)): 0 feet	Depths are in feet
Coordinates are in feet referenced to Slot	Created by: guenaler on 10/15/2014



Location Information

Facility Name			Grid East (US ft)	Grid North (US ft)	Latitude	Longitude
SEC.32-T5N-R62W			3320239.453	1376843.336	40°21'43.704"N	104°21'52.808"W
Slot	Local N (ft)	Local E (ft)	Grid East (US ft)	Grid North (US ft)	Latitude	Longitude
SLOT#06 STATE ANTELOPE P41-T44-32HNC (482'FNL & 1142'FEL, SEC.32)	-14.46	2349.26	3322588.598	1376859.321	40°21'43.560"N	104°20'32.460"W
RIG (RKB) to Mud line (At Slot: SLOT#06 STATE ANTELOPE P41-T44-32HNC (482'FNL & 1142'FEL, SEC.32))					4590ft	
Mean Sea Level to Mud line (At Slot: SLOT#06 STATE ANTELOPE P41-T44-32HNC (482'FNL & 1142'FEL, SEC.32))					0ft	
RIG (RKB) to Mean Sea Level					4590ft	





Actual Wellpath Report

STATE ANTELOPE P41-T44-32HNC AWP

Page 1 of 7



REFERENCE WELLPATH IDENTIFICATION

Operator	BONANZA CREEK OIL COMPANY	Slot	SLOT#06 STATE ANTELOPE P41-T44-32HNC (482'FNL & 1142'FEL, SEC.32)
Area	COLORADO	Well	STATE ANTELOPE P41-T44-32HNC
Field	WELD COUNTY	Wellbore	STATE ANTELOPE P41-T44-32HNC AWB
Facility	SEC.32-T5N-R62W		

REPORT SETUP INFORMATION

Projection System	NAD83 / Lambert Colorado SP, Northern Zone (501), US feet	Software System	WellArchitect® 4.0.0
North Reference	True	User	Guenaler
Scale	0.999959	Report Generated	10/15/2014 at 5:41:34 PM
Convergence at slot	n/a	Database/Source file	WA_Denver/STATE_ANTELOPE_P41-T44-32HNC_AWB.xml

WELLPATH LOCATION

	Local coordinates		Grid coordinates		Geographic coordinates	
	North[ft]	East[ft]	Easting[US ft]	Northing[US ft]	Latitude	Longitude
Slot Location	-14.46	2349.26	3322588.60	1376859.32	40°21'43.560"N	104°20'32.460"W
Facility Reference Pt			3320239.45	1376843.34	40°21'43.704"N	104°21'02.808"W
Field Reference Pt			3335925.10	1457282.25	40°34'56.460"N	104°17'26.016"W

WELLPATH DATUM

Calculation method	Minimum curvature	RIG (RKB) to Facility Vertical Datum	4590.00ft
Horizontal Reference Pt	Slot	RIG (RKB) to Mean Sea Level	4590.00ft
Vertical Reference Pt	RIG (RKB)	RIG (RKB) to Mud Line at Slot (SLOT#06 STATE ANTELOPE P41-T44-32HNC (482'FNL & 1142'FEL, SEC.32))	4590.00ft
MD Reference Pt	RIG (RKB)	Section Origin	N 0.00, E 0.00 ft
Field Vertical Reference	Mean Sea Level	Section Azimuth	177.97°



Actual Wellpath Report

STATE ANTELOPE P41-T44-32HNC AWP

Page 2 of 7



REFERENCE WELLPATH IDENTIFICATION

Operator	BONANZA CREEK OIL COMPANY	Slot	SLOT#06 STATE ANTELOPE P41-T44-32HNC (482'FNL & 1142'FEL, SEC.32)
Area	COLORADO	Well	STATE ANTELOPE P41-T44-32HNC
Field	WELD COUNTY	Wellbore	STATE ANTELOPE P41-T44-32HNC AWB
Facility	SEC.32-T5N-R62W		

WELLPATH DATA (103 stations) † = interpolated/extrapolated station

MD [ft]	Inclination [°]	Azimuth [°]	TVD [ft]	Vert Sect [ft]	North [ft]	East [ft]	Latitude	Longitude	DLS [°/100ft]	Comments
0.00†	0.000	120.180	0.00	0.00	0.00	0.00	40°21'43.560"N	104°20'32.460"W	0.00	
17.00	0.000	120.180	17.00	0.00	0.00	0.00	40°21'43.560"N	104°20'32.460"W	0.00	
242.00	0.180	120.180	242.00	0.19	-0.18	0.31	40°21'43.558"N	104°20'32.456"W	0.08	First BHI Survey Taken
421.00	0.030	299.370	421.00	0.31	-0.30	0.51	40°21'43.557"N	104°20'32.453"W	0.12	
625.00	0.570	260.830	625.00	0.41	-0.43	-0.54	40°21'43.556"N	104°20'32.467"W	0.27	
911.00	0.440	190.950	910.99	1.66	-1.74	-2.15	40°21'43.543"N	104°20'32.488"W	0.21	
1197.00	0.240	195.840	1196.98	3.30	-3.39	-2.53	40°21'43.526"N	104°20'32.493"W	0.07	
1386.00	3.600	36.140	1385.86	-0.99	1.02	0.87	40°21'43.570"N	104°20'32.449"W	2.02	
1482.00	5.860	18.240	1481.54	-7.96	8.11	4.18	40°21'43.640"N	104°20'32.406"W	2.78	
1669.00	9.440	21.530	1666.84	-30.98	31.45	12.80	40°21'43.871"N	104°20'32.295"W	1.93	
1858.00	8.250	23.330	1853.59	-57.44	58.32	23.86	40°21'44.136"N	104°20'32.152"W	0.65	
1953.00	8.140	19.590	1947.62	-69.85	70.92	28.81	40°21'44.261"N	104°20'32.088"W	0.57	
2048.00	7.830	22.370	2041.70	-81.99	83.24	33.53	40°21'44.383"N	104°20'32.027"W	0.52	
2236.00	8.630	27.400	2227.77	-105.94	107.60	44.89	40°21'44.623"N	104°20'31.880"W	0.57	
2425.00	7.230	23.390	2414.96	-129.03	131.11	56.14	40°21'44.856"N	104°20'31.735"W	0.80	
2519.00	7.730	12.670	2508.16	-140.49	142.71	59.88	40°21'44.970"N	104°20'31.687"W	1.57	
2614.00	7.270	11.160	2602.35	-152.52	154.84	62.44	40°21'45.090"N	104°20'31.653"W	0.53	
2803.00	8.450	8.980	2789.57	-177.80	180.29	66.92	40°21'45.342"N	104°20'31.595"W	0.64	
2991.00	6.360	12.720	2975.99	-201.43	204.09	71.37	40°21'45.577"N	104°20'31.538"W	1.14	
3178.00	9.190	26.130	3161.27	-224.62	227.61	80.23	40°21'45.809"N	104°20'31.424"W	1.79	
3273.00	8.120	22.070	3255.19	-237.43	240.64	86.09	40°21'45.938"N	104°20'31.348"W	1.30	
3464.00	10.090	20.240	3443.77	-265.23	268.84	96.95	40°21'46.217"N	104°20'31.208"W	1.04	
3651.00	10.900	20.570	3627.64	-296.71	300.76	108.83	40°21'46.532"N	104°20'31.054"W	0.43	
3841.00	10.430	17.840	3814.36	-329.47	333.95	120.41	40°21'46.860"N	104°20'30.904"W	0.36	
4026.00	8.670	18.610	3996.79	-358.27	363.11	129.99	40°21'47.148"N	104°20'30.781"W	0.95	
4213.00	7.610	16.650	4181.90	-383.19	388.33	138.04	40°21'47.397"N	104°20'30.677"W	0.59	
4400.00	6.500	11.800	4367.49	-405.19	410.55	143.75	40°21'47.617"N	104°20'30.603"W	0.67	
4587.00	6.470	12.900	4553.29	-425.65	431.19	148.27	40°21'47.821"N	104°20'30.545"W	0.07	
4680.00	5.410	16.880	4645.79	-434.86	440.49	150.71	40°21'47.913"N	104°20'30.513"W	1.22	
4772.00	5.140	19.390	4737.40	-442.80	448.53	153.34	40°21'47.992"N	104°20'30.479"W	0.39	



Actual Wellpath Report

STATE ANTELOPE P41-T44-32HNC AWP

Page 3 of 7



REFERENCE WELLPATH IDENTIFICATION

Operator	BONANZA CREEK OIL COMPANY	Slot	SLOT#06 STATE ANTELOPE P41-T44-32HNC (482'FNL & 1142'FEL, SEC.32)
Area	COLORADO	Well	STATE ANTELOPE P41-T44-32HNC
Field	WELD COUNTY	Wellbore	STATE ANTELOPE P41-T44-32HNC AWB
Facility	SEC.32-T5N-R62W		

WELLPATH DATA (103 stations)

MD [ft]	Inclination [°]	Azimuth [°]	TVD [ft]	Vert Sect [ft]	North [ft]	East [ft]	Latitude	Longitude	DLS [°/100ft]	Comments
4867.00	4.870	20.790	4832.04	-450.48	456.31	156.18	40°21'48.069"N	104°20'30.442"W	0.31	
4962.00	2.680	30.960	4926.83	-456.06	461.99	158.76	40°21'48.125"N	104°20'30.409"W	2.40	
5058.00	2.520	32.610	5022.73	-459.68	465.69	161.05	40°21'48.162"N	104°20'30.380"W	0.18	
5152.00	1.050	74.240	5116.68	-461.58	467.66	162.99	40°21'48.181"N	104°20'30.354"W	1.99	
5342.00	0.860	138.110	5306.66	-460.90	467.07	165.62	40°21'48.175"N	104°20'30.320"W	0.54	
5533.00	0.680	101.640	5497.64	-459.53	465.78	167.69	40°21'48.163"N	104°20'30.294"W	0.27	
5723.00	0.830	70.470	5687.63	-459.68	466.01	170.09	40°21'48.165"N	104°20'30.263"W	0.23	
5781.00	0.810	96.080	5745.62	-459.75	466.11	170.89	40°21'48.166"N	104°20'30.252"W	0.63	
5817.00	0.890	110.570	5781.62	-459.61	465.98	171.41	40°21'48.165"N	104°20'30.246"W	0.64	
5864.00	6.020	183.480	5828.53	-457.01	463.39	171.60	40°21'48.139"N	104°20'30.243"W	12.38	
5912.00	12.260	186.780	5875.89	-449.46	455.81	170.84	40°21'48.064"N	104°20'30.253"W	13.04	
5959.00	18.860	191.620	5921.15	-437.13	443.40	168.72	40°21'47.942"N	104°20'30.280"W	14.30	
6007.00	22.790	185.800	5966.01	-420.38	426.54	166.22	40°21'47.775"N	104°20'30.313"W	9.24	
6054.00	26.730	179.970	6008.69	-400.78	406.91	165.30	40°21'47.581"N	104°20'30.325"W	9.85	
6102.00	32.160	182.060	6050.47	-377.24	383.33	164.85	40°21'47.348"N	104°20'30.330"W	11.51	
6149.00	36.340	181.850	6089.31	-350.85	356.90	163.95	40°21'47.087"N	104°20'30.342"W	8.90	
6197.00	39.720	181.270	6127.12	-321.34	327.34	163.15	40°21'46.795"N	104°20'30.352"W	7.08	
6244.00	45.260	183.110	6161.76	-289.70	295.63	161.91	40°21'46.481"N	104°20'30.368"W	12.08	
6292.00	51.260	183.080	6193.70	-254.04	259.89	159.98	40°21'46.128"N	104°20'30.393"W	12.50	
6339.00	56.960	183.460	6221.24	-216.15	221.89	157.80	40°21'45.753"N	104°20'30.421"W	12.15	
6387.00	61.970	180.760	6245.63	-174.93	180.59	156.31	40°21'45.345"N	104°20'30.441"W	11.51	
6434.00	66.520	180.100	6266.04	-132.65	138.27	155.99	40°21'44.926"N	104°20'30.445"W	9.76	
6482.00	70.530	178.850	6283.61	-88.01	93.62	156.41	40°21'44.485"N	104°20'30.439"W	8.70	
6529.00	70.270	179.150	6299.38	-43.74	49.35	157.18	40°21'44.048"N	104°20'30.429"W	0.82	
6577.00	74.290	177.770	6313.99	1.97	3.65	158.42	40°21'43.596"N	104°20'30.414"W	8.81	
6624.00	81.130	179.730	6323.99	47.86	-42.23	159.41	40°21'43.143"N	104°20'30.401"W	15.11	
6672.00	85.600	181.230	6329.53	95.48	-89.90	159.01	40°21'42.672"N	104°20'30.406"W	9.82	
6680.00	86.810	181.180	6330.06	103.45	-97.88	158.84	40°21'42.593"N	104°20'30.408"W	15.14	
6808.00	90.280	181.620	6333.31	231.16	-225.78	155.71	40°21'41.329"N	104°20'30.449"W	2.73	
6903.00	90.550	179.780	6332.62	326.05	-320.76	154.55	40°21'40.390"N	104°20'30.464"W	1.96	



Actual Wellpath Report

STATE ANTELOPE P41-T44-32HNC AWP

Page 4 of 7



REFERENCE WELLPATH IDENTIFICATION

Operator	BONANZA CREEK OIL COMPANY	Slot	SLOT#06 STATE ANTELOPE P41-T44-32HNC (482'FNL & 1142'FEL, SEC.32)
Area	COLORADO	Well	STATE ANTELOPE P41-T44-32HNC
Field	WELD COUNTY	Wellbore	STATE ANTELOPE P41-T44-32HNC AWB
Facility	SEC.32-T5N-R62W		

WELLPATH DATA (103 stations)

MD [ft]	Inclination [°]	Azimuth [°]	TVD [ft]	Vert Sect [ft]	North [ft]	East [ft]	Latitude	Longitude	DLS [°/100ft]	Comments
6998.00	89.910	178.950	6332.24	421.01	-415.75	155.60	40°21'39.452"N	104°20'30.450"W	1.10	
7093.00	89.910	179.120	6332.39	516.00	-510.74	157.20	40°21'38.513"N	104°20'30.429"W	0.18	
7188.00	90.000	178.620	6332.47	610.99	-605.72	159.08	40°21'37.574"N	104°20'30.405"W	0.53	
7282.00	89.940	177.730	6332.52	704.98	-699.67	162.07	40°21'36.646"N	104°20'30.366"W	0.95	
7377.00	89.250	176.770	6333.19	799.97	-794.56	166.63	40°21'35.708"N	104°20'30.308"W	1.24	
7472.00	90.860	178.140	6333.10	894.96	-889.46	170.85	40°21'34.771"N	104°20'30.253"W	2.23	
7566.00	89.100	178.700	6333.13	988.96	-983.42	173.44	40°21'33.842"N	104°20'30.220"W	1.96	
7661.00	89.470	178.950	6334.31	1083.94	-1078.39	175.39	40°21'32.904"N	104°20'30.194"W	0.47	
7755.00	90.310	178.920	6334.49	1177.92	-1172.38	177.13	40°21'31.975"N	104°20'30.172"W	0.89	
7849.00	91.540	179.390	6332.98	1271.89	-1266.35	178.52	40°21'31.046"N	104°20'30.154"W	1.40	
7944.00	90.870	180.920	6330.98	1366.80	-1361.33	178.26	40°21'30.108"N	104°20'30.157"W	1.76	
8038.00	88.980	180.580	6331.10	1460.68	-1455.31	177.03	40°21'29.179"N	104°20'30.173"W	2.04	
8133.00	90.400	181.460	6331.62	1555.54	-1550.29	175.34	40°21'28.240"N	104°20'30.195"W	1.76	
8228.00	89.380	181.030	6331.80	1650.38	-1645.27	173.28	40°21'27.302"N	104°20'30.222"W	1.17	
8323.00	91.200	181.720	6331.32	1745.21	-1740.24	171.00	40°21'26.363"N	104°20'30.251"W	2.05	
8417.00	89.910	180.590	6330.41	1839.06	-1834.21	169.10	40°21'25.435"N	104°20'30.276"W	1.82	
8512.00	90.220	180.380	6330.30	1933.96	-1929.21	168.30	40°21'24.496"N	104°20'30.286"W	0.39	
8607.00	89.170	178.960	6330.80	2028.92	-2024.20	168.85	40°21'23.557"N	104°20'30.279"W	1.86	
8702.00	89.690	178.540	6331.75	2123.90	-2119.17	170.92	40°21'22.619"N	104°20'30.252"W	0.70	
8797.00	90.060	178.610	6331.96	2218.90	-2214.14	173.28	40°21'21.680"N	104°20'30.222"W	0.40	
8892.00	89.440	179.800	6332.37	2313.87	-2309.13	174.60	40°21'20.742"N	104°20'30.205"W	1.41	
8986.00	90.000	180.300	6332.83	2407.81	-2403.13	174.52	40°21'19.813"N	104°20'30.206"W	0.80	
9081.00	91.450	181.190	6331.63	2502.69	-2498.11	173.28	40°21'18.874"N	104°20'30.222"W	1.79	
9176.00	90.650	180.540	6329.89	2597.55	-2593.08	171.85	40°21'17.936"N	104°20'30.240"W	1.08	
9271.00	87.630	180.710	6331.31	2692.42	-2688.05	170.81	40°21'16.997"N	104°20'30.254"W	3.18	
9366.00	89.410	180.860	6333.77	2787.27	-2783.01	169.51	40°21'16.059"N	104°20'30.270"W	1.88	
9461.00	90.740	181.580	6333.64	2882.12	-2877.98	167.49	40°21'15.121"N	104°20'30.297"W	1.59	
9556.00	88.760	181.920	6334.06	2976.90	-2972.93	164.59	40°21'14.182"N	104°20'30.334"W	2.11	
9651.00	89.200	182.240	6335.75	3071.64	-3067.86	161.14	40°21'13.244"N	104°20'30.379"W	0.57	
9747.00	89.780	182.180	6336.60	3167.38	-3163.78	157.44	40°21'12.296"N	104°20'30.426"W	0.61	



Actual Wellpath Report

STATE ANTELOPE P41-T44-32HNC AWP

Page 5 of 7



REFERENCE WELLPATH IDENTIFICATION

Operator	BONANZA CREEK OIL COMPANY	Slot	SLOT#06 STATE ANTELOPE P41-T44-32HNC (482'FNL & 1142'FEL, SEC.32)
Area	COLORADO	Well	STATE ANTELOPE P41-T44-32HNC
Field	WELD COUNTY	Wellbore	STATE ANTELOPE P41-T44-32HNC AWB
Facility	SEC.32-T5N-R62W		

WELLPATH DATA (103 stations)

MD [ft]	Inclination [°]	Azimuth [°]	TVD [ft]	Vert Sect [ft]	North [ft]	East [ft]	Latitude	Longitude	DLS [°/100ft]	Comments
9842.00	90.530	182.480	6336.35	3262.10	-3258.70	153.58	40°21'11.358"N	104°20'30.476"W	0.85	
9937.00	90.870	182.670	6335.19	3356.78	-3353.60	149.31	40°21'10.421"N	104°20'30.531"W	0.41	
10032.00	89.630	180.090	6334.77	3451.61	-3448.56	147.02	40°21'09.482"N	104°20'30.561"W	3.01	
10126.00	89.690	179.550	6335.33	3545.55	-3542.56	147.32	40°21'08.553"N	104°20'30.557"W	0.58	
10221.00	89.100	178.000	6336.33	3640.54	-3637.53	149.35	40°21'07.615"N	104°20'30.531"W	1.75	
10316.00	89.380	177.880	6337.59	3735.53	-3732.46	152.76	40°21'06.677"N	104°20'30.487"W	0.32	
10411.00	90.120	178.050	6338.01	3830.53	-3827.40	156.13	40°21'05.739"N	104°20'30.443"W	0.80	
10506.00	90.560	177.720	6337.44	3925.52	-3922.33	159.64	40°21'04.801"N	104°20'30.398"W	0.58	
10601.00	90.030	179.250	6336.95	4020.52	-4017.29	162.15	40°21'03.862"N	104°20'30.366"W	1.70	
10696.00	89.810	178.750	6337.09	4115.50	-4112.28	163.81	40°21'02.924"N	104°20'30.344"W	0.58	
10790.00	89.850	178.310	6337.37	4209.49	-4206.25	166.22	40°21'01.995"N	104°20'30.313"W	0.47	
10834.00	90.030	177.660	6337.41	4253.49	-4250.22	167.77	40°21'01.561"N	104°20'30.293"W	1.53	Last BHI Survey Taken
10890.00	90.030	177.660	6337.38	4309.49	-4306.17	170.05	40°21'01.008"N	104°20'30.264"W	0.00	Projection to Bit

HOLE & CASING SECTIONS -

Ref Wellbore: STATE ANTELOPE P41-T44-32HNC AWB Ref Wellpath: STATE ANTELOPE P41-T44-32HNC AWP

String/Diameter	Start MD [ft]	End MD [ft]	Interval [ft]	Start TVD [ft]	End TVD [ft]	Start N/S [ft]	Start E/W [ft]	End N/S [ft]	End E/W [ft]
13.5in Open Hole	17.00	421.00	404.00	17.00	421.00	0.00	0.00	-0.30	0.51
9.625in Casing Surface	17.00	477.00	460.00	17.00	477.00	0.00	0.00	-0.30	0.41
8.75in Open Hole	477.00	6721.00	6244.00	477.00	6331.95	-0.30	0.41	-138.82	157.94
7in Casing Intermediate	17.00	6710.00	6693.00	17.00	6331.52	0.00	0.00	-127.83	158.19
6.125in Open Hole	6710.00	10890.00	4180.00	6331.52	6337.38	-127.83	158.19	-4306.17	170.05



Actual Wellpath Report

STATE ANTELOPE P41-T44-32HNC AWP

Page 6 of 7



REFERENCE WELLPATH IDENTIFICATION

Operator	BONANZA CREEK OIL COMPANY	Slot	SLOT#06 STATE ANTELOPE P41-T44-32HNC (482'FNL & 1142'FEL, SEC.32)
Area	COLORADO	Well	STATE ANTELOPE P41-T44-32HNC
Field	WELD COUNTY	Wellbore	STATE ANTELOPE P41-T44-32HNC AWB
Facility	SEC.32-T5N-R62W		

TARGETS

Name	MD [ft]	TVD [ft]	North [ft]	East [ft]	Grid East [US ft]	Grid North [US ft]	Latitude	Longitude	Shape
STATE ANTELOPE 41-44-32HNB SECTION 32		0.00	-3.64	0.00	3322588.65	1376855.68	40°21'43.524"N	104°20'32.460"W	polygon
STATE ANTELOPE 41-44-32HNB HARDLINE (460'SETBACK)		6243.00	-3.64	0.00	3322588.65	1376855.68	40°21'43.524"N	104°20'32.460"W	polygon
STATE ANTELOPE P41-T44-32HNB BHL REV-1 (470'FSL & 976'FEL,SEC.32)		6243.00	-4317.06	153.30	3322798.23	1372544.81	40°21'00.900"N	104°20'30.480"W	point
STATE ANTELOPE P41-T44-32HNC BHL REV-3 from Plat (470'FSL & 976'FEL,SEC.32)		6338.00	-4317.06	153.30	3322798.23	1372544.82	40°21'00.900"N	104°20'30.480"W	point
STATE ANTELOPE P41-T44-32HNB BHL REV-2 from Plat (470'FSL & 976'FEL,SEC.32)		6343.00	-4317.06	153.30	3322798.23	1372544.81	40°21'00.900"N	104°20'30.480"W	point
STATE ANTELOPE P41-T44-32HNC TARGET		6343.00	-47.36	167.21	3322756.40	1376814.15	40°21'43.092"N	104°20'30.300"W	point

WELLPATH COMPOSITION -

Ref Wellbore: STATE ANTELOPE P41-T44-32HNC AWB Ref Wellpath: STATE ANTELOPE P41-T44-32HNC AWP

Start MD [ft]	End MD [ft]	Positional Uncertainty Model	Log Name/Comment	Wellbore
17.00	6680.00	NaviTrak (MagCorr)	BHI/Navitrak MagCorr MWD 8.75"Hole <242'-6680'>	STATE ANTELOPE P41-T44-32HNC AWB
6680.00	10834.00	NaviTrak (MagCorr)	BHI/Navitrak MagCorr MWD 6.125" Hole <6808'-10834'>	STATE ANTELOPE P41-T44-32HNC AWB
10834.00	10890.00	Blind Drilling (std)	Projection to bit	STATE ANTELOPE P41-T44-32HNC AWB



Actual Wellpath Report
STATE ANTELOPE P41-T44-32HNC AWP
Page 7 of 7



REFERENCE WELLPATH IDENTIFICATION			
Operator	BONANZA CREEK OIL COMPANY	Slot	SLOT#06 STATE ANTELOPE P41-T44-32HNC (482'FNL & 1142'FEL, SEC.32)
Area	COLORADO	Well	STATE ANTELOPE P41-T44-32HNC
Field	WELD COUNTY	Wellbore	STATE ANTELOPE P41-T44-32HNC AWB
Facility	SEC.32-T5N-R62W		

WELLPATH COMMENTS				
MD [ft]	Inclination [°]	Azimuth [°]	TVD [ft]	Comment
242.00	0.180	120.180	242.00	First BHI Survey Taken
10834.00	90.030	177.660	6337.41	Last BHI Survey Taken
10890.00	90.030	177.660	6337.38	Projection to Bit