

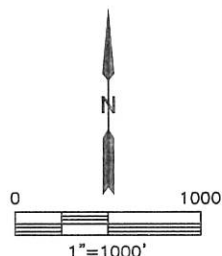
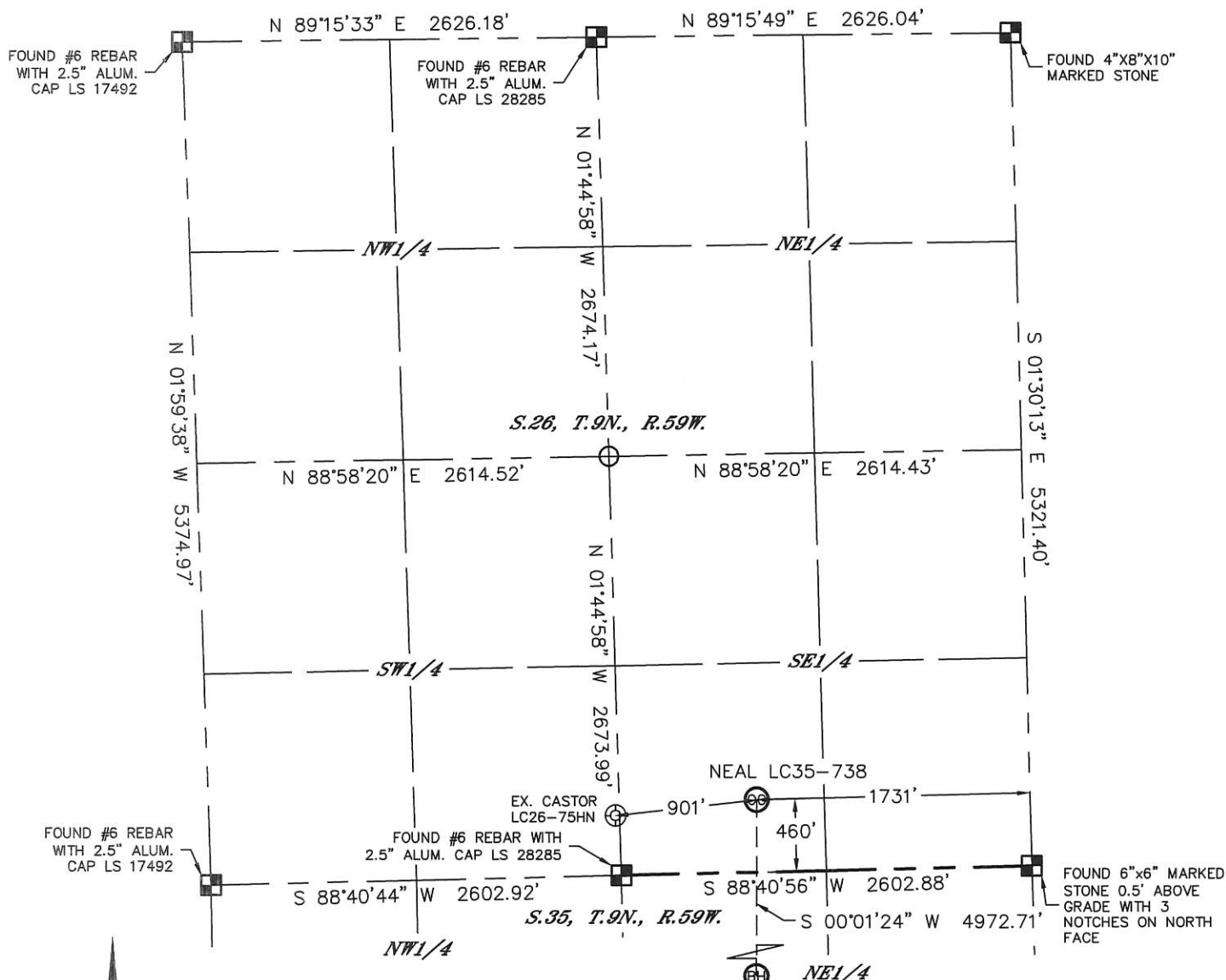


Lat40°, Inc. 1635 Foxtrail Drive, Suite 325 Loveland, CO 970-776-3321

# WELL LOCATION CERTIFICATE

SECTION: 26  
TOWNSHIP: 9N  
RANGE: 59W

THIS MAP DOES NOT REPRESENT A BOUNDARY SURVEY



In accordance with a request from Cody Ball with Noble Energy Inc. Lat40°, Inc. has determined the surface location of the NEAL LC35-738 to be 460' from the SOUTH line and 1731' from the EAST line as measured at right angles from the section lines of Section 26, Township 9 North, Range 59 West and the bottom hole to be 810' from the SOUTH line and 1870' from the EAST line as measured at right angles from the section lines of Section 35, Township 9 North, Range 59 West of the Sixth Principal Meridian, County of Weld, State of Colorado.

I hereby state that this Well Location Certificate was prepared by me, or under my direct supervision, that the fieldwork was completed on 7/24/2014, for and on behalf of Noble Energy Inc. That this is not a Land Survey Plat or an Improvement Survey Plat, and that it is not to be relied upon for establishment of fence, building, or other future improvement lines.

## NOTE:

- 1) Bearings shown are Grid Bearings of the Colorado State Plane Coordinate System, North Zone, North American Datum 1983/2007. The lineal dimensions as contained herein are based upon the "U.S. Survey Foot."
  - 2) Ground elevations are based on an observed GPS elevation (NAVD 1988 DATUM).
  - 3) IMPROVEMENTS: See LOCATION DRAWING for all visible improvements within 500' of disturbed area.
  - 4) SURFACE USE: RANGELAND
  - 5) INSTRUMENT OPERATOR: BRIAN ROTTINGHAUS
  - 6) NEAREST EXISTING WELL: CASTOR LC26-75HN, 901' SW
- NEAREST CULTURAL ITEMS:  
BUILDING: 5280'+  
BUILDING UNIT: 5280'+  
HIGH OCCUPANCY BUILDING UNIT: 5280'+  
DESIGNATED OUTSIDE ACTIVITY AREA: 5280'+  
PUBLIC ROAD: 5280'+  
ABOVEGROUND UTILITY: 370' S  
RAILROAD: 5280'+  
PROPERTY LINE: 428' E

**SURFACE LOCATION**  
LAT: 40.71561°N  
LONG: 103.94172°W  
PDOP: 1.6  
ELEV: 4848'  
1/4, 1/4: SW1/4 SE1/4

**BOTTOM HOLE**  
LAT: 40.70197°N  
LONG: 103.94204°W

## LEGEND

- = ALIQUOT MONUMENT AS DESCRIBED  
○ = CALCULATED POSITION

## SHEET 1 OF 2

Kyle E. Rutz-On behalf of  
Colorado Licensed Professional Land Surveyor No. 38307  
DATE: 10/6/2014  
PROJECT#: 2013186

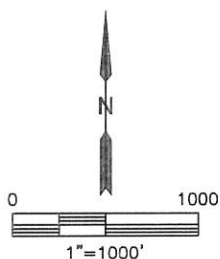
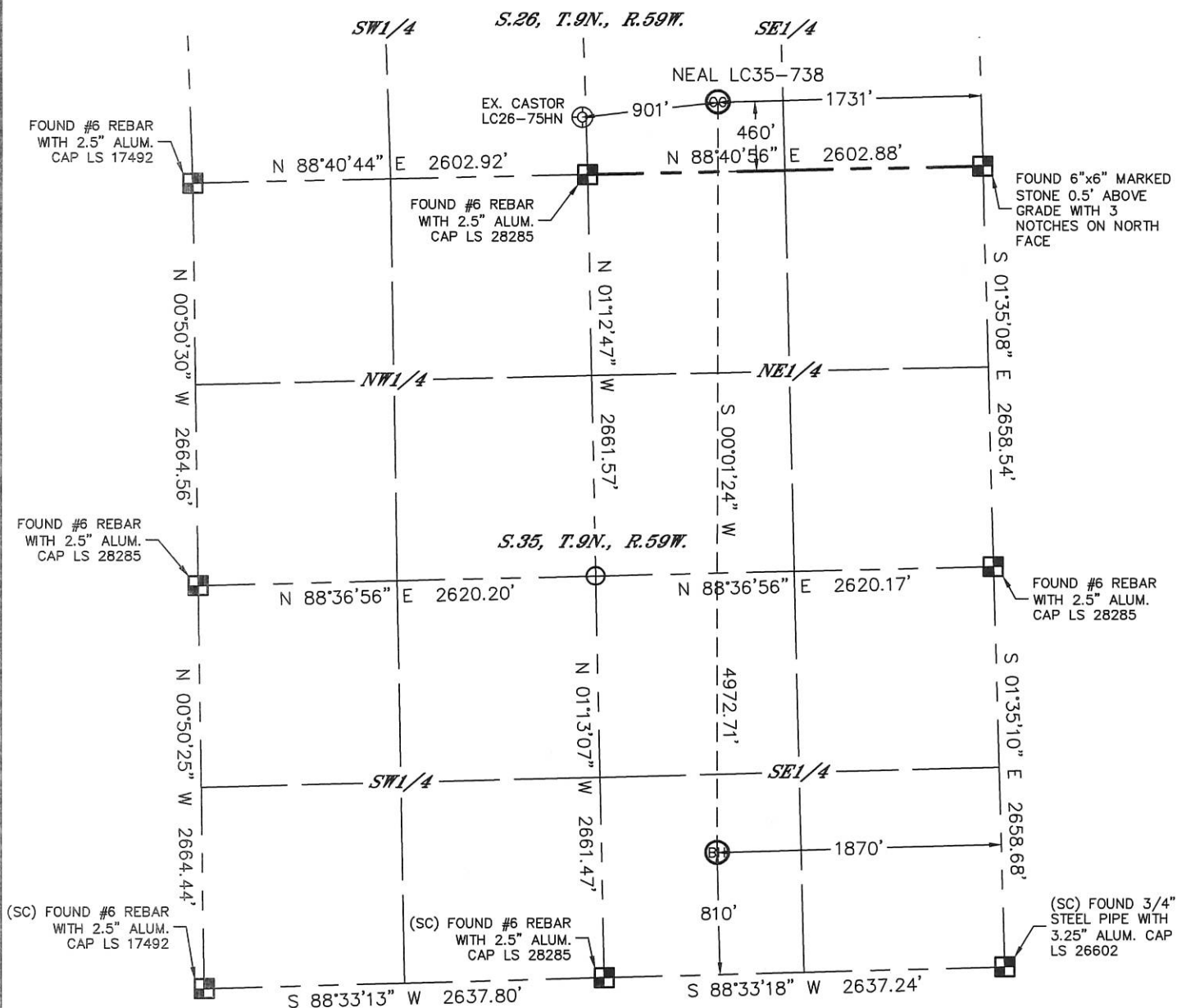


Lat40°, Inc. 1635 Foxtrail Drive, Suite 325 Loveland, CO 970-776-3321



# WELL LOCATION CERTIFICATE

THIS MAP DOES NOT REPRESENT A BOUNDARY SURVEY

SECTION: 26  
TOWNSHIP: 9N  
RANGE: 59W



### LEGEND

-  = ALIQUOT MONUMENT AS DESCRIBED  
 = CALCULATED POSITION

*SHEET 2 OF 2*

Kyle E. Rutz—On behalf of COLORADO LAND SURVEYORS  
Colorado Licensed Professional Land Surveyor No. 38307  
DATE: rev9/25/2014  
PROJECT#: 2013186



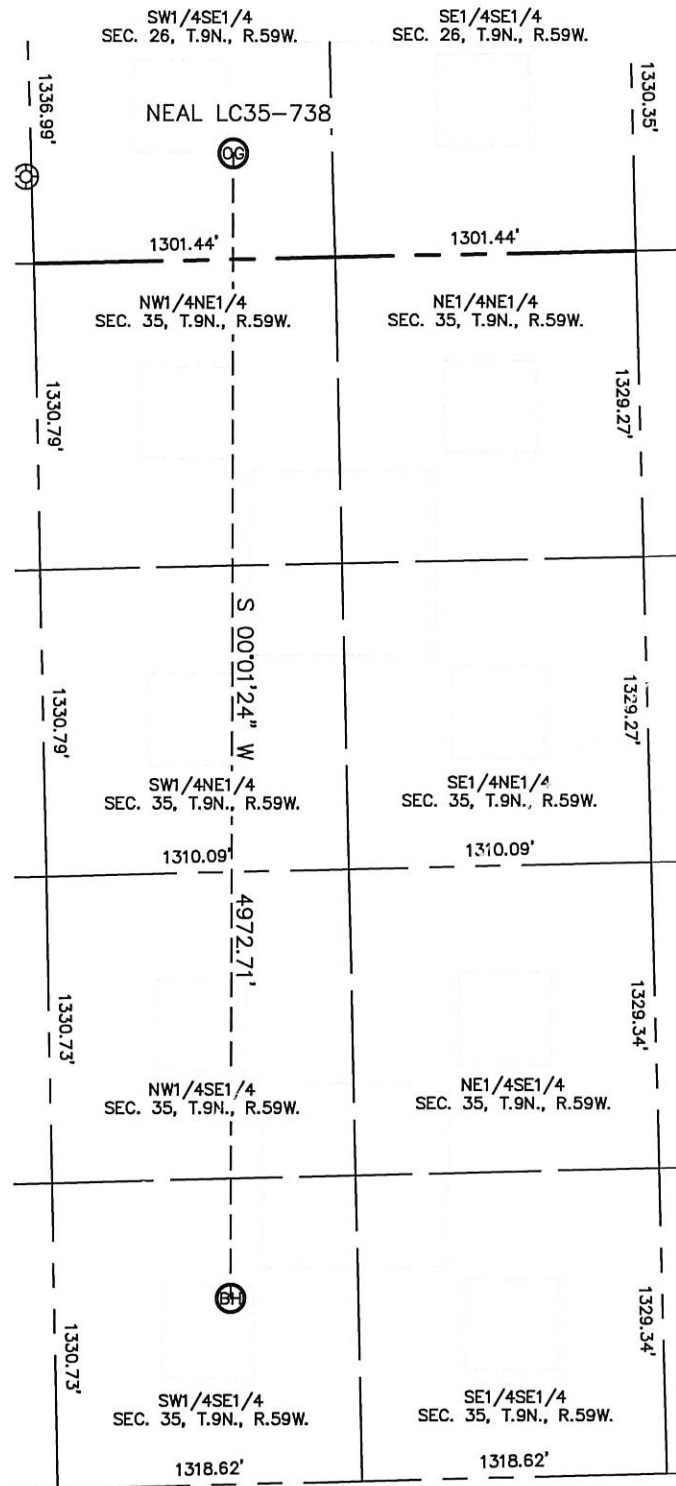


Lat40°, Inc. 1635 Foxtrail Drive, Suite 325 Loveland, CO 970-776-3321

## SITE SKETCH

NEAL LC35-738

SECTION: 26  
TOWNSHIP: 9N  
RANGE: 59W



NOTE: NO EXISTING WELLS ADJACENT TO PROPOSED WELL BORE.

DATE: rev9/25/2014  
PROJECT#: 2013186