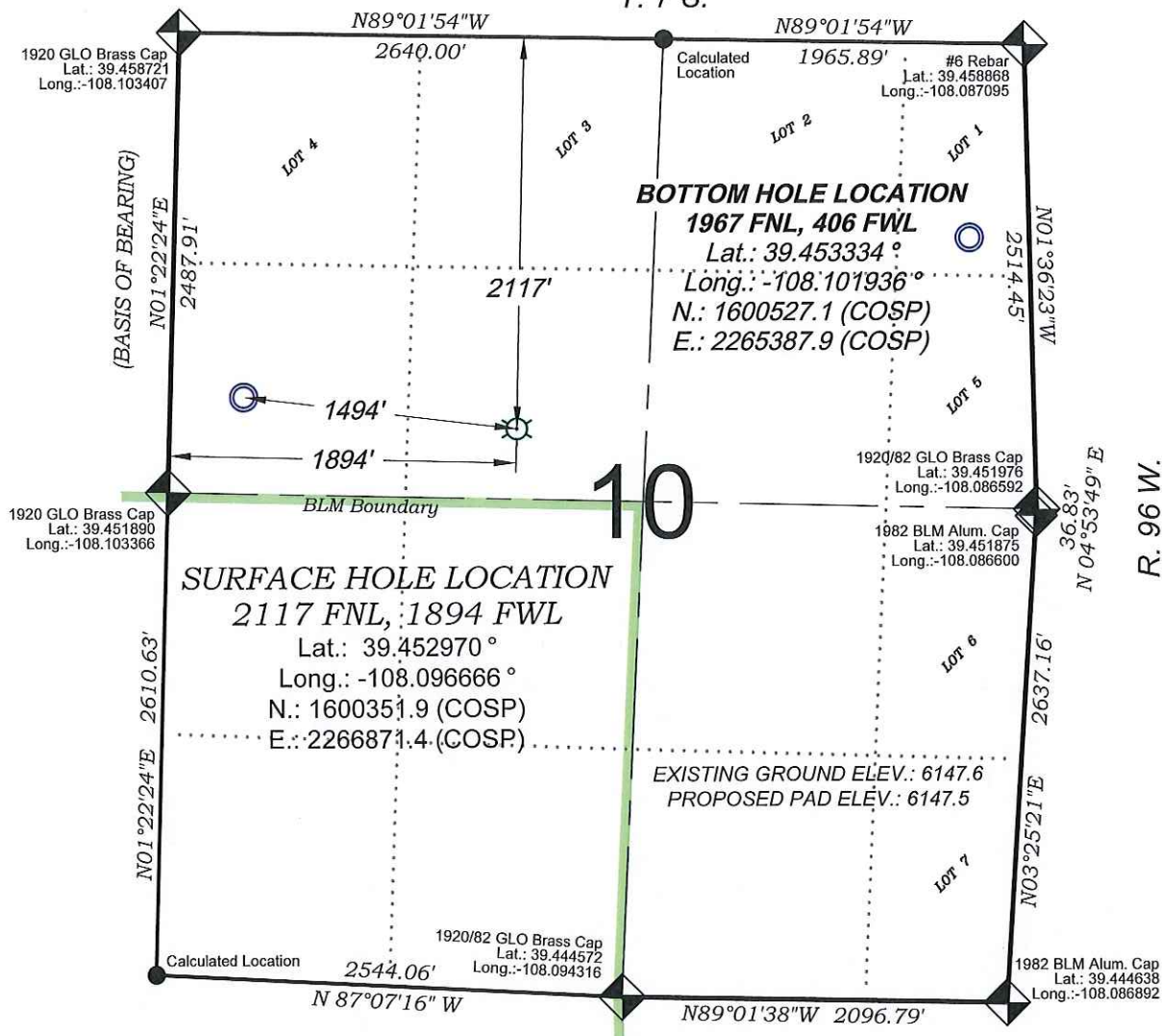
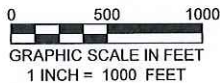


Federal GM 412-10

T. 7 S.



SEE CONSTRUCTION LAYOUT
 PLAT FOR VISIBLE IMPROVEMENTS
 WITHIN 500' OF THIS LOCATION



- LEGEND -

- FIELD LOCATED SECTION MONUMENTS AS DESCRIBED
- FIELD SURVEYED WELL LOCATION
- CALCULATED BOTTOM HOLE LOCATION
- CALCULATED SECTION CORNER LOCATION

SURVEYORS STATEMENT

I, MICHAEL J. LANGHORNE, A REGISTERED LAND SURVEYOR IN THE STATE OF COLORADO DO HEREBY CERTIFY THAT THE SURVEY SHOWN HEREON WAS PREPARED UNDER MY DIRECT SUPERVISION AND HAS BEEN STAKED ON THE GROUND AS SHOWN ON THE PLAT AND CHECKING THAT THIS MAP IS A TRUE REPRESENTATION THEREOF.

Michael J. Langhorne

MICHAEL J. LANGHORNE, COLORADO REGISTRATION NO. 36572
 FOR AND ON BEHALF OF
 BOOKCLIFF SURVEY SERVICES, INC.

REFERENCES

- 1) Dependent Resurvey and Extension Survey T. 7 S., R. 95 W., 6th P.M. (GLO PLAT)
- 2) U.S.G.S. QUAD: Parachute, CO

NOTES

- 1) ELEVATIONS BASED ON N.A.V.D. 1988 PUBLISHED COORDINATES.
- 2) LATITUDES AND LONGITUDES ARE BASE ON NAD 83, PUBLISHED COORDINATES
- 3) STATE PLANE COORDINATES ARE BASED ON COLORADO CENTRAL ZONE, U.S. SURVEY FEET.
- 4) ELEVATION MASK SET TO 15"
- 5) GPS OPERATOR J. KIRKPATRICK, OBSERVED A PDOP OF 2.2 ON SURVEY POINT NUMBER 435.
- 6) SURFACE AND BOTTOM HOLE LOCATIONS ARE MEASURED 90° FROM SECTION LINES.

WELL LOCATION PLAT Prepared for:
WPXENERGY.

WPX Energy Rocky Mountain, LLC

SE1/4 NW1/4, SECTION 10
 T. 7 S., R. 96 W. of the 6th. P.M.
 GARFIELD COUNTY, COLORADO

136 East Third Street
 Rifle, Colorado
 81650 Ph. (970)
 625-2720 Fax (970)
 625-2773



BOOKCLIFF
 Survey Services, Inc.

SURVEY DATE: 7/29/14
 MAP DATE: 9/23/14
 SCALE: 1" = 1000'
 PLAT: 1 of 1
 PROJECT: Valley