



August 6, 2014

Mr. Matt Lepore, Director
Colorado Oil and Gas Conservation Commission
1120 Lincoln Street
Suite 801
Denver, Colorado 80203

**RE: COGCC Rule 318A.e.: Proposed Wellbore Spacing Unit
Burroughs South #13 Well
SENE Section 14, Township 7 North, Range 65 West
Weld County, Colorado**

Dear Mr. Lepore:

Extraction Oil & Gas is planning to drill the above referenced well in accordance with the provisions set out in COGCC Rule 318A.e. Extraction's proposed wellbore spacing unit consists of:

Burroughs South #13
S/2 N/2 & N/2 S/2 Sec 14-T7N-R65W & S/2 N/2 & N/2 S/2 Sec 15-T7N-R65W
Containing 640 acres more or less.

Extraction is not the only owner within the proposed wellbore spacing unit and has provided notice to the remaining owner(s) within this spacing unit, as required by COGCC Rule 318A.e.(6). Copies of the required notification letters are on file at Extraction's office. The required thirty (30) day notice period has elapsed absent the receipt by Extraction of any objection to their proposal by the owner(s) within the proposed spacing unit for the subject well.

Enclosed is the Proposed Spacing Unit Plat to assist in your review and approval of Extraction's proposed Application for Permit to Drill (APD) for the Burroughs South #13 well. Extraction respectfully requests the COGCC review the enclosed information and approve the requested exception location waiver and APD for the Burroughs South #13 well.

Respectfully,

Nick Curran
Regulatory Tech
Agent for Extraction Oil & Gas

Attachment: Proposed Spacing Unit Plat

T7N, R65W, 6th P.M.

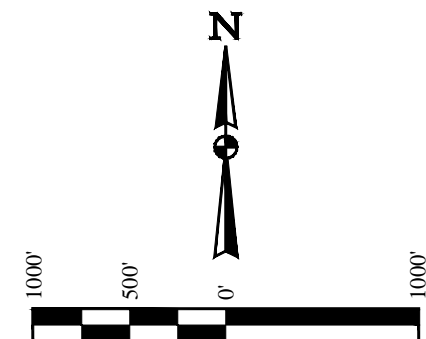
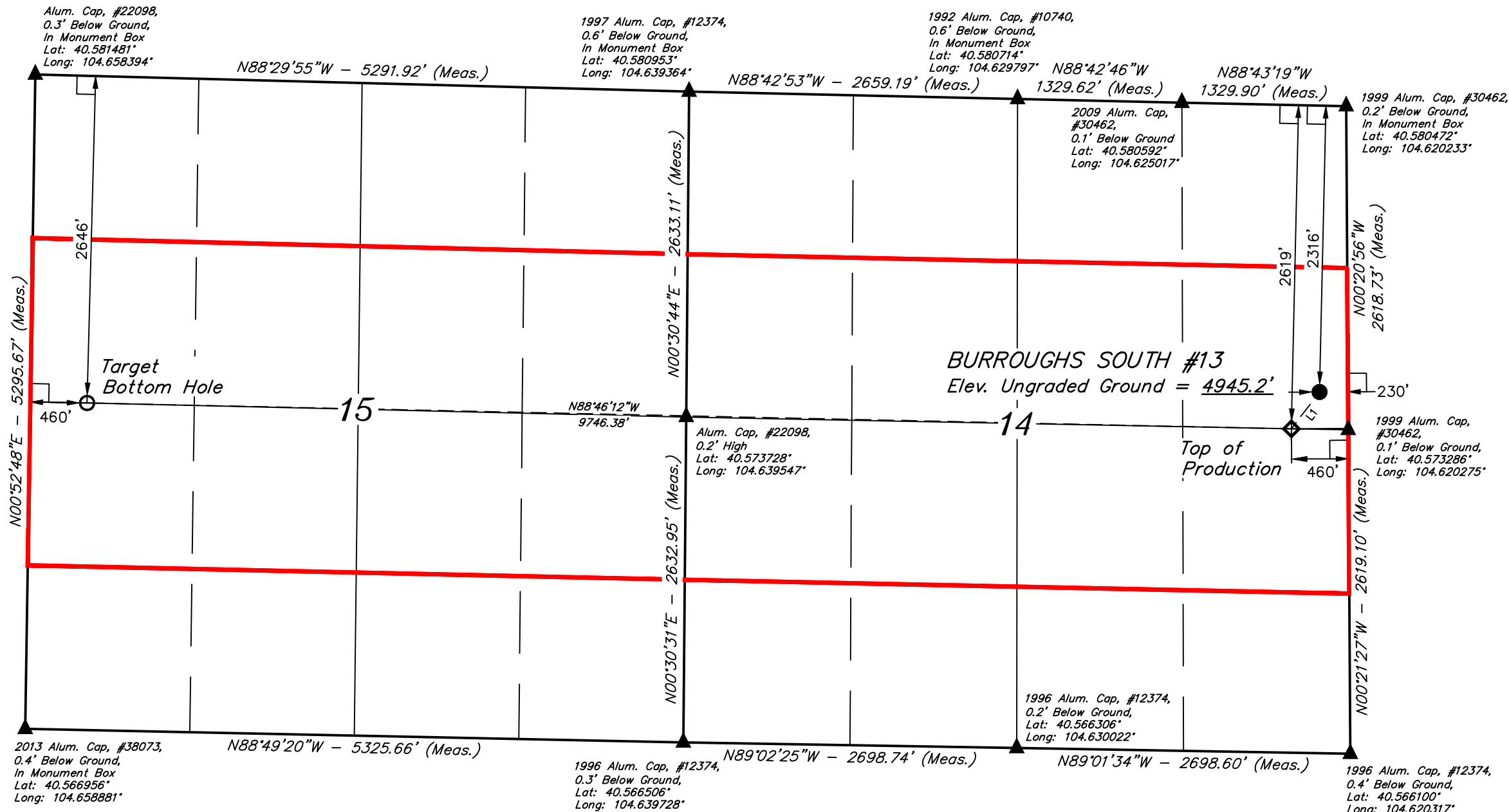
Proposed Spacing Unit: S/2 N/2 & N/2 S/2 Sec 14-T7N-R65W & S/2 N/2 & N/2 S/2 Sec 15-T7N-R65W
640 Acres

EXTRACTION OIL & GAS

BURROUGHS SOUTH #13
SE 1/4 NE 1/4, SECTION 14, T7N, R65W, 6th P.M.
WELD COUNTY, COLORADO

BASIS OF BEARINGS
BASIS OF BEARINGS IS A G.P.S. OBSERVATION

BASIS OF ELEVATION
USGS COOPERATIVE BASE NETWORK CONTROL STATION,
DESIGNATION 'VERMILYEA'. NGS DATA SHEET LISTS THE NAVD
88 ELEVATION AS BEING 5026 FEET.



LINE TABLE		
LINE	DIRECTION	LENGTH
L1	S37°24'51"W	375.47'

- LEGEND:**
- └─┘ = 90° SYMBOL
 - = PROPOSED WELLHEAD.
 - = TARGET BOTTOM HOLE.
 - ▲ = SECTION CORNERS LOCATED.
 - ◆ = TOP OF PRODUCTION.

PDOP = 1.1

NAD 83 (TARGET BOTTOM HOLE)	NAD 83 (TOP OF PRODUCTION)	NAD 83 (SURFACE LOCATION)
LATITUDE = 40°34'27.03" (40.574175)	LATITUDE = 40°34'23.97" (40.573325)	LATITUDE = 40°34'26.89" (40.574136)
LONGITUDE = 104°39'25.14" (104.656983)	LONGITUDE = 104°37'18.95" (104.621931)	LONGITUDE = 104°37'15.95" (104.621097)
NAD 27 (TARGET BOTTOM HOLE)	NAD 27 (TOP OF PRODUCTION)	NAD 27 (SURFACE LOCATION)
LATITUDE = 40°34'27.10" (40.574194)	LATITUDE = 40°34'24.04" (40.573344)	LATITUDE = 40°34'26.96" (40.574156)
LONGITUDE = 104°39'23.28" (104.656467)	LONGITUDE = 104°37'17.09" (104.621414)	LONGITUDE = 104°37'14.09" (104.620581)

CERTIFICATE
THIS IS TO CERTIFY THAT THE ABOVE PLAN WAS PREPARED FROM FIELD NOTES OF ACTUAL SURVEYS MADE BY ME OR UNDER MY SUPERVISION AND THAT THE SAME ARE TRUE AND CORRECT TO THE BEST OF MY KNOWLEDGE AND BELIEF.

[Signature]
REGISTERED LAND SURVEYOR
REGISTRATION NO. 28285
STATE OF COLORADO

UINTAH
ENGINEERING & LAND SURVEYING

UELS, LLC
Corporate Office * 85 South 200 East
Vernal, UT 84078 * (435) 789-1017

SURVEYED BY: DALLAS NIELSEN, L.P.	DATE: 06-04-14
DRAWN BY: J.W.	DATE DRAWN: 10-09-14
SCALE: 1" = 1000'	REVISED: 00-00-00

PROPOSED SPACING UNIT