

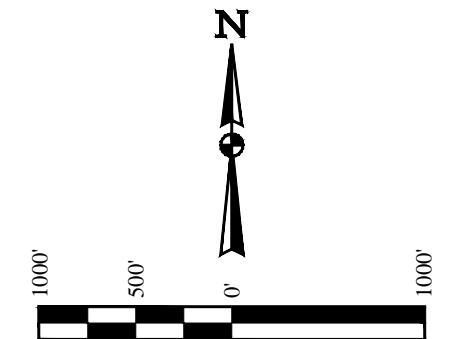
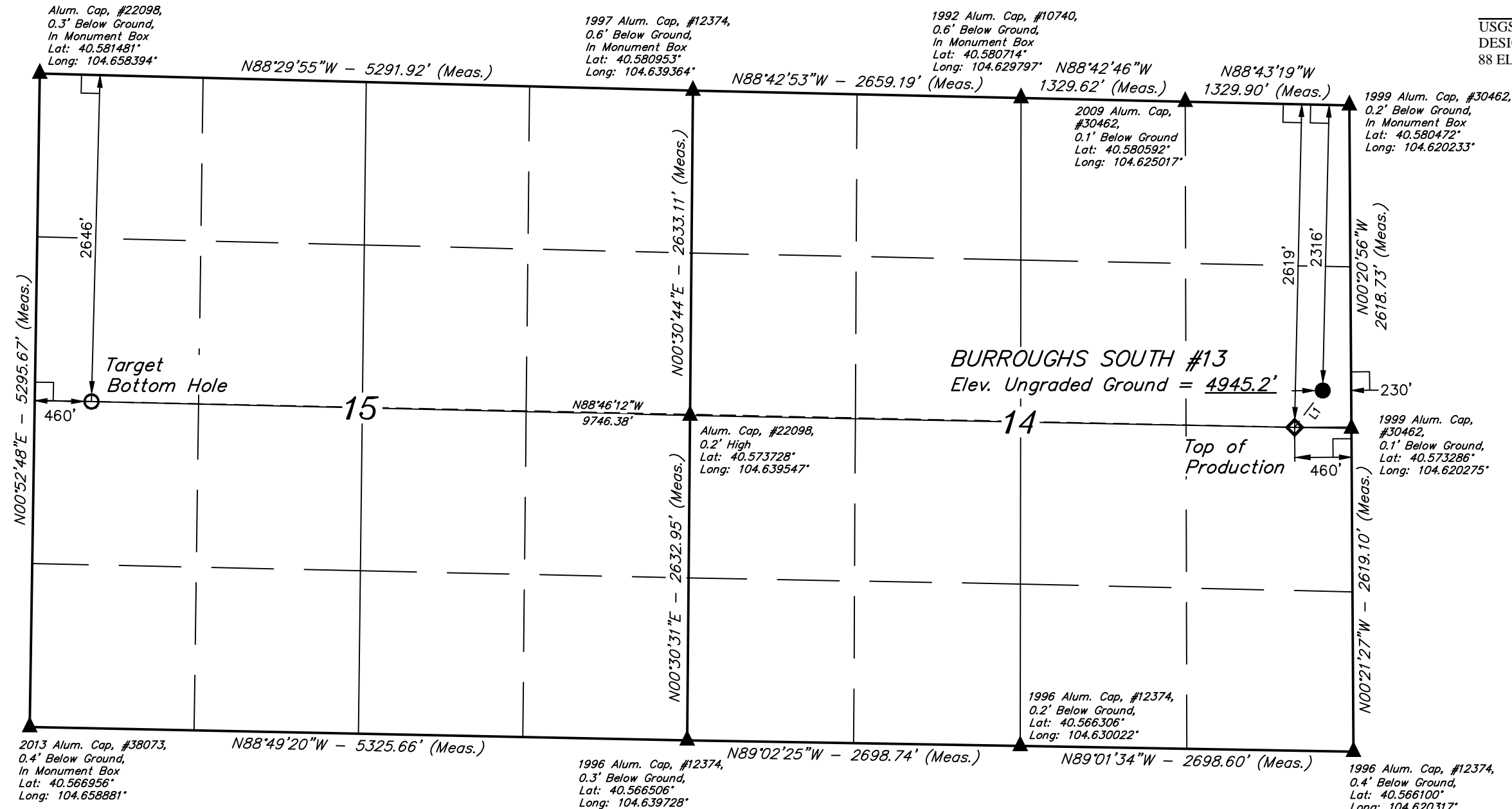
T7N, R65W, 6th P.M.

EXTRACTION OIL & GAS

BURROUGHS SOUTH #13  
SE 1/4 NE 1/4, SECTION 14, T7N, R65W, 6th P.M.  
WELD COUNTY, COLORADO

BASIS OF BEARINGS  
BASIS OF ELEVATIONS IS A G.P.S. OBSERVATION

BASIS OF ELEVATION  
USGS COOPERATIVE BASE NETWORK CONTROL STATION,  
DESIGNATION 'VERMILYEA'. NGS DATA SHEET LISTS THE NAVD  
88 ELEVATION AS BEING 5026 FEET.



LINE TABLE		
LINE	DIRECTION	LENGTH
L1	S37°24'51"W	375.47'

- LEGEND:**
- └─┘ = 90° SYMBOL
  - = PROPOSED WELLHEAD.
  - = TARGET BOTTOM HOLE.
  - ▲ = SECTION CORNERS LOCATED.
  - ◆ = TOP OF PRODUCTION.

PDOP = 1.1

NAD 83 (TARGET BOTTOM HOLE)	NAD 83 (TOP OF PRODUCTION)	NAD 83 (SURFACE LOCATION)
LATITUDE = 40°34'27.03" (40.574175)	LATITUDE = 40°34'23.97" (40.573325)	LATITUDE = 40°34'26.89" (40.574136)
LONGITUDE = 104°39'25.14" (104.656983)	LONGITUDE = 104°37'18.95" (104.621931)	LONGITUDE = 104°37'15.95" (104.621097)
NAD 27 (TARGET BOTTOM HOLE)	NAD 27 (TOP OF PRODUCTION)	NAD 27 (SURFACE LOCATION)
LATITUDE = 40°34'27.10" (40.574194)	LATITUDE = 40°34'24.04" (40.573344)	LATITUDE = 40°34'26.96" (40.574156)
LONGITUDE = 104°39'23.28" (104.656467)	LONGITUDE = 104°37'17.09" (104.621414)	LONGITUDE = 104°37'14.09" (104.620581)

CERTIFICATE OF ACCURACY  
THIS IS TO CERTIFY THAT THE ABOVE PLAT WAS PREPARED FROM FIELD NOTES OF ACTUAL SURVEYS MADE BY ME OR UNDER MY SUPERVISION AND THAT THE SAME ARE TRUE AND CORRECT TO THE BEST OF MY KNOWLEDGE AND BELIEF.

*[Signature]*  
REGISTERED LAND SURVEYOR  
REGISTRATION NO. 28285  
STATE OF COLORADO  
06-04-14



**UELS, LLC**  
Corporate Office \* 85 South 200 East  
Vernal, UT 84078 \* (435) 789-1017

SURVEYED BY: DALLAS NIELSEN, L.P.	DATE: 06-04-14
DRAWN BY: K.B.	DATE DRAWN: 06-24-14
SCALE: 1" = 1000'	REVISED: 09-30-14 J.W.

**WELL LOCATION PLAT**