

BILL BARRETT CORPORATION

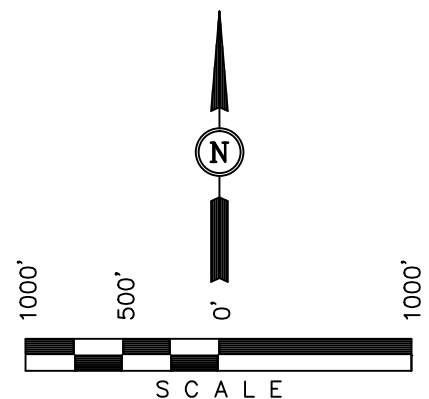
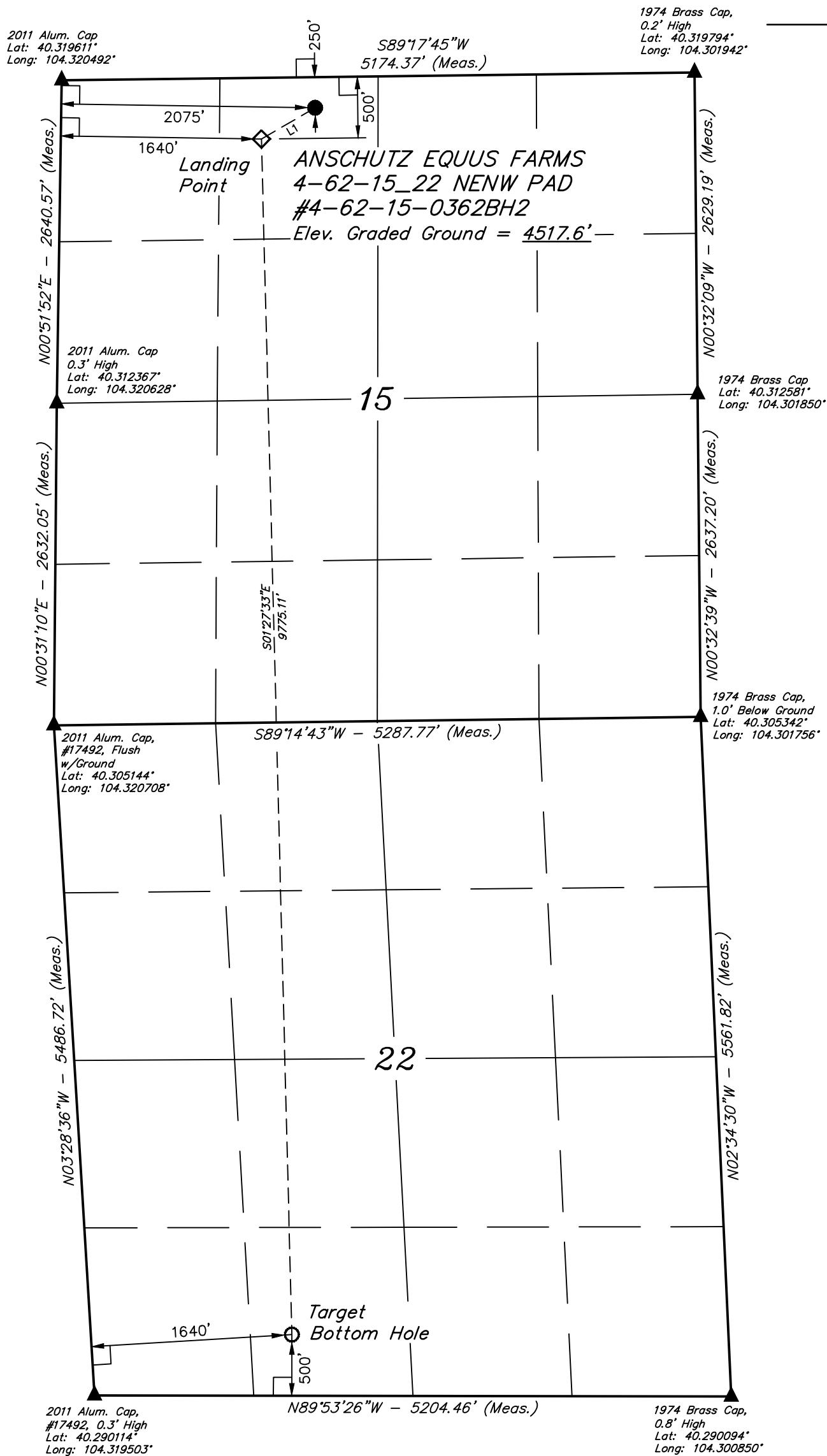
Well location, ANSCHUTZ EQUUS FARMS  
4-62-15\_22 NENW PAD #4-62-15-0362BH2,  
located as shown in the NE 1/4 NW 1/4 of  
Section 15, T4N, R62W, 6th P.M., Weld County,  
Colorado.

## BASIS OF ELEVATION

SPOT ELEVATION LOCATED AT THE NORTHEAST CORNER OF SECTION 24, T5N, R62W, 6th P.M. TAKEN FROM THE POINT OF ROCKS, QUADRANGLE, COLORADO, WELD COUNTY, 7.5 MINUTE QUAD (TOPOGRAPHIC MAP) PUBLISHED BY THE UNITED STATES DEPARTMENT OF THE INTERIOR, GEOLOGICAL SURVEY. SAID ELEVATION IS MARKED AS BEING 4530 FEET.

## BASIS OF BEARINGS

BASIS OF BEARINGS IS A G.P.S. OBSERVATION.



LINE TABLE		
LINE	DIRECTION	LENGTH
L1	S59°47'21"W	507.99'

LEGEND:

- L = 90° SYMBOL  
 ● = PROPOSED WELL HEAD.  
 ◆ = PROPOSED LANDING POINT.  
 ○ = PROPOSED TARGET BOTTOM HOLE.  
 ▲ = SECTION CORNERS LOCATED.

CERTIFICATE

THIS IS TO CERTIFY THAT THE ABOVE PLAT WAS PREPARED FROM  
FIELD NOTES OF ACTUAL SURVEYS MADE BY ME OR UNDER MY  
SUPERVISION AND THAT THE SAME ARE TRUE AND CORRECT TO THE  
BEST OF MY KNOWLEDGE AND BELIEF.

REGISTERED LAND SURVEYOR  
REGISTRATION NO. 28285  
STATE OF COLORADO

REVISED: 10-22-14 J.W.

<b>NAD 83 (TARGET BOTTOM HOLE)</b>	<b>NAD 83 (LANDING POINT)</b>	<b>NAD 83 (SURFACE LOCATION)</b>
LATITUDE = 40°17'29.33" (40.291481)	LATITUDE = 40°19'05.87" (40.318297)	LATITUDE = 40°19'08.40" (40.319000)
LONGITUDE = 104°18'49.40" (104.313722)	LONGITUDE = 104°18'52.69" (104.314636)	LONGITUDE = 104°18'47.03" (104.313064)
<b>NAD 27 (TARGET BOTTOM HOLE)</b>	<b>NAD 27 (LANDING POINT)</b>	<b>NAD 27 (SURFACE LOCATION)</b>
LATITUDE = 40°17'29.40" (40.291500)	LATITUDE = 40°19'05.94" (40.318317)	LATITUDE = 40°19'08.47" (40.319019)
LONGITUDE = 104°18'47.58" (104.313217)	LONGITUDE = 104°18'50.86" (104.314128)	LONGITUDE = 104°18'45.20" (104.312556)
<b>STATE PLANE NAD 83</b>	<b>STATE PLANE NAD 83</b>	<b>STATE PLANE NAD 83</b>
N: 1351241.08 E: 3330909.32	N: 1361006.03 E: 3330524.07	N: 1361267.68 E: 3330959.34
<b>STATE PLANE NAD 27</b>	<b>STATE PLANE NAD 27</b>	<b>STATE PLANE NAD 27</b>
N: 351243.69 E: 2331059.62	N: 361008.38 E: 2330674.27	N: 361270.02 E: 2331109.54

UTAH ENGINEERING & LAND SURVEYING 85 SOUTH 200 EAST - VERNAL, UTAH 84078 (435) 789-1017		
SCALE 1" = 1000'	DATE SURVEYED: 10-21-14	DATE DRAWN: 02-17-14
PARTY TROY BEASLEY. G.B. J.W.	REFERENCES G.L.O. PLAT	
WEATHER COLD	FILE BILL BARRETT CORPORATION	