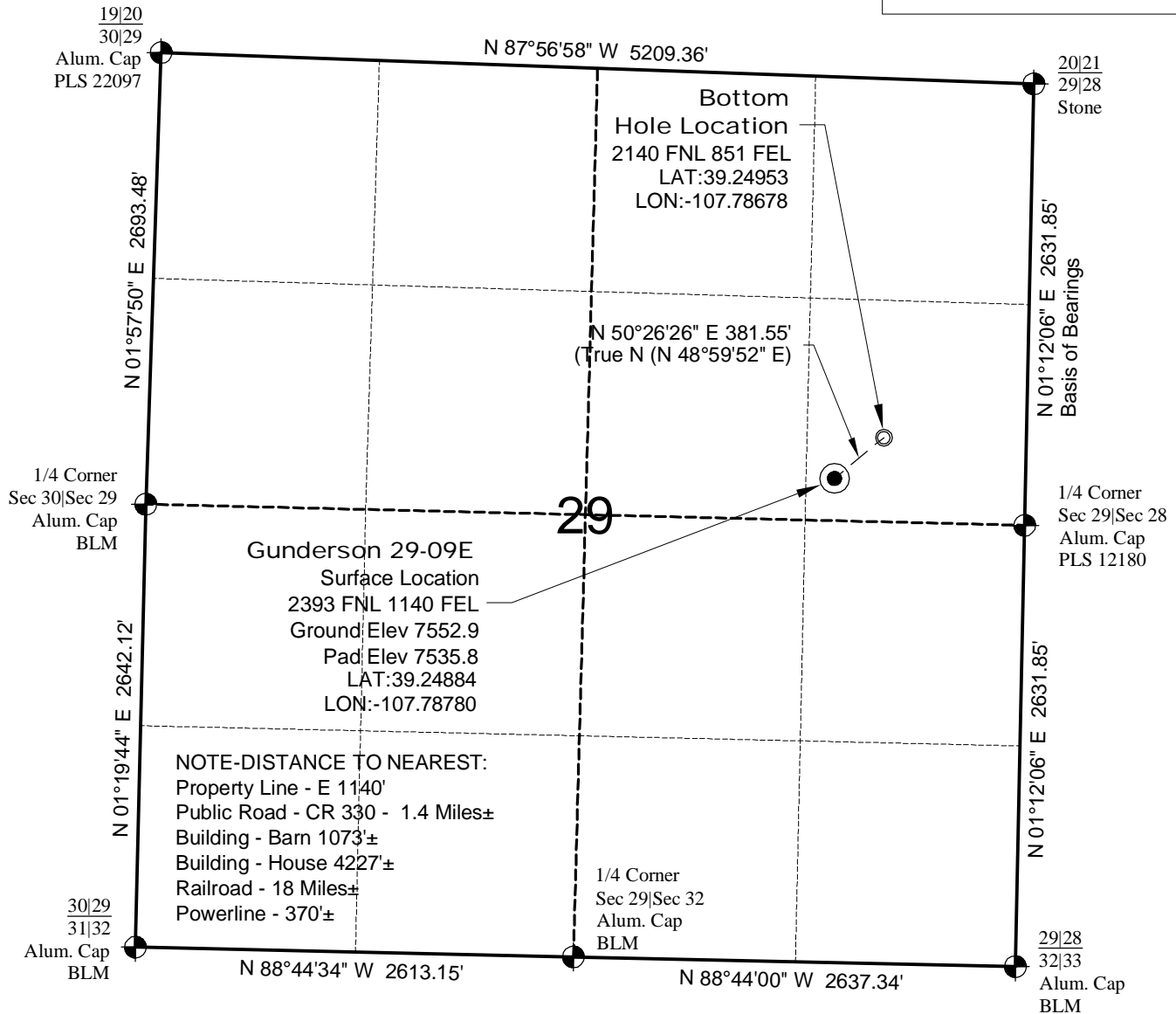


WELL LOCATION MAP

**GUNDERSON
29-09 PAD**



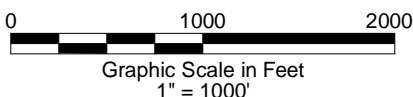
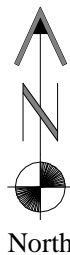
NOTES

- 1.) Horizontal and vertical datum based on Mesa County control point "SN23" with an elevation of 8008.15. NAVD 1988.
- 2.) All directions, distances, and dimensions shown hereon are based on coordinates from the "Colorado coordinate system of 1983 central zone" (article 52 of title 38, C.R.S.).
- 3.) All section line dimensions shown hereon are based on field measurements of existing monuments and/or physical evidence found in the field unless otherwise indicated. Refer to land survey plats, and subdivision plats deposited in Mesa County & well plats filed with the COGCC.
- 4.) Physical features shown hereon are for graphical representation only.
- 5.) See Form 2A by others for visible improvements within 500' of wellhead.
- 6.) Distances to nearest section lines are measured perpendicularly.
- 7.) This is not a land survey nor land survey plat.
- 8.) Date of Survey 7/25/14; Date of Drawing 9/12/14. REV 0

PDOP Reading: 1.0 Instrument Operator: Eric Purcell

SURVEYOR'S STATEMENT

The undersigned hereby states that the well location shown hereon was staked on the ground based on existing monumentation and/or physical evidence found in the field and is correct to the best of my knowledge, information and belief.



GEOSURV
LAND SURVEYING AND MAPPING
520 STACY COURT SUITE "B"
LAFAYETTE, CO. 80026
Ph 303 666 0379 Fx 303 665 6320

**PICEANCE ENERGY, LLC
GUNDERSON 29-09E**

**SL SE1/4 NE1/4 SECTION 29 T9S R93W
BHL SE1/4 NE1/4 SECTION 29 T9S R93W
6th PM MESA COUNTY COLORADO**