



Radial Cement Bond Log
Gamma-Ray
CCL

Company KERR-McGEE OIL & GAS ONSHORE LP
Well HOUSTON 17-7L
Field WATTENBERG
County WELD
State COLORADO

Company KERR-McGEE OIL & GAS ONSHORE LP
Well HOUSTON 17-7L
Field WATTENBERG
County WELD State COLORADO

Location: API # : 05-123-17564
SHL: 2139' FNL & 2123' FEL SW/NE
LAT : 40.22720 & LONG : -104.91220
SEC 17 TWP 3N RGE 67W
Permanent Datum GL Elevation 4799'
Log Measured From K.B. 14'
Drilling Measured From KB
Other Services
K.B. 4813'
D.F. 4812'
G.L. 4799'

Date 6-9-2014

Run Number ONE
Depth Driller 7405'
Depth Logger 6790'
Bottom Logged Interval 6787'
Top Log Interval Surface
Open Hole Size 7 7/8"
Type Fluid WATER
Density / Viscosity 1.0
Max. Recorded Temp. N/A
Estimated Cement Top 5800'
Time Well Ready N/A
Time Logger on Bottom N/A
Equipment Number 5432
Location GREELEY
Recorded By M. JANDREAU
Witnessed By R. THOMPSON

Borehole Record
Run Number Bit From To Size Weight From To
ONE
TWO

Casing Record
Surface String 7" Wgt/Ft 17# Top 0 Bottom 536'
Prot. String
Production String 3.5 7.7# 0 7383'
Liner

<<< Fold Here >>>

All interpretations are opinions based on inferences from electrical or other measurements and we cannot and do not guarantee the accuracy or correctness of any interpretation, and we shall not, except in the case of gross or willful negligence on our part, be liable or responsible for any loss, costs, damages, or expenses incurred or sustained by anyone resulting from any interpretation made by any of our officers, agents or employees. These interpretations are also subject to our general terms and conditions set out in our current Price Schedule.



Comments

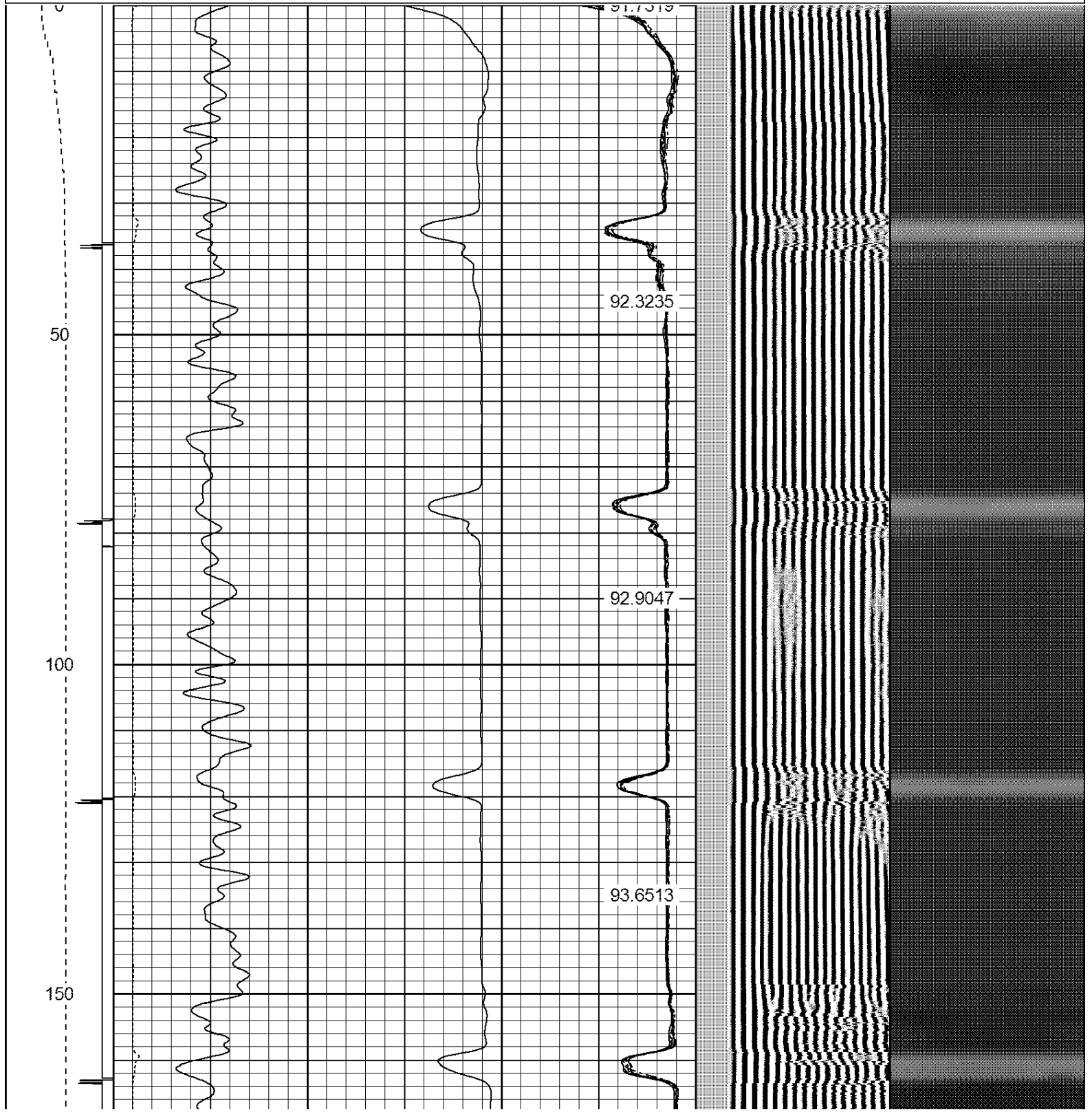
NOT CORRELATED

THANK YOU FOR USING WARRIOR.

Sensor	Offset (ft)	Schematic	Description	Len (ft)	OD (in)	Wt (lb)
CENT	19.08					

			PTS275	2.83	2.75	
HEADVOLT	16.25					
RBT	16.25					
IntTemp	14.83					
WVF3FT	11.58		RBT-Probe (Base)	8.92	2.75	90.00
WVFCAL	11.58		Probe Radii Bond Tool with Digital Telemetry			
WVFS1	11.58					
WVFS2	11.58					
WVFS3	11.58					
WVFS4	11.58					
WVFS5	11.58					
WVFS6	11.58					
WVFS7	11.58					
WVFS8	11.58					
WVF5FT	10.58					
CNLSC	6.00		CNT-Probe_B (275)	3.00	2.75	40.00
CNSSC	5.17		6 bow centralizer			
GR	4.33					
CCL	3.64					
			GR-Probe (275)	4.33	2.75	30.00
			Probe 2.75"			
GR	0.90					
Dataset: houston 17-71.db: field/well/run1/pass3 Total Length: 19.08 ft Total Weight: 160.00 lb O.D. 2.75 in						

-9	CCL	1	200	TT (usec)	800	0	AMP (mV)	100	0	AMPS1	100	200	VDL	1200	1	Cement Map	8	
LSPD (ft/min)			0	GR (cps)	200	0	AMPx5 (mV)	20	0	AMPS2	100				1			
			200	GR (cps)	400				0	AMPS4	100							
									0	AMPS5	100							
									0	AMPS6	100							
0 250									0	AMPS7	100							
									0	AMPS8	100							
											IntTemp (degF)							



200

250

300

350

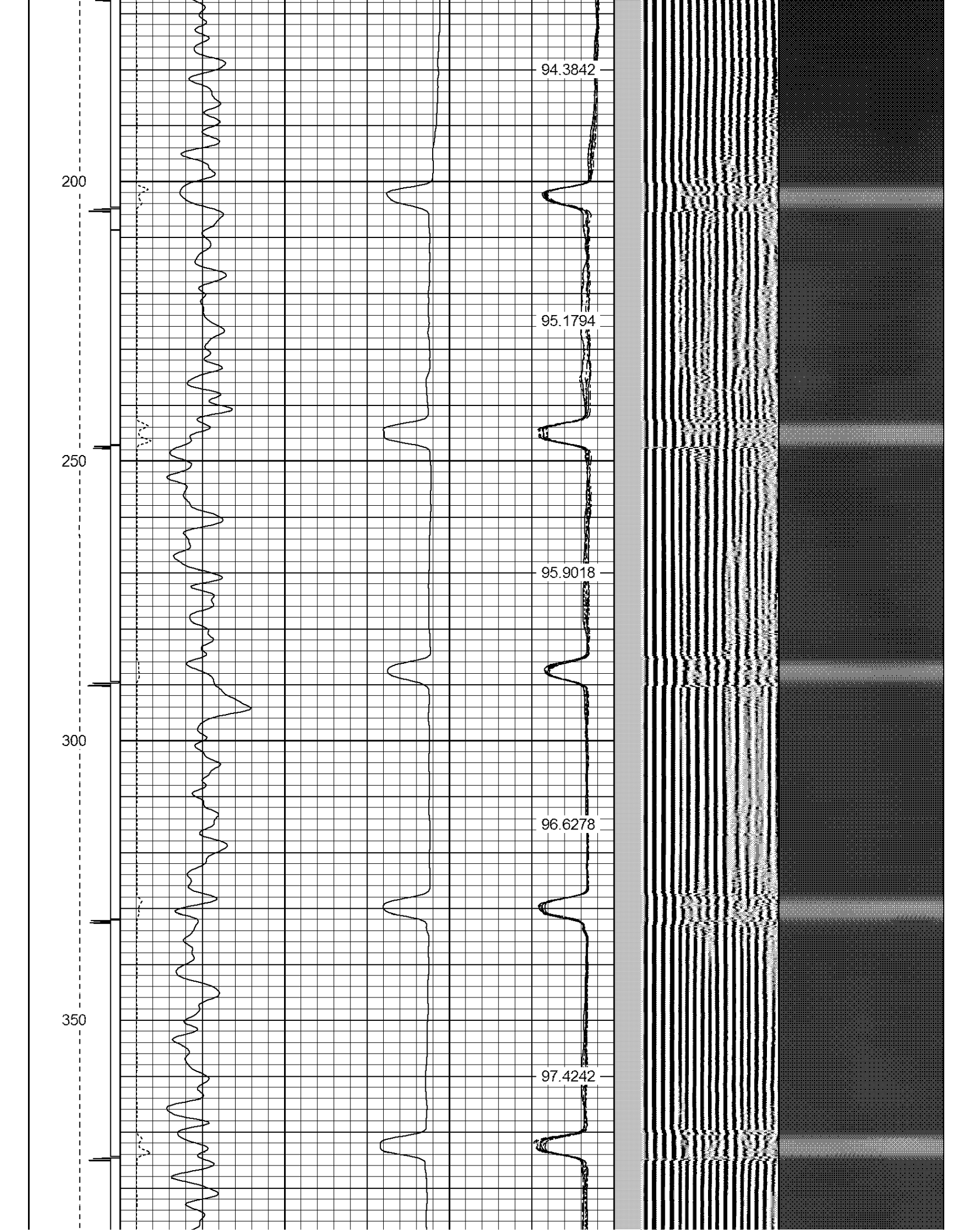
94.3842

95.1794

95.9018

96.6278

97.4242



400

450

500

550

600

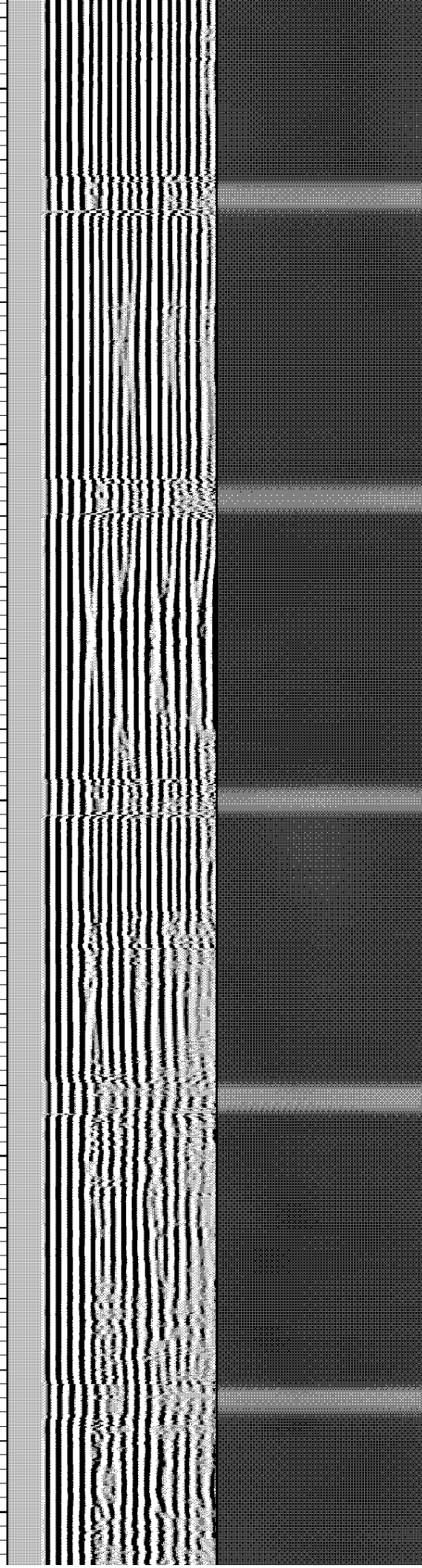
98.2811

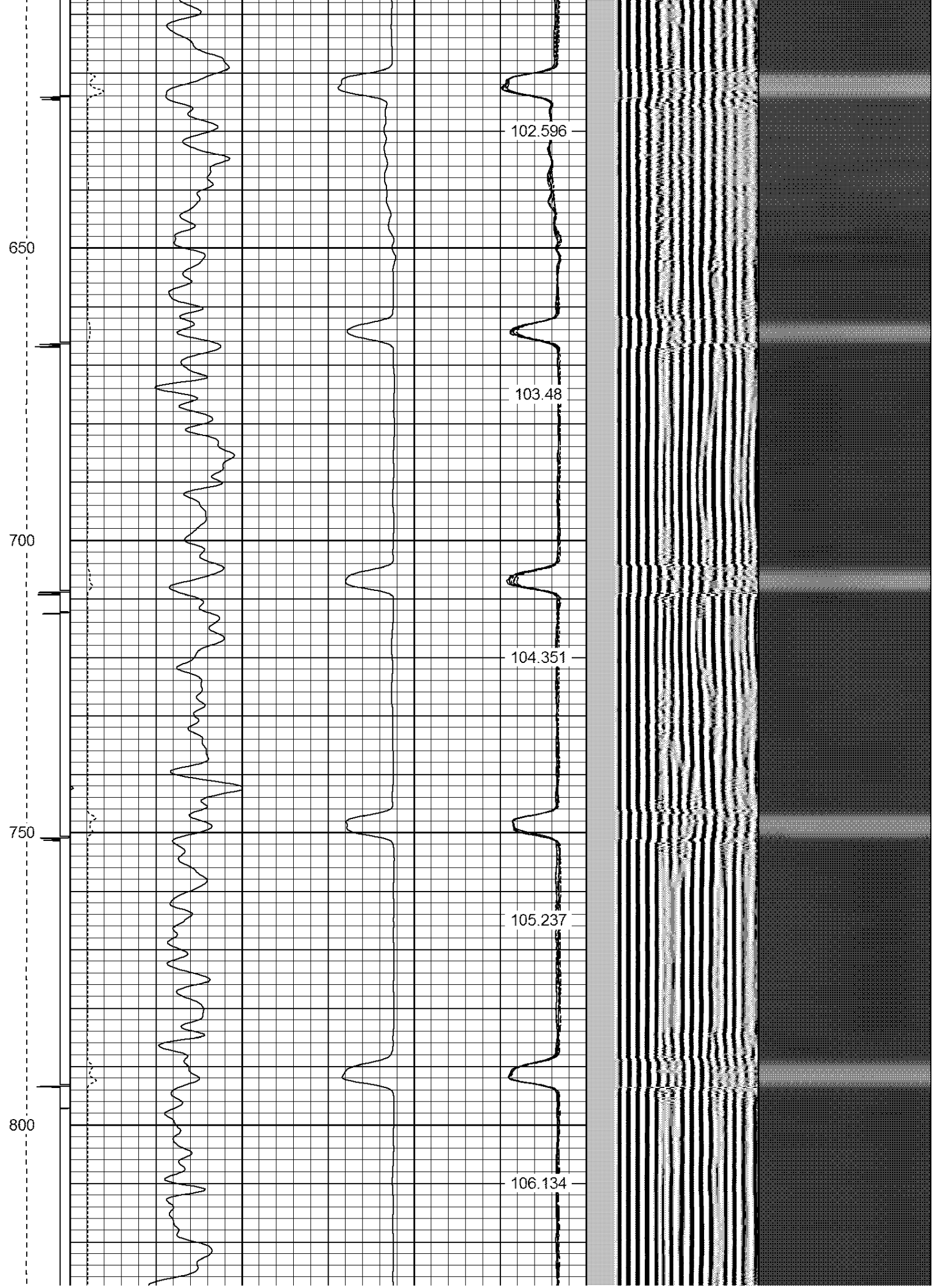
99.1652

99.9379

100.842

101.718





850

900

950

1000

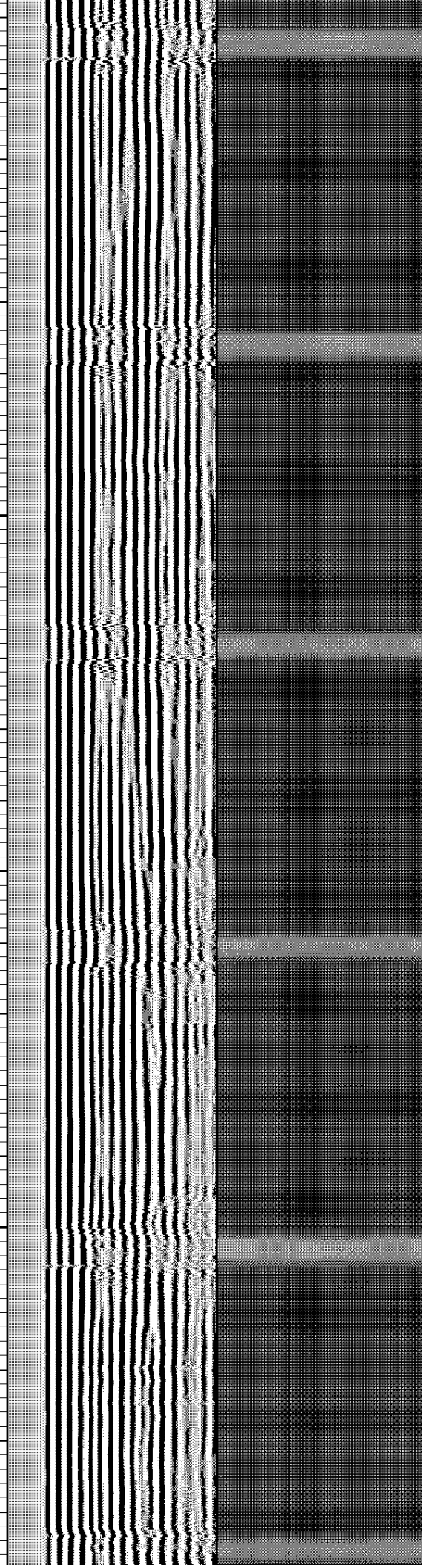
106.986

107.914

108.859

109.728

110.694



1050

1100

1150

1200

1250

111.638

112.548

113.56

114.533

115.424

1300

1350

1400

1450

116.486

117.482

118.438

119.451

120.287

12

1500

1550

1600

1650

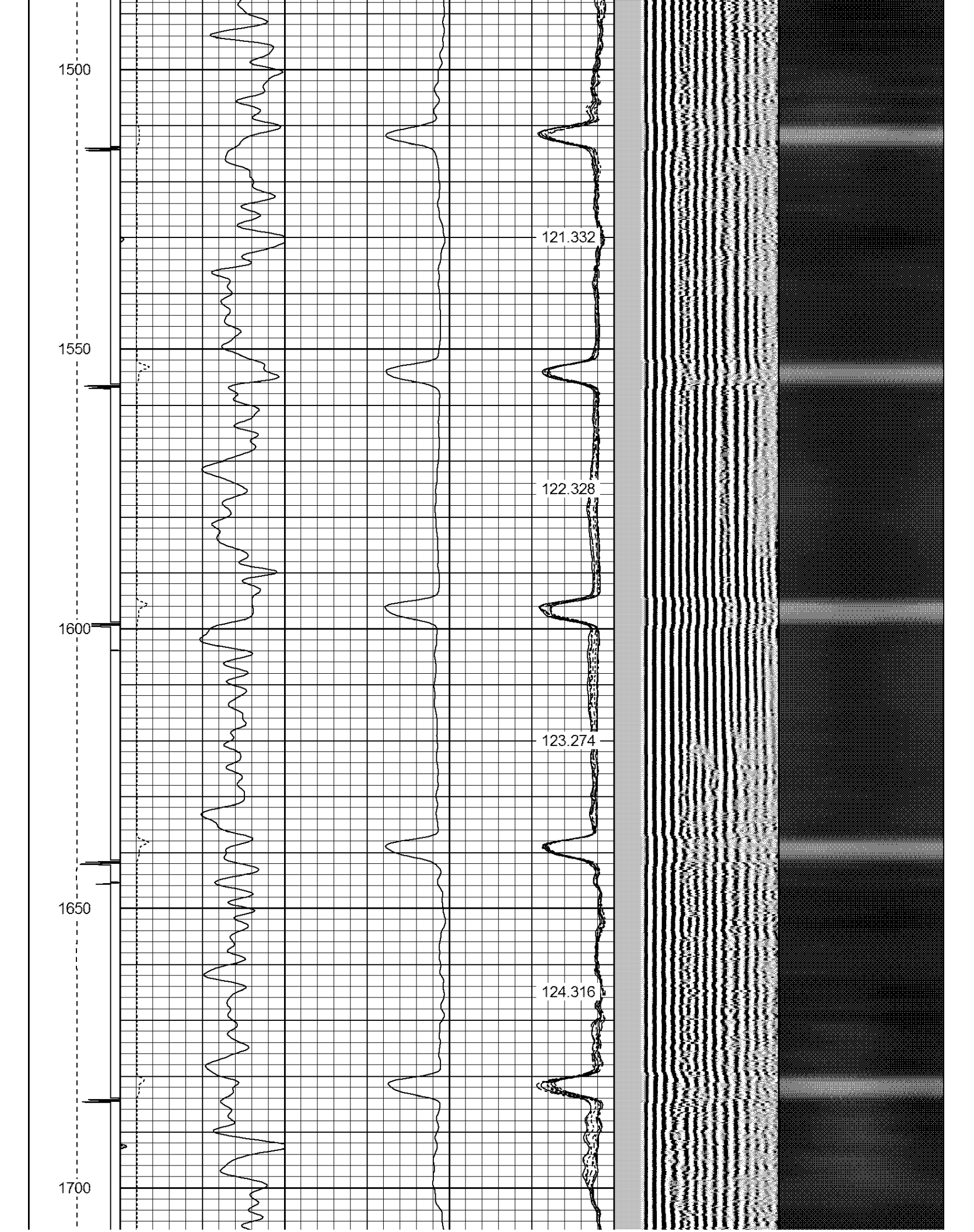
1700

121.332

122.328

123.274

124.316



1750

1800

1850

1900

125.274

126.269

127.194

128.23

129.228



1950

2000

2050

2100

130.252

131.203

132.284

133.158

134.133



2150

2200

2250

2300

2350

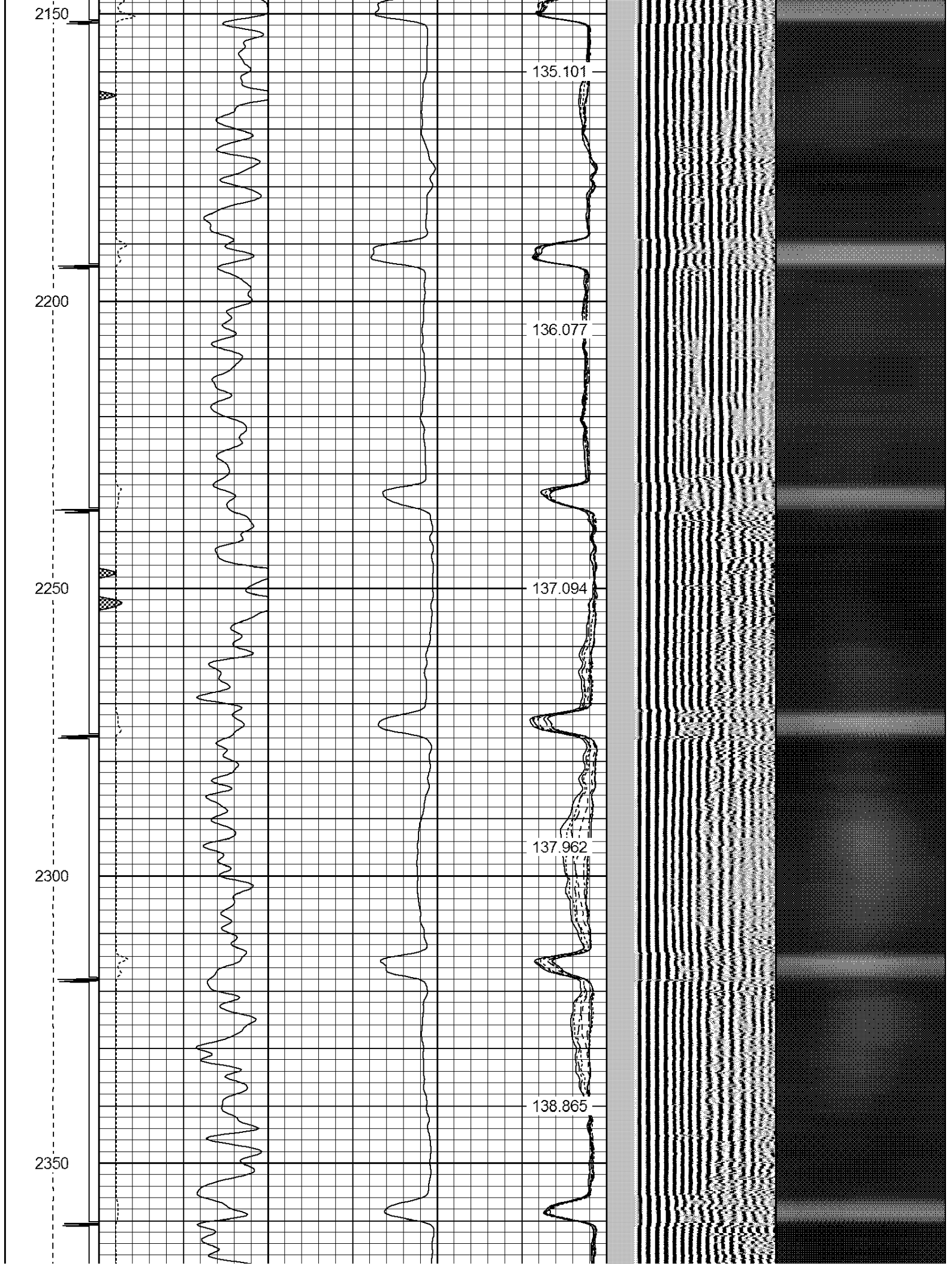
135.101

136.077

137.094

137.962

138.865



2400

2450

2500

2550

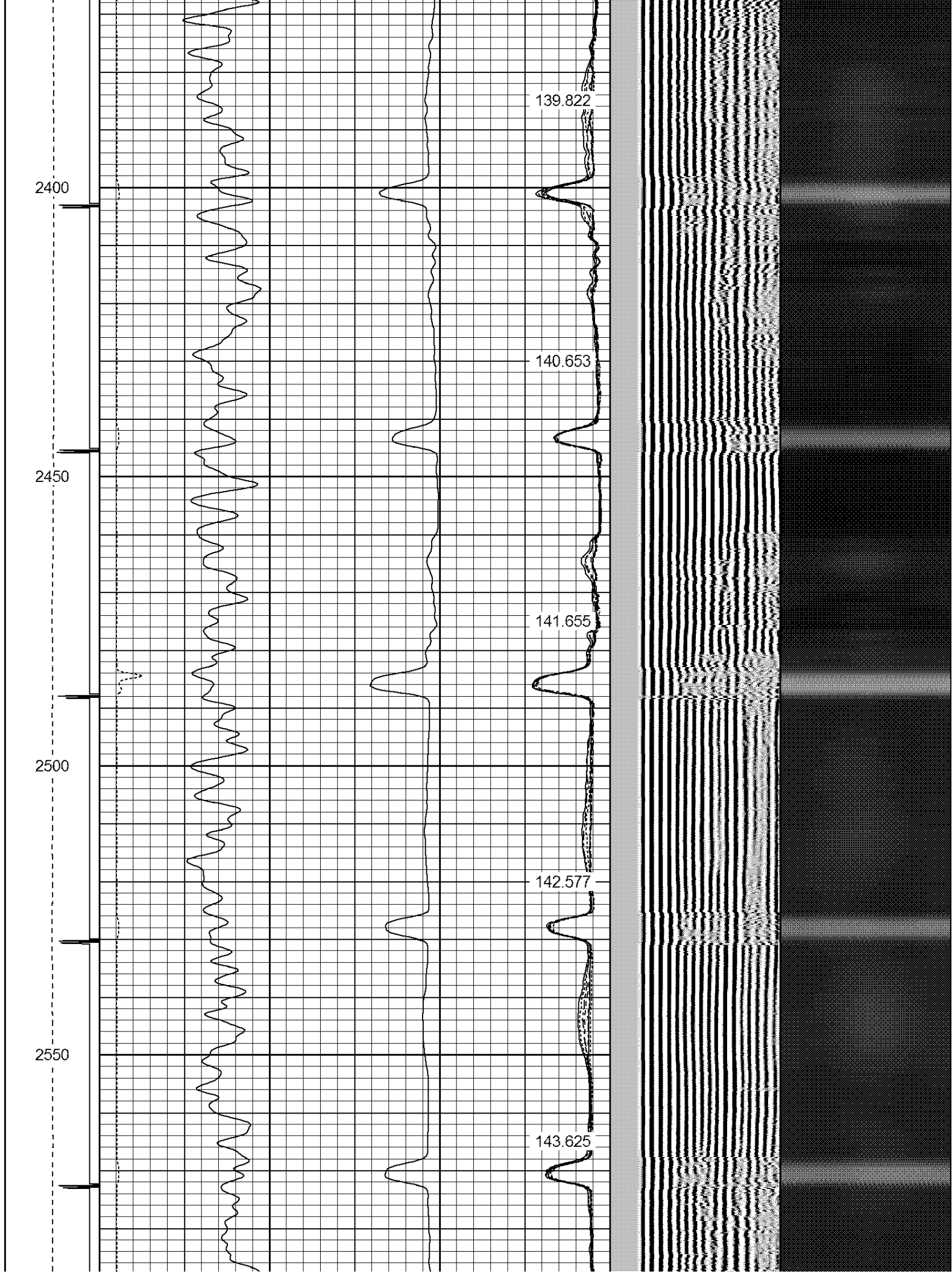
139.822

140.653

141.655

142.577

143.625



2600

144.596

2650

145.656

2700

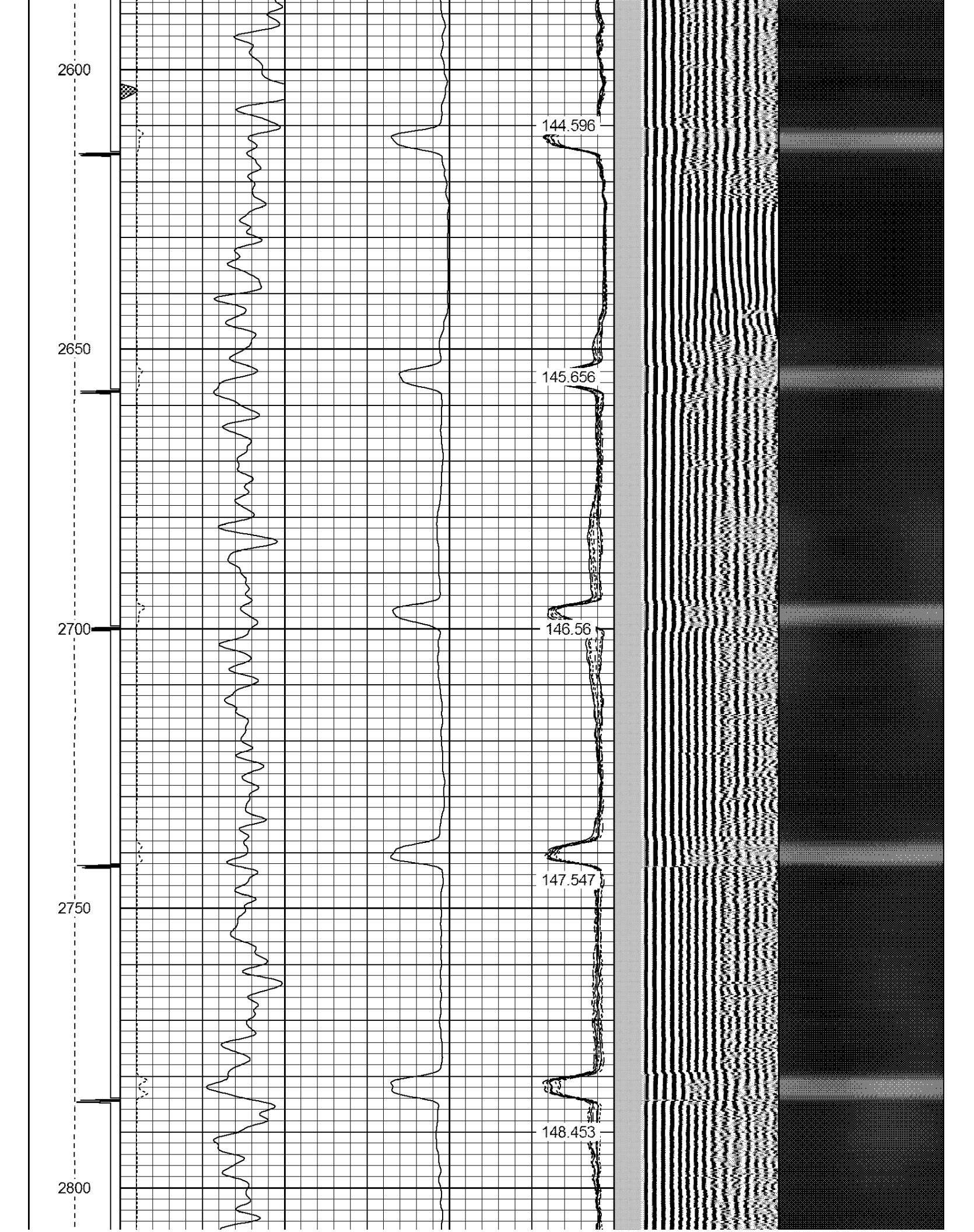
146.56

2750

147.547

2800

148.453



2850

2900

2950

3000

149.416

150.306

151.307

152.252

153.291



3050

3100

3150

3200

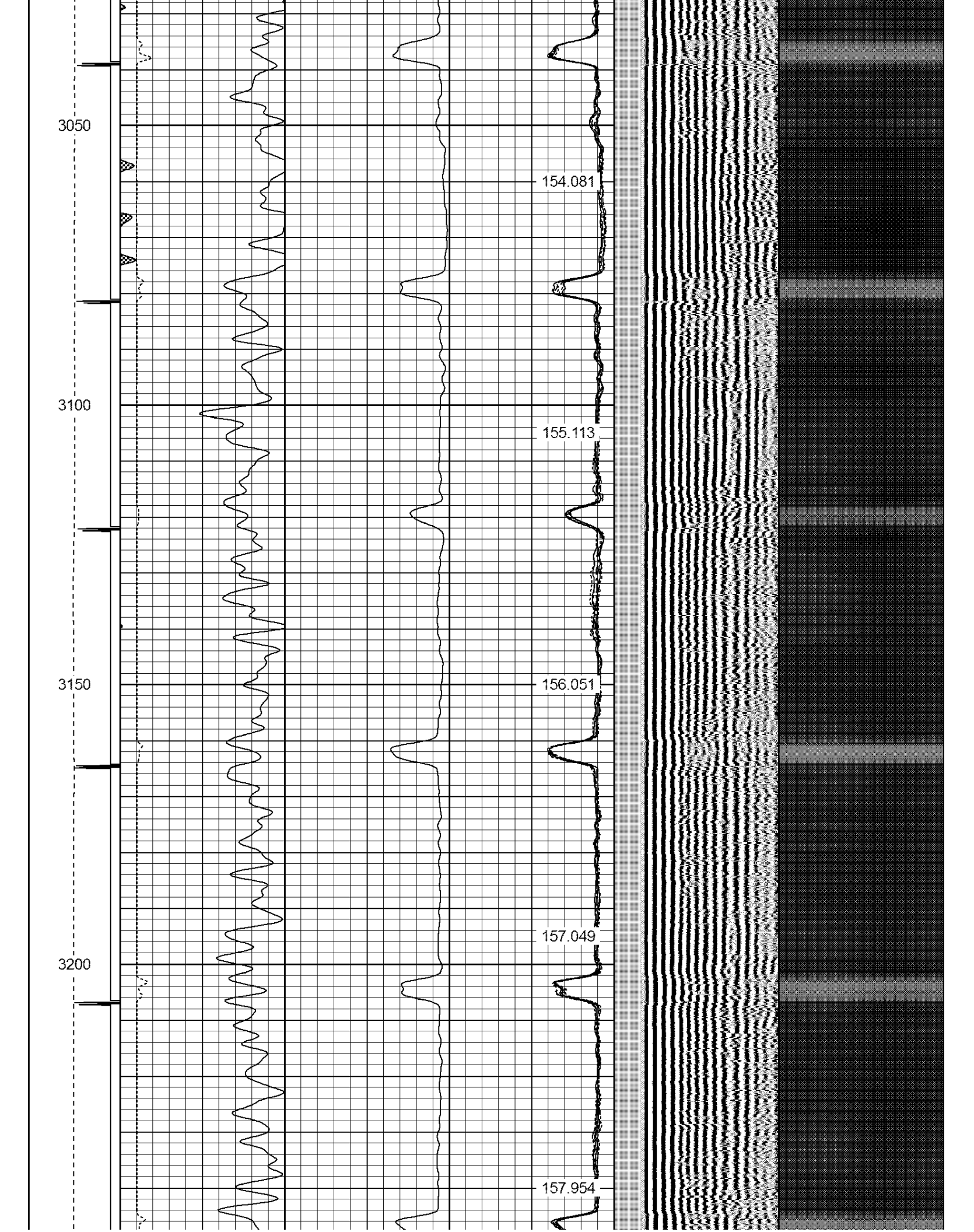
154.081

155.113

156.051

157.049

157.954





3500

3550

3600

3650

163.21

164.131

165.003

165.916



3700

3750

3800

3850

3900

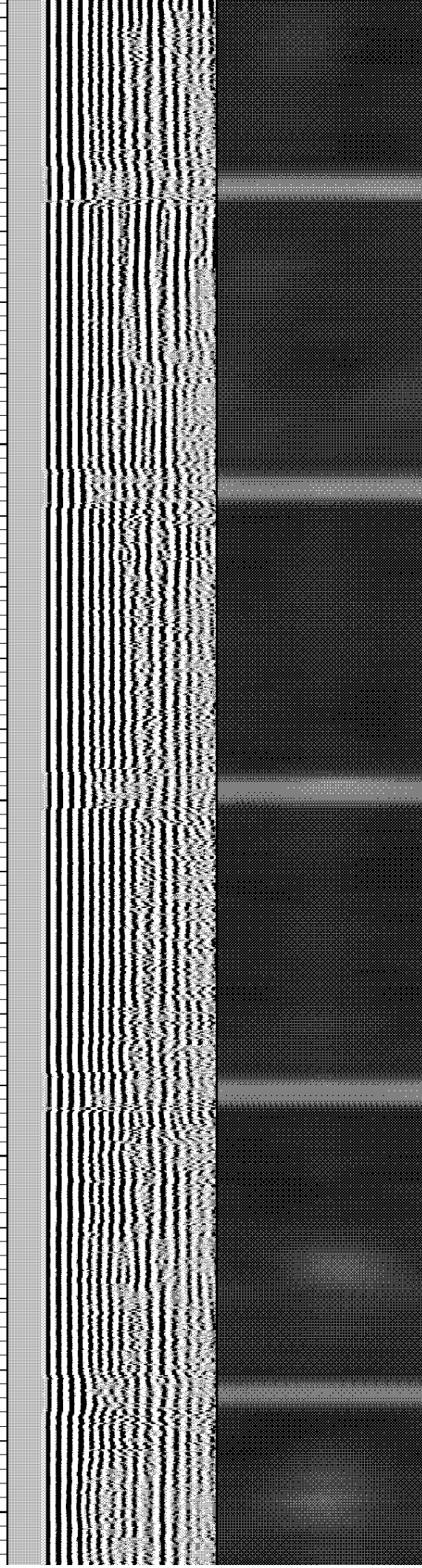
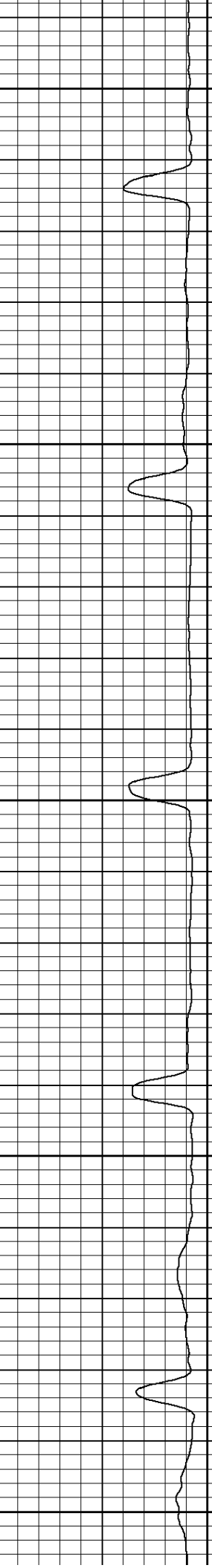
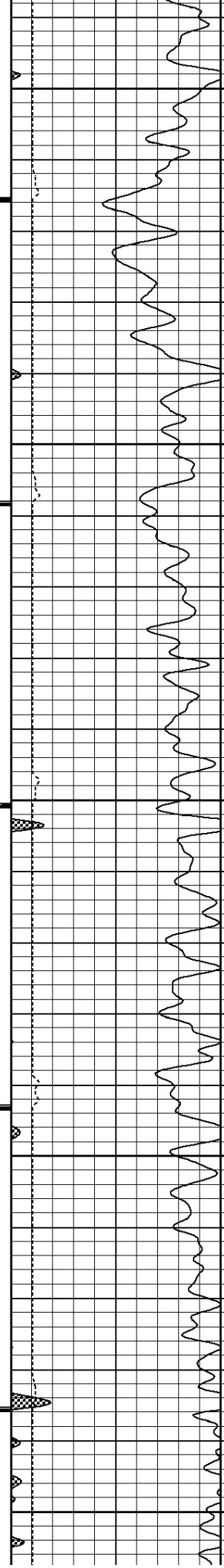
166.911

167.783

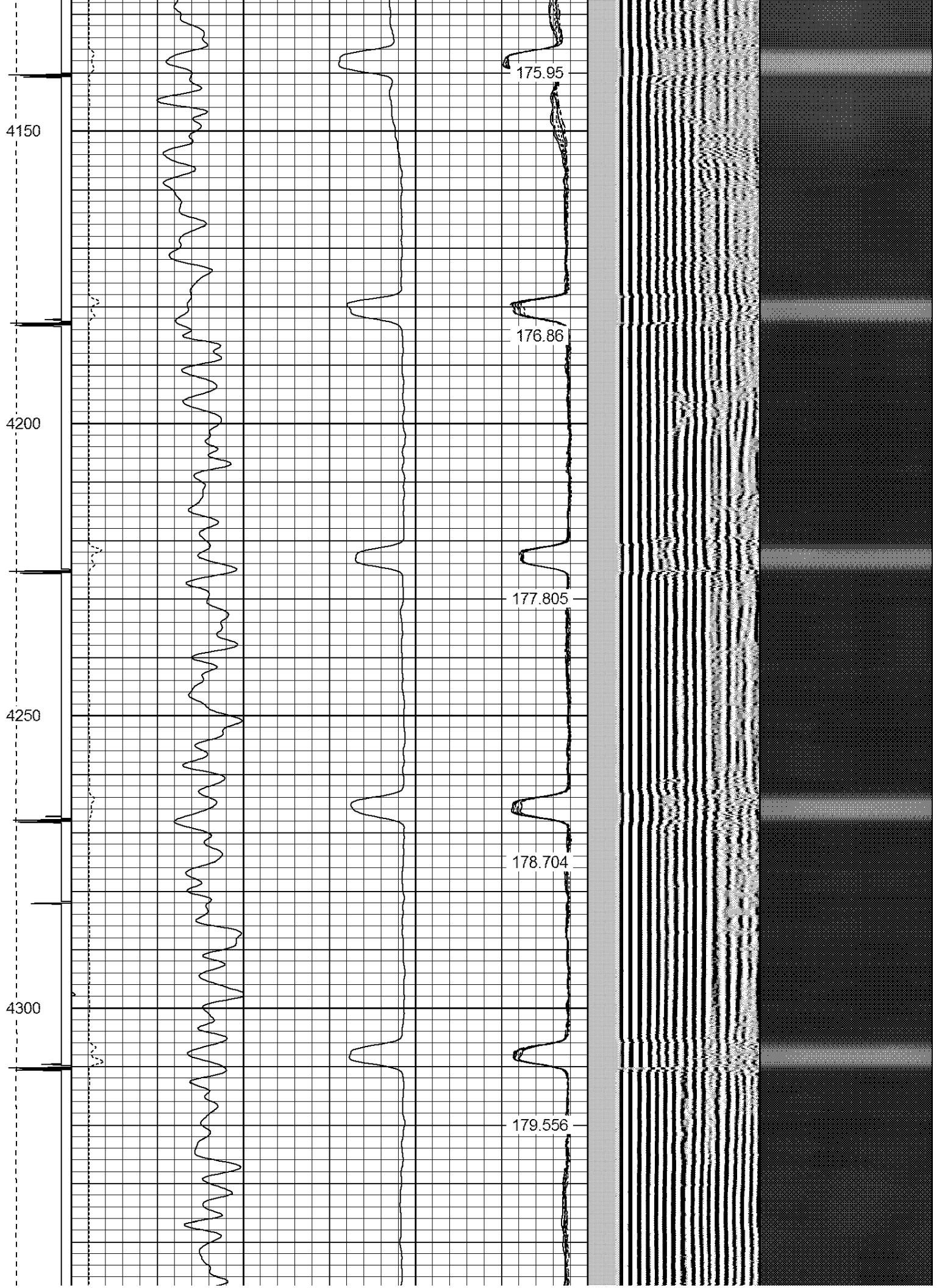
168.765

169.704

170.578







4350

4400

4450

4500

4550

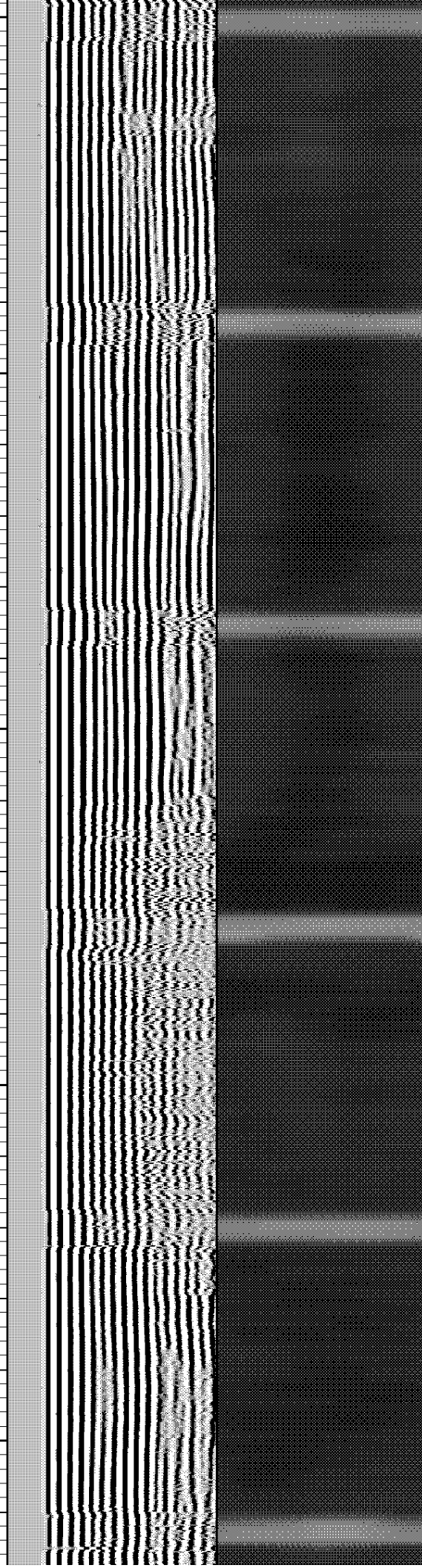
180.533

181.389

182.324

183.153

183.975



4600

4650

4700

4750

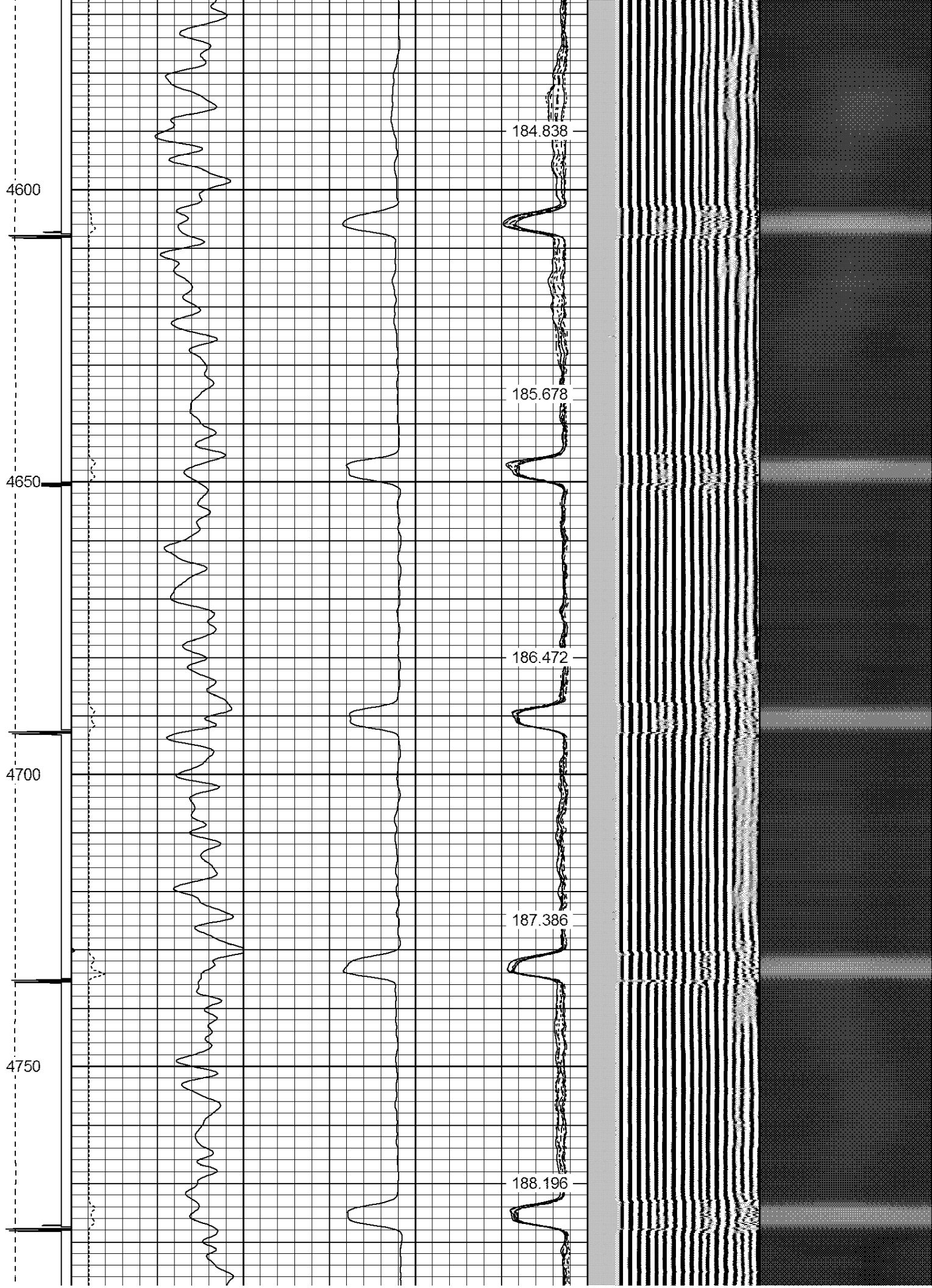
184.838

185.678

186.472

187.386

188.196



4800

4850

4900

4950

5000

188.985

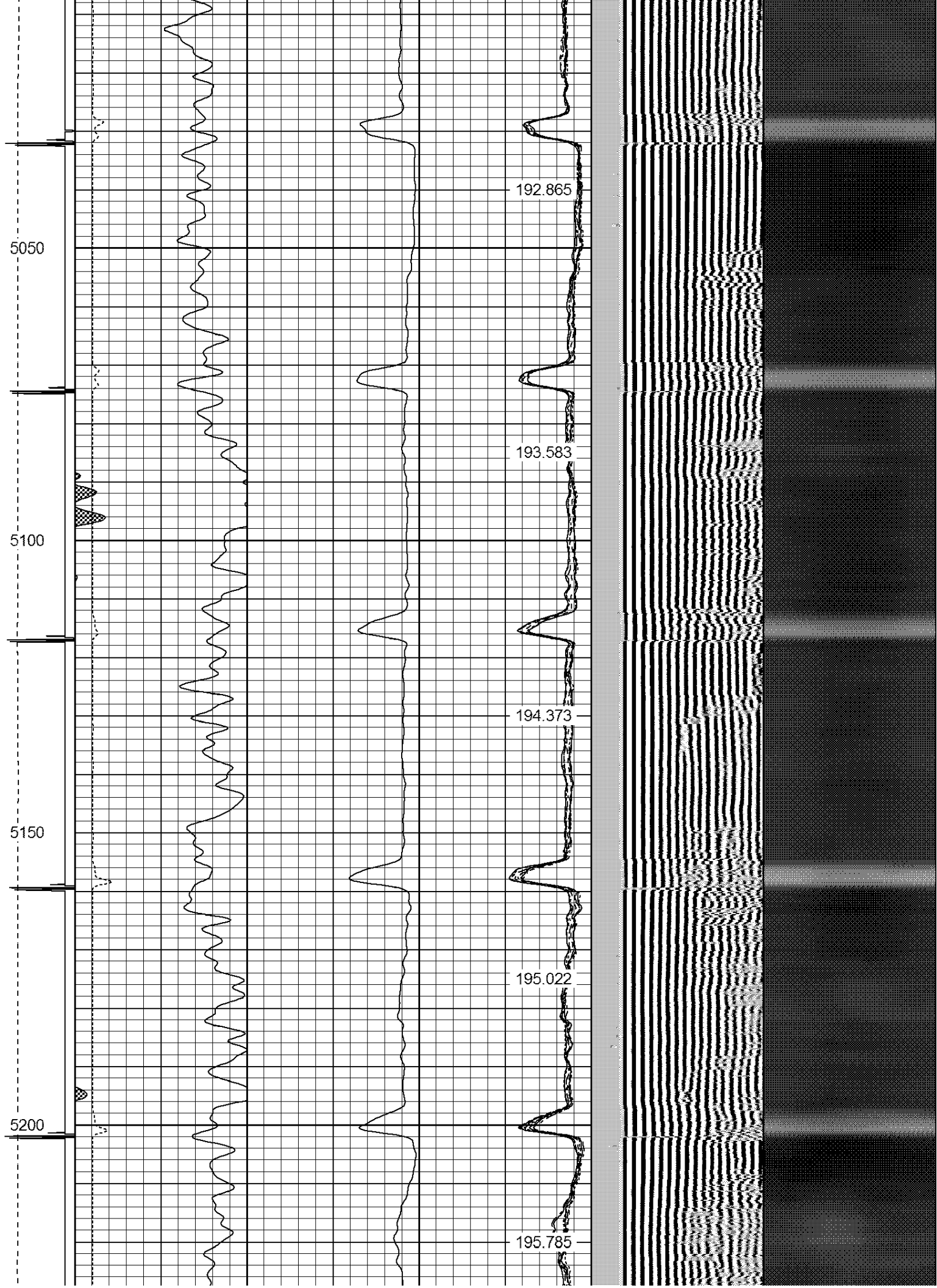
189.713

190.696

191.402

192.123





5250

196.453

5300

197.143

5350

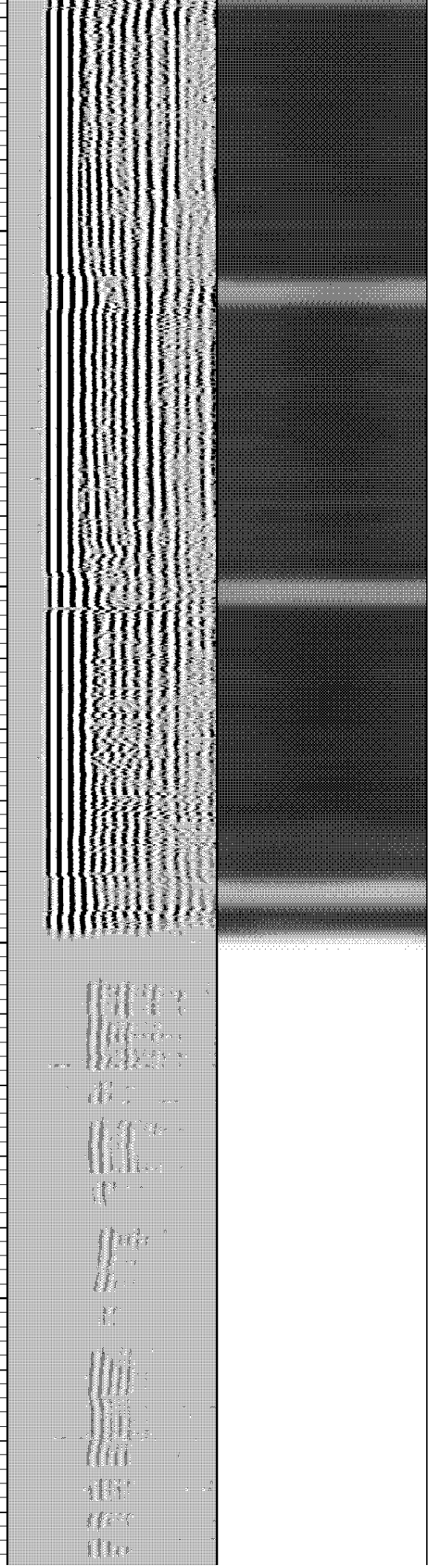
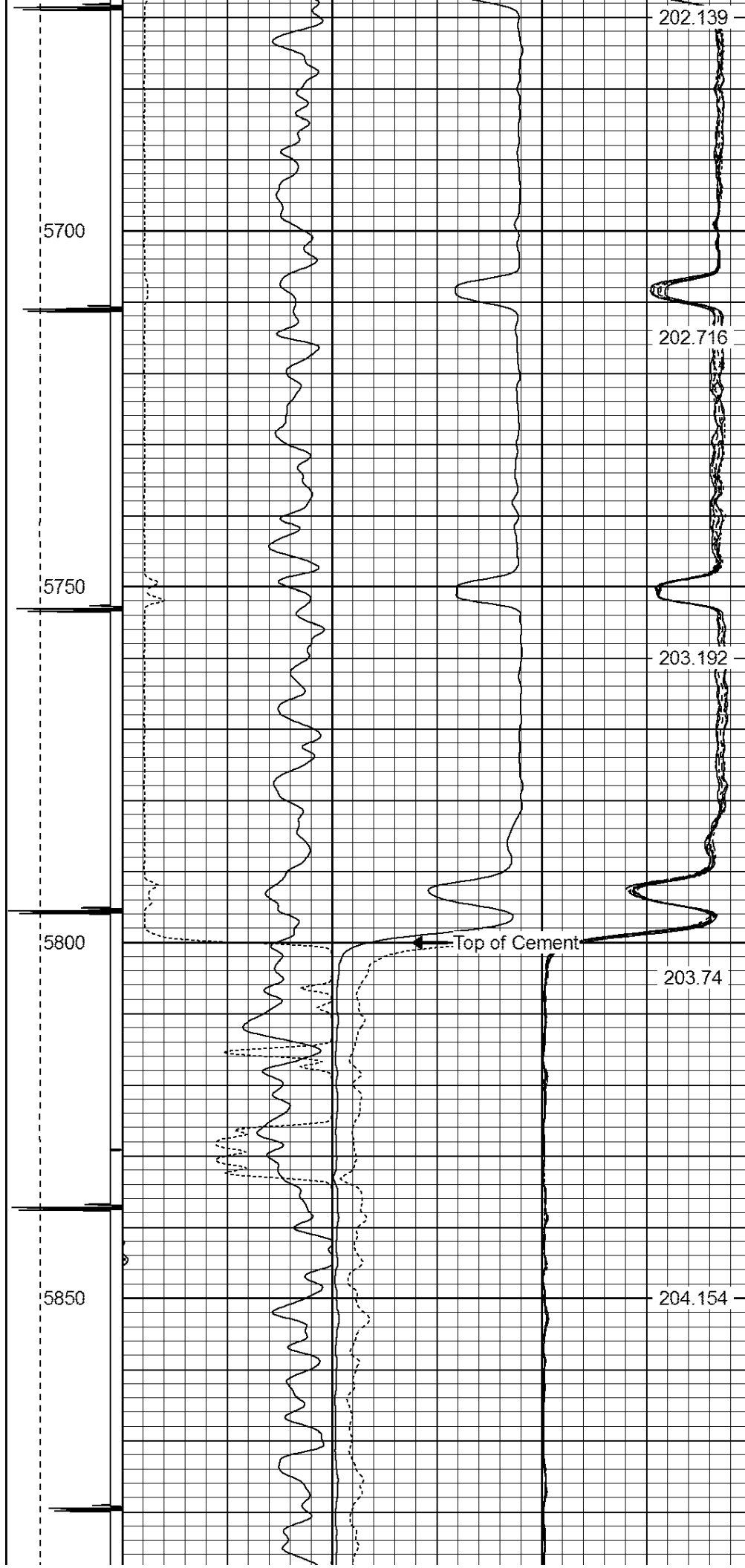
197.779

5400

198.299

199.027





5900

5950

6000

6050

6100

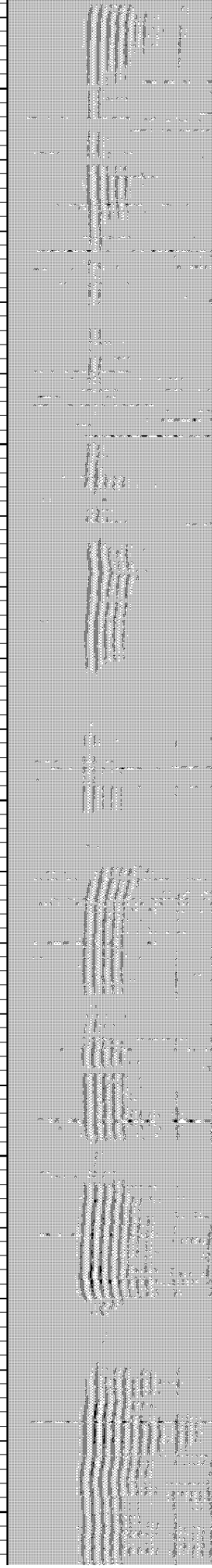
204.525

204.858

205.047

205.256

205.379



6150

6200

6250

6300

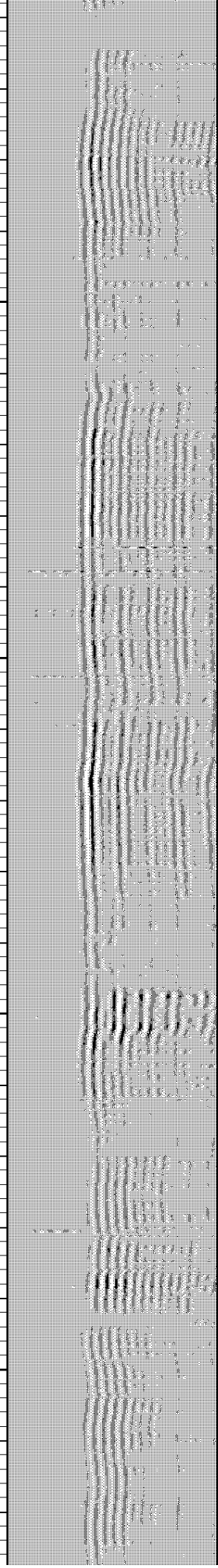
205.422

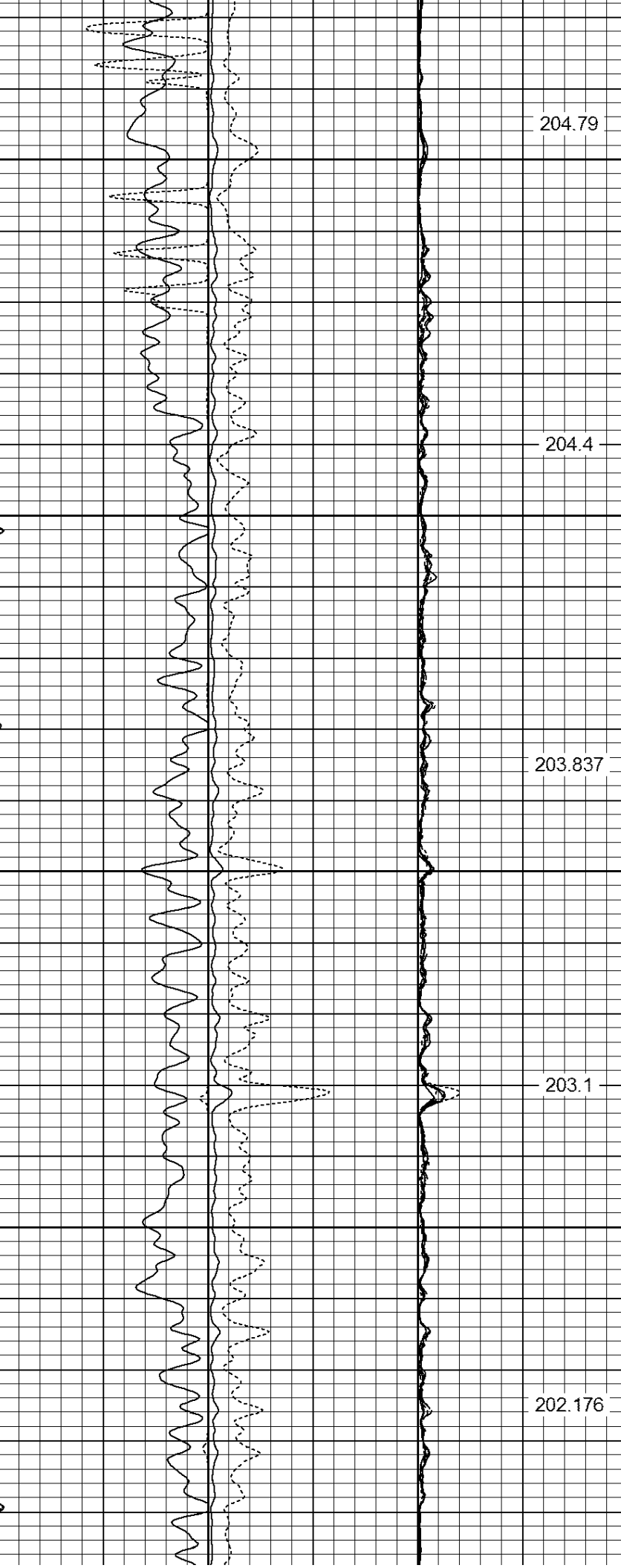
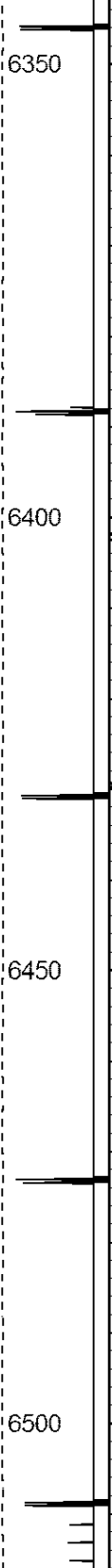
205.477

205.381

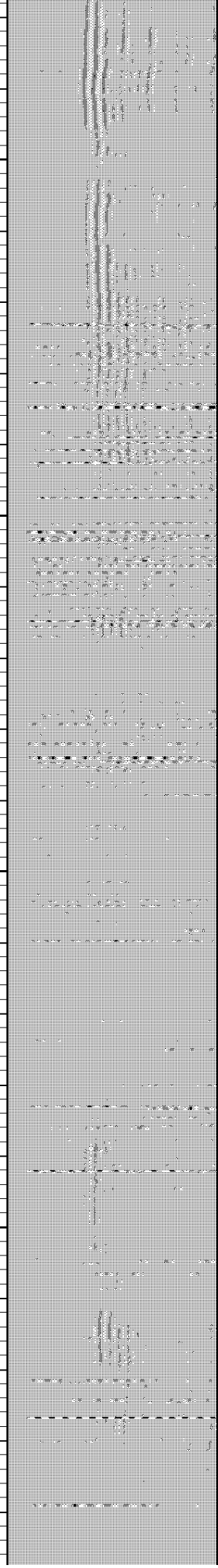
205.266

205.146





204.79
204.4
203.837
203.1
202.176



6550

6600

6650

6700

6750

201.234

199.93

198.576

197.143

195.253

Temperature

AMPS8

AMPS7

AMPS6

AMPS5

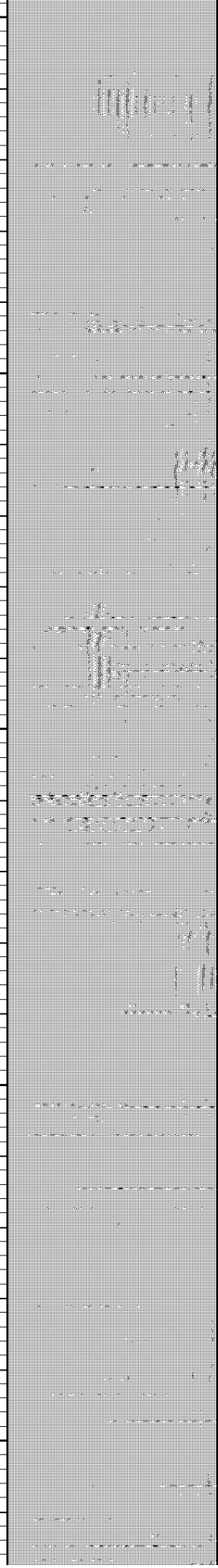
AMPS4

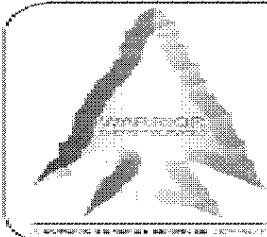
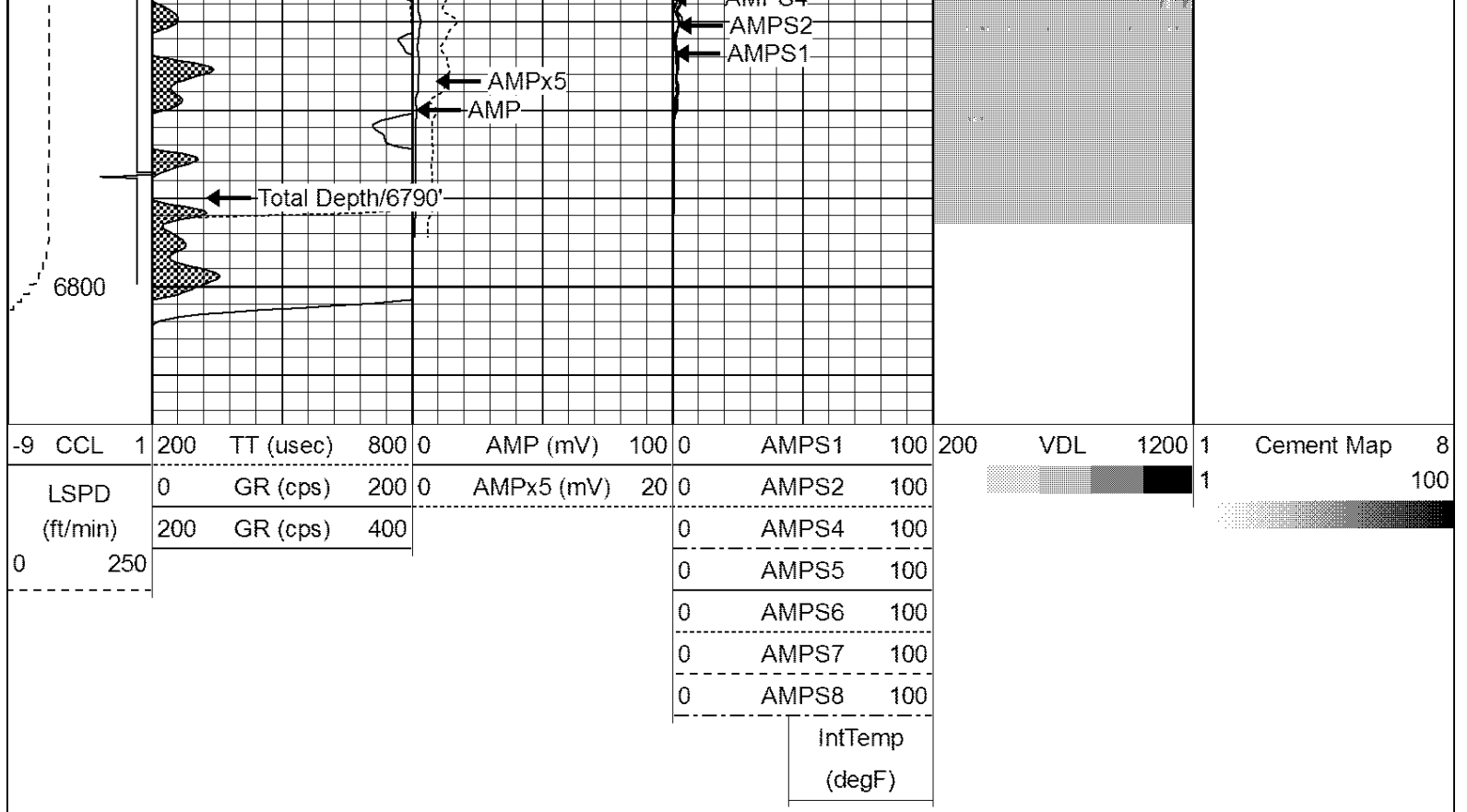
GR

CCL

LSPD

TT





WARRIOR
ENERGY SERVICES

Company KERR-McGEE OIL & GAS ONSHORE LP
Well HOUSTON 17-7L
Field WATTENBERG
County WELD
State COLORADO