

Cement Bond Gamma Ray Ccl Temp Log

Company Koch Exploration Company, LLC
Well Anthill Unit Wyatt #25-43 SWD
Field White River Dome
County Rio Blanco State CO.

Location: API #: 441' FSL & 1959' FEL SW/SE

Other Services

Sect. 25 Twp. 2N Rge. 97W
Permanent Datum G.L. Elevation 5819'
Log Measured From K.B. 11 FT. AGL
Drilling Measured From K.B.

Elevation
K.B. 5830'
D.F. 5829'
G.L. 5829'

Date 19-OCT-2013

Run Number	1		
Depth Driller	3424'		
Depth Logger	3424'		
Bottom Logged Interval	3413'		
Top Log Interval	20'		
Open Hole Size	N/A		
Type Fluid	Water		
Density / Viscosity	N/A		
Max. Recorded Temp.	113 DEG. F.		
Estimated Cement Top	Surface		
Time Well Ready	9:15		
Time Logger on Bottom	9:50		
Equipment Number	100115		
Location	Vernal, UT.		
Recorded By	Cliff Edmunds		
Witnessed By	John Clark		

Borehole Record		Tubing Record					
Run Number	Bit	From	To	Size	Weight	From	To

Casing Record	Size	Wgt/Ft	Top	Bottom
Surface String	9.625"	36#	Surface	1100'
Prot. String				
Production String	7.0"	26#	Surface	3700'
Liner				

<<< Fold Here >>>

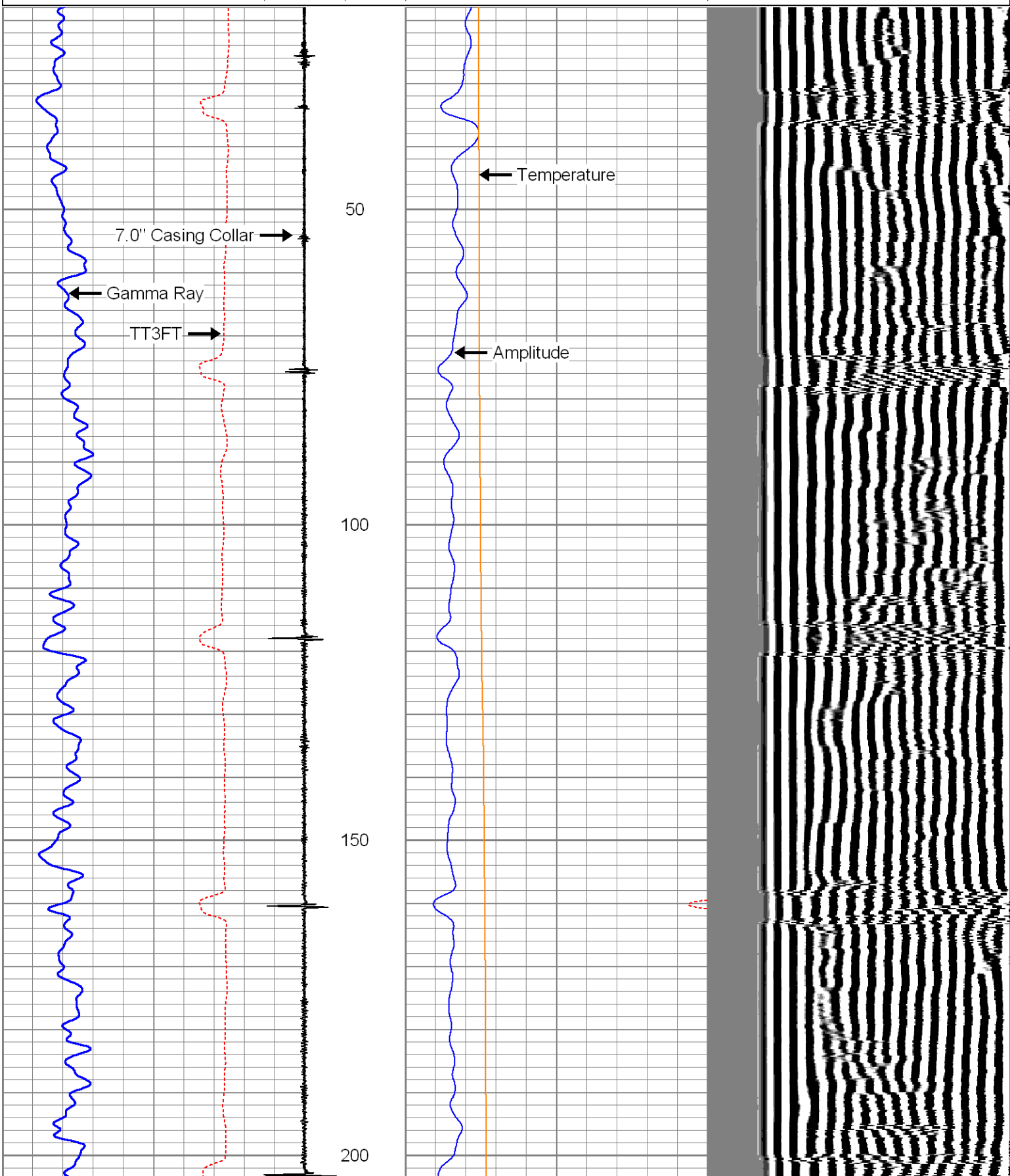
All interpretations are opinions based on inferences from electrical or other measurements and we cannot and do not guarantee the accuracy or correctness of any interpretation, and we shall not, except in the case of gross or willful negligence on our part, be liable or responsible for any loss, costs, damages, or expenses incurred or sustained by anyone resulting from any interpretation made by any of our officers, agents or employees. These interpretations are also subject to our general terms and conditions set out in our current Price Schedule.

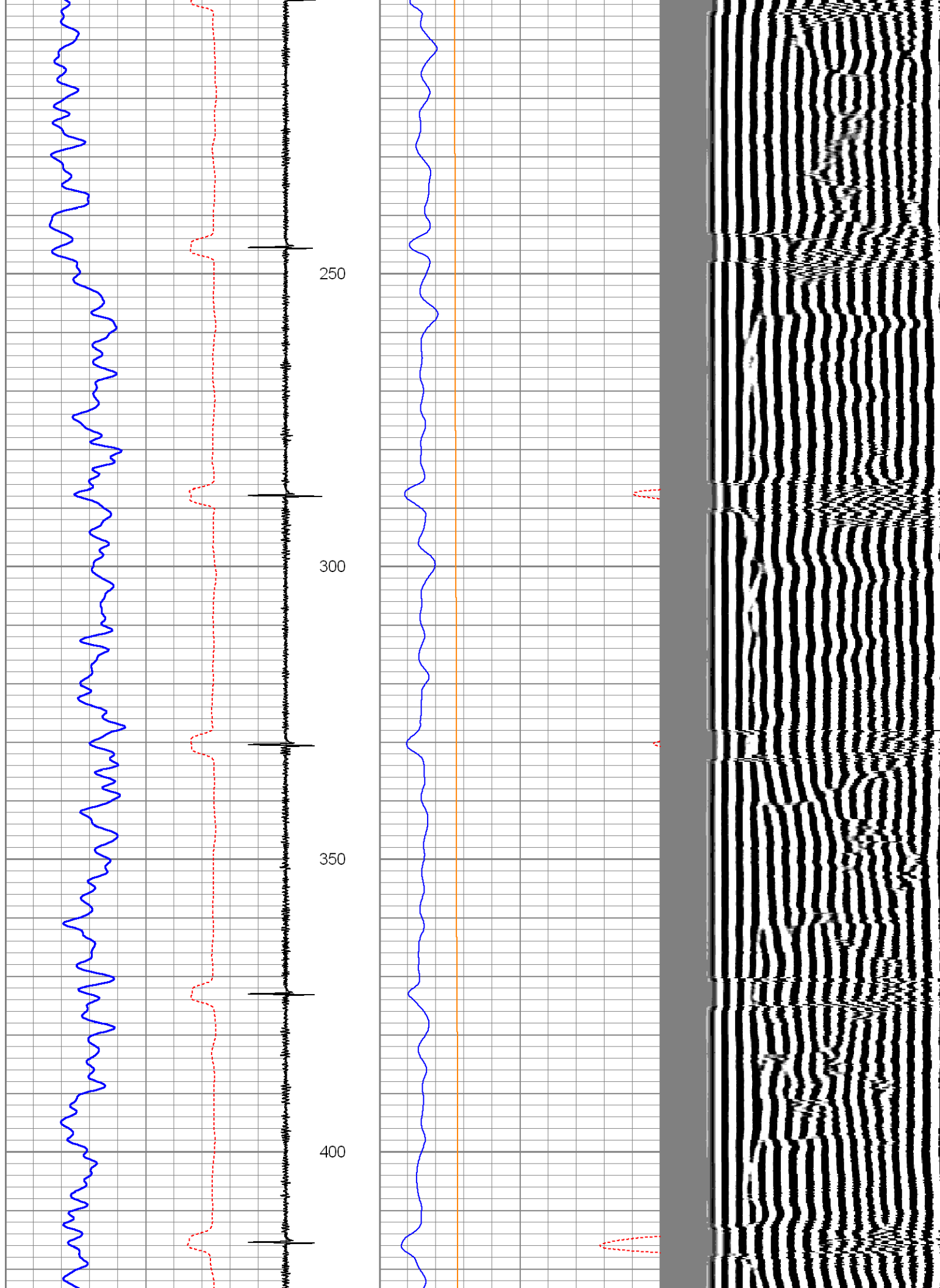
Comments

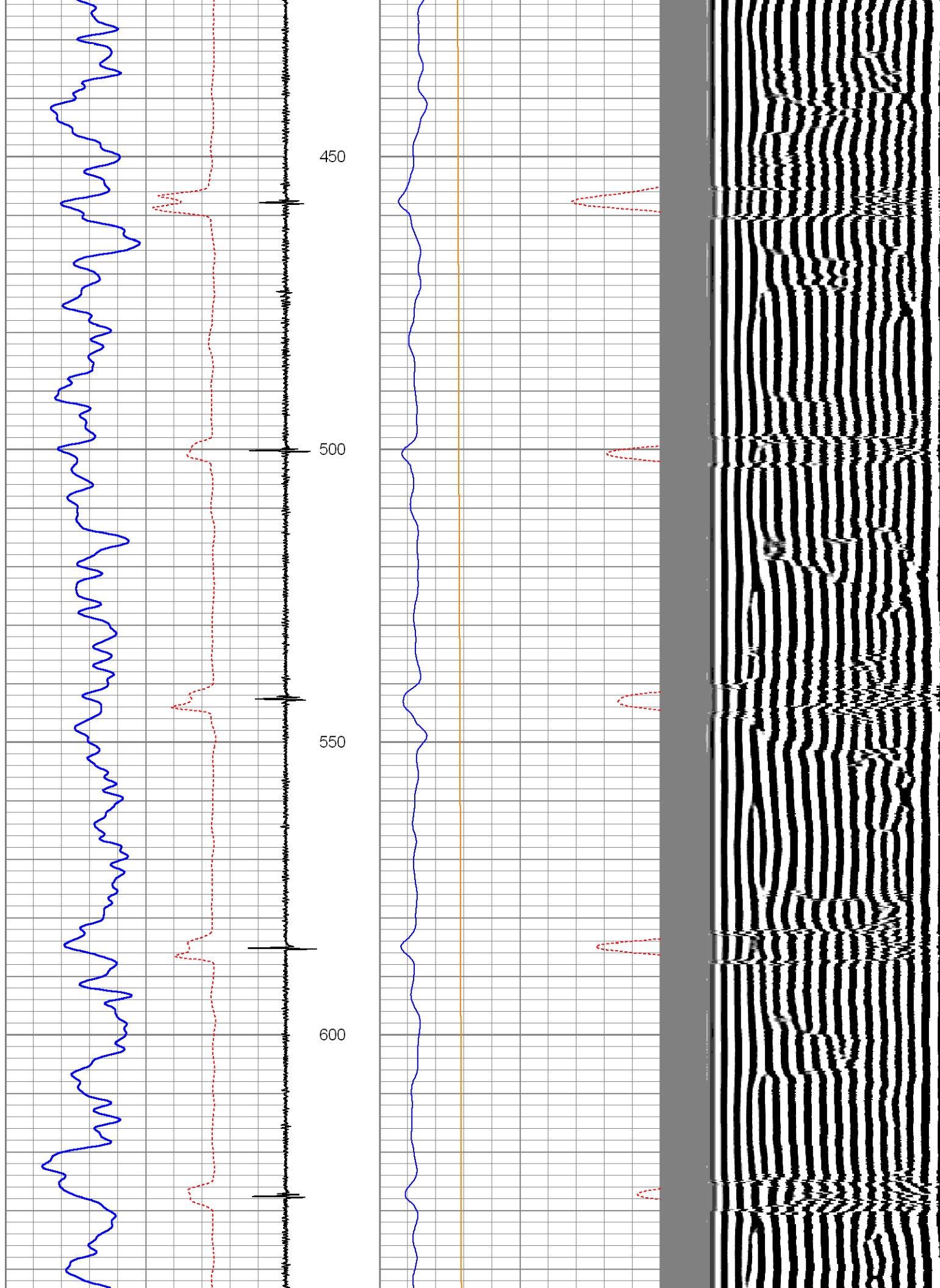
Correlated to HES OH Log Dated Sept. 2013

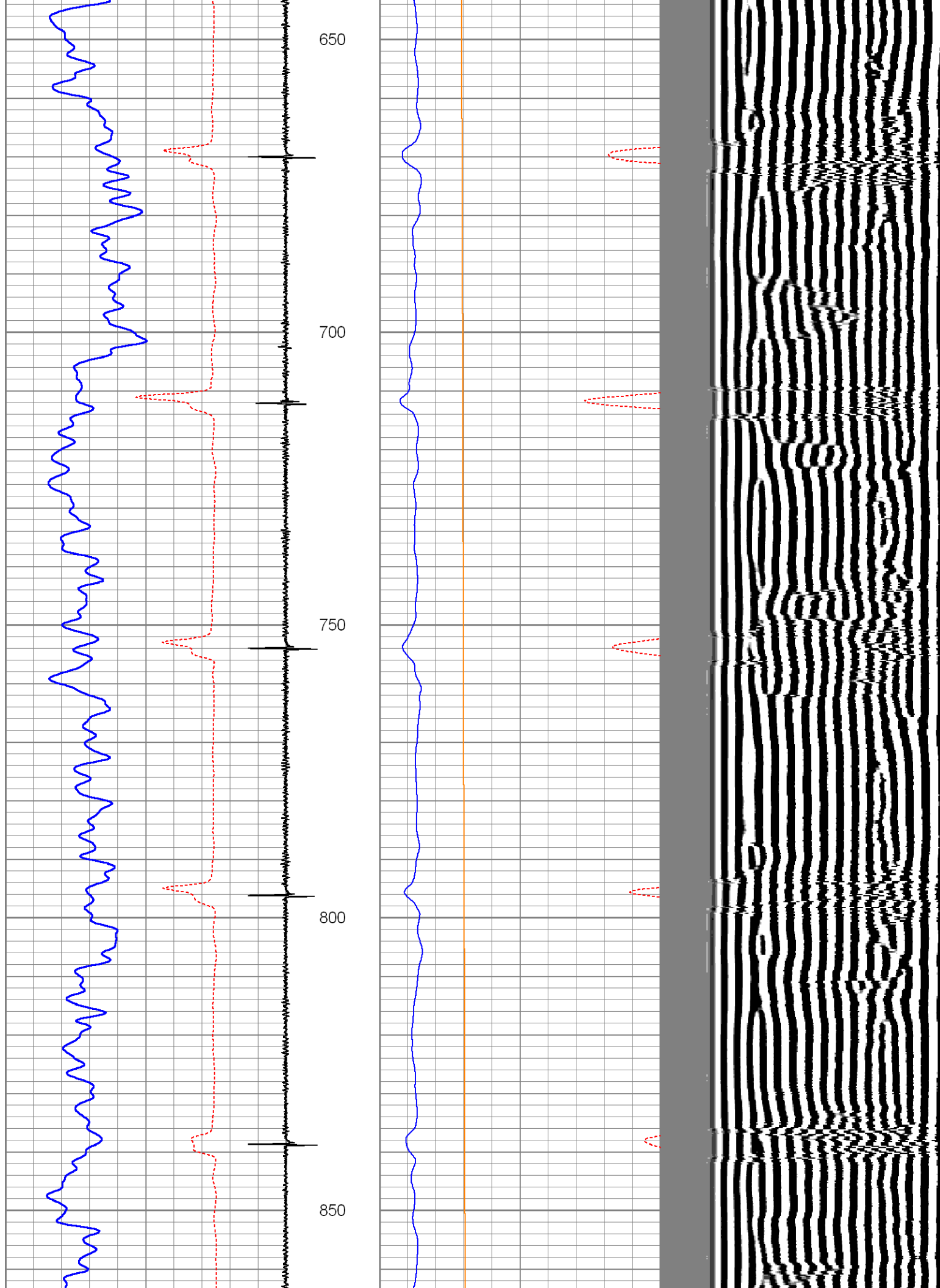
Database File: v-7185 koch25-43.db
Dataset Pathname: pass4.1
Presentation Format: v cbl 7
Dataset Creation: Sat Oct 19 11:43:27 2013 by Calc 7.0 B1
Charted by: Depth in Feet scaled 1:240

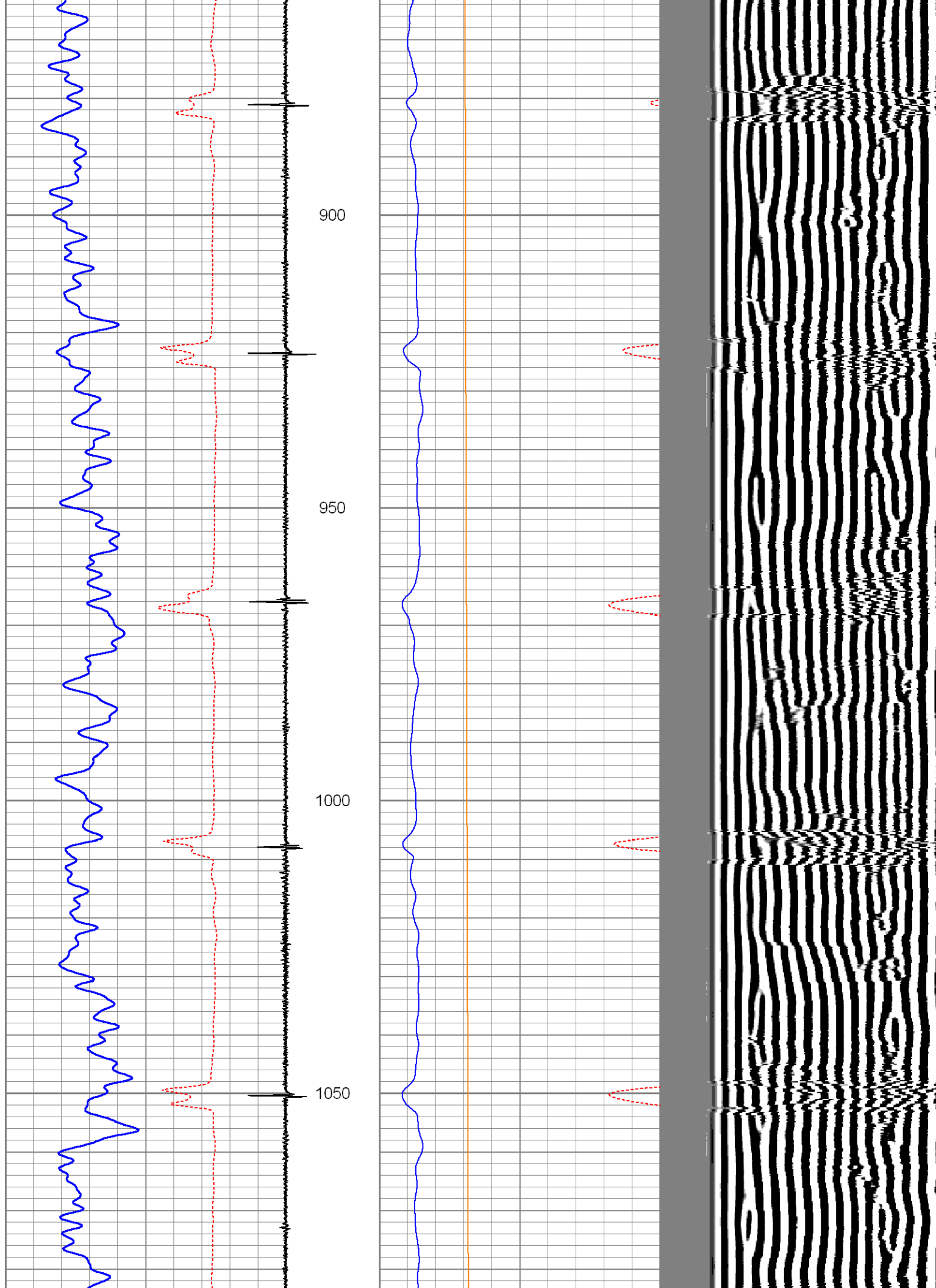
335	Travel Time (usec)	235	0	Amplitude (mV)	100	200	Variable Density	1200
0	Gamma Ray (GAPI)	150	0	Amplified Amplitude (mV)	10			
		CCL	20	TEMP (degF)	220			

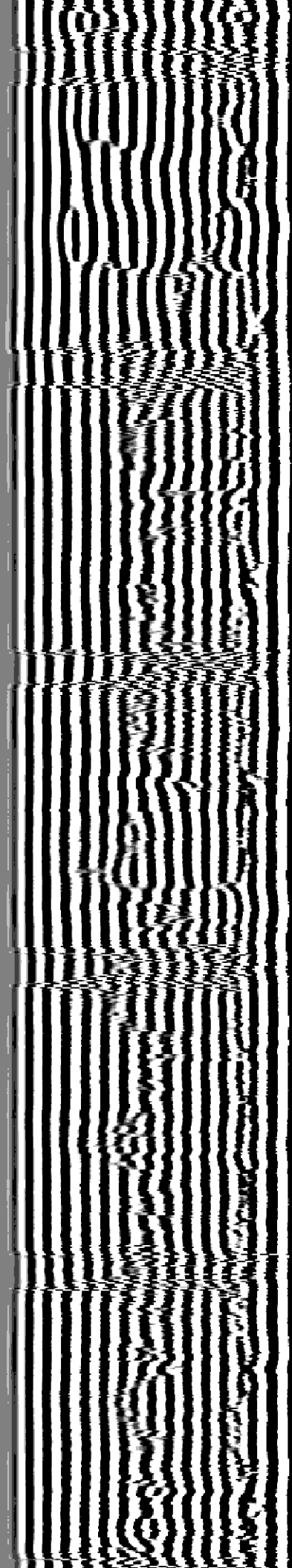
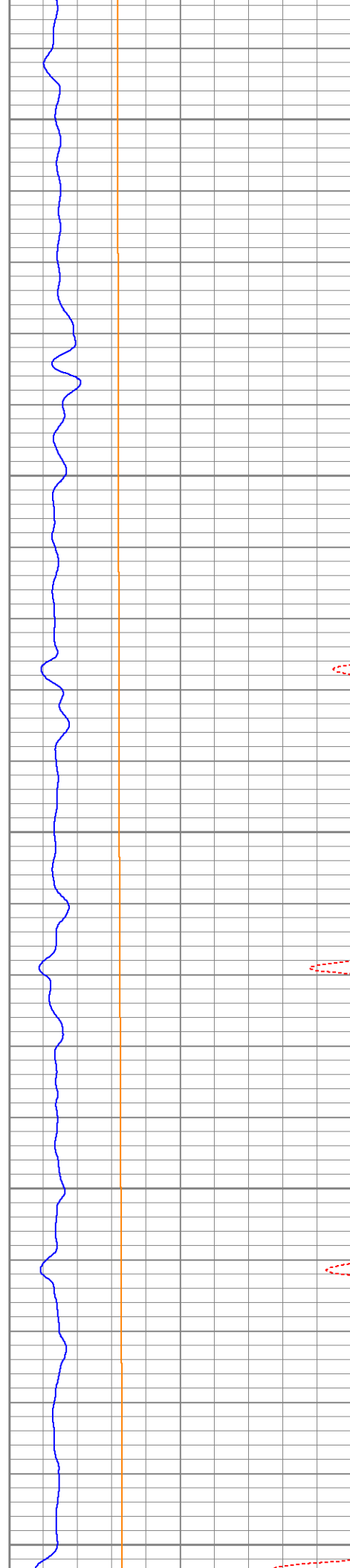
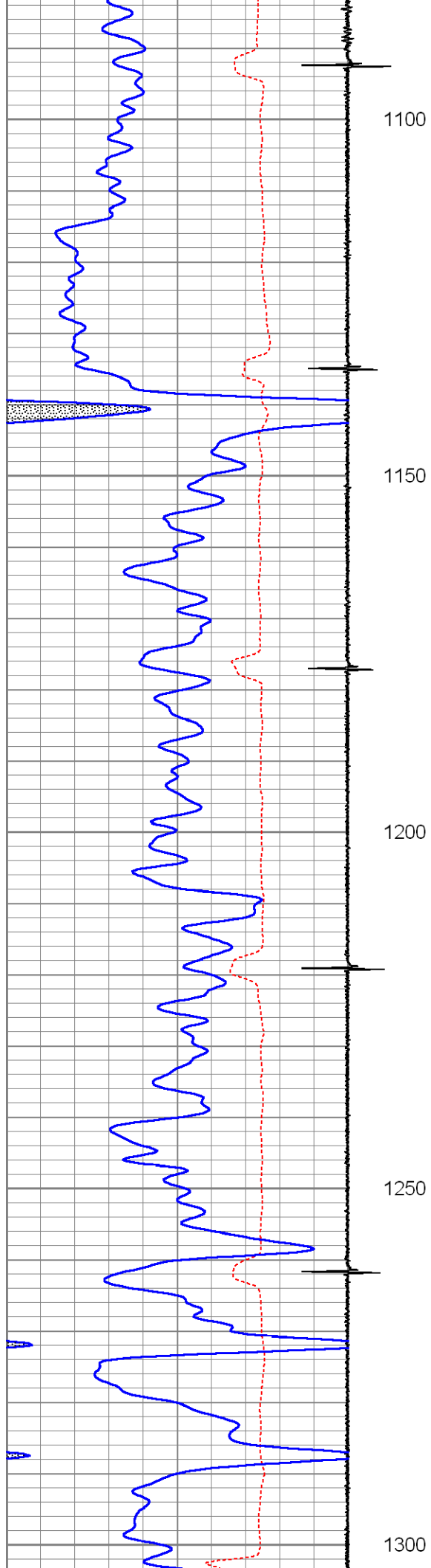


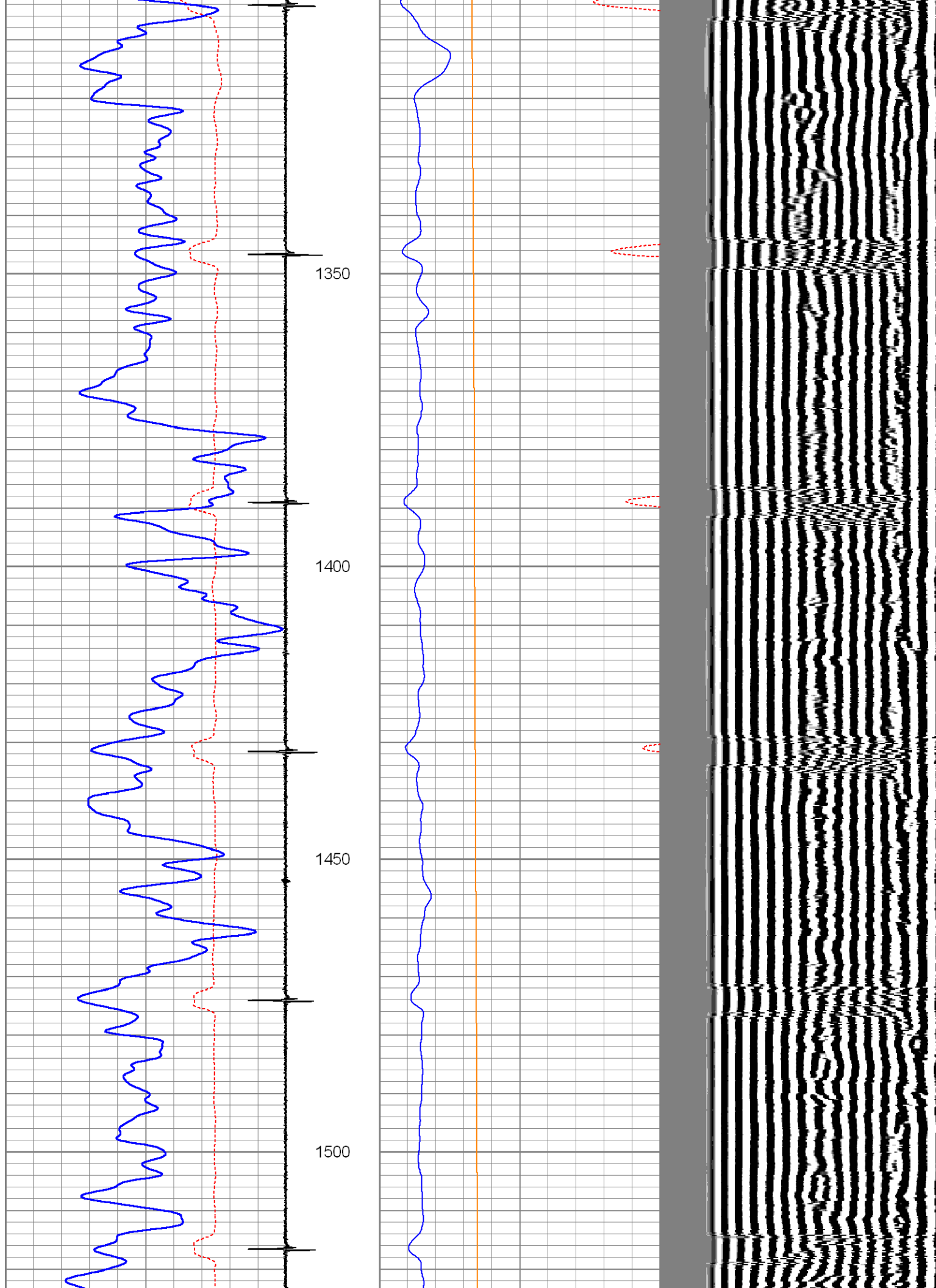


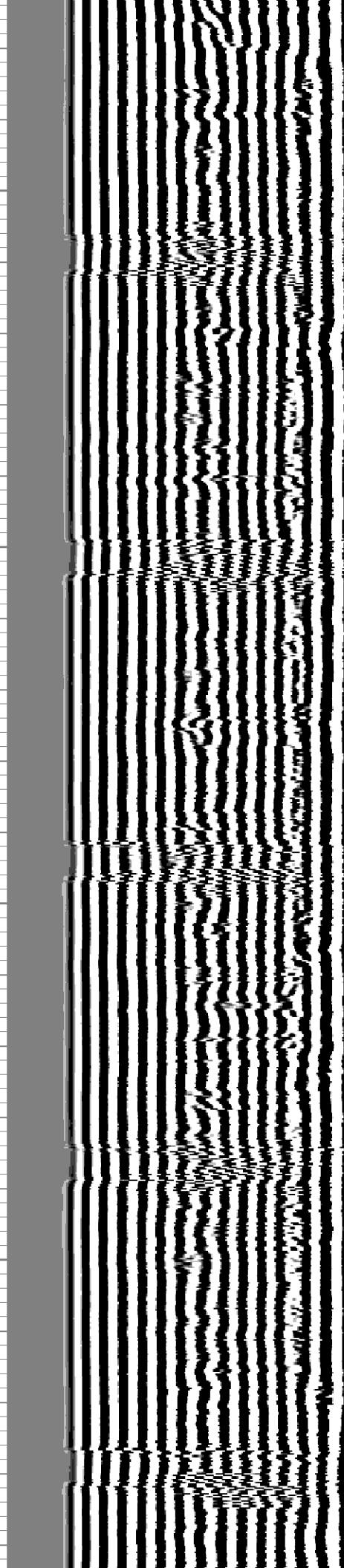
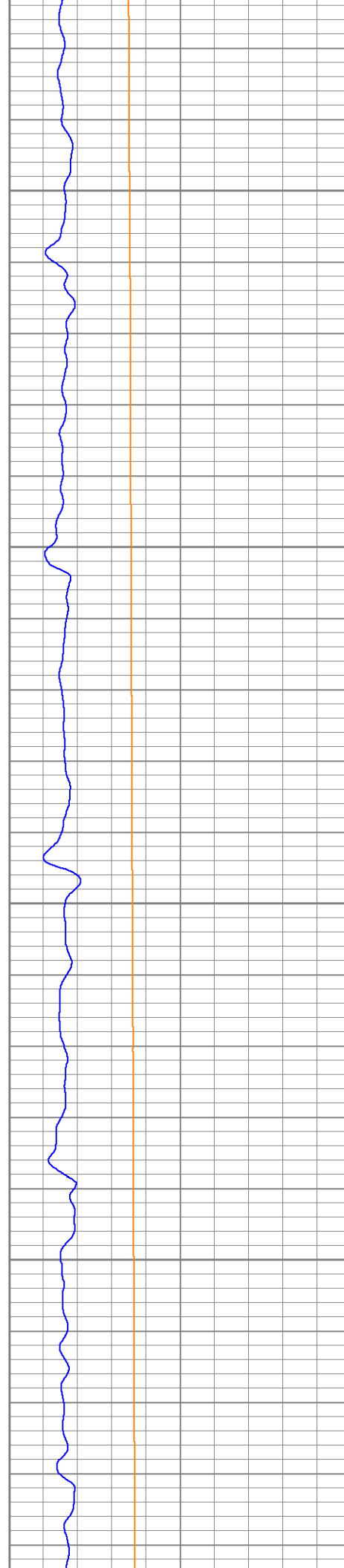
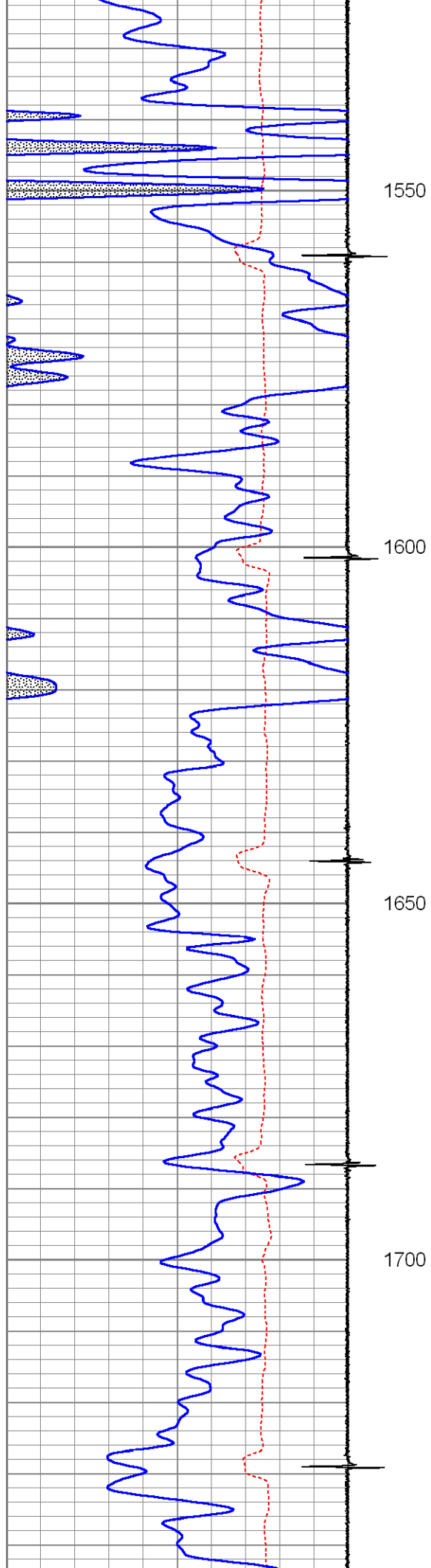


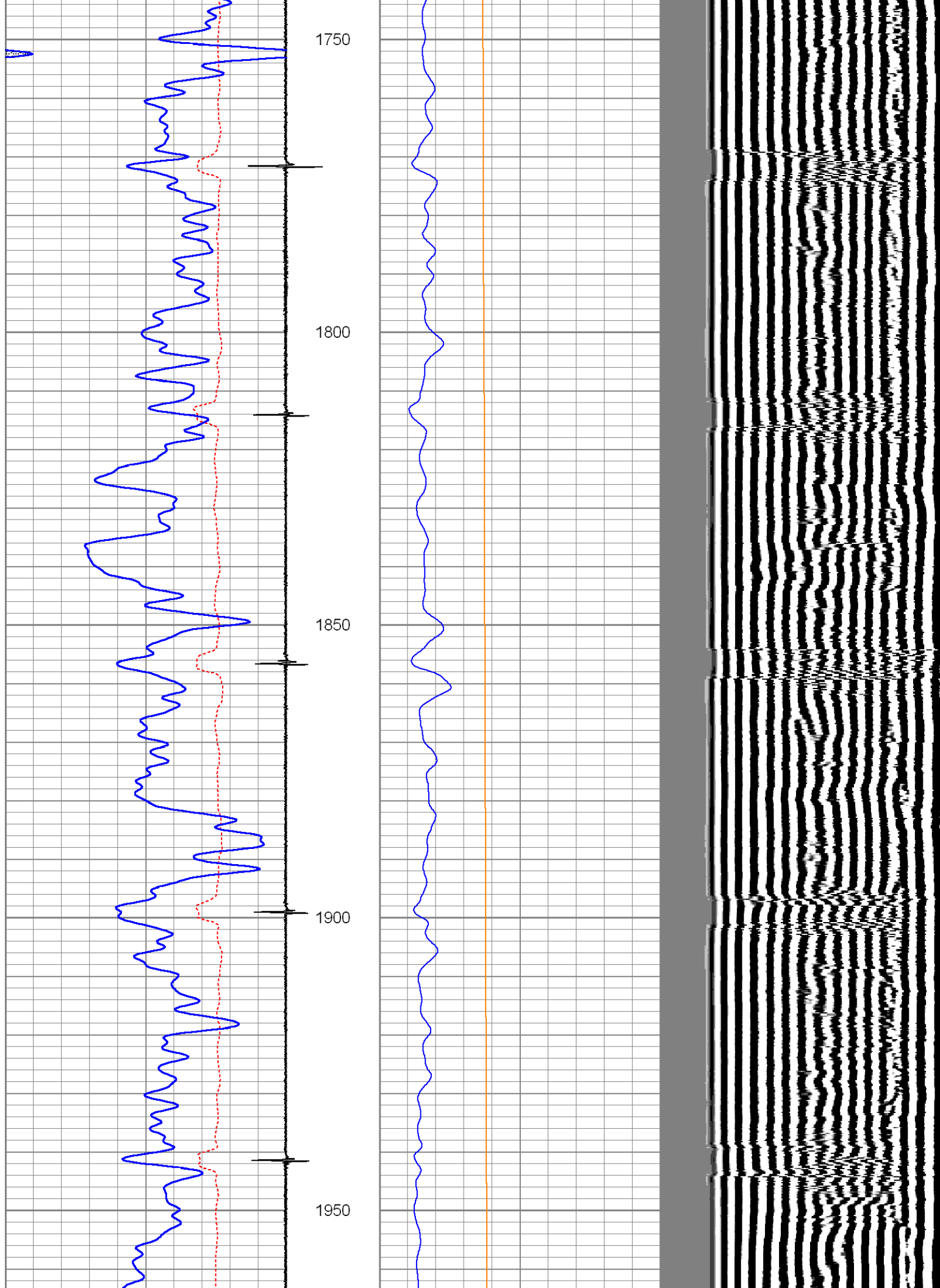


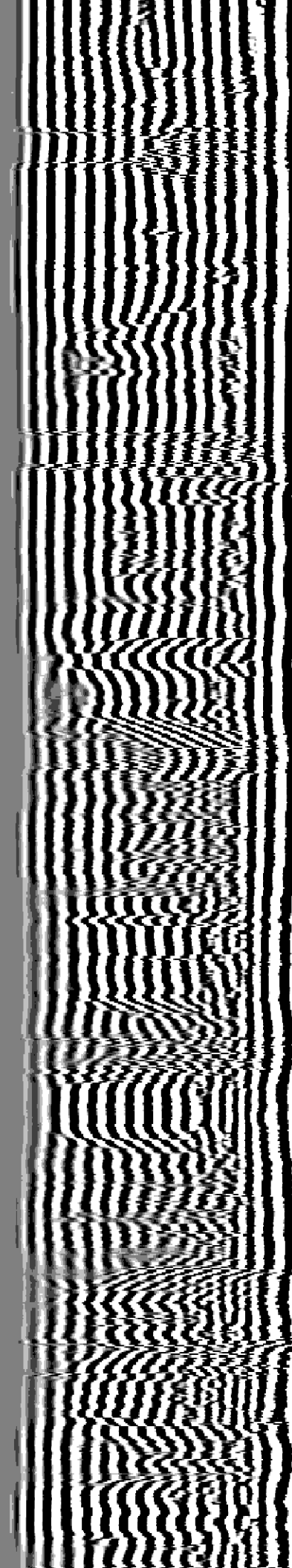
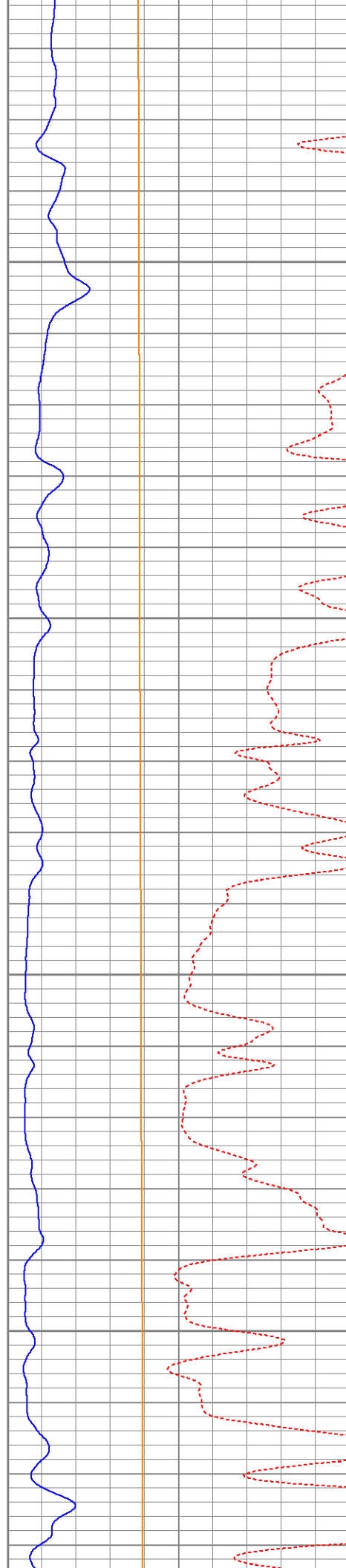
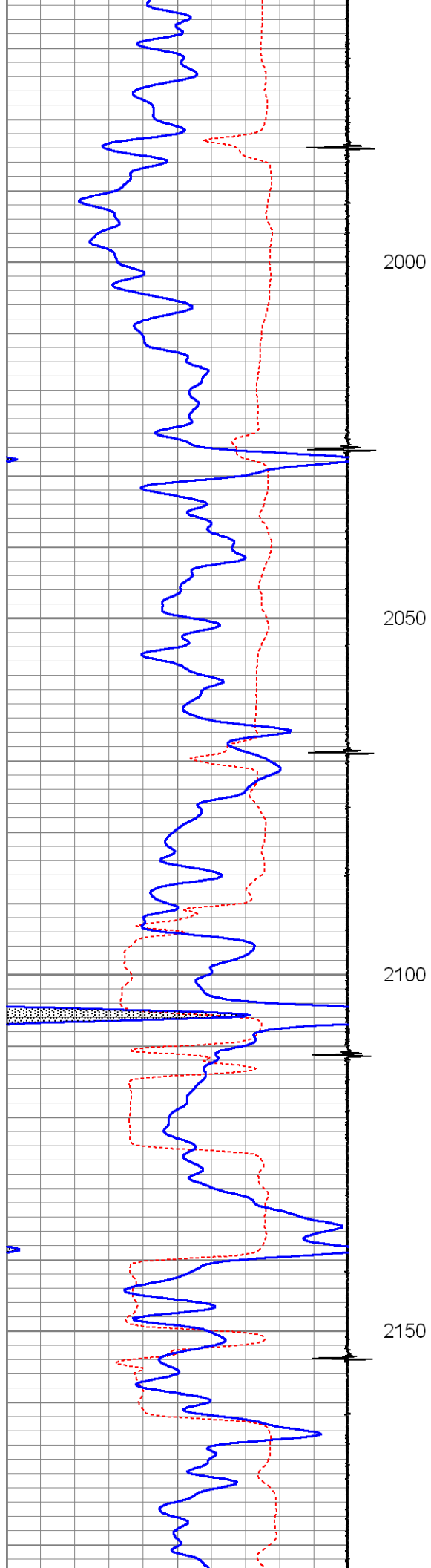


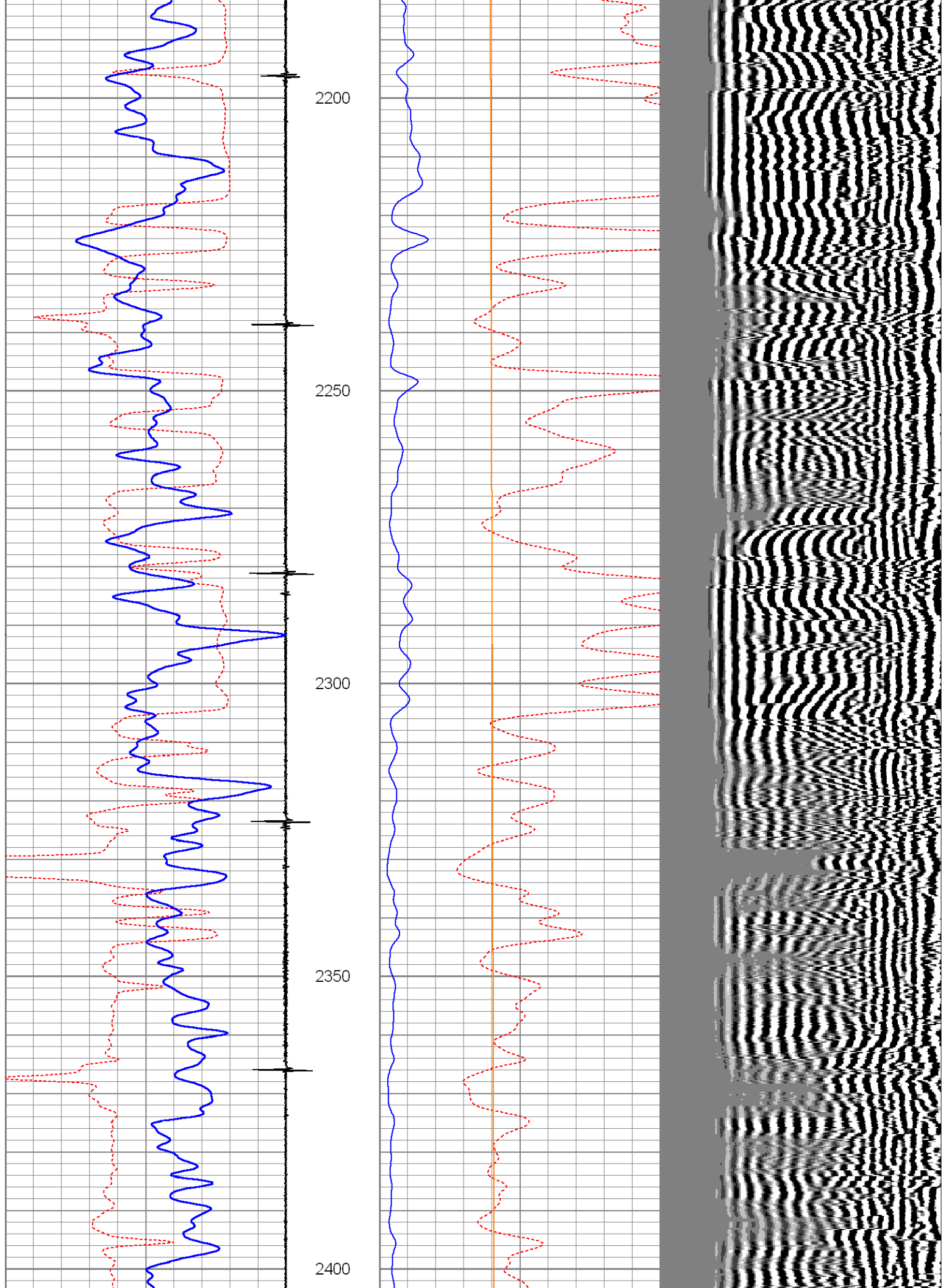


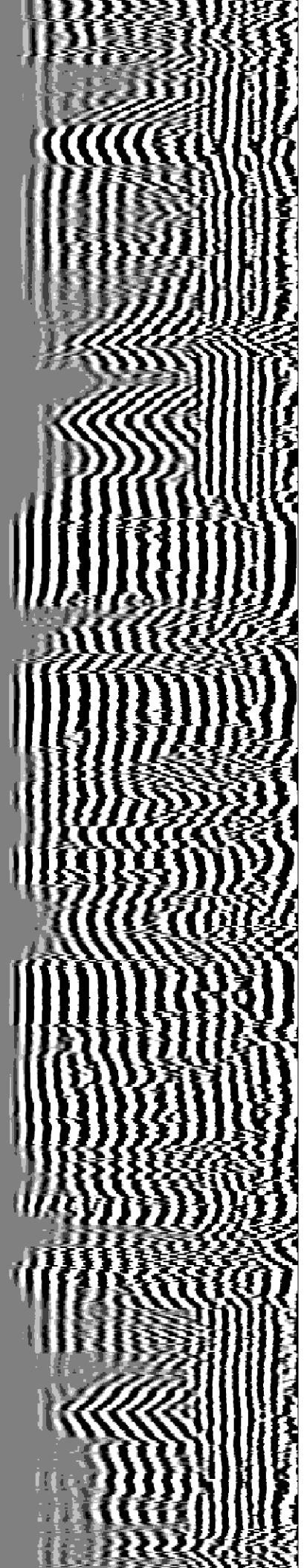
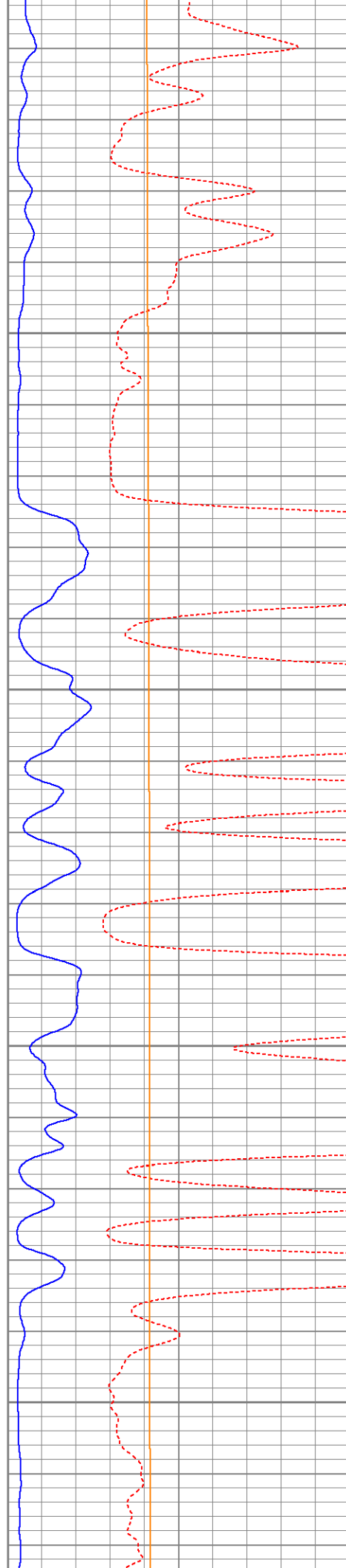
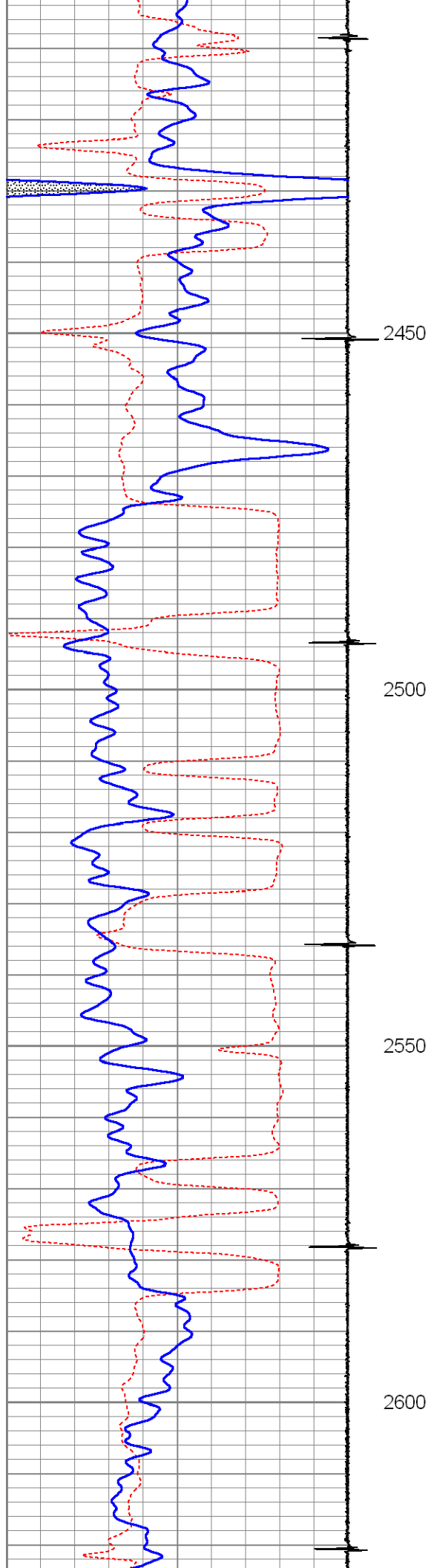


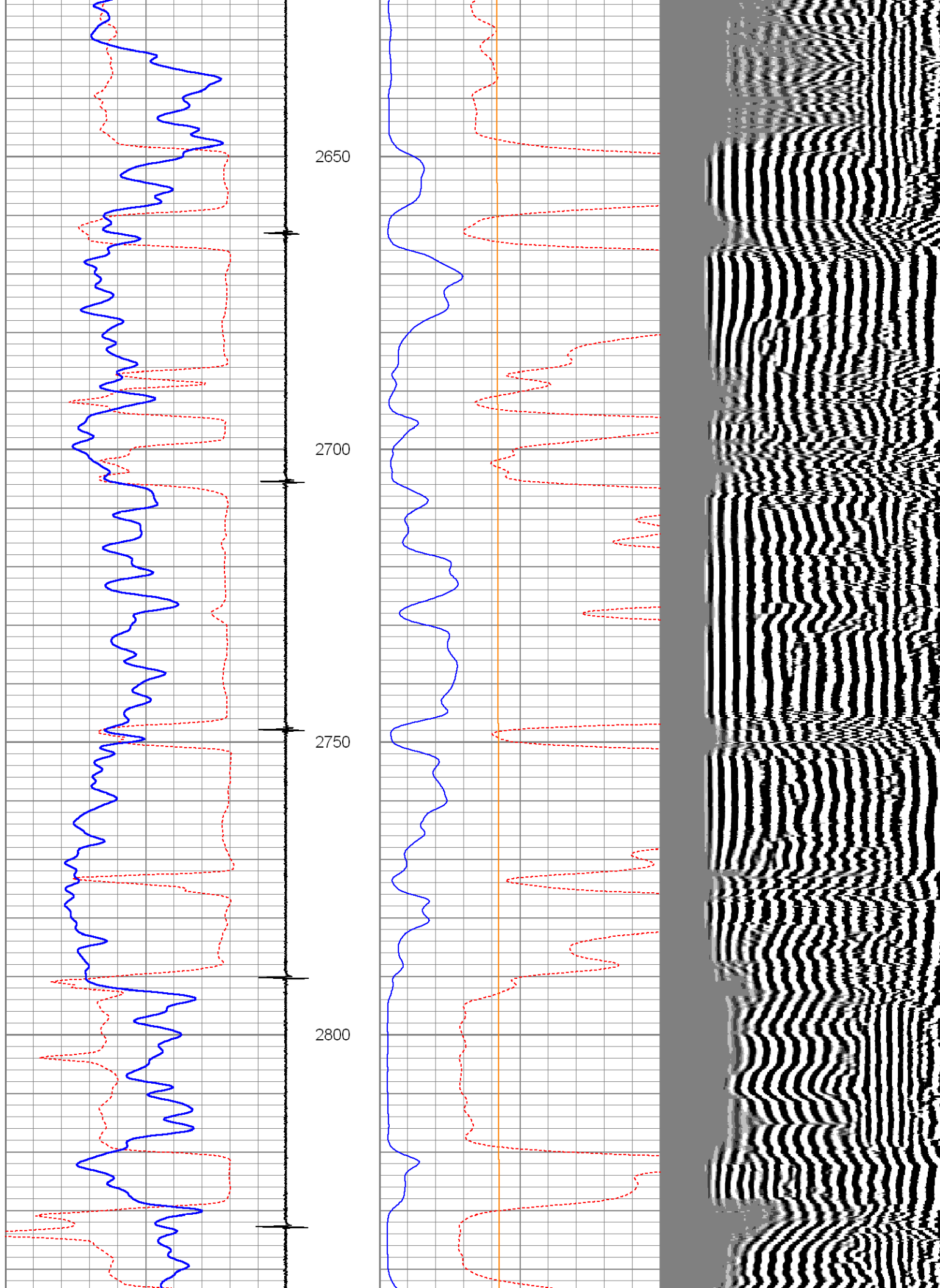


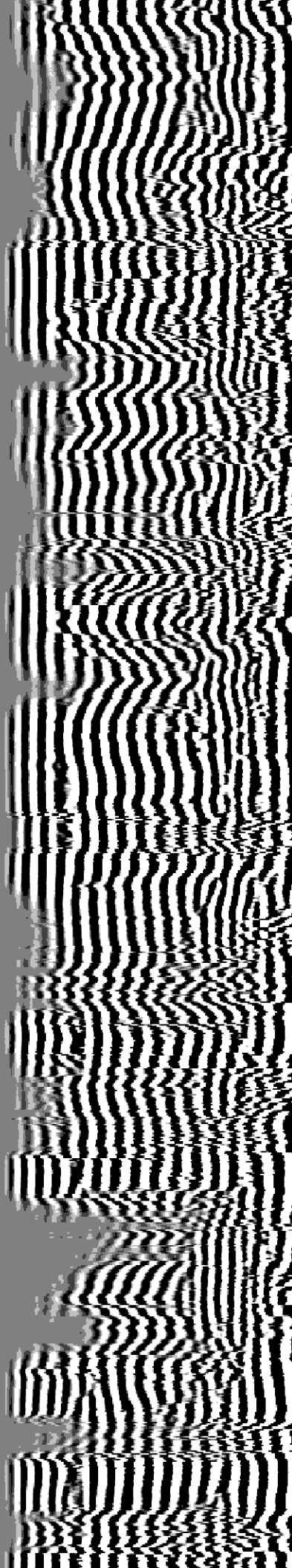
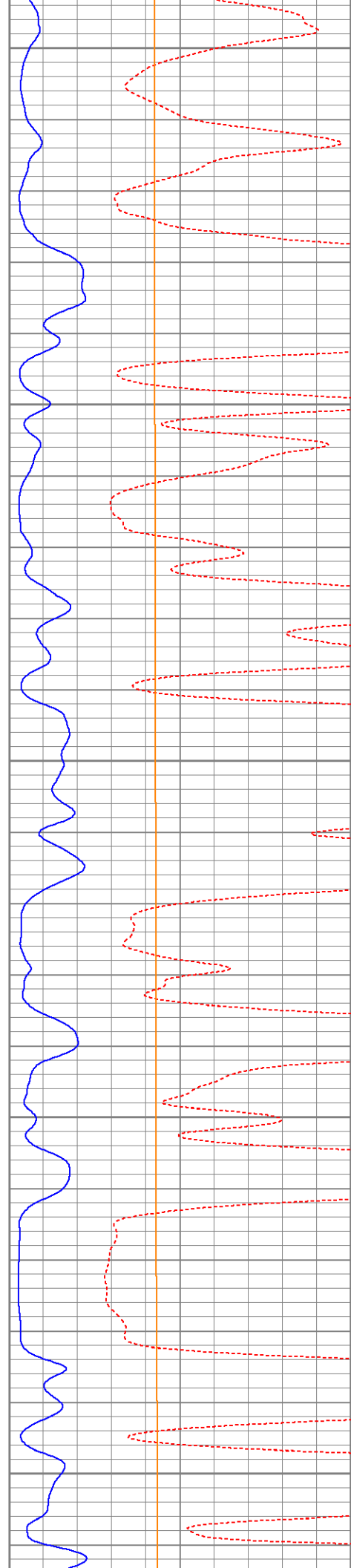
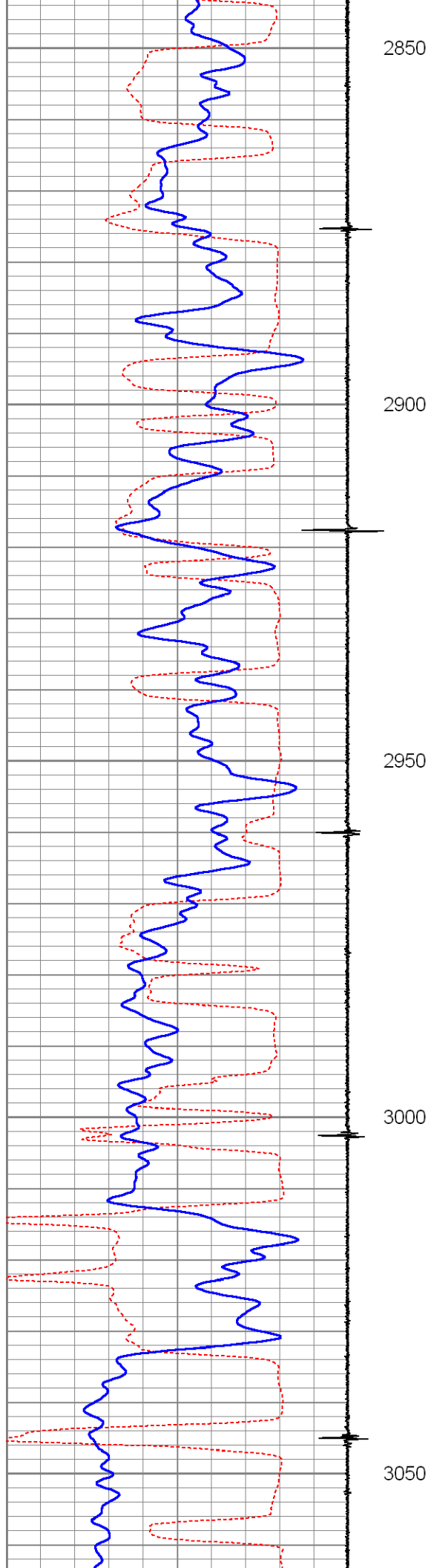


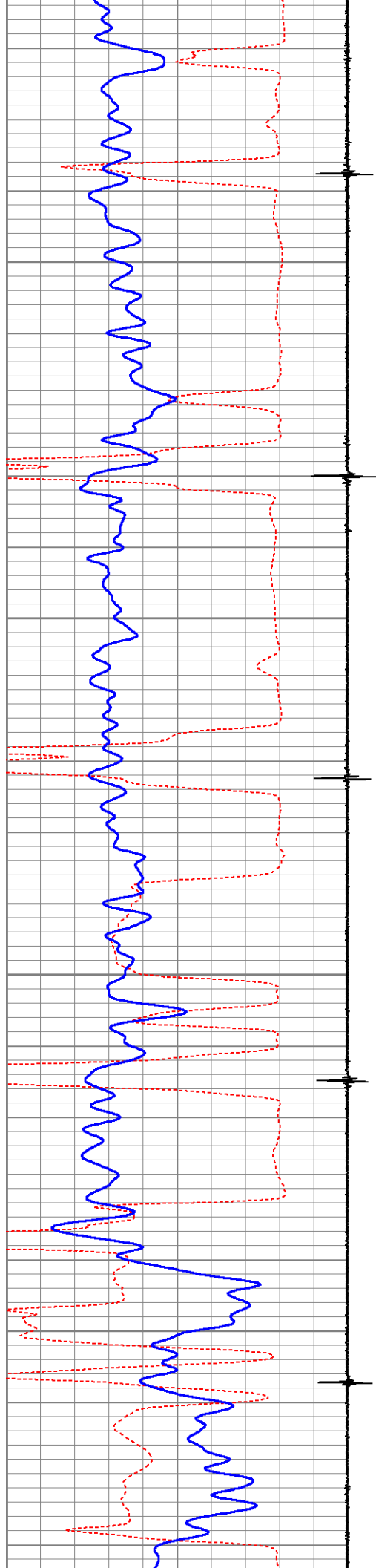










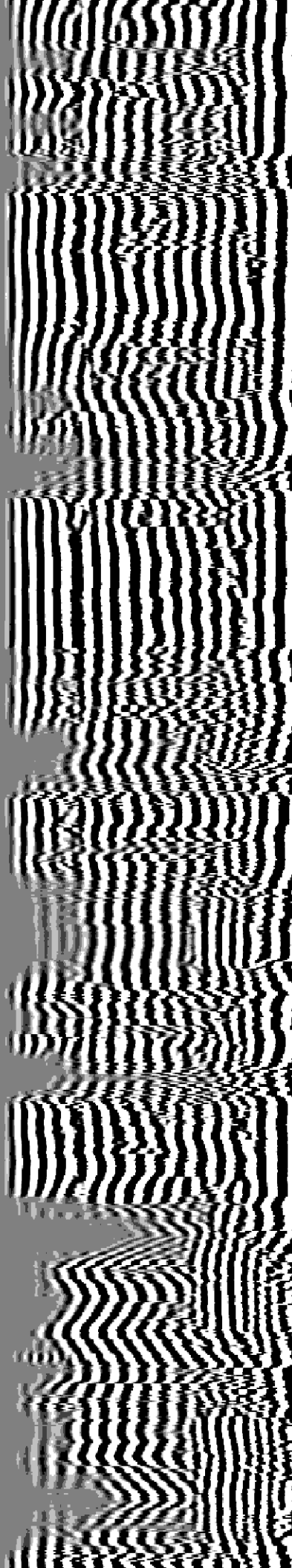
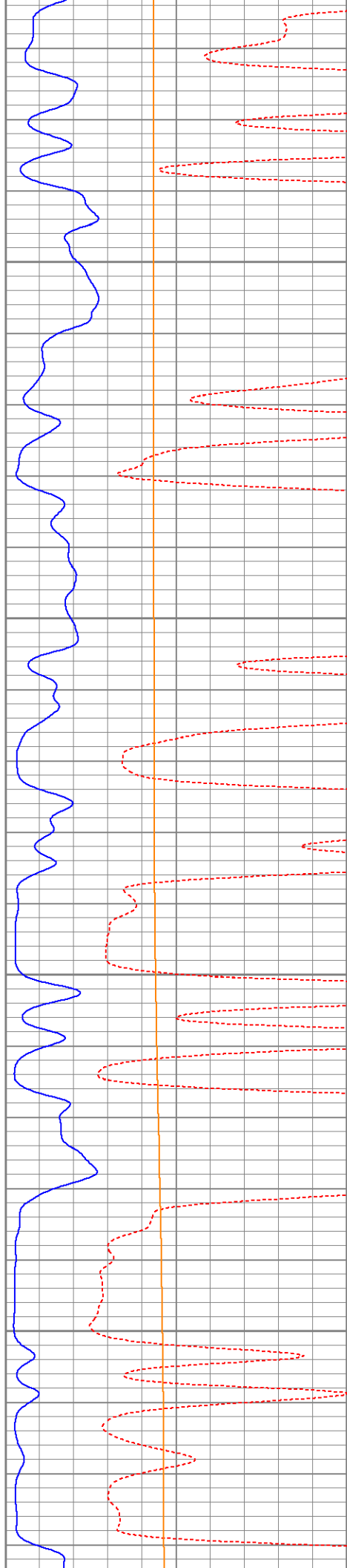


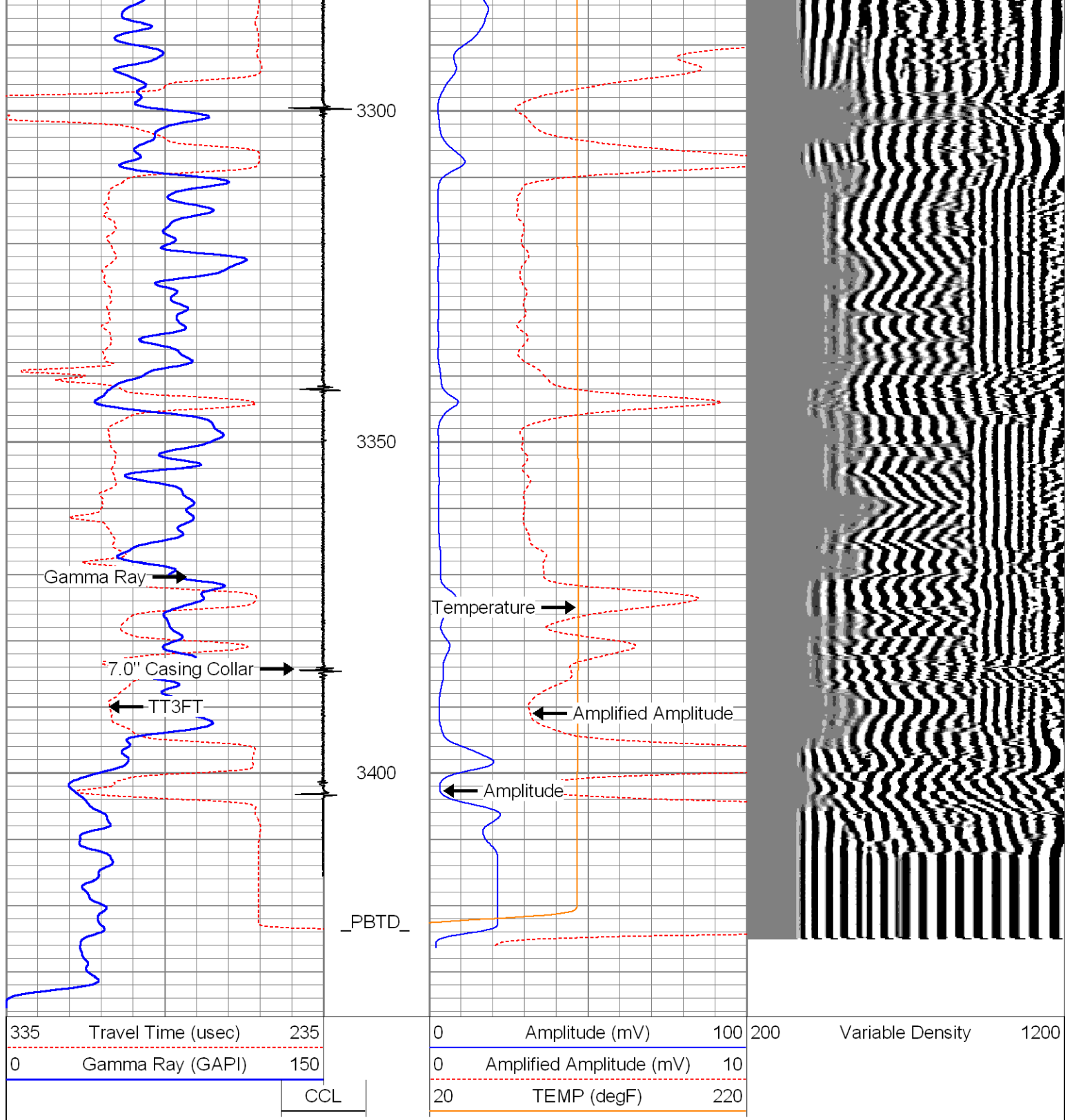
3100

3150

3200

3250





**CASED HOLE
SOLUTIONS**

A C&J ENERGY SERVICES COMPANY

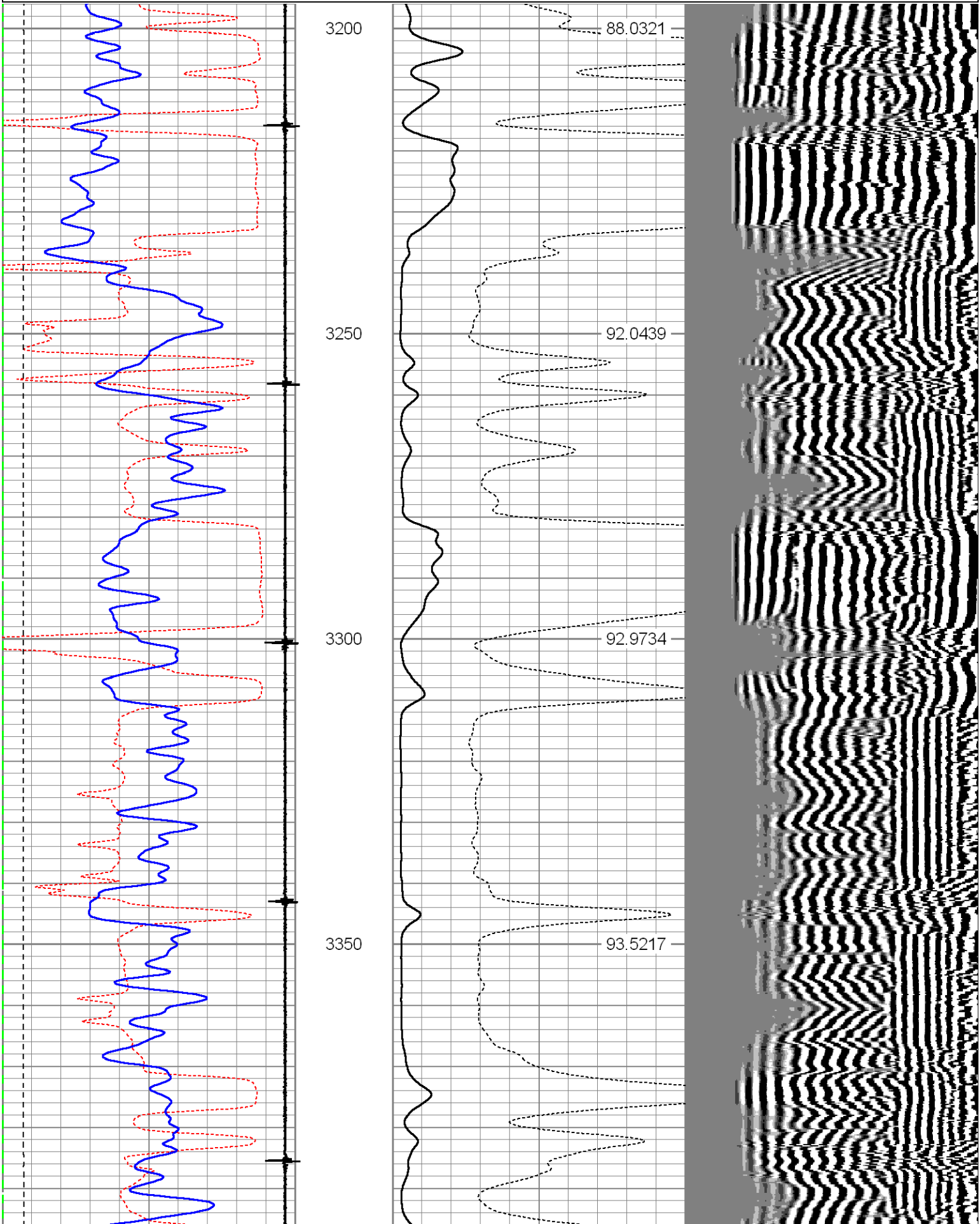
REPEAT SECTION "0" PSI

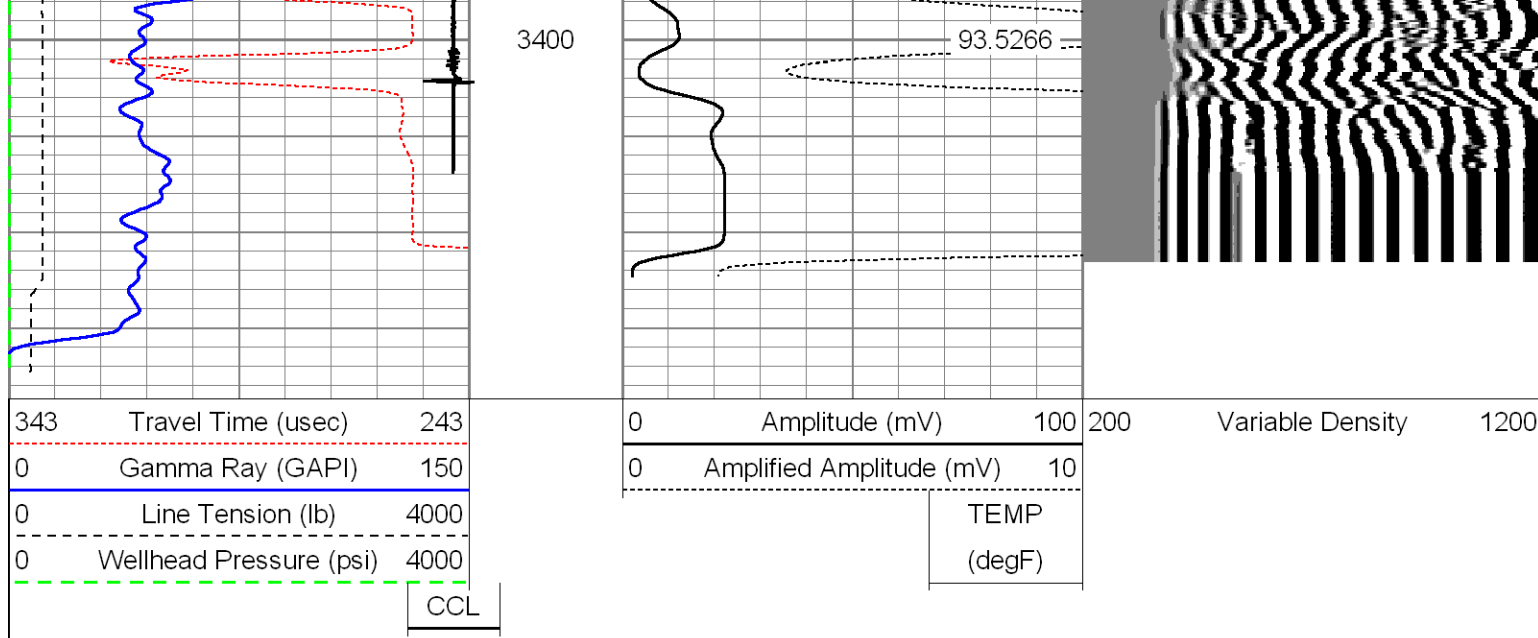
Database File: v-7185 koch25-43.db
 Dataset Pathname: pass2
 Presentation Format: cbltemp
 Dataset Creation: Sat Oct 19 09:56:58 2013 by Log 7.0 B1
 Charted by: Depth in Feet scaled 1:240

343	Travel Time (usec)	243	0	Amplitude (mV)	100	200	Variable Density	1200
-----	--------------------	-----	---	----------------	-----	-----	------------------	------

0	Gamma Ray (GAPI)	150
0	Line Tension (lb)	4000
0	Wellhead Pressure (psi)	4000
CCL		

0	Amplified Amplitude (mV)	10
TEMP		
(degF)		





Log Variables

Database: C:\Warrior\Data\v-7185 koch25-43.db

Dataset: field/well/run1/pass4.1

Top - Bottom

PPT usec	CASEWGHT lb/ft	MAXAMPL mV	MINAMPL mV	MINATTN db/ft	CASEOD in	PERFS	TDEPTH ft
0	26	62	1.8	0.8	7	0	0
BOTTEMP degF 100	BOREID in 7.875						

Calibration Report

Database File: v-7185 koch25-43.db

Dataset Pathname: pass4.1

Dataset Creation: Sat Oct 19 11:43:27 2013 by Calc 7.0 B1

Gamma Ray Calibration Report

Serial Number: GRSTIT1.3
 Tool Model: Titan169
 Performed: Thu Oct 17 15:35:43 2013

Calibrator Value: 1.0 GAPI

Background Reading: 0.0 cps
 Calibrator Reading: 1.0 cps

Sensitivity: 1.2500 GAPI/cps

CBL Calibration Report

Serial Number: 7CBLT2.75
 Tool Model: TEKCOTEMP
 Performed: Sat Oct 19 09:32:01 2013

Depth: 6.833 ft
 Casing Diameter: 7.000 in

3' Spacing 5' Spacing

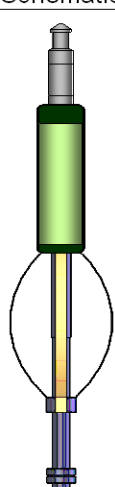

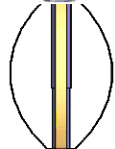
Signal Zero: 1.800 1.800 mV


Calibrated Amplitude:	62.165	62.165	mV
Reading at Signal Zero:	-0.007	-0.005	V
Reading in Free Pipe:	1.533	1.754	V
Gain:	39.181	34.317	
Offset:	2.091	1.968	


Temperature Calibration Report

Serial Number: 7CBLT2.75
 Tool Model: TEKCOTEMP
 Performed: Sat Oct 19 09:46:49 2013

	Reference	Reading
Low Reference:	0.00 degF	0.00 usec
High Reference:	1.00 degF	1.00 usec
Gain:	0.28	
Offset:	0.00	
Delta Spacing	1	

Sensor	Offset (ft)	Schematic	Description	Len (ft)	OD (in)	Wt (lb)
CCL	21.00		1.4375CHD Titan Cable Head 1 7/16	1.00	1.44	10.00
			VEL-CCL-CCL275 (4CCK2,75) 2 3/4" Tekco CCL	1.83	2.75	20.00
			CENTTEK1.1 1 3/4" APPLIED CENTRALIZER	2.90	1.75	10.00
TEMP	14.77					
WVF3FT	12.60		VEL-CBLTEKCOTEMP-TEKCOTEMP (7CE9.08.75) Tekco 2 3/4" Dual Receiver with Temp	9.08	2.75	102.00
WVF5FT	11.60					
WVFCAL	8.35					
WVFTEMP	8.35					
WVFSYNC	8.35		CENTTEK1.1 1 3/4" APPLIED CENTRALIZER	2.90	1.75	10.00

GR	3.71		1 3/4" APPLIED CENTRALIZER VEL-GR-Titan169 (GRSTIT1.3) 1 11/16" Titan 500F 120V Scint. GR	5.46	1.69	20.00
Dataset: v-7185 koch25-43.db: field/well/run1/pass2.3 Total Length: 23.17 ft Total Weight: 172.00 lb O.D. 2.75 in						

Company	Koch Exploration Company, LLC				
Well	Anthill Unit Wyatt #25-43 SWD				
Field	White River Dome				
County	Rio Blanco		State	CO.	
			Cement Bond Gamma Ray Ccl Temp Log		