

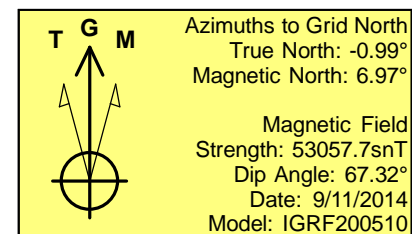
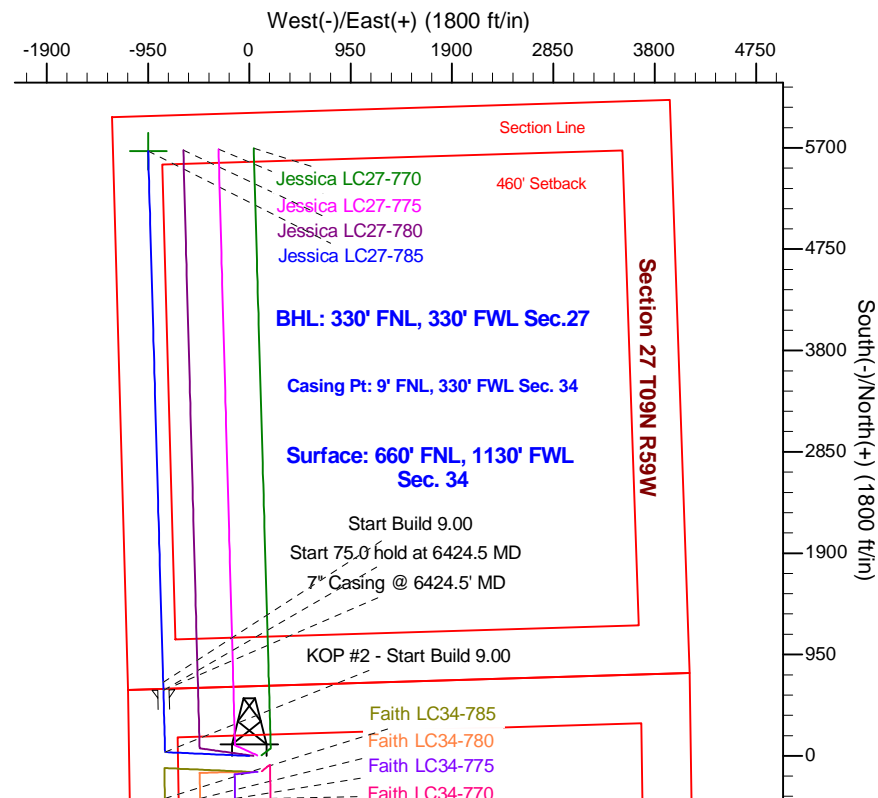
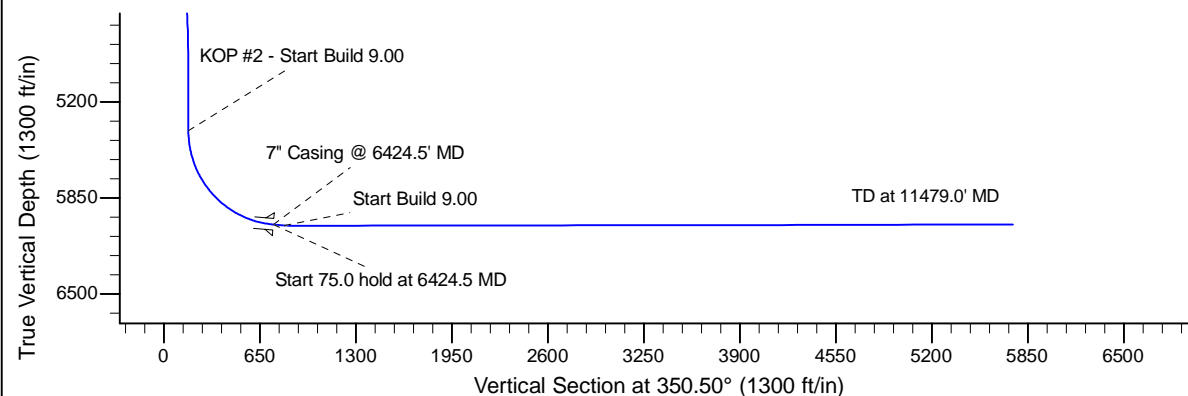
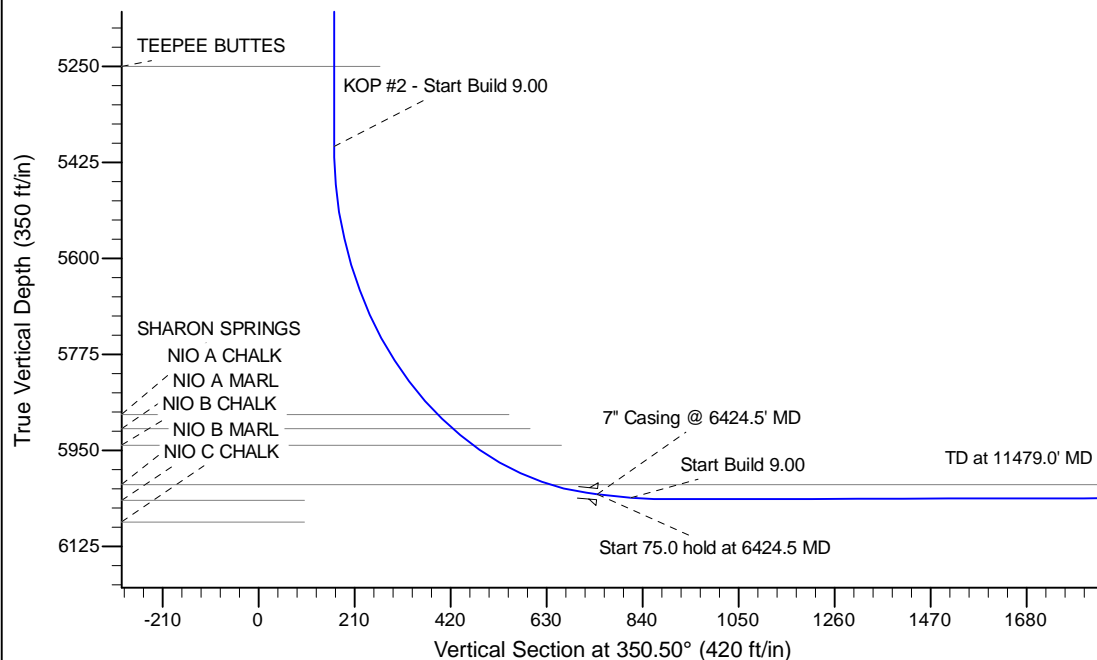
Project: Wattenberg Field  
 Site: LC (Sec.34-T09N-R59W) Weld County, CO  
 Well: Jessica LC27-785  
 Wellbore: Original Drilling  
 Design: APD - Rev 0

# Northern Region Drilling - Working

Geodetic System: US State Plane 1983  
 Datum: North American Datum 1983  
 Ellipsoid: GRS 1980  
 Zone: Colorado Northern Zone  
 System Datum: Mean Sea Level

## SECTION DETAILS

Sec	MD	Inc	Azi	TVD	+N/-S	+E/-W	Dleg	TFace	VSec	Target
1	0.0	0.00	0.00	0.0	0.0	0.0	0.00	0.00	0.0	
2	1000.0	0.00	0.00	1000.0	0.0	0.0	0.00	0.00	0.0	
3	1650.7	13.01	272.54	1645.1	3.3	-73.5	2.00	272.54	15.3	
4	4508.9	13.01	272.54	4429.9	31.7	-716.5	0.00	0.00	149.6	
5	5159.6	0.00	0.00	5075.0	35.0	-790.0	2.00	180.00	165.0	
6	5480.0	0.00	0.00	5395.4	35.0	-790.0	0.00	0.00	165.0	
7	6424.5	85.00	358.38	6029.6	615.9	-806.4	9.00	358.38	740.6	
8	6499.5	85.00	358.38	6036.2	690.6	-808.5	0.00	0.00	814.6	
9	6556.1	90.10	358.38	6038.6	747.2	-810.1	9.00	0.00	870.7	
10	11479.0	90.10	358.38	6030.0	5668.1	-948.9	0.00	0.00	5747.0	Jessica LC27-785 BHL 330'FNL, 330'FWL



## WELL DETAILS: Jessica LC27-785

Ground Level: 4829.0		Latitude		Longitude	
Northing	Easting				
0.0	0.0	1506019.71	3424366.42	40.712360	-103.969170

Plan: APD - Rev 0 (Jessica LC27-785/Original Drilling)

Created By: Shailey Jewell Date: 13:48, September 11 2014

OK to submit with 2A as per Noble Drilling  
 9/11/2014 2:05