

KOCH EXPLORATION COMPANY

LOCATION DRAWING FOR

WRD FEDERAL #30-34 ON EXISTING #29-31 PAD
SECTION 29, T2N, R96W, 6th P.M.
2007' FSL 752' FEL

FIGURE #5

SCALE: 1" = 200'

DATE SURVEYED: 04-10-14

SURVEYED BY: MARTIN PIERCE

DATE DRAWN: 03-11-13

DRAWN BY: J.G.G.

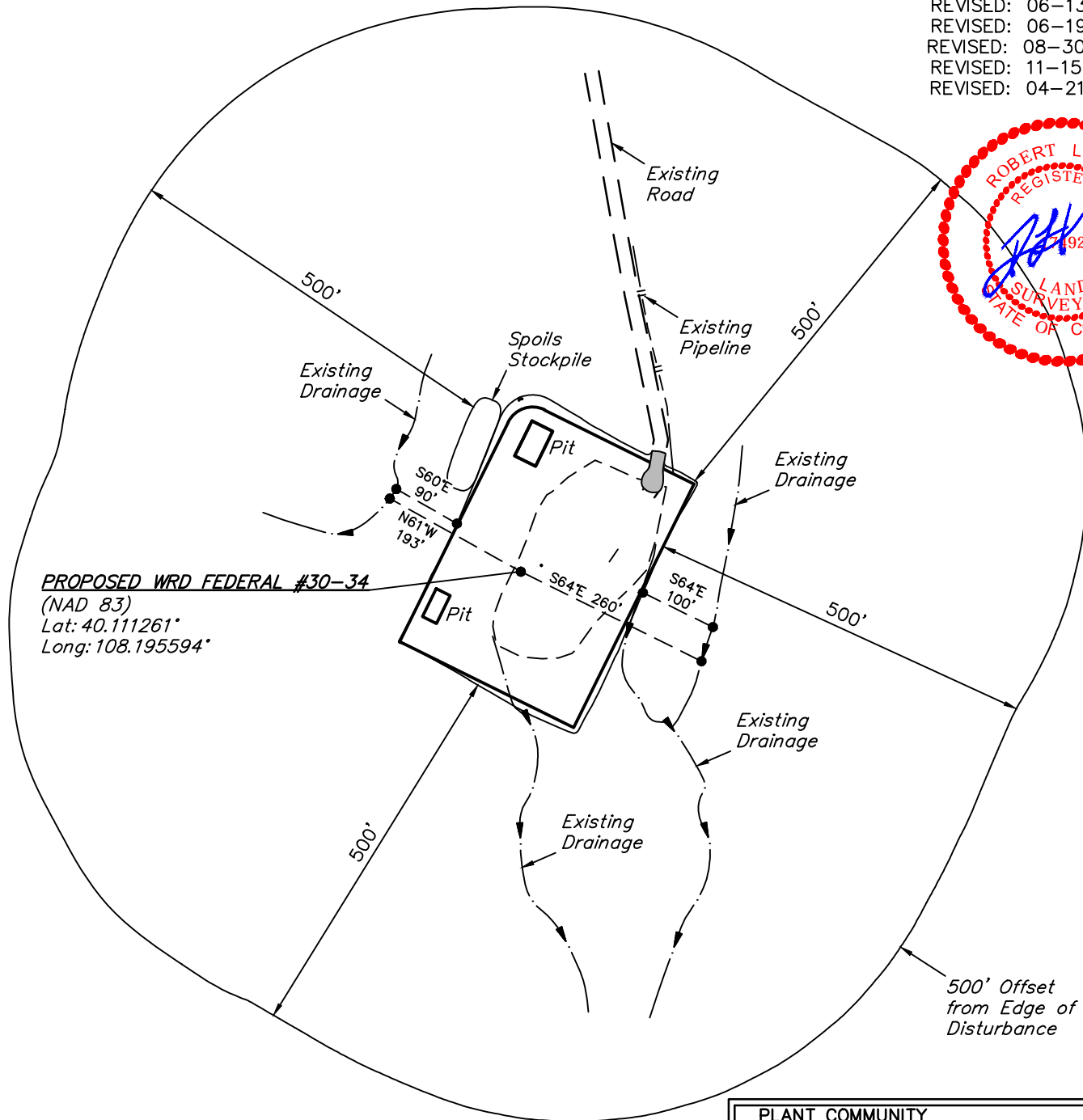
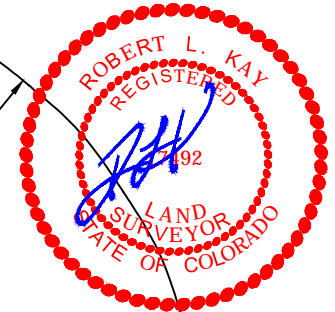
REVISED: 06-13-13 J.S.

REVISED: 06-19-13 J.S.

REVISED: 08-30-13 M.D.

REVISED: 11-15-13 M.D.

REVISED: 04-21-14 T.B.



CURRENT LAND USE

CROP LAND: ☐ IRRIGATED ☐ DRY LAND ☐ IMPROVED PASTURE ☐ HAY MEADOW ☐ CRP
NON-CROP LAND: ☐ RANGELAND ☐ TIMBER ☐ RECREATIONAL ☐ OTHER (Describe) _____
SUBDIVIDED: ☐ INDUSTRIAL ☐ COMMERCIAL ☐ RESIDENTIAL _____

FUTURE LAND USE

CROP LAND: ☐ IRRIGATED ☐ DRY LAND ☐ IMPROVED PASTURE ☐ HAY MEADOW ☐ CRP
NON-CROP LAND: ☐ RANGELAND ☐ TIMBER ☐ RECREATIONAL ☐ OTHER (Describe) _____
SUBDIVIDED: ☐ INDUSTRIAL ☐ COMMERCIAL ☐ RESIDENTIAL _____

PLANT COMMUNITY

☐ DISTURBED GRASSLAND
☐ NATIVE GRASSLAND
☐ SHRUB LAND
☐ PLAINS RIPARIAN
☐ MOUNTAIN RIPARIAN
☐ FOREST LAND
☐ WETLANDS AQUATIC
☐ ALPINE
☐ OTHER (Describe): _____

UINTAH ENGINEERING & LAND SURVEYING

85 So. 200 East * Vernal, Utah 84078 * (435) 789-1017