

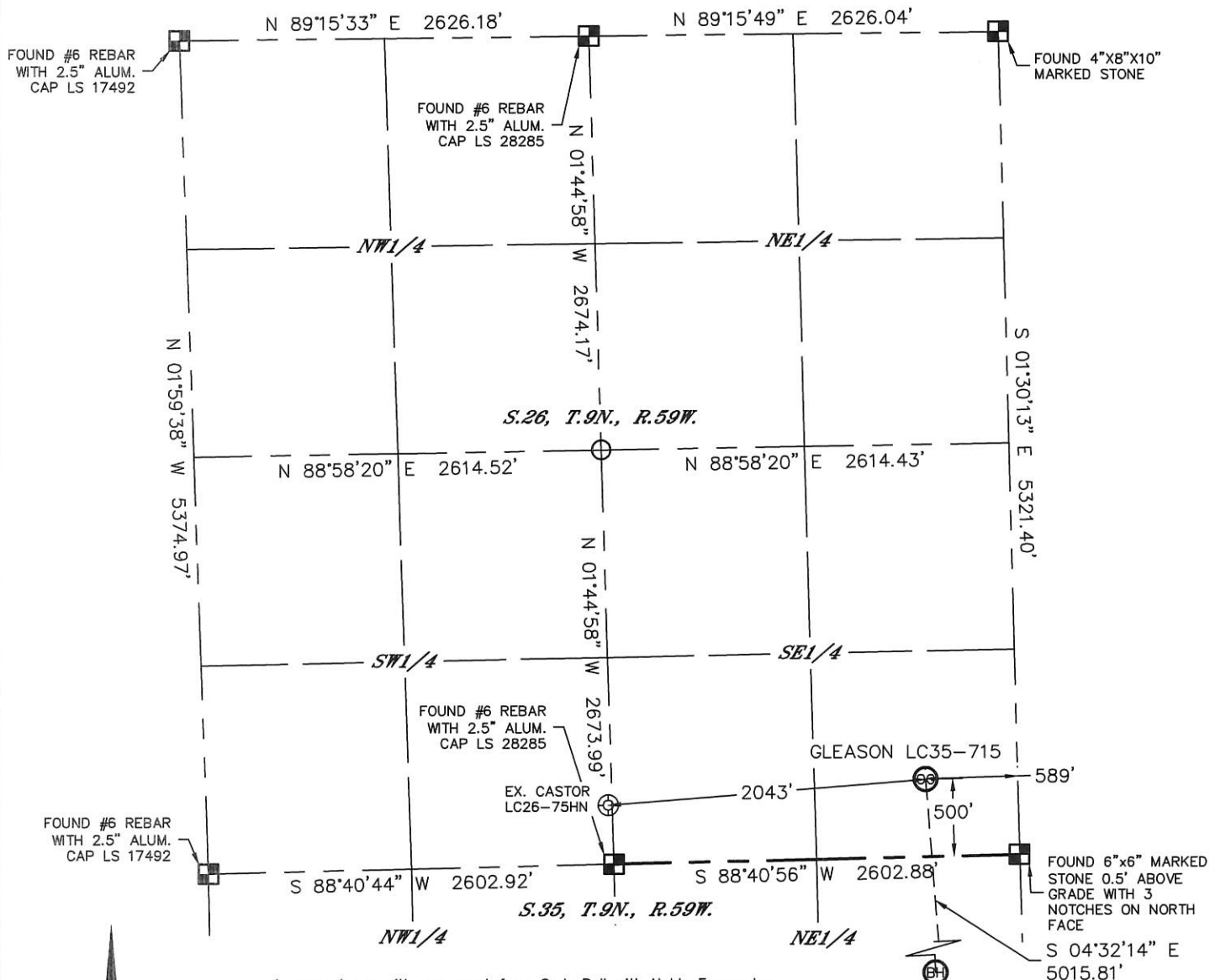


Lat40°, Inc. 1635 Foxtrail Drive, Suite 325 Loveland, CO 970-776-3321

WELL LOCATION CERTIFICATE

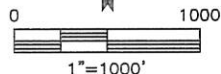
SECTION: 26
TOWNSHIP: 9N
RANGE: 59W

THIS MAP DOES NOT REPRESENT A BOUNDARY SURVEY



In accordance with a request from Cody Ball with Noble Energy Inc. Lat40°, Inc. has determined the surface location of the GLEASON LC35-715 to be 500' from the SOUTH line and 589' from the EAST line as measured at right angles from the section lines of Section 26, Township 9 North, Range 59 West and the bottom hole to be 810' from the SOUTH line and 330' from the EAST line as measured at right angles from the section lines of Section 35, Township 9 North, Range 59 West of the Sixth Principal Meridian, County of Weld, State of Colorado.

I hereby state that this Well Location Certificate was prepared by me, or under my direct supervision, that the fieldwork was completed on 7/24/2014, for and on behalf of Noble Energy Inc. That this is not a Land Survey Plat or an Improvement Survey Plat, and that it is not to be relied upon for establishment of fence, building, or other future improvement lines.



NOTE:

- 1) Bearings shown are Grid Bearings of the Colorado State Plane Coordinate System, North Zone, North American Datum 1983/2007. The lineal dimensions as contained herein are based upon the "U.S. Survey Foot."
- 2) Ground elevations are based on an observed GPS elevation (NAVD 1988 DATUM).
- 3) IMPROVEMENTS: See LOCATION DRAWING for all visible improvements within 500' of disturbed area.
- 4) SURFACE USE: RANGELAND
- 5) INSTRUMENT OPERATOR: BRIAN ROTTINGHAUS
- 6) NEAREST EXISTING WELL: CASTOR LC26-75HN, 2043' SW
NEAREST CULTURAL ITEMS:
BUILDING: 5280'+
BUILDING UNIT: 5280'+
HIGH OCCUPANCY BUILDING UNIT: 5280'+
DESIGNATED OUTSIDE ACTIVITY AREA: 5280'+
PUBLIC ROAD: 5280'+
ABOVEGROUND UTILITY: 405' S
RAILROAD: 5280'+
PROPERTY LINE: 500' S

SURFACE LOCATION
LAT: 40.71574N
LONG: 103.93760W
PDOP: 1.5
ELEV: 4889'
1/4, 1/4: SE1/4SE1/4

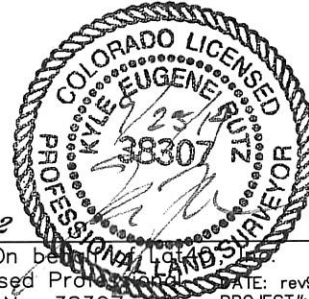
BOTTOM HOLE
LAT: 40.70200N
LONG: 103.93649W

LEGEND

- = ALIQUOT MONUMENT AS DESCRIBED
- = CALCULATED POSITION

SHEET 1 OF 2

Kyle E. Rutz-On behalf of Noble Energy Inc.
Colorado Licensed Professional Land Surveyor No. 38307
DATE: rev9/25/2014
PROJECT#: 2013186



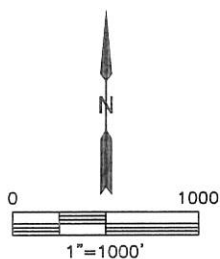
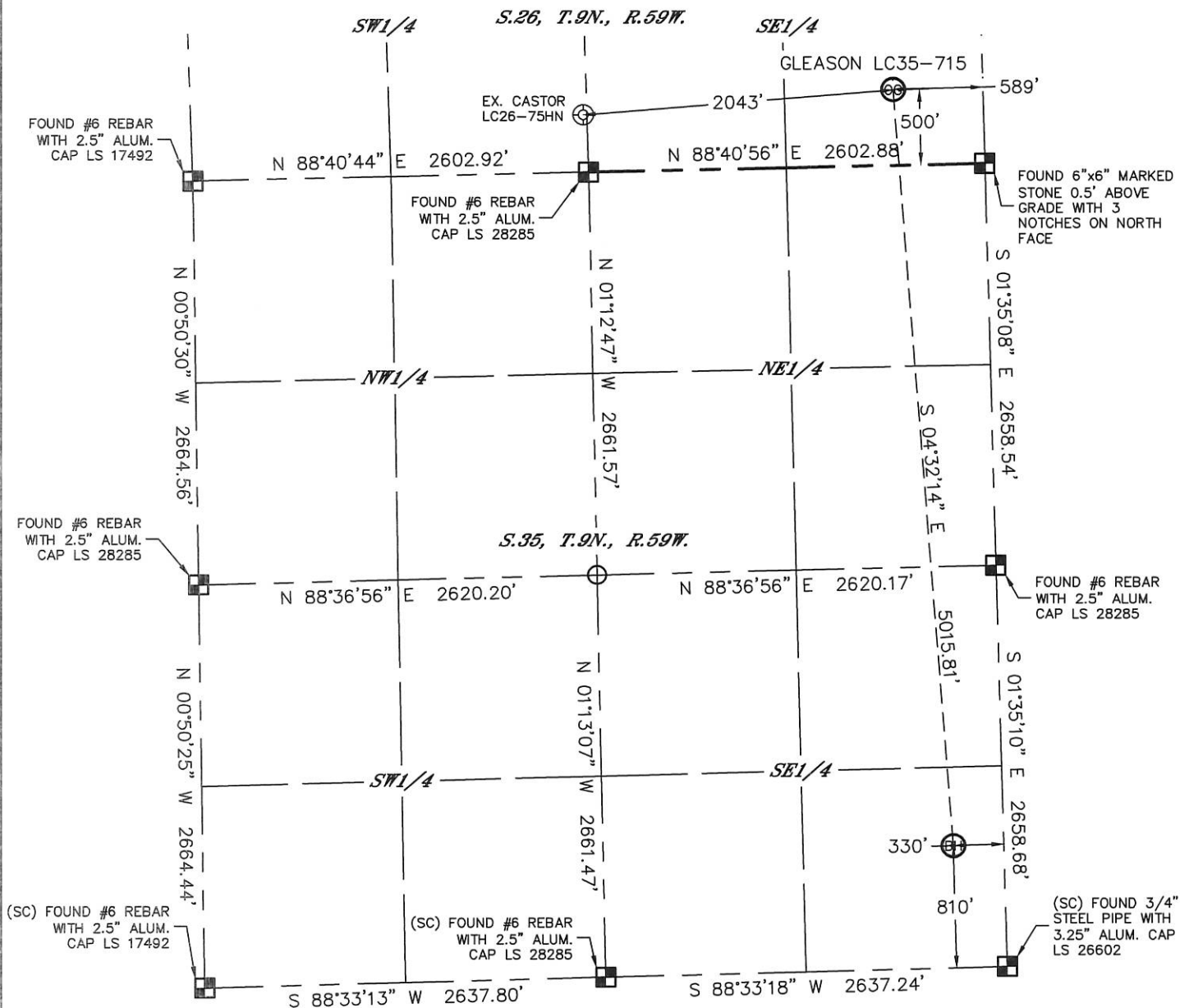


Lat40°, Inc. 1635 Foxtrail Drive, Suite 325 Loveland, CO 970-776-3321

WELL LOCATION CERTIFICATE

THIS MAP DOES NOT REPRESENT A BOUNDARY SURVEY

SECTION: 26
TOWNSHIP: 9N
RANGE: 59W



LEGEND

- = ALIQUOT MONUMENT AS DESCRIBED
- = CALCULATED POSITION

SHEET 2 OF 2

Kyle E. Rutz-On behalf of
Colorado Licensed Professional
Land Surveyor No. 38307
DATE: rev9/25/2014
PROJECT#: 2013186



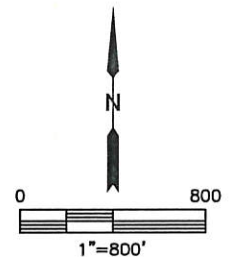
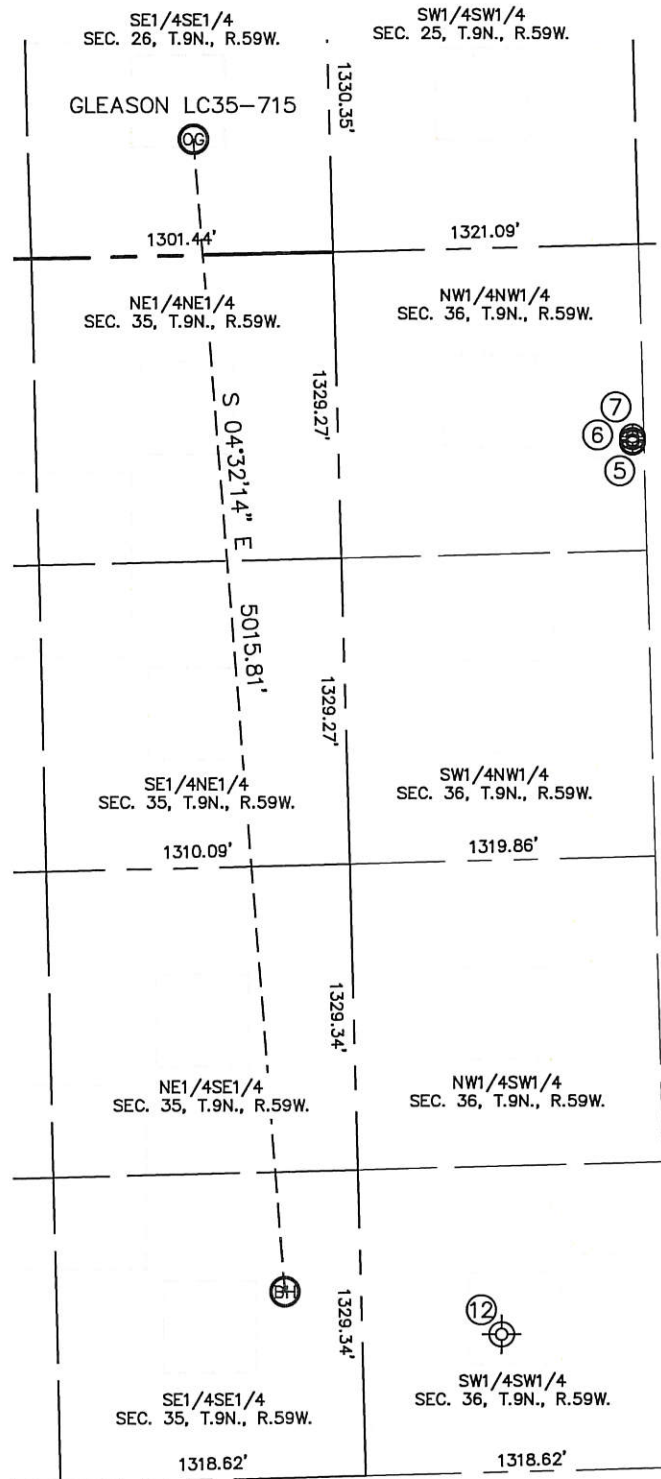


Lat40°, Inc. 1635 Foxtrail Drive, Suite 325 Loveland, CO 970-776-3321

SITE SKETCH

GLEASON LC35-715

SECTION: 26
TOWNSHIP: 9N
RANGE: 59W



WELL NO.	WELL NAME	SHL FOOTAGE				SHL LAT°	SHL LONG°	PDOP	ELEV (FT.)	1/4/1/4
5	CASTOR 1-36-11-9-59	860	FNL	1270	FWL	40.71205	-103.93085	1.6	4889	NWNW
6	CASTOR 2-36-11-9-59	851	FNL	1271	FWL	40.71207	-103.93085	2.0	4889	NWNW
7	CASTOR 3-36-11-9-59	836	FNL	1270	FWL	40.71211	-103.93085	1.6	4889	NWNW
12	STATE 5-36 (P/A)	600	FSL	600	FWL	40.70129	-103.93315	NA	4832	SWSW

NOTE: THE ABANDONED WELL DATA SHOWN IN RED ABOVE WAS OBTAINED FROM COGCC SCOUT CARDS.

DATE: rev9/25/2014
PROJECT#: 2013186