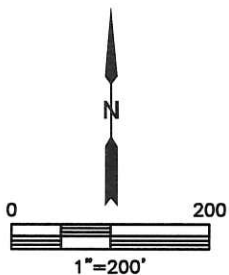
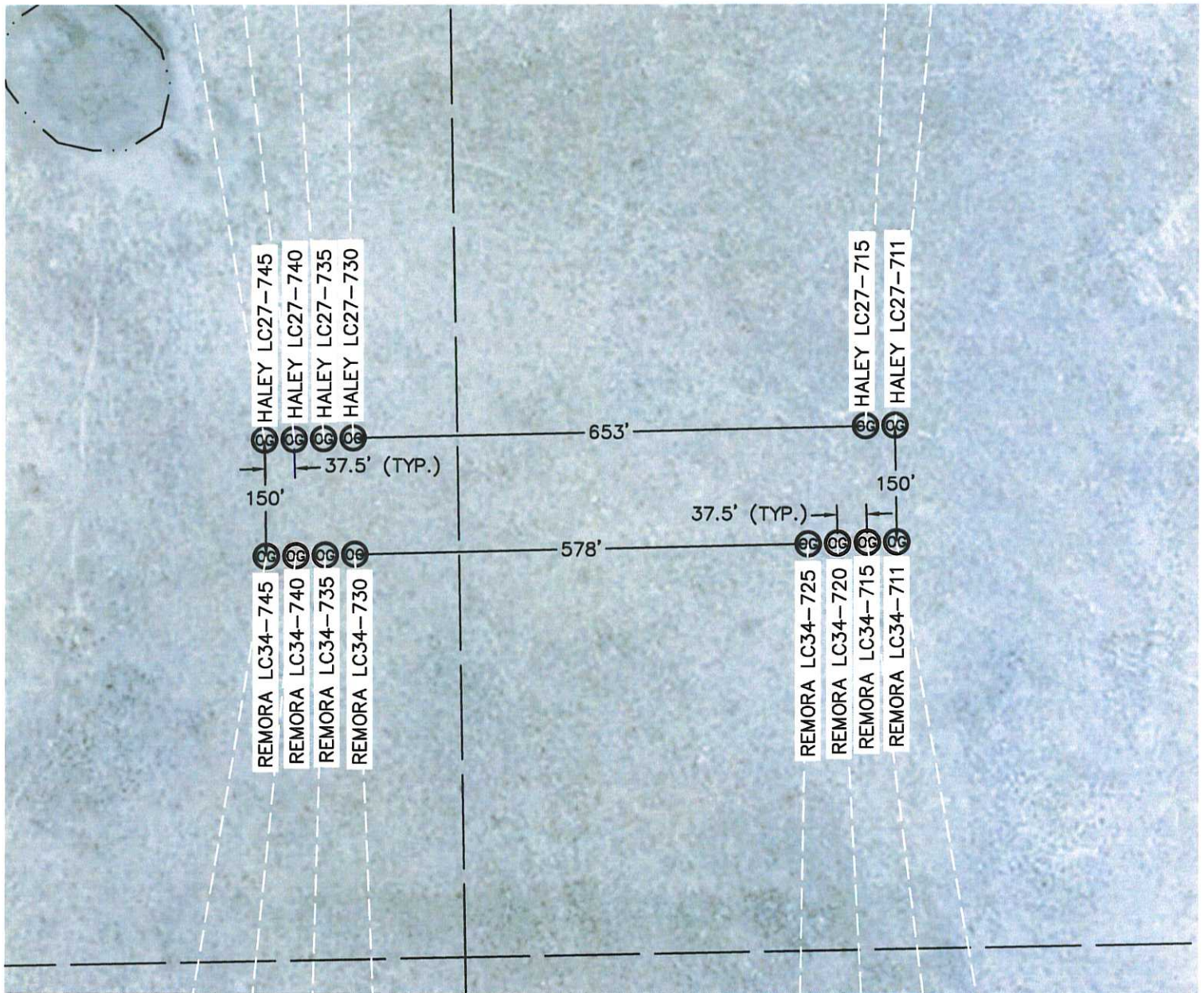




MULTI-WELL PLAN

REMORA LC34-745 PAD

SECTION: 34
TOWNSHIP: 9N
RANGE: 59W





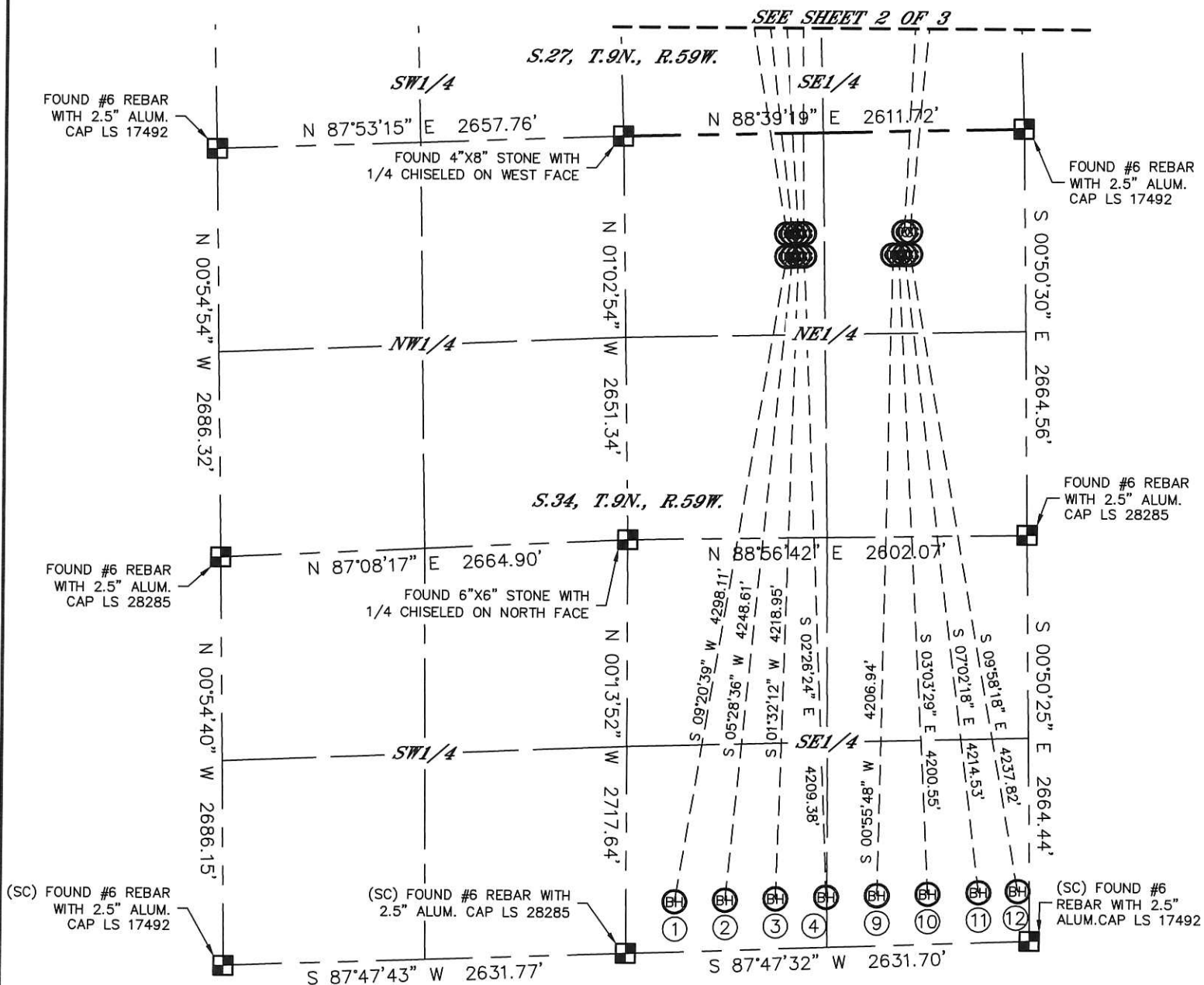
Lat40°, Inc. 1635 Foxtrail Drive, Suite 325 Loveland, CO 970-776-3321

MULTI-WELL PLAN

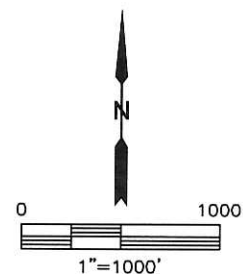
REMORA LC34-745 PAD

SECTION: 34
TOWNSHIP: 9N
RANGE: 59W

THIS MAP DOES NOT REPRESENT A BOUNDARY SURVEY



#	WELL NAME	BHL FOOTAGE			BHL LAT °	BHL LONG °	1/4/1/4	
1	REMORA LC34-745	330	FSL	2310	FEL	40.70045	-103.96262	SWSE
2	REMORA LC34-740	330	FSL	1980	FEL	40.70047	-103.96143	SWSE
3	REMORA LC34-735	330	FSL	1650	FEL	40.70049	-103.96024	SWSE
4	REMORA LC34-730	330	FSL	1320	FEL	40.70050	-103.95905	SWSE
9	REMORA LC34-725	330	FSL	990	FEL	40.70052	-103.95786	SESE
10	REMORA LC34-720	330	FSL	660	FEL	40.70054	-103.95667	SESE
11	REMORA LC34-715	330	FSL	330	FEL	40.70056	-103.95548	SESE
12	REMORA LC34-711	330	FSL	75	FEL	40.70058	-103.95456	SESE



SHEET 1 OF 3

DATE: 5/29/2014
PROJECT#: 2013186



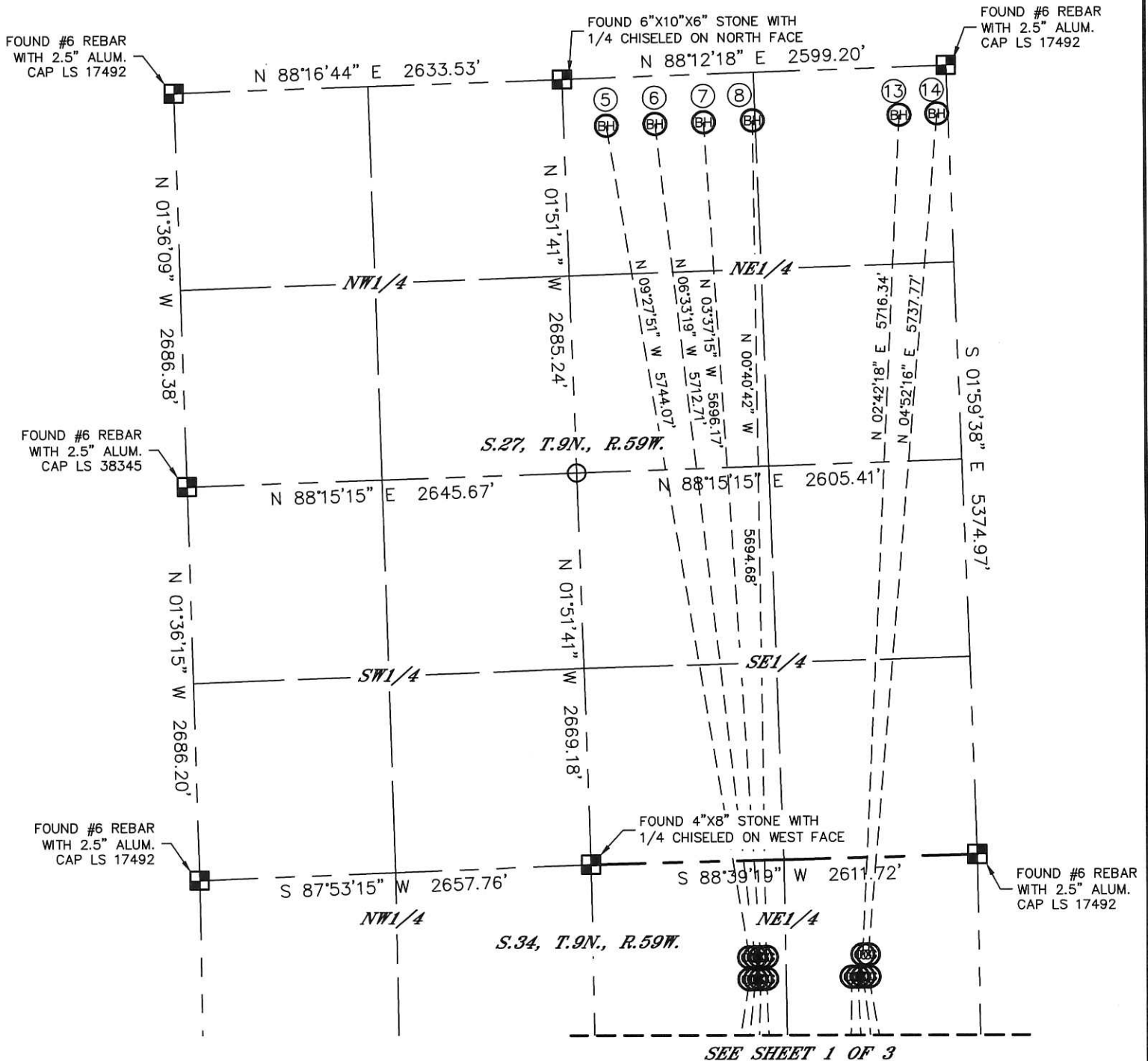
Lat40°, Inc. 1635 Foxtrail Drive, Suite 325 Loveland, CO 970-776-3321

MULTI-WELL PLAN

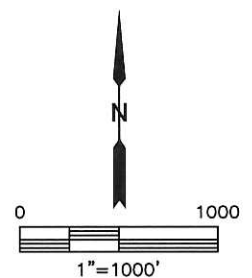
REMORA LC34-745 PAD

THIS MAP DOES NOT REPRESENT A BOUNDARY SURVEY

SECTION: 34
TOWNSHIP: 9N
RANGE: 59W



#	WELL NAME	BHL FOOTAGE		BHL LAT °	BHL LONG °	1/4/1/4
5	HALEY LC27-745	330 FNL	2310 FEL	40.72805	-103.96288	NWNE
6	HALEY LC27-740	330 FNL	1980 FEL	40.72806	-103.96169	NWNE
7	HALEY LC27-735	330 FNL	1650 FEL	40.72808	-103.96050	NWNE
8	HALEY LC27-730	330 FNL	1320 FEL	40.72809	-103.95931	NWNE
13	HALEY LC27-715	330 FNL	330 FEL	40.72813	-103.95574	NENE
14	HALEY LC27-711	330 FNL	75 FEL	40.72814	-103.95482	NENE



SHEET 2 OF 3

DATE: 5/29/2014
PROJECT#: 2013186