

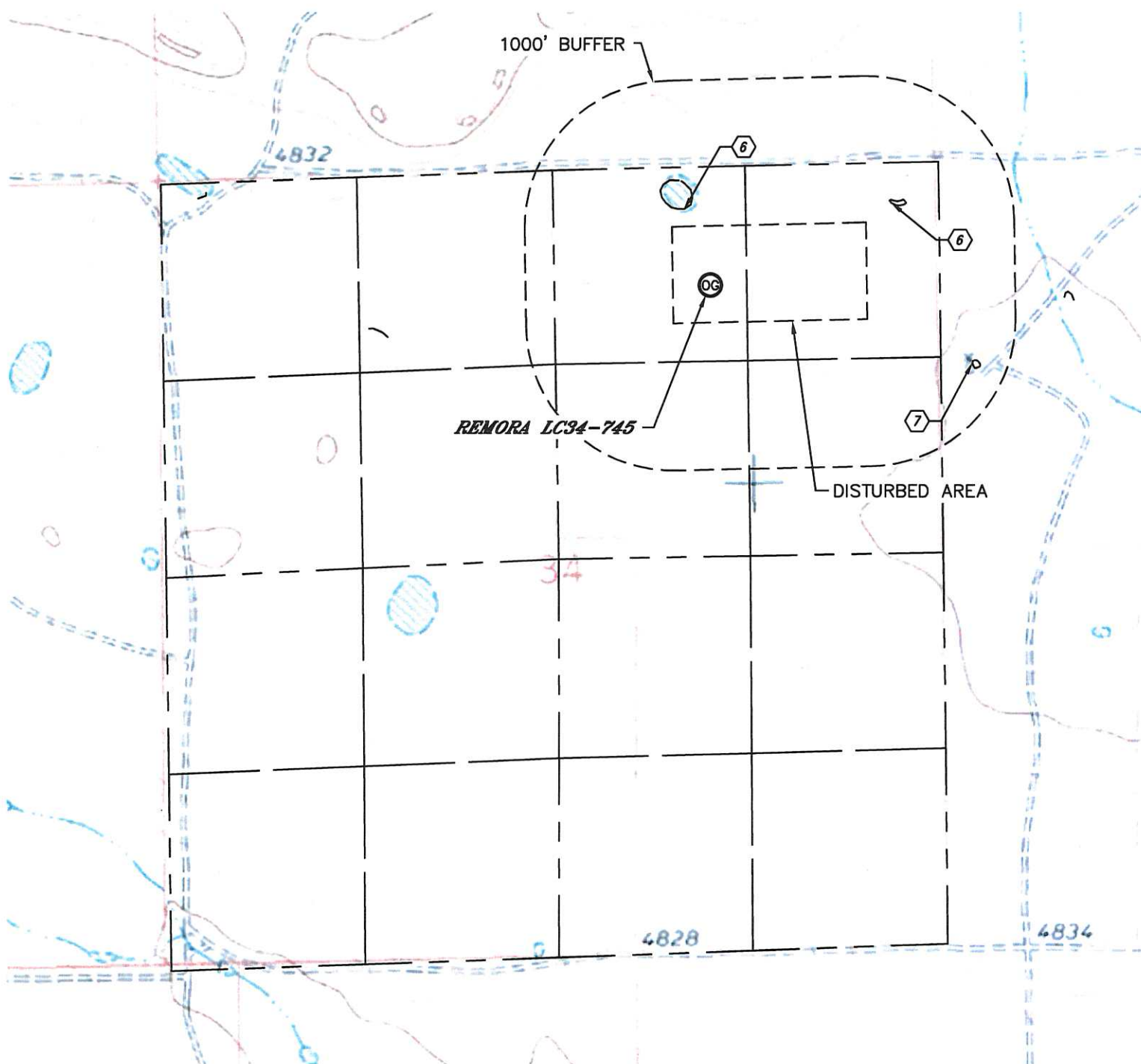


Lat40°, Inc. 1635 Foxtrail Drive, Suite 325 Loveland, CO 970-776-3321

HYDROLOGY MAP

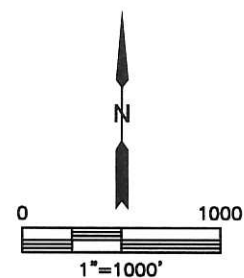
REMORA LC34-745 PAD

SECTION: 34
TOWNSHIP: 9N
RANGE: 59W



⑥ LOW AREA 551' NW, 1346' NE

⑦ POND 1847' SE



DATE: 5/29/2014
PROJECT#: 2013186