

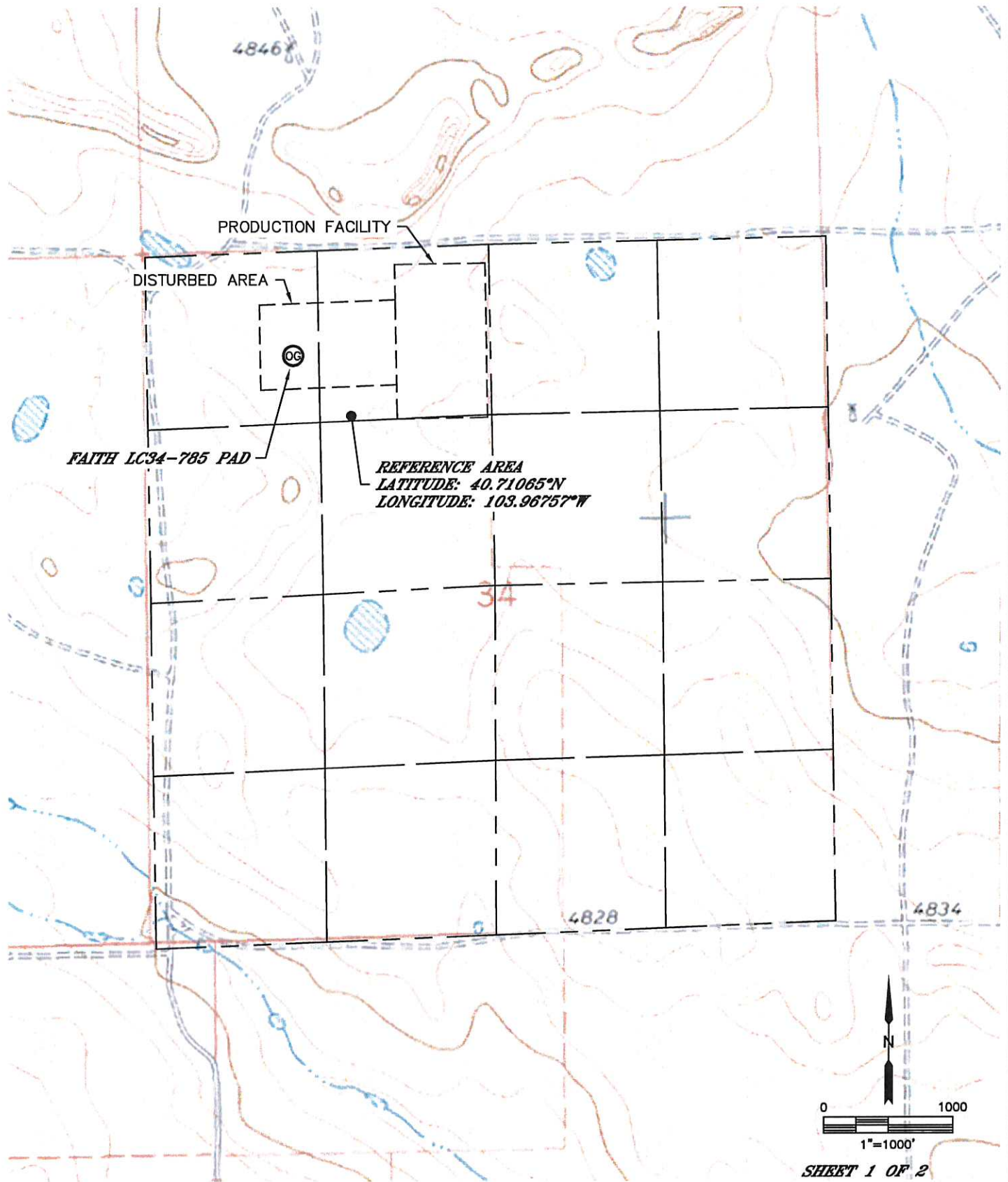


Lat40°, Inc. 1635 Foxtrail Drive, Suite 325 Loveland, CO 970-776-3321

# REFERENCE AREA MAP

FAITH LC34-785 PAD

SECTION: 34  
TOWNSHIP: 9N  
RANGE: 59W



**REFERENCE AREA**  
LATITUDE: 40.71065°N  
LONGITUDE: 103.96757°W

**SHEET 1 OF 2**

DATE: 6/6/2014  
PROJECT#: 2013186