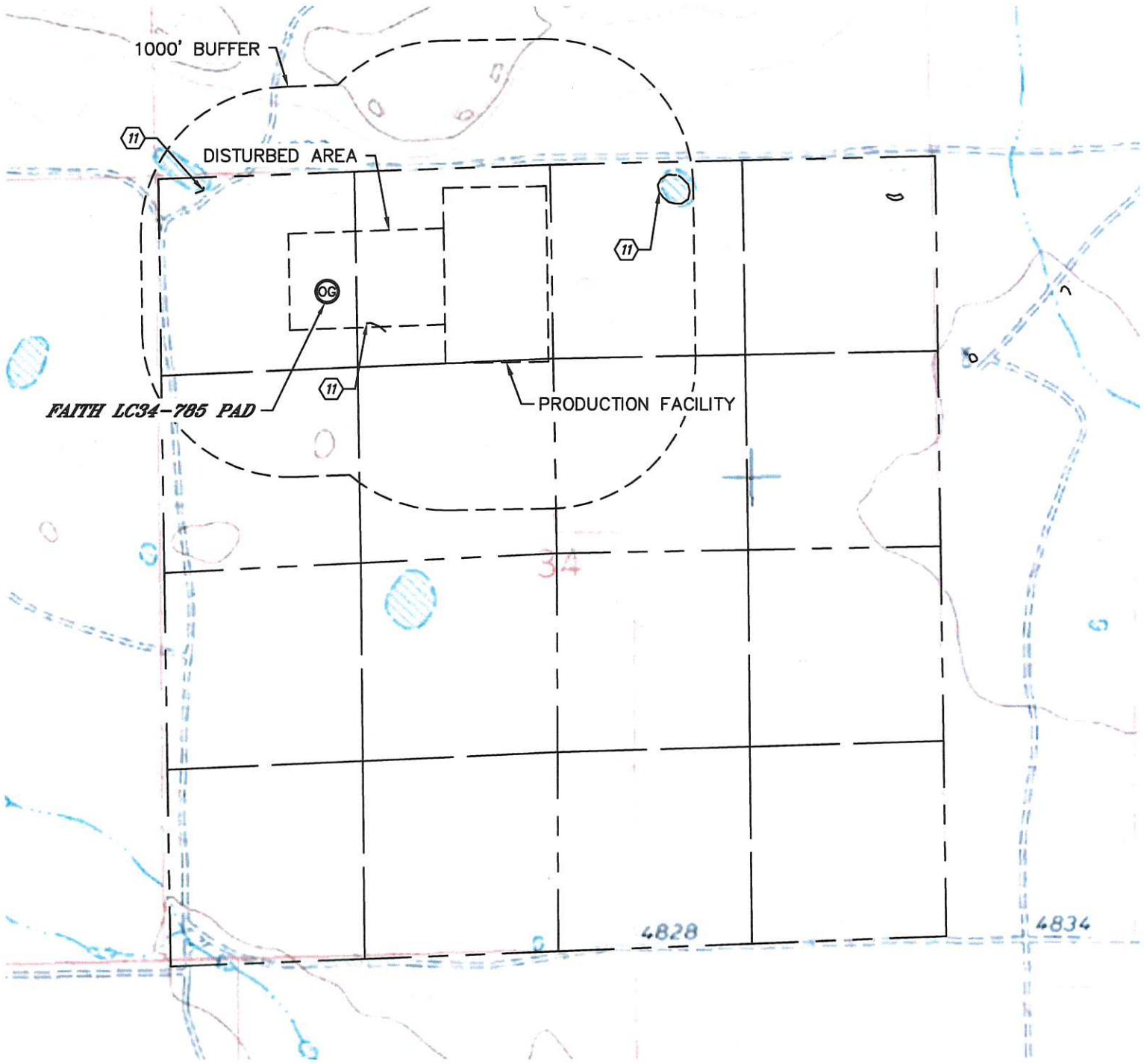




HYDROLOGY MAP

FAITH LC34-785 PAD

SECTION: 34
TOWNSHIP: 9N
RANGE: 59W



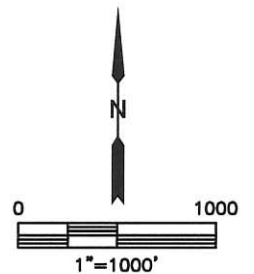
FAITH LC34-785 PAD

1000' BUFFER

DISTURBED AREA

PRODUCTION FACILITY

Ⓜ LOW AREA 348' SE, 1086' NW, 2358' NE



DATE: 5/29/2014
PROJECT#: 2013186