



NABORS

**COMPLETION
& PRODUCTION
SERVICES CO.**

**MICRO
LOG**

Company Well Field County State		MULL DRILLING COMPANY, INC. CHAMPLIN - ALDRICH 'A' #7 CHEYENNE WELLS CHEYENNE COLORADO	
Company Well Field County State		MULL DRILLING COMPANY, INC. CHAMPLIN - ALDRICH 'A' #7 CHEYENNE WELLS CHEYENNE COLORADO	
Location: Permanent Datum Log Measured From Drilling Measured From		API # : 05-017-07795-00 1982' FSL & 900' FEL GROUND LEVEL KELLY BUSHING 11' A.G.L. KELLY BUSHING SEC 33 TWP 13S RGE 44W Elevation CDL/CNL/PE DIL/SONIC Elevation K.B. 4276 D.F. 4274 G.L. 4265	
Date	9/16/14		
Run Number	TWO		
Depth Driller	5510		
Depth Logger	5510		
Bottom Logged Interval	5494		
Top Log Interval	4000		
Casing Driller	8 5/8" @ 1745'		
Casing Logger	1738		
Bit Size	7 7/8"		
Type Fluid in Hole	CHEMICAL MUD	CHLORIDES 3,300 PPM	
Density / Viscosity	9.1/56		
pH / Fluid Loss	9.0/8.0		
Source of Sample	FLOWLINE		
Rim @ Meas. Temp	.950 @ 70F		
Rmf @ Meas. Temp	.713 @ 70F		
Rmc @ Meas. Temp	1.14 @ 70F		
Source of Rmf / Rmc	MEASUREMENT		
Rim @ BHT	.512 @ 130F		
Time Circulation Stopped	5.5 HOURS		
Time Logger on Bottom	12:30 A.M.		
Maximum Recorded Temperature	130F		
Equipment Number	4854		
Location	HAYS, KANSAS		
Recorded By	JEFF LUEBBERS		
Witnessed By	PHIL ASKEY		

<<< Fold Here >>>

All interpretations are opinions based on inferences from electrical or other measurements and we cannot and do not guarantee the accuracy or correctness of any interpretation, and we shall not, except in the case of gross or willful negligence on our part, be liable or responsible for any loss, costs, damages, or expenses incurred or sustained by anyone resulting from any interpretation made by any of our officers, agents or employees. These interpretations are also subject to our general terms and conditions set out in our current Price Schedule.

Comments

THANK YOU FOR USING "NABORS" HAYS, KANSAS (785) 628-6395
DIRECTIONS
CHEYENNE WELLS, CO., 3N. ON HWY 385 TO "RD. U", 1E. TO "RD. 45", 1/2N., W. INTO

Database File:

25880pe.db

Dataset Pathname:

pass8.3

Presentation Format:

micro

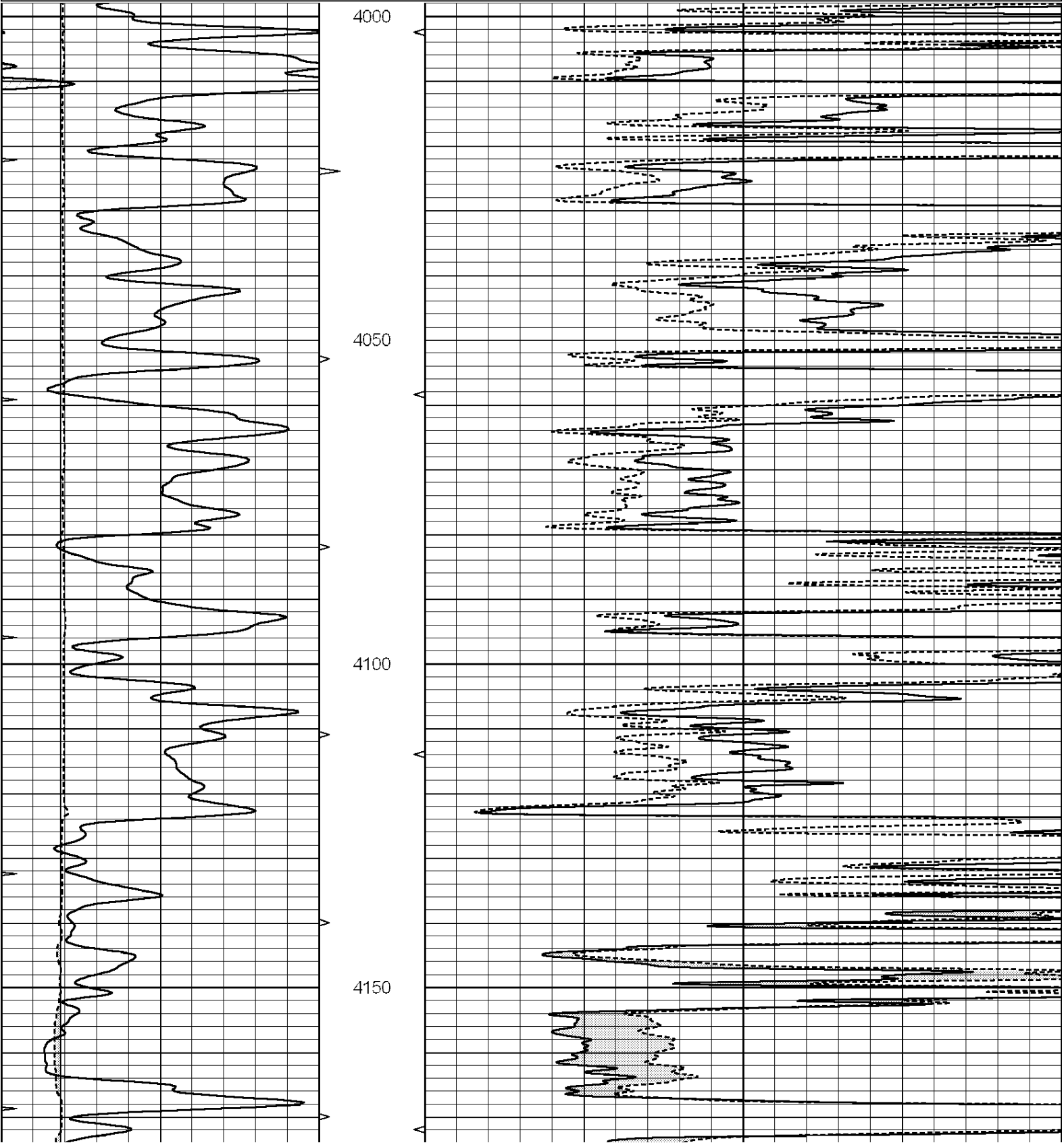
Dataset Creation:

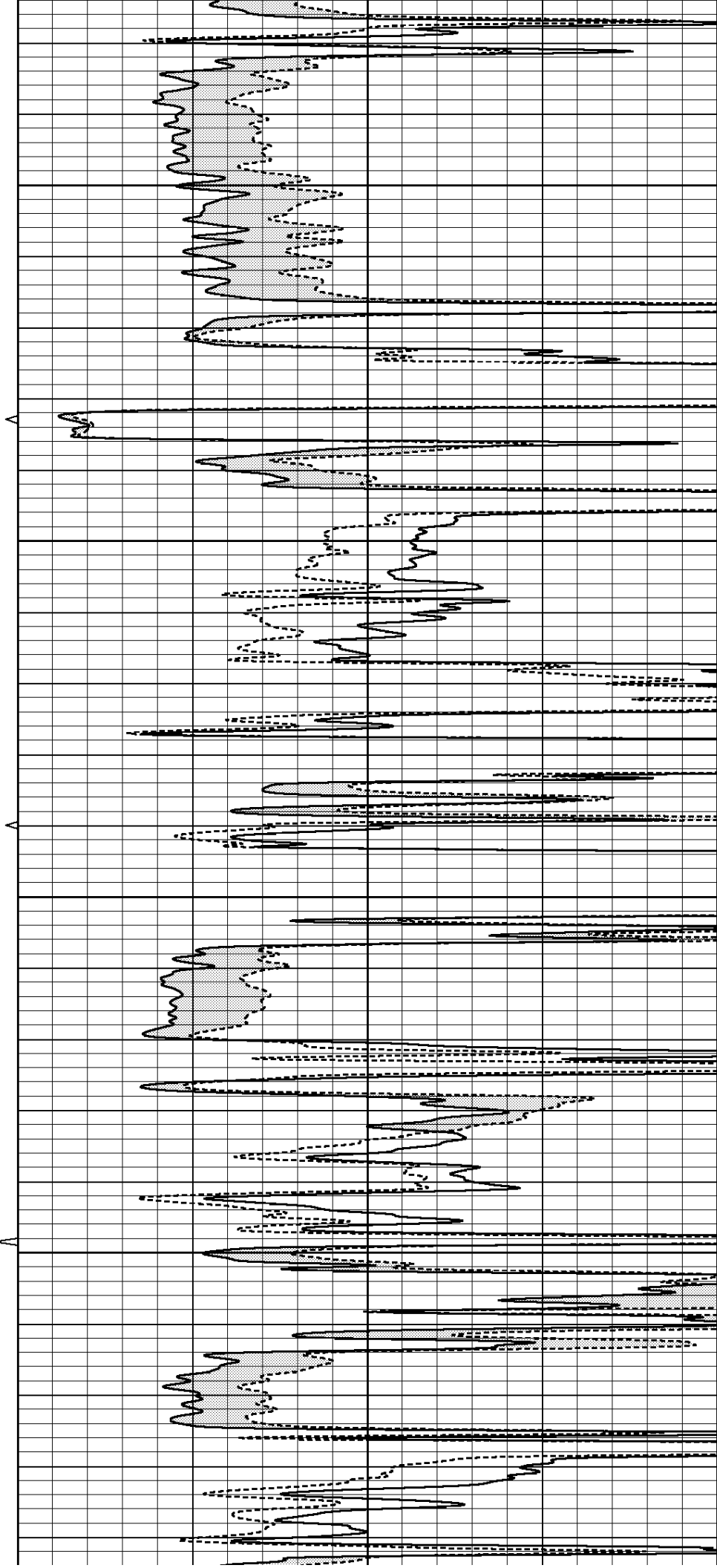
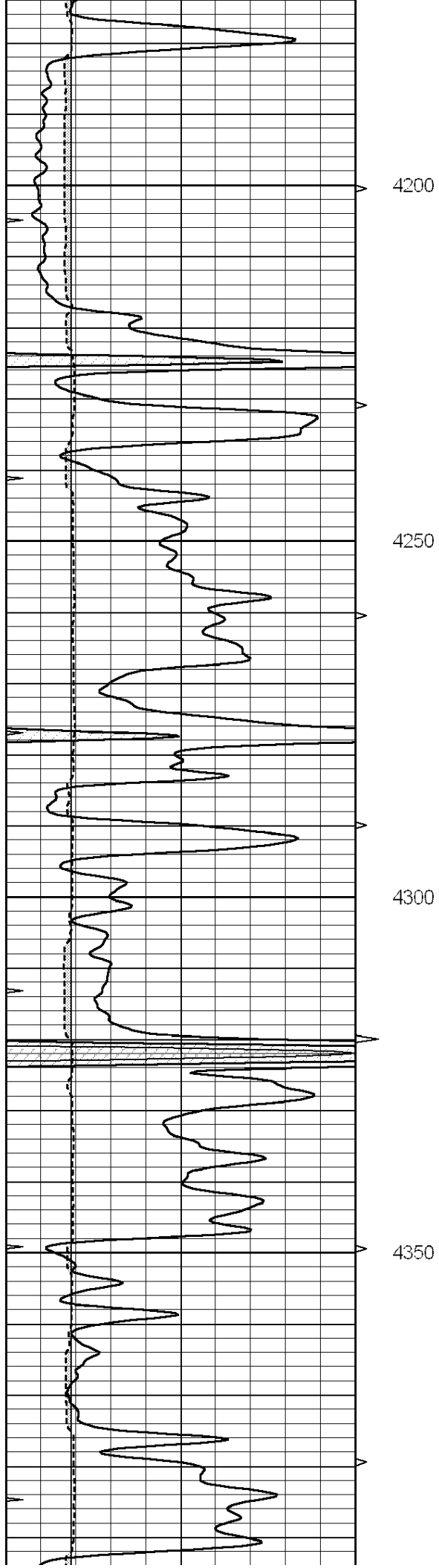
Tue Sep 16 04:13:29 2014 by Calc SOC 120430

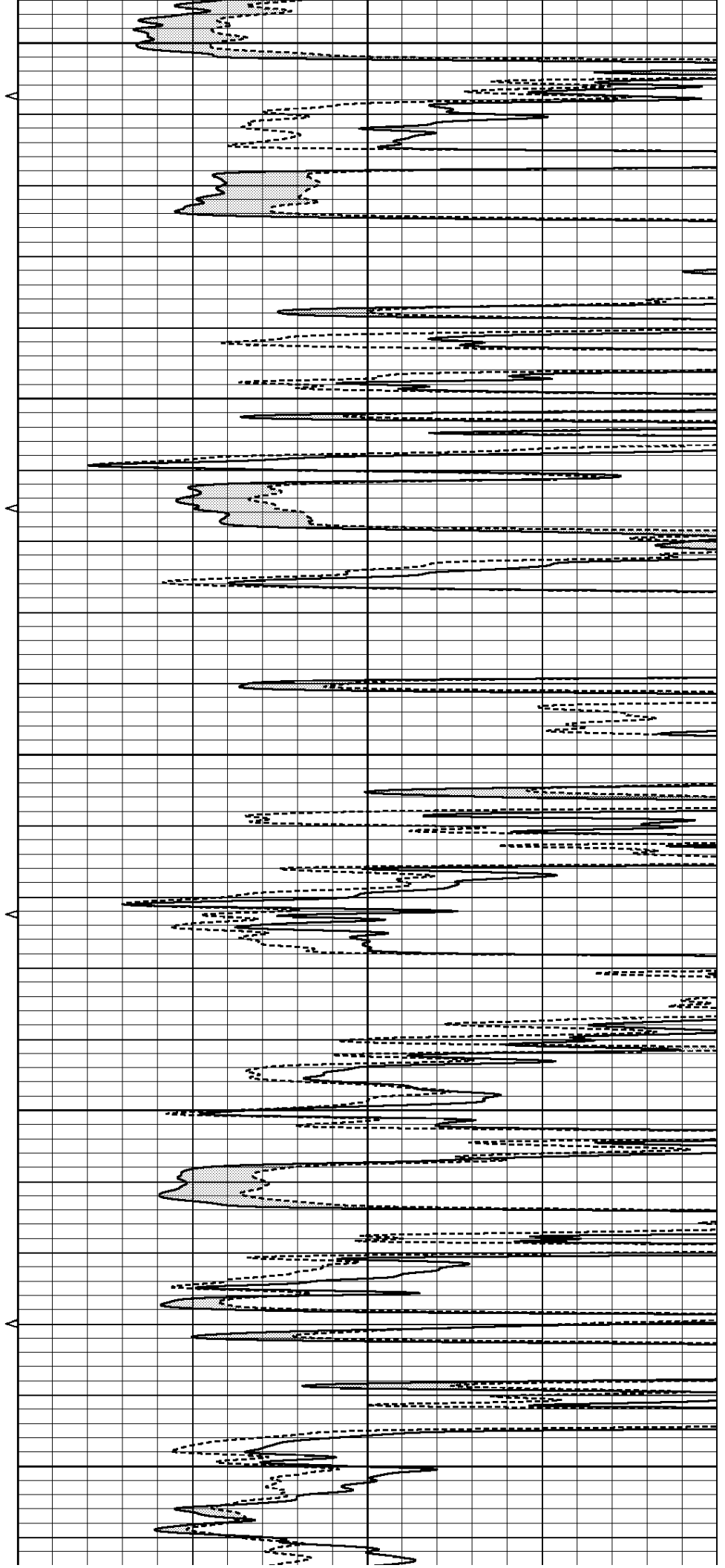
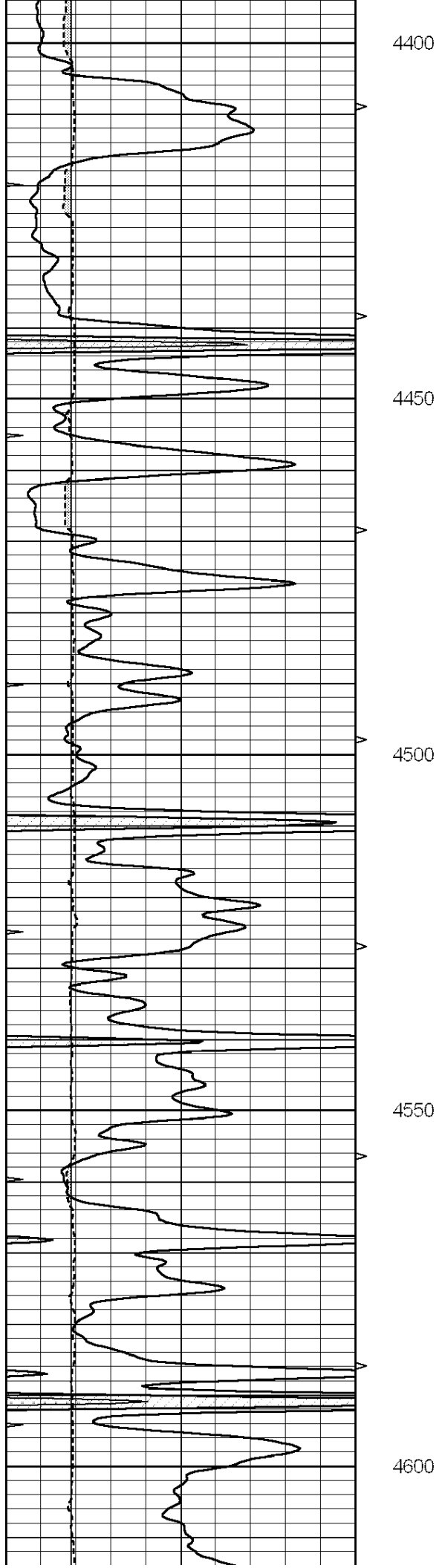
Charted by:

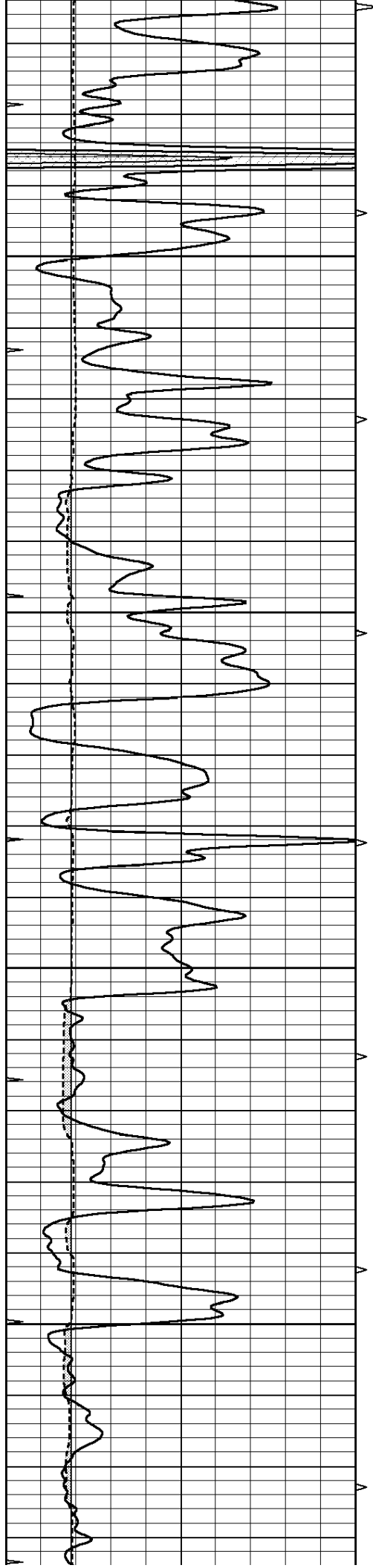
Depth in Feet scaled 1:240

0	GAMMA RAY (GAPI)	150	ABHV	0	MEL1.5 (Ohm-m)	40
6	CALIPER (in)	16	10 (ft3)	0 0	MEL 20 (Ohm-m)	40
0	MINMK	20	TBHV			
			0 (ft3)	10		







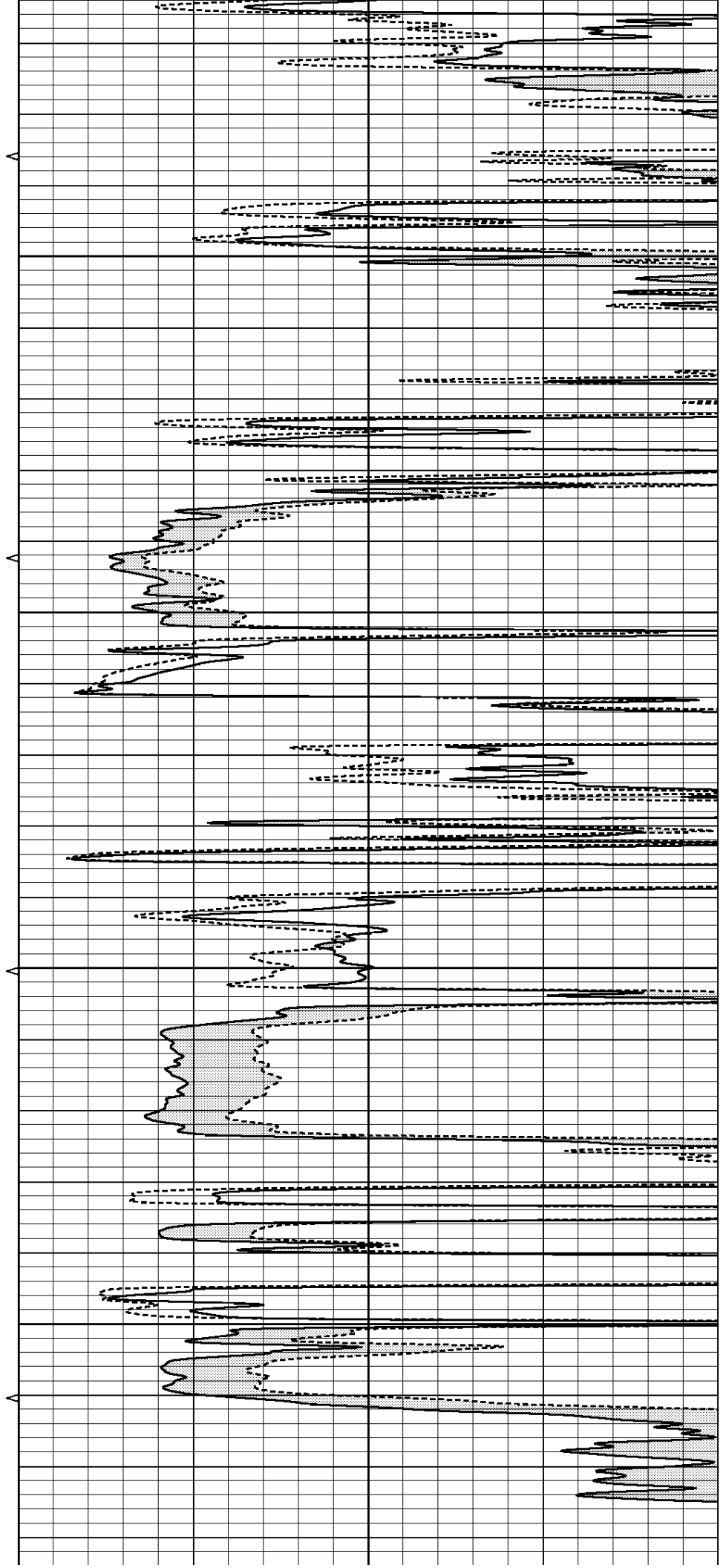


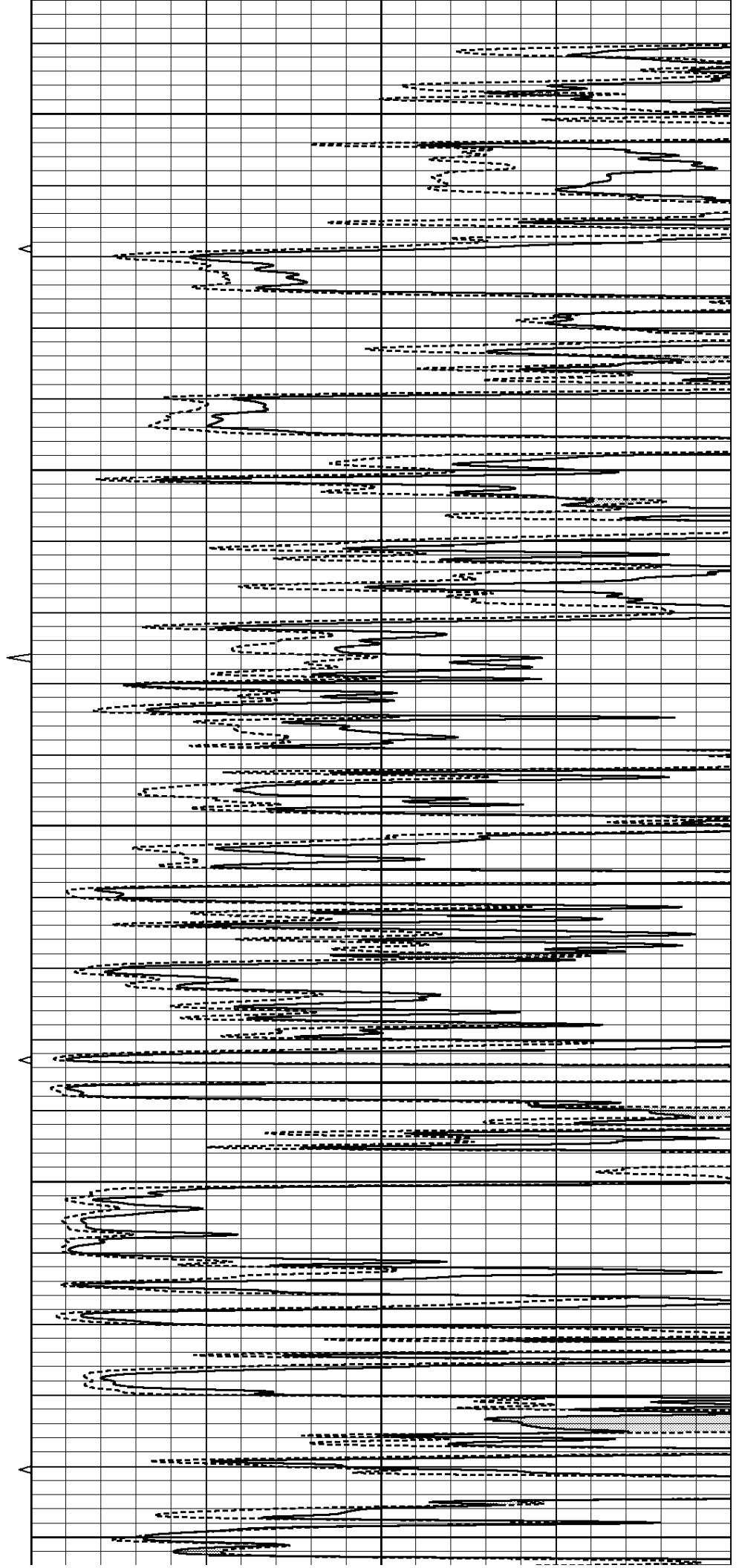
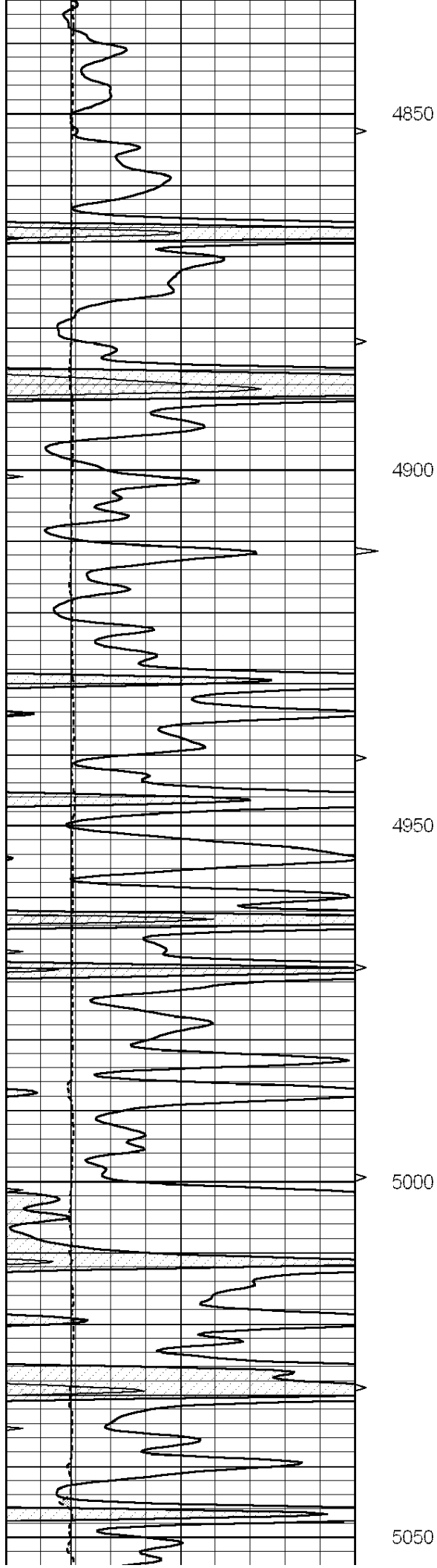
4650

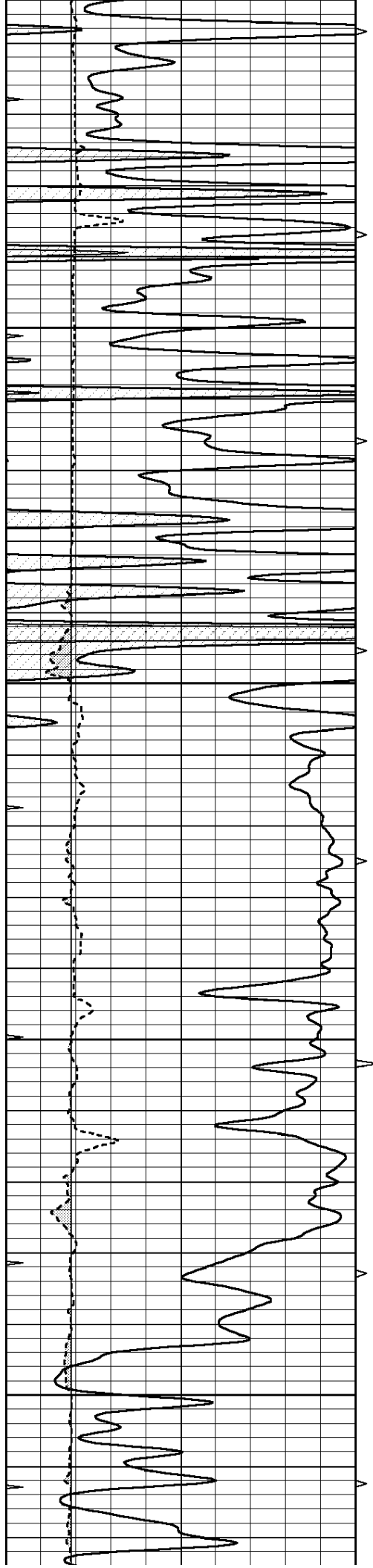
4700

4750

4800





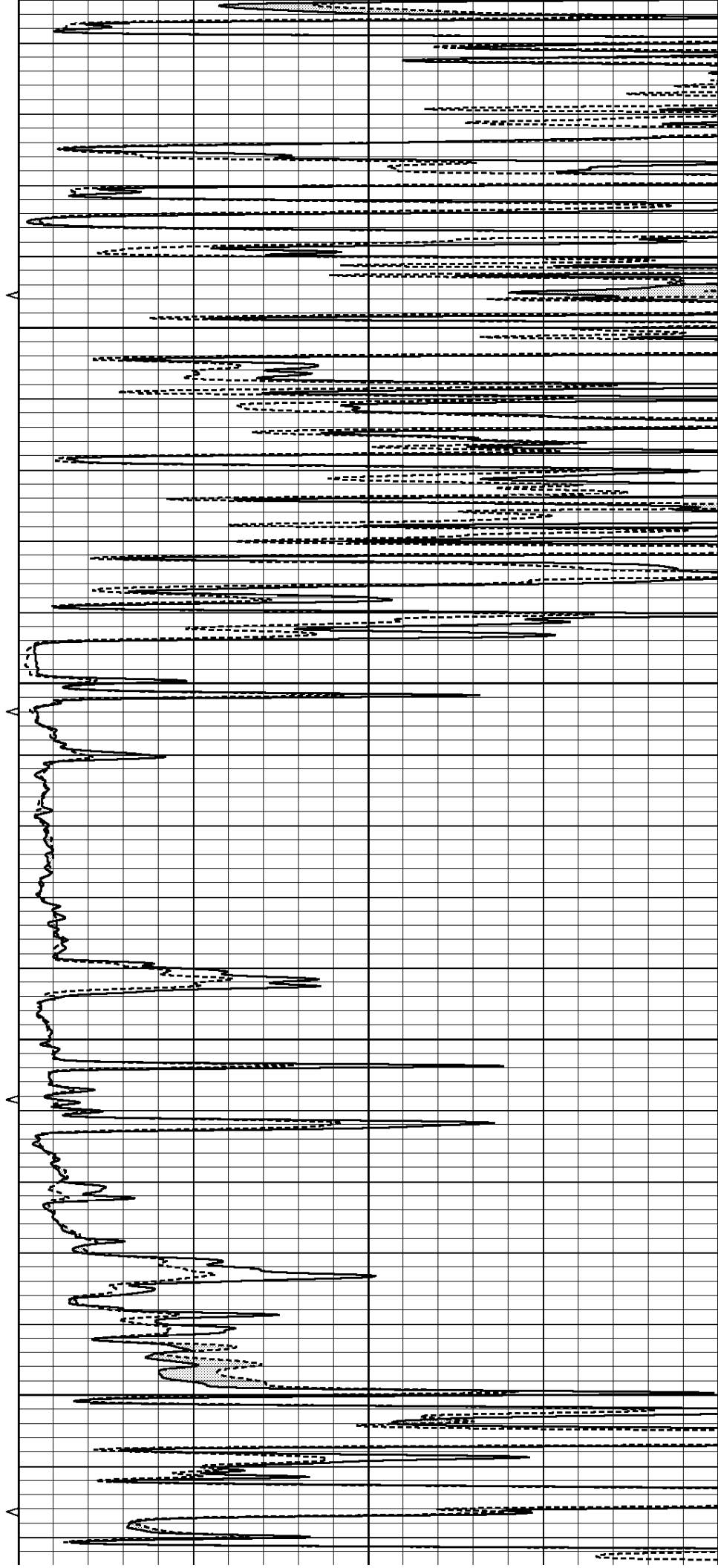


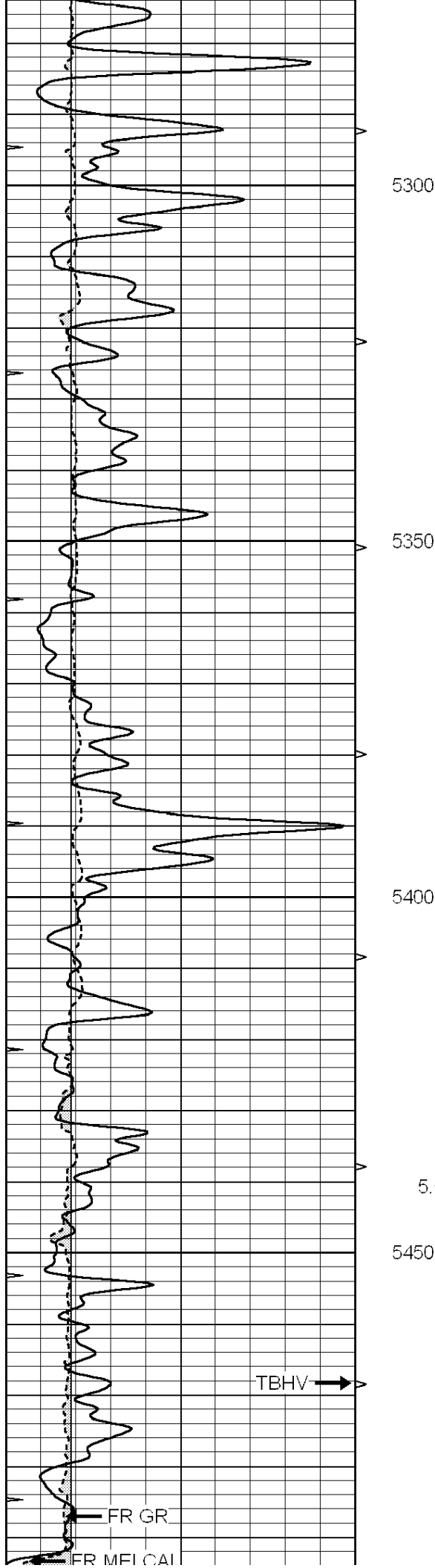
5100

5150

5200

5250





5300

5350

5400

5450

TBHV →

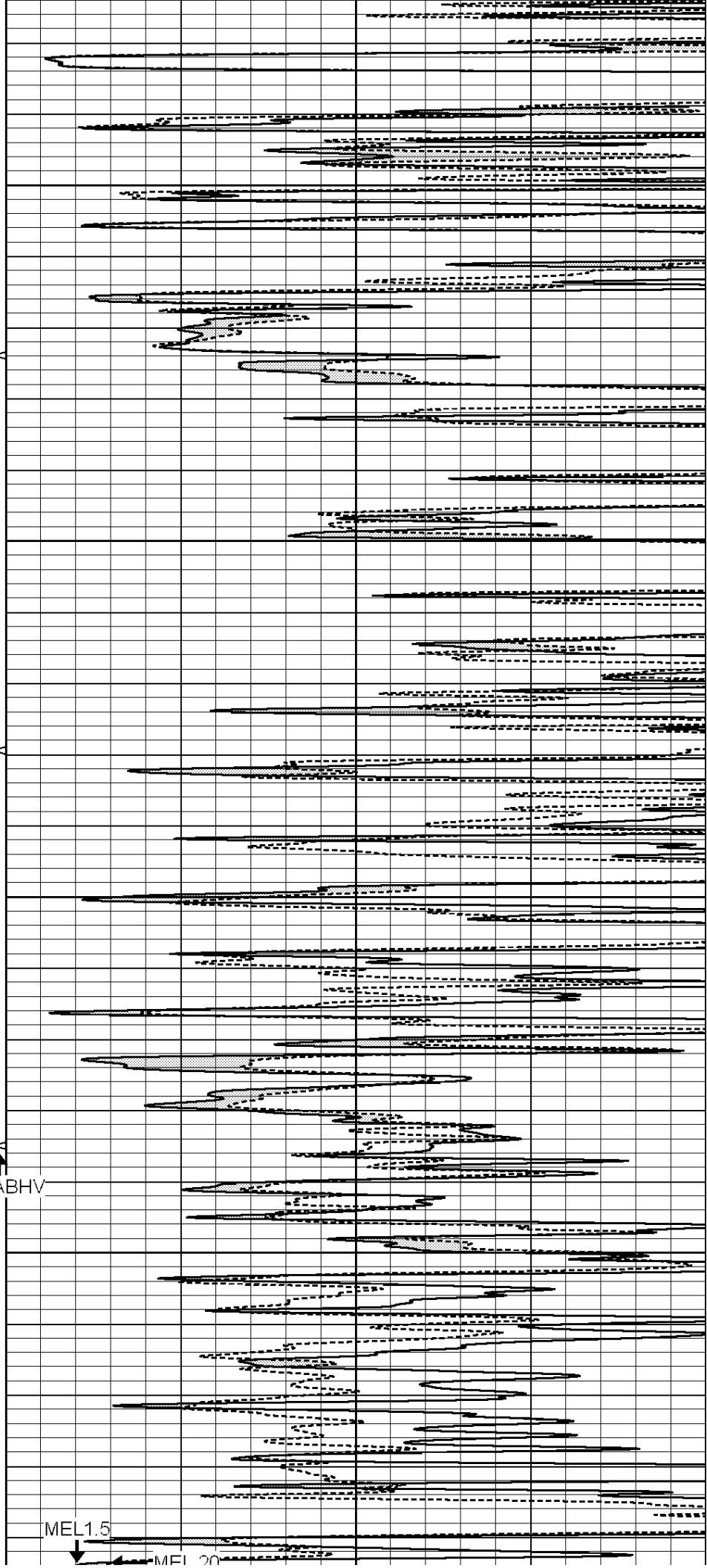
FR GR

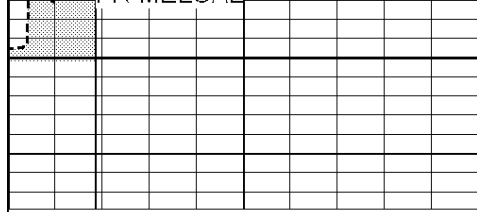
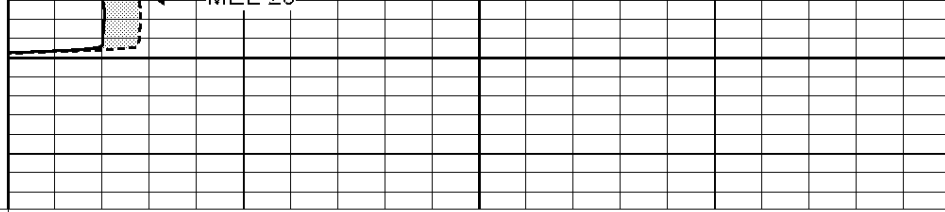
FR MEL CAL

5.5" ABHV

MEL 1.5

MEL 20



			5500			
			LTD 5510			
0	GAMMA RAY (GAPI)	150	ABHV	0	MEL1.5 (Ohm-m)	40
6	CALIPER (in)	16	10 (ft3)	0	MEL 20 (Ohm-m)	40
0	MINMK	20	TBHV			
			0 (ft3)	10		

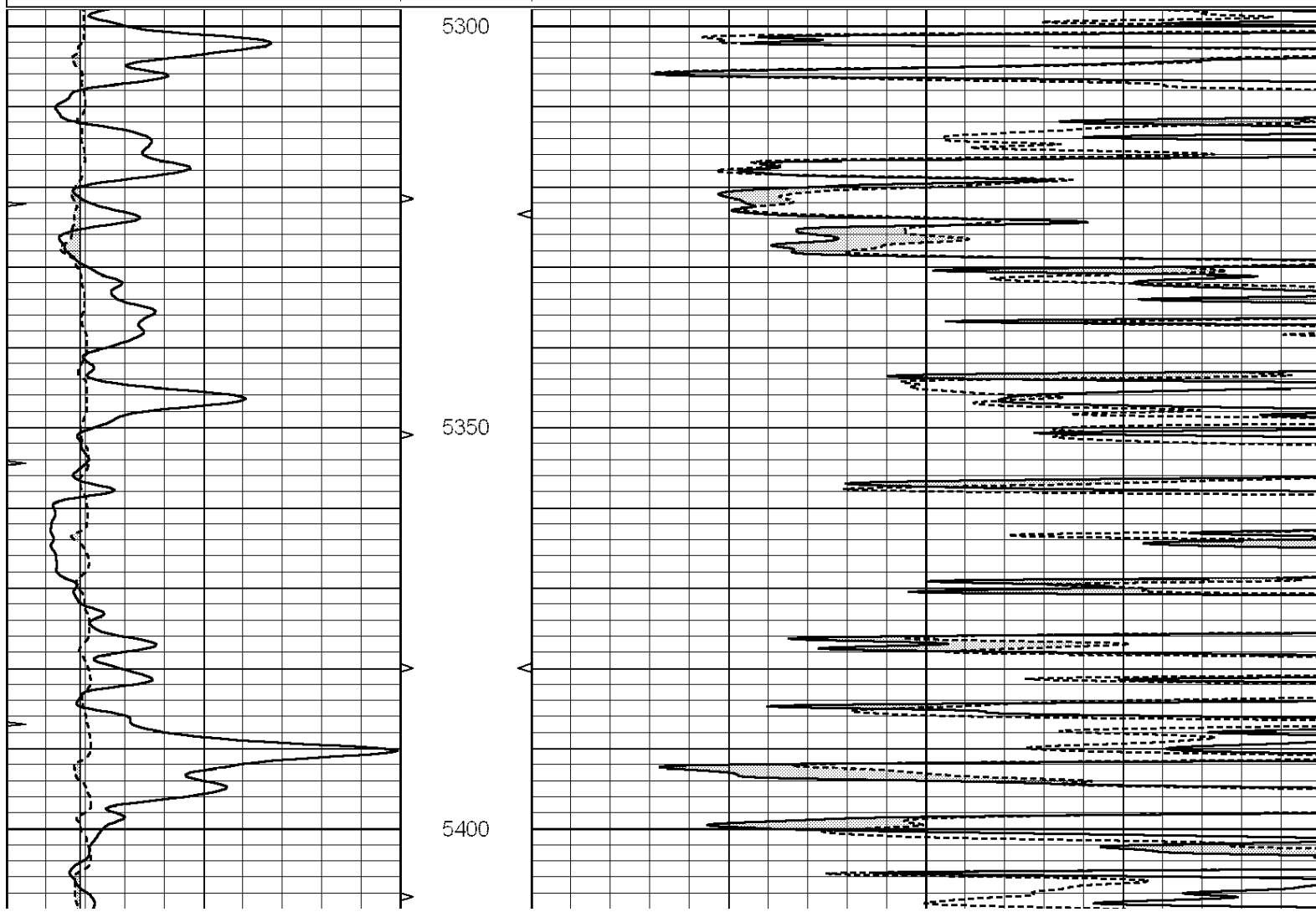


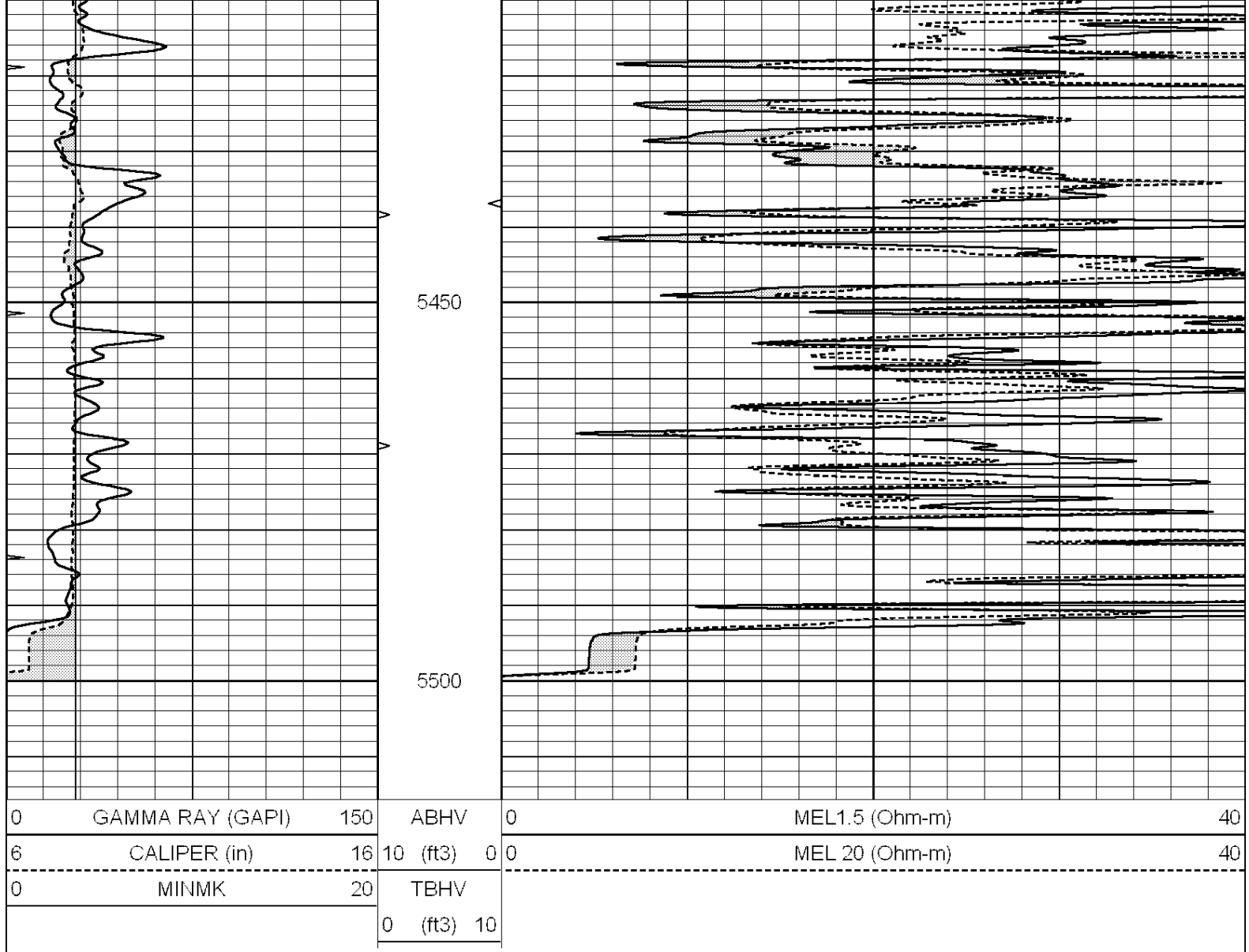
**COMPLETION
& PRODUCTION
SERVICES CO.**

REPEAT SECTION

Database File: 25880pe.db
Dataset Pathname: pass7.1
Presentation Format: micro
Dataset Creation: Tue Sep 16 03:21:29 2014 by Calc SOC 120430
Charted by: Depth in Feet scaled 1:240

0	GAMMA RAY (GAPI)	150	ABHV	0	MEL1.5 (Ohm-m)	40
6	CALIPER (in)	16	10 (ft3)	0	MEL 20 (Ohm-m)	40
0	MINMK	20	TBHV			
			0 (ft3)	10		





Calibration Report

Database File: 25880pe.db
Dataset Pathname: pass8.3
Dataset Creation: Tue Sep 16 04:13:29 2014 by Calc SOC 120430

MICRO Calibration Report

Serial Number: 070911
Tool Model: ProbeN
Performed: Wed Sep 03 16:51:01 2014

Caliper Calibration: Gain=3.567 Offset=3.045
References Low Cal High Cal
Readings 7.900 15.000
1.361 3.352

1.5" Calibration: Gain=35.000 Offset=-2.000
References Low Cal High Cal
Readings 0.000 20.000
0.001 1.269

2" Calibration: Gain=48.000 Offset=-2.000
References Low Cal High Cal
Readings 0.000 20.000
0.002 1.101

Readings	0.002	1.101
----------	-------	-------

Gamma Ray Calibration Report

Serial Number:	070559	
Tool Model:	OPEN_GR	
Performed:	Tue Sep 16 03:04:11 2014	
Calibrator Value:	1.0	GAPI
Background Reading:	0.0	cps
Calibrator Reading:	1.0	cps
Sensitivity:	0.2200	GAPI/cps