

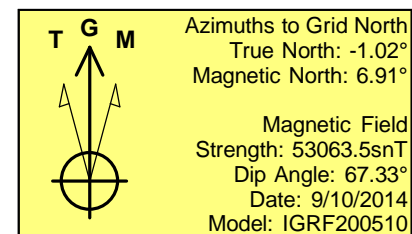
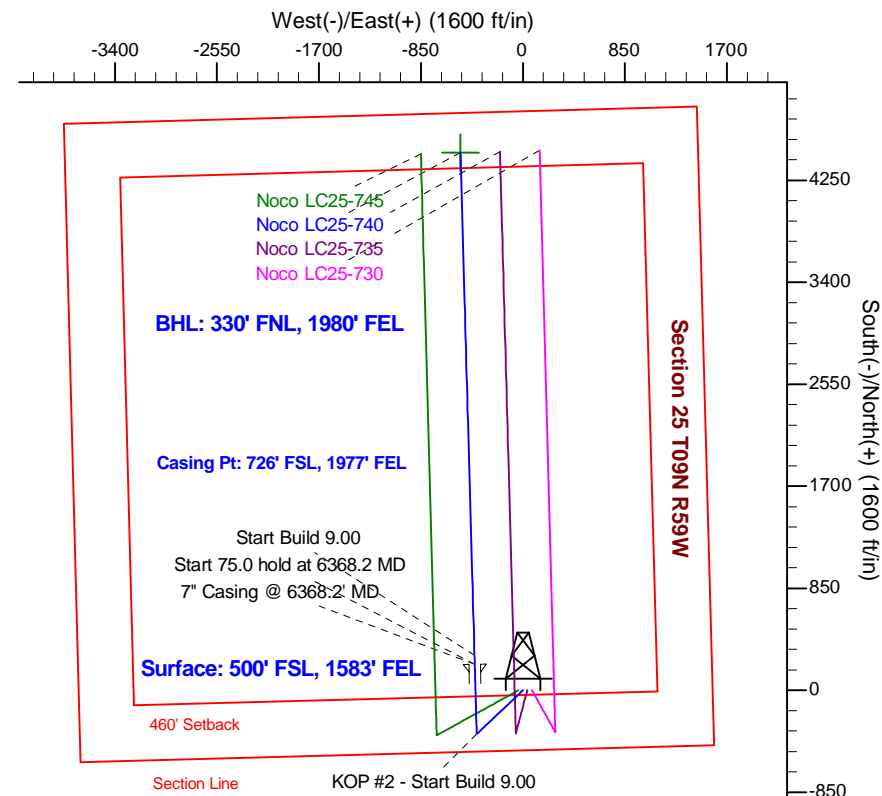
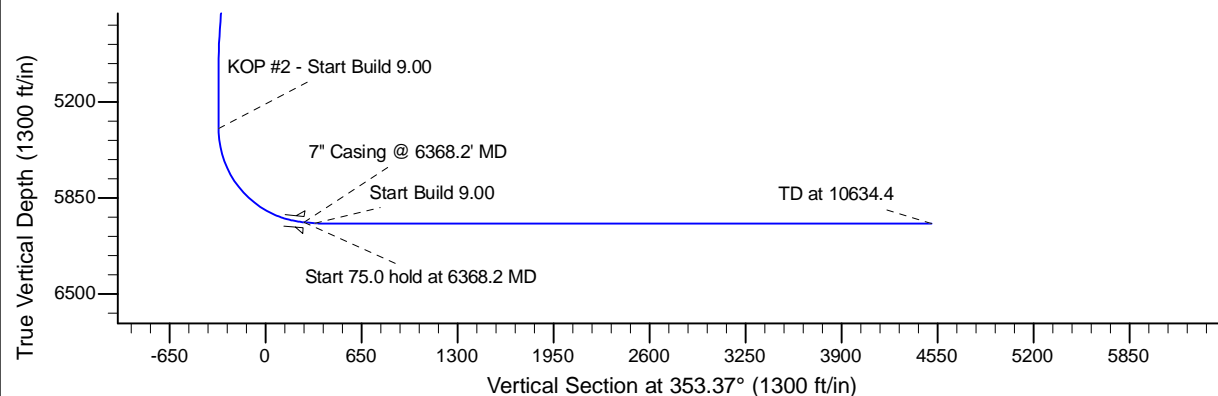
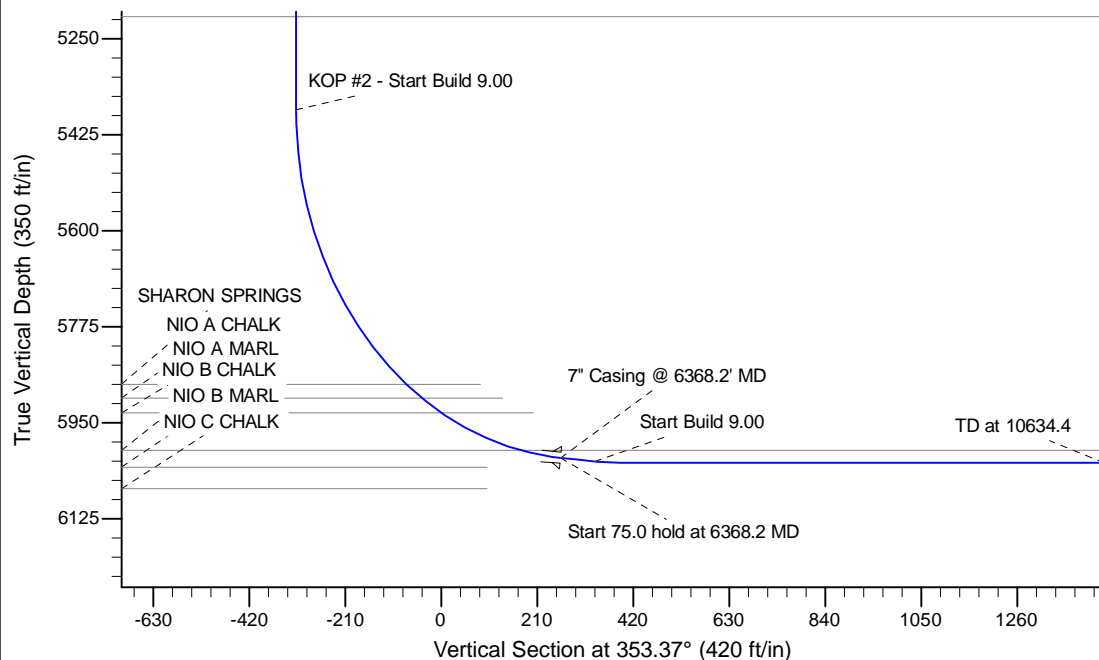
Project: Wattenberg Field
Site: LC (Sec.25-T09N-R59W) Weld County, CO
Well: Noco LC25-740
Wellbore: Original Drilling
Design: APD - Rev 0

Northern Region Drilling - Working

Geodetic System: US State Plane 1983
Datum: North American Datum 1983
Ellipsoid: GRS 1980
Zone: Colorado Northern Zone
System Datum: Mean Sea Level

SECTION DETAILS

Sec	MD	Inc	Azi	TVD	+N/-S	+E/-W	Dleg	TFace	VSec	Target
1	0.0	0.00	0.00	0.0	0.0	0.0	0.00	0.00	0.0	
2	1500.0	0.00	0.00	1500.0	0.0	0.0	0.00	0.00	0.0	
3	2001.0	10.02	226.53	1998.4	-30.1	-31.7	2.00	226.53	-26.2	
4	4548.0	10.02	226.53	4506.6	-334.9	-353.3	0.00	0.00	-291.9	
5	5048.9	0.00	0.00	5005.0	-365.0	-385.0	2.00	180.00	-318.1	
6	5423.8	0.00	0.00	5379.8	-365.0	-385.0	0.00	0.00	-318.1	
7	6368.2	85.00	358.40	6014.0	215.9	-401.2	9.00	358.40	260.8	
8	6443.2	85.00	358.40	6020.6	290.6	-403.3	0.00	0.00	335.2	
9	6498.8	90.00	358.40	6023.0	346.1	-404.9	9.00	0.00	390.5	
10	10634.4	90.00	358.40	6023.0	4480.0	-520.5	0.00	0.00	4510.2	Noco LC25-740 BHL 330'FNL, 1980'FEL



WELL DETAILS: Noco LC25-740

		Ground Level: 4901.0	
		Northing	Easting
0.0	0.0	1507515.95	3437382.62
		Latitude	Longitude
		40.715840	-103.922130

Plan: APD - Rev 0 (Noco LC25-740/Original Drilling)

Created By: Shailey Jewell Date: 13:22, September 10 2014

Checked: _____ Date: _____

Reviewed: _____ Date: _____

Approved: _____ Date: _____