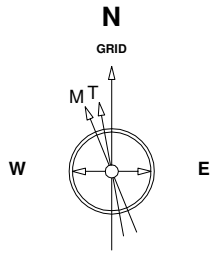


Great Western Operating Company, LLC

Location Colorado
Field Wattenberg
Installation Burr

Slot Slot #2
Well Burr FD 23-222HN
Wellbore Burr FD 23-222HN (PWB)

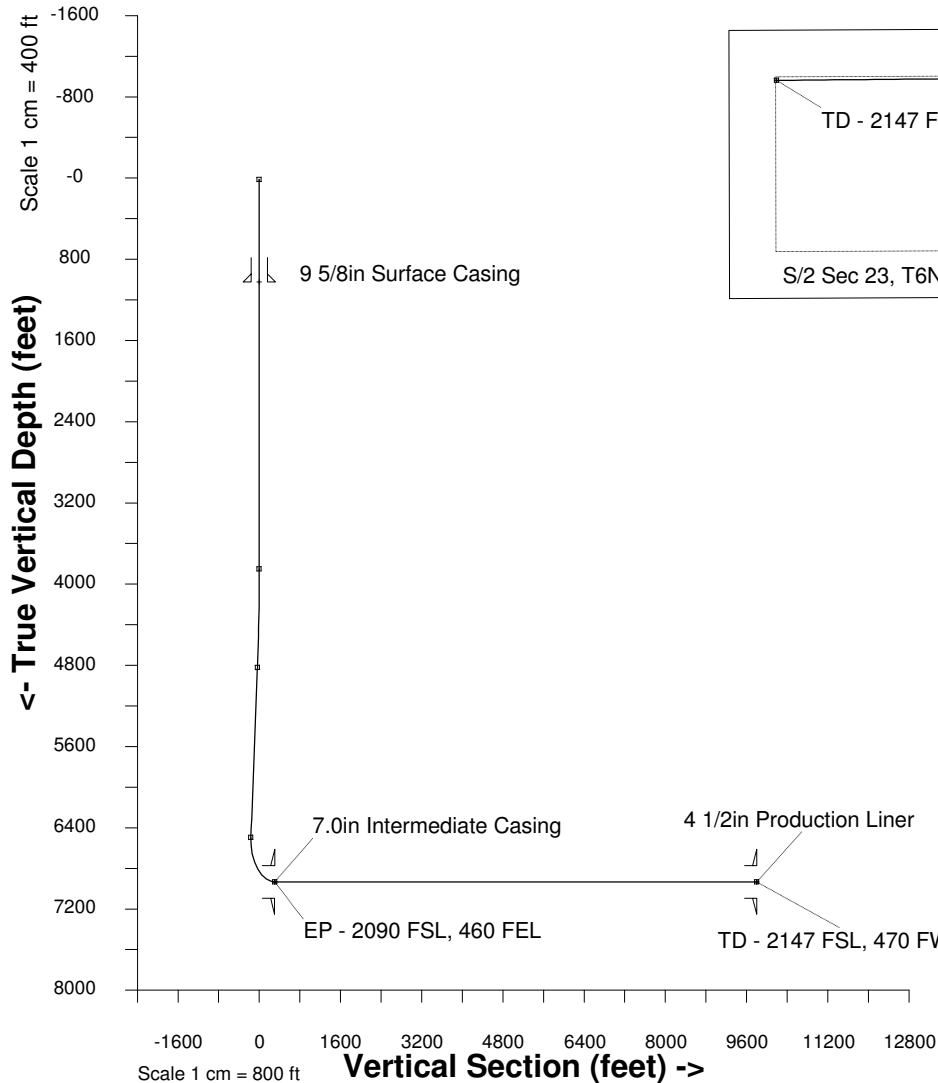


20-Aug-2014
IGRF Model [1900.0-2015.0] Dip: -29.73 deg Field: 32223.6 nT
Magnetic North is 4.46 deg West of True North
GRID North is 0.43 deg East of True North
To correct azimuth from True to GRID subtract 0.43 deg
To correct azimuth from Magnetic to GRID subtract 4.89 deg

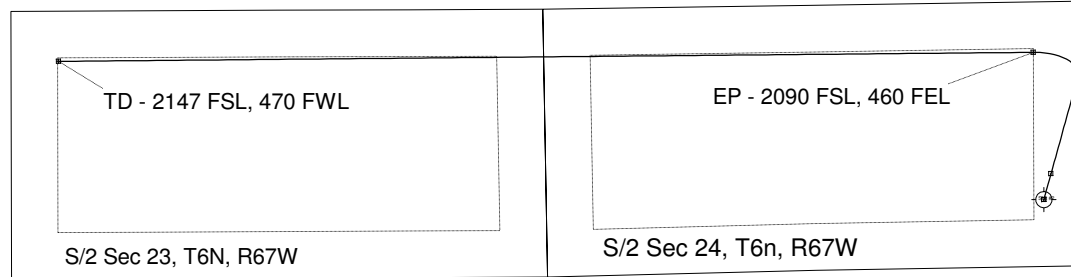
Scale 1 cm = 400 ft

East (feet) ->

-12000 -11200 -10400 -9600 -8800 -8000 -7200 -6400 -5600 -4800 -4000 -3200 -2400 -1600 -800 0 800 1600



Scale 1 cm = 800 ft
Vertical Section (feet) ->
Azimuth 277.99 with reference 0.00 N, 0.00 E from Slot #2



<- North(feet)

Scale 1 cm = 400 ft

WELL PROFILE DATA

Point	MD	Inc	Azi	TVD	North	East	deg/100ft	V. Sect
Tie on	16.20	0.00	0.00	16.20	0.00	0.00	0.00	0.00
KOP	3850.00	0.00	0.00	3850.00	0.00	0.00	0.00	0.00
End of Build	4867.73	30.53	15.52	4820.25	255.15	70.88	3.00	-34.73
End of Hold	6812.88	30.53	15.52	6495.69	1207.27	335.37	0.00	-164.32
Target EP - 2090 FSL	7567.33	90.00	269.47	6933.00	1451.07	-103.28	13.00	303.96
T.D. & Target TD - 2147	17167.91	90.00	269.47	6933.00	1361.90	-9703.44	0.00	9798.55

Created by admin
Date plotted 21-Aug-2014
Plot reference is Burr FD 23-222HN (PWB).
Ref wellpath is Burr FD 23-222HN (PWP#1).
Coordinates are in feet reference Slot #2.
True Vertical Depths are reference Rig Datum.
Measured Depths are reference Rig Datum.
Rig Datum: Planned Datum #1
Rig Datum to Mean Sea Level: 4759.00 ft.
Plot North is aligned to GRID North.