



**Scale 1:200 Imperial
Measured Depth Log**

Well Name: Barefoot 34C-25HZ
Location: Weld County, CO.
License Number: 05123392320000
Spud Date: 8/14/14
Surface Coordinates: 1027'FSL & 853'FEL, SEC.25, T3N-R68W
Region: DJ Basin
Drilling Completed: 8/18/14
Bottom Hole Coordinates: 815'FSL & 50'FWL, SEC.25, T3N-R68W
Ground Elevation (ft): 4864' **K.B. Elevation (ft):** 4880'
Logged Interval (ft): 7200' **To:** 12581' **Total Depth (ft):** 12581'
Formation: Codell
Type of Drilling Fluid: Water Base Mud

Printed by HORIZONTAL.LOG from WellSight Systems 1-800-447-1534 www.WellSight.com

OPERATOR

Company: Anadarko Petroleum Corporation
Address: Granite Tower
1099 18th St., Suite 1800
Denver, CO 80202

GEOLOGIST

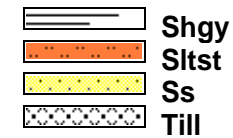
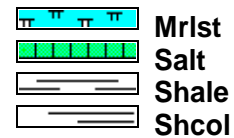
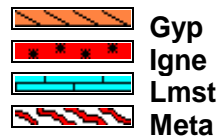
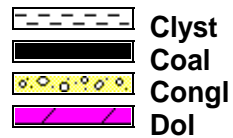
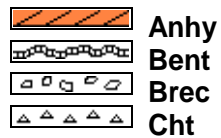
Name: Scott Crozier / Aaron Wiggins
Company: Great Divide Consulting, Inc.
Address: P.O. Box 630263
Highlands Ranch, CO 80163

Cores

DSTs

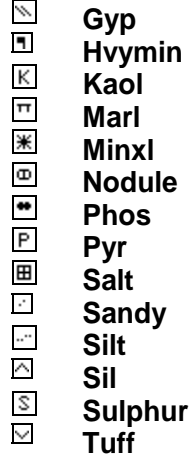
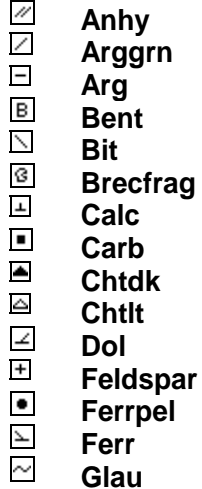
Comments

ROCK TYPES

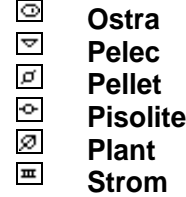
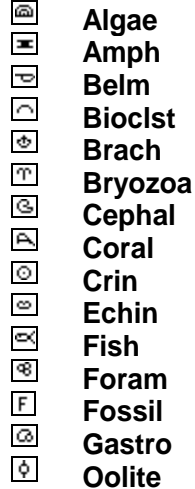


ACCESSORIES

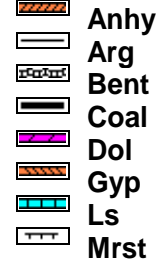
MINERAL



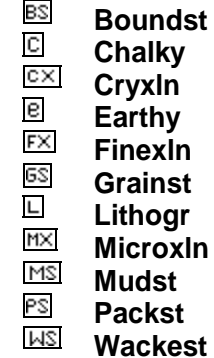
FOSSIL









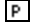
STRINGER



TEXTURE




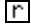


POROSITY

 Earthy
 Fenest
 Fracture
 Inter
 Moldic
 Organic
 Pinpoint

**Vuggy****SORTING**

 Well
 Moderate
 Poor



OTHER SYMBOLS**ROUNDING**

 Rounded
 Subrnd
 Subang
 Angular


OIL SHOW

 Even

**Spotted**

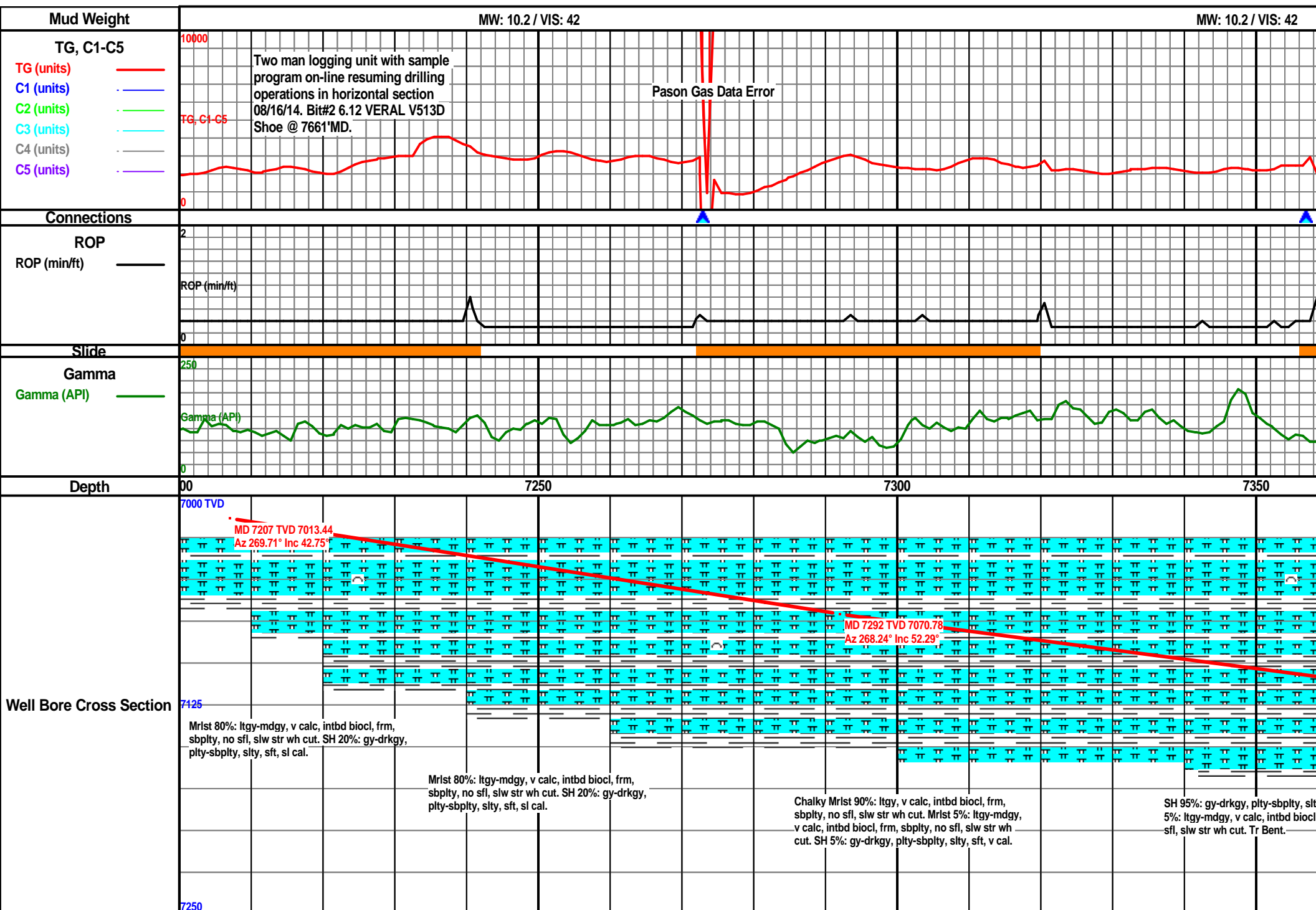
 Ques
 Dead

INTERVAL

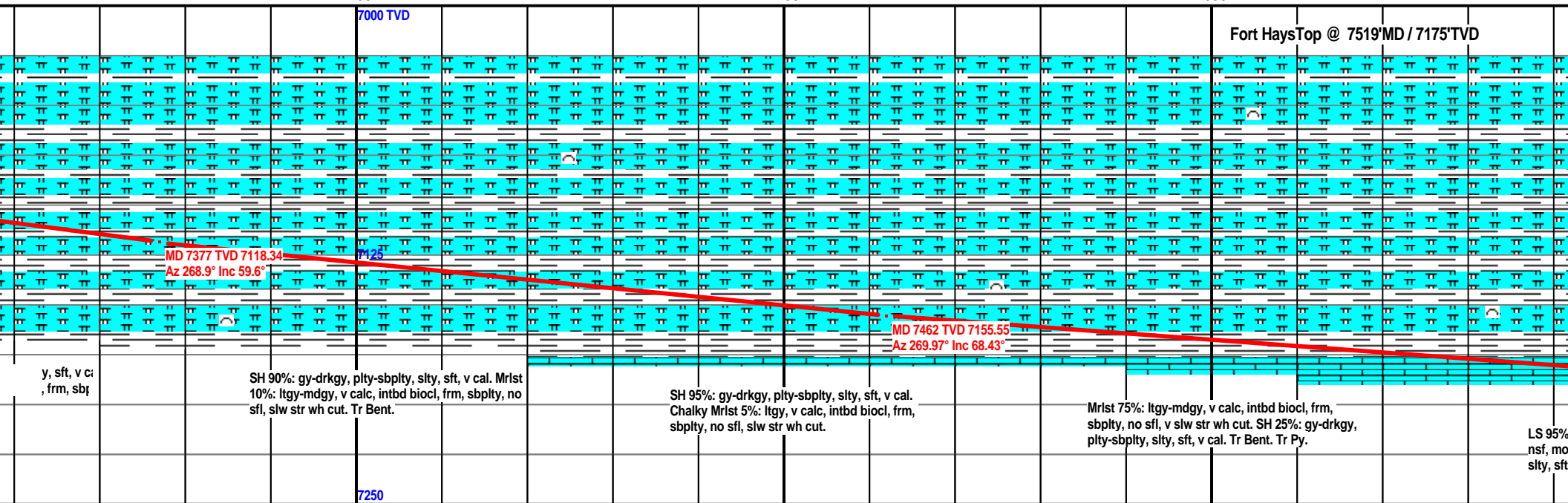
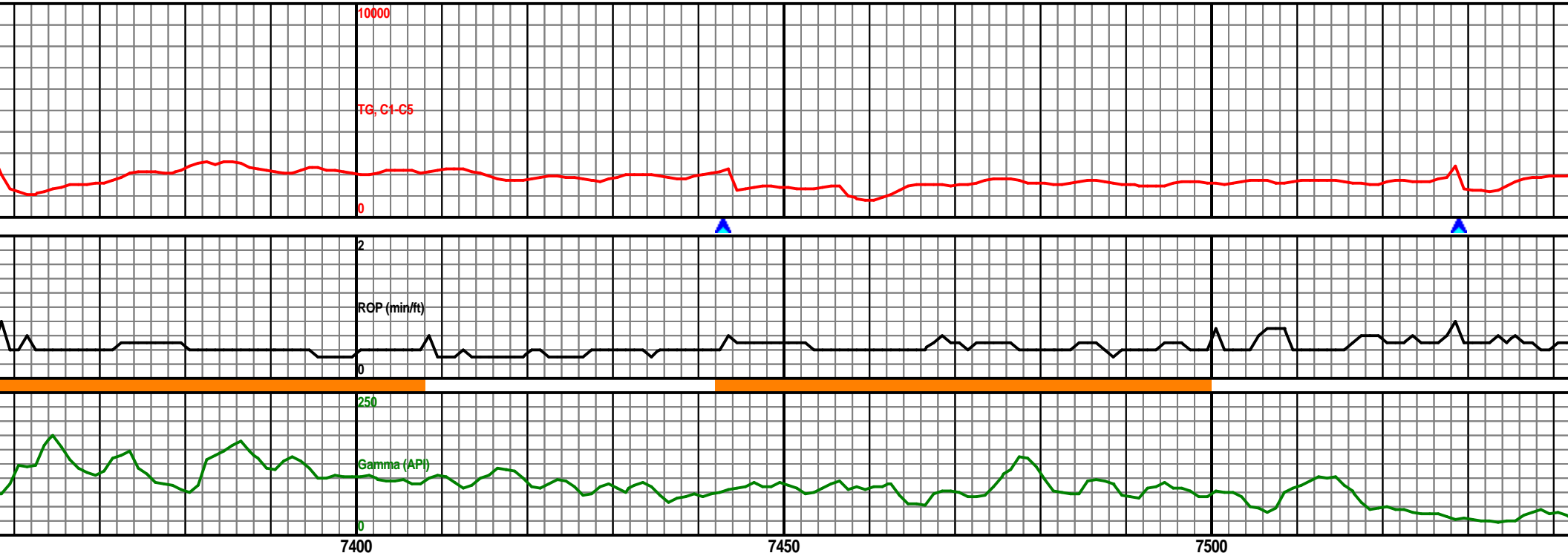
 Core
 Dst

EVENT

 Rft
 Connection

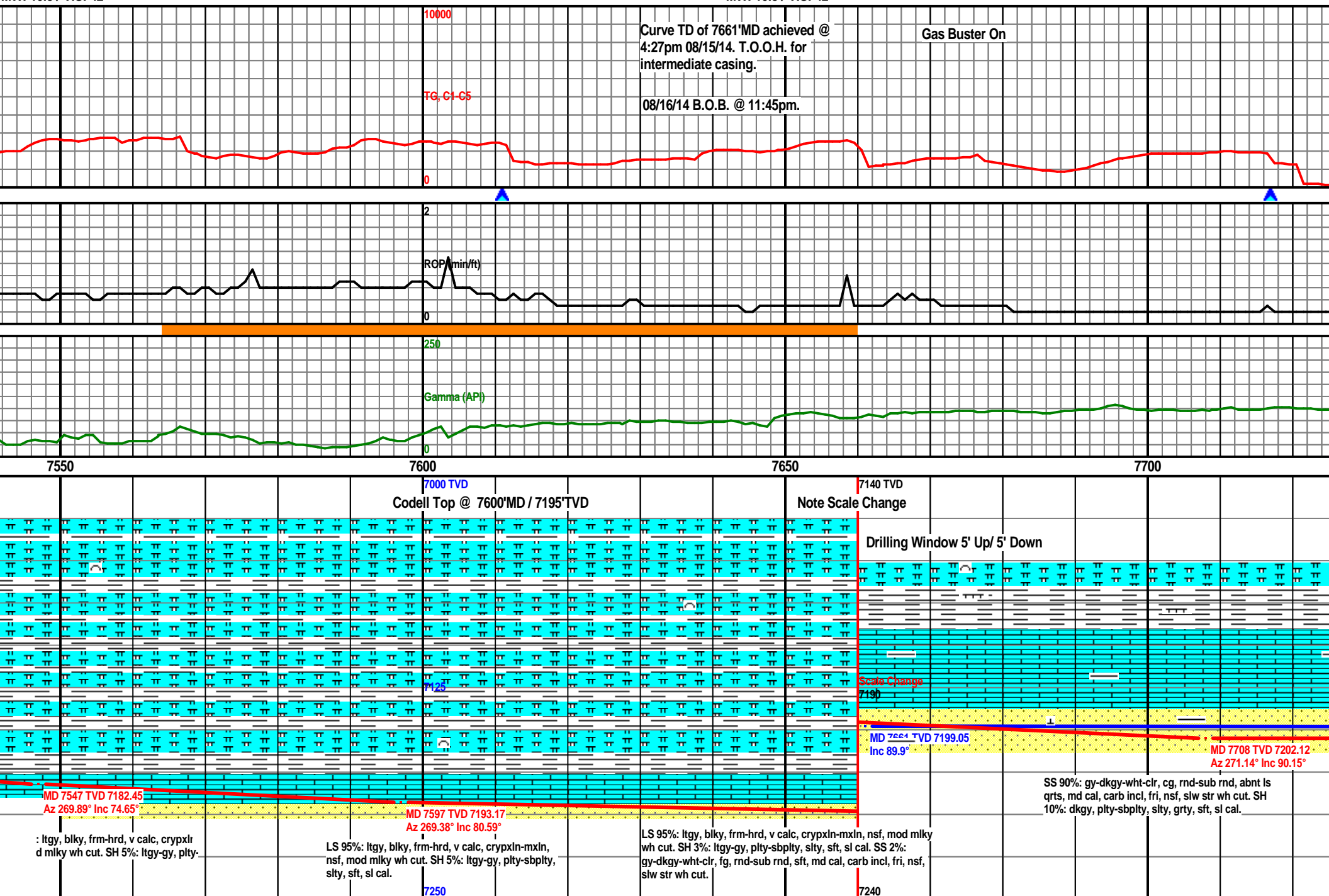


MW: 10.5 / VIS: 43



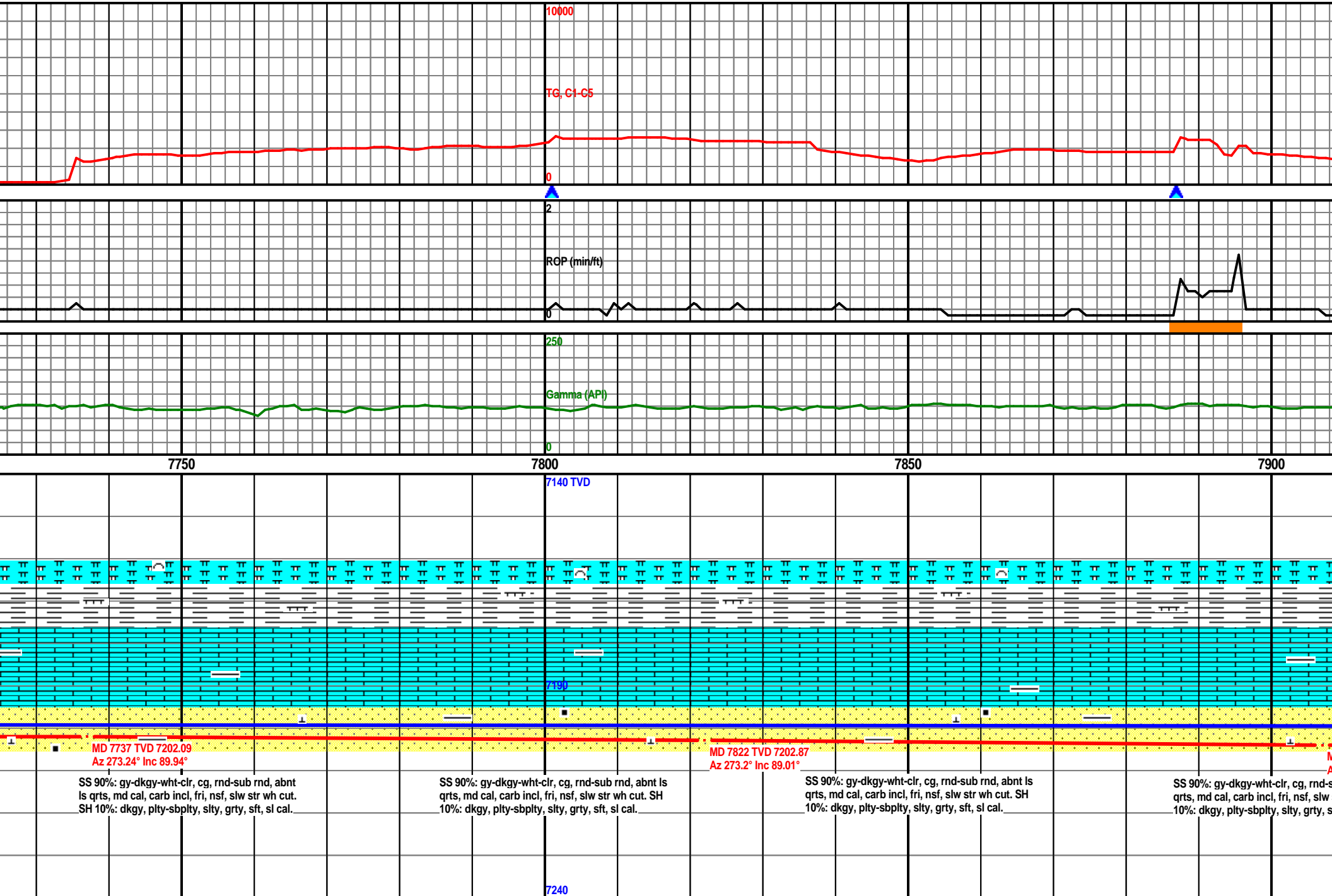
MW: 10.5 / VIS: 42

MW: 10.5 / VIS: 42



MW: 9.5 / VIS: 44

MW: 9.5 / VIS: 44



MW: 9.5 / VIS: 44

MW: 9.7 / VIS: 44

10000

TG, C1-C5

0

2

RGP (min/ft)

0

250

Gamma (API)

0

7950

8000

8050

7140 TVD

7190

D 7907 TVD
z 273.24° Inc
ub rnd,
str wh i
f

SS 90%: gy-dkgy-wht-clr, cg, rnd-sub rnd, abnt ls
qrts, md cal, carb incl, fri, nsf, slw str wh cut. SH
10%: dkgy, plty-sbpty, slty, grty, sft, sl cal.

MD 7992 TVD 7204.06
Az 272.9° Inc 90.43°

SS 90%: gy-dkgy-wht-clr, cg, rnd-sub rnd, abnt ls
qrts, md cal, carb incl, fri, nsf, slw str wh cut. SH
10%: dkgy, plty-sbpty, slty, grty, sft, sl cal.

7240

MD 8077 TVD 7203.56
Az 271.38° Inc 90.25°

SS 90%: gy-dkgy-wht-clr, cg, rnd-sub rnd, abnt ls
qrts, md cal, carb incl, fri, nsf, slw str wh cut. SH
10%: dkgy, plty-sbpty, slty, grty, sft, sl cal.

SS 90%: g
qrts, md c
10%: dkgy

MW: 9.7 / VIS: 44

MW: 9.6 / VIS: 44

10000

TG, C1-C5

0

2

RGP (min/ft)

0

250

Gamma (API)

0

8100

8150

8200

8250

7140 TVD

08/17/14 4:00am Depth @ 8228'MD

MD 8100 TVD 7199.82

Inc 89.9°

-dkgy-wht-clr, cg, rnd-sub rnd,
l, carb incl, fri, nsf, slw str wh
, plty-sbplty, slty, grty, sf

SS 90%: gy-dkgy-wht-clr, cg, rnd-sub rnd, abnt ls
qrts, md cal, carb incl, fri, nsf, slw str wh cut. SH
10%: dkgy, plty-sbplty, slty, grty, sft, sl cal.

MD 8162 TVD 7202.5
Az 270.48° Inc 91.17°

SS 90%: gy-dkgy-wht-clr, cg, rnd-sub rnd, abnt ls
qrts, md cal, carb incl, fri, nsf, slw str wh cut. SH
10%: dkgy, plty-sbplty, slty, grty, sft, sl cal.

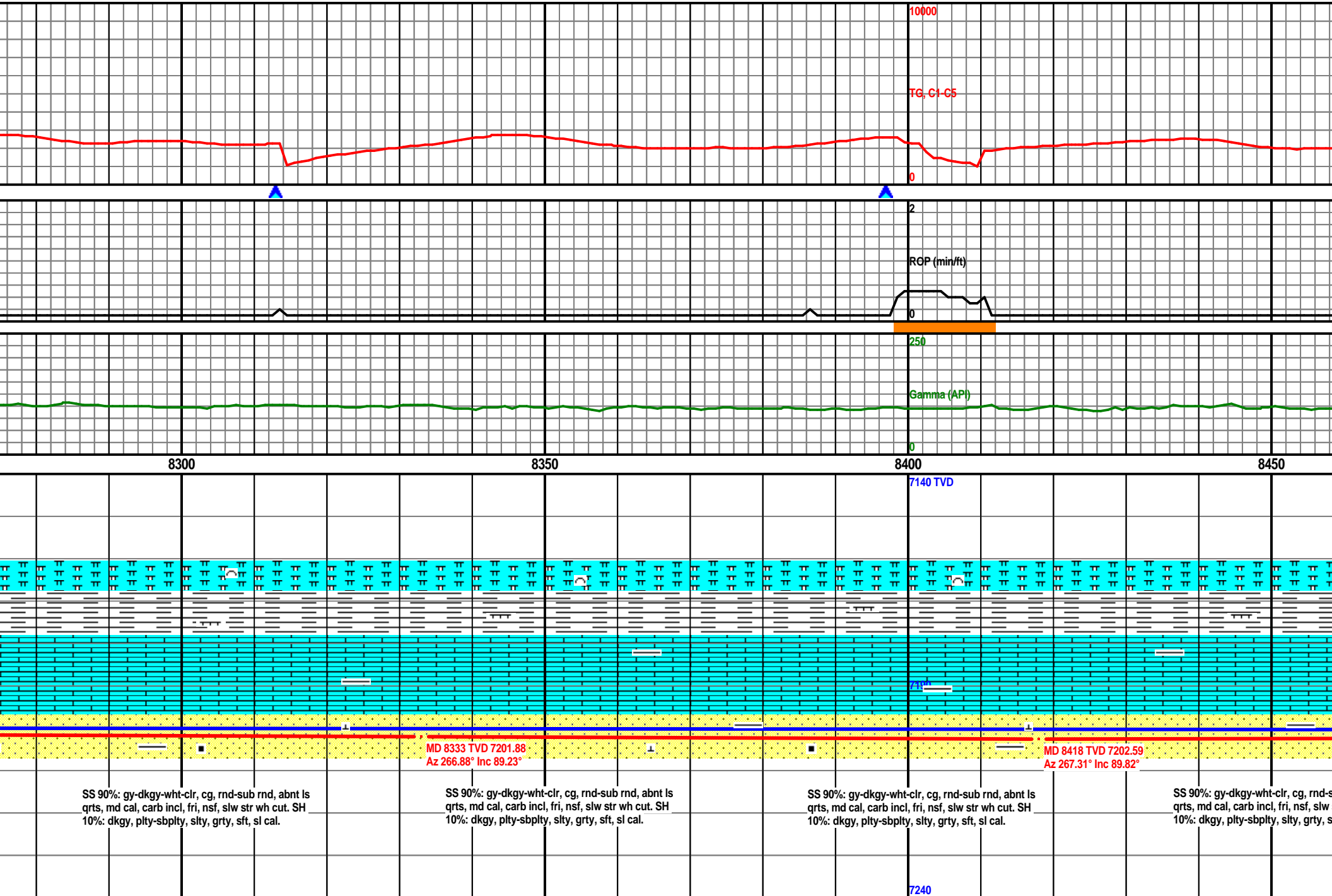
MD 8247 TVD 7201.47
Az 267.92° Inc 90.22°

SS 90%: gy-dkgy-wht-clr, cg, rnd-sub rnd, abnt ls
qrts, md cal, carb incl, fri, nsf, slw str wh cut. SH
10%: dkgy, plty-sbplty, slty, grty, sft, sl cal.

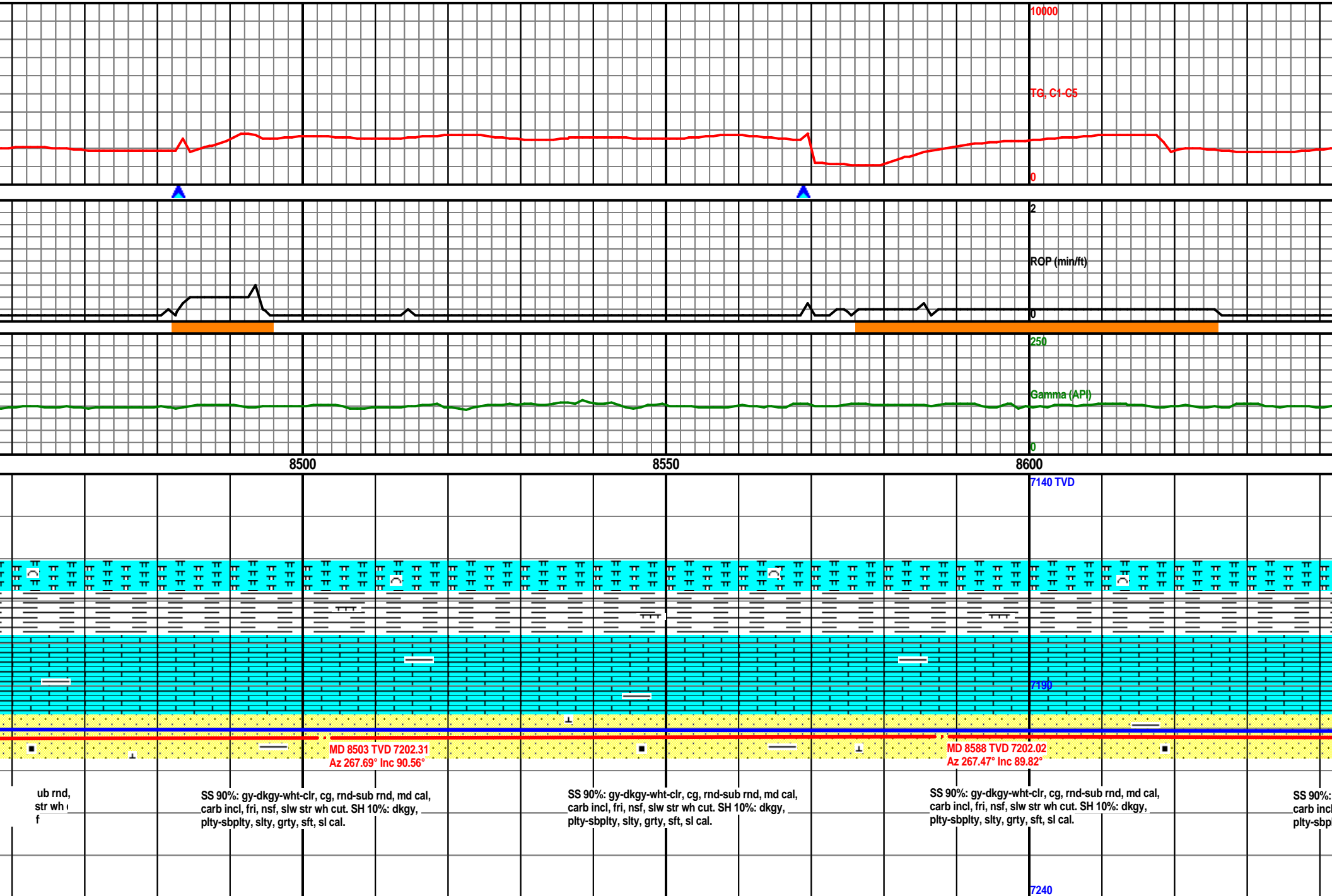
7240

MW: 9.6 / VIS: 44

MW: 9.8 / VIS: 45

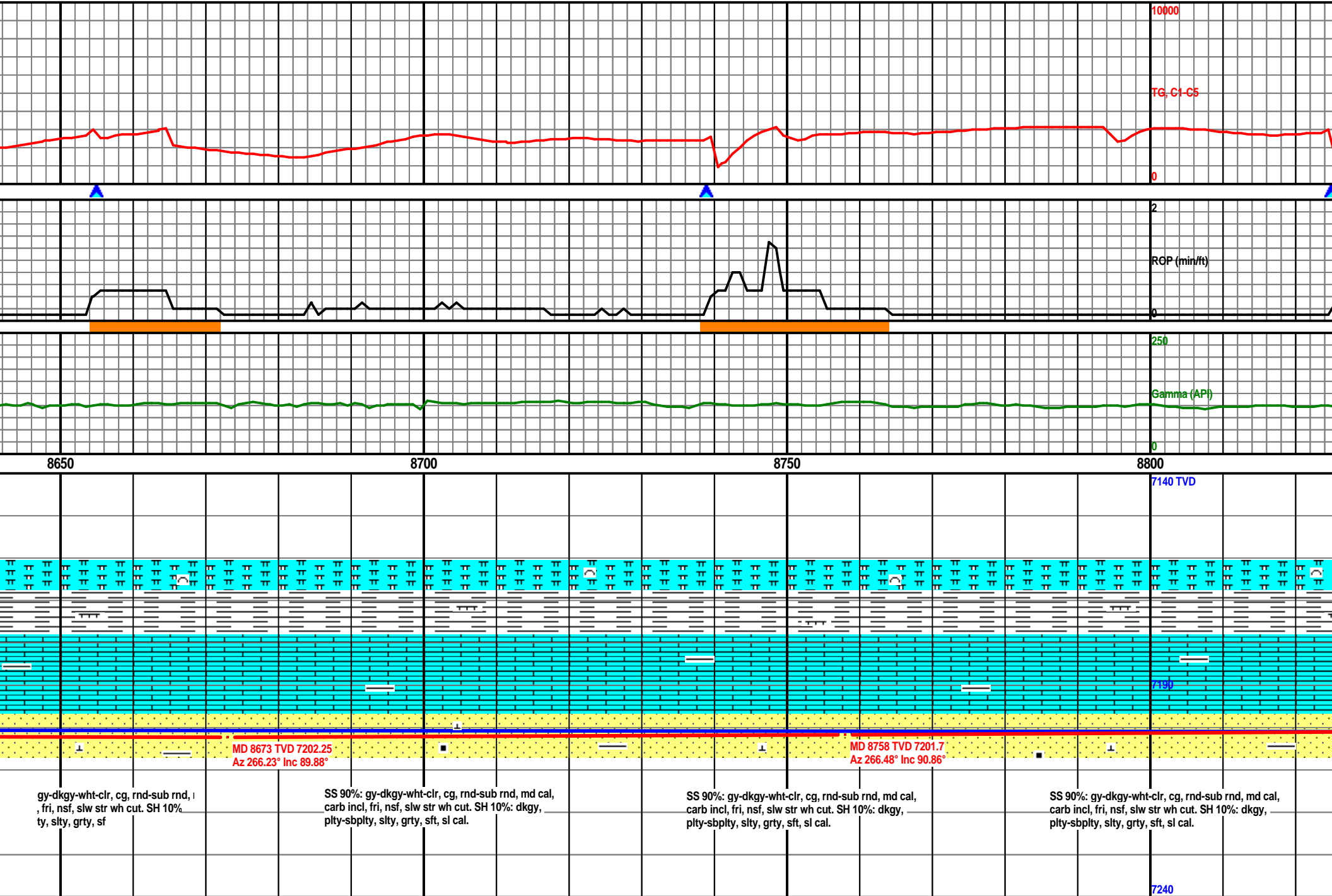


MW: 9.8 / VIS: 45



MW: 9.9 / VIS: 45

MW: 9.9 / VIS: 45



MW: 9.9 / VIS: 45

MW: 9.9 / VIS: 47

10000

TG, C1-C5

0

2

RGP (min/ft)

0

Gamma (API)

0

8850

8900

8950

9000

7140 TVD

7190

7240

MD 8843 TVD 7200.83
Az 266.47° Inc 90.31°

MD 8928 TVD 7200.76
Az 268.05° Inc 89.78°

SS 90%: gy-dkgy-wht-clr, cg, rnd-sub rnd, md cal,
carb incl, fri, nsf, slw str wh cut. SH 10%: dkgy,
plty-sbplty, slty, grty, sft, sl cal.

SS 90%: gy-dkgy-wht-clr, cg, rnd-sub rnd, md cal,
carb incl, fri, nsf, slw str wh cut. SH 10%: dkgy,
plty-sbplty, slty, grty, sft, sl cal.

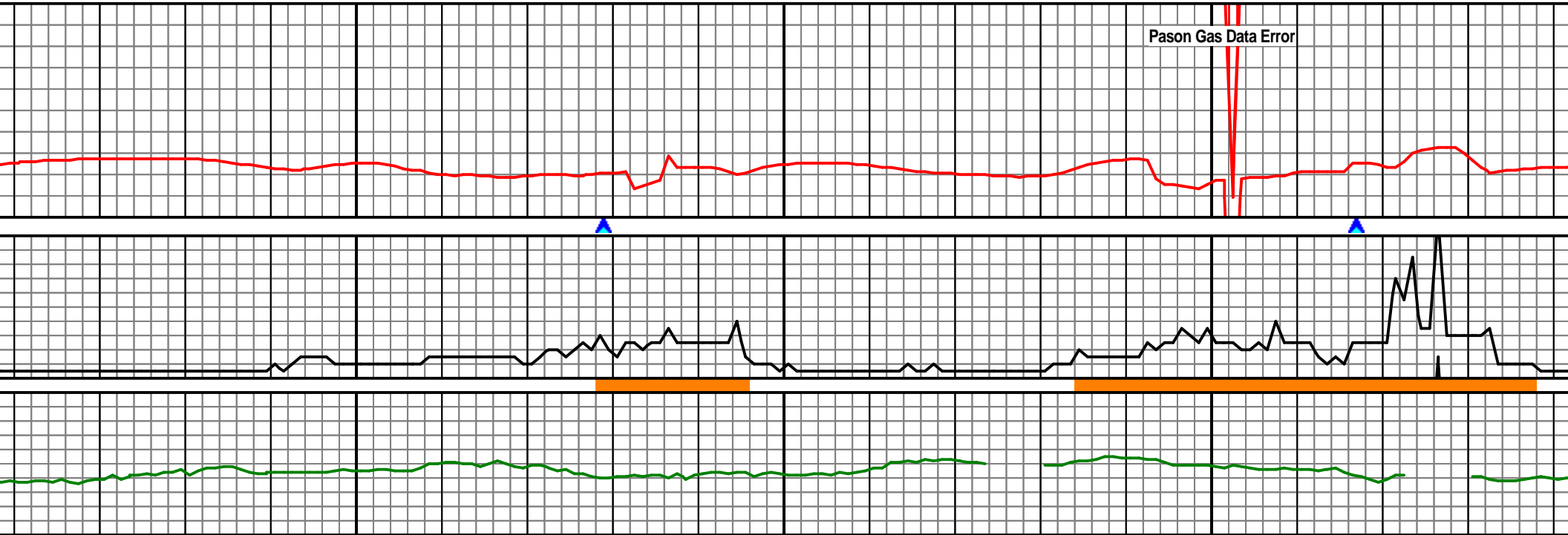
SS 90%: gy-dkgy-wht-clr, cg, rnd-sub rnd, md cal,
carb incl, fri, nsf, slw str wh cut. SH 10%: dkgy,
plty-sbplty, slty, grty, sft, sl cal.

SS 90%: gy-dkgy-wht-clr, cg, rnd-sub rnd, md cal,
carb incl, fri, nsf, slw str wh cut. SH 10%: dkgy,
plty-sbplty, slty, grty, sft, sl cal.

MW: 9.9 / VIS: 47

MW: 9.9 / VIS: 47

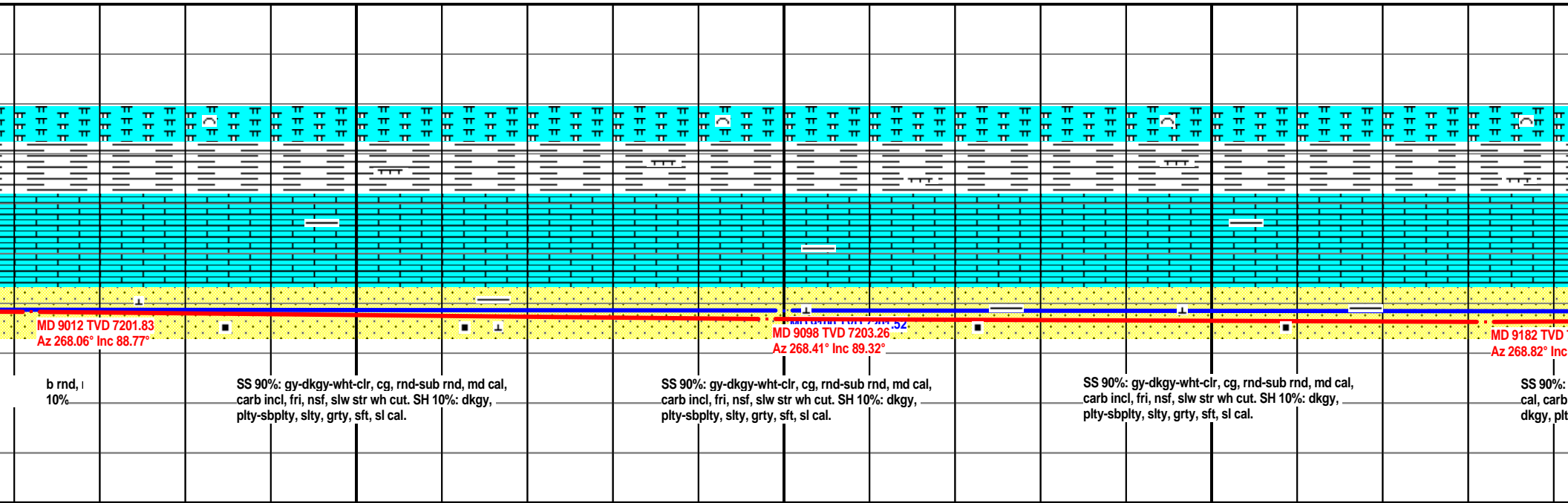
Pason Gas Data Error



9050

9100

9150



MW: 9.9 / VIS: 47

MW: 9.9 / VIS: 47

10000

TG, C1-C5

0

2

RGP (min/ft)

0

250

Gamma (API)

0

9200

9250

9300

9350

7140 TVD

7190

7240

gy-dkgy-wht-clr, fn gr, rnd-sub r
incl, fri, nsf, slw str wh cut. S
y-sbplty, slty, grty, sft

SS 90%: gy-dkgy-wht-clr, fn gr, rnd-sub rnd, md
cal, carb incl, fri, nsf, slw str wh cut. SH 10%:
dkgy, plty-sbplty, slty, grty, sft, sl cal.

SS 90%: gy-dkgy-wht-clr, fn gr, rnd-sub rnd, md
cal, carb incl, fri, nsf, slw str wh cut. SH 10%:
dkgy, plty-sbplty, slty, grty, sft, sl cal.

SS 90%: gy-dkgy-wht-clr, fn gr, rnd-sub rnd, md
cal, carb incl, fri, nsf, slw str wh cut. SH 10%:
dkgy, plty-sbplty, slty, grty, sft, sl cal.

MD 9268 TVD 7202.75
Az 268.76° Inc 91.05°

MD 9353 TVD 7201.67
Az 268.65° Inc 90.4°

MW: 9.9 / VIS: 47

MW: 9.9 / VIS: 47

10000

TG, C1-C5

0

2

RGP (min/ft)

0

250

Gamma (API)

0

9400

9450

9500

9550

7140 TVD

7190

MD 9439 TVD 7201.51
Az 268.94° Inc 89.82°MD 9524 TVD 7201.28
Az 268.91° Inc 90.49°

SS 90%: gy-dkgy-wht-clr, fn gr, rnd-sub rnd, md
cal, carb incl, fri, nsf, slw str wh cut. SH 10%:
dkgy, plty-sbplty, slty, grty, sft, sl cal.

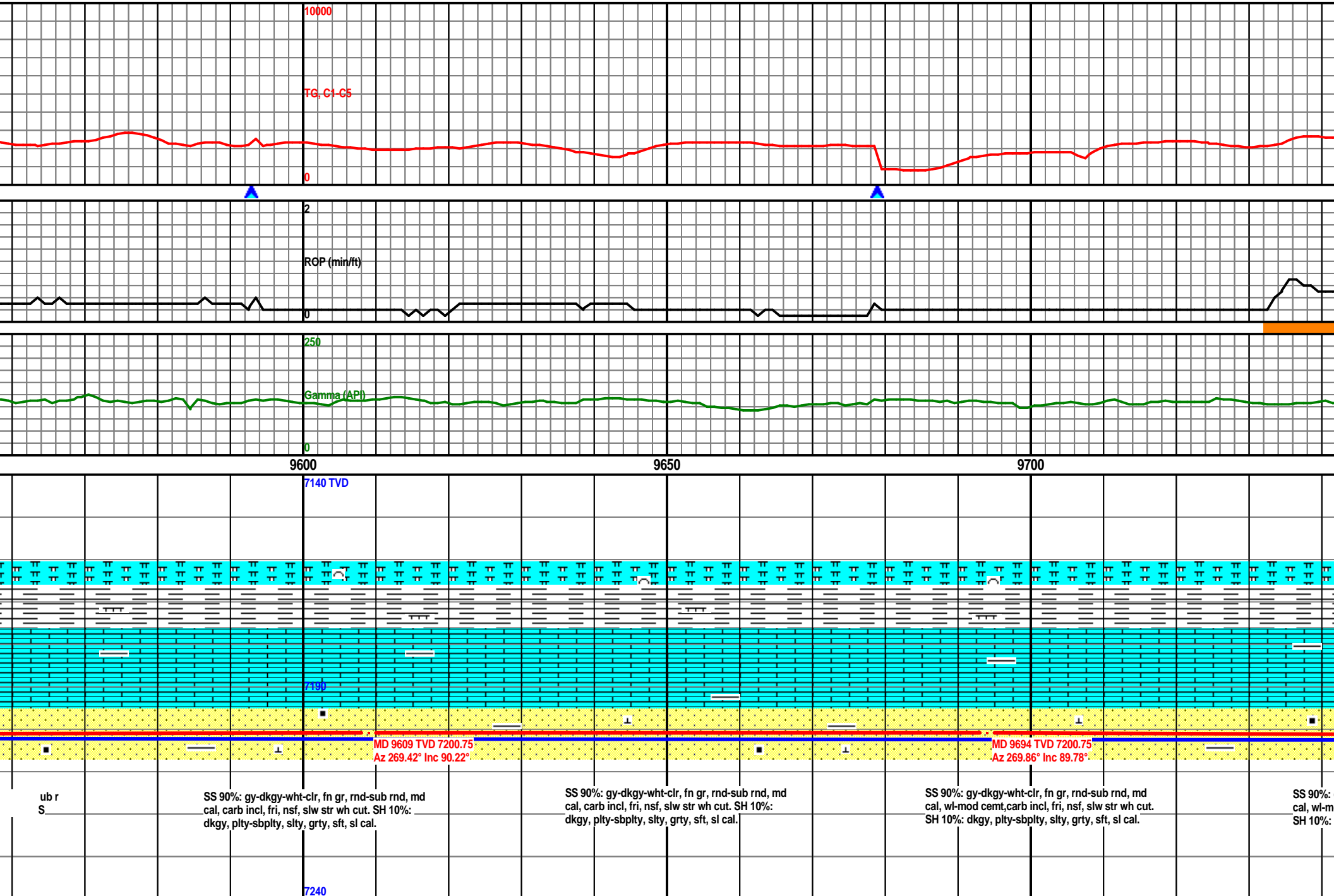
SS 90%: gy-dkgy-wht-clr, fn gr, rnd-sub rnd, md
cal, carb incl, fri, nsf, slw str wh cut. SH 10%:
dkgy, plty-sbplty, slty, grty, sft, sl cal.

SS 90%: gy-dkgy-wht-clr, fn gr, rnd-sub rnd, md
cal, carb incl, fri, nsf, slw str wh cut. SH 10%:
dkgy, plty-sbplty, slty, grty, sft, sl cal.

SS 90%: gy-dkgy-wht-clr, fn gr, rnd-sub rnd, md
cal, carb incl, fri, nsf, slw str wh cut. SH 10%:
dkgy, plty-sbplty, slty, grty, sft, sl cal.

7240

MW: 9.9 / VIS: 47



MW: 9.9 / VIS: 47

MW: 9.9 / VIS: 47

No Recorded
Pason Gas Data

10000

TG, C1-C5

0

2

RGP (min/ft)

0

250

Gamma (API)

0

9750

9800

9850

9900

7140 TVD

7190

MD 9779 TVD 7201.57
Az 269.53° Inc 89.11°

MD 9864 TVD 7202.46
Az 270.78° Inc 89.69°

y-dkgy-wht-clr, fn gr, rnd-sub r
d cement,carb incl, fri, nsf, slw str
dkgy, plty-sbplty, slty, grty, sf

SS 90%: gy-dkgy-wht-clr, fn gr, rnd-sub rnd, md
cal, wl-mod cement,carb incl, fri, nsf, slw str wh cut.
SH 10%: dkgy, plty-sbplty, slty, grty, sft, sl cal.

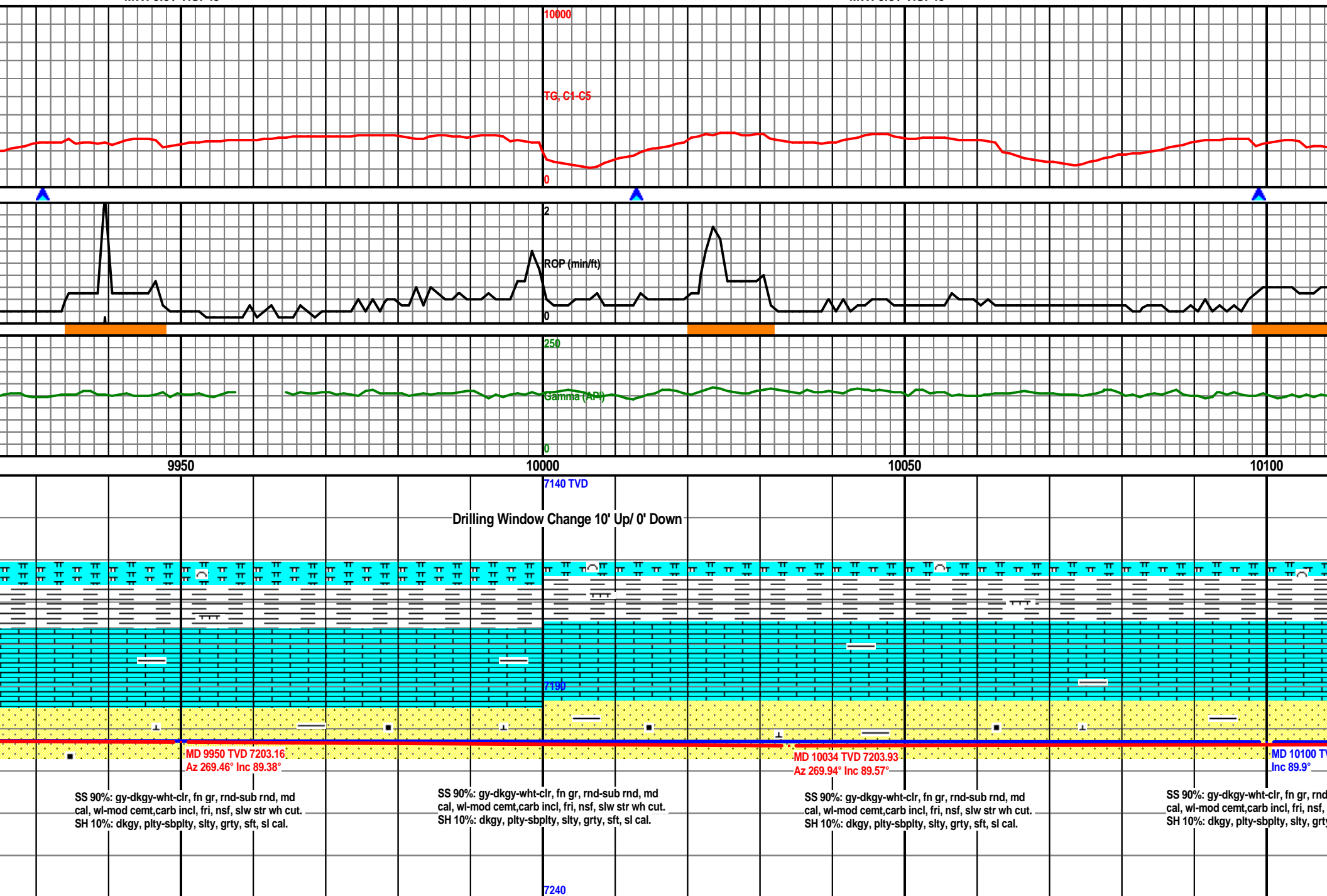
SS 90%: gy-dkgy-wht-clr, fn gr, rnd-sub rnd, md
cal, wl-mod cement,carb incl, fri, nsf, slw str wh cut.
SH 10%: dkgy, plty-sbplty, slty, grty, sft, sl cal.

SS 90%: gy-dkgy-wht-clr, fn gr, rnd-sub rnd, md
cal, wl-mod cement,carb incl, fri, nsf, slw str wh cut.
SH 10%: dkgy, plty-sbplty, slty, grty, sft, sl cal.

7240

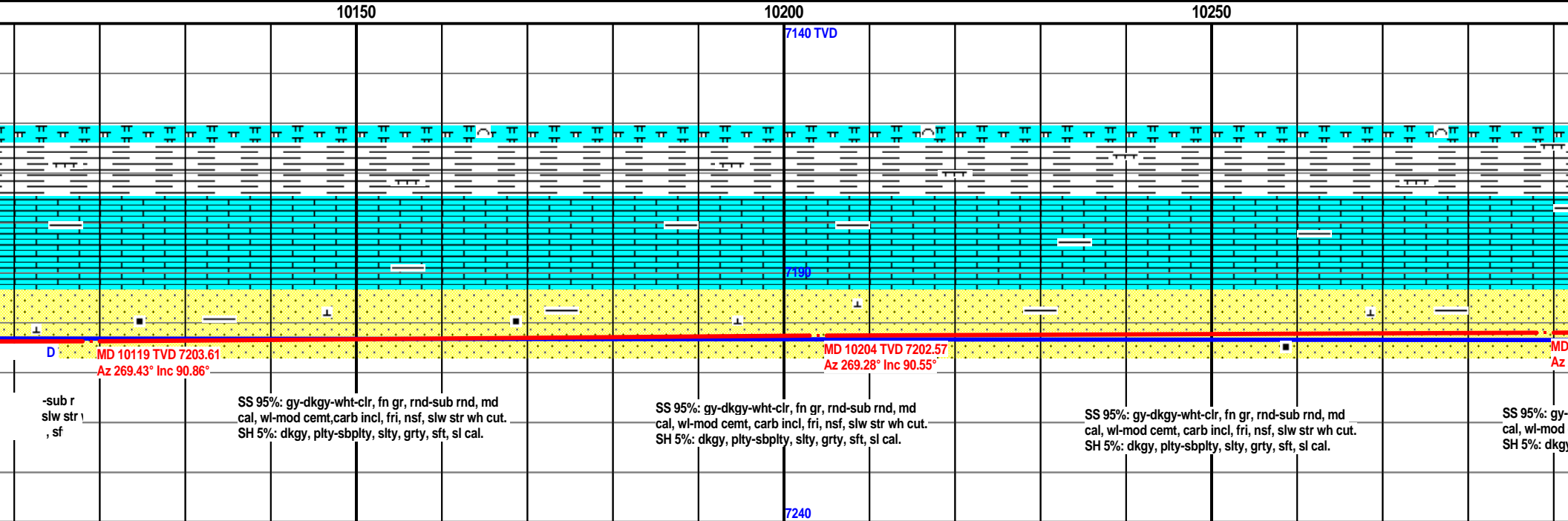
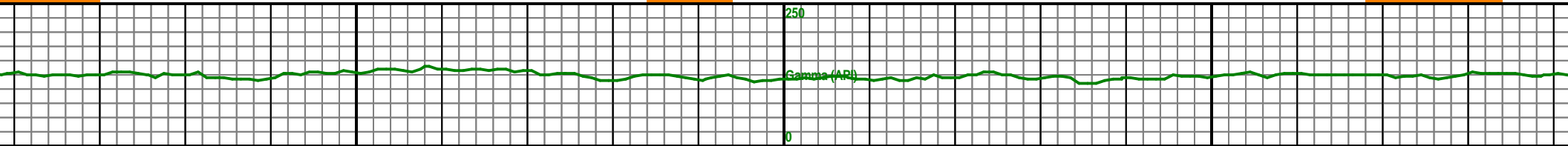
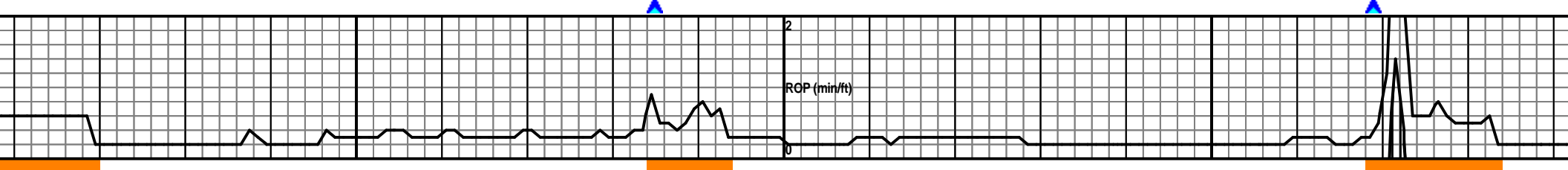
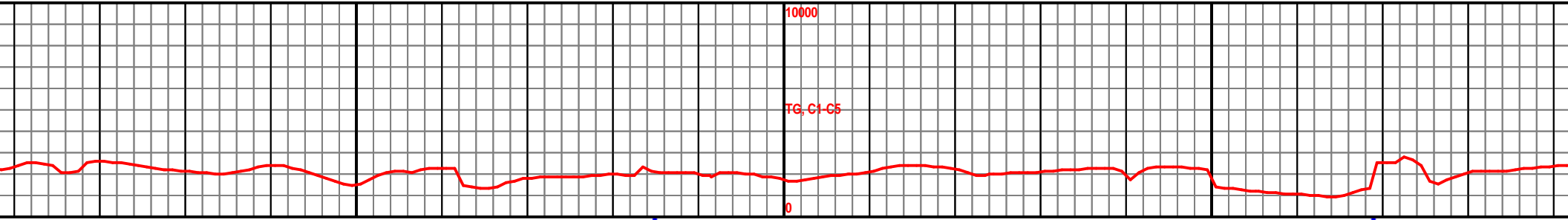
MW: 9.8 / VIS: 45

MW: 9.8 / VIS: 45



MW: 9.8 / VIS: 45

MW: 9.7 / VIS: 45



MW: 9.7 / VIS: 45

MW: 9.7 / VIS: 45

10000

TG, C1-C5

0

2

RGP (min/ft)

0

250

Gamma (API)

0

10300

10350

10400

10450

7140 TVD

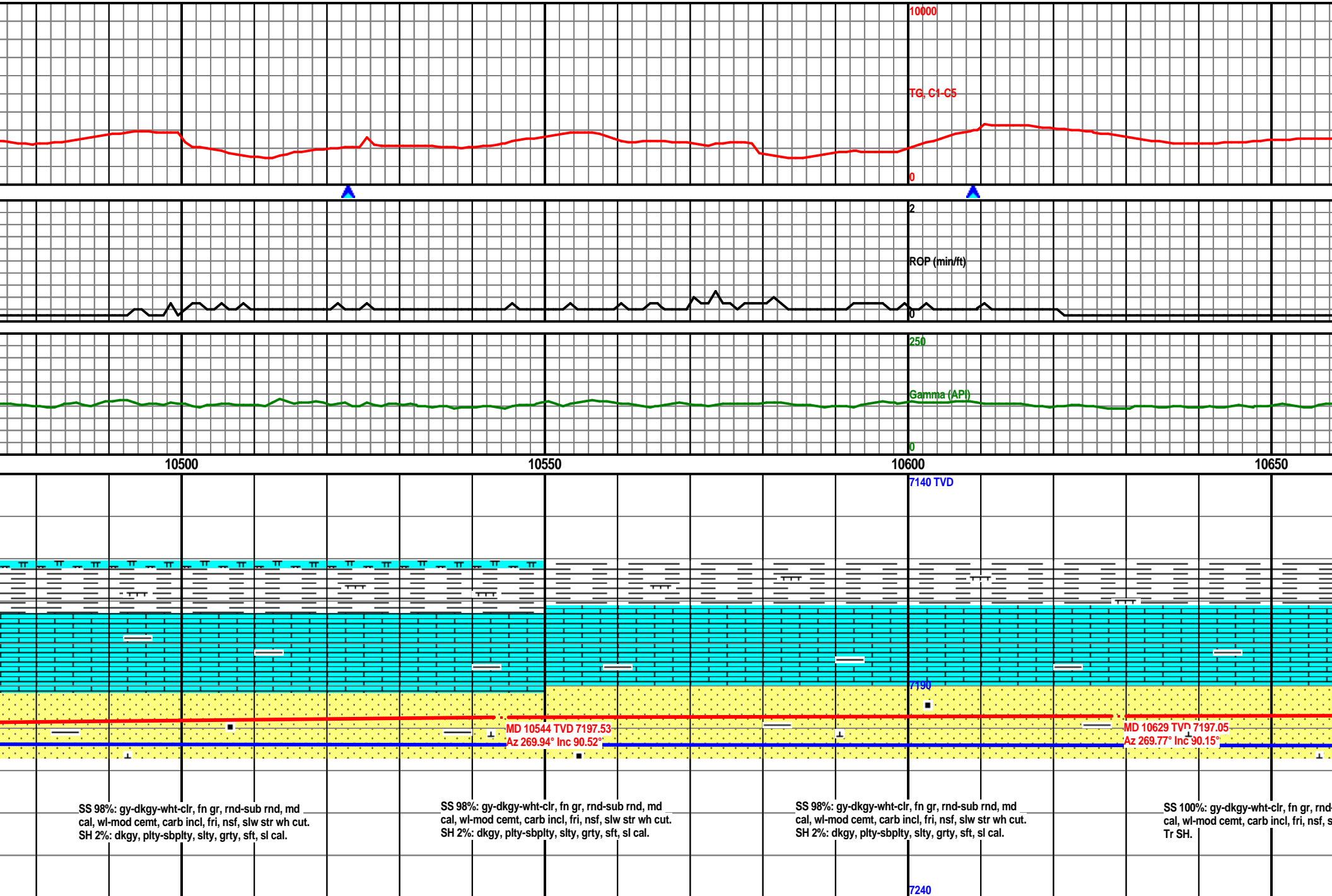
7190

10289 TVD
268.59° InMD 10374 TVD 7200.7
Az 269.68° Inc 91.23°MD 10459 TVD 7198.85
Az 270.33° Inc 91.26°dkgy-wht-clr, fn gr, rnd-sub r
cemt, carb incl, fri, nsf, slw str
, plty-sbplty, slty, grty, sfSS 97%: gy-dkgy-wht-clr, fn gr, rnd-sub rnd, md
cal, wl-mod cemt, carb incl, fri, nsf, slw str wh cut.
SH 3%: dkgy, plty-sbplty, slty, grty, sft, sl cal.SS 97%: gy-dkgy-wht-clr, fn gr, rnd-sub rnd, md
cal, wl-mod cemt, carb incl, fri, nsf, slw str wh cut.
SH 3%: dkgy, plty-sbplty, slty, grty, sft, sl cal.SS 98%: gy-dkgy-wht-clr, fn gr, rnd-sub rnd, md
cal, wl-mod cemt, carb incl, fri, nsf, slw str wh cut.
SH 2%: dkgy, plty-sbplty, slty, grty, sft, sl cal.

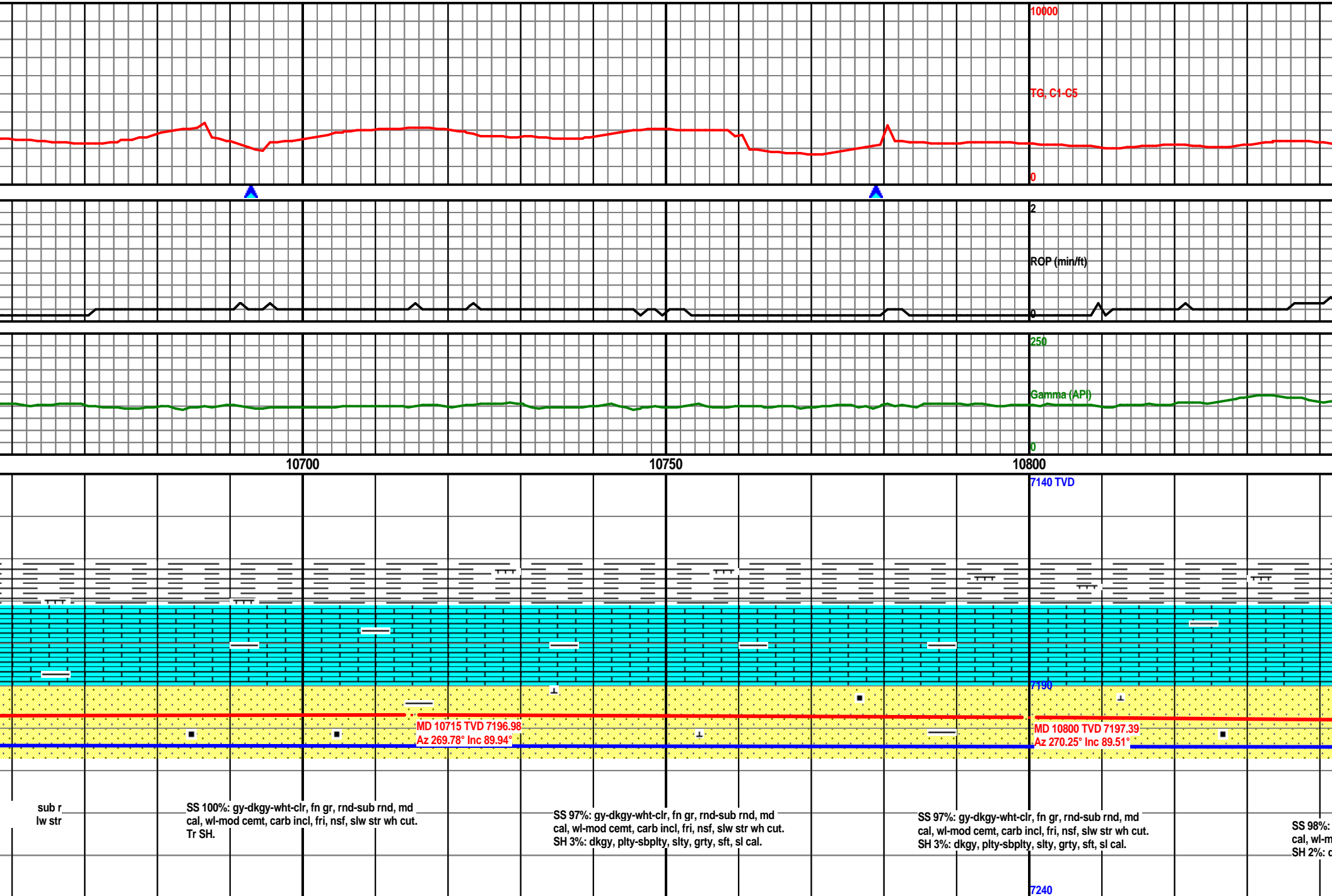
7240

MW: 9.7 / VIS: 48

MW: 9.7 / VIS: 48

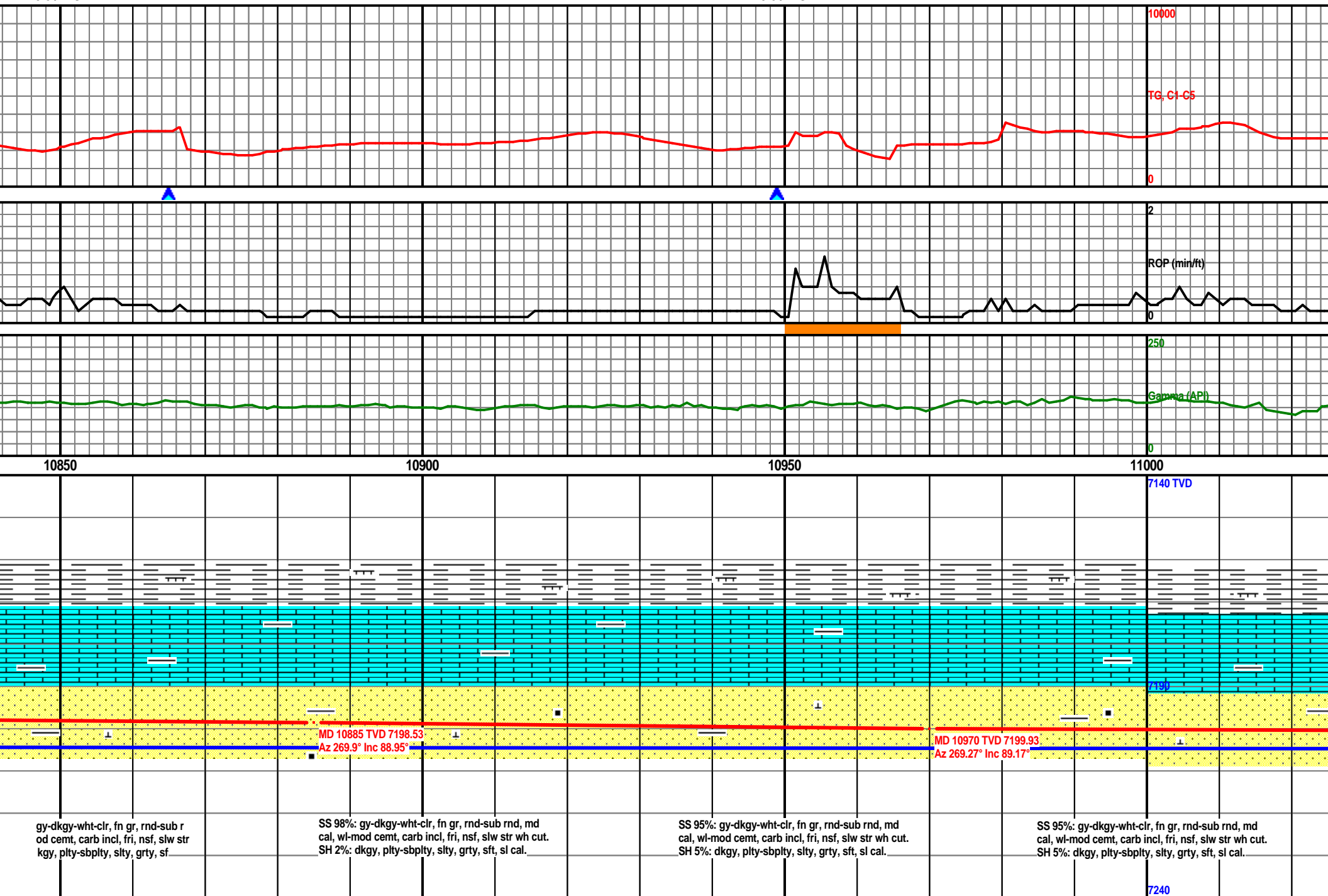


MW: 9.5 / VIS: 42



MW: 9.5 / VIS: 42

MW: 9.5 / VIS: 42



MW: 9.6 / VIS: 47

MW: 9.6 / VIS: 47

5' Flare

10000

TG, C1-C5

0

2

RGP (min/ft)

0

Gamma (API)

0

11050

11100

11150

11200

7140 TVD

7190

MD 11055 TVD 7200.59
Az 270.06° Inc 89.94°

MD 11100 TVD 7204.92
Inc 89.9°

MD 11140 TVD 7200.79
Az 268.91° Inc 89.78°

SS 98%: gy-dkgy-wht-clr, fn gr, rnd-sub rnd, md
cal, wl-mod cement, carb incl, fri, nsf, slw str wh cut.
SH 2%: dkgy, plty-sbplty, slty, grty, sft, sl cal.

SS 98%: gy-dkgy-wht-clr, fn gr, rnd-sub rnd, md
cal, wl-mod cement, carb incl, fri, nsf, slw str wh cut.
SH 2%: dkgy, plty-sbplty, slty, grty, sft, sl cal.

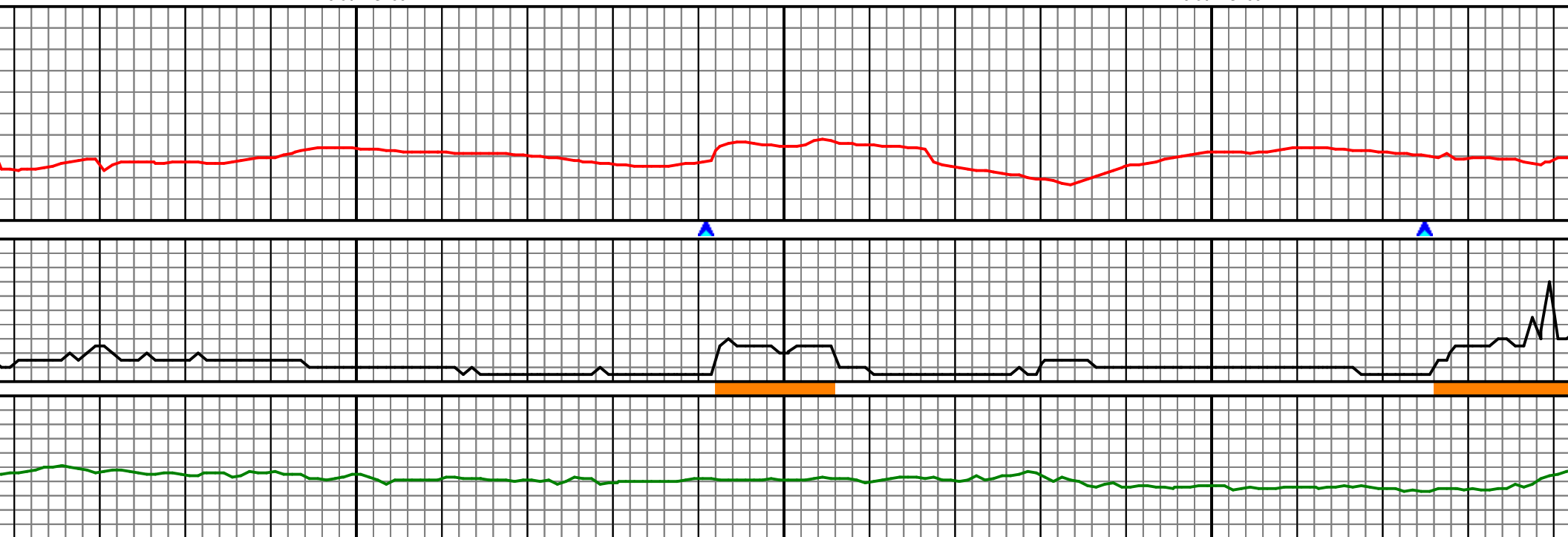
SS 97%: gy-dkgy-wht-clr, fn gr, rnd-sub rnd, md
cal, wl cement, carb incl, fri, nsf, slw str wh cut. SH
3%: dkgy, plty-sbplty, slty, grty, sft, sl cal.

SS 97%: gy-dkgy-wht-clr, fn gr, rnd-sub
cal, wl cement, carb incl, fri, nsf, slw str
3%: dkgy, plty-sbplty, slty, grty, sft, sl

7240

MW: 9.8 / VIS: 50

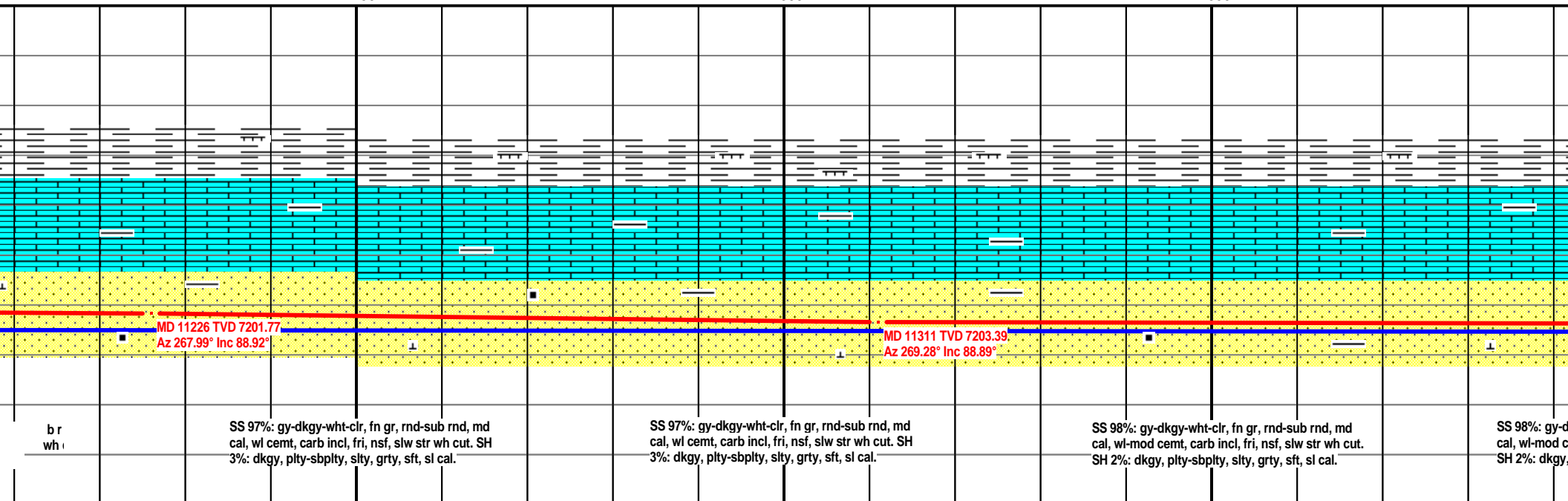
MW: 9.8 / VIS: 50



11250

11300

11350



b r
wh i

SS 97%: gy-dkgy-wht-clr, fn gr, rnd-sub rnd, md
cal, wl cement, carb incl, fri, nsf, slw str wh cut. SH
3%: dkgy, plty-sbplty, slty, grty, sft, sl cal.

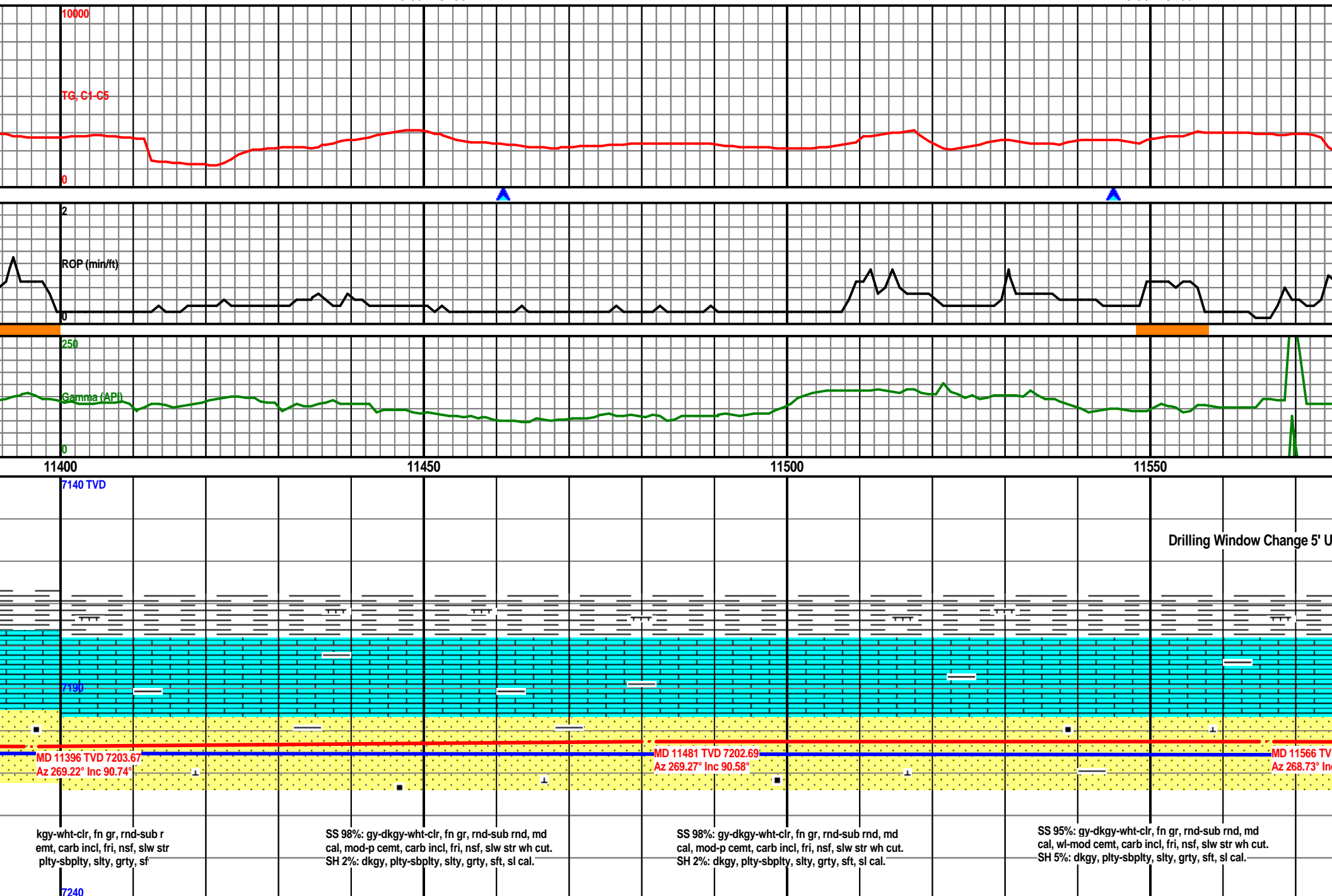
SS 97%: gy-dkgy-wht-clr, fn gr, rnd-sub rnd, md
cal, wl cement, carb incl, fri, nsf, slw str wh cut. SH
3%: dkgy, plty-sbplty, slty, grty, sft, sl cal.

SS 98%: gy-dkgy-wht-clr, fn gr, rnd-sub rnd, md
cal, wl-mod cement, carb incl, fri, nsf, slw str wh cut.
SH 2%: dkgy, plty-sbplty, slty, grty, sft, sl cal.

SS 98%: gy-d
cal, wl-mod c
SH 2%: dkgy,

MW: 9.8 / VIS: 50

MW: 9.9 / VIS: 55



MW: 9.9 / VIS: 55

MW: 9.9 / VIS: 55

10000

TG, C1-C5

0

2

RGP (min/ft)

0

250

Gamma (API)

0

11600

11650

11700

11750

7140 TVD

7190

MD 11651 TVD 7203.18
Az 268.71° Inc 89.32°MD 11736 TVD 7203.96
Az 268.84° Inc 89.63°

SS 95%: gy-dkgy-wht-clr, fn gr, rnd-sub rnd, md
cal, wl-mod cement, carb incl, fri, nsf, slw str wh cut.
SH 5%: dkgy, plty-sbplty, slty, grty, sft, sl cal.

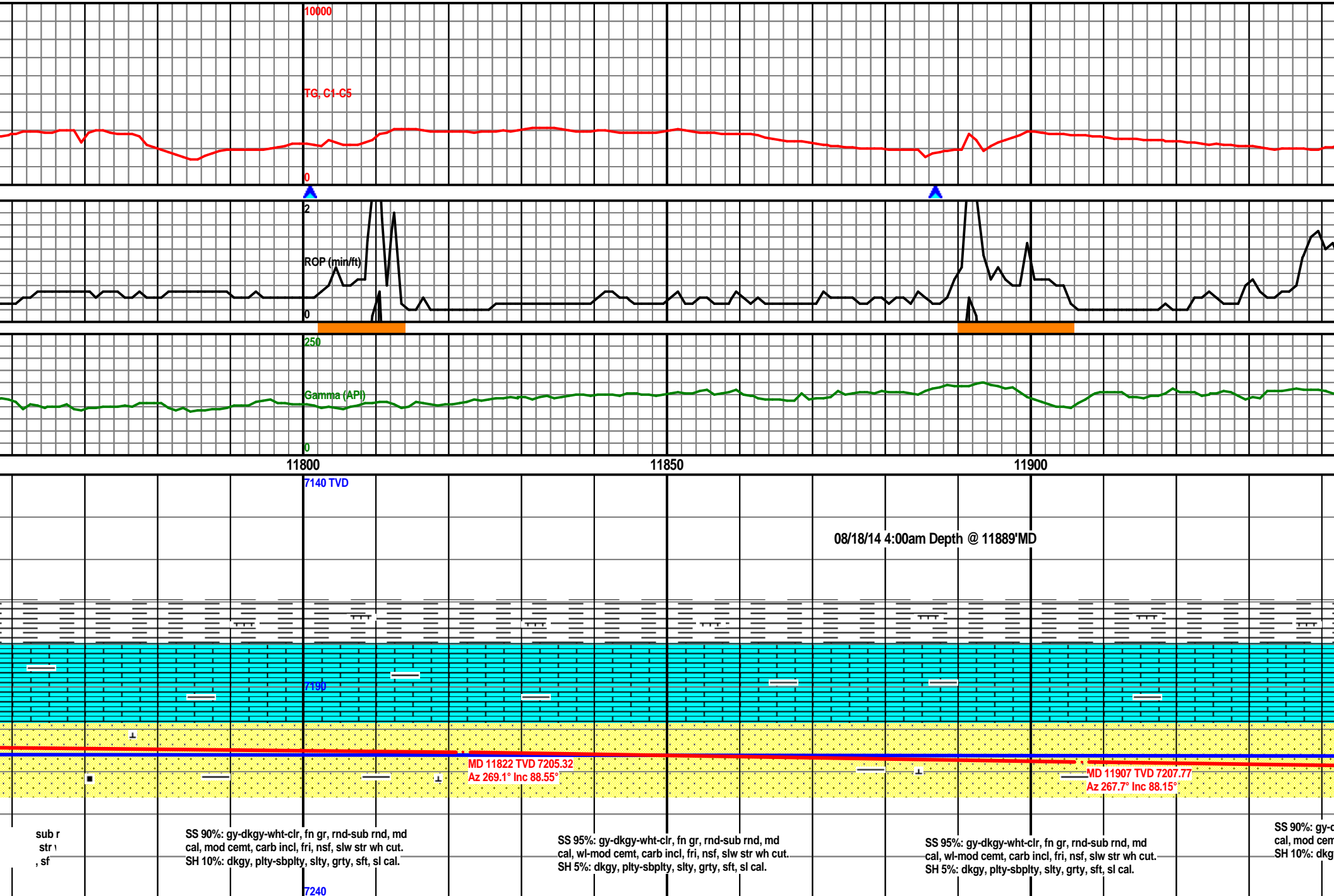
SS 90%: gy-dkgy-wht-clr, fn gr, rnd-sub rnd, md
cal, mod-p cement, carb incl, fri, nsf, slw str wh cut.
SH 10%: dkgy, plty-sbplty, slty, grty, sft, sl cal.

SS 90%: gy-dkgy-wht-clr, fn gr, rnd-sub rnd, md
cal, mod-p cement, carb incl, fri, nsf, slw str wh cut.
SH 10%: dkgy, plty-sbplty, slty, grty, sft, sl cal.

SS 90%: gy-dkgy-wht-clr, fn gr, rnd-sub rnd, md
cal, mod cement, carb incl, fri, nsf, slw str wh cut.
SH 10%: dkgy, plty-sbplty, slty, grty, sft, sl cal.

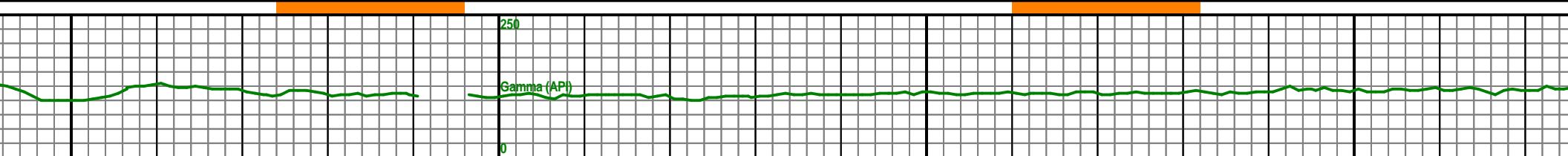
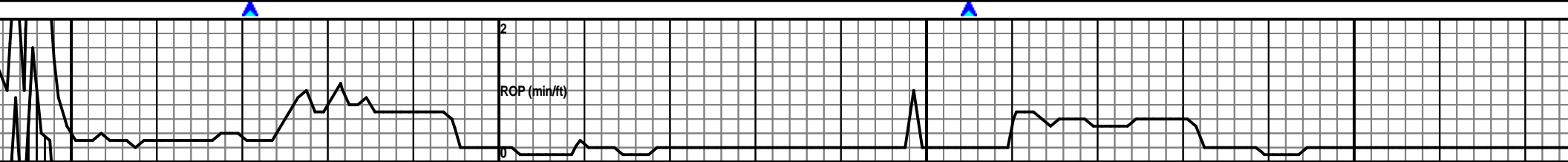
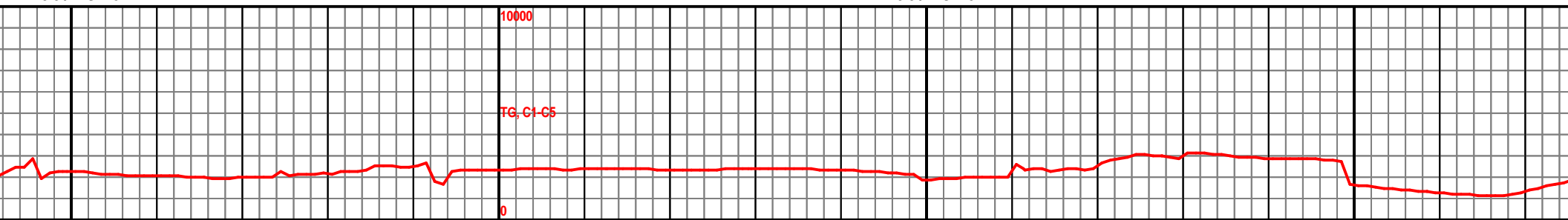
7240

MW: 9.9 / VIS: 45



MW: 9.9 / VIS: 45

MW: 9.9 / VIS: 45

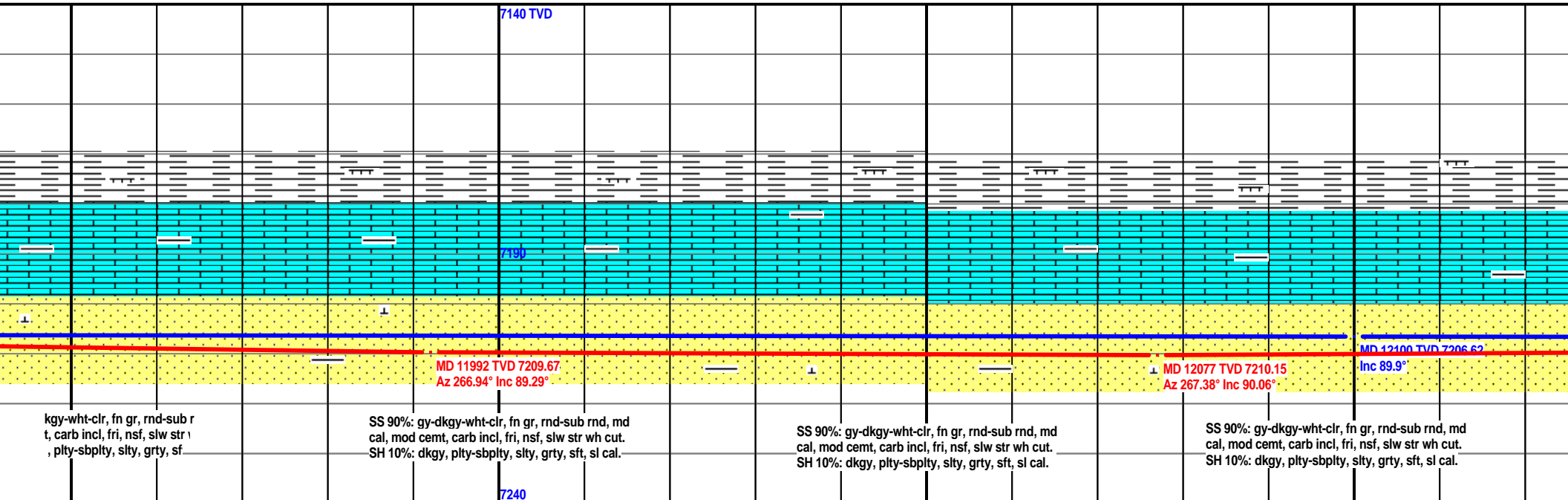


11950

12000

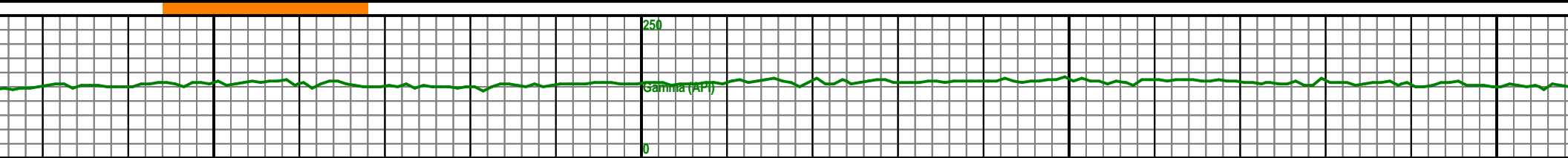
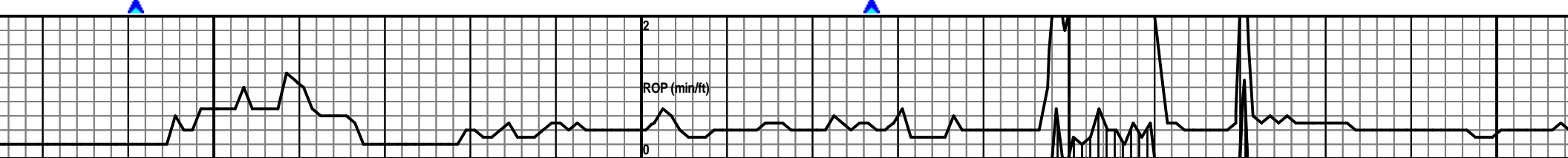
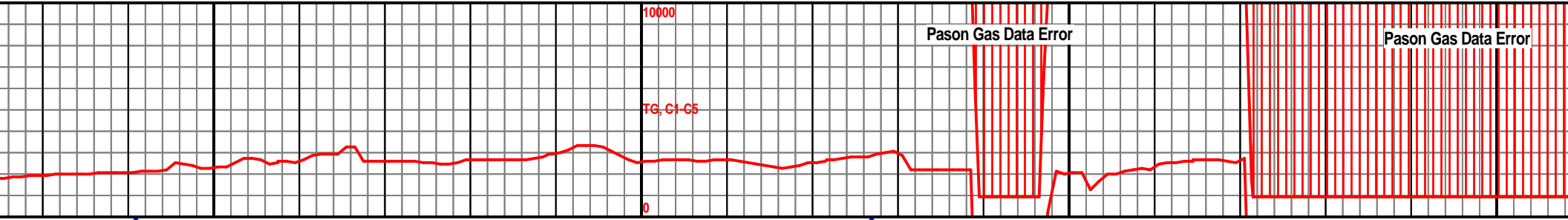
12050

12100



MW: 9.9 / VIS: 45

MW: 9.9 / VIS: 44

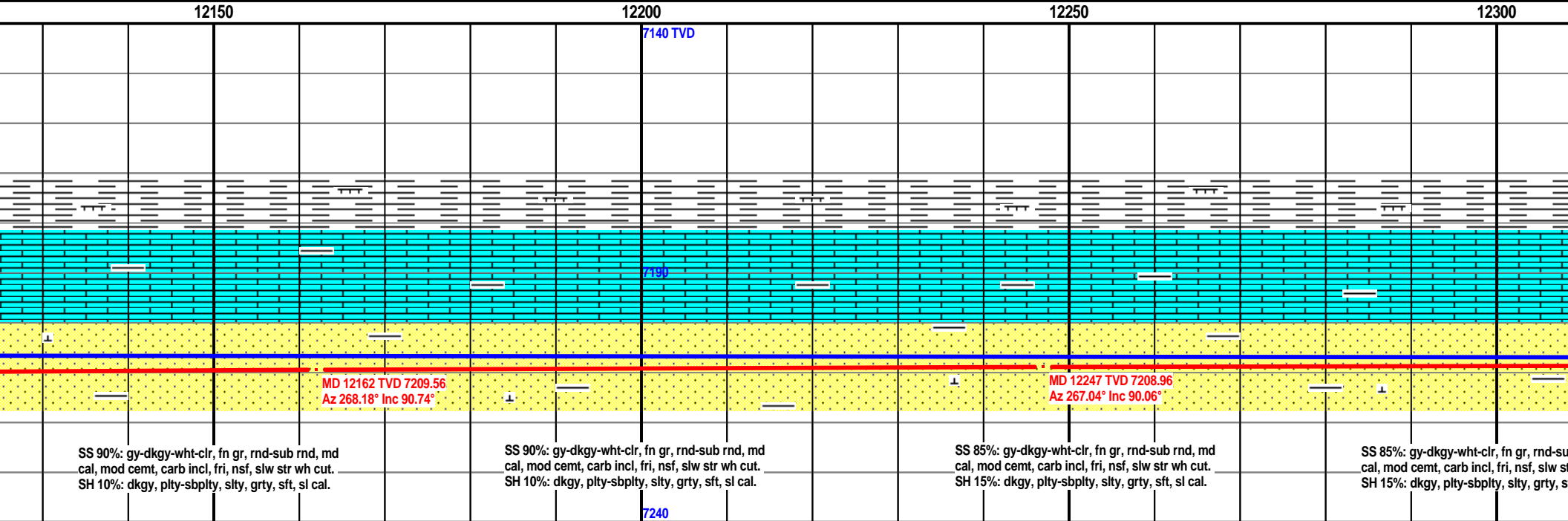


12150

12200

12250

12300



MW: 9.9 / VIS: 45

MW: 9.9 / VIS: 45

Pason Gas Data Error

10000

TG, C1-C5

0

2

RGP (min/ft)

0

250

Gamma (API)

0

12350

12400

12450

7140 TVD

7190

MD 12332 TVD 7208.56
Az 267.53° Inc 90.49°MD 12418 TVD 7208.19
Az 268.34° Inc 90°br
rl
fSS 85%: gy-dkgy-wht-clr, fn gr, rnd-sub rnd, md
cal, mod cement, carb incl, fri, nsf, slw str wh cut.
SH 15%: dkgy, plty-sbpty, slty, grty, sft, sl cal.SS 85%: gy-dkgy-wht-clr, fn gr, rnd-sub rnd, md
cal, mod cement, carb incl, fri, nsf, slw str wh cut.
SH 15%: dkgy, plty-sbpty, slty, grty, sft, sl cal.SS 90%: gy-dkgy-wht-clr, fn gr, rnd-sub rnd, md
cal, mod cement, carb incl, fri, nsf, slw str wh cut.
SH 10%: dkgy, plty-sbpty, slty, grty, sft, sl cal.SS 90%:
cal, mod
SH 10%:

7240

MW: 9.9 / VIS: 47

TD of 12581' MD Achieved @
11:37AM 08/18/14.

10000

TG, C1-C5

0

2

RGP (min/ft)

0

250

Two man logging unit with
sample program released
08/18/14.

LOGGING (API)

0

12500

12550

12600

7140 TVD

7190

MD 12503 TVD 7209.08
Az 267.33° Inc 88.8°

MD 12581 TVD 7209.4
Az 267.46° Inc 88.58°

y-dkgy-wht-clr, fn gr, rnd-sub r
cemt, carb incl, fri, nsf, slw str
dkgy, plty-sbply, slty, grty, sf

SS 90%: gy-dkgy-wht-clr, fn gr, rnd-sub rnd, md
cal, mod cemt, carb incl, fri, nsf, slw str wh cut.
SH 10%: dkgy, plty-sbply, slty, grty, sft, sl cal.

7240