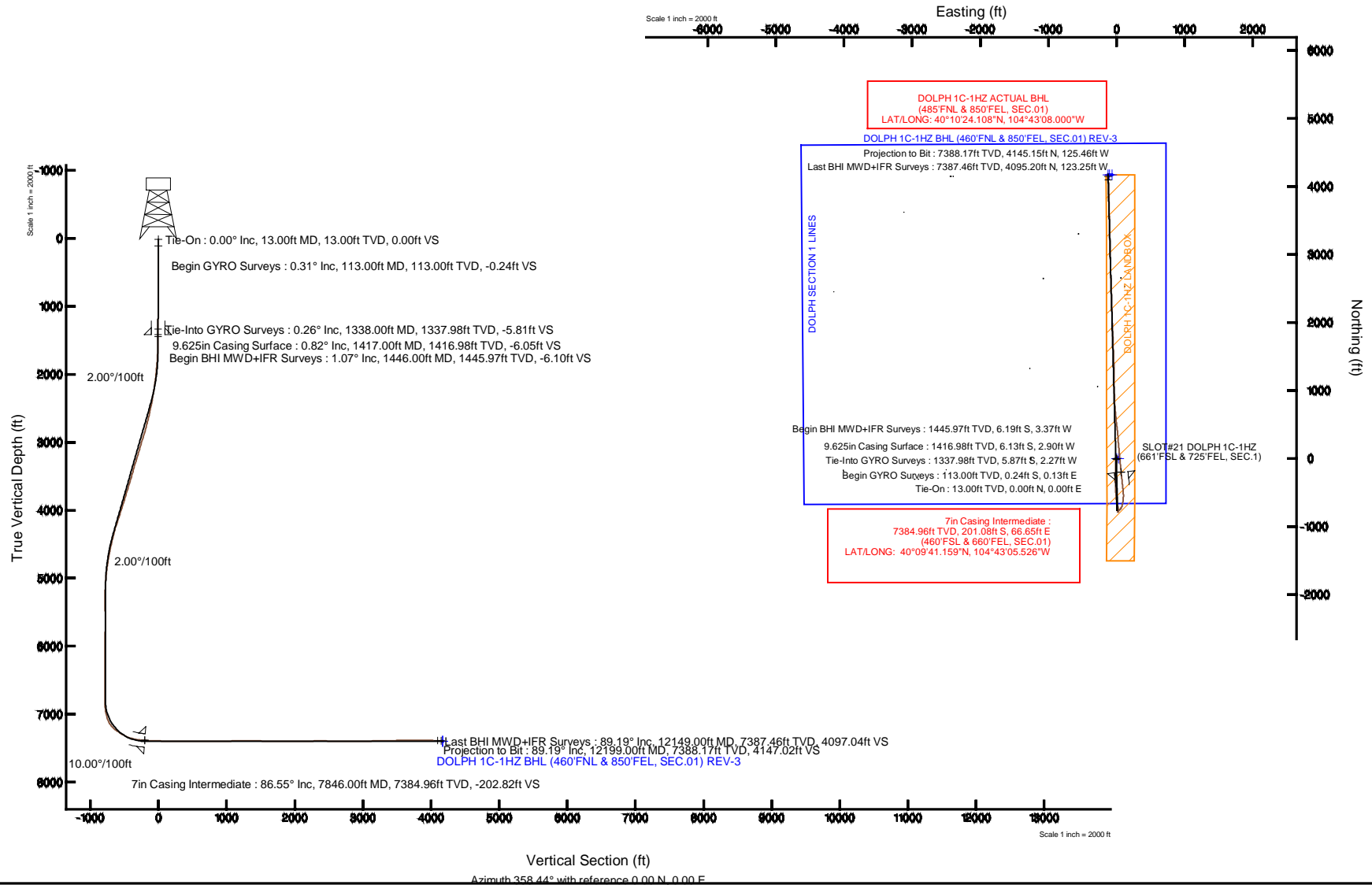


KERR-MCGEE OIL & GAS ONSHORE LP

Location: COLORADO Slot: SLOT#21 DOLPH 1C-1HZ (661FSL & 725FEL, SEC.1)
 Field: WELD COUNTY (KERR MCGEE) Well: DOLPH 1C-1HZ
 Facility: SEC.01-T2N-R66W Wellbore: DOLPH 1C-1HZ PWB

Plot reference wellpath is DOLPH 1C-1HZ (REV.C.0) PWB

True vertical depths are referenced to ENSIGN 145 (13KB) (RKB)	Grid System: NAD83 / Lambert Colorado SP, Northern Zone (501), US feet
Measured depths are referenced to ENSIGN 145 (13KB) (RKB)	North Reference: True north
ENSGN 145 (13KB) (RKB) to Mean Sea Level: 5001 feet	Scale: True distance
Mean Sea Level to Mud line (At Slot: SLOT#21 DOLPH 1C-1HZ (661FSL & 725FEL, SEC.1)): 0 feet	Depths are in feet
Coordinates are in feet referenced to Slot	Created by: precain on 13/Oct/2014



REFERENCE WELLPATH IDENTIFICATION			
Operator	KERR-MCGEE OIL & GAS ONSHORE LP	Slot	SLOT#21 DOLPH 1C-1HZ (661'FSL & 725'FEL, SEC.1)
Area	COLORADO	Well	DOLPH 1C-1HZ
Field	WELD COUNTY (KERR MCGEE)	Wellbore	DOLPH 1C-1HZ AWB
Facility	SEC.01-T2N-R66W		

REPORT SETUP INFORMATION			
Projection System	NAD83 / Lambert Colorado SP, Northern Zone (501), US feet	Software System	WellArchitect® 4.0.0
North Reference	True	User	Precain
Scale	0.999958	Report Generated	13/Oct/2014 at 14:35
Convergence at slot	n/a	Database/Source file	WellArchitectDB/DOLPH_1C-1HZ_AWB.xml

WELLPATH LOCATION						
	Local coordinates		Grid coordinates		Geographic coordinates	
	North[ft]	East[ft]	Easting[US ft]	Northing[US ft]	Latitude	Longitude
Slot Location	-362.25	3320.47	3218433.93	1302816.90	40°09'43.146"N	104°43'06.384"W
Facility Reference Pt			3215110.60	1303150.30	40°09'46.728"N	104°43'49.152"W
Field Reference Pt			3197771.84	1268891.29	40°04'09.600"N	104°47'36.000"W

WELLPATH DATUM			
Calculation method	Minimum curvature	ENSIGN 145 (13'KB) (RKB) to Facility Vertical Datum	5001.00ft
Horizontal Reference Pt	Slot	ENSIGN 145 (13'KB) (RKB) to Mean Sea Level	5001.00ft
Vertical Reference Pt	ENSIGN 145 (13'KB) (RKB)	ENSIGN 145 (13'KB) (RKB) to Mud Line at Slot (SLOT#21 DOLPH 1C-1HZ (661'FSL & 725'FEL, SEC.1))	5001.00ft
MD Reference Pt	ENSIGN 145 (13'KB) (RKB)	Section Origin	N 0.00, E 0.00 ft
Field Vertical Reference	Mean Sea Level	Section Azimuth	358.44°

REFERENCE WELLPATH IDENTIFICATION				
Operator	KERR-MCGEE OIL & GAS ONSHORE LP		Slot	SLOT#21 DOLPH 1C-1HZ (661'FSL & 725'FEL, SEC.1)
Area	COLORADO		Well	DOLPH 1C-1HZ
Field	WELD COUNTY (KERR MCGEE)		Wellbore	DOLPH 1C-1HZ AWP
Facility	SEC.01-T2N-R66W			

WELLPATH DATA (141 stations) † = interpolated/extrapolated station

MD [ft]	Inclination [°]	Azimuth [°]	TVD [ft]	Vert Sect [ft]	North [ft]	East [ft]	Latitude	Longitude	DLS [°/100ft]	Comments
0.00†	0.000	152.220	0.00	0.00	0.00	0.00	40°09'43.146"N	104°43'06.384"W	0.00	
13.00	0.000	152.220	13.00	0.00	0.00	0.00	40°09'43.146"N	104°43'06.384"W	0.00	Tie-On
113.00	0.310	152.220	113.00	-0.24	-0.24	0.13	40°09'43.144"N	104°43'06.382"W	0.31	Begin GYRO Surveys
213.00	0.300	167.180	213.00	-0.74	-0.73	0.31	40°09'43.139"N	104°43'06.380"W	0.08	
313.00	0.370	183.870	313.00	-1.32	-1.31	0.35	40°09'43.133"N	104°43'06.380"W	0.12	
413.00	0.330	219.750	412.99	-1.86	-1.85	0.14	40°09'43.128"N	104°43'06.382"W	0.22	
513.00	0.290	202.830	512.99	-2.30	-2.31	-0.14	40°09'43.123"N	104°43'06.386"W	0.10	
613.00	0.470	221.640	612.99	-2.83	-2.85	-0.51	40°09'43.118"N	104°43'06.391"W	0.22	
713.00	0.270	241.950	712.99	-3.24	-3.27	-0.99	40°09'43.114"N	104°43'06.397"W	0.24	
813.00	0.350	224.510	812.99	-3.56	-3.60	-1.41	40°09'43.110"N	104°43'06.402"W	0.12	
913.00	0.320	182.480	912.99	-4.05	-4.09	-1.64	40°09'43.106"N	104°43'06.405"W	0.24	
1013.00	0.240	179.640	1012.98	-4.53	-4.58	-1.65	40°09'43.101"N	104°43'06.405"W	0.08	
1113.00	0.210	228.280	1112.98	-4.86	-4.91	-1.79	40°09'43.097"N	104°43'06.407"W	0.19	
1213.00	0.310	202.900	1212.98	-5.23	-5.28	-2.03	40°09'43.094"N	104°43'06.410"W	0.15	
1313.00	0.280	200.820	1312.98	-5.70	-5.76	-2.22	40°09'43.089"N	104°43'06.413"W	0.03	
1338.00	0.260	205.210	1337.98	-5.81	-5.87	-2.27	40°09'43.088"N	104°43'06.413"W	0.12	Tie-Into GYRO Surveys
1446.00	1.070	264.090	1445.97	-6.10	-6.19	-3.37	40°09'43.085"N	104°43'06.427"W	0.89	Begin BHI MWD+IFR Surveys
1539.00	2.010	241.270	1538.94	-6.91	-7.07	-5.67	40°09'43.076"N	104°43'06.457"W	1.19	
1633.00	2.270	207.320	1632.88	-9.29	-9.51	-7.97	40°09'43.052"N	104°43'06.487"W	1.36	
1726.00	3.440	199.500	1725.76	-13.51	-13.78	-9.75	40°09'43.010"N	104°43'06.510"W	1.32	
1820.00	4.370	193.620	1819.54	-19.60	-19.92	-11.53	40°09'42.949"N	104°43'06.533"W	1.08	
1913.00	5.290	181.140	1912.21	-27.30	-27.65	-12.45	40°09'42.873"N	104°43'06.544"W	1.50	
2007.00	6.360	186.900	2005.73	-36.78	-37.15	-13.16	40°09'42.779"N	104°43'06.554"W	1.30	
2100.00	7.500	183.720	2098.05	-47.92	-48.32	-14.17	40°09'42.668"N	104°43'06.567"W	1.29	
2194.00	8.360	179.280	2191.15	-60.86	-61.28	-14.49	40°09'42.540"N	104°43'06.571"W	1.12	
2287.00	9.480	173.270	2283.02	-75.25	-75.64	-13.50	40°09'42.398"N	104°43'06.558"W	1.57	
2471.00	11.470	181.540	2463.96	-108.61	-108.99	-12.22	40°09'42.069"N	104°43'06.541"W	1.35	
2561.00	11.990	183.250	2552.08	-126.86	-127.26	-12.99	40°09'41.888"N	104°43'06.551"W	0.69	
2651.00	13.350	181.780	2639.89	-146.55	-146.98	-13.84	40°09'41.693"N	104°43'06.562"W	1.55	
2741.00	14.210	185.110	2727.30	-167.90	-168.37	-15.15	40°09'41.482"N	104°43'06.579"W	1.30	
2831.00	15.550	180.760	2814.28	-190.93	-191.44	-16.29	40°09'41.254"N	104°43'06.594"W	1.94	
2921.00	17.480	183.850	2900.56	-216.44	-216.99	-17.36	40°09'41.002"N	104°43'06.608"W	2.36	
3011.00	16.920	181.700	2986.54	-242.97	-243.57	-18.66	40°09'40.739"N	104°43'06.624"W	0.94	
3100.00	16.610	179.910	3071.76	-268.62	-269.24	-19.02	40°09'40.485"N	104°43'06.629"W	0.68	
3190.00	16.180	180.470	3158.10	-294.01	-294.64	-19.10	40°09'40.234"N	104°43'06.630"W	0.51	
3280.00	17.630	180.200	3244.21	-320.16	-320.81	-19.25	40°09'39.976"N	104°43'06.632"W	1.61	
3370.00	16.380	177.770	3330.27	-346.48	-347.12	-18.81	40°09'39.716"N	104°43'06.626"W	1.60	
3460.00	15.380	177.100	3416.83	-371.10	-371.72	-17.71	40°09'39.473"N	104°43'06.612"W	1.13	
3550.00	16.090	177.740	3503.46	-395.50	-396.10	-16.62	40°09'39.232"N	104°43'06.598"W	0.81	
3640.00	16.700	177.780	3589.80	-420.90	-421.49	-15.62	40°09'38.981"N	104°43'06.585"W	0.68	
3730.00	18.170	176.690	3675.66	-447.86	-448.42	-14.31	40°09'38.715"N	104°43'06.568"W	1.67	
3821.00	16.360	175.390	3762.56	-474.84	-475.36	-12.46	40°09'38.448"N	104°43'06.545"W	2.03	
3911.00	17.070	178.500	3848.76	-500.71	-501.20	-11.10	40°09'38.193"N	104°43'06.527"W	1.27	
4001.00	17.900	175.540	3934.60	-527.73	-528.19	-9.68	40°09'37.926"N	104°43'06.509"W	1.35	
4091.00	16.450	173.980	4020.59	-554.25	-554.66	-7.26	40°09'37.665"N	104°43'06.478"W	1.69	

REFERENCE WELLPATH IDENTIFICATION				
Operator	KERR-MCGEE OIL & GAS ONSHORE LP		Slot	SLOT#21 DOLPH 1C-1HZ (661'FSL & 725'FEL, SEC.1)
Area	COLORADO		Well	DOLPH 1C-1HZ
Field	WELD COUNTY (KERR MCGEE)		Wellbore	DOLPH 1C-1HZ AWB
Facility	SEC.01-T2N-R66W			

WELLPATH DATA (141 stations)

MD [ft]	Inclination [°]	Azimuth [°]	TVD [ft]	Vert Sect [ft]	North [ft]	East [ft]	Latitude	Longitude	DLS ["/100ft]	Comments
4181.00	18.460	175.210	4106.44	-581.19	-581.53	-4.74	40°09'37.399"N	104°43'06.445"W	2.27	
4271.00	17.990	175.340	4191.92	-609.29	-609.58	-2.42	40°09'37.122"N	104°43'06.415"W	0.52	
4361.00	17.020	171.850	4277.76	-636.26	-636.48	0.58	40°09'36.856"N	104°43'06.377"W	1.59	
4451.00	14.660	164.470	4364.34	-660.40	-660.49	5.50	40°09'36.619"N	104°43'06.313"W	3.44	
4541.00	13.530	162.240	4451.63	-681.56	-681.49	11.76	40°09'36.411"N	104°43'06.233"W	1.39	
4631.00	11.990	168.430	4539.41	-700.88	-700.68	16.84	40°09'36.222"N	104°43'06.167"W	2.29	
4721.00	10.670	173.520	4627.66	-718.39	-718.12	19.66	40°09'36.050"N	104°43'06.131"W	1.84	
4811.00	9.610	182.220	4716.26	-734.19	-733.91	20.31	40°09'35.894"N	104°43'06.122"W	2.07	
4901.00	8.780	182.300	4805.10	-748.54	-748.28	19.74	40°09'35.751"N	104°43'06.130"W	0.92	
4991.00	6.950	181.230	4894.25	-760.83	-760.58	19.35	40°09'35.630"N	104°43'06.135"W	2.04	
5081.00	5.300	171.580	4983.73	-770.40	-770.14	19.84	40°09'35.535"N	104°43'06.128"W	2.15	
5171.00	3.740	166.680	5073.45	-777.40	-777.11	21.13	40°09'35.467"N	104°43'06.112"W	1.78	
5261.00	1.960	152.670	5163.34	-781.66	-781.33	22.51	40°09'35.425"N	104°43'06.094"W	2.11	
5351.00	0.830	128.940	5253.31	-783.47	-783.11	23.72	40°09'35.407"N	104°43'06.078"W	1.38	
5439.00	0.930	326.130	5341.31	-783.28	-782.92	23.82	40°09'35.409"N	104°43'06.077"W	1.98	
5619.00	0.640	294.300	5521.29	-781.60	-781.29	22.09	40°09'35.425"N	104°43'06.099"W	0.28	
6069.00	0.910	199.840	5971.26	-783.83	-783.62	18.59	40°09'35.402"N	104°43'06.145"W	0.26	
6159.00	0.720	95.020	6061.26	-784.56	-784.34	18.91	40°09'35.395"N	104°43'06.140"W	1.44	
6249.00	0.990	80.150	6151.25	-784.52	-784.26	20.24	40°09'35.396"N	104°43'06.123"W	0.39	
6339.00	1.400	76.800	6241.23	-784.18	-783.87	22.07	40°09'35.400"N	104°43'06.100"W	0.46	
6429.00	0.150	253.780	6331.22	-783.99	-783.66	23.03	40°09'35.402"N	104°43'06.087"W	1.72	
6609.00	0.900	160.360	6511.21	-785.40	-785.05	23.28	40°09'35.388"N	104°43'06.084"W	0.51	
6699.00	0.660	251.290	6601.21	-786.22	-785.88	23.03	40°09'35.380"N	104°43'06.087"W	1.25	
6789.00	0.440	272.250	6691.20	-786.35	-786.04	22.19	40°09'35.378"N	104°43'06.098"W	0.33	
6879.00	0.660	275.690	6781.20	-786.26	-785.97	21.33	40°09'35.379"N	104°43'06.109"W	0.25	
6924.00	1.140	345.490	6826.19	-785.79	-785.51	20.96	40°09'35.384"N	104°43'06.114"W	2.45	
6969.00	4.140	24.000	6871.14	-783.89	-783.60	21.51	40°09'35.402"N	104°43'06.107"W	7.39	
7013.00	7.370	35.640	6914.92	-780.21	-779.85	23.80	40°09'35.439"N	104°43'06.077"W	7.77	
7058.00	12.010	42.430	6959.26	-774.54	-774.04	28.64	40°09'35.497"N	104°43'06.015"W	10.60	
7103.00	17.310	43.220	7002.78	-766.41	-765.70	36.39	40°09'35.579"N	104°43'05.915"W	11.79	
7148.00	21.900	40.600	7045.16	-755.43	-754.45	46.44	40°09'35.691"N	104°43'05.786"W	10.38	
7195.00	26.830	37.210	7087.97	-740.66	-739.34	58.57	40°09'35.840"N	104°43'05.630"W	10.90	
7240.00	31.480	28.640	7127.27	-722.57	-720.92	70.35	40°09'36.022"N	104°43'05.478"W	13.86	
7285.00	38.610	17.620	7164.13	-699.10	-697.17	80.26	40°09'36.257"N	104°43'05.350"W	21.13	
7330.00	47.520	10.790	7196.99	-669.55	-667.41	87.63	40°09'36.551"N	104°43'05.255"W	22.33	
7375.00	53.110	8.390	7225.71	-635.59	-633.28	93.37	40°09'36.888"N	104°43'05.181"W	13.08	
7420.00	55.040	5.480	7252.12	-599.55	-597.11	97.76	40°09'37.245"N	104°43'05.125"W	6.77	
7465.00	57.790	1.830	7277.02	-562.23	-559.71	100.13	40°09'37.615"N	104°43'05.094"W	9.11	
7510.00	60.430	357.520	7300.12	-523.64	-521.11	99.89	40°09'37.996"N	104°43'05.097"W	10.10	
7555.00	64.100	354.050	7321.07	-483.87	-481.41	96.94	40°09'38.389"N	104°43'05.135"W	10.63	
7600.00	69.140	352.470	7338.92	-442.75	-440.40	92.09	40°09'38.794"N	104°43'05.198"W	11.65	
7645.00	73.630	354.700	7353.28	-400.27	-398.04	87.33	40°09'39.213"N	104°43'05.259"W	11.03	
7690.00	77.760	354.080	7364.40	-356.78	-354.65	83.07	40°09'39.641"N	104°43'05.314"W	9.27	
7735.00	80.460	354.660	7372.90	-312.71	-310.68	78.74	40°09'40.076"N	104°43'05.370"W	6.13	
7780.00	82.770	352.370	7379.46	-268.36	-266.45	73.71	40°09'40.513"N	104°43'05.435"W	7.19	

REFERENCE WELLPATH IDENTIFICATION				
Operator	KERR-MCGEE OIL & GAS ONSHORE LP		Slot	SLOT#21 DOLPH 1C-1HZ (661'FSL & 725'FEL, SEC.1)
Area	COLORADO		Well	DOLPH 1C-1HZ
Field	WELD COUNTY (KERR MCGEE)		Wellbore	DOLPH 1C-1HZ AWB
Facility	SEC.01-T2N-R66W			

WELLPATH DATA (141 stations) † = interpolated/extrapolated station

MD [ft]	Inclination [°]	Azimuth [°]	TVD [ft]	Vert Sect [ft]	North [ft]	East [ft]	Latitude	Longitude	DLS [°/100ft]	Comments
7815.00	85.900	354.400	7382.92	-233.67	-231.86	69.70	40°09'40.855"N	104°43'05.486"W	10.64	
7846.00†	86.552	354.299	7384.96	-202.82	-201.08	66.65	40°09'41.159"N	104°43'05.526"W	2.13	7" Casing Point
7901.00	87.710	354.120	7387.71	-148.04	-146.43	61.11	40°09'41.699"N	104°43'05.597"W	2.13	
7991.00	88.050	354.530	7391.04	-58.33	-56.93	52.21	40°09'42.583"N	104°43'05.711"W	0.59	
8081.00	88.430	355.010	7393.80	31.44	32.65	44.01	40°09'43.469"N	104°43'05.817"W	0.68	
8171.00	89.530	354.800	7395.41	121.25	122.28	36.02	40°09'44.354"N	104°43'05.920"W	1.24	
8261.00	89.500	355.600	7396.17	211.11	211.96	28.49	40°09'45.241"N	104°43'06.017"W	0.89	
8351.00	89.900	355.260	7396.64	300.98	301.67	21.32	40°09'46.127"N	104°43'06.109"W	0.58	
8441.00	90.150	354.170	7396.60	390.79	391.29	13.03	40°09'47.013"N	104°43'06.216"W	1.24	
8531.00	90.120	353.450	7396.39	480.49	480.76	3.33	40°09'47.897"N	104°43'06.341"W	0.80	
8621.00	89.560	353.770	7396.64	570.17	570.20	-6.69	40°09'48.781"N	104°43'06.470"W	0.72	
8711.00	89.590	354.360	7397.31	659.91	659.72	-15.99	40°09'49.665"N	104°43'06.590"W	0.66	
8801.00	89.440	355.420	7398.07	749.73	749.36	-24.01	40°09'50.551"N	104°43'06.693"W	1.19	
8891.00	89.930	357.010	7398.56	839.66	839.16	-29.95	40°09'51.439"N	104°43'06.770"W	1.85	
8981.00	91.210	359.280	7397.67	929.65	929.10	-32.86	40°09'52.327"N	104°43'06.807"W	2.90	
9071.00	91.660	359.670	7395.41	1019.60	1019.06	-33.69	40°09'53.216"N	104°43'06.818"W	0.66	
9161.00	92.120	359.330	7392.45	1109.54	1109.01	-34.47	40°09'54.105"N	104°43'06.828"W	0.64	
9251.00	90.870	359.750	7390.10	1199.49	1198.98	-35.20	40°09'54.994"N	104°43'06.837"W	1.47	
9342.00	89.620	358.720	7389.71	1290.48	1289.96	-36.41	40°09'55.893"N	104°43'06.853"W	1.78	
9432.00	89.060	357.880	7390.75	1380.47	1379.92	-39.08	40°09'56.782"N	104°43'06.887"W	1.12	
9522.00	88.330	357.370	7392.80	1470.44	1469.82	-42.81	40°09'57.671"N	104°43'06.935"W	0.99	
9612.00	89.130	357.820	7394.79	1560.40	1559.71	-46.58	40°09'58.559"N	104°43'06.984"W	1.02	
9702.00	89.380	357.870	7395.96	1650.39	1649.64	-49.97	40°09'59.448"N	104°43'07.028"W	0.28	
9792.00	89.620	358.050	7396.75	1740.38	1739.58	-53.17	40°10'00.337"N	104°43'07.069"W	0.33	
9882.00	90.180	357.560	7396.90	1830.38	1829.51	-56.62	40°10'01.225"N	104°43'07.113"W	0.83	
9972.00	89.090	357.980	7397.48	1920.37	1919.44	-60.12	40°10'02.114"N	104°43'07.158"W	1.30	
10062.00	90.120	357.830	7398.10	2010.36	2009.38	-63.41	40°10'03.003"N	104°43'07.201"W	1.16	
10144.00	90.780	358.500	7397.45	2092.36	2091.33	-66.04	40°10'03.813"N	104°43'07.235"W	1.15	
10234.00	91.440	357.910	7395.71	2182.34	2181.27	-68.85	40°10'04.701"N	104°43'07.271"W	0.98	
10324.00	90.850	357.820	7393.91	2272.31	2271.19	-72.21	40°10'05.590"N	104°43'07.314"W	0.66	
10414.00	89.870	358.200	7393.34	2362.31	2361.13	-75.33	40°10'06.479"N	104°43'07.354"W	1.17	
10505.00	89.650	358.590	7393.73	2453.31	2452.10	-77.88	40°10'07.378"N	104°43'07.387"W	0.49	
10595.00	89.560	357.800	7394.35	2543.30	2542.05	-80.72	40°10'08.267"N	104°43'07.424"W	0.88	
10685.00	89.280	357.340	7395.26	2633.29	2631.96	-84.53	40°10'09.155"N	104°43'07.473"W	0.60	
10775.00	89.000	357.720	7396.61	2723.27	2721.87	-88.41	40°10'10.044"N	104°43'07.523"W	0.52	
10865.00	89.560	358.930	7397.74	2813.26	2811.82	-91.04	40°10'10.933"N	104°43'07.557"W	1.48	
10955.00	90.530	359.740	7397.67	2903.25	2901.81	-92.08	40°10'11.822"N	104°43'07.570"W	1.40	
11045.00	90.180	357.740	7397.11	2993.24	2991.79	-94.06	40°10'12.711"N	104°43'07.596"W	2.26	
11135.00	91.950	358.980	7395.44	3083.22	3081.73	-96.64	40°10'13.600"N	104°43'07.629"W	2.40	
11225.00	91.510	358.520	7392.72	3173.17	3171.67	-98.60	40°10'14.489"N	104°43'07.654"W	0.71	
11315.00	91.260	358.410	7390.55	3263.15	3261.61	-101.01	40°10'15.377"N	104°43'07.685"W	0.30	
11405.00	90.930	359.100	7388.83	3353.13	3351.57	-102.97	40°10'16.266"N	104°43'07.710"W	0.85	
11495.00	90.990	358.850	7387.32	3443.11	3441.54	-104.58	40°10'17.155"N	104°43'07.731"W	0.29	
11585.00	90.920	358.840	7385.82	3533.10	3531.51	-106.39	40°10'18.045"N	104°43'07.755"W	0.08	
11675.00	90.550	359.740	7384.66	3623.08	3621.49	-107.51	40°10'18.934"N	104°43'07.769"W	1.08	

REFERENCE WELLPATH IDENTIFICATION				
Operator	KERR-MCGEE OIL & GAS ONSHORE LP		Slot	SLOT#21 DOLPH 1C-1HZ (661'FSL & 725'FEL, SEC.1)
Area	COLORADO		Well	DOLPH 1C-1HZ
Field	WELD COUNTY (KERR MCGEE)		Wellbore	DOLPH 1C-1HZ AWB
Facility	SEC.01-T2N-R66W			

WELLPATH DATA (141 stations)										
MD [ft]	Inclination [°]	Azimuth [°]	TVD [ft]	Vert Sect [ft]	North [ft]	East [ft]	Latitude	Longitude	DLS [°/100ft]	Comments
11765.00	89.750	357.980	7384.43	3713.07	3711.47	-109.30	40°10'19.823"N	104°43'07.792"W	2.15	
11855.00	89.690	358.370	7384.87	3803.07	3801.43	-112.16	40°10'20.712"N	104°43'07.829"W	0.44	
11945.00	89.690	358.100	7385.35	3893.07	3891.38	-114.93	40°10'21.601"N	104°43'07.865"W	0.30	
12034.00	89.410	357.580	7386.05	3982.06	3980.31	-118.29	40°10'22.480"N	104°43'07.908"W	0.66	
12149.00	89.190	357.470	7387.46	4097.04	4095.20	-123.25	40°10'23.615"N	104°43'07.972"W	0.21	Last BHI MWD+IFR Surveys
12199.00	89.190	357.470	7388.17	4147.02	4145.15	-125.46	40°10'24.108"N	104°43'08.000"W	0.00	Projection to Bit

HOLE & CASING SECTIONS - Ref Wellbore: DOLPH 1C-1HZ AWB Ref Wellpath: DOLPH 1C-1HZ AWP										
String/Diameter	Start MD [ft]	End MD [ft]	Interval [ft]	Start TVD [ft]	End TVD [ft]	Start N/S [ft]	Start E/W [ft]	End N/S [ft]	End E/W [ft]	
13.5in Open Hole	13.00	1427.00	1414.00	13.00	1426.98	0.00	0.00	-6.15	-3.05	
9.625in Casing Surface	13.00	1417.00	1404.00	13.00	1416.98	0.00	0.00	-6.13	-2.90	
8.75in Open Hole	1427.00	7856.00	6429.00	1426.98	7385.54	-6.15	-3.05	-191.14	65.66	
7in Casing Intermediate	13.00	7846.00	7833.00	13.00	7384.96	0.00	0.00	-201.08	66.65	
6.125in Open Hole	7856.00	12199.00	4343.00	7385.54	7388.17	-191.14	65.66	4145.15	-125.46	

TARGETS										
Name	MD [ft]	TVD [ft]	North [ft]	East [ft]	Grid East [US ft]	Grid North [US ft]	Latitude	Longitude	Shape	
DOLPH SECTION 1 LINES		6996.00	0.40	30.20	3218464.13	1302817.57	40°09'43.150"N	104°43'05.995"W	polygon	
DOLPH 1C-1HZ BHL (460'FNL & 825'FEL, SEC.01) REV-2		7396.00	4170.84	-100.14	3218297.04	1306986.51	40°10'24.362"N	104°43'07.674"W	point	
DOLPH 1C-1HZ BHL (460'FNL & 850'FEL, SEC.01) REV-3		7396.00	4170.84	-125.14	3218272.05	1306986.29	40°10'24.362"N	104°43'07.996"W	point	
DOLPH 1C-1HZ BHL ON PLAT (460'FNL & 795'FEL, SEC.01) REV-1		7396.00	4170.84	-70.14	3218327.04	1306986.77	40°10'24.362"N	104°43'07.288"W	point	
DOLPH 1C-1HZ LANDBOX		7446.00	0.00	0.00	3218433.93	1302816.90	40°09'43.146"N	104°43'06.384"W	polygon	

WELLPATH COMPOSITION - Ref Wellbore: DOLPH 1C-1HZ AWB Ref Wellpath: DOLPH 1C-1HZ AWP				
Start MD [ft]	End MD [ft]	Positional Uncertainty Model	Log Name/Comment	Wellbore
13.00	1338.00	Generic gyro - continuous (Standard)	MS ENERGY GYRO SURVEYS <113-1338>	DOLPH 1C-1HZ AWB
1338.00	7815.00	NaviTrak (MAGCORR,IFR)	BHI MWD+IFR SURVEYS 8 3/4" HOLE <1446-7815>	DOLPH 1C-1HZ AWB
7815.00	12149.00	NaviTrak (MAGCORR,IFR)	BHI MWD+IFR SURVEYS 6 1/8" HOLE <7901-12149>	DOLPH 1C-1HZ AWB
12149.00	12199.00	Blind Drilling (std)	Projection to bit	DOLPH 1C-1HZ AWB

REFERENCE WELLPATH IDENTIFICATION			
Operator	KERR-MCGEE OIL & GAS ONSHORE LP	Slot	SLOT#21 DOLPH 1C-1HZ (661'FSL & 725'FEL, SEC.1)
Area	COLORADO	Well	DOLPH 1C-1HZ
Field	WELD COUNTY (KERR MCGEE)	Wellbore	DOLPH 1C-1HZ AWP
Facility	SEC.01-T2N-R66W		

WELLPATH COMMENTS				
MD [ft]	Inclination [°]	Azimuth [°]	TVD [ft]	Comment
13.00	0.000	152.220	13.00	Tie-On
113.00	0.310	152.220	113.00	Begin GYRO Surveys
1338.00	0.260	205.210	1337.98	Tie-Into GYRO Surveys
1446.00	1.070	264.090	1445.97	Begin BHI MWD+IFR Surveys
7846.00	86.552	354.299	7384.96	7" Casing Point
12149.00	89.190	357.470	7387.46	Last BHI MWD+IFR Surveys
12199.00	89.190	357.470	7388.17	Projection to Bit