

Noble Energy, Inc

Weld County, CO (NAD 83)

Sec 29, T6N-R62W (Wells Ranch AE30 Pad)

Wells Ranch AE30-63-1AHNA

Wellbore #1

Design: OH

Standard Survey Report

26 May, 2014

IDS

Survey Report

Company:	Noble Energy, Inc	Local Co-ordinate Reference:	Well Wells Ranch AE30-63-1AHNA
Project:	Weld County, CO (NAD 83)	TVD Reference:	Well @ 4776.0usft (H&P 277)
Site:	Sec 29, T6N-R62W (Wells Ranch AE30 Pad)	MD Reference:	Well @ 4776.0usft (H&P 277)
Well:	Wells Ranch AE30-63-1AHNA	North Reference:	Grid
Wellbore:	Wellbore #1	Survey Calculation Method:	Minimum Curvature
Design:	OH	Database:	EDM 5000.1 Single User Db

Project	Weld County, CO (NAD 83)		
Map System:	US State Plane 1983	System Datum:	Mean Sea Level
Geo Datum:	North American Datum 1983		
Map Zone:	Colorado Northern Zone		

Site		Sec 29, T6N-R62W (Wells Ranch AE30 Pad)			
Site Position:		Northing:	1,410,139.62 usft	Latitude:	40° 27' 12.960 N
From:	Lat/Long	Easting:	3,318,293.89 usft	Longitude:	104° 21' 22.392 W
Position Uncertainty:	0.0 usft	Slot Radius:	13-3/16 "	Grid Convergence:	0.74 °

Well	Wells Ranch AE30-63-1AHNA					
Well Position	+N-S	0.0 usft	Northing:	1,409,990.23 usft	Latitude:	40° 27' 11.484 N
	+E-W	0.0 usft	Easting:	3,318,293.03 usft	Longitude:	104° 21' 22.428 W
Position Uncertainty		0.0 usft	Wellhead Elevation:	0.0 usft	Ground Level:	4,752.0 usft

Wellbore	Wellbore #1				
Magnetics	Model Name	Sample Date	Declination (°)	Dip Angle (°)	Field Strength (nT)
	IGRF2010	4/10/2014	8.27	67.06	52,905

Design	OH				
Audit Notes:					
Version:	1.0	Phase:	ACTUAL	Tie On Depth:	0.0
Vertical Section:	Depth From (TVD) (usft)	+N-S (usft)	+E-W (usft)	Direction (°)	
	0.0	0.0	0.0	269.87	

Survey Program	Date	5/26/2014			
From (usft)	To (usft)	Survey (Wellbore)	Tool Name	Description	
290.0	632.0	Surface (Wellbore #1)	Flexi-Shot	VES Flexi-Shot Tool	
729.0	6,720.0	Intermediate (Wellbore #1)	MWD	MWD - Standard	
6,826.0	11,873.0	Lateral (Wellbore #1)	Sperry - MWD+IFR1+MS_	Fixed:v2:Rockies, crustal dec + 3-axis correction	

Survey									
Measured Depth (usft)	Inclination (°)	Azimuth (°)	Vertical Depth (usft)	+N-S (usft)	+E-W (usft)	Vertical Section (usft)	Dogleg Rate (°/100usft)	Build Rate (°/100usft)	Turn Rate (°/100usft)
0.0	0.00	0.00	0.0	0.0	0.0	0.0	0.00	0.00	0.00
290.0	0.60	36.42	290.0	1.2	0.9	-0.9	0.21	0.21	0.00
632.0	0.20	79.22	632.0	2.8	2.6	-2.6	0.14	-0.12	12.51
729.0	0.62	3.29	729.0	3.3	2.7	-2.8	0.62	0.43	-78.28
First MWD									
823.0	0.97	7.07	823.0	4.6	2.9	-2.9	0.38	0.37	4.02
918.0	1.06	2.94	918.0	6.3	3.0	-3.0	0.12	0.09	-4.35
1,012.0	1.06	7.33	1,011.9	8.0	3.2	-3.2	0.09	0.00	4.67
1,107.0	0.88	4.08	1,106.9	9.6	3.3	-3.4	0.20	-0.19	-3.42

IDS Survey Report

Company:	Noble Energy, Inc	Local Co-ordinate Reference:	Well Wells Ranch AE30-63-1AHNA
Project:	Weld County, CO (NAD 83)	TVD Reference:	Well @ 4776.0usft (H&P 277)
Site:	Sec 29, T6N-R62W (Wells Ranch AE30 Pad)	MD Reference:	Well @ 4776.0usft (H&P 277)
Well:	Wells Ranch AE30-63-1AHNA	North Reference:	Grid
Wellbore:	Wellbore #1	Survey Calculation Method:	Minimum Curvature
Design:	OH	Database:	EDM 5000.1 Single User Db

Survey									
Measured Depth (usft)	Inclination (°)	Azimuth (°)	Vertical Depth (usft)	+N/-S (usft)	+E/-W (usft)	Vertical Section (usft)	Dogleg Rate (°/100usft)	Build Rate (°/100usft)	Turn Rate (°/100usft)
1,202.0	1.23	3.46	1,201.9	11.4	3.5	-3.5	0.37	0.37	-0.65
1,297.0	1.49	16.47	1,296.9	13.6	3.9	-3.9	0.42	0.27	13.69
1,392.0	1.32	17.35	1,391.9	15.8	4.5	-4.6	0.18	-0.18	0.93
1,486.0	1.23	9.27	1,485.8	17.8	5.0	-5.1	0.21	-0.10	-8.60
1,580.0	1.41	354.24	1,579.8	20.0	5.1	-5.1	0.41	0.19	-15.99
1,675.0	1.23	19.02	1,674.8	22.1	5.3	-5.3	0.62	-0.19	26.08
1,770.0	1.06	351.60	1,769.8	23.9	5.5	-5.5	0.60	-0.18	-28.86
1,864.0	1.67	7.16	1,863.7	26.2	5.5	-5.6	0.75	0.65	16.55
1,959.0	4.31	337.71	1,958.6	30.8	4.4	-4.4	3.13	2.78	-31.00
2,054.0	6.86	329.80	2,053.2	39.0	0.1	-0.2	2.80	2.68	-8.33
2,149.0	7.47	313.89	2,147.4	48.2	-7.2	7.1	2.18	0.64	-16.75
2,243.0	9.23	309.59	2,240.4	57.3	-17.4	17.2	1.99	1.87	-4.57
2,338.0	10.82	316.97	2,334.0	68.7	-29.3	29.2	2.15	1.67	7.77
2,433.0	9.85	318.82	2,427.4	81.3	-40.8	40.6	1.08	-1.02	1.95
2,527.0	11.52	313.19	2,519.8	93.8	-52.9	52.7	2.09	1.78	-5.99
2,622.0	11.34	313.02	2,612.9	106.6	-66.7	66.4	0.19	-0.19	-0.18
2,716.0	10.90	316.00	2,705.1	119.3	-79.6	79.3	0.77	-0.47	3.17
2,811.0	10.38	317.76	2,798.5	132.1	-91.6	91.3	0.65	-0.55	1.85
2,905.0	8.35	309.15	2,891.3	142.7	-102.6	102.2	2.62	-2.16	-9.16
3,000.0	6.07	298.78	2,985.5	149.5	-112.3	112.0	2.75	-2.40	-10.92
3,094.0	4.04	281.73	3,079.1	152.5	-119.9	119.6	2.66	-2.16	-18.14
3,188.0	2.11	224.07	3,173.0	152.0	-124.4	124.0	3.63	-2.05	-61.34
3,283.0	3.17	161.23	3,267.9	148.2	-124.7	124.4	3.05	1.12	-66.15
3,378.0	2.73	176.52	3,362.8	143.5	-123.8	123.4	0.94	-0.46	16.09
3,472.0	1.85	146.64	3,456.7	140.0	-122.8	122.5	1.55	-0.94	-31.79
3,567.0	1.67	163.60	3,551.7	137.4	-121.5	121.2	0.58	-0.19	17.85
3,661.0	1.58	150.51	3,645.7	134.9	-120.5	120.2	0.41	-0.10	-13.93
3,756.0	1.76	165.54	3,740.6	132.4	-119.5	119.2	0.50	0.19	15.82
3,850.0	1.67	161.32	3,834.6	129.7	-118.7	118.4	0.16	-0.10	-4.49
3,945.0	2.46	71.32	3,929.5	129.0	-116.3	116.1	3.13	0.83	-94.74
4,039.0	2.02	79.75	4,023.5	130.0	-112.8	112.5	0.58	-0.47	8.97
4,134.0	1.23	94.43	4,118.4	130.2	-110.1	109.8	0.93	-0.83	15.45
4,228.0	0.97	105.24	4,212.4	129.9	-108.4	108.1	0.35	-0.28	11.50
4,322.0	0.88	107.97	4,306.4	129.5	-106.9	106.6	0.11	-0.10	2.90
4,417.0	0.88	66.31	4,401.4	129.5	-105.5	105.3	0.66	0.00	-43.85
4,511.0	0.70	79.23	4,495.4	129.9	-104.3	104.0	0.27	-0.19	13.74
4,606.0	1.06	114.38	4,590.4	129.7	-102.9	102.7	0.67	0.38	37.00
4,700.0	0.79	95.57	4,684.4	129.3	-101.5	101.2	0.43	-0.29	-20.01
4,795.0	0.79	88.37	4,779.3	129.2	-100.2	99.9	0.10	0.00	-7.58
4,889.0	0.35	85.91	4,873.3	129.2	-99.3	99.0	0.47	-0.47	-2.62
4,984.0	0.70	116.32	4,968.3	129.0	-98.5	98.2	0.46	0.37	32.01
5,079.0	0.53	125.81	5,063.3	128.5	-97.6	97.3	0.21	-0.18	9.99
5,174.0	0.62	169.93	5,158.3	127.7	-97.1	96.9	0.46	0.09	46.44

IDS

Survey Report

Company:	Noble Energy, Inc	Local Co-ordinate Reference:	Well Wells Ranch AE30-63-1AHNA
Project:	Weld County, CO (NAD 83)	TVD Reference:	Well @ 4776.0usft (H&P 277)
Site:	Sec 29, T6N-R62W (Wells Ranch AE30 Pad)	MD Reference:	Well @ 4776.0usft (H&P 277)
Well:	Wells Ranch AE30-63-1AHNA	North Reference:	Grid
Wellbore:	Wellbore #1	Survey Calculation Method:	Minimum Curvature
Design:	OH	Database:	EDM 5000.1 Single User Db

Survey									
Measured Depth (usft)	Inclination (°)	Azimuth (°)	Vertical Depth (usft)	+N/-S (usft)	+E/-W (usft)	Vertical Section (usft)	Dogleg Rate (°/100usft)	Build Rate (°/100usft)	Turn Rate (°/100usft)
5,268.0	1.23	183.99	5,252.3	126.2	-97.1	96.8	0.69	0.65	14.96
5,363.0	1.06	290.43	5,347.3	125.5	-98.0	97.7	1.93	-0.18	112.04
5,458.0	1.14	289.29	5,442.3	126.1	-99.7	99.5	0.09	0.08	-1.20
5,553.0	1.76	272.76	5,537.3	126.5	-102.1	101.8	0.78	0.65	-17.40
5,648.0	1.32	260.28	5,632.2	126.4	-104.6	104.3	0.58	-0.46	-13.14
5,743.0	0.97	279.71	5,727.2	126.4	-106.5	106.2	0.55	-0.37	20.45
5,835.0	5.36	267.58	5,819.0	126.3	-111.5	111.3	4.80	4.77	-13.18
5,883.0	8.97	266.35	5,866.7	126.0	-117.5	117.2	7.53	7.52	-2.56
5,930.0	13.19	269.86	5,912.8	125.7	-126.5	126.3	9.09	8.98	7.47
5,977.0	15.56	269.60	5,958.3	125.7	-138.2	137.9	5.04	5.04	-0.55
6,025.0	19.08	268.28	6,004.1	125.4	-152.5	152.2	7.38	7.33	-2.75
6,072.0	22.69	268.72	6,048.0	125.0	-169.2	169.0	7.69	7.68	0.94
6,119.0	27.26	269.69	6,090.6	124.7	-189.1	188.8	9.76	9.72	2.06
6,166.0	31.30	271.09	6,131.6	124.9	-212.1	211.8	8.72	8.60	2.98
6,214.0	34.21	270.92	6,172.0	125.3	-238.0	237.8	6.07	6.06	-0.35
6,261.0	38.95	271.97	6,209.7	126.0	-266.0	265.7	10.17	10.09	2.23
6,308.0	45.02	272.15	6,244.6	127.2	-297.4	297.1	12.92	12.91	0.38
6,356.0	50.83	272.85	6,276.8	128.7	-333.0	332.7	12.15	12.10	1.46
6,403.0	52.23	272.67	6,306.0	130.5	-369.8	369.5	2.99	2.98	-0.38
6,450.0	55.31	272.59	6,333.8	132.2	-407.6	407.3	6.55	6.55	-0.17
6,498.0	58.83	270.83	6,359.9	133.4	-447.9	447.6	7.95	7.33	-3.67
6,545.0	62.78	268.81	6,382.8	133.3	-488.9	488.6	9.20	8.40	-4.30
6,592.0	65.07	268.02	6,403.4	132.1	-531.1	530.8	5.10	4.87	-1.68
6,640.0	71.31	268.02	6,421.3	130.6	-575.6	575.3	13.00	13.00	0.00
6,687.0	78.44	268.63	6,433.5	129.3	-620.9	620.7	15.22	15.17	1.30
6,720.0	82.57	268.63	6,439.0	128.5	-653.5	653.2	12.52	12.52	0.00
6,775.0	84.66	268.57	6,445.1	127.2	-708.1	707.8	3.80	3.80	-0.10
7" @ 6775' MD / 6445' TVD / 1159' FSL & 646' FEL Sec 30									
6,826.0	86.60	268.52	6,449.0	125.9	-758.9	758.7	3.80	3.80	-0.10
6,921.0	88.06	268.95	6,453.4	123.8	-853.8	853.5	1.60	1.54	0.45
7,016.0	89.11	268.71	6,455.7	121.8	-948.8	948.5	1.13	1.11	-0.25
7,110.0	89.33	270.52	6,457.0	121.2	-1,042.7	1,042.5	1.94	0.23	1.93
7,205.0	90.54	270.80	6,457.1	122.3	-1,137.7	1,137.5	1.31	1.27	0.29
7,299.0	89.89	271.71	6,456.8	124.4	-1,231.7	1,231.4	1.19	-0.69	0.97
7,394.0	90.71	271.56	6,456.3	127.1	-1,326.7	1,326.4	0.88	0.86	-0.16
7,488.0	90.29	270.67	6,455.5	128.9	-1,420.7	1,420.4	1.05	-0.45	-0.95
7,583.0	89.29	268.89	6,455.8	128.5	-1,515.6	1,515.4	2.15	-1.05	-1.87
7,677.0	90.80	268.88	6,455.7	126.7	-1,609.6	1,609.3	1.61	1.61	-0.01
7,772.0	89.66	267.94	6,455.4	124.1	-1,704.6	1,704.3	1.56	-1.20	-0.99
7,866.0	86.87	266.94	6,458.2	119.9	-1,798.4	1,798.2	3.15	-2.97	-1.06
7,961.0	86.62	267.20	6,463.6	115.0	-1,893.2	1,892.9	0.38	-0.26	0.27
8,056.0	87.57	266.55	6,468.4	109.8	-1,987.9	1,987.6	1.21	1.00	-0.68
8,150.0	89.14	266.20	6,471.1	103.9	-2,081.7	2,081.4	1.71	1.67	-0.37
8,245.0	91.25	266.82	6,470.8	98.1	-2,176.5	2,176.3	2.31	2.22	0.65

IDS

Survey Report

Company:	Noble Energy, Inc	Local Co-ordinate Reference:	Well Wells Ranch AE30-63-1AHNA
Project:	Weld County, CO (NAD 83)	TVD Reference:	Well @ 4776.0usft (H&P 277)
Site:	Sec 29, T6N-R62W (Wells Ranch AE30 Pad)	MD Reference:	Well @ 4776.0usft (H&P 277)
Well:	Wells Ranch AE30-63-1AHNA	North Reference:	Grid
Wellbore:	Wellbore #1	Survey Calculation Method:	Minimum Curvature
Design:	OH	Database:	EDM 5000.1 Single User Db

Survey										
Measured Depth (usft)	Inclination (°)	Azimuth (°)	Vertical Depth (usft)	+N-S (usft)	+E-W (usft)	Vertical Section (usft)	Dogleg Rate (°/100usft)	Build Rate (°/100usft)	Turn Rate (°/100usft)	
8,339.0	91.71	267.99	6,468.4	93.9	-2,270.4	2,270.1	1.34	0.49	1.24	
8,434.0	91.04	269.45	6,466.1	91.7	-2,365.3	2,365.1	1.69	-0.71	1.54	
8,529.0	90.43	269.45	6,464.9	90.8	-2,460.3	2,460.1	0.64	-0.64	0.00	
8,623.0	88.72	268.66	6,465.6	89.3	-2,554.3	2,554.1	2.00	-1.82	-0.84	
8,718.0	89.01	268.41	6,467.4	86.9	-2,649.2	2,649.0	0.40	0.31	-0.26	
8,813.0	90.62	268.58	6,467.7	84.4	-2,744.2	2,744.0	1.70	1.69	0.18	
8,907.0	90.39	267.78	6,466.9	81.4	-2,838.1	2,837.9	0.89	-0.24	-0.85	
9,002.0	88.04	266.51	6,468.2	76.6	-2,933.0	2,932.8	2.81	-2.47	-1.34	
9,097.0	88.38	265.85	6,471.2	70.3	-3,027.7	3,027.6	0.78	0.36	-0.69	
9,191.0	89.06	266.03	6,473.3	63.7	-3,121.5	3,121.3	0.75	0.72	0.19	
9,286.0	89.82	264.46	6,474.2	55.8	-3,216.1	3,216.0	1.84	0.80	-1.65	
9,381.0	90.43	265.90	6,474.0	47.8	-3,310.8	3,310.7	1.65	0.64	1.52	
9,475.0	90.52	268.66	6,473.2	43.3	-3,404.7	3,404.6	2.94	0.10	2.94	
9,570.0	89.66	268.34	6,473.1	40.9	-3,499.6	3,499.6	0.97	-0.91	-0.34	
9,664.0	89.87	267.90	6,473.5	37.8	-3,593.6	3,593.5	0.52	0.22	-0.47	
9,759.0	89.90	266.66	6,473.6	33.3	-3,688.5	3,688.4	1.31	0.03	-1.31	
9,854.0	89.85	267.42	6,473.9	28.4	-3,783.4	3,783.3	0.80	-0.05	0.80	
9,948.0	89.72	267.60	6,474.2	24.3	-3,877.3	3,877.2	0.24	-0.14	0.19	
10,043.0	90.02	267.31	6,474.4	20.1	-3,972.2	3,972.1	0.44	0.32	-0.31	
10,137.0	89.90	266.61	6,474.5	15.1	-4,066.0	4,066.0	0.76	-0.13	-0.74	
10,232.0	89.37	267.50	6,475.1	10.2	-4,160.9	4,160.9	1.09	-0.56	0.94	
10,327.0	89.96	267.97	6,475.7	6.4	-4,255.8	4,255.8	0.79	0.62	0.49	
10,421.0	90.22	266.76	6,475.5	2.1	-4,349.7	4,349.7	1.32	0.28	-1.29	
10,516.0	89.83	266.69	6,475.5	-3.3	-4,444.6	4,444.6	0.42	-0.41	-0.07	
10,611.0	89.80	267.13	6,475.8	-8.4	-4,539.4	4,539.5	0.46	-0.03	0.46	
10,705.0	90.68	266.70	6,475.4	-13.5	-4,633.3	4,633.3	1.04	0.94	-0.46	
10,800.0	92.41	269.39	6,472.8	-16.7	-4,728.2	4,728.2	3.37	1.82	2.83	
10,895.0	93.55	269.07	6,467.9	-18.0	-4,823.1	4,823.1	1.25	1.20	-0.34	
10,989.0	93.91	269.24	6,461.8	-19.4	-4,916.9	4,916.9	0.42	0.38	0.18	
11,084.0	94.32	270.05	6,454.9	-20.0	-5,011.6	5,011.6	0.95	0.43	0.85	
11,179.0	93.92	270.89	6,448.1	-19.2	-5,106.4	5,106.4	0.98	-0.42	0.88	
11,273.0	88.48	271.48	6,446.1	-17.3	-5,200.3	5,200.3	5.82	-5.79	0.63	
11,367.0	88.08	270.85	6,449.0	-15.3	-5,294.2	5,294.2	0.79	-0.43	-0.67	
11,462.0	89.37	270.64	6,451.1	-14.1	-5,389.2	5,389.2	1.38	1.36	-0.22	
11,557.0	89.77	270.35	6,451.8	-13.3	-5,484.2	5,484.2	0.52	0.42	-0.31	
11,652.0	89.95	269.72	6,452.0	-13.2	-5,579.2	5,579.2	0.69	0.19	-0.66	
11,747.0	89.57	269.64	6,452.4	-13.8	-5,674.2	5,674.2	0.41	-0.40	-0.08	
11,803.0	90.65	270.70	6,452.3	-13.6	-5,730.2	5,730.2	2.70	1.93	1.89	
Last MWD @ 11803' MD / 6452' TVD										
11,873.0	90.65	270.70	6,451.5	-12.7	-5,800.2	5,800.2	0.00	0.00	0.00	
PTD @ 11873' MD / 6452' TVD / 1166' FSL & 384' FEL Sec 25										

IDS

Survey Report

Company:	Noble Energy, Inc	Local Co-ordinate Reference:	Well Wells Ranch AE30-63-1AHNA
Project:	Weld County, CO (NAD 83)	TVD Reference:	Well @ 4776.0usft (H&P 277)
Site:	Sec 29, T6N-R62W (Wells Ranch AE30 Pad)	MD Reference:	Well @ 4776.0usft (H&P 277)
Well:	Wells Ranch AE30-63-1AHNA	North Reference:	Grid
Wellbore:	Wellbore #1	Survey Calculation Method:	Minimum Curvature
Design:	OH	Database:	EDM 5000.1 Single User Db

Casing Points					
Measured Depth (usft)	Vertical Depth (usft)	Name	Casing Diameter (")	Hole Diameter (")	
6,775.0	6,445.1	7"	7	8-3/4	

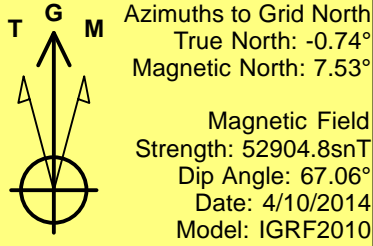
Design Annotations					
Measured Depth (usft)	Vertical Depth (usft)	Local Coordinates		Comment	
		+N/-S (usft)	+E/-W (usft)		
729.0	729.0	3.3	2.7	First MWD	
6,775.0	6,445.1	127.2	-708.1	7" @ 6775' MD / 6445' TVD / 1159' FSL & 646' FEL Sec 30	
11,803.0	6,452.3	-13.6	-5,730.2	Last MWD @ 11803' MD / 6452' TVD	
11,873.0	6,451.5	-12.7	-5,800.2	PTD @ 11873' MD / 6452' TVD / 1166' FSL & 384' FEL Sec 25	

Checked By: _____	Approved By: _____	Date: _____
-------------------	--------------------	-------------



Weld County, CO (NAD 83) Sec 29, T6N-R62W (Wells Ranch AE30 Pad) Wells Ranch AE30-63-1AHNA

H&P 277 Plan #1



CASING DETAILS

MD	TVD	Name	Size
6775.0	6445.1	7"	7"

SITE DETAILS: Sec 29, T6N-R62W (Wells Ranch AE30 Pad)

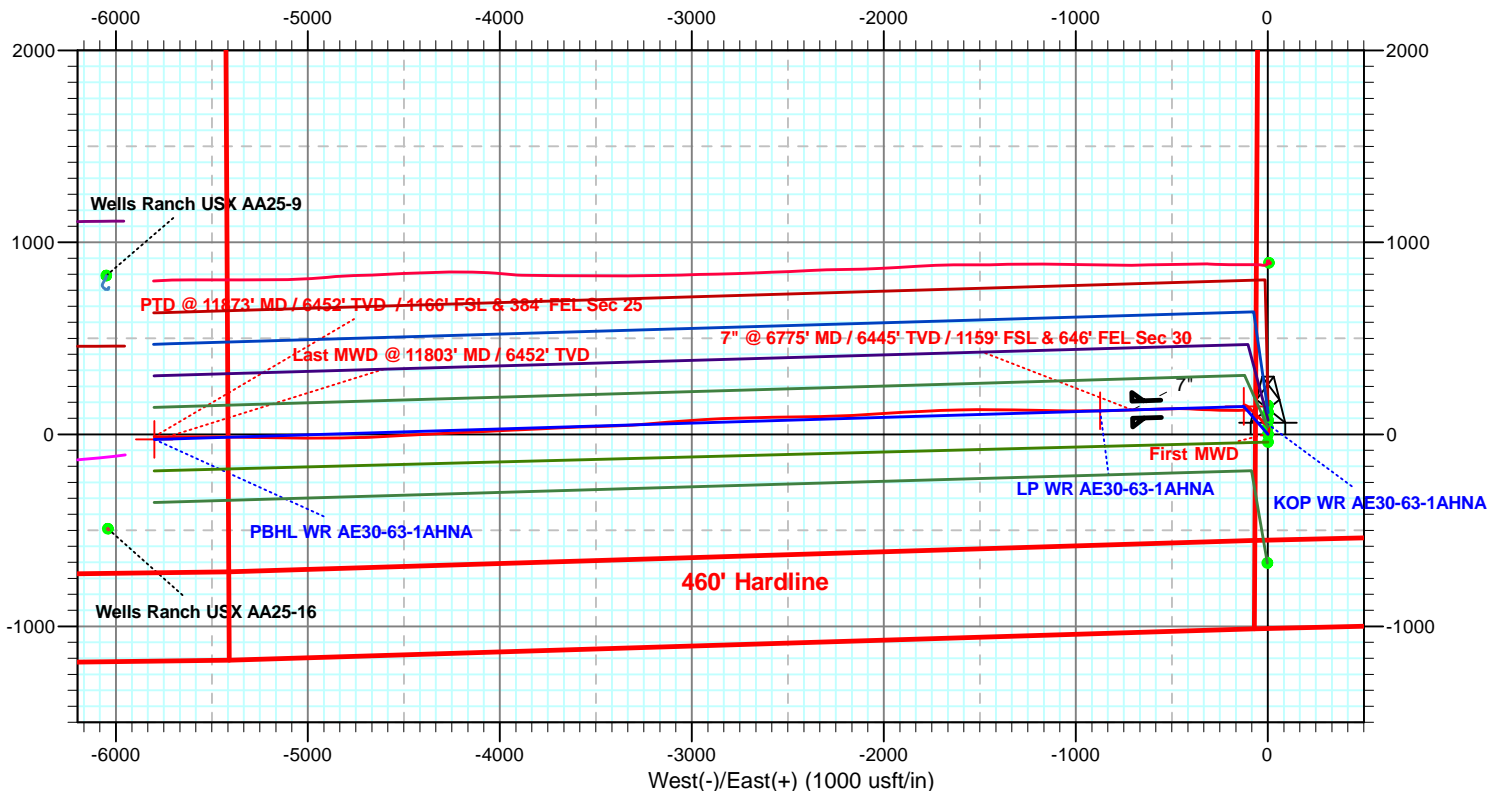
Site Centre Northing: 1410139.62
 Easting: 3318293.89
 Positional Uncertainty: 0.0
 Convergence: 0.74
 Local North: Grid

SECTION DETAILS

MD	Inc	Azi	TVD	+N-S	+E-W	Dleg	TFace	Vsect	Target
0.0	0.00	0.00	0.0	0.0	0.0	0.00	0.00	0.0	
2000.0	0.00	0.00	2000.0	0.0	0.0	0.00	0.00	0.0	
2599.8	12.00	319.24	2595.4	47.4	-40.8	2.00	319.24	40.6	
2919.0	12.00	319.24	2907.6	97.6	-84.2	0.00	0.00	83.7	
3518.7	0.00	0.00	3503.0	145.0	-125.0	2.00	180.00	124.3	
5827.7	0.00	0.00	5812.0	145.0	-125.0	0.00	0.00	124.3	KOP WR AE30-63-1AHNA
6772.2	85.00	268.27	6446.2	127.5	-705.9	9.00	268.27	705.3	
86822.2	85.00	268.27	6450.6	126.0	-755.7	0.00	0.00	755.1	
96939.8	89.70	268.27	6456.0	122.4	-873.1	4.00	-0.05	872.5	
101868.8	89.70	268.27	6481.4	-26.8	-5799.7	0.00	0.00	5799.8	PBHL WR AE30-63-1AHNA

WELL DETAILS: Wells Ranch AE30-63-1AHNA

		Ground Level: 4752.0			
+N-S	+E-W	Northing	Easting	Latitude	Longitude
0.0	0.0	1409990.23	3318293.03	40° 27' 11.484 N	104° 21' 22.428 W



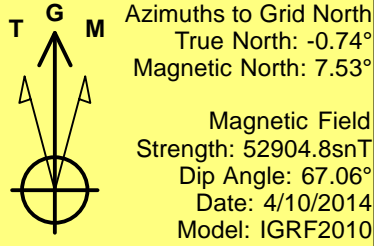
SHL @ 1010' FSL & 65' FWL Sec 29
 Actual 7" Csg @ 1159' FSL & 646' FEL Sec 30
 Actual BHL @ 1166' FSL & 384' FEL Sec 25





Weld County, CO (NAD 83) Sec 29, T6N-R62W (Wells Ranch AE30 Pad) Wells Ranch AE30-63-1AHNA H&P 277

Plan #1



ACTUAL CASING DETAILS

MD	TVD	Name	Size
6775.0	6445.1	7"	7

SITE DETAILS: Sec 29, T6N-R62W (Wells Ranch AE30 Pad)

Site Centre Northing: 1410139.62
Easting: 3318293.89
Positional Uncertainty: 0.0
Convergence: 0.74
Local North: Grid

SECTION DETAILS

MD	Inc	Azi	TVD	+N-S	+E-W	Dleg	TFace	VSeet	Target
0.0	0.00	0.00	0.0	0.0	0.0	0.00	0.00	0.0	
2000.0	0.00	0.00	2000.0	0.0	0.0	0.00	0.00	0.0	
2599.8	12.00	319.24	2595.4	47.4	-40.8	2.00	319.24	40.6	
2919.0	12.00	319.24	2907.6	97.6	-84.2	0.00	0.00	83.7	
3518.7	0.00	0.00	3503.0	145.0	-125.0	2.00	180.00	124.3	
5827.7	0.00	0.00	5812.0	145.0	-125.0	0.00	0.00	124.3	KOP WR AE30-63-1AHNA
6772.2	85.00	268.27	6446.2	127.5	-705.9	9.00	268.27	705.3	
6822.2	85.00	268.27	6450.6	126.0	-755.7	0.00	0.00	755.1	
6939.8	89.70	268.27	6456.0	122.4	-873.1	4.00	-0.05	872.5	
11868.8	89.70	268.27	6481.4	-26.8	-5799.7	0.00	0.00	5799.8	PBHL WR AE30-63-1AHNA

WELL DETAILS: Wells Ranch AE30-63-1AHNA

+N-S	+E-W	Northing	Easting	Latitude	Longitude
0.0	0.0409990.23	3318293.0340° 27'	11.484 104° 21'	22.428 W	

SHL @ 1010' FSL & 65' FWL Sec 29
Actual 7" Csg @ 1159' FSL & 646' FEL Sec 30
Actual BHL @ 1166' FSL & 384' FEL Sec 25

