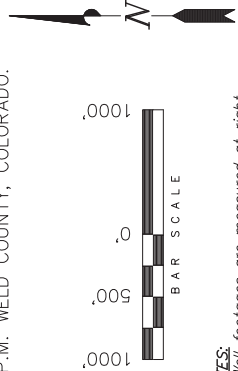


**GREAT WESTERN OIL & GAS COMPANY**

WELL LOCATION, BURR FD 23-219HN,  
LOCATED AS SHOWN IN THE SE 1/4  
SE 1/4 OF SECTION 24, T6N, R67W,  
6th P.M. WELD COUNTY, COLORADO.

TARGET BOTTOM HOLE, BURR FD 23-219HN,  
LOCATED AS SHOWN IN THE NW 1/4  
SW 1/4 OF SECTION 23, T6N, R67W,  
6th P.M. WELD COUNTY, COLORADO.



- NOTES:**
- Well footages are measured at right angles to the Section Lines.
  - Bearings are based on Global Positioning Satellite observations.
  - G.P.S. Operator: C. Stewart, (PDDP) = 1.2

**IMPROVEMENT NOTE:**  
See addendum to legal plat (Sheet 2a & 2b) for visible improvements within 500' of the proposed location.

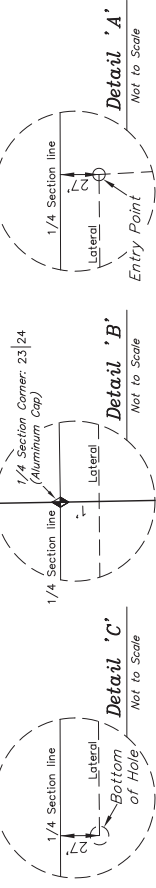
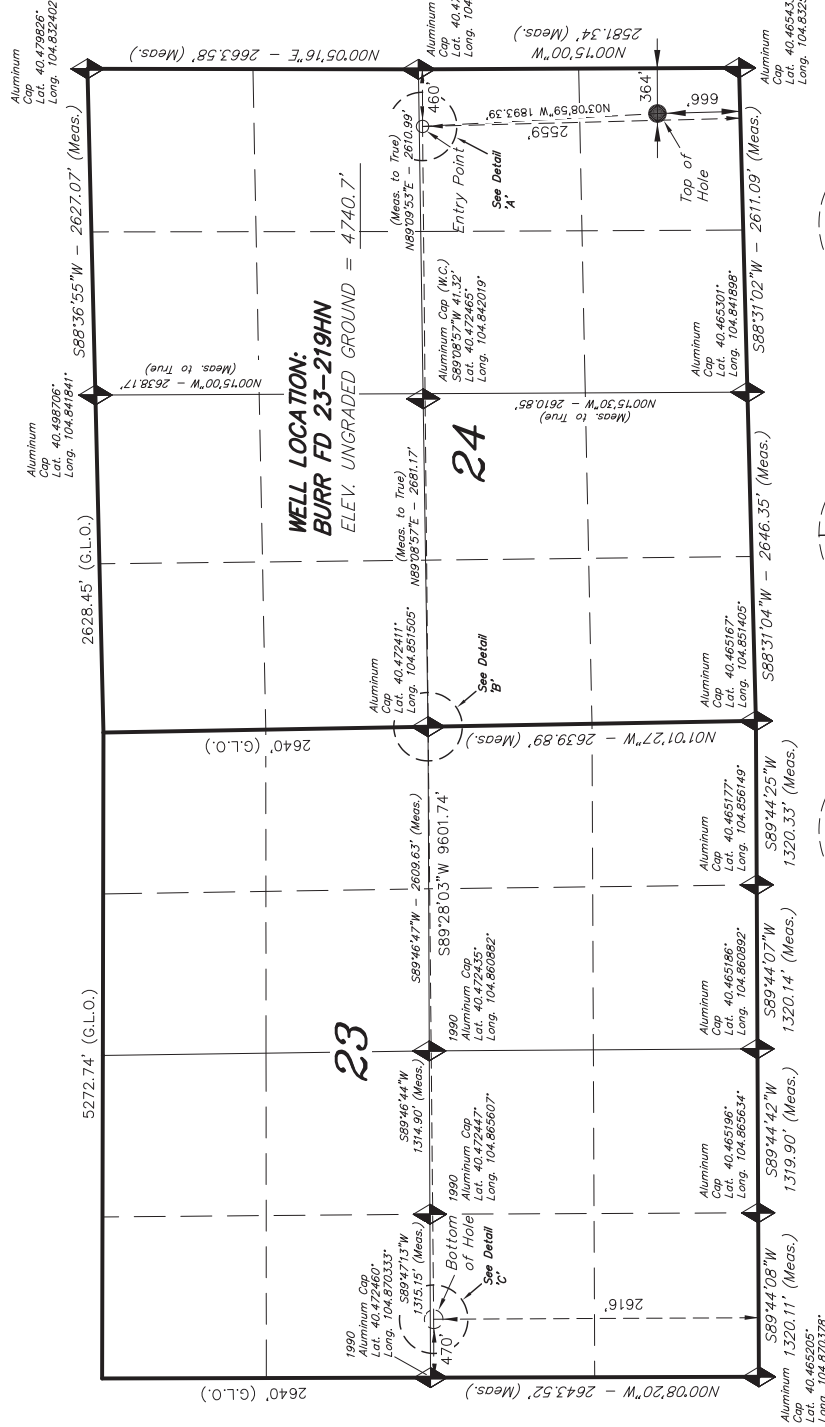
THIS IS TO CERTIFY THAT THE ABOVE PLAT WAS PREPARED FROM FIELD NOTES OF REALTY SURVEYS MADE BY ME OR UNDER MY SUPERVISION. THE LOCATION HAS BEEN STAKED ON THE GROUND AS SHOWN ON THE PLAT AND THAT THE SAME ARE TRUE AND CORRECT TO THE BEST OF MY KNOWLEDGE AND BELIEF. C.S. # 30125

REGISTERED LAND SURVEYOR  
REGISTRATION # 30125  
STATE OF COLORADO  
LAND SURVEYOR

**TRI STATE LAND SURVEYING & CONSULTING**  
180 NORTH VERNAL AVE. - VERNAL, UTAH 84078  
(435) 781-2501

DATE SURVEYED: 07-08-14	SURVEYED BY: C.S.	SHEET
DATE DRAWN: 07-13-14	DRAWN BY: R.V.C.	<b>1a</b>
REVISED: 08-21-14	M.W.	SCALE: 1" = 1000'

**T6N, R67W, 6th P.M.**



NAD 83 (SURFACE LOCATION)	NAD 83 (ENTRY POINT)	NAD 83 (BOTTOM HOLE LOCATION)
LATITUDE = 40.280205° (40.467243°)	LATITUDE = 40.282057° (40.472433°)	LATITUDE = 40.282057° (40.472431°)
LONGITUDE = 104.50175° (104.833819°)	LONGITUDE = 104.500929° (104.834142°)	LONGITUDE = 104.502071° (104.868645°)
NAD 27 (SURFACE LOCATION)	NAD 27 (ENTRY POINT)	NAD 27 (BOTTOM HOLE LOCATION)
LATITUDE = 40.250214° (40.467262°)	LATITUDE = 40.252085° (40.472452°)	LATITUDE = 40.252085° (40.472389°)
LONGITUDE = 104.483935° (104.833222°)	LONGITUDE = 104.500132° (104.833581°)	LONGITUDE = 104.502522° (104.868618°)

◆ = SECTION CORNERS LOCATED  
BASIS OF ELEV; Elevations are based on an N.G.S. OPUS Correction. LOCATION: LAT. 40°27'42.74" LONG. 104°51'11.32" (Tristate Aluminum Cap GW1) NAVD 88 Elev. 4760.86'