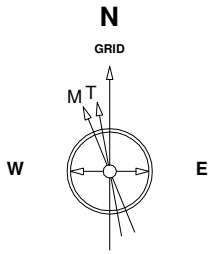


Great Western Operating Company, LLC

Location Colorado
Field Wattenberg
Installation Burr

Slot Slot #1
Well Burr FD 23-219HN
Wellbore Burr FD 23-219HN (PWB)

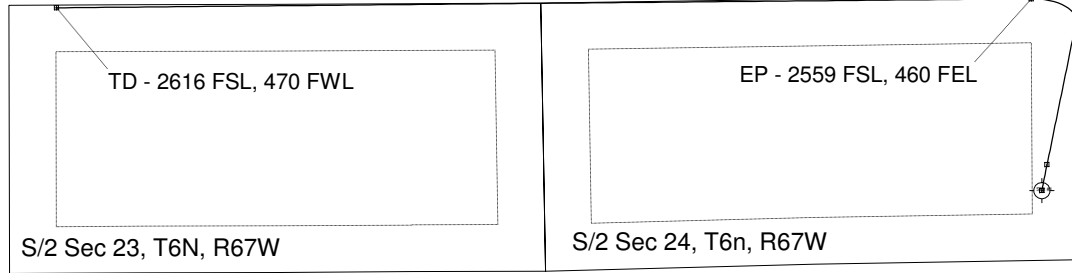
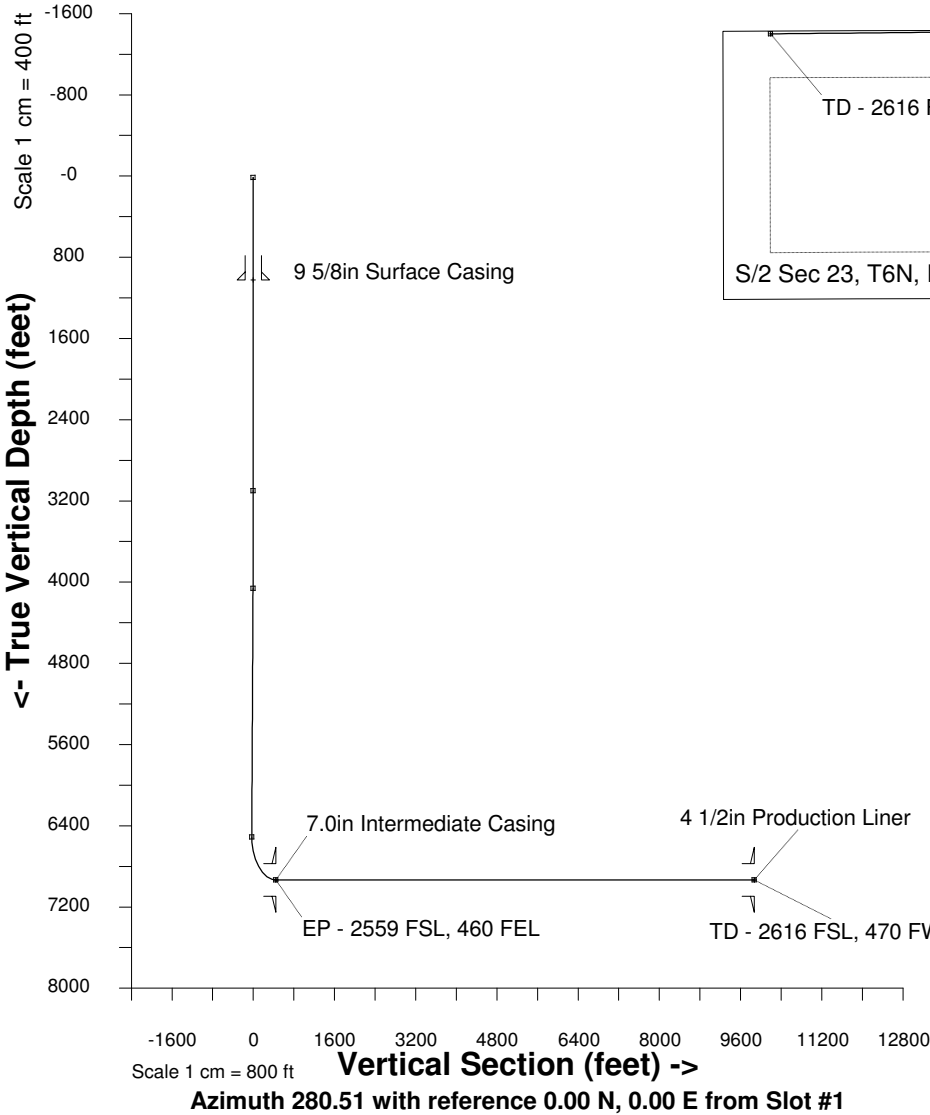


Scale 1 cm = 400 ft

East (feet) ->

-12000 -11200 -10400 -9600 -8800 -8000 -7200 -6400 -5600 -4800 -4000 -3200 -2400 -1600 -800 0 800 1600

20-Aug-2014
 IGRF Model [1900.0-2015.0] Dip: -29.73 deg Field: 32223.6 nT
 Magnetic North is 4.46 deg West of True North
 GRID North is 0.43 deg East of True North
 To correct azimuth from True to GRID subtract 0.43 deg
 To correct azimuth from Magnetic to GRID subtract 4.89 deg



3200
 2400
 1600
 800
 0
 -800
 -1600
 -2400

Scale 1 cm = 400 ft

<- North(feet)

WELL PROFILE DATA

Point	MD	Inc	Azi	TVD	North	East	deg/100ft	V. Sect
Tie on	16.20	0.00	0.00	16.20	0.00	0.00	0.00	0.00
KOP	3100.00	0.00	0.00	3100.00	0.00	0.00	0.00	0.00
End of Build	4107.93	30.24	11.51	4061.79	254.63	51.83	3.00	-4.51
End of Hold	6941.58	30.24	11.51	6509.90	1652.95	336.45	0.00	-29.25
Target EP - 2559 FSL	7680.26	90.00	269.47	6933.00	1890.07	-104.07	13.00	447.14
T.D. & Target TD - 2616	17282.33	90.00	269.47	6933.00	1800.90	-9705.72	0.00	9871.39

Created by admin
 Date plotted 21-Aug-2014
 Plot reference is Burr FD 23-219HN (PWB).
 Ref wellpath is Burr FD 23-219HN (PWP#1).
 Coordinates are in feet reference Slot #1.
 True Vertical Depths are reference Rig Datum.
 Measured Depths are reference Rig Datum.
 Rig Datum: Planned Datum #1
 Rig Datum to Mean Sea Level: 4759.00 ft.
 Plot North is aligned to GRID North.