

T10N, R57W, 6th P.M.

WHITING OIL & GAS CORP.

Well location, HORSETAIL #29G-3209A (SURFACE LOCATION), located as shown in the SW 1/4 NE 1/4 of Section 29, T10N, R57W, 6th P.M., Weld County, Colorado.

BASIS OF ELEVATION

SPOT ELEVATION LOCATED AT THE NORTHEAST CORNER OF SECTION 15, T9N, R58W, 6th P.M. TAKEN FROM THE GATEHOOK SPRING, QUADRANGLE, COLORADO, WELD COUNTY, 7.5 MINUTE QUAD (TOPOGRAPHIC MAP) PUBLISHED BY THE UNITED STATES DEPARTMENT OF THE INTERIOR, GEOLOGICAL SURVEY. SAID ELEVATION IS MARKED AS BEING 4679 FEET.

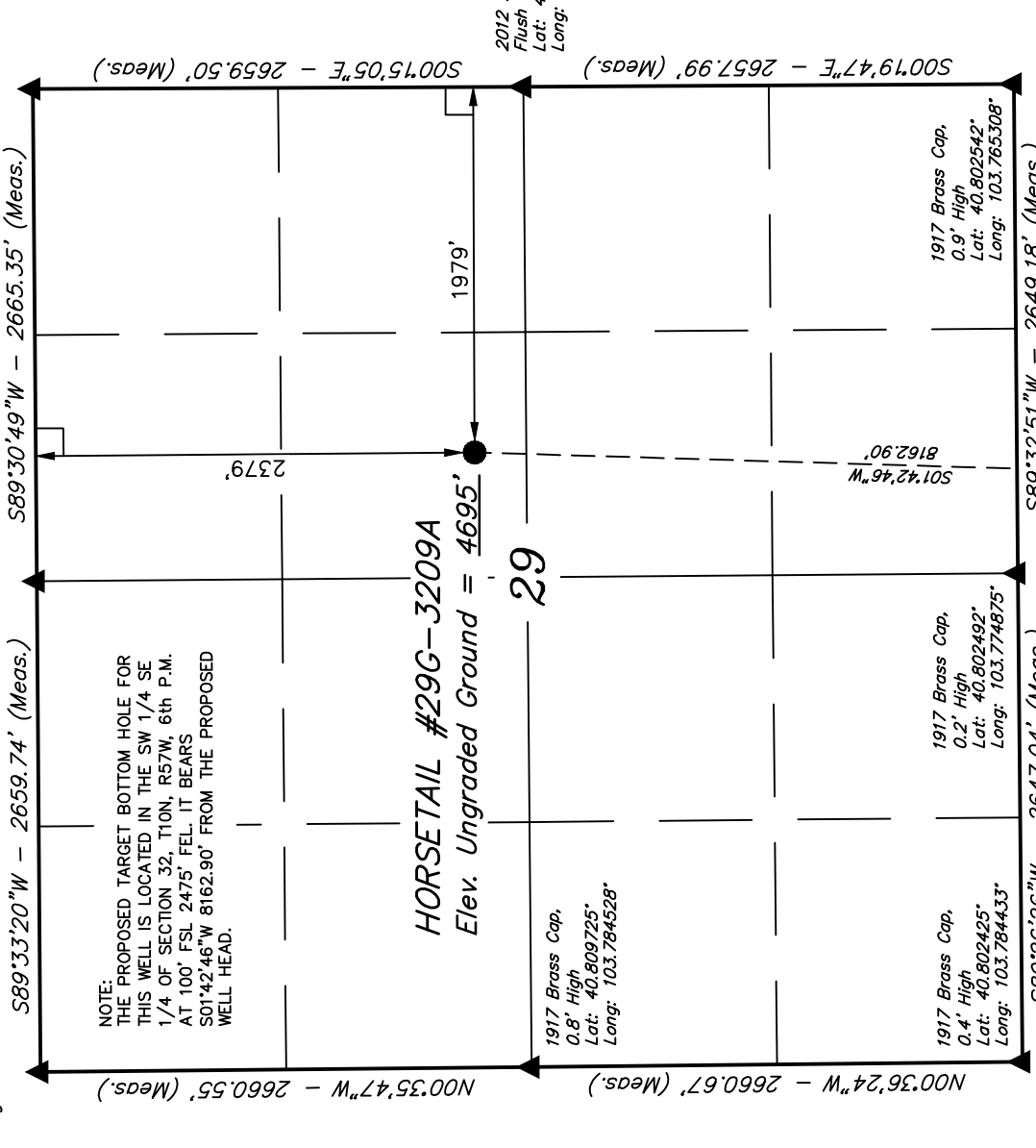
BASIS OF BEARINGS

BASIS OF BEARINGS IS A G.P.S. OBSERVATION.

1917 Brass Cap,
Flush with Ground
Lat: 40.817025°
Long: 103.784622°

1917 Brass Cap,
1.6' High
Lat: 40.817078°
Long: 103.775017°

1917 Brass Cap,
0.2' High
Lat: 40.817133°
Long: 103.765389°



NOTE:
THE PROPOSED TARGET BOTTOM HOLE FOR THIS WELL IS LOCATED IN THE SW 1/4 SE 1/4 OF SECTION 32, T10N, R57W, 6th P.M. AT 100' FSL 2475' FEL. IT BEARS S01°42'46\"W 8162.90' FROM THE PROPOSED WELL HEAD.

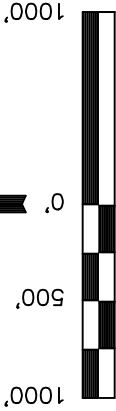
HORSETAIL #29G-3209A
Elev. Ungraded Ground = 4695'

1917 Brass Cap,
0.8' High
Lat: 40.809725°
Long: 103.784528°

1917 Brass Cap,
0.4' High
Lat: 40.802425°
Long: 103.784433°

1917 Brass Cap,
0.9' High
Lat: 40.802542°
Long: 103.765308°

2012 Alum Cap,
Flush with Ground
Lat: 40.809836°
Long: 103.765356°



S C A L E

CERTIFICATION

THIS IS TO CERTIFY THAT THE ABOVE DATA WAS PREPARED FROM FIELD NOTES OF ACTUAL SURVEYS MADE BY ME OR UNDER MY SUPERVISION AND THAT THE SAME ARE TRUE AND CORRECT TO THE BEST OF MY KNOWLEDGE AND BELIEF.



UNTAH ENGINEERING & LAND SURVEYING
85 SOUTH 200 EAST - VERNAL, UTAH 84078
(435) 789-1017

SCALE	1" = 1000'	DATE SURVEYED:	08-01-13	DATE DRAWN:	08-07-13
PARTY	D.L.S. D.M.S. A.D.	REFERENCES	G.L.O. PLAT		
WEATHER	HOT	FILE	WHITING OIL & GAS CORP.		
PDOP = 1.9		NAD 83 (SURFACE LOCATION) LATITUDE = 40°48'38.03" (40.810564) LONGITUDE = 103°46'21.02" (103.772506)			
		NAD 27 (SURFACE LOCATION) LATITUDE = 40°48'38.09" (40.810581) LONGITUDE = 103°46'19.21" (103.772003)			

Target Bottom Hole

- LEGEND:**
- = 90° SYMBOL
 - = PROPOSED WELL HEAD.
 - ▲ = SECTION CORNERS LOCATED.

T10N, R57W, 6th P.M.

WHITING OIL & GAS CORP.

Surface Location

Well location, HORSETAIL #29G-3209A (TARGET BOTTOM HOLE), located as shown in the SW 1/4 SE 1/4 of Section 32, T10N, R57W, 6th P.M., Weld County, Colorado.

1917 Brass Cap,
0.4' High,
Lat: 40.802425°
Long: 103.784433°

1917 Brass Cap,
0.2' High,
Lat: 40.802492°
Long: 103.774875°

1917 Brass Cap,
0.9' High,
Lat: 40.802542°
Long: 103.765308°

S89°26'26"W - 2647.04' (Meas.)

S89°32'51"W - 2649.18' (Meas.)

N02°50'58"W - 2661.08' (Meas.)

N02°35'59"W - 2660.51' (Meas.)

S89°30'38"W - 2637.93' (Meas.)

N02°36'54"W - 2661.00' (Meas.)

S89°32'31"W - 2636.31' (Meas.)

N02°50'26"W - 2658.34' (Meas.)

S89°30'38"W - 2637.93' (Meas.)

N02°36'54"W - 2661.00' (Meas.)

S89°32'31"W - 2636.31' (Meas.)

N02°50'26"W - 2658.34' (Meas.)

S89°30'38"W - 2637.93' (Meas.)

N02°36'54"W - 2661.00' (Meas.)

S89°32'31"W - 2636.31' (Meas.)

N02°50'26"W - 2658.34' (Meas.)

S89°30'38"W - 2637.93' (Meas.)

N02°36'54"W - 2661.00' (Meas.)

S89°32'31"W - 2636.31' (Meas.)

N02°50'26"W - 2658.34' (Meas.)

S89°30'38"W - 2637.93' (Meas.)

N02°36'54"W - 2661.00' (Meas.)

S89°32'31"W - 2636.31' (Meas.)

N02°50'26"W - 2658.34' (Meas.)

S89°30'38"W - 2637.93' (Meas.)

N02°36'54"W - 2661.00' (Meas.)

S89°32'31"W - 2636.31' (Meas.)

N02°50'26"W - 2658.34' (Meas.)

S89°30'38"W - 2637.93' (Meas.)

N02°36'54"W - 2661.00' (Meas.)

S89°32'31"W - 2636.31' (Meas.)

N02°50'26"W - 2658.34' (Meas.)

S89°30'38"W - 2637.93' (Meas.)

N02°36'54"W - 2661.00' (Meas.)

S89°32'31"W - 2636.31' (Meas.)

N02°50'26"W - 2658.34' (Meas.)

S89°30'38"W - 2637.93' (Meas.)

N02°36'54"W - 2661.00' (Meas.)

S89°32'31"W - 2636.31' (Meas.)

N02°50'26"W - 2658.34' (Meas.)

S89°30'38"W - 2637.93' (Meas.)

N02°36'54"W - 2661.00' (Meas.)

S89°32'31"W - 2636.31' (Meas.)

N02°50'26"W - 2658.34' (Meas.)

S89°30'38"W - 2637.93' (Meas.)

N02°36'54"W - 2661.00' (Meas.)

S89°32'31"W - 2636.31' (Meas.)

N02°50'26"W - 2658.34' (Meas.)

S89°30'38"W - 2637.93' (Meas.)

N02°36'54"W - 2661.00' (Meas.)

S89°32'31"W - 2636.31' (Meas.)

N02°50'26"W - 2658.34' (Meas.)

S89°30'38"W - 2637.93' (Meas.)

N02°36'54"W - 2661.00' (Meas.)

S89°32'31"W - 2636.31' (Meas.)

N02°50'26"W - 2658.34' (Meas.)

S89°30'38"W - 2637.93' (Meas.)

N02°36'54"W - 2661.00' (Meas.)

S89°32'31"W - 2636.31' (Meas.)

N02°50'26"W - 2658.34' (Meas.)

S89°30'38"W - 2637.93' (Meas.)

N02°36'54"W - 2661.00' (Meas.)

S89°32'31"W - 2636.31' (Meas.)

N02°50'26"W - 2658.34' (Meas.)

S89°30'38"W - 2637.93' (Meas.)

N02°36'54"W - 2661.00' (Meas.)

S89°32'31"W - 2636.31' (Meas.)

N02°50'26"W - 2658.34' (Meas.)

S89°30'38"W - 2637.93' (Meas.)

N02°36'54"W - 2661.00' (Meas.)

S89°32'31"W - 2636.31' (Meas.)

N02°50'26"W - 2658.34' (Meas.)

S89°30'38"W - 2637.93' (Meas.)

N02°36'54"W - 2661.00' (Meas.)

S89°32'31"W - 2636.31' (Meas.)

N02°50'26"W - 2658.34' (Meas.)

S89°30'38"W - 2637.93' (Meas.)

N02°36'54"W - 2661.00' (Meas.)

S89°32'31"W - 2636.31' (Meas.)

N02°50'26"W - 2658.34' (Meas.)

S89°30'38"W - 2637.93' (Meas.)

N02°36'54"W - 2661.00' (Meas.)

S89°32'31"W - 2636.31' (Meas.)

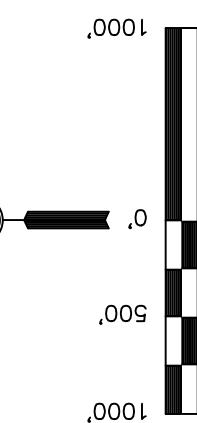
N02°50'26"W - 2658.34' (Meas.)

NOTE:
THE PROPOSED TARGET BOTTOM HOLE BEARS S01°42'46"W 8162.90' FROM THE PROPOSED WELL HEAD WHICH IS LOCATED IN THE SW 1/4 NE 1/4 OF SECTION 29, T10N, R57W, 6th P.M. AT 2379' FNL 1979' FEL.

1917 GLO Brass Cap, 1.4' High,
Lat: 40.795131°
Long: 103.783961°

1917 Brass Cap, 1.0' High,
Lat: 40.787953°
Long: 103.764450°

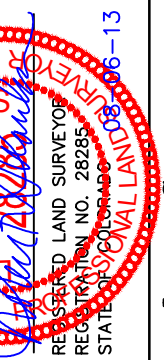
1917 Brass Cap, 0.4' High,
Lat: 40.795247°
Long: 103.764881°



S C A L E

CERTIFICATION

THIS IS TO CERTIFY THAT THE ABOVE DATA WAS PREPARED FROM FIELD NOTES OF ACTUAL SURVEYS MADE BY ME OR UNDER MY SUPERVISION AND THAT THE SAME ARE TRUE AND CORRECT TO THE BEST OF MY KNOWLEDGE AND BELIEF.



UNTAH ENGINEERING & LAND SURVEYING
85 SOUTH 200 EAST - VERNAL, UTAH 84078
(435) 789-1017

SCALE	1" = 1000'	DATE SURVEYED:	08-01-13	DATE DRAWN:	08-07-13
PARTY	D.L.S. D.M.S. A.D.	REFERENCES	G.L.O. PLAT		
WEATHER	HOT	FILE	WHITING OIL & GAS CORP.		

NAD 83 (TARGET BOTTOM HOLE)	LATITUDE = 40°47'17.43" (40.788175)
	LONGITUDE = 103°46'24.27" (103.773408)
NAD 27 (TARGET BOTTOM HOLE)	LATITUDE = 40°47'17.48" (40.788189)
	LONGITUDE = 103°46'22.46" (103.772906)

LEGEND:
 = 90° SYMBOL
 ● = PROPOSED WELL HEAD.
 ▲ = SECTION CORNERS LOCATED.