



received 10/15/2014
facility 159354
doc 2142187

October 15, 2014

Mr. Rick Allison
Environmental Protection Specialist
Colorado Oil and Gas Conservation Commission (COGCC)
1120 Lincoln Street, Suite 801
Denver, Colorado 80203

Via email; Rick.Allison@state.co.us

**Subject: Quarterly Monitoring Report
NGL Water Solutions DJ LLC – C8 Facility
COGCC UIC Facility ID: 159354
61635 Weld County Road 77
Grover, Colorado
CGRS Project No. 1-8019-12667aa**

Dear Mr. Allison:

This report is a summary of monitoring activities performed by CGRS, Inc. (CGRS) at the NGL Water Solutions DJ LLC, C8 facility in Grover, Colorado (Figure 1). Monitoring activities were performed on September 16, 2014, and consisted of measuring depth to groundwater, collecting water quality samples, and contracting analytical testing of the water quality samples.

On September 16, 2014, monitoring wells MW-4 through MW-7 were checked for the presence of groundwater. Water was sampled from all groundwater monitoring wells and submitted to Technology Laboratories (Tech Lab) of Fort Collins, Colorado for analysis of benzene, toluene, ethylbenzene, total xylenes (BTEX), chlorides and total dissolved solids (TDS). Furthermore, the sub-sump monitoring point was inspected for the presence of liquid to confirm that the sump remains structurally sound. No liquids were discovered in the sub-sump monitoring point during the September 16, 2014 monitoring event.

A review of groundwater analytical data indicates no detectable concentrations of BTEX above Colorado Oil and Gas Conservation Commission (COGCC) maximum allowable concentrations in any of the groundwater quality samples submitted for analyses. TDS and chlorides appear to be within normal background levels when compared to historic site data; however, elevated TDS and chlorides in monitoring well MW-4 are greater than other site wells. The increase in these parameters may be due to its close proximity to the site leach field since well MW-4 is not located within close proximity to production water processing areas, and BTEX concentrations were not detected. Groundwater analytical data and Chain-of-Custody documentation are included as supporting documentation and are summarized on Table 1 and illustrated on Figure 3.

CGRS will continue with the quarterly monitoring program, which will consist of obtaining water level measurements and collecting water quality samples from project monitoring wells. Furthermore, water quality samples will be collected from the sub-sump monitoring point on an as-needed basis. The next quarterly monitoring event is scheduled for December 2014. If you have any questions regarding this letter report, please call Mr. Craig Mulica at (970) 493-7780.

Sincerely,
CGRS, Inc.



Kenneth M. Rogowski
Project Manager/Scientist

Reviewed By:



Craig S. Mulica
Associate Geologist

Enclosures:

Figures 1 through 3
Table 1: Groundwater Elevation and Analytical Data
Attachment A: Laboratory Analysis Reports & Chain-of-Custody Documentation

cc: Ms. Rae Chrisman – High Sierra Water Services; rchrisman@highsierraenergy.com
Ms. Heather Barbare - Weld County Department of Public Health and Environment;
hbarbare@co.weld.co.us

FIGURES

Map ID	Tank Name	Approx. Tank Capacity (BBL)	Purpose
1	T-100-1	1000	HWSB - Oil and sediment removal
2	T-100-2	1000	HWSB - Oil and sediment removal
3	T-200-1	825	Pre-sedimentation - system tank
4	T-200-2	825	Pre-sedimentation - system tank
5	T-300-1	660	Pre-sedimentation - system tank
6	T-300-2	660	Pre-sedimentation - system tank
7	T-400-1	660	Pre-sedimentation - system tank
8	T-400-2	660	Pre-sedimentation - system tank
9	T-500-1	660	Pre-sedimentation - system tank
10	T-500-2	660	Pre-sedimentation - system tank
11	T-600-1	660	Pre-sedimentation - system tank
12	T-600-2	660	Pre-sedimentation - system tank
13	T-700-1	900	Sedimentation - secondary oil recovery
14	T-700-2	900	Sedimentation - secondary oil recovery
15	T-1610	400	Solids storage
16	T-1620	400	Solids storage
17	T-800-1	500	Equalization - system tank
18	T-800-2	500	Equalization - system tank
19	T-900-1	500	Equalization - system tank
20	T-900-2	500	Equalization - system tank
21	T-1000-1	500	Equalization - system tank
22	T-1000-2	500	Equalization - system tank
23	T-1100-1	500	Equalization - system tank
24	T-1100-2	500	Equalization - system tank
25	T-1200-1	500	Equalization - system tank
26	T-1200-2	500	Equalization - system tank
27	T-1300-1	500	Pre-filtration - system tank
28	T-1300-2	500	Pre-filtration - system tank
29	T-1400-1	500	Pre-Injection - clean water storage
30	T-1400-2	500	Pre-Injection - clean water storage
31	T-1510	400	Heated Oil processing
32	T-1520	400	Oil processing
33	T-1530	400	Oil processing
34	T-1540	400	Oil processing
35	T-1550	400	Oil processing
36	T-1560	400	Oil processing
37	T-1570	400	Oil processing

<div> <div></div> <div>MW-4</div> <div>MONITORING WELL</div> </div> <div> <div></div> <div>SUB-SUMP MONITORING POINT</div> </div> <div> <div></div> <div>P-1</div> <div>PERCOLATION TEST HOLE</div> </div> <div> <div></div> <div>SB-1</div> <div>SOIL BORING LOCATION</div> </div> <div> <div></div> <div>LIGHT</div> </div> <div> <div>P</div> <div>PUMP</div> </div>	<div> <div></div> <div>UgE</div> <div>UNDERGROUND ELECTRIC LINE</div> </div> <div> <div></div> <div>W</div> <div>WATER LINE</div> </div> <div> <div></div> <div>OhE</div> <div>OVERHEAD ELECTRIC LINE</div> </div> <div> <div></div> <div>SS</div> <div>SANITARY SEWER LINE</div> </div> <div> <div></div> <div>INJECTION LINE</div> </div> <div> <div></div> <div>FENCE LINE</div> </div>
---	--

PROJECT:	DRAFT:
1-8019-12667aa	CLB
DATE:	REVIEW:
04/19/13	



FIGURE 1
SITE MAP

NGL WATER SOLUTIONS DJ LLC, C8 FACILITY
61635 WELD COUNTY ROAD 77
GROVER, COLORADO

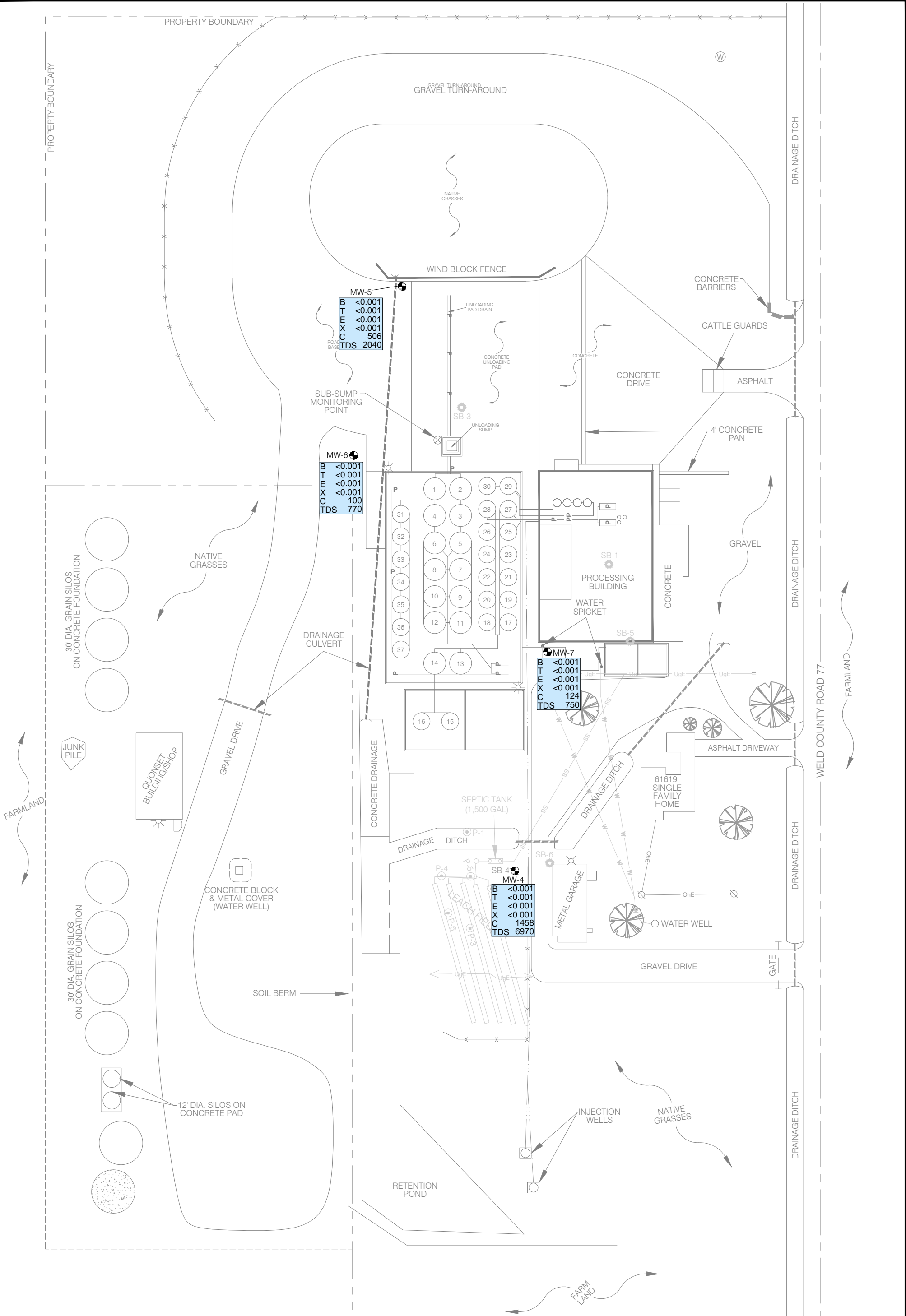


FIGURE 3
GROUNDWATER SAMPLE MAP
September 16, 2014

HIGH SIERRA WATER SERVICES C8 FACILITY
61635 WELD COUNTY ROAD 77
GROVER, COLORADO

PROJECT: 1-8019-12667aa	DRAFT: DRS
DATE: 10/14/2014	REVIEW:

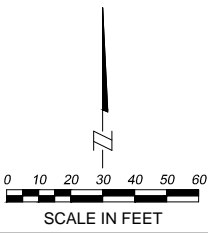


TABLE 1

GROUNDWATER ELVATION AND ANALYTICAL DATA

TABLE 1

GROUNDWATER ELEVATION AND ANALYTICAL DATA
NGL Water Solutions C-8 Facility
61635 WCR 77
Grover, Colorado

CGRS Project: 1-8019-12667aa

Sample ID	Date (mm/dd/yy)	Surveyed Well Elevation (ft)	Depth To Water (ft)	Groundwater Elevation (ft)	Benzene (mg/L)	Toluene (mg/L)	Ethyl- Benzene (mg/L)	Xylenes (mg/L)	Chlorides (mg/L)	TDS (mg/L)	TEPH (DRO) (mg/L)	TVPH (GRO) (mg/L)	TPH-HEM (mg/L)
SB-1	09/30/10	100.00	Dry	--	NS	NS	NS	NS	NS	NS	NS	NS	NS
	11/22/10	100.00	28.57	71.43	NS	NS	NS	NS	NS	NS	NS	NS	NS
	12/06/11				<i>Destroyed</i>								
SB-2	09/30/10	96.29	Dry	--	NS	NS	NS	NS	NS	NS	NS	NS	NS
	11/22/10	96.29	31.75	64.54	NS	NS	NS	NS	NS	NS	NS	NS	NS
	12/06/11				<i>Destroyed</i>								
SB-4 *MW-4	09/30/10	99.46	33.31	66.15	< 0.001	< 0.001	< 0.001	< 0.001	NS	NS	NS	NS	NS
	11/22/10	99.46	30.23	69.23	NS	NS	NS	NS	NS	NS	NS	NS	NS
	12/06/11	100.00	28.61	71.39	NS	NS	NS	NS	NS	NS	NS	NS	NS
	12/16/11	100.00	28.88	71.12	< 0.001	< 0.001	< 0.001	< 0.001	187	1090	NS	NS	NS
	06/11/12	100.00	30.44	69.56	< 0.001	< 0.001	< 0.001	< 0.001	1346	6910	NS	NS	NS
	09/12/12	100.00	23.00	77.00	< 0.001	< 0.001	< 0.001	< 0.001	2337	12310	NS	NS	NS
	12/06/12	100.00	28.09	71.91	< 0.001	< 0.001	< 0.001	< 0.001	2573	14110	NS	NS	NS
	03/13/13	100.00	28.99	71.01	< 0.001	< 0.001	< 0.001	< 0.001	3115	13480	NS	NS	NS
	06/21/13	100.00	25.35	74.65	< 0.001	< 0.001	< 0.001	< 0.001	3548	15790	NS	NS	NS
	09/16/13	100.00	25.09	74.91	< 0.001	< 0.001	< 0.001	< 0.001	3332	13590	NS	NS	NS
	12/11/13	100.00	24.10	75.90	< 0.001	< 0.001	< 0.001	< 0.001	3033	11810	NS	NS	NS
	03/13/14	100.00	23.78	76.22	< 0.001	< 0.001	< 0.001	< 0.001	1958	10040	NS	NS	NS
	06/12/14	100.00	23.51	76.49	< 0.001	< 0.001	< 0.001	< 0.001	2005	8720	NS	NS	NS
	09/16/14	100.00	22.10	77.90	< 0.001	< 0.001	< 0.001	< 0.001	1458	6970	NS	NS	NS
MW-5	12/07/11	97.39	25.05	72.34	NS	NS	NS	NS	NS	NS	NS	NS	NS
	12/16/11	97.39	15.52	81.87	< 0.001	< 0.001	< 0.001	< 0.001	249	1100	NS	NS	NS
	06/11/12	97.39	16.39	81.00	< 0.001	< 0.001	< 0.001	< 0.001	184	930	NS	NS	NS
	09/12/12	97.39	18.00	79.39	< 0.001	< 0.001	< 0.001	< 0.001	173	980	NS	NS	NS
	12/06/12	97.39	16.05	81.34	< 0.001	< 0.001	< 0.001	< 0.001	197	1020	NS	NS	NS
	03/13/13	97.39	17.01	80.38	< 0.001	< 0.001	< 0.001	< 0.001	260	1060	NS	NS	NS
	06/21/13	97.39	11.54	85.85	< 0.001	< 0.001	< 0.001	< 0.001	576	2090	NS	NS	NS
	09/16/13	97.39	12.36	85.03	< 0.001	< 0.001	< 0.001	< 0.001	397	1530	NS	NS	NS
	12/11/13	97.39	12.96	84.43	< 0.001	< 0.001	< 0.001	< 0.001	460	1930	NS	NS	NS
	03/13/14	97.39	13.79	83.60	< 0.001	< 0.001	< 0.001	< 0.001	473	1980	NS	NS	NS
	06/12/14	97.39	13.49	83.90	< 0.001	< 0.001	< 0.001	< 0.001	550	2120	NS	NS	NS
	09/16/14	97.39	12.89	84.50	< 0.001	< 0.001	< 0.001	< 0.001	506	2040	NS	NS	NS
MW-6	12/07/11	98.22	Dry	--	NS	NS	NS	NS	NS	NS	NS	NS	NS
	12/16/11	98.22	39.02	59.20	< 0.001	< 0.001	< 0.001	< 0.001	203	670	NS	NS	NS
	06/11/12	98.22	26.65	71.57	< 0.001	< 0.001	< 0.001	< 0.001	40.8	630	NS	NS	NS
	09/12/12	98.22	18.00	80.22	< 0.001	< 0.001	< 0.001	< 0.001	44.0	610	NS	NS	NS
	12/06/12	98.22	26.05	72.17	< 0.001	< 0.001	< 0.001	< 0.001	54.1	660	NS	NS	NS
	03/13/13	98.22	26.67	71.55	< 0.001	< 0.001	< 0.001	< 0.001	68.9	660	NS	NS	NS
	**6/21/2013	100.01	24.28	75.73	< 0.001	< 0.001	< 0.001	< 0.001	78.8	710	NS	NS	NS
	09/16/13	100.01	22.87	77.14	< 0.001	< 0.001	< 0.001	< 0.001	66.1	790	NS	NS	NS
	12/11/13	100.01	23.25	76.76	< 0.001	< 0.001	< 0.001	< 0.001	67.3	760	NS	NS	NS
	03/13/14	100.01	24.67	75.34	< 0.001	< 0.001	< 0.001	< 0.001	68.7	710	NS	NS	NS
	06/12/14	100.01	24.67	75.34	< 0.001	< 0.001	< 0.001	< 0.001	100	780	NS	NS	NS

TABLE 1

GROUNDWATER ELEVATION AND ANALYTICAL DATA
NGL Water Solutions C-8 Facility
61635 WCR 77
Grover, Colorado

CGRS Project: 1-8019-12667aa

Sample ID	Date (mm/dd/yy)	Surveyed Well Elevation (ft)	Depth To Water (ft)	Groundwater Elevation (ft)	Benzene (mg/L)	Toluene (mg/L)	Ethyl- Benzene (mg/L)	Xylenes (mg/L)	Chlorides (mg/L)	TDS (mg/L)	TEPH (DRO) (mg/L)	TVPH (GRO) (mg/L)	TPH-HEM (mg/L)
MW-6 Cont.	09/16/14	100.01	22.61	77.40	< 0.001	< 0.001	< 0.001	< 0.001	100	770	NS	NS	NS
MW-7	12/07/11	100.03	Dry	--	NS	NS	NS	NS	NS	NS	NS	NS	NS
	12/16/11	100.03	38.40	61.63	< 0.001	< 0.001	< 0.001	< 0.001	72.8	560	NS	NS	NS
	06/11/12	100.03	25.14	74.89	< 0.001	< 0.001	< 0.001	< 0.001	79.6	660	NS	NS	NS
	09/12/12	100.03	25.00	75.03	< 0.001	< 0.001	< 0.001	< 0.001	74.8	630	NS	NS	NS
	12/06/12	100.03	24.95	75.08	< 0.001	< 0.001	< 0.001	< 0.001	87.9	660	NS	NS	NS
	03/13/13	100.03	25.29	74.74	< 0.001	< 0.001	< 0.001	< 0.001	121	710	NS	NS	NS
	**6/21/2013	98.42	24.07	74.35	< 0.001	< 0.001	< 0.001	< 0.001	126	730	NS	NS	NS
	09/16/13	98.42	22.55	75.87	< 0.001	< 0.001	< 0.001	< 0.001	115	700	NS	NS	NS
	12/11/13	98.42	21.90	76.52	< 0.001	< 0.001	< 0.001	< 0.001	99.6	700	NS	NS	NS
	03/13/14	98.42	22.58	75.84	< 0.001	< 0.001	< 0.001	< 0.001	95.7	690	NS	NS	NS
	06/12/14	98.42	22.10	76.32	< 0.001	< 0.001	< 0.001	< 0.001	123	710	NS	NS	NS
	09/16/14	98.42	20.14	78.28	< 0.001	< 0.001	< 0.001	< 0.001	124	750	NS	NS	NS
Sub-Sump	06/11/12	NA	14.28	NA	< 0.001	< 0.001	< 0.001	< 0.001	NS	NS	3.06	<0.5	NS
	09/12/12	NA	NA	NA	NS	NS	NS	NS	NS	NS	NS	NS	NS
	12/06/12	NA	14.75	NA	NS	NS	NS	NS	NS	NS	NS	NS	NS
	03/13/13	NA	13.95	NA	0.003	<0.001	<0.001	0.002	NS	NS	NS	NS	8.1
	06/21/13	NA	Dry	NA	NS	NS	NS	NS	NS	NS	NS	NS	NS
	09/16/13	NA	Dry	NA	NS	NS	NS	NS	NS	NS	NS	NS	NS
	12/11/13	NA	13.95	NA	0.004	< 0.001	< 0.001	< 0.001	NS	NS	NS	NS	5.3
	03/13/14	NA	13.73	NA	NS	NS	NS	NS	NS	NS	NS	NS	NS
	06/12/14	NA	Dry	NA	NS	NS	NS	NS	NS	NS	NS	NS	NS
	09/16/14	NA	Dry	NA	NS	NS	NS	NS	NS	NS	NS	NS	NS
COGCC Allowable Concentration for sensitive area			-	-	0.005	0.56	0.7	1.4	-	-	500	500	500
MDL			-	-	0.001	0.001	0.001	0.001	-	-	10	0.5	10

Notes:

*Monitoring point SB-4 resurveyed and renamed MW-4 on December 6, 2011, when it was changed to permanent well status.

** Monitoring wells resurveyed on June 21, 2013 to account for well adjustments

Values in **bold face** exceed maximum allowable contaminant levels

TDS = Total Dissolved Solids

TEPH (DRO) = Total Extractable Petroleum Hydrocarbons; Diesel Range Organics

TVPH (GRO) = Total Volatile Petroleum Hydrocarbons; Gasoline Range Organics

TPH-HEM = Total Petroleum Hydrocarbons, Hexane Extractable Material

NS = Not Sampled

NA = Not Applicable

MDL = Method Detection Limit

ATTACHMENT A

**LABORATORY ANALYSIS REPORTS &
CHAIN-OF-CUSTODY DOCUMENTATION**



TECHNOLOGY LABORATORY, INC.

CENTRE PROFESSIONAL PARK

1012 Centre Avenue
Fort Collins, Colorado 80526
(970) 490-1414

CERTIFICATE OF ANALYSIS

CGRS, INC.
1301 Academy Court
Fort Collins, CO 80524

Sample ID: MW-4
Laboratory ID B1875-01

Sampled: 09/16/14
Received: 09/17/14

Project No.: 1-8019-12667aa
Matrix: Water

<u>CAS Number</u>	<u>Parameter</u>	<u>Result</u>	<u>Units</u>	<u>MDL</u>	<u>Method</u>	<u>Date Analyzed</u>
71-43-2	Benzene	< 0.001	mg/L	0.001	EPA-8260B	09/20/14
108-88-3	Toluene	< 0.001	mg/L	0.001	EPA-8260B	09/20/14
100-41-4	Ethylbenzene	< 0.001	mg/L	0.001	EPA-8260B	09/20/14
1330-20-7	Total Xylenes	< 0.001	mg/L	0.001	EPA-8260B	09/20/14
16887-00-6	Chloride	1458	mg/L	1	EPA-300.1	09/17/14
N/A	Total Dissolved Solids (TDS)	6970	mg/L	5	EPA-160.1	09/22/14

QA/QC SURROGATE RECOVERIES

<u>Compound</u>	<u>% Recovery</u>	<u>% Rec. Limits</u>
Dibromofluoromethane	81	68-120
Toluene-d8	92	81-128
Bromofluorobenzene	111	70-113

TECHNOLOGY LABORATORY, INC.

The results contained in this report
relate only to those items tested.



TECHNOLOGY LABORATORY, INC.

CENTRE PROFESSIONAL PARK

1012 Centre Avenue
Fort Collins, Colorado 80526
(970) 490-1414

CERTIFICATE OF ANALYSIS

CGRS, INC.
1301 Academy Court
Fort Collins, CO 80524

Sample ID: MW-5

Laboratory ID B1875-02

Sampled: 09/16/14

Received: 09/17/14

Project No.: 1-8019-12667aa

Matrix: Water

<u>CAS Number</u>	<u>Parameter</u>	<u>Result</u>	<u>Units</u>	<u>MDL</u>	<u>Method</u>	<u>Date Analyzed</u>
71-43-2	Benzene	< 0.001	mg/L	0.001	EPA-8260B	09/20/14
108-88-3	Toluene	< 0.001	mg/L	0.001	EPA-8260B	09/20/14
100-41-4	Ethylbenzene	< 0.001	mg/L	0.001	EPA-8260B	09/20/14
1330-20-7	Total Xylenes	< 0.001	mg/L	0.001	EPA-8260B	09/20/14
16887-00-6	Chloride	506	mg/L	1	EPA-300.1	09/17/14
N/A	Total Dissolved Solids (TDS)	2040	mg/L	5	EPA-160.1	09/22/14

QA/QC SURROGATE RECOVERIES

<u>Compound</u>	<u>% Recovery</u>	<u>% Rec. Limits</u>
Dibromofluoromethane	81	68-120
Toluene-d8	92	81-128
Bromofluorobenzene	111	70-113

TECHNOLOGY LABORATORY, INC.

The results contained in this report
relate only to those items tested.



TECHNOLOGY LABORATORY, INC.

CENTRE PROFESSIONAL PARK

1012 Centre Avenue
Fort Collins, Colorado 80526
(970) 490-1414

CERTIFICATE OF ANALYSIS

CGRS, INC.
1301 Academy Court
Fort Collins, CO 80524

Sample ID: MW-6

Laboratory ID B1875-03

Sampled: 09/16/14

Received: 09/17/14

Project No.: 1-8019-12667aa

Matrix: Water

<u>CAS Number</u>	<u>Parameter</u>	<u>Result</u>	<u>Units</u>	<u>MDL</u>	<u>Method</u>	<u>Date Analyzed</u>
71-43-2	Benzene	< 0.001	mg/L	0.001	EPA-8260B	09/20/14
108-88-3	Toluene	< 0.001	mg/L	0.001	EPA-8260B	09/20/14
100-41-4	Ethylbenzene	< 0.001	mg/L	0.001	EPA-8260B	09/20/14
1330-20-7	Total Xylenes	< 0.001	mg/L	0.001	EPA-8260B	09/20/14
16887-00-6	Chloride	100	mg/L	1	EPA-300.1	09/17/14
N/A	Total Dissolved Solids (TDS)	770	mg/L	5	EPA-160.1	09/22/14

QA/QC SURROGATE RECOVERIES

<u>Compound</u>	<u>% Recovery</u>	<u>% Rec. Limits</u>
Dibromofluoromethane	81	68-120
Toluene-d8	90	81-128
Bromofluorobenzene	111	70-113

TECHNOLOGY LABORATORY, INC.

The results contained in this report
relate only to those items tested.



TECHNOLOGY LABORATORY, INC.

CENTRE PROFESSIONAL PARK

1012 Centre Avenue
Fort Collins, Colorado 80526
(970) 490-1414

CERTIFICATE OF ANALYSIS

CGRS, INC.
1301 Academy Court
Fort Collins, CO 80524

Sample ID: MW-7

Laboratory ID B1875-04

Sampled: 09/16/14

Received: 09/17/14

Project No.: 1-8019-12667aa

Matrix: Water

<u>CAS Number</u>	<u>Parameter</u>	<u>Result</u>	<u>Units</u>	<u>MDL</u>	<u>Method</u>	<u>Date Analyzed</u>
71-43-2	Benzene	< 0.001	mg/L	0.001	EPA-8260B	09/20/14
108-88-3	Toluene	< 0.001	mg/L	0.001	EPA-8260B	09/20/14
100-41-4	Ethylbenzene	< 0.001	mg/L	0.001	EPA-8260B	09/20/14
1330-20-7	Total Xylenes	< 0.001	mg/L	0.001	EPA-8260B	09/20/14
16887-00-6	Chloride	124	mg/L	1	EPA-300.1	09/17/14
N/A	Total Dissolved Solids (TDS)	750	mg/L	5	EPA-160.1	09/22/14

QA/QC SURROGATE RECOVERIES

<u>Compound</u>	<u>% Recovery</u>	<u>% Rec. Limits</u>
Dibromofluoromethane	81	68-120
Toluene-d8	82	81-128
Bromofluorobenzene	90	70-113

TECHNOLOGY LABORATORY, INC.

The results contained in this report
relate only to those items tested.



TECHNOLOGY LABORATORY, INC.

1012 Centre Avenue
Fort Collins, Colorado 80526
(970) 490-1414

W.O. NUMBER: B1875

CHAIN-OF-CUSTODY REPORT

COMPANY NAME CGRS, INC.		DATE/TIME SAMPLED 9/16/14	
PROJECT MANAGER Craig Mulica		SampleID	
PROJECT NUMBER 1-8019-12667aa			
PROJECT LOCATION OR NAME Conquest Oil C8			
SAMPLERS SIGNATURE 			
ANALYSIS REQUESTED	OTHER		
HOLD, DON'T ANALYZE	HOLD AFTER ANALYSIS		
chloride		X — X	
Ferrous Iron			
PCBs			
BOD / COD			
NITRATE / NITRITE / AMMONIA			
TO-14 / TO-15 / TVPH Vapor			
BTEX Soil Vapor			
BTEX / TVPH Emissions Vapor			
React. / Ignite. / Corr. / Paint Filter			
RCRA 8 METALS (TOTAL / TCLP / DISSOLVED)			
pH / TSS / TDS		X — X	
SVOC 625 / 8270 / PAH (Total / TCLP)			
VOC 624 / 8260 (TOTAL/TCLP)			
OIL and GREASE			
TEPH (DRO)			
BTEX / MTBE / TVPH		X — X	
NUMBER OF CONTAINERS		3 3 3 3	
SAMPLE MATRIX (S) (W) (Air) (Other)		Wa Wa Wa Wa	

Page 1 of 1	TURNAROUND TIME Normal (<=10 Working Days) Next Day (2x normal rates) 3 day (1.5x normal rates)
NPDES PERMIT ? YES NO	LOGGED IN BY:
COMMENTS	RECEIVED BY:
RELINQUISHED BY:	COMPANY:
RELINQUISHED BY:	RECEIVED BY:
COMPANY:	COMPANY: