



**RADIAL CEMENT BOND  
GAMMA RAY  
CCL**

Company BONANZA CREEK ENERGY  
Well LATHAM T-P-2HNB  
Field WATTENBERG  
County WELD State CO

Location: SHL 352' FSL & 2220' FEL SW/SE  
API # : 05-123-38788  
Other Services

SEC 2 TWP 4N RGE 63W  
Permanent Datum GL Elevation 4520'  
Log Measured From KB 16'  
Drilling Measured From KB

Company BONANZA CREEK ENERGY  
Well LATHAM T-P-2HNB  
Field WATTENBERG  
County WELD  
State CO

Date 7-15-2014

Run Number ONE  
Depth Driller N/A  
Depth Logger 6440'  
Bottom Logged Interval 6437'  
Top Log Interval SURFACE  
Open Hole Size 7.875'  
Type Fluid WATER  
Density / Viscosity 1.0  
Max. Recorded Temp. 184  
Estimated Cement Top 80'  
Time Well Ready N/A  
Time Logger on Bottom N/A  
Equipment Number 4310  
Location GREELEY  
Recorded By N. BREHMER  
Witnessed By D. BARBLEROUSSE

Borehole Record  
Run Number Bit From To Size Weight From To  
ONE  
TWO

Casing Record  
Surface String Size 9.63 Wgt/Ft 36# Top SURFACE Bottom 748'  
Prot. String  
Production String 7 26# SURFACE 6704'  
Liner 4.5 11 6# 6206'

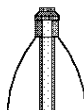
<<< Fold Here >>>

All interpretations are opinions based on inferences from electrical or other measurements and we cannot and do not guarantee the accuracy or correctness of any interpretation, and we shall not, except in the case of gross or willful negligence on our part, be liable or responsible for any loss, costs, damages, or expenses incurred or sustained by anyone resulting from any interpretation made by any of our officers, agents or employees. These interpretations are also subject to our general terms and conditions set out in our current Price Schedule.

**Comments**

CORRELATED TO LINER TOP  
RAN CBL TO VERIFY CEMENT BOND

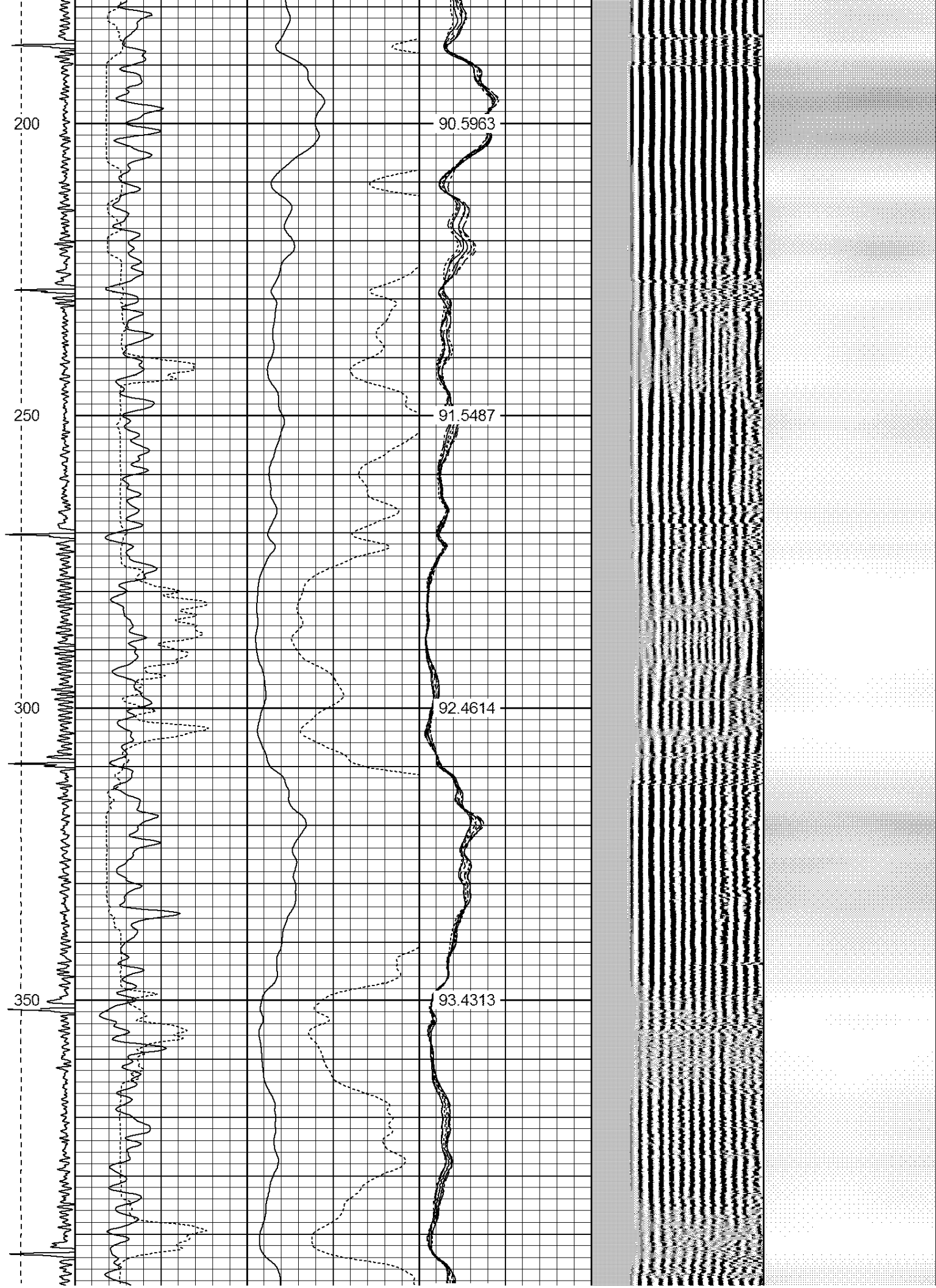
THANK YOU FOR USING WARRIOR !!!!!!!

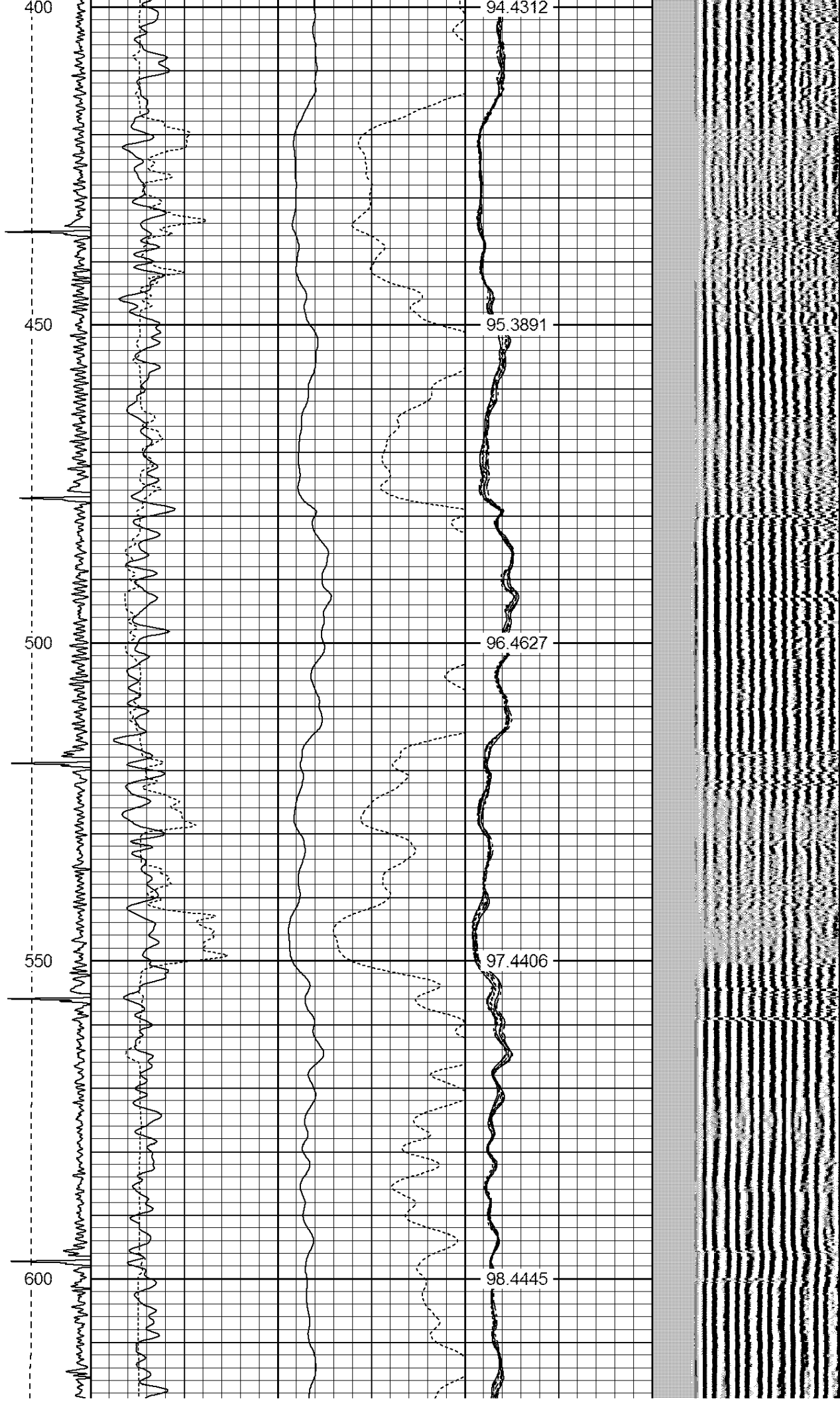
Sensor	Offset (ft)	Schematic	Description	Len (ft)	OD (in)	Wt (lb)
						

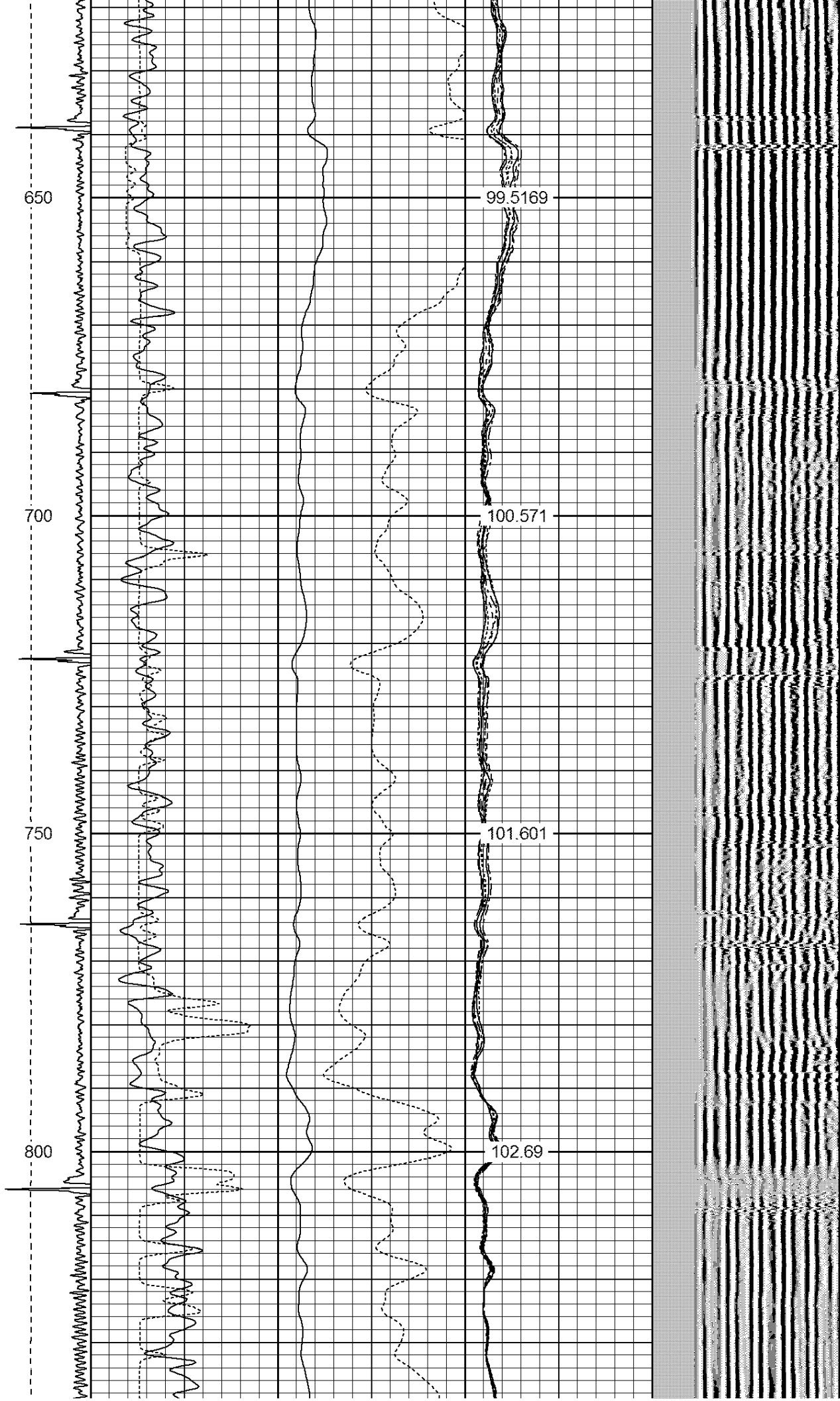
CNLSC	17.75		CNT-Probe_B (275) 6 bow centralizer	3.00	2.75	40.00
CNSSC	16.92					
HEADVOLT	16.08					
IntTemp	14.67					
WVF3FT	11.42					
WVFCAL	11.42					
WVFS1	11.42					
WVFS2	11.42					
WVFS3	11.42					
WVFS4	11.42					
WVFS5	11.42					
WVFS6	11.42					
WVFS7	11.42					
WVFS8	11.42					
WVF5FT	10.42					
			RBT-Probe (Base) Probe Radli Bond Tool with Digital Telemetry	8.92	2.75	90.00
			PTS275	2.83	2.75	
CCL	3.64					
			GR-Probe (275) Probe 2.75"	4.33	2.75	30.00
GR	0.90					
Dataset: latham t-p-2hnb.db: field/well/run1/pass6 Total Length: 19.08 ft Total Weight: 160.00 lb O.D. 2.75 in						

-9	CCL	1	200	TT (usec)	800	0	AMP (mV)	100	0	AMPS1	100	200	VDL	1200	1	Cement Map	8
LSPD			0	GR (GAPI)	200	0	AMPx5 (mV)	20	0	AMPS2	100				1		100
(ft/min)			200	GR (GAPI)	400				0	AMPS4	100						
0		250							0	AMPS5	100						
									0	AMPS6	100						
									0	AMPS7	100						
									0	AMPS8	100						
										IntTemp							
										(degF)							



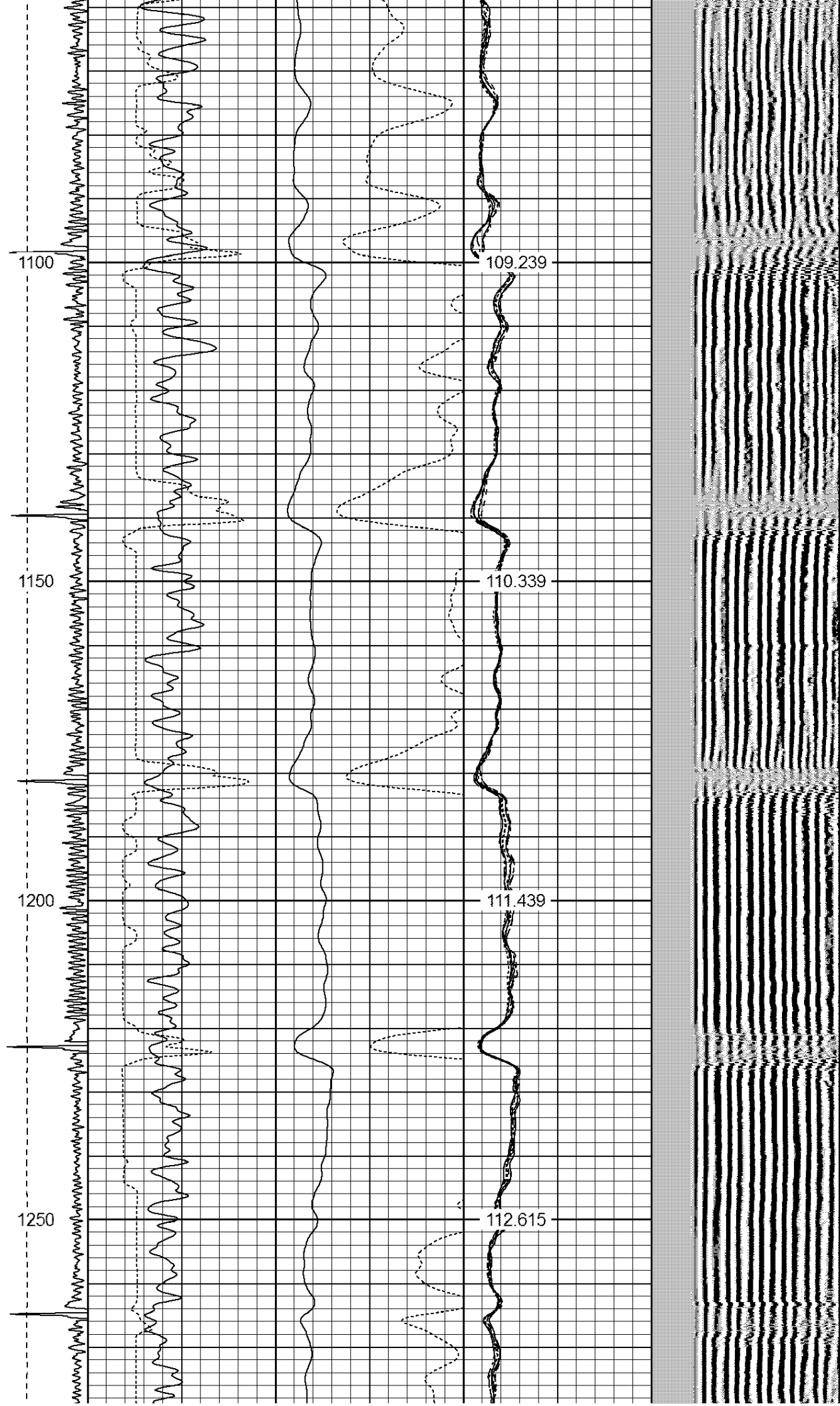




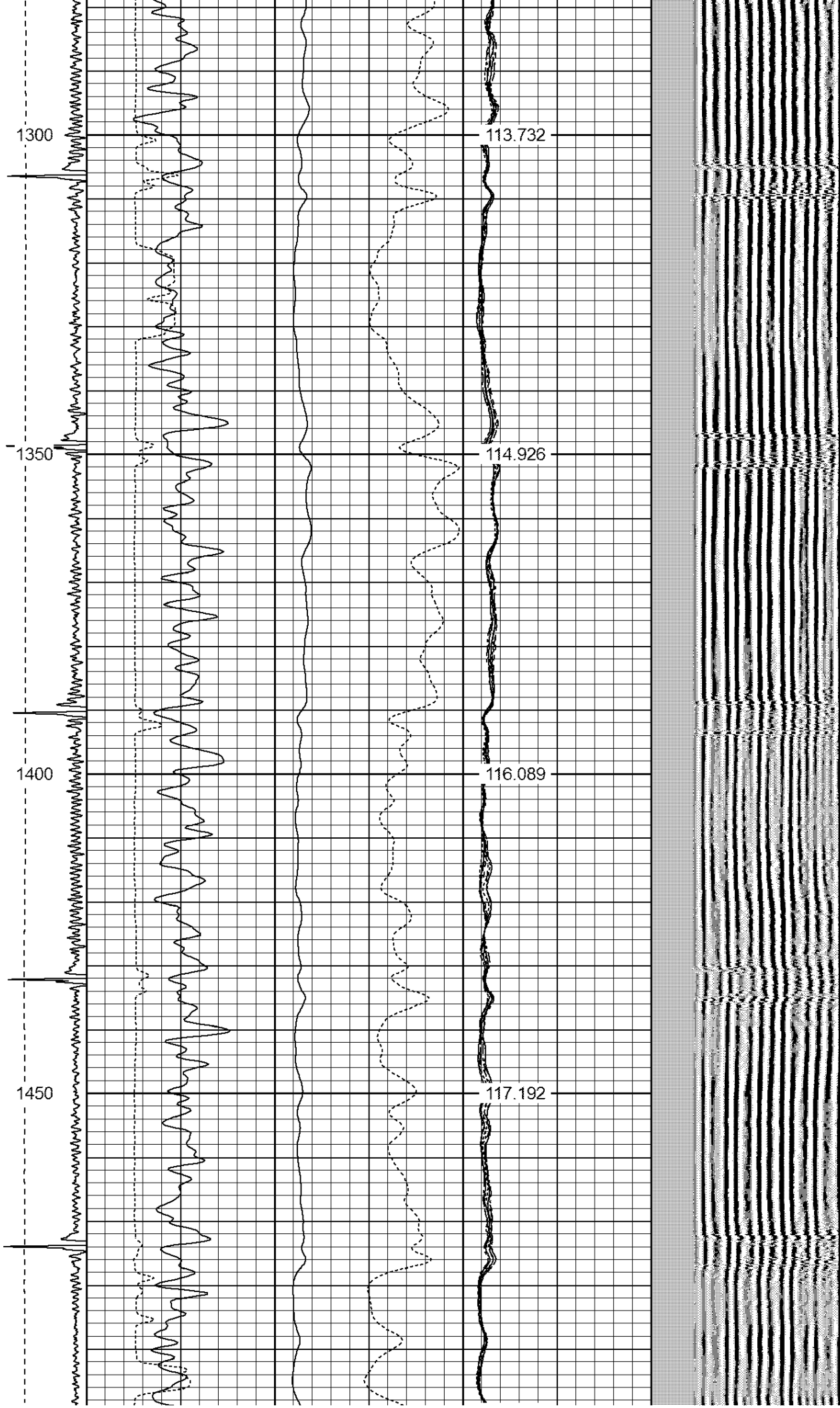


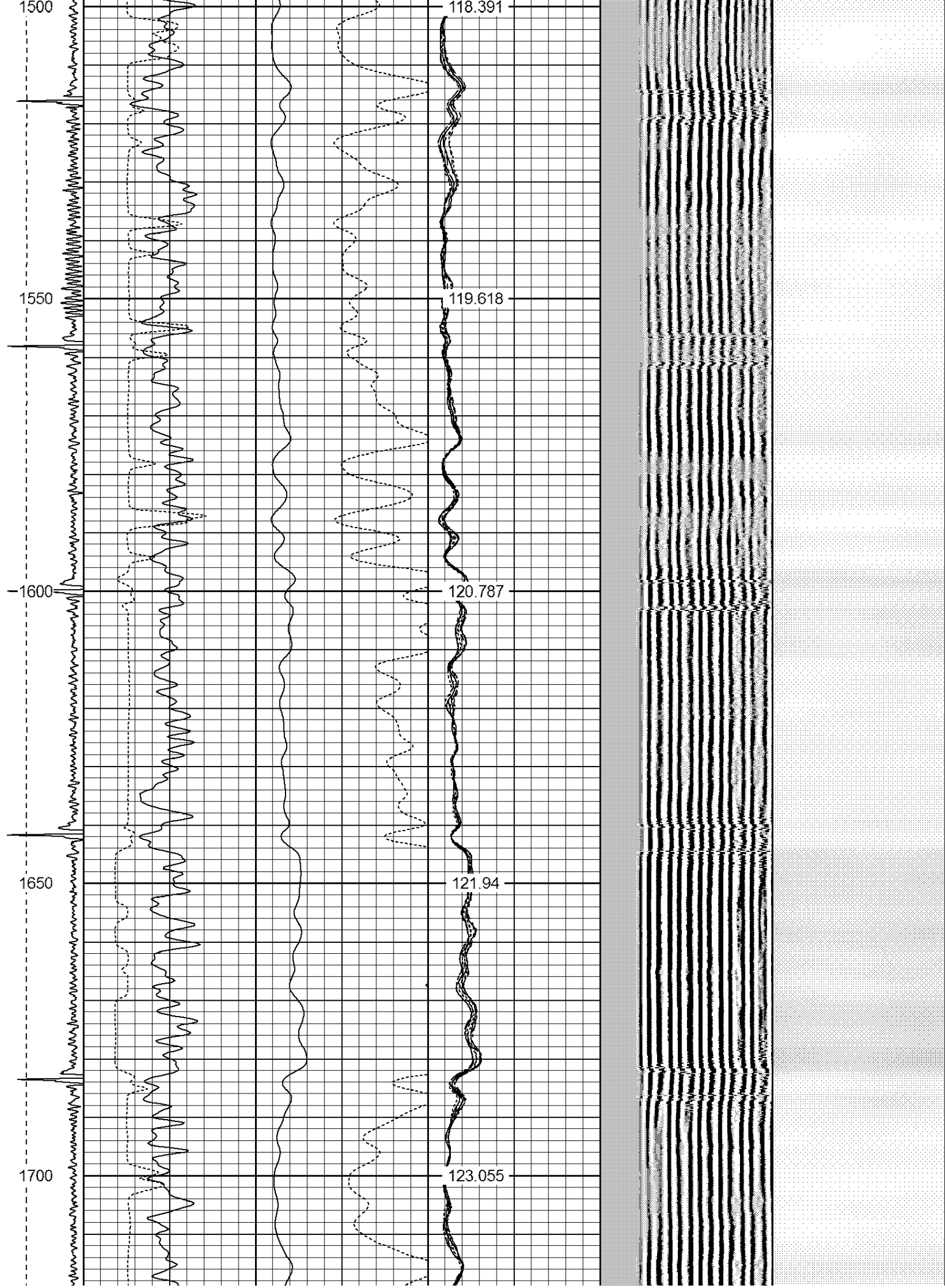


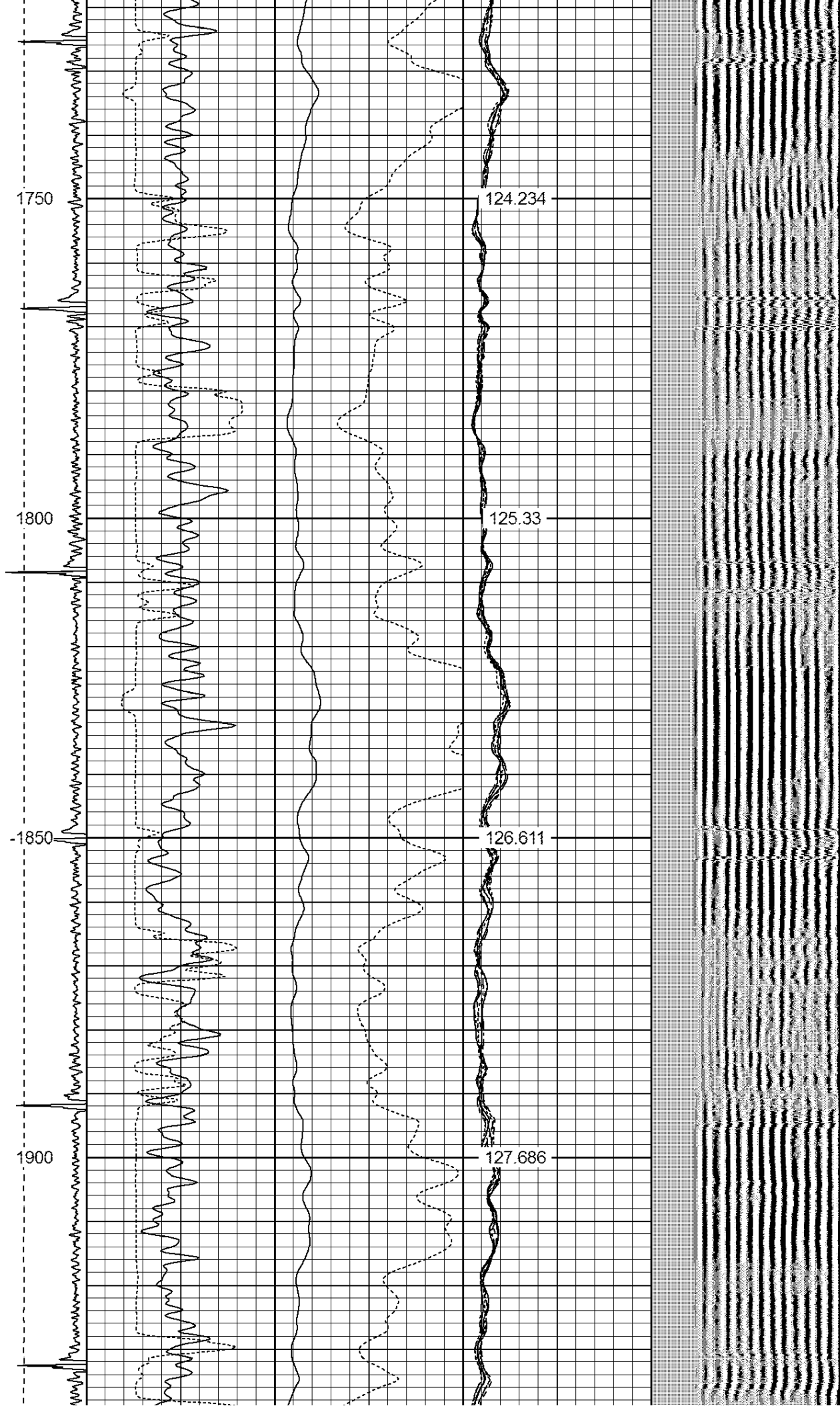


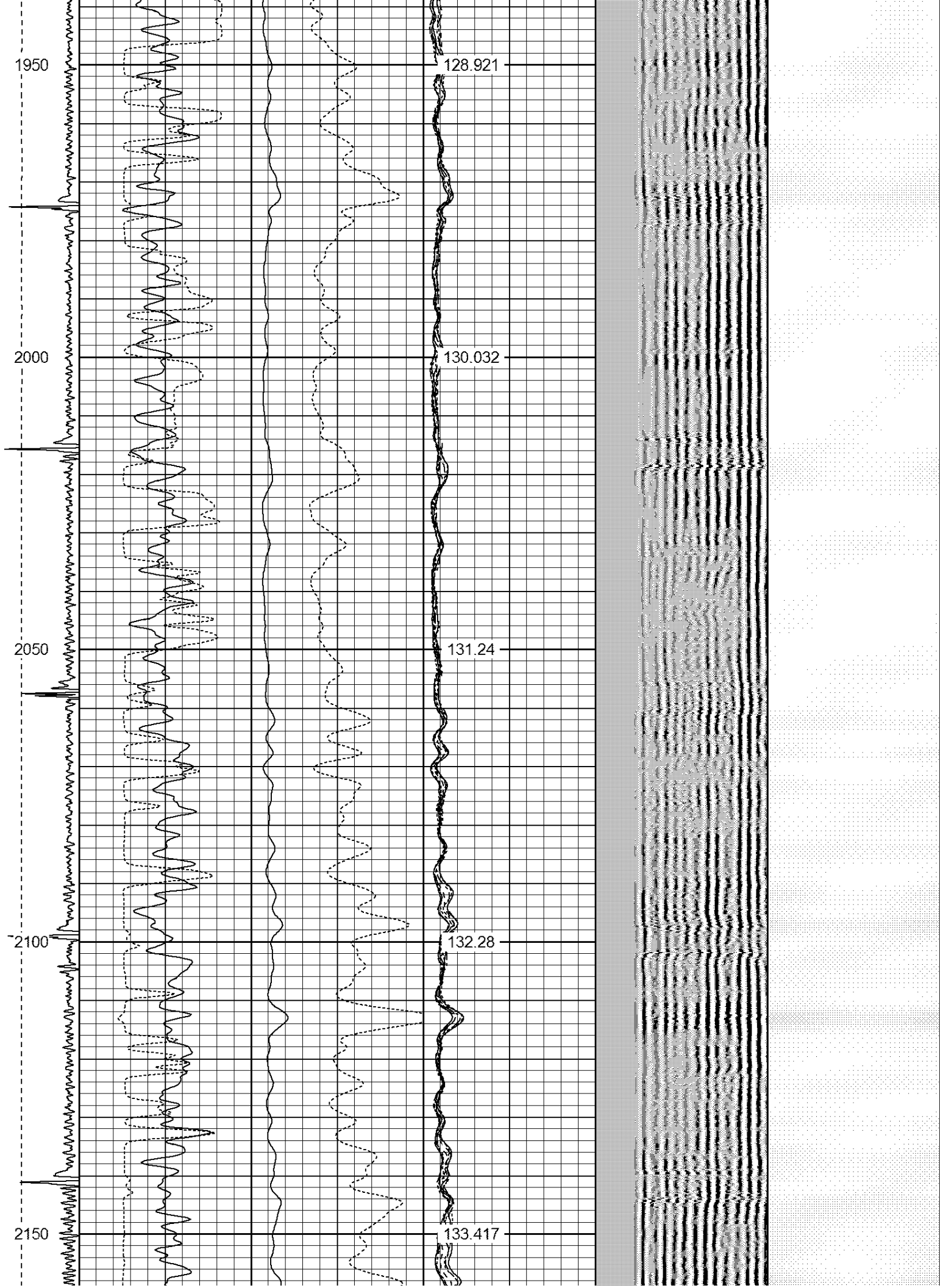


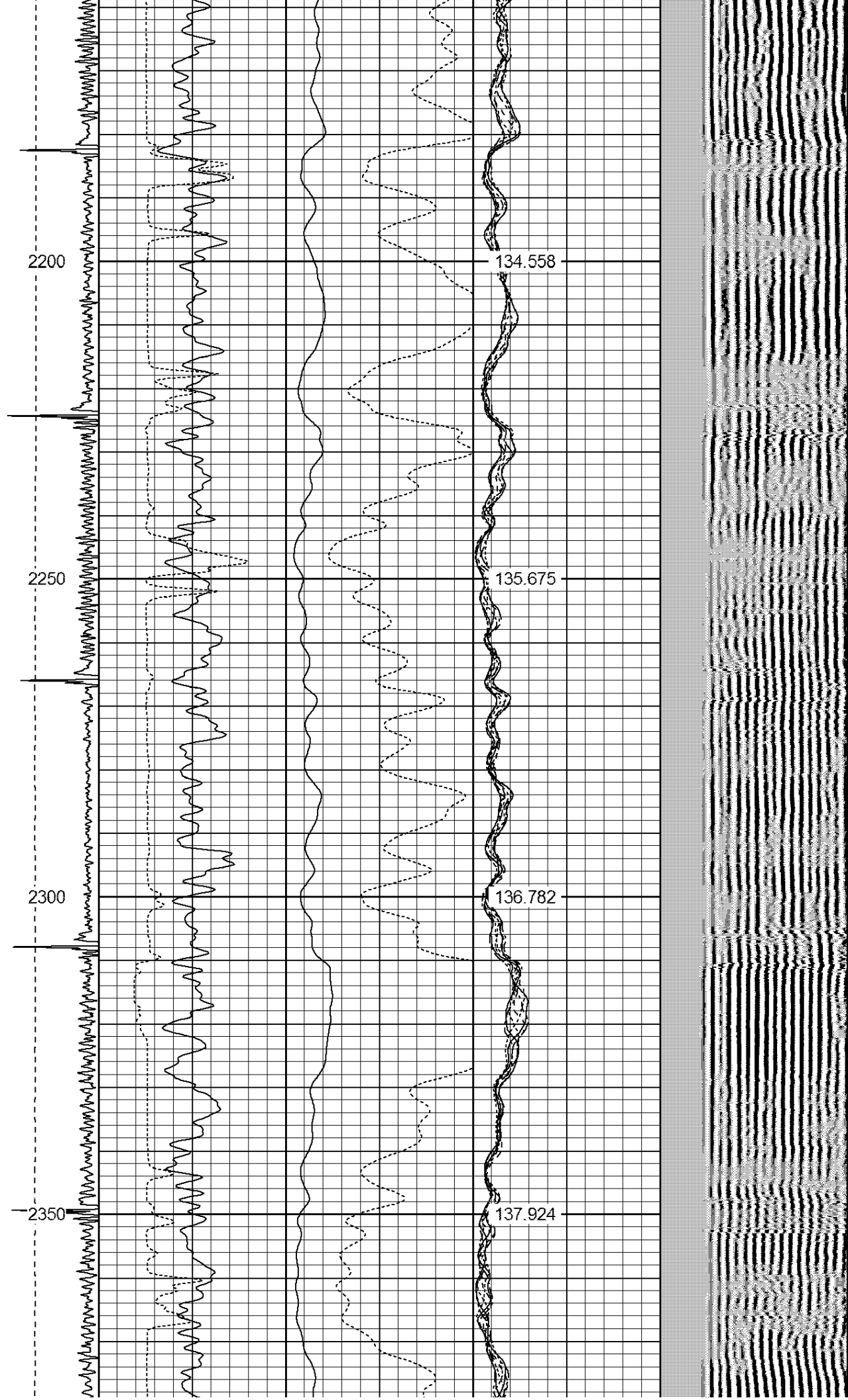






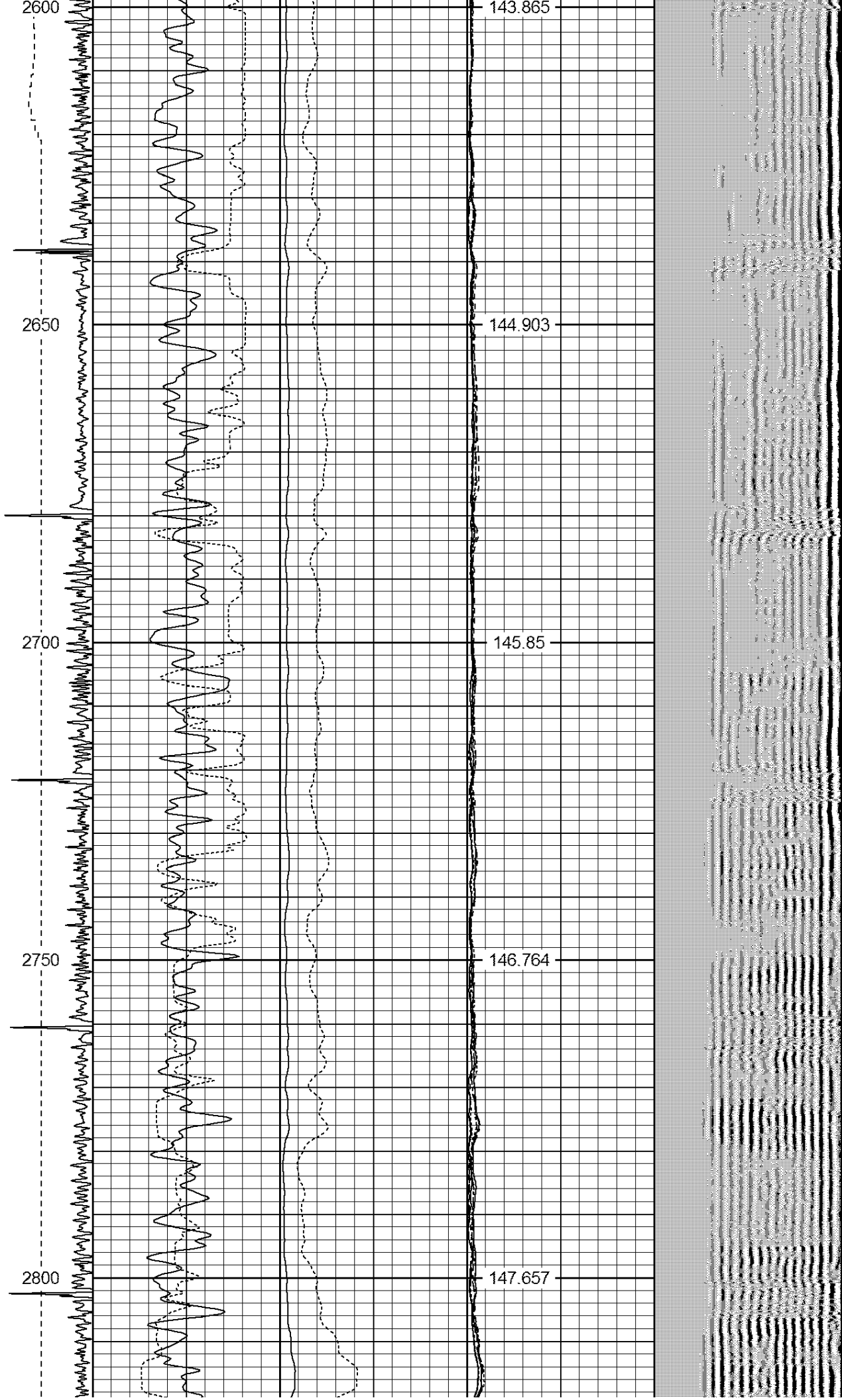




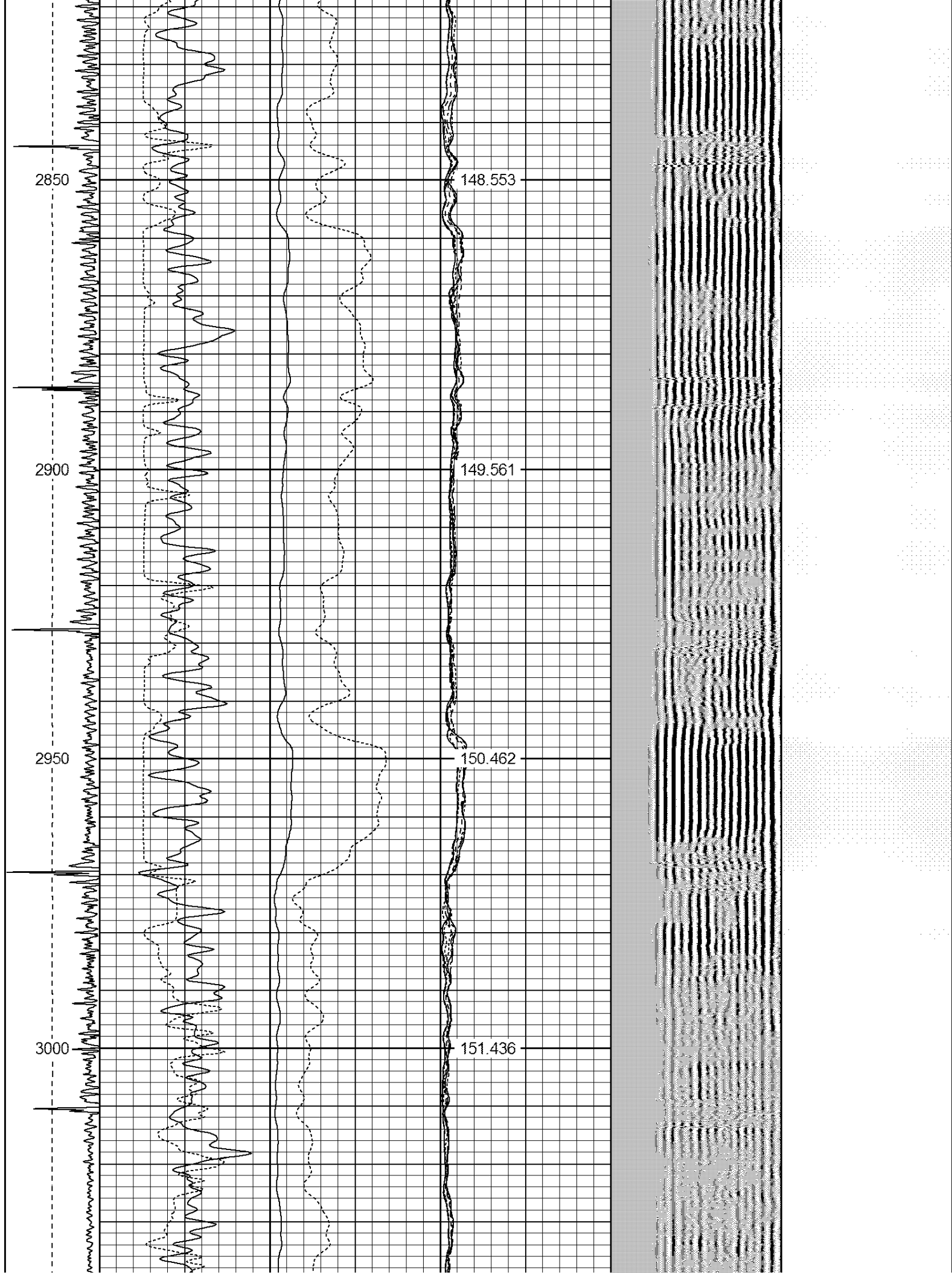


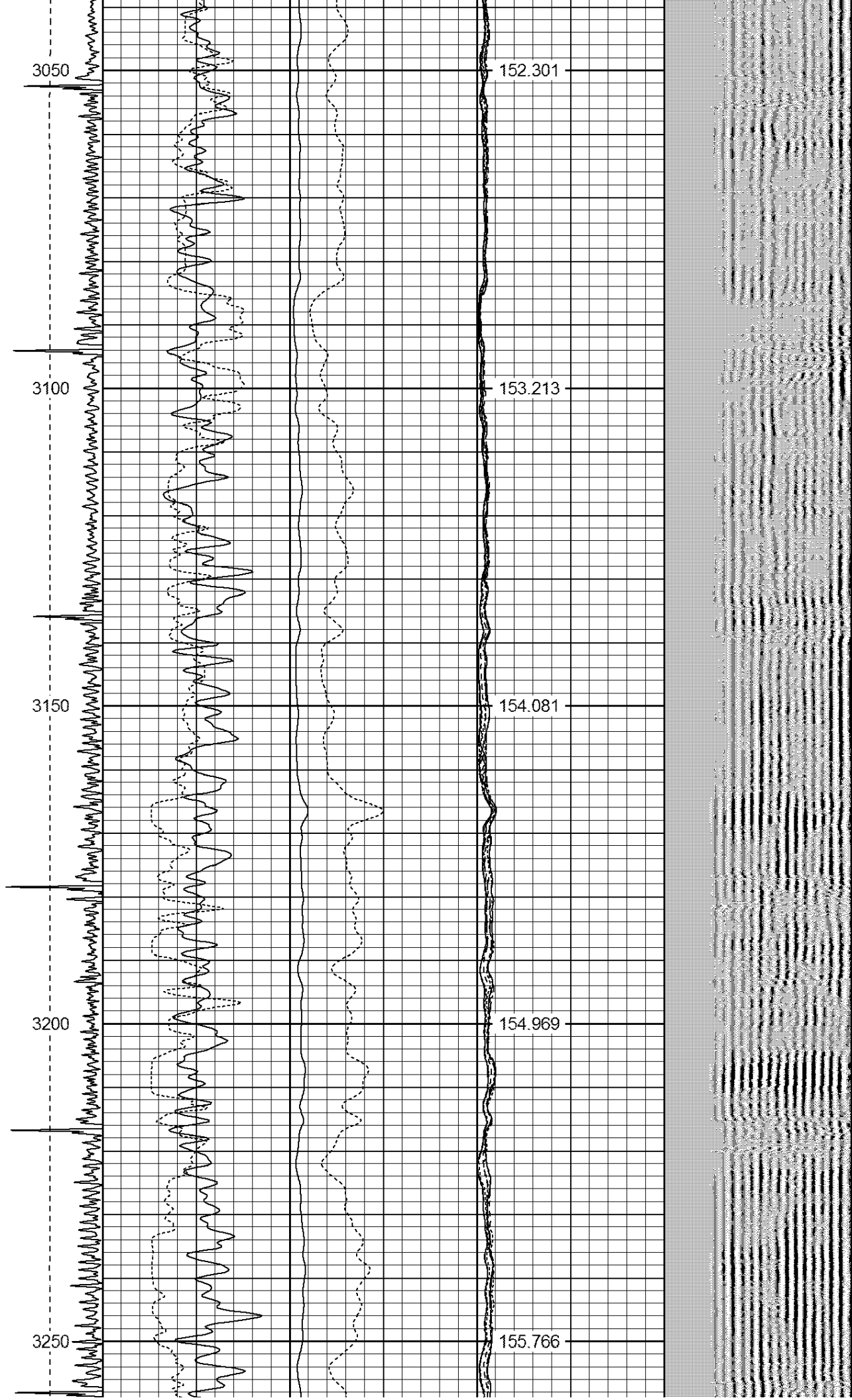


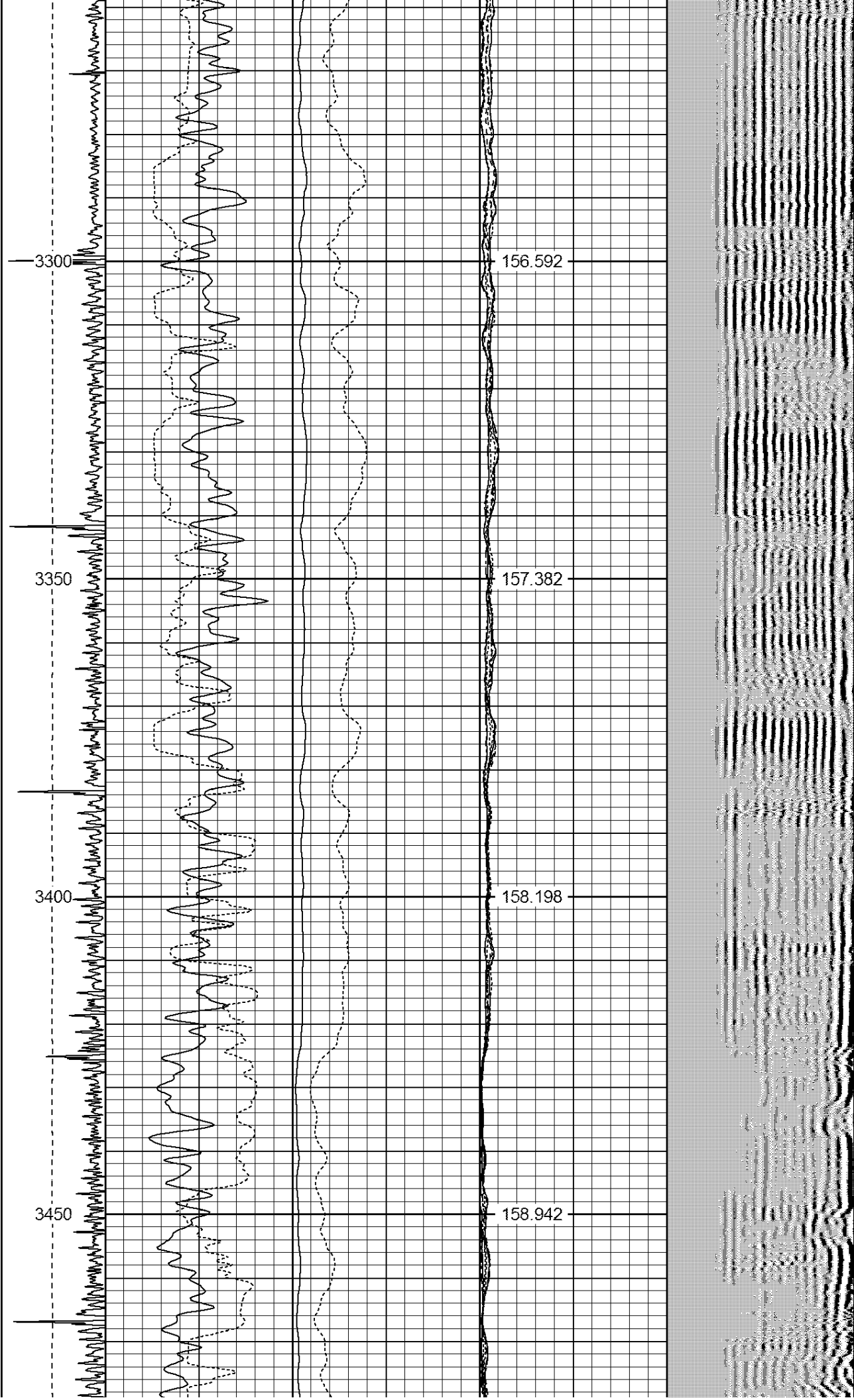


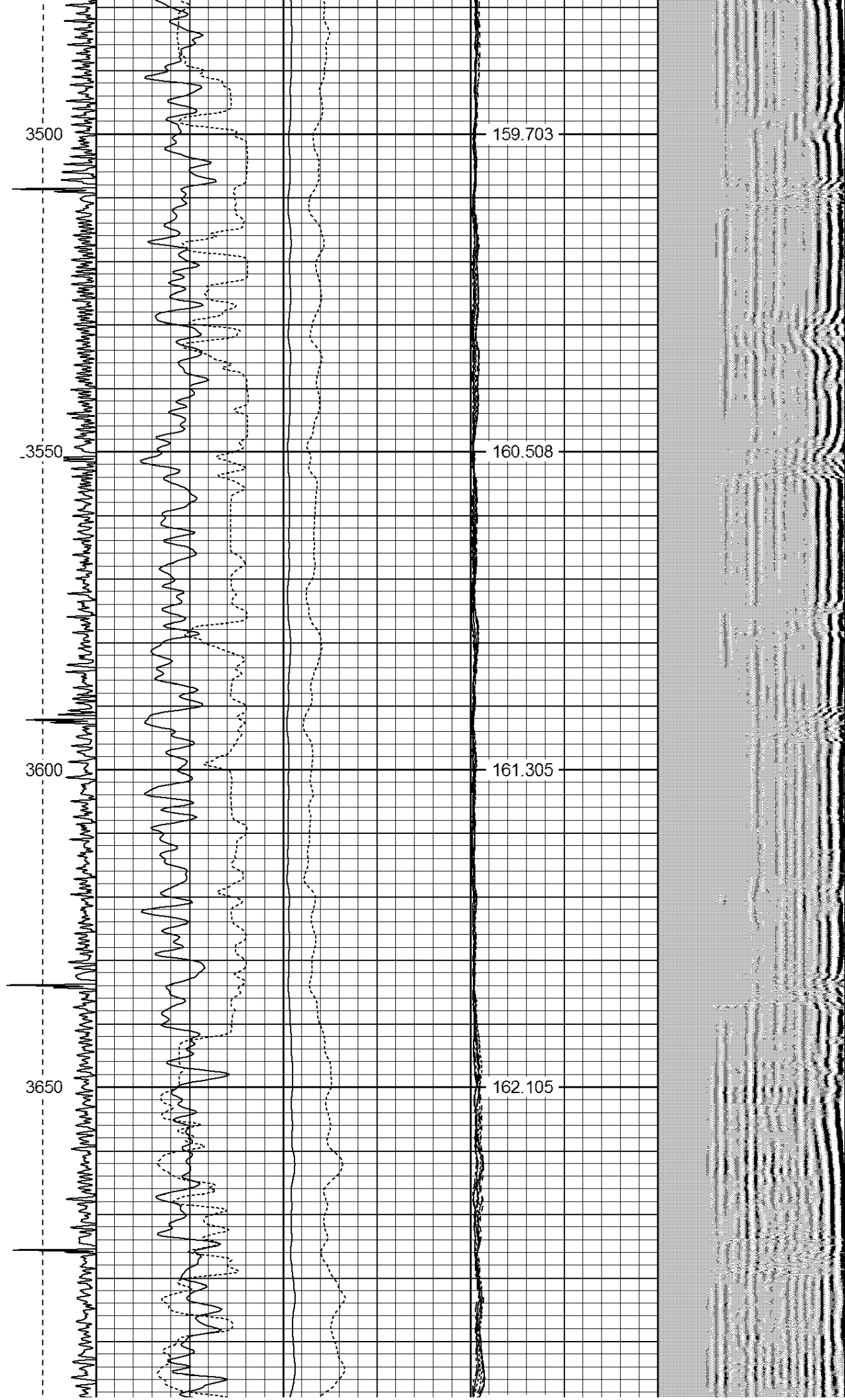


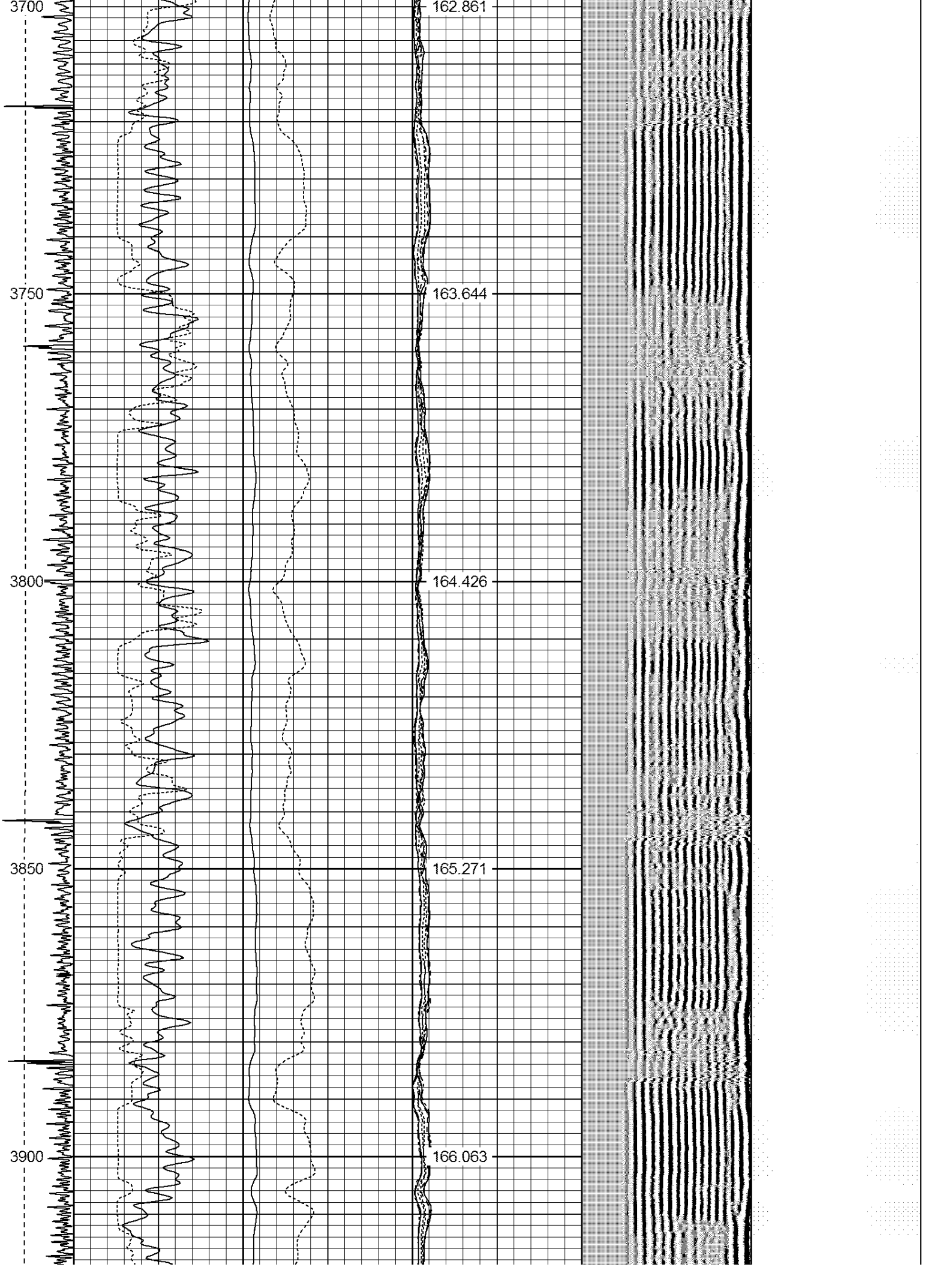












3950

166.857

4000

167.635

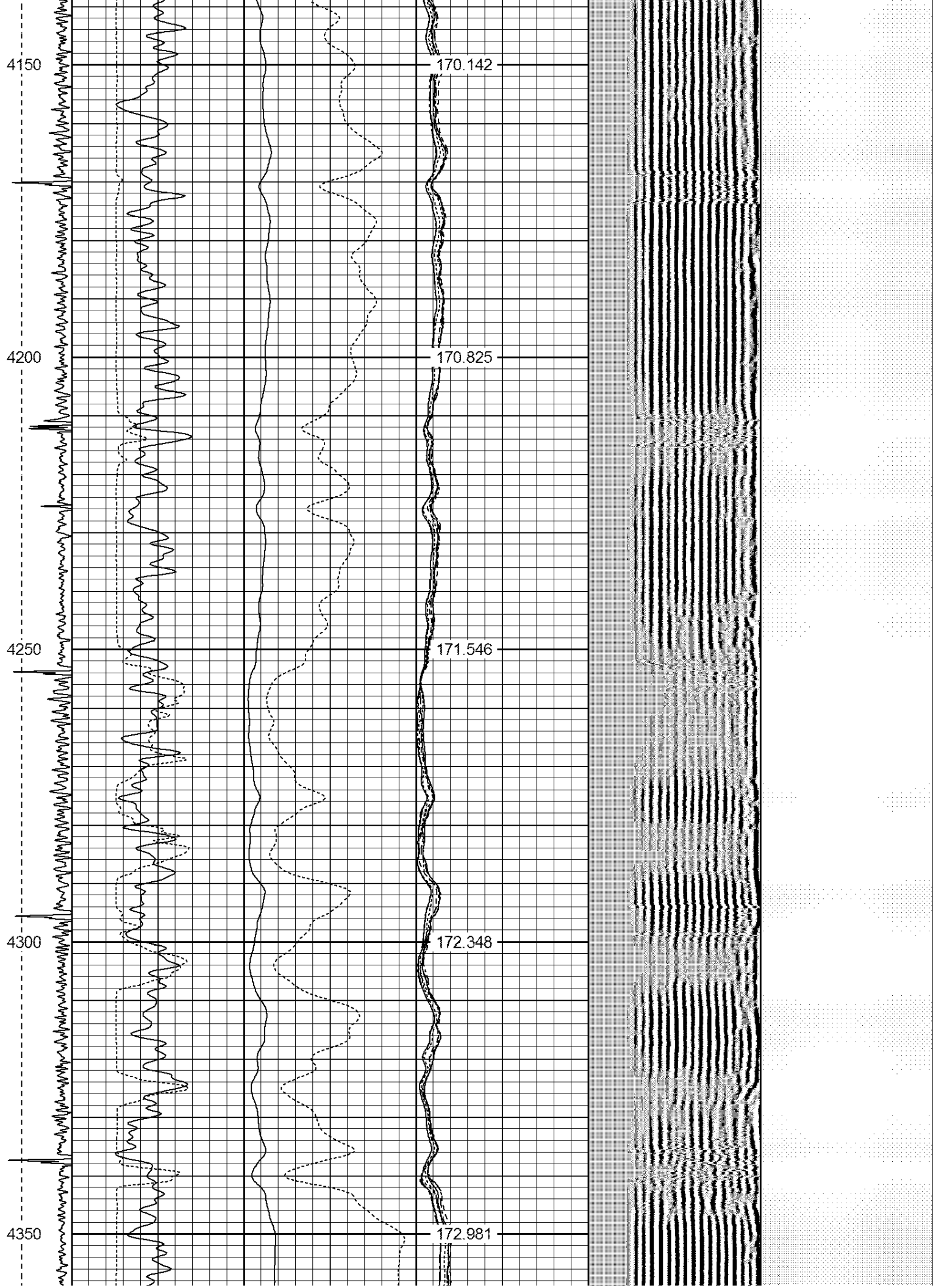
4050

168.415

4100

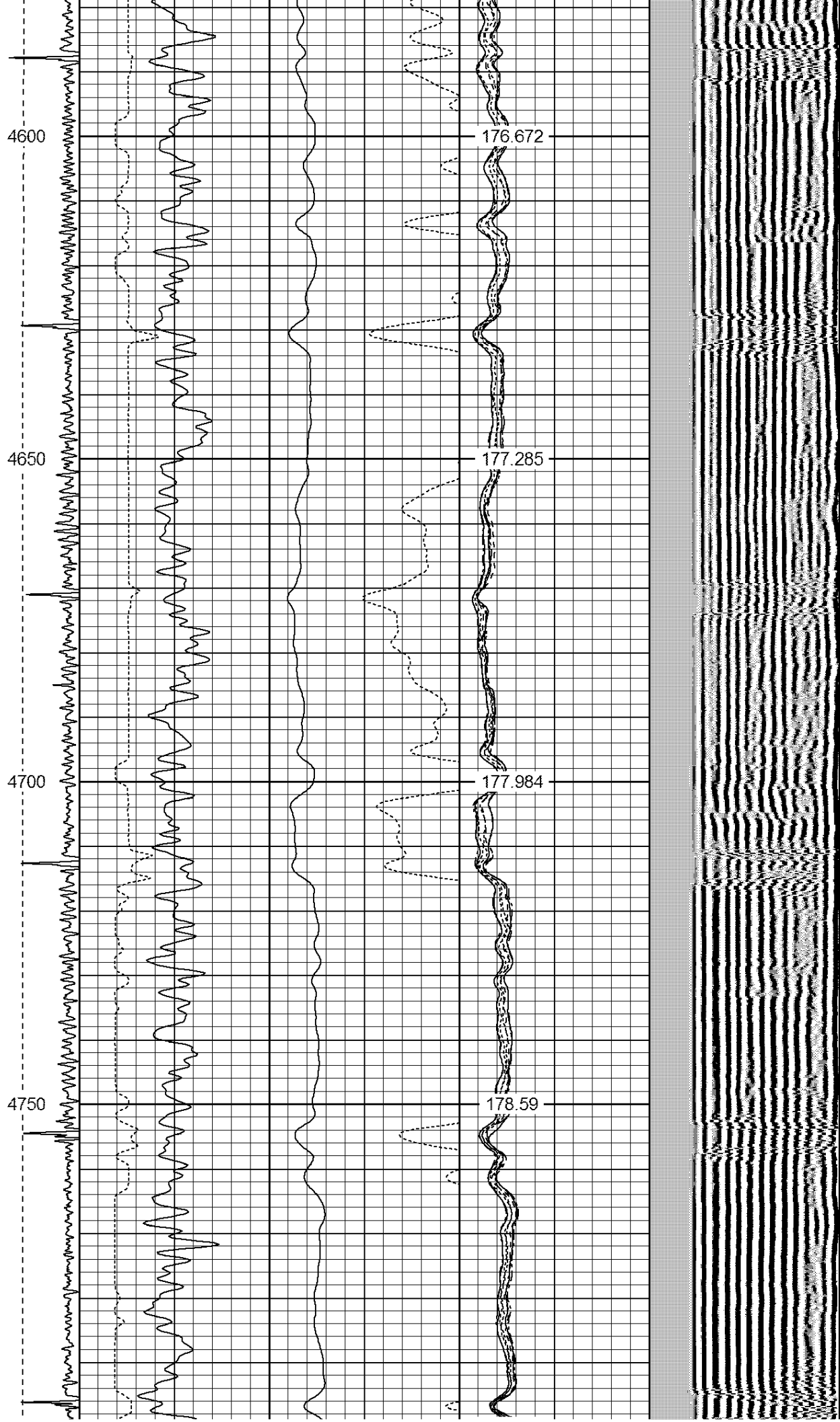
169.321



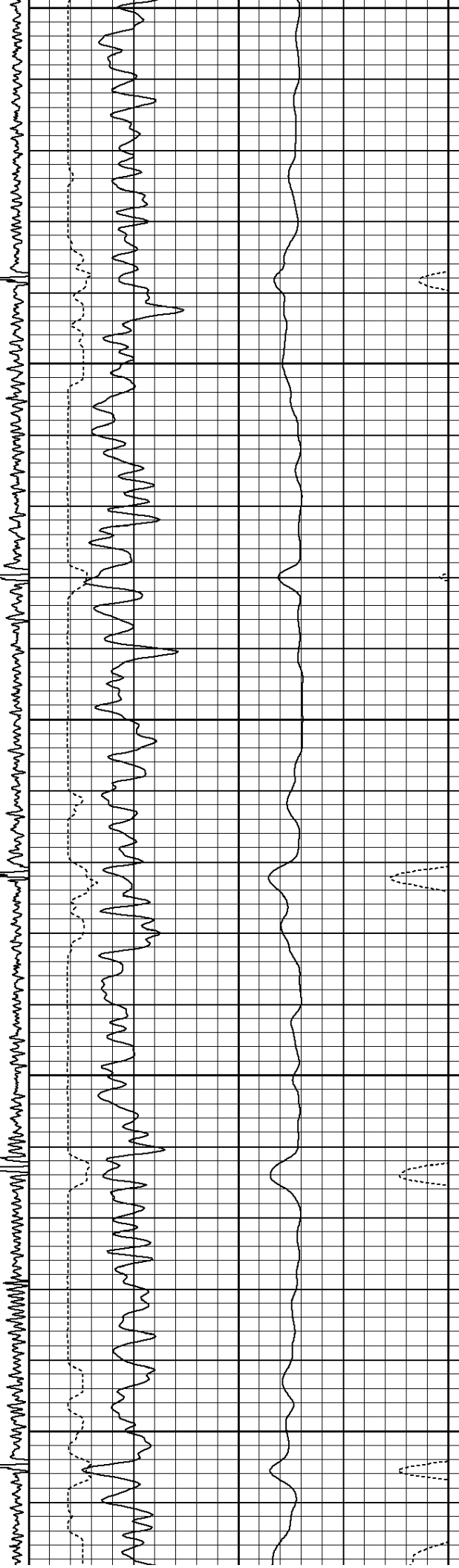




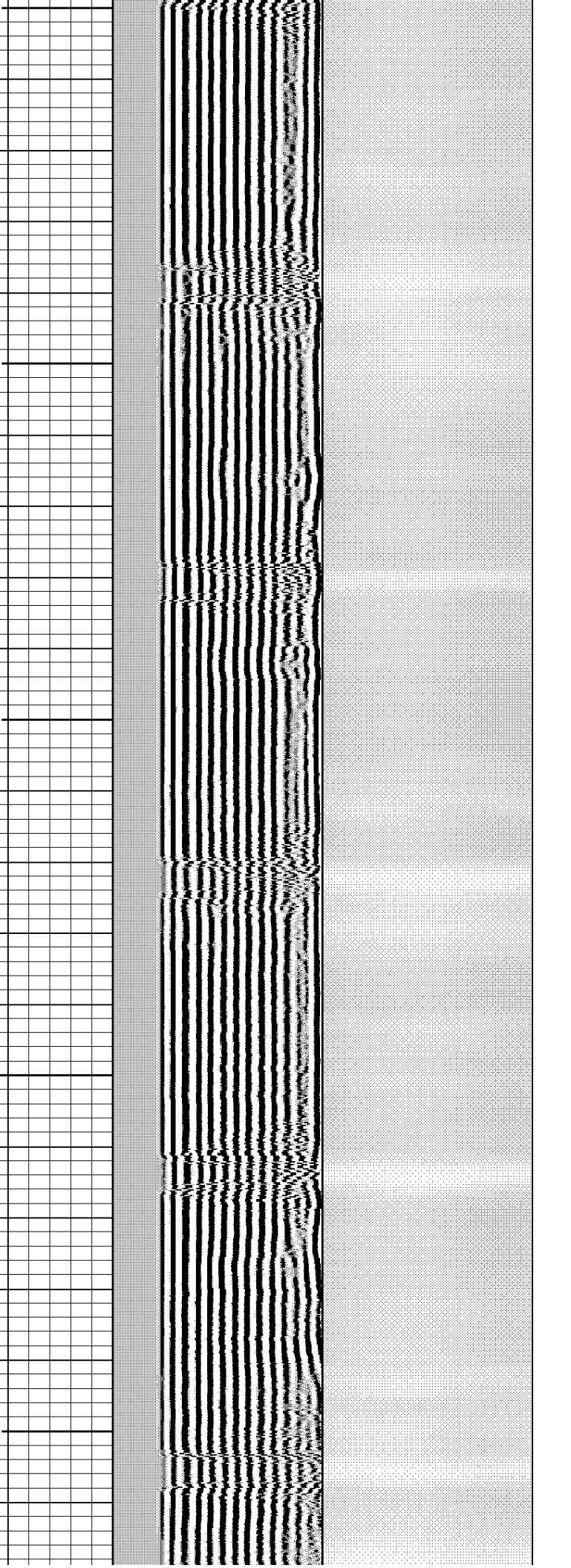


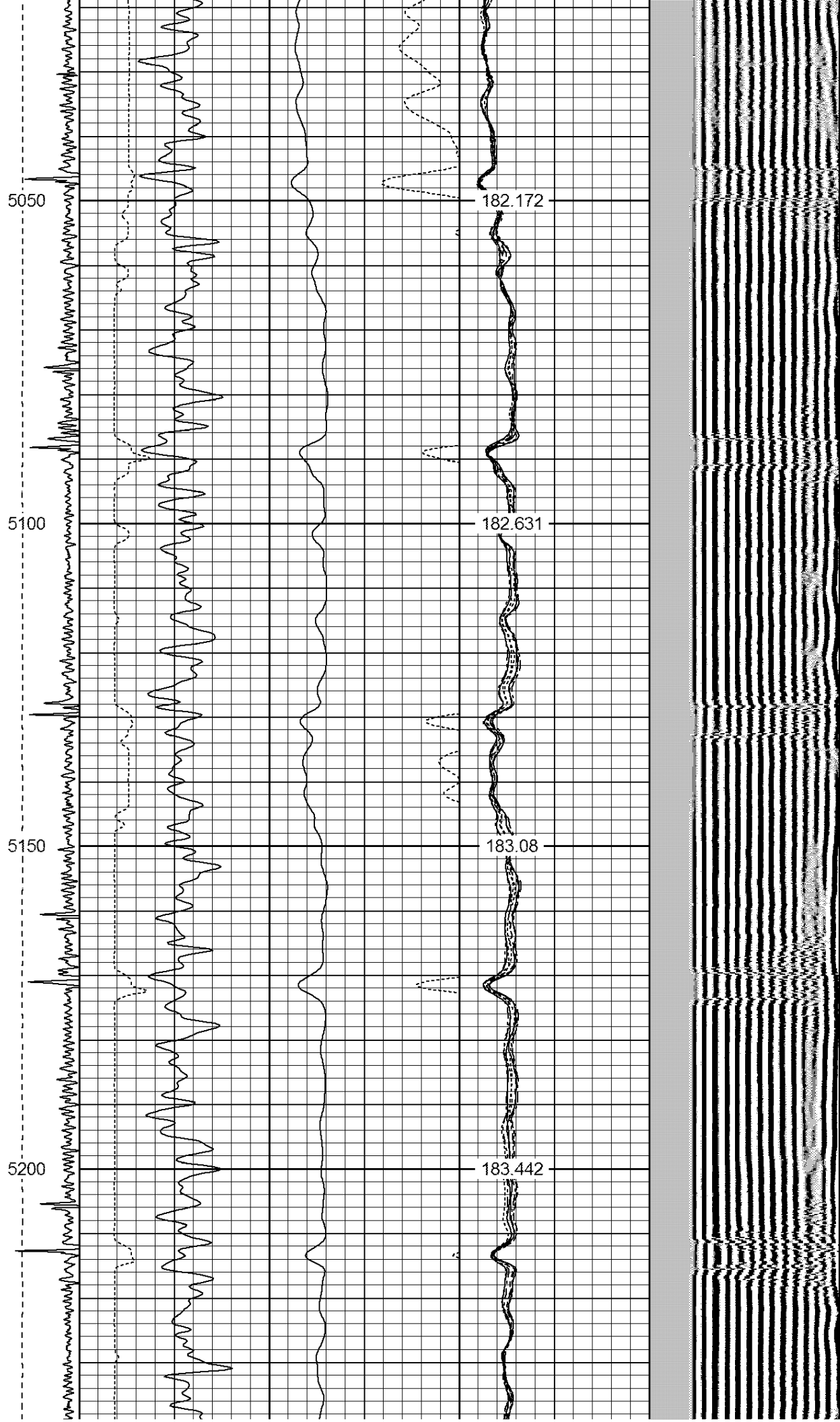


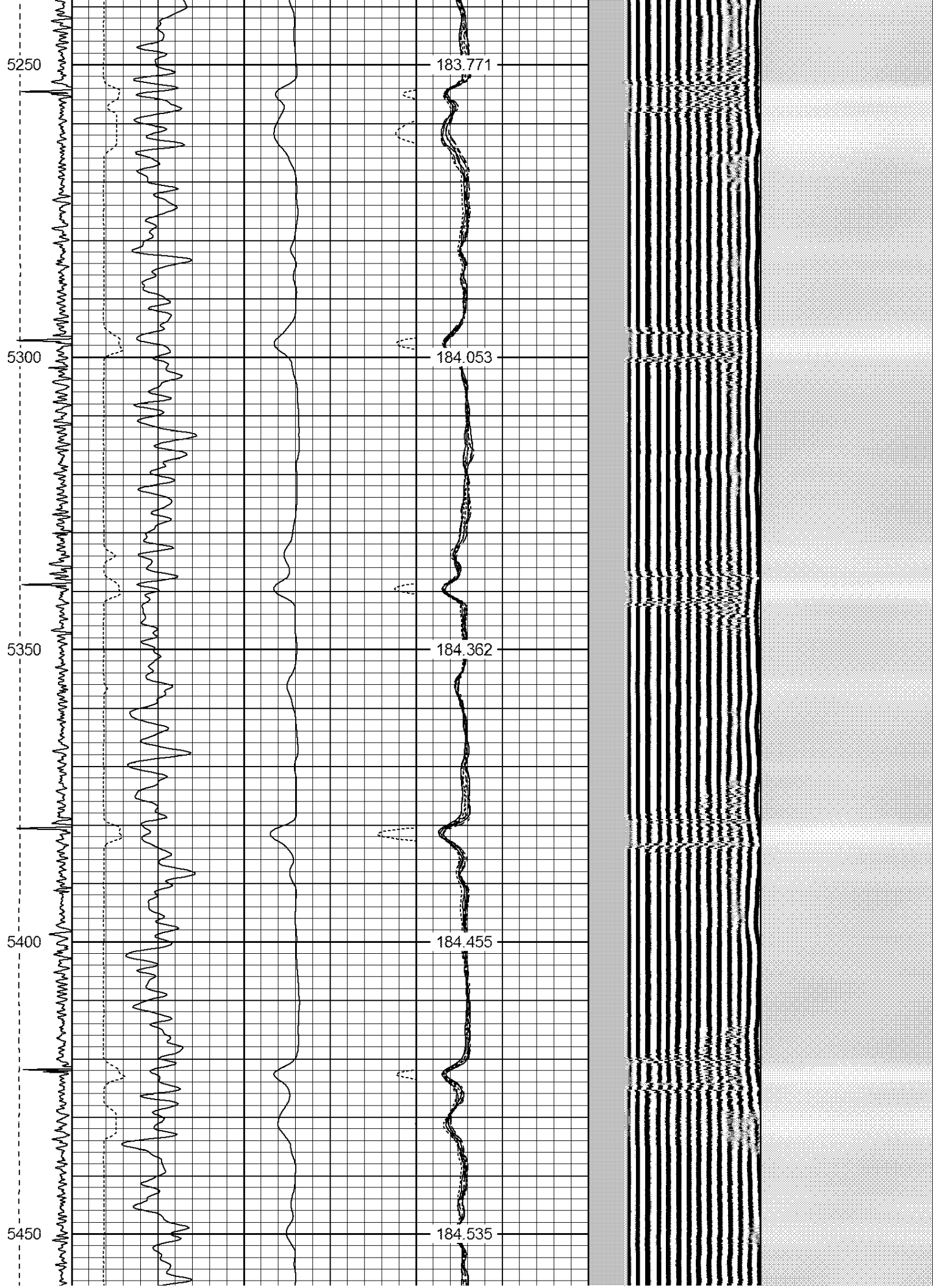
4800  
4850  
4900  
4950  
5000



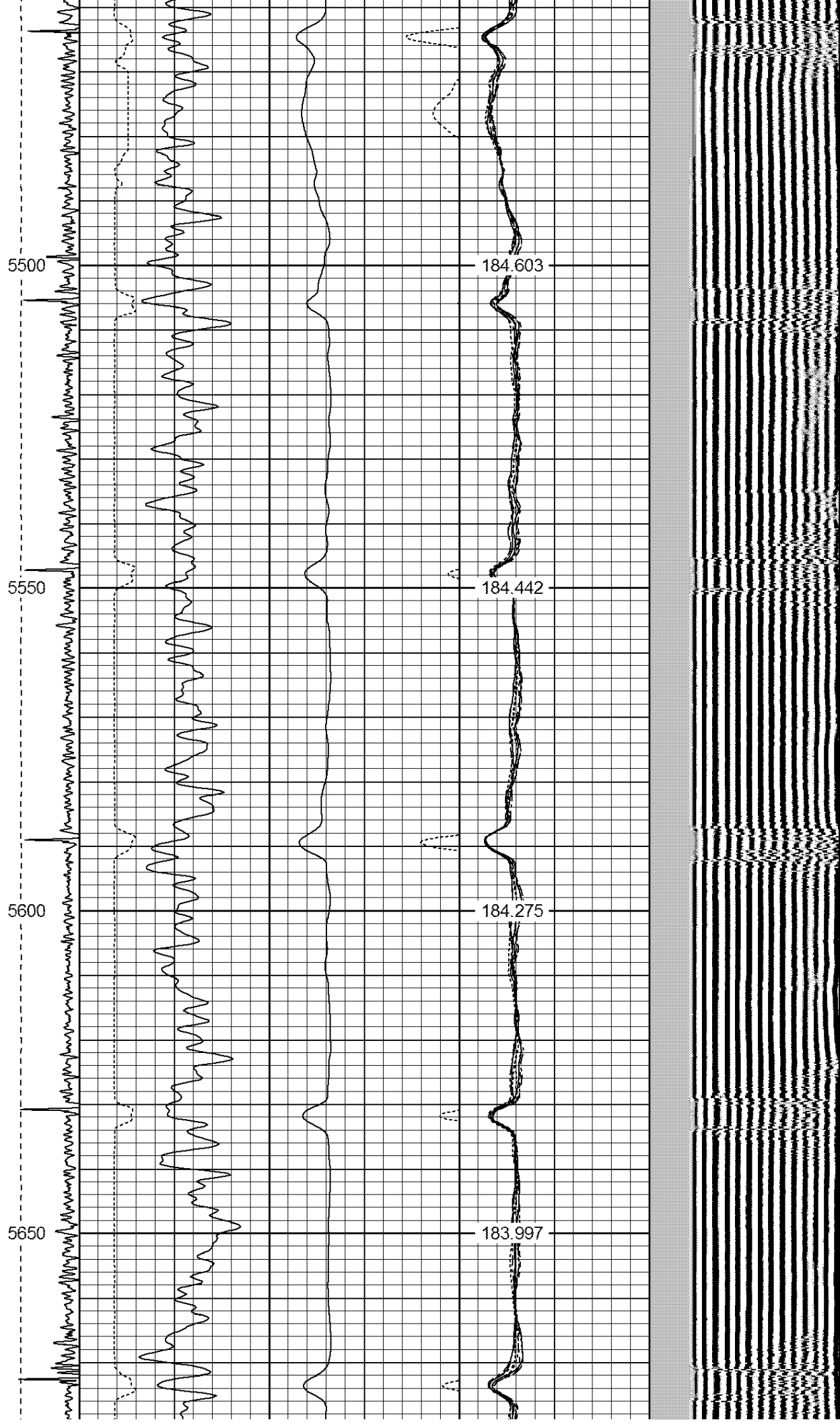
179.212  
179.891  
180.448  
181.03  
181.608











5700

183.579

5750

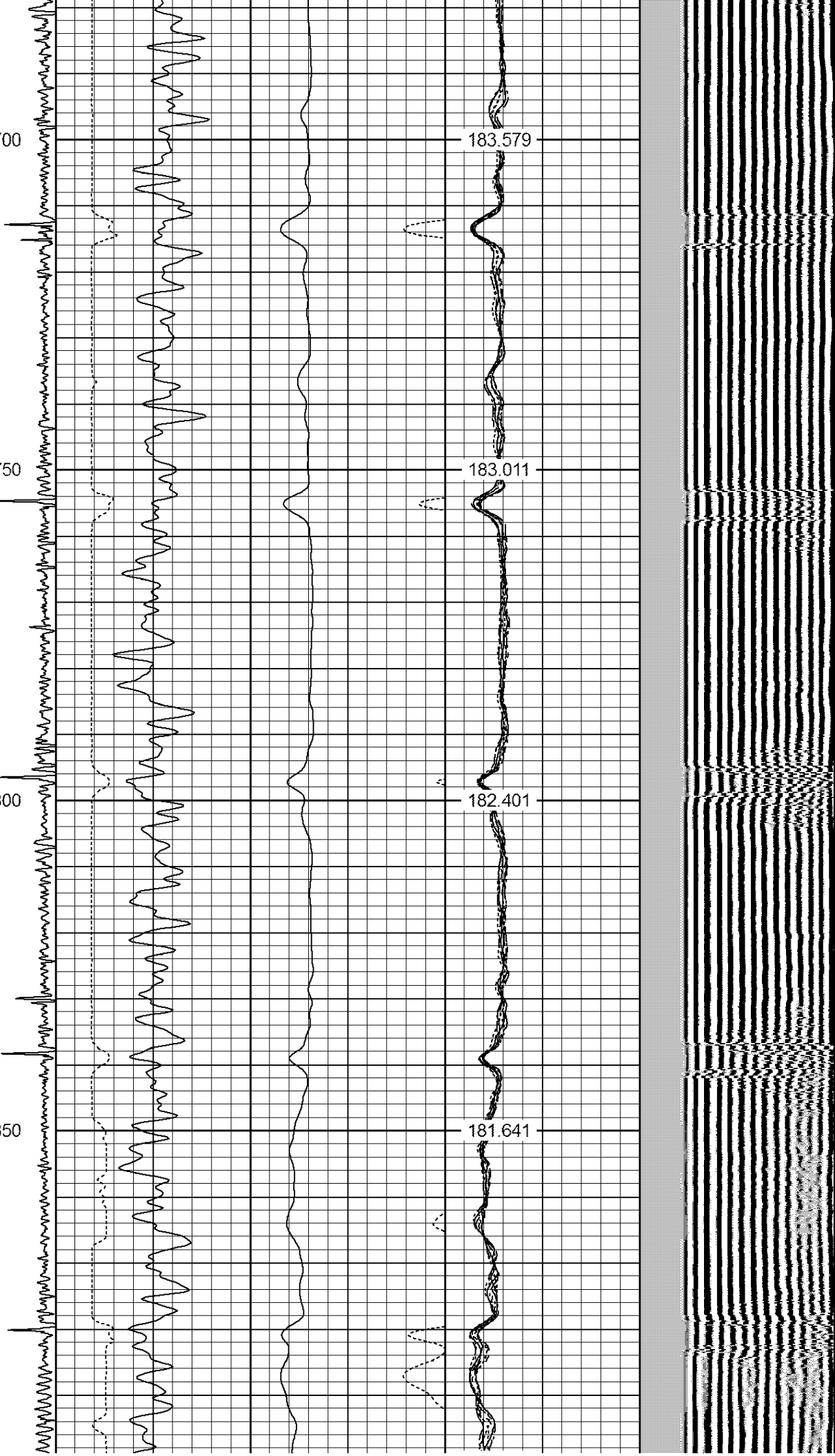
183.011

5800

182.401

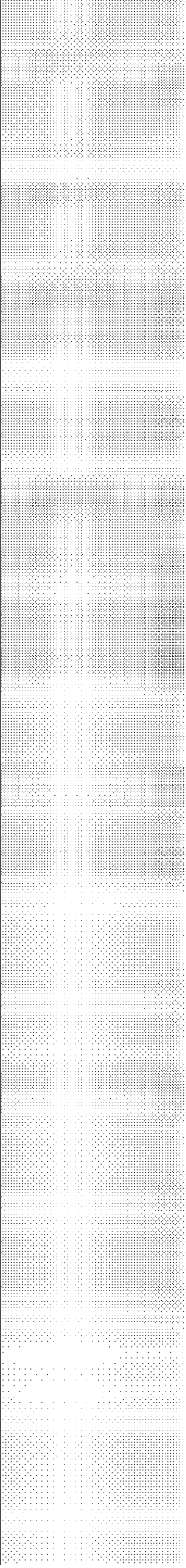
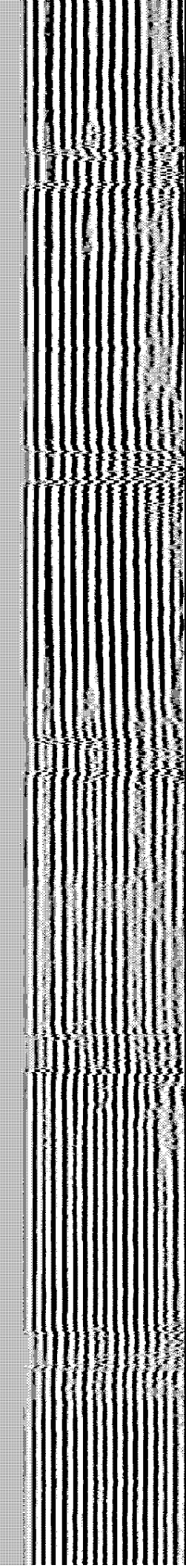
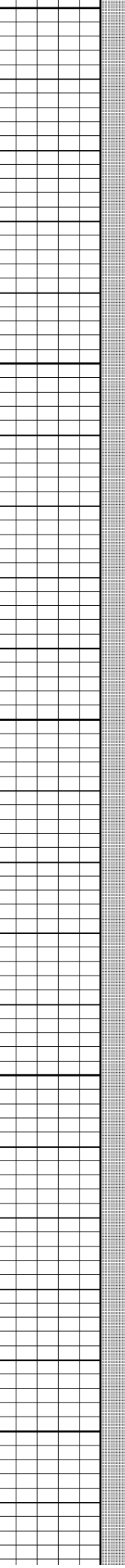
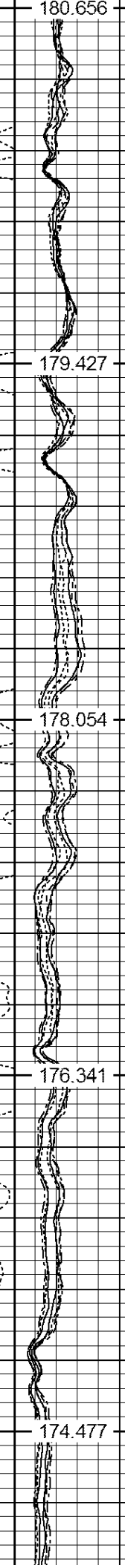
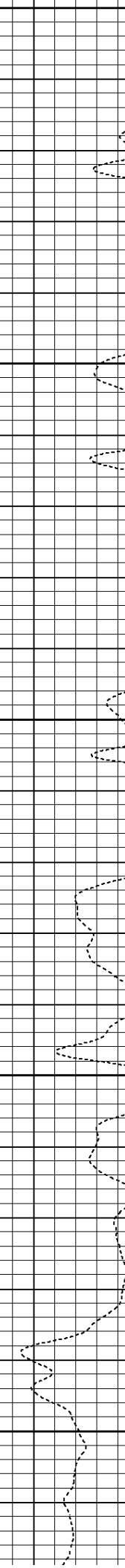
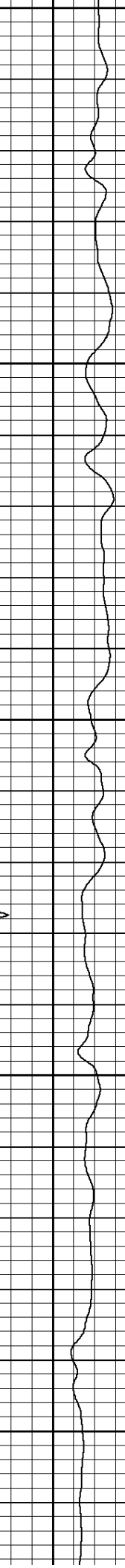
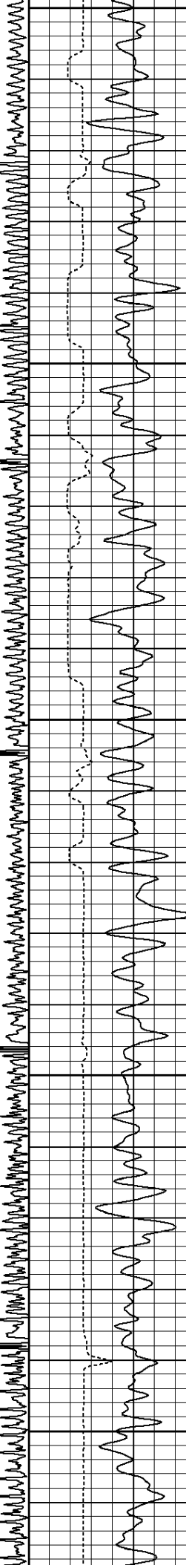
5850

181.641

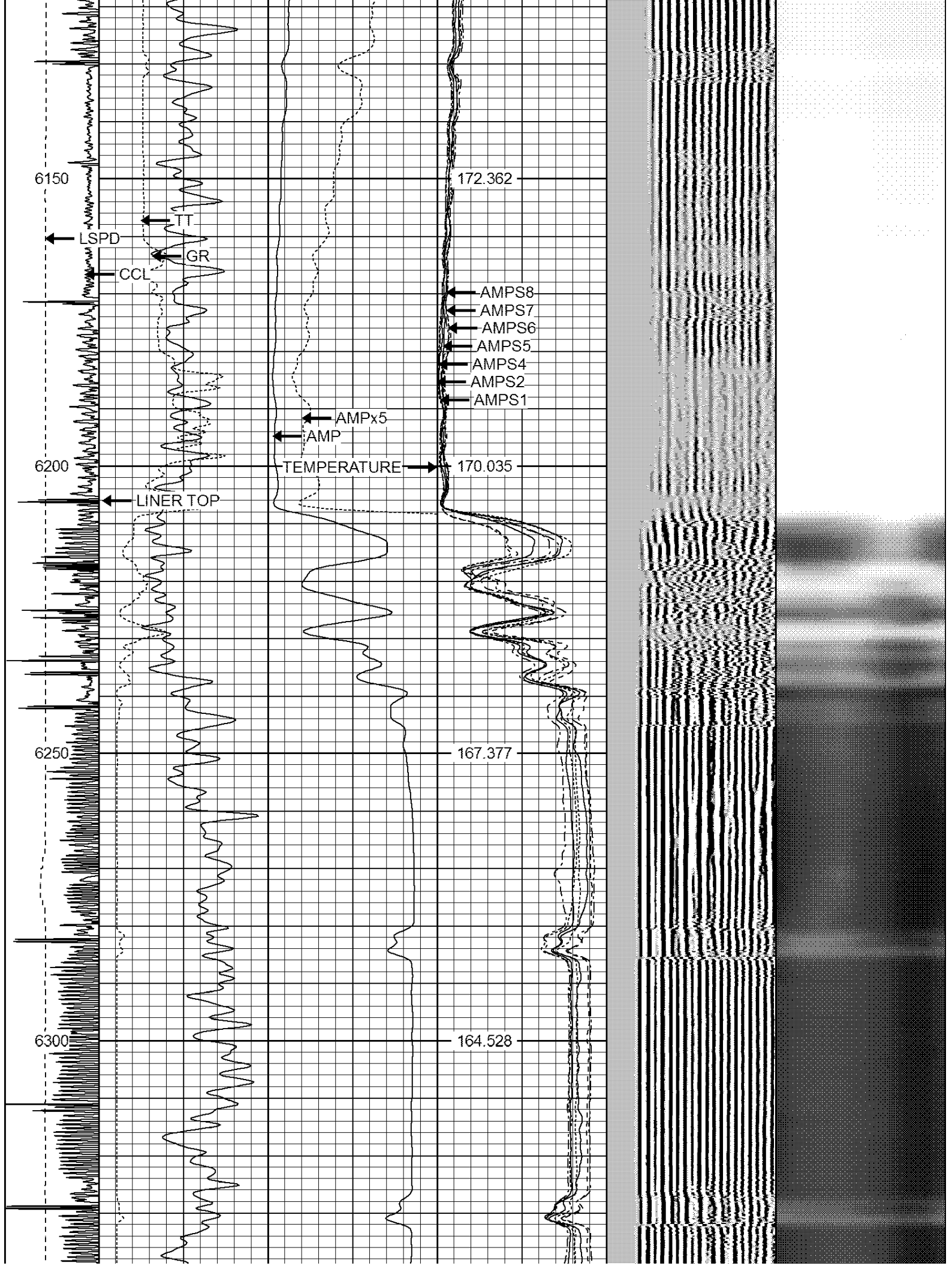


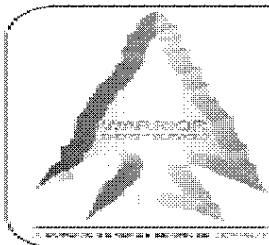
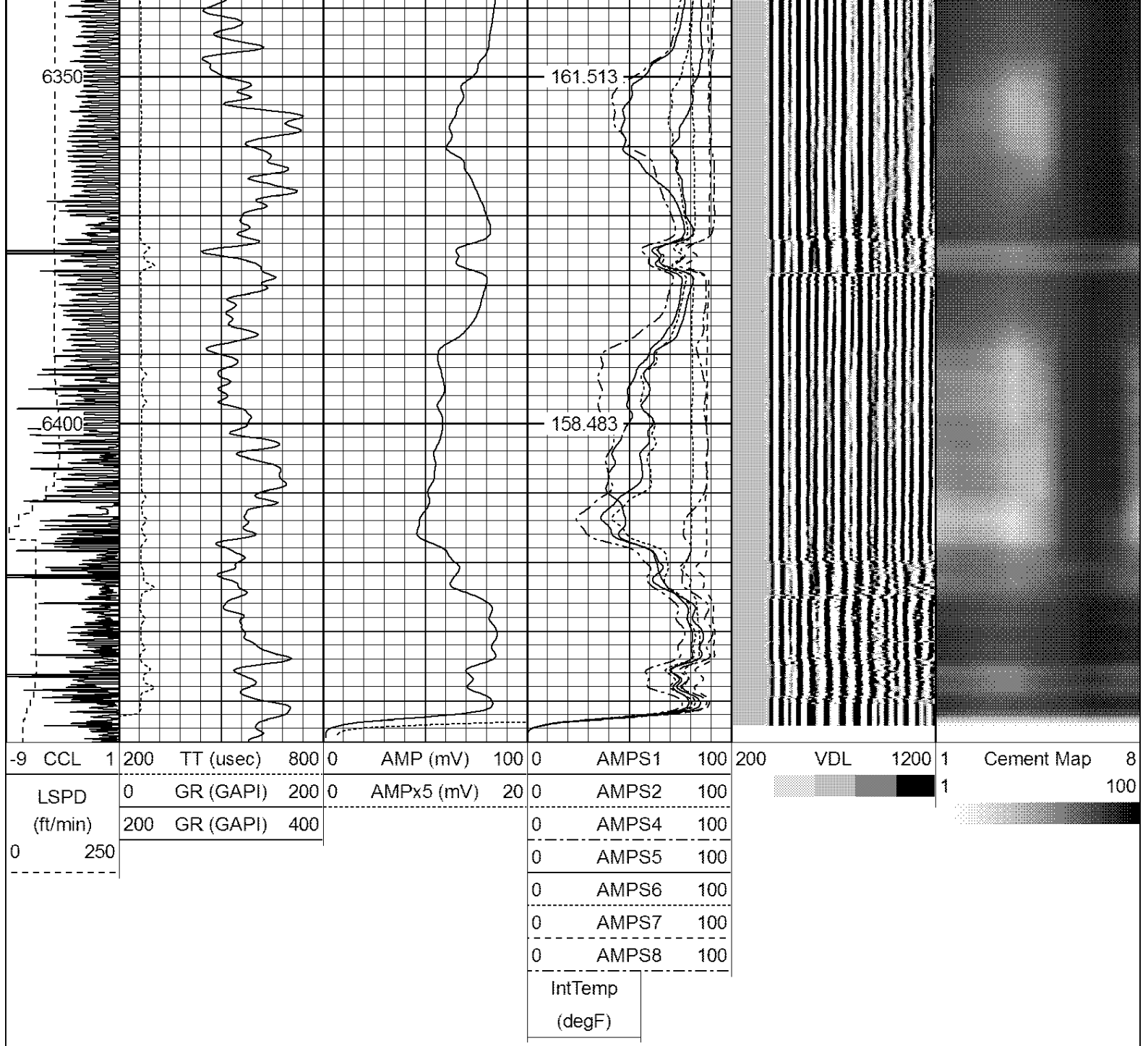


5900  
5950  
6000  
6050  
6100



180.656  
179.427  
178.054  
176.341  
174.477





**WARRIOR**  
ENERGY SERVICES

Company **BONANZA CREEK ENERGY**  
Well **LATHAM T-P-2HNB**  
Field **WATTENBERG**  
County **WELD**  
State **CO**