



Weatherford®

Tooke Rockies, Inc.
(A Weatherford Company)

884 Implement Dr.
Dickinson, ND 58601
701-227-4408

717 West Platte
PO BOX 435
Casper, WY 82601
307-265-2124

Surface Logging Systems

Scale 1:240 (5"=100') Imperial
Measured Depth Log

Well Name: Sky Ranch 4-65 9-10 1H(Build Sec.)

API: 05-005-07224-0000

Location: NE/NE, SEC 10 T4S-R65W,. Arapahoe County, CO

License Number:

Region: DJ Basin

Spud Date: 9/06/2014

Drilling Completed: x/xx/2014

Surface Coordinates: 660' FNL & 350' FEL. NE/NE, SEC 10 T4S-R65W, Arapahoe County, CO.

Bottom Hole From SHL, 660' FNL, 480' FWL, Sec. 9, T4S-R65W, Arapahoe County, CO.

Coordinates:

Ground Elevation (ft): 5675'

K.B. Elevation (ft): 5699'

Logged Interval (ft): 7200'

To: xxxx'

Total Depth (ft): xxxx'

Formation: Niobrara

Type of Drilling Fluid: INVERT/OBM

Printed by MUD.LOG from WellSight Systems 1-800-447-1534 www.WellSight.com

OPERATOR

Company: Conoco/Phillips

Address: Attn: Abby Tomkiewicz

Three Westlake Park, Rm 14013

550 Westlake Park Blvd, Houston, TX 77079, Office: 832-486-2543.

GEOLOGIST

Name: Bill Robin, Judith Esposito

Company: Tooke Rockies/ Weatherford SLS

Address: PO Box 435

Casper, WY. 82602

307.265.2124

Supervision

Project Geologist: Christian Marine- Conoco/Phillips

Drilling Engineer: Gary Hamilton, Ben Tolman, James Hayes- Conoco/Phillips

Drilling Sup: Bob Strickler- Conoco/Phillips

Company Rep: Richard Perez, Wes Evans, (Day Leads)

Company Rep: Clint Valentine, Mike Weatherly (Night Leads)

Well Site Safety: Rainey Schexnider, Gerald Doty

Contact Geologist: Abby Tomkiewicz, Abby Thornton- Conoco/Phillips

Drilling & Comp. Mgr: Derly Gonzalez-Conoco/Phillips

Comments

Drilling Co.--H & P, Rig #280

Toolpusher- Mike Stevens, Josh Coleman

Dir. Co.- Roland Hall, Luai Qubain- Halliburton/Sperry Drilling

MWD/LWD- Gregory ODonnell, Francisco Pauda-Halliburton/Sperry Drilling

Mud Co.- David Howell, Brent Sutherland- Baroid/Halliburton

ROCK TYPES

Anhy
Bent
Brec
Cht

Clyst
Coal
Congl
Dol

Gyp
Igne
Lmst
Meta

Mrlst
Salt
Shale
Shcol

Shgy
Sltst
Ss
Till

ACCESSORIES

MINERAL

Anhy
Arggrn
Arg
Bent
Bit
Brecfrag
Calc
Carb
Chtdk
Chtlt
Dol
Feldspar
Ferrpel
Ferr
Glau

Gyp
Hvymin
Kaol
Marl
Minxl
Nodule
Phos
Pyr
Salt
Sandy
Silt
Sil
Sulphur
Tuff

FOSSIL

Algae
Amph
Belm
Bioclst
Brach
Bryozoa
Cephal
Coral
Crin
Echin
Fish
Foram
Fossil
Gastro
Oolite

Ostra
Pelec
Pellet
Pisolite
Plant
Strom

STRINGER

Anhy
Arg
Bent
Coal
Dol
Gyp
Ls
Mrst

Sltstrg
Ssstrg

TEXTURE

Boundst
Chalky
Cryxln
Earthy
Finexln
Grainst
Lithogr
Microxln
Mudst
Packst
Wackest

OTHER SYMBOLS

INTERVALS

Core
Dst

EVENTS

Rft
Sidewall

POROSITY TYPE

Earthy
Fenest
Fracture
Inter
Moldic
Organic

Pinpoint
Vuggy

SORTING

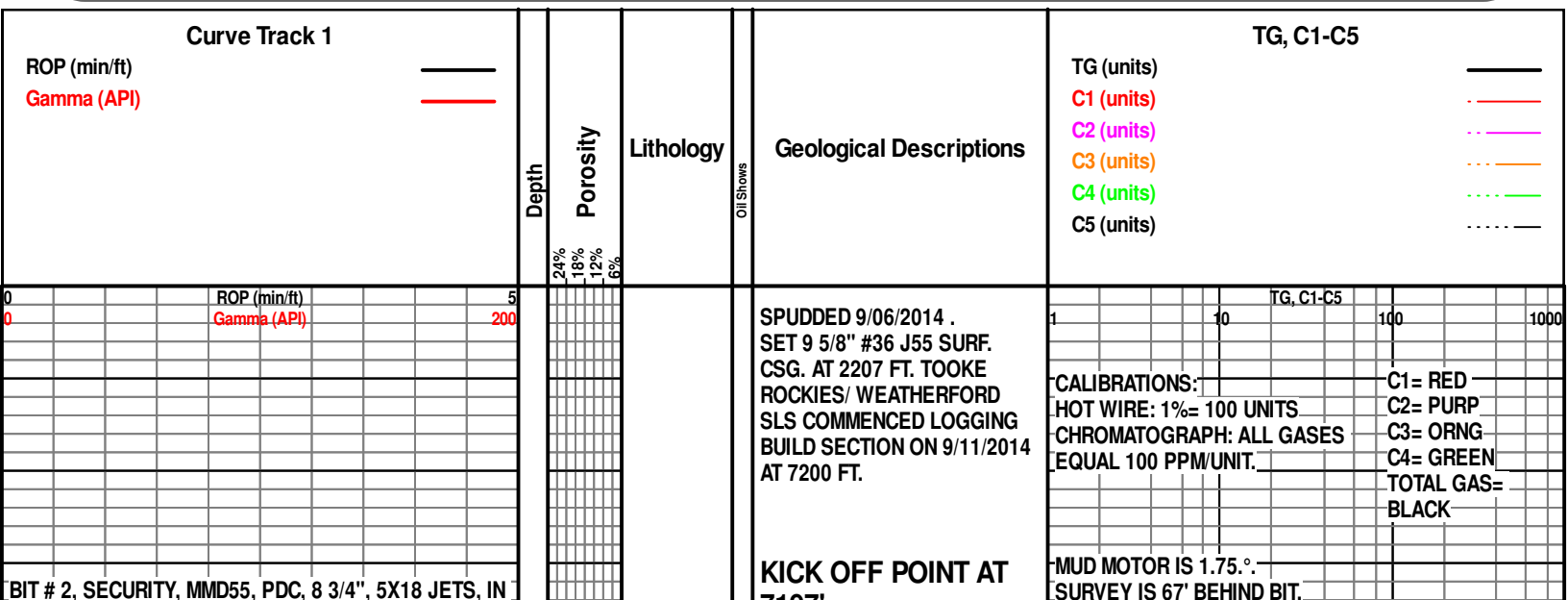
Well
Moderate
Poor

ROUNDING

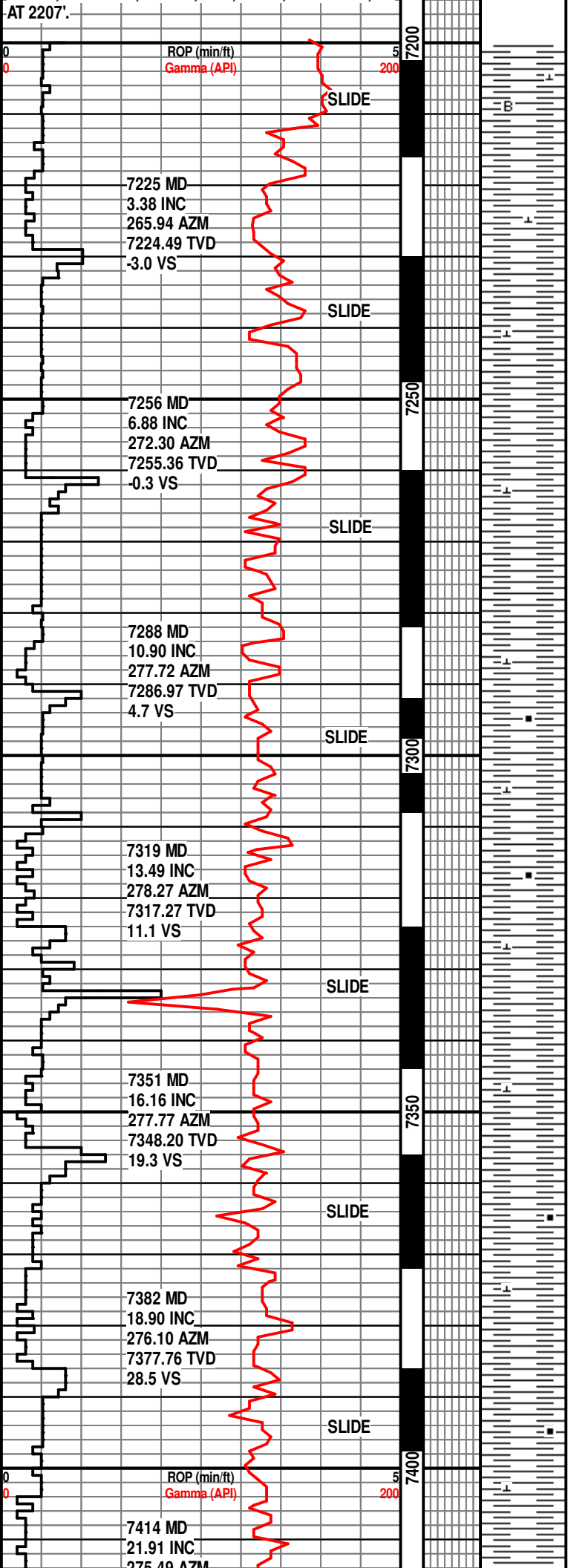
Rounded
Subrnd
Subang
Angular

OIL SHOWS

Even
Spotted
Ques
Dead



AT 2207'



7197'

SH- GY-BRN/GY, SFT-FRM,
BLKY-PLTY, RTHY, SL CALC,
BENT.

SH- GY-DK GY, FRM-HRD,
PLTY, RTHY, SL CALC.

SH-GY-DK GY, FRM-HRD,
PLTY-BLKY, RTHY, SL CALC.

SH- GY-DK GY, FRM-HRD,
BLKY-PLTY, RTHY, SL CALC.

SH- DK GY, SFT-FRM, BLKY,
PLTY, RTHY, SL CARB, SL
CALC.

SH- DK GY, SFT-FRM, BLKY,
RTHY-SBWXY, SL CARB, SL
CALC.

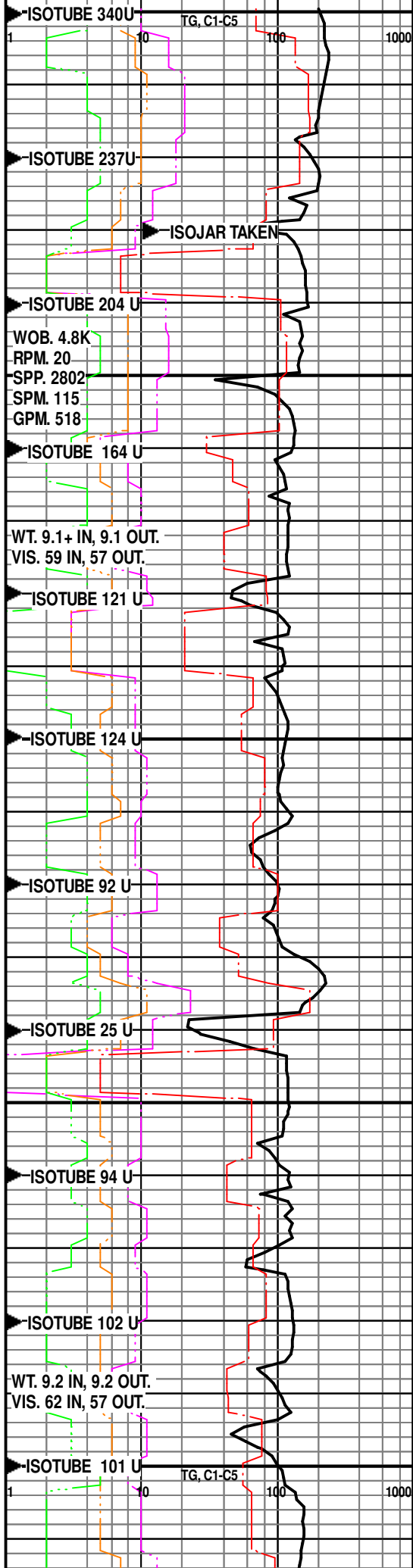
SH- DK GY, SFT-FRM, BLKY,
RTHY-SBWXY, SL CARB, SL
CALC.

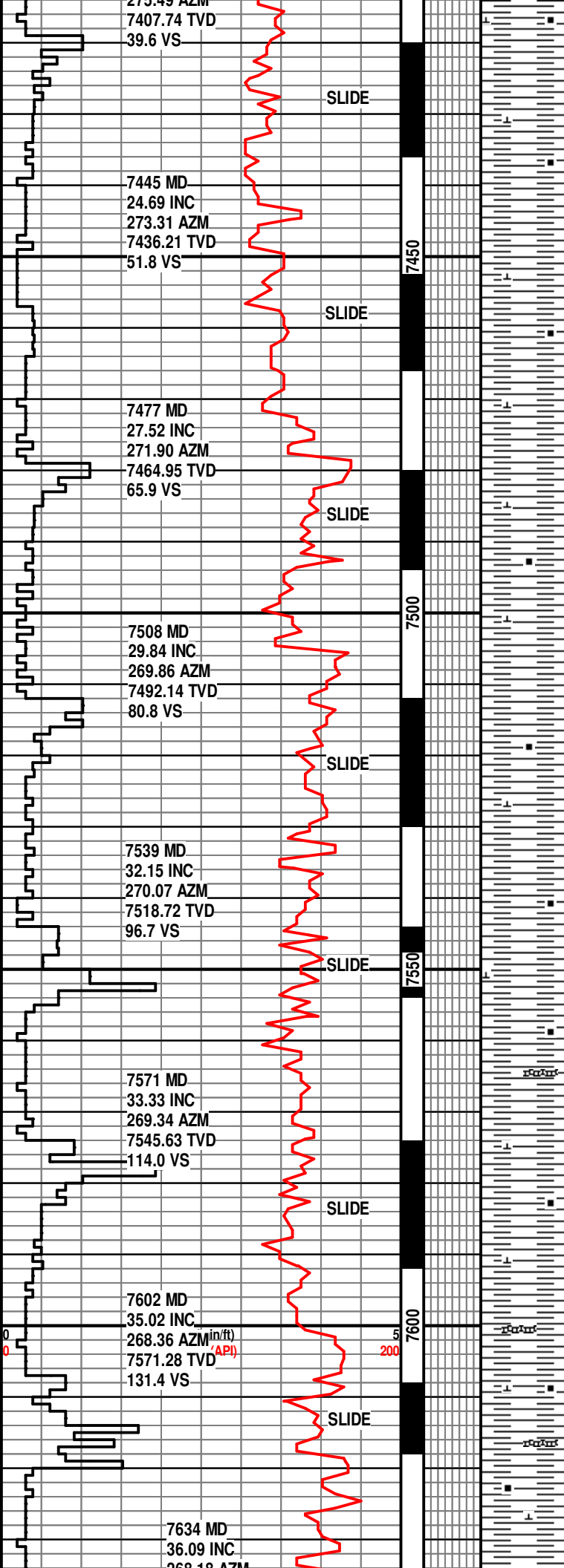
SH- DK GY, SFT-FRM, BLKY,
RTHY-SBWXY, SL CARB, SL
CALC.

SH- DK GY, SFT-FRM, BLKY,
RTHY-SBWXY, SL CARB, SL
CALC.

SH- DK GY, SFT-FRM, BLKY,
RTHY-SBWXY, SL CARB, SL
CALC.

GAMMA IS 31' BEHIND BIT.





SH- DK GY, SFT-FRM, BLKY,
RTHY-SBWXY, SL CARB, SL
CALC.

SH- DK GY, SFT-FRM, BLKY,
RTHY-SBWXY, SL CARB, SL
CALC.

SH- DK GY, SFT-FRM, BLKY,
RTHY-SBWXY, SL CARB, SL
CALC.

SH- DK GY, SFT-FRM, BLKY,
RTHY-SBWXY, SL CARB, SL
CALC.

SH- GY- DK GY, SFT-FRM,
BLKY, RTHY-SBWXY, SL
CARB, SL CALC.

SH- GY- DK GY, SFT-FRM,
BLKY, RTHY-SBWXY, SL
CARB, SL CALC.

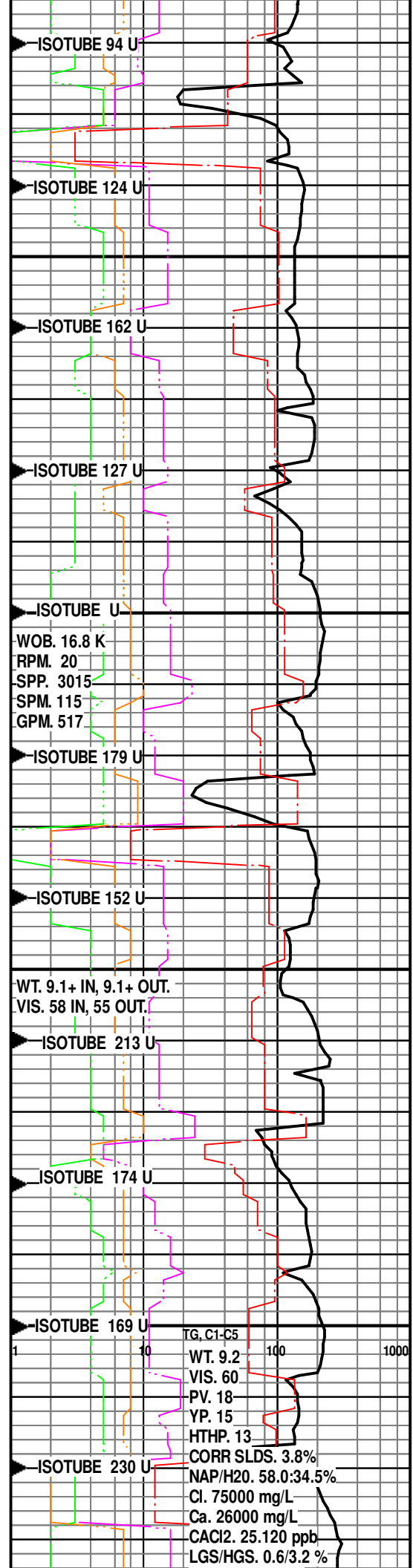
SH- GY- DK GY, SFT-FRM,
BLKY, RTHY-SBWXY, SL
CARB, CALC.

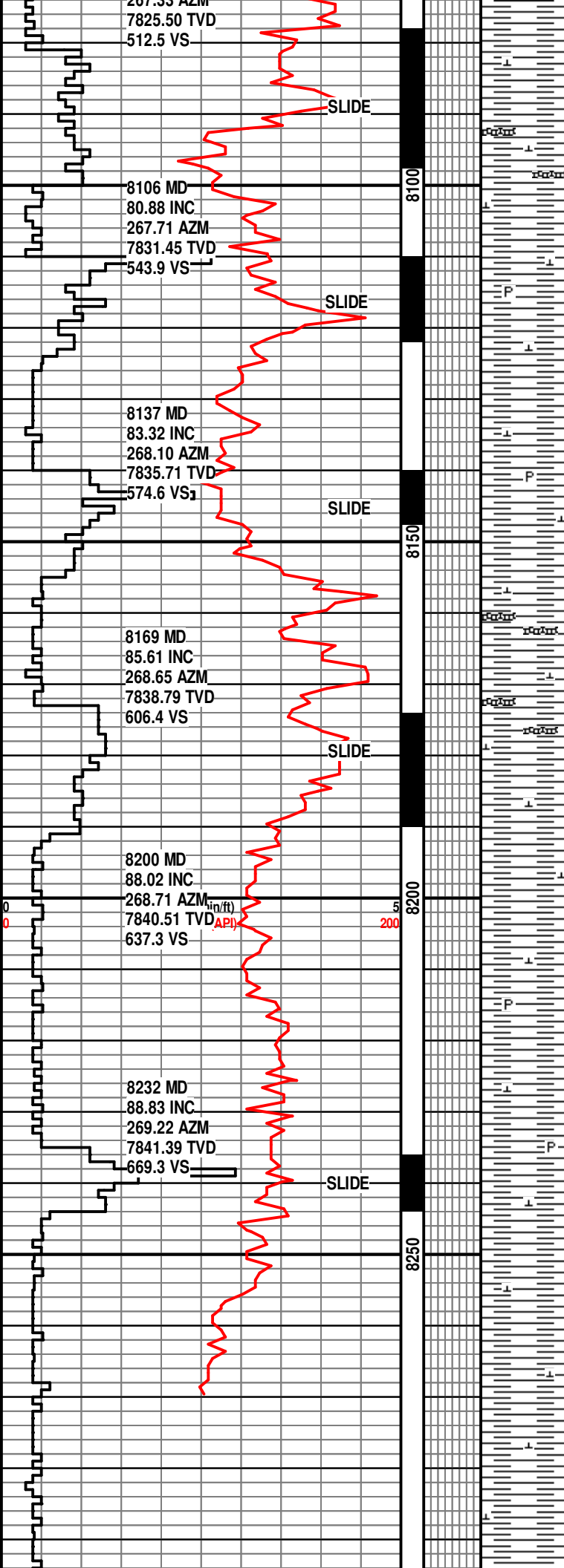
SH- DK GY-BLK, SME LT GY,
SFT-FRM, BLKY, SBWXY, SL
CARB, CALC. BENT- LT GY,
TAN.

SH- DK GY-BLK, SME LT GY,
SFT-FRM, BLKY, SBWXY, SL
CARB, CALC. BENT- LT GY,
TAN.

**SMPL TOP SHARON
SPRINGS AT 7601'.**

SH- DK GY-BLK, SME LT GY,
SFT-FRM, BLKY, SBWXY, SL
CARB, CALC. BENT- LT GY,
TAN.





SH- DK GY, FRM-HRD, BLKY, TR GY BENT INTBDS, COM WHT XLN CALCITE INCL, SB WXY-CHKY, CALC.

SH- DK GY-GY, FRM-HRD, BLKY-PLTY, SL LAM, COM WHT XLN CALCITE INCL, TR WHT CALCITE FLD FRACS, CHKY-SB WXY, V CALC, TR PYR NOD, TR YEL MNRL FLOR, FST YEL UNIFORM CUT.

SH- GY-DK GY, FRM-HRD, PLTY-FLKY, COM WHT XLN CALCITE INCL, CHKY, V CALC, TR PYR NOD, FNT SCAT YEL FLOR, SLW YEL UNIFORM CUT.

SH- GY-DK GY, FRM-HRD, PLTY-BLKY, TR WHT XLN CALCITE INCL, TR SFT GY BENT INTBDS, CHKY-SB WXY, V CALC, FNT YEL FLOR, SLW YEL UNIFORM CUT.

SH- DK GY-GY, FRM-HRD, PLTY-BLKY, COM WHT XLN CALCITE INCL, CHKY-SB WXY, CALC, TR PYR NOD, NO FLOR, MOD YEL UNIFORM CUT.

SH- DK GY-GY, FRM-HRD, PLTY-BLKY, COM WHT XLN CALCITE INCL, DULL-CHKY, CALC, TR PYR NOD, NO FLOR, FST WHT UNIFORM CUT.

LANDED THE CURVE AT 8244'.

SH- DK GY-GY, FRM-HRD, PLTY-BLKY, SL LAM, SME WHT XLN CALCITE INCL, SB WXY-CHKY, V CALC, TR YEL MNRL FLOR, SLW YEL STMG CUT, PALE YEL RESD CUT.

SH- GY-DK GY, FRM-HRD, BLKY-PLTY, COM WHT XLN CALCITE INCL, TR WHT CALCITE FLD FRACS, SB WXY-CHKY, V CALC, FNT SCAT

ISOTUBE 1283U

WT. 9.2 IN, 9.2 OUT.
VIS. 57 IN, 57 OUT.

ISOTUBE 1189 U

ISOTUBE 662 U

ISOTUBE 1678 U

ISOTUBE 839 U

ISOTUBE 513 U

WT. 9.1+ IN, 9.1+ OUT.
VIS. 56 IN, 54 OUT.

ISOTUBE 1102 U

ISOTUBE 1568 U

ISOTUBE 451 U

WOB. 7.4K
RPM. 20
SPP. 2781
SPM. 109
GPM. 491

ISOJAR TAKEN

ISOTUBE 1419 U

ISOTUBE 1246 U

WT. 9.2 IN, 9.1+ OUT.

YEL FLOR, SLW YEL STMG CUT.

TD THE BUILD
SECTION AT 8299' MD
ON 9/12/2014 AT
10:45 AM.
DRILLERS DEPTH

Please refer to the Horizontal
Log for the remainder of this
well

ISOTUBE 1675 U