

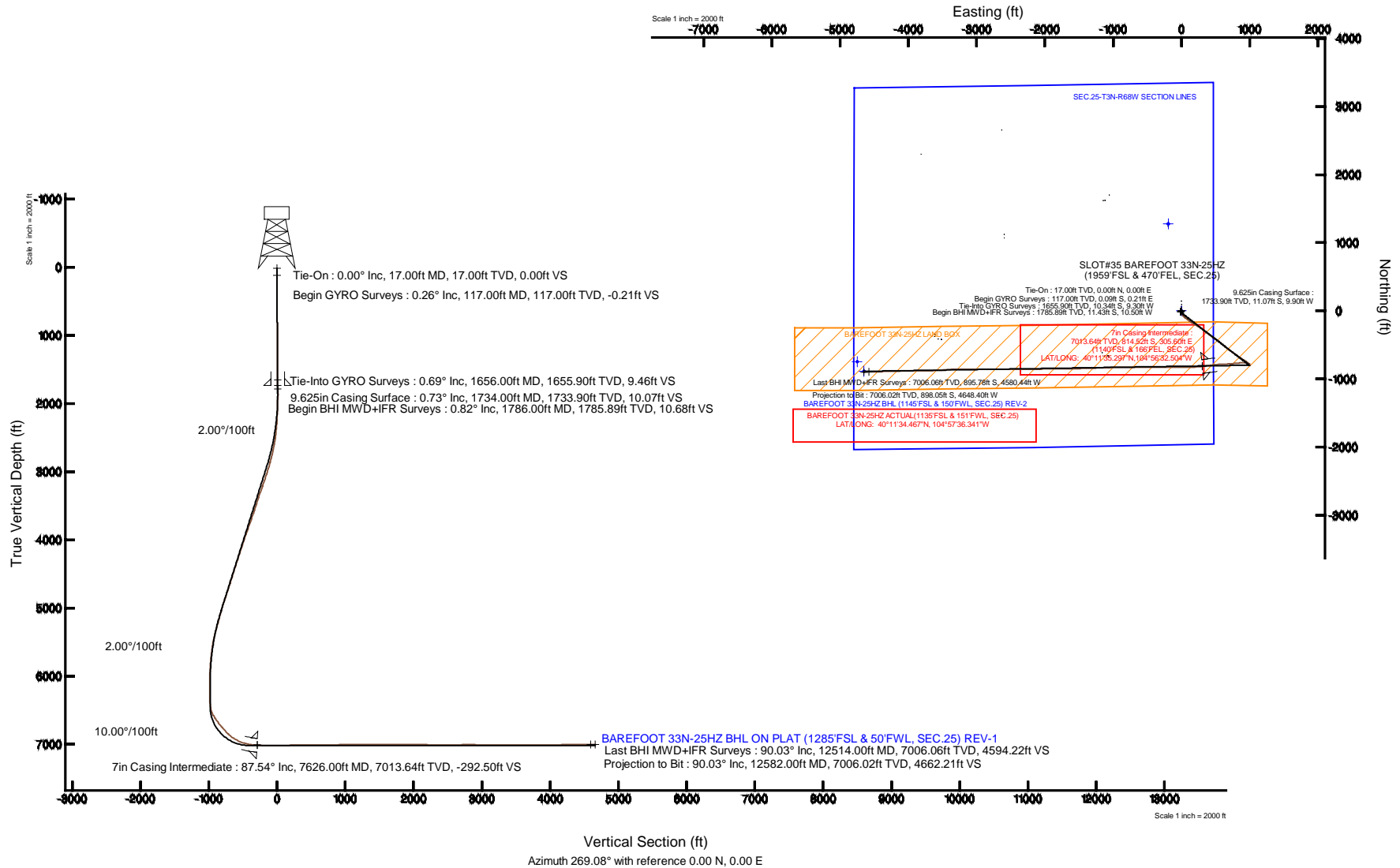
KERR-MCGEE OIL & GAS ONSHORE LP

Location: COLORADO Slot: SLOT#35 BAREFOOT 33N-25HZ (1959FSL & 470'FEL, SEC.25)
 Field: WELD COUNTY (KERR MCGEE) Well: BAREFOOT 33N-25HZ
 Facility: SEC.25-T3N-R68W Wellbore: BAREFOOT 33N-25HZ PWB



Plot reference wellpath is BAREFOOT 33N-25HZ (REV-A.1) PWB

True vertical depths are referenced to Rig on SLOT#34 BAREFOOT 33N-25HZ (RT)	Grid System: NAD83 / Lambert Colorado SP, Northern Zone (501), US feet
Measured depths are referenced to Rig on SLOT#34 BAREFOOT 33N-25HZ (RT)	North Reference: True north
Rig on SLOT#34 BAREFOOT 33N-25HZ (RT) to Mean Sea Level: 4888 feet	Scale: True distance
Mean Sea Level to Mud line (At Slot: SLOT#35 BAREFOOT 33N-25HZ (1959FSL & 470'FEL, SEC.25)): 0 feet	Depths are in feet
Coordinates are in feet referenced to Slot	Created by: precin on 15/Sep/2014



Actual Wellpath Report

BAREFOOT 33N-25HZ PWP

Page 1 of 7

REFERENCE WELLPATH IDENTIFICATION			
Operator	KERR-MCGEE OIL & GAS ONSHORE LP	Slot	SLOT#35 BAREFOOT 33N-25HZ (1959'FSL & 470'FEL, SEC.25)
Area	COLORADO	Well	BAREFOOT 33N-25HZ
Field	WELD COUNTY (KERR MCGEE)	Wellbore	BAREFOOT 33N-25HZ AWB
Facility	SEC.25-T3N-R68W		

REPORT SETUP INFORMATION			
Projection System	NAD83 / Lambert Colorado SP, Northern Zone (501), US feet	Software System	WellArchitect® 4.0.0
North Reference	True	User	Precain
Scale	0.999957	Report Generated	15/Sep/2014 at 16:23
Convergence at slot	n/a	Database/Source file	WellArchitectDB/BAREFOOT_33N-25HZ_AWB.xml

WELLPATH LOCATION						
	Local coordinates		Grid coordinates		Geographic coordinates	
	North[ft]	East[ft]	Easting[US ft]	Northing[US ft]	Latitude	Longitude
Slot Location	-1714.41	1059.88	3155470.07	1314505.13	40°11'43.346"N	104°56'36.442"W
Facility Reference Pt			3154399.57	1316212.82	40°12'00.288"N	104°56'50.100"W
Field Reference Pt			3197771.84	1268891.29	40°04'09.600"N	104°47'36.000"W

WELLPATH DATUM			
Calculation method	Minimum curvature	Rig on SLOT#34 BAREFOOT 33N-25HZ (RT) to Facility Vertical Datum	4888.00ft
Horizontal Reference Pt	Slot	Rig on SLOT#34 BAREFOOT 33N-25HZ (RT) to Mean Sea Level	4888.00ft
Vertical Reference Pt	Rig on SLOT#34 BAREFOOT 33N-25HZ (RT)	Rig on SLOT#34 BAREFOOT 33N-25HZ (RT) to Mud Line at Slot (SLOT#35 BAREFOOT 33N-25HZ (1959'FSL & 470'FEL, SEC.25))	4888.00ft
MD Reference Pt	Rig on SLOT#34 BAREFOOT 33N-25HZ (RT)	Section Origin	N 0.00, E 0.00 ft
Field Vertical Reference	Mean Sea Level	Section Azimuth	269.08°

Actual Wellpath Report

BAREFOOT 33N-25HZ PWP

Page 2 of 7

REFERENCE WELLPATH IDENTIFICATION

Operator	KERR-MCGEE OIL & GAS ONSHORE LP	Slot	SLOT#35 BAREFOOT 33N-25HZ (1959'FSL & 470'FEL, SEC.25)
Area	COLORADO	Well	BAREFOOT 33N-25HZ
Field	WELD COUNTY (KERR MCGEE)	Wellbore	BAREFOOT 33N-25HZ AWB
Facility	SEC.25-T3N-R68W		

WELLPATH DATA (156 stations) † = interpolated/extrapolated station

MD [ft]	Inclination [°]	Azimuth [°]	TVD [ft]	Vert Sect [ft]	North [ft]	East [ft]	Latitude	Longitude	DLS [°/100ft]	Comments
0.00†	0.000	112.940	0.00	0.00	0.00	0.00	40°11'43.346"N	104°56'36.442"W	0.00	
17.00	0.000	112.940	17.00	0.00	0.00	0.00	40°11'43.346"N	104°56'36.442"W	0.00	Tie-On
117.00	0.260	112.940	117.00	-0.21	-0.09	0.21	40°11'43.345"N	104°56'36.439"W	0.26	Begin GYRO Surveys
217.00	0.100	27.820	217.00	-0.46	-0.10	0.46	40°11'43.345"N	104°56'36.436"W	0.27	
317.00	0.170	318.890	317.00	-0.40	0.09	0.40	40°11'43.347"N	104°56'36.437"W	0.16	
417.00	0.160	262.810	417.00	-0.17	0.18	0.17	40°11'43.348"N	104°56'36.440"W	0.16	
517.00	0.430	270.500	517.00	0.35	0.17	-0.35	40°11'43.348"N	104°56'36.446"W	0.27	
617.00	0.590	257.130	616.99	1.22	0.06	-1.23	40°11'43.347"N	104°56'36.458"W	0.20	
717.00	0.700	237.730	716.99	2.25	-0.38	-2.24	40°11'43.342"N	104°56'36.471"W	0.24	
817.00	0.830	240.310	816.98	3.41	-1.07	-3.39	40°11'43.335"N	104°56'36.486"W	0.13	
917.00	0.890	228.750	916.97	4.63	-1.94	-4.60	40°11'43.327"N	104°56'36.501"W	0.18	
1017.00	0.930	218.740	1016.95	5.74	-3.08	-5.69	40°11'43.316"N	104°56'36.515"W	0.16	
1117.00	0.860	212.360	1116.94	6.67	-4.35	-6.60	40°11'43.303"N	104°56'36.527"W	0.12	
1217.00	0.790	203.020	1216.93	7.36	-5.62	-7.27	40°11'43.290"N	104°56'36.536"W	0.15	
1317.00	0.720	202.610	1316.92	7.89	-6.83	-7.79	40°11'43.278"N	104°56'36.542"W	0.07	
1417.00	0.690	199.610	1416.92	8.36	-7.98	-8.23	40°11'43.267"N	104°56'36.548"W	0.05	
1517.00	0.590	203.560	1516.91	8.78	-9.02	-8.64	40°11'43.257"N	104°56'36.553"W	0.11	
1617.00	0.600	208.730	1616.90	9.25	-9.95	-9.10	40°11'43.248"N	104°56'36.559"W	0.05	
1656.00	0.690	206.690	1655.90	9.46	-10.34	-9.30	40°11'43.244"N	104°56'36.562"W	0.24	Tie-Into GYRO Surveys
1786.00	0.820	245.300	1785.89	10.68	-11.43	-10.50	40°11'43.233"N	104°56'36.577"W	0.40	Begin BHI MWD+IFR Surveys
1876.00	1.250	179.660	1875.88	11.28	-12.68	-11.07	40°11'43.221"N	104°56'36.585"W	1.31	
1968.00	2.560	148.750	1967.83	10.25	-15.44	-10.00	40°11'43.193"N	104°56'36.571"W	1.76	
2059.00	3.540	142.020	2058.70	7.53	-19.39	-7.22	40°11'43.154"N	104°56'36.535"W	1.14	
2150.00	4.880	151.420	2149.45	4.04	-25.00	-3.64	40°11'43.099"N	104°56'36.489"W	1.65	
2242.00	6.500	148.680	2241.00	-0.41	-32.89	0.94	40°11'43.021"N	104°56'36.430"W	1.78	
2333.00	8.550	148.060	2331.21	-6.51	-43.03	7.20	40°11'42.921"N	104°56'36.349"W	2.25	
2425.00	10.300	143.150	2421.96	-14.86	-55.42	15.75	40°11'42.798"N	104°56'36.239"W	2.09	
2516.00	12.740	139.840	2511.12	-25.98	-69.60	27.10	40°11'42.658"N	104°56'36.093"W	2.78	
2607.00	14.830	135.050	2599.50	-40.42	-85.51	41.80	40°11'42.501"N	104°56'35.903"W	2.62	
2699.00	16.480	132.030	2688.09	-58.16	-102.58	59.81	40°11'42.332"N	104°56'35.671"W	2.00	
2791.00	17.560	126.180	2776.06	-78.78	-119.51	80.71	40°11'42.165"N	104°56'35.402"W	2.20	
2883.00	18.680	128.170	2863.50	-101.29	-136.81	103.50	40°11'41.994"N	104°56'35.108"W	1.39	
2975.00	20.800	127.340	2950.09	-125.55	-155.83	128.07	40°11'41.806"N	104°56'34.792"W	2.32	
3067.00	21.240	123.170	3035.97	-152.18	-174.85	155.01	40°11'41.618"N	104°56'34.445"W	1.69	
3159.00	21.820	120.570	3121.55	-180.57	-192.67	183.68	40°11'41.442"N	104°56'34.075"W	1.21	
3251.00	22.090	118.920	3206.88	-210.15	-209.73	213.54	40°11'41.273"N	104°56'33.690"W	0.73	
3343.00	22.420	120.620	3292.03	-240.11	-227.03	243.78	40°11'41.102"N	104°56'33.301"W	0.79	
3428.00	22.370	123.800	3370.62	-267.22	-244.29	271.17	40°11'40.932"N	104°56'32.948"W	1.43	
3515.00	21.790	130.660	3451.25	-292.91	-264.02	297.19	40°11'40.737"N	104°56'32.612"W	3.04	
3601.00	22.760	128.590	3530.84	-317.69	-284.80	322.30	40°11'40.532"N	104°56'32.289"W	1.45	
3686.00	23.820	125.900	3608.91	-344.12	-305.12	349.05	40°11'40.331"N	104°56'31.944"W	1.77	
3771.00	22.780	124.930	3686.98	-371.20	-324.61	376.45	40°11'40.138"N	104°56'31.591"W	1.30	
3856.00	24.720	126.380	3764.78	-398.67	-344.57	404.25	40°11'39.941"N	104°56'31.233"W	2.38	
3942.00	24.550	126.490	3842.95	-427.17	-365.86	433.09	40°11'39.731"N	104°56'30.861"W	0.20	
4027.00	23.860	126.770	3920.48	-454.80	-386.65	461.06	40°11'39.525"N	104°56'30.501"W	0.82	

Actual Wellpath Report

BAREFOOT 33N-25HZ PWP

Page 3 of 7

REFERENCE WELLPATH IDENTIFICATION			
Operator	KERR-MCGEE OIL & GAS ONSHORE LP	Slot	SLOT#35 BAREFOOT 33N-25HZ (1959'FSL & 470'FEL, SEC.25)
Area	COLORADO	Well	BAREFOOT 33N-25HZ
Field	WELD COUNTY (KERR MCGEE)	Wellbore	BAREFOOT 33N-25HZ AWB
Facility	SEC.25-T3N-R68W		

WELLPATH DATA (156 stations)

MD [ft]	Inclination [°]	Azimuth [°]	TVD [ft]	Vert Sect [ft]	North [ft]	East [ft]	Latitude	Longitude	DLS [°/100ft]	Comments
4114.00	21.970	125.430	4000.61	-481.84	-406.62	488.42	40°11'39.328"N	104°56'30.148"W	2.25	
4202.00	21.940	123.740	4082.23	-508.62	-425.30	515.50	40°11'39.143"N	104°56'29.799"W	0.72	
4287.00	22.570	127.580	4160.90	-534.45	-444.07	541.64	40°11'38.958"N	104°56'29.462"W	1.86	
4372.00	23.600	130.180	4239.09	-560.04	-464.99	567.57	40°11'38.751"N	104°56'29.128"W	1.70	
4457.00	23.520	130.940	4317.01	-585.49	-487.09	593.38	40°11'38.533"N	104°56'28.796"W	0.37	
4543.00	22.880	130.990	4396.05	-610.71	-509.30	618.96	40°11'38.313"N	104°56'28.466"W	0.74	
4630.00	21.730	131.030	4476.54	-635.28	-530.96	643.88	40°11'38.099"N	104°56'28.145"W	1.32	
4715.00	22.080	127.600	4555.41	-659.48	-551.04	668.41	40°11'37.901"N	104°56'27.829"W	1.56	
4802.00	22.520	124.940	4635.90	-685.78	-570.56	695.02	40°11'37.708"N	104°56'27.486"W	1.27	
4887.00	22.510	125.280	4714.42	-712.10	-589.28	721.65	40°11'37.523"N	104°56'27.143"W	0.15	
4973.00	21.450	125.170	4794.17	-738.09	-607.85	747.94	40°11'37.339"N	104°56'26.804"W	1.23	
5060.00	21.830	124.980	4875.04	-764.05	-626.28	774.20	40°11'37.157"N	104°56'26.466"W	0.44	
5145.00	21.810	126.490	4953.95	-789.40	-644.73	799.84	40°11'36.975"N	104°56'26.135"W	0.66	
5230.00	20.120	126.390	5033.32	-813.57	-662.80	824.31	40°11'36.796"N	104°56'25.820"W	1.99	
5316.00	18.540	126.090	5114.47	-836.25	-679.63	847.26	40°11'36.630"N	104°56'25.524"W	1.84	
5401.00	19.050	126.060	5194.94	-858.13	-695.75	869.40	40°11'36.470"N	104°56'25.233"W	0.60	
5486.00	18.770	123.660	5275.35	-880.47	-711.50	891.99	40°11'36.315"N	104°56'24.948"W	0.97	
5575.00	17.200	122.380	5360.00	-903.26	-726.48	915.03	40°11'36.167"N	104°56'24.651"W	1.82	
5661.00	14.610	123.360	5442.70	-922.85	-739.26	934.83	40°11'36.040"N	104°56'24.396"W	3.03	
5746.00	12.550	127.590	5525.32	-938.94	-750.79	951.10	40°11'35.927"N	104°56'24.186"W	2.69	
5833.00	10.360	126.800	5610.59	-952.52	-761.24	964.86	40°11'35.823"N	104°56'24.009"W	2.52	
5921.00	8.200	125.530	5697.43	-963.83	-769.63	976.30	40°11'35.740"N	104°56'23.861"W	2.47	
6006.00	6.120	129.350	5781.76	-972.16	-776.03	984.74	40°11'35.677"N	104°56'23.753"W	2.51	
6091.00	4.220	138.240	5866.41	-977.67	-781.23	990.33	40°11'35.626"N	104°56'23.681"W	2.42	
6176.00	2.370	134.740	5951.27	-980.94	-784.80	993.66	40°11'35.590"N	104°56'23.638"W	2.19	
6261.00	1.980	124.070	6036.21	-983.37	-786.86	996.12	40°11'35.570"N	104°56'23.606"W	0.66	
6346.00	0.160	26.390	6121.19	-984.63	-787.58	997.39	40°11'35.563"N	104°56'23.590"W	2.36	
6501.00	1.590	5.240	6276.17	-984.96	-785.24	997.68	40°11'35.586"N	104°56'23.586"W	0.93	
6521.00	1.780	4.560	6296.16	-985.02	-784.66	997.73	40°11'35.592"N	104°56'23.585"W	0.96	
6564.00	2.100	340.850	6339.14	-984.84	-783.25	997.53	40°11'35.606"N	104°56'23.588"W	1.99	
6606.00	4.660	304.640	6381.06	-983.21	-781.55	995.87	40°11'35.623"N	104°56'23.609"W	7.65	
6649.00	8.820	299.410	6423.76	-978.94	-778.94	991.56	40°11'35.648"N	104°56'23.665"W	9.77	
6692.00	13.580	299.300	6465.93	-971.73	-774.85	984.28	40°11'35.689"N	104°56'23.759"W	11.07	
6734.00	19.050	295.450	6506.22	-961.32	-769.48	973.79	40°11'35.742"N	104°56'23.894"W	13.27	
6777.00	24.390	288.120	6546.16	-946.62	-763.70	959.00	40°11'35.799"N	104°56'24.084"W	13.91	
6820.00	29.550	276.470	6584.50	-927.69	-759.74	940.00	40°11'35.838"N	104°56'24.329"W	17.13	
6862.00	33.530	268.210	6620.30	-905.80	-758.94	918.09	40°11'35.846"N	104°56'24.611"W	13.97	
6905.00	36.390	265.910	6655.54	-881.19	-760.22	893.49	40°11'35.833"N	104°56'24.928"W	7.32	
6948.00	37.500	265.830	6689.91	-855.38	-762.08	867.72	40°11'35.815"N	104°56'25.261"W	2.58	
6990.00	39.610	265.030	6722.75	-829.26	-764.17	841.62	40°11'35.794"N	104°56'25.597"W	5.16	
7033.00	41.860	264.020	6755.33	-801.29	-766.85	813.70	40°11'35.768"N	104°56'25.957"W	5.45	
7075.00	42.000	263.930	6786.58	-773.34	-769.80	785.78	40°11'35.739"N	104°56'26.316"W	0.36	
7118.00	42.520	263.830	6818.40	-744.54	-772.88	757.03	40°11'35.708"N	104°56'26.687"W	1.22	
7163.00	46.050	265.540	6850.61	-713.22	-775.77	725.75	40°11'35.680"N	104°56'27.090"W	8.28	
7208.00	52.370	266.310	6880.00	-679.22	-778.18	691.79	40°11'35.656"N	104°56'27.528"W	14.10	

REFERENCE WELLPATH IDENTIFICATION			
Operator	KERR-MCGEE OIL & GAS ONSHORE LP	Slot	SLOT#35 BAREFOOT 33N-25HZ (1959'FSL & 470'FEL, SEC.25)
Area	COLORADO	Well	BAREFOOT 33N-25HZ
Field	WELD COUNTY (KERR MCGEE)	Wellbore	BAREFOOT 33N-25HZ AWB
Facility	SEC.25-T3N-R68W		

WELLPATH DATA (156 stations) † = interpolated/extrapolated station

MD [ft]	Inclination [°]	Azimuth [°]	TVD [ft]	Vert Sect [ft]	North [ft]	East [ft]	Latitude	Longitude	DLS [°/100ft]	Comments
7251.00	57.110	268.770	6904.82	-644.13	-779.67	656.72	40°11'35.641"N	104°56'27.979"W	11.97	
7295.00	58.360	269.140	6928.30	-606.93	-780.35	619.52	40°11'35.635"N	104°56'28.459"W	2.93	
7339.00	62.370	266.730	6950.06	-568.70	-781.74	581.32	40°11'35.621"N	104°56'28.951"W	10.28	
7382.00	67.790	263.760	6968.17	-529.81	-784.99	542.48	40°11'35.589"N	104°56'29.452"W	14.07	
7425.00	75.290	263.180	6981.78	-489.25	-789.63	501.98	40°11'35.543"N	104°56'29.973"W	17.49	
7467.00	77.370	262.040	6991.70	-448.71	-794.88	461.51	40°11'35.491"N	104°56'30.495"W	5.61	
7510.00	78.060	261.380	7000.85	-407.04	-800.94	419.94	40°11'35.431"N	104°56'31.031"W	2.20	
7572.00	84.850	263.720	7010.06	-346.16	-808.87	359.18	40°11'35.353"N	104°56'31.814"W	11.57	
7626.00†	87.543	264.247	7013.64	-292.50	-814.52	305.60	40°11'35.297"N	104°56'32.504"W	5.08	7" Casing Point
7651.00	88.790	264.490	7014.44	-267.60	-816.97	280.74	40°11'35.273"N	104°56'32.824"W	5.08	
7736.00	88.550	266.880	7016.42	-182.78	-823.37	196.01	40°11'35.210"N	104°56'33.916"W	2.83	
7823.00	89.260	268.650	7018.08	-95.82	-826.76	109.09	40°11'35.176"N	104°56'35.036"W	2.19	
7908.00	90.550	270.400	7018.22	-10.83	-827.46	24.10	40°11'35.169"N	104°56'36.131"W	2.56	
7994.00	90.770	270.710	7017.23	75.14	-826.63	-61.89	40°11'35.177"N	104°56'37.240"W	0.44	
8079.00	91.200	270.880	7015.77	160.09	-825.45	-146.87	40°11'35.189"N	104°56'38.335"W	0.54	
8164.00	91.410	269.850	7013.83	245.04	-824.91	-231.84	40°11'35.194"N	104°56'39.430"W	1.24	
8249.00	90.800	270.200	7012.19	330.02	-824.87	-316.83	40°11'35.195"N	104°56'40.525"W	0.83	
8335.00	90.800	269.330	7010.99	416.00	-825.22	-402.82	40°11'35.191"N	104°56'41.633"W	1.01	
8420.00	90.270	269.370	7010.20	501.00	-826.19	-487.81	40°11'35.182"N	104°56'42.728"W	0.63	
8505.00	90.000	268.760	7010.00	585.99	-827.58	-572.80	40°11'35.168"N	104°56'43.823"W	0.78	
8590.00	89.840	269.790	7010.12	670.99	-828.65	-657.79	40°11'35.157"N	104°56'44.918"W	1.23	
8675.00	90.520	270.070	7009.85	755.98	-828.75	-742.79	40°11'35.156"N	104°56'46.014"W	0.87	
8761.00	90.980	270.350	7008.72	841.96	-828.44	-828.78	40°11'35.159"N	104°56'47.122"W	0.63	
8846.00	90.610	269.450	7007.55	926.94	-828.59	-913.77	40°11'35.158"N	104°56'48.217"W	1.14	
8931.00	89.960	268.590	7007.12	1011.94	-830.04	-998.75	40°11'35.143"N	104°56'49.312"W	1.27	
9016.00	89.720	267.890	7007.36	1096.93	-832.65	-1083.71	40°11'35.118"N	104°56'50.407"W	0.87	
9102.00	90.210	268.290	7007.41	1182.91	-835.52	-1169.66	40°11'35.089"N	104°56'51.514"W	0.74	
9187.00	90.060	268.100	7007.21	1267.90	-838.20	-1254.62	40°11'35.063"N	104°56'52.609"W	0.28	
9357.00	90.030	268.010	7007.08	1437.88	-843.97	-1424.52	40°11'35.006"N	104°56'54.798"W	0.06	
9442.00	90.210	269.150	7006.90	1522.87	-846.07	-1509.50	40°11'34.985"N	104°56'55.893"W	1.36	
9528.00	90.640	269.920	7006.26	1608.87	-846.77	-1595.49	40°11'34.978"N	104°56'57.001"W	1.03	
9613.00	90.980	269.530	7005.06	1693.85	-847.18	-1680.48	40°11'34.974"N	104°56'58.097"W	0.61	
9698.00	90.740	269.670	7003.79	1778.84	-847.77	-1765.47	40°11'34.968"N	104°56'59.192"W	0.33	
9783.00	89.780	269.430	7003.40	1863.83	-848.44	-1850.46	40°11'34.961"N	104°57'00.287"W	1.16	
9868.00	89.630	268.200	7003.84	1948.83	-850.20	-1935.44	40°11'34.944"N	104°57'01.382"W	1.46	
9954.00	88.610	268.450	7005.16	2034.81	-852.71	-2021.40	40°11'34.919"N	104°57'02.490"W	1.22	
10039.00	89.170	269.250	7006.80	2119.79	-854.42	-2106.36	40°11'34.902"N	104°57'03.585"W	1.15	
10124.00	89.630	269.540	7007.69	2204.79	-855.31	-2191.35	40°11'34.893"N	104°57'04.680"W	0.64	
10209.00	89.660	269.010	7008.22	2289.79	-856.39	-2276.34	40°11'34.882"N	104°57'05.775"W	0.62	
10294.00	89.190	270.130	7009.07	2374.78	-857.03	-2361.33	40°11'34.876"N	104°57'06.870"W	1.43	
10380.00	89.500	269.650	7010.06	2460.76	-857.19	-2447.33	40°11'34.874"N	104°57'07.978"W	0.66	
10465.00	90.550	270.990	7010.02	2545.74	-856.72	-2532.32	40°11'34.879"N	104°57'09.074"W	2.00	
10550.00	90.860	270.910	7008.97	2630.69	-855.31	-2617.31	40°11'34.892"N	104°57'10.169"W	0.38	
10635.00	90.980	270.320	7007.61	2715.65	-854.40	-2702.29	40°11'34.901"N	104°57'11.264"W	0.71	
10723.00	90.150	270.360	7006.74	2803.62	-853.87	-2790.28	40°11'34.906"N	104°57'12.398"W	0.94	

Actual Wellpath Report

BAREFOOT 33N-25HZ PWP

Page 5 of 7

REFERENCE WELLPATH IDENTIFICATION			
Operator	KERR-MCGEE OIL & GAS ONSHORE LP	Slot	SLOT#35 BAREFOOT 33N-25HZ (1959'FSL & 470'FEL, SEC.25)
Area	COLORADO	Well	BAREFOOT 33N-25HZ
Field	WELD COUNTY (KERR MCGEE)	Wellbore	BAREFOOT 33N-25HZ AWB
Facility	SEC.25-T3N-R68W		

WELLPATH DATA (156 stations)

MD [ft]	Inclination [°]	Azimuth [°]	TVD [ft]	Vert Sect [ft]	North [ft]	East [ft]	Latitude	Longitude	DLS [°/100ft]	Comments
10808.00	89.010	269.490	7007.37	2888.61	-853.98	-2875.28	40°11'34.905"N	104°57'13.493"W	1.69	
10893.00	89.440	269.670	7008.52	2973.59	-854.61	-2960.27	40°11'34.899"N	104°57'14.588"W	0.55	
10978.00	89.290	269.420	7009.46	3058.59	-855.28	-3045.26	40°11'34.892"N	104°57'15.683"W	0.34	
11063.00	89.070	269.660	7010.67	3143.57	-855.96	-3130.25	40°11'34.885"N	104°57'16.778"W	0.38	
11151.00	89.630	269.020	7011.67	3231.57	-856.98	-3218.24	40°11'34.875"N	104°57'17.912"W	0.97	
11236.00	89.350	268.770	7012.43	3316.56	-858.62	-3303.22	40°11'34.859"N	104°57'19.007"W	0.44	
11321.00	89.440	267.700	7013.33	3401.55	-861.24	-3388.17	40°11'34.833"N	104°57'20.102"W	1.26	
11406.00	89.500	265.430	7014.11	3486.46	-866.33	-3473.01	40°11'34.783"N	104°57'21.195"W	2.67	
11492.00	90.240	267.100	7014.31	3572.35	-871.93	-3558.82	40°11'34.727"N	104°57'22.301"W	2.12	
11577.00	90.860	267.890	7013.49	3657.31	-875.64	-3643.74	40°11'34.690"N	104°57'23.395"W	1.18	
11664.00	90.670	269.330	7012.33	3744.30	-877.75	-3730.70	40°11'34.669"N	104°57'24.516"W	1.67	
11754.00	91.010	269.260	7011.01	3834.29	-878.86	-3820.68	40°11'34.658"N	104°57'25.675"W	0.39	
11839.00	90.090	269.150	7010.19	3919.28	-880.04	-3905.67	40°11'34.646"N	104°57'26.770"W	1.09	
11924.00	90.670	269.440	7009.63	4004.28	-881.09	-3990.66	40°11'34.636"N	104°57'27.866"W	0.76	
12009.00	90.610	269.080	7008.68	4089.27	-882.18	-4075.65	40°11'34.625"N	104°57'28.961"W	0.43	
12094.00	90.920	268.990	7007.55	4174.27	-883.62	-4160.63	40°11'34.611"N	104°57'30.056"W	0.38	
12180.00	89.900	268.040	7006.93	4260.26	-885.84	-4246.60	40°11'34.588"N	104°57'31.164"W	1.62	
12265.00	90.520	267.910	7006.62	4345.24	-888.85	-4331.54	40°11'34.559"N	104°57'32.258"W	0.75	
12350.00	90.060	268.780	7006.19	4430.23	-891.30	-4416.50	40°11'34.534"N	104°57'33.353"W	1.16	
12514.00	90.030	268.090	7006.06	4594.22	-895.78	-4580.44	40°11'34.490"N	104°57'35.465"W	0.42	Last BHI MWD+IFR Surveys
12582.00	90.030	268.090	7006.02	4662.21	-898.05	-4648.40	40°11'34.467"N	104°57'36.341"W	0.00	Projection to Bit

HOLE & CASING SECTIONS - Ref Wellbore: BAREFOOT 33N-25HZ AWB Ref Wellpath: BAREFOOT 33N-25HZ PWP

String/Diameter	Start MD [ft]	End MD [ft]	Interval [ft]	Start TVD [ft]	End TVD [ft]	Start N/S [ft]	Start E/W [ft]	End N/S [ft]	End E/W [ft]
13.5in Open Hole	17.00	1745.00	1728.00	17.00	1744.89	0.00	0.00	-11.15	-10.01
9.625in Casing Surface	17.00	1734.00	1717.00	17.00	1733.90	0.00	0.00	-11.07	-9.90
8.75in Open Hole	1745.00	7636.00	5891.00	1744.89	7014.03	-11.15	-10.01	-815.51	295.66
7in Casing Intermediate	17.00	7626.00	7609.00	17.00	7013.64	0.00	0.00	-814.52	305.60
6.125in Open Hole	7636.00	12582.00	4946.00	7014.03	7006.02	-815.51	295.66	-898.05	-4648.40

Actual Wellpath Report

BAREFOOT 33N-25HZ PWP

Page 6 of 7

REFERENCE WELLPATH IDENTIFICATION			
Operator	KERR-MCGEE OIL & GAS ONSHORE LP	Slot	SLOT#35 BAREFOOT 33N-25HZ (1959'FSL & 470'FEL, SEC.25)
Area	COLORADO	Well	BAREFOOT 33N-25HZ
Field	WELD COUNTY (KERR MCGEE)	Wellbore	BAREFOOT 33N-25HZ AWB
Facility	SEC.25-T3N-R68W		

TARGETS									
Name	MD [ft]	TVD [ft]	North [ft]	East [ft]	Grid East [US ft]	Grid North [US ft]	Latitude	Longitude	Shape
SEC.25-T3N-R68W SECTION LINES		-16.00	1277.68	-193.29	3155268.77	1315781.51	40°11'55.972"N	104°56'38.933"W	polygon
BAREFOOT 33N-25HZ BHL (1145'FSL & 150'FWL, SEC.25) REV-2		7018.00	-887.05	-4649.29	3150826.64	1313588.96	40°11'34.576"N	104°57'36.353"W	point
BAREFOOT 33N-25HZ BHL ON PLAT (1285'FSL & 50'FWL, SEC.25) REV-1		7018.00	-747.05	-4749.29	3150725.77	1313728.33	40°11'35.959"N	104°57'37.642"W	point
BAREFOOT 33N-25HZ LAND BOX		7018.00	0.00	0.00	3155470.07	1314505.13	40°11'43.346"N	104°56'36.442"W	polygon

WELLPATH COMPOSITION - Ref Wellbore: BAREFOOT 33N-25HZ AWB					Ref Wellpath: BAREFOOT 33N-25HZ PWP				
Start MD [ft]	End MD [ft]	Positional Uncertainty Model	Log Name/Comment			Wellbore			
17.00	1656.00	Generic gyro - continuous (Standard)	MS ENERGY GYRO SURVEYS <117-1656>			BAREFOOT 33N-25HZ AWB			
1656.00	7572.00	NaviTrak (IFR)	BHI MWD+IFR SURVEYS 8 3/4" HOLE <1786-7572>			BAREFOOT 33N-25HZ AWB			
7572.00	12514.00	NaviTrak (IFR)	BHI MWD+IFR SURVEYS 6 1/8" HOLE <7651-12514>			BAREFOOT 33N-25HZ AWB			
12514.00	12582.00	Blind Drilling (std)	Projection to bit			BAREFOOT 33N-25HZ AWB			

Actual Wellpath Report

BAREFOOT 33N-25HZ PWP

Page 7 of 7

REFERENCE WELLPATH IDENTIFICATION			
Operator	KERR-MCGEE OIL & GAS ONSHORE LP	Slot	SLOT#35 BAREFOOT 33N-25HZ (1959'FSL & 470'FEL, SEC.25)
Area	COLORADO	Well	BAREFOOT 33N-25HZ
Field	WELD COUNTY (KERR MCGEE)	Wellbore	BAREFOOT 33N-25HZ AWB
Facility	SEC.25-T3N-R68W		

WELLPATH COMMENTS				
MD [ft]	Inclination [°]	Azimuth [°]	TVD [ft]	Comment
17.00	0.000	112.940	17.00	Tie-On
117.00	0.260	112.940	117.00	Begin GYRO Surveys
1656.00	0.690	206.690	1655.90	Tie-Into GYRO Surveys
1786.00	0.820	245.300	1785.89	Begin BHI MWD+IFR Surveys
7626.00	87.543	264.247	7013.64	7" Casing Point
12514.00	90.030	268.090	7006.06	Last BHI MWD+IFR Surveys
12582.00	90.030	268.090	7006.02	Projection to Bit