



Scale: 5" / 100'
Measured Depth Log

Well Name BAREFOOT 33N-25HZ

Location NESE 25 3N 68W 6 PM

State COLORADO

Country USA

API Number 05-123-3923000

Region DJ BASIN

Spud Date 6/8/2014

Surface Coordinates 1959' FSL 470' FEL

Bottom Hole Coordinates 1285' FSL 50' FWL

County WELD

Rig Number XTREME 8

AFE # 2092723

Field WATTENBERG

Drilling Completed 7/31/2014

Ground Elevation 4871'

K.B. Elevation 4888'

Logged Interval 6900' To 12582'

Total Depth 12582'

Formation NIOBRARA

Type of Drilling Fluid FW LSND

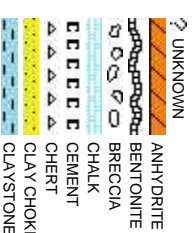
Company Anadarko

Address 1099 18TH, SU
DENVER, CO 8

Name RIKKI WITHER

Company COLUMBINE L

Address 2385 S. LIPAN
DENVER, CO 8



Operator

ITE 1800
0202

Geologist

SPOON, CONOR PESICKA
OGGING INC

ST
0223

Rock Types

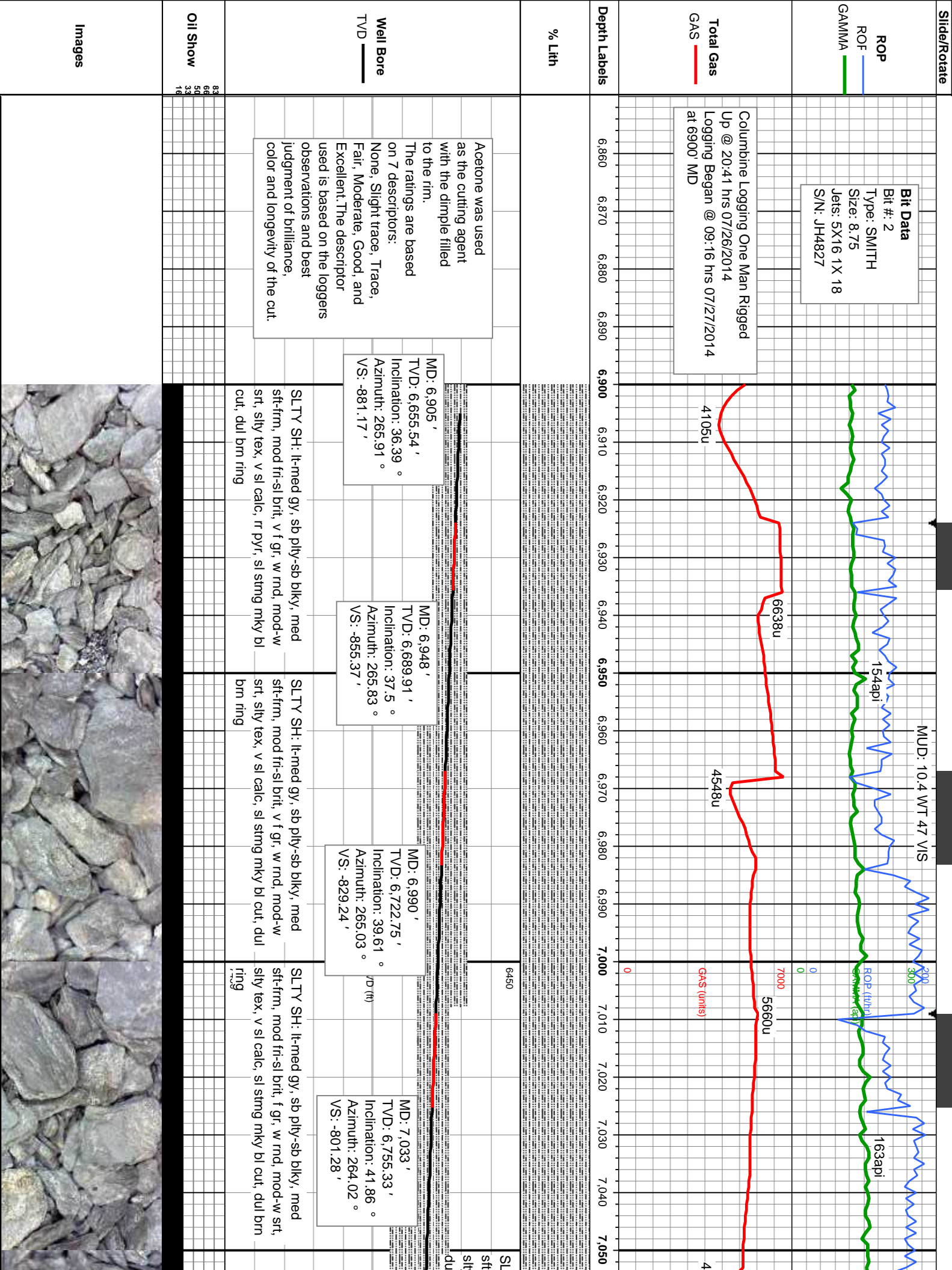
CONGLOMERATE	TT	TT	TT	MARLSTONE
DOLomite	X X X X X	X X X X X	X X X X X	METAMORPHIC NO SAMPLE
DOLomitic LIMESTONE	XXXXXX	XXXXXX	XXXXXX	SALT
GRANITE	XXXXXX	XXXXXX	XXXXXX	SANDSTONE
GYPsum	XXXXXX	XXXXXX	XXXXXX	SALT-PEPPER SAND
IGNEOUS	XXXXXX	XXXXXX	XXXXXX	SHALE
SIDERite or LIMONITE	XXXXXX	XXXXXX	XXXXXX	SHALE COLORED
LIMESTONE	XXXXXX	XXXXXX	XXXXXX	SHALE GRAY
SHALY SANDSTONE	XXXXXX	XXXXXX	XXXXXX	SHALY SANDSTONE
SHALY SILTSTONE	XXXXXX	XXXXXX	XXXXXX	SHALY SILTSTONE
SILTSTONE	XXXXXX	XXXXXX	XXXXXX	SILTSTONE
TUFF	XXXXXX	XXXXXX	XXXXXX	TUFF
WELDED TUFF	XXXXXX	XXXXXX	XXXXXX	WELDED TUFF

Accessories

Fossils	GASTROPOD	ARGILLITE GRAIN	HEAVY MINERAL	Stringer
INOCERAMUS	B BENTONITE	K KAOLIN	ANHYDRITE STRINGER	BENTONITE STRINGER
ALGAE	O OOLITE	BITUMINOUS SUBSTANCE	M MARCASITE	COAL STRINGER
AMPHIPORA	O OSTRACOD	BRECCIA FRAGMENTS	M MARLSTONE	DOLOMITE STRINGER
BELEMNITE	P PELECYPOD	CARBONACEOUS FLAKES	MINERAL CRYSTALS	GYPSUM STRINGER
BIOCLASTIC	P PELLET	CHRTK	N NODULES	LIMESTONE STRINGER
BRACHIOPOD	P PISOLITE	CHRTK	PHOSPHATE PELLETS	MARLSTONE (CALC) STRG
BRYOZOA	PLANT REMAINS	THIN BEDS	P PYRITE	MARLSTONE (DOL) STRG
CEPHALOPOD	PLANT SPORES	DOLOMITIC	S SALT CAST	SANDSTONE (DOL) STRG
CORAL	SCAPHOPOD	F FELDSPAR	S SANDY	SHALE STRINGER
CRINOID	STROMATOPOROID	FERRUGINOUS PELLETT	S SIDERITE	SILTSTONE STRINGER
ECHINOID				
Minerals	FISH	FERRUGINOUS	SILICEOUS	
FORAMINIFERA	ANHYDRITIC	GLAUCONITE	SILTY	
F FOSSIL	ARGILLACEOUS	GYPSIFEROUS	TUFFACEOUS	

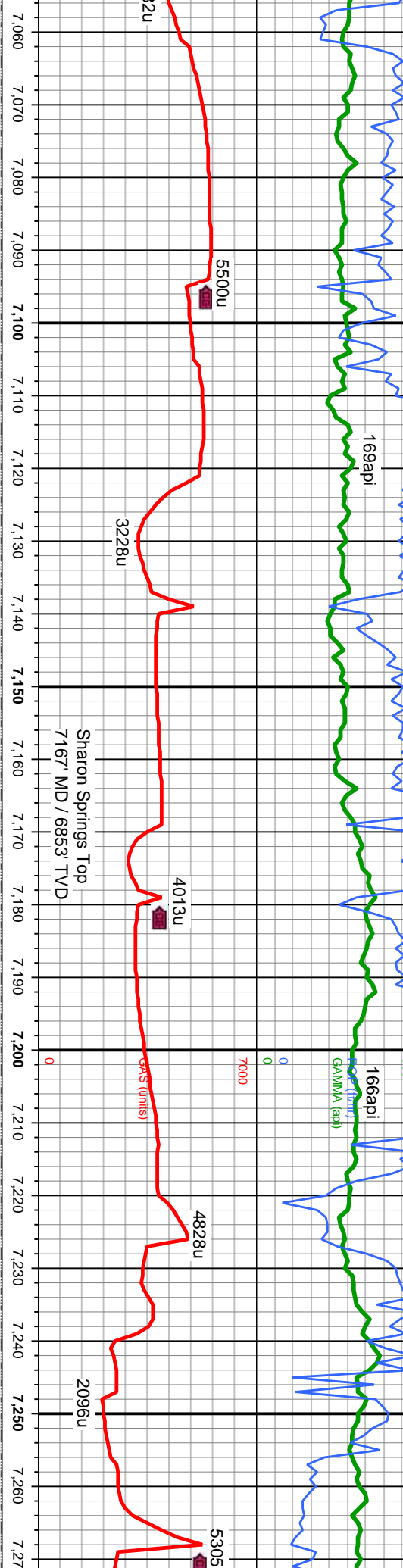
Other Symbols

Oil Show	P PINPOINT	WIRELINE TESTED - LEFT	E EARTHY
V VUGGY	FAULT	WIRELINE TESTED - RT	F FINELY XLN
Engineering	FORMATION TOP	DRILL STEM TEST	G GRAINSTONE
D DEAD	GAS SHOW	MN DEPTH	L LITHOGRAPHIC
EVEN	OIL SHOW	MN DEPTH	Mx MICROXLN
QUESTIONABLE	BIT		
SPOTTED STAINING	CONNECTION (UP)	Rounding	M MUDSTONE
		A ANGULAR	P PACKSTONE
Porosity	CONNECTION (DOWN)	SUBANG	W WACKESTONE
	CONNECTION GAS	R ROUNDED	
E EARTHY	CONNECTION GAS (LEFT)	SUBANG	
F FENESTRAL	TRIP GAS	REVERSE FAULT	
F FRACTURE	TRIP GAS (LEFT)	CASING	
INTERCRYSTALLINE	DOWN TIME GAS	SIDEWALL CORE (LEFT)	Textures
INTERCRYSTALLINE	DOWN TIME GAS (LEFT)	SIDEWALL CORE (RIGHT)	P POOR
MOLDIC	CORE - LOST	SLIDE	W WELL
ORGANIC	CORE - RECOVERED	SURVEY	C CHALKY
		CRYPTOXLN	



MUD: 10.4 WT 46 VIS

MUD: 10.4 WT 47 VIS



SLTY SH: lt-med gy, sb ply-sb blkly, med sft-firm, mod fri-sl brit, f gr, w rnd, mod-w srt, silty tex, v sl calc, rr pyr, sl string mky bl cut, dul brn ring

SLTY SH: lt-med gy, sb ply-sb blkly, med sft-firm, mod fri-sl brit, f gr, w rnd, mod-w srt, silty tex, v sl calc, rr bent, sl string mky bl cut, dul brn ring

SLTY SH: lt-med gy, sb ply-sb blkly, med sft-firm, mod fri-sl brit, f gr, w rnd, mod-w srt, silty tex, v sl calc, com bent, sl string mky bl cut, dul brn ring

SLTY SH: med gy, sb ply-sb blkly, med sft-firm, mod fri-sl brit, f gr, w rnd, mod-w srt, silty tex, v sl calc, tr bent, sl string mky bl cut, dul bl ring

SLTY SH: med gy, sb ply-sb blkly, med sft-firm, mod fri-sl brit, f gr, w rnd, mod-w srt, silty tex, CHK: lt-med srt, wxy lsir, mot; MRR med sft-firm, brit, gt, v sl string mky bl cut, bn

MD: 7,076 '
TVD: 6,786.58 '
Inclination: 42 °
Azimuth: 263.93 °
VS: -773.32 '

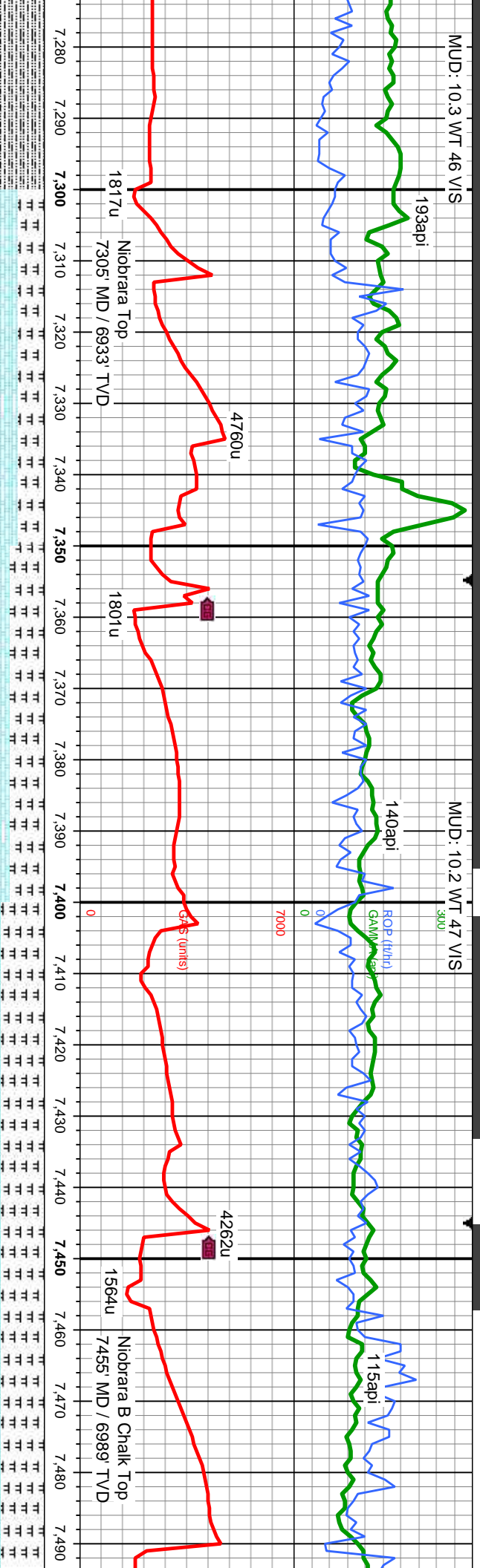
MD: 7,118 '
TVD: 6,818.4 '
Inclination: 42.52 °
Azimuth: 263.83 °
VS: -744.52 '

MD: 7,163 '
TVD: 6,850.61 '
Inclination: 46.05 °
Azimuth: 265.54 °
VS: -713.2 '

MD: 7,208 '
TVD: 6,879.99 '
Inclination: 52.37 °
Azimuth: 266.31 °
VS: -679.2 '

MD: 7,251 '
TVD: 6,904.81 '
Inclination: 57.11 °
Azimuth: 268.77 °
VS: -644.12 '





ply-sb blkly, med	ply-sb blkly, med	ply-sb blkly, med	ply-sb blkly, med
f gr, w rnd, mod-w srt, blkly, blkly, sft, f gr, mod	f gr, w rnd, mod-w srt, blkly, blkly, sft, f gr, mod	f gr, w rnd, mod-w srt, blkly, blkly, sft, f gr, mod	f gr, w rnd, mod-w srt, blkly, blkly, sft, f gr, mod
CHK: lt-med gy, blkly, sft, f gr, mod srt, wxy-rthy lstr, mot; MRLST: dk-med gy, sb ply, med sft-frm, brit, gt, v f gr, w srt, sfty tex, lam, tr bent, sl stmg mky bl cut, bri bl ring	CHK: lt-med gy, blkly, sft, f gr, mod srt, wxy-rthy lstr, mot; MRLST: dk-med gy, sb ply, med sft-frm, brit, gt, v f gr, w srt, sfty tex, lam, sl stmg mky bl cut, bri bl ring	CHK: lt-med gy, blkly, sft, f gr, mod srt, wxy-rthy lstr, mot; MRLST: dk-med gy, sb ply, med sft-frm, brit, gt, v f gr, w srt, sfty tex, lam, sl stmg mky bl cut, bri bl ring	CHK: lt-med gy, blkly, sft, f gr, mod srt, wxy-rthy lstr, mot; MRLST: dk-med gy, sb ply, med sft-frm, brit, gt, v f gr, w srt, sfty tex, lam, sl stmg mky bl cut, bri bl ring
f gr, w srt, sfty tex, lam, bl ring	f gr, w srt, sfty tex, lam, bl ring	f gr, w srt, sfty tex, lam, bl ring	f gr, w srt, sfty tex, lam, bl ring

MD: 7.295 '
 TVD: 6,928.3 '
 Inclination: 58.36 °
 Azimuth: 269.14 °
 VS: -606.91 '

MD: 7,339 '
TVD: 6,950.06 '
Inclination: 62.37 °
Azimuth: 266.73 °
VS: -568.69 '

MD: 7,382 '
TVD: 6,968.17 '
Inclination: 67.79 °
Azimuth: 263.76 °
VS: -529.8 '

MD: 7,425 '
TV D: 6,981.78 '
Inclination: 75.29 °
Azimuth: 263.18 °
S: -489.24 '

ID: 7,467 '
 V.D: 6,991.7 '
 inclination: 77.37 °
 zimuth: 262.04 °
 S: 148.60 '

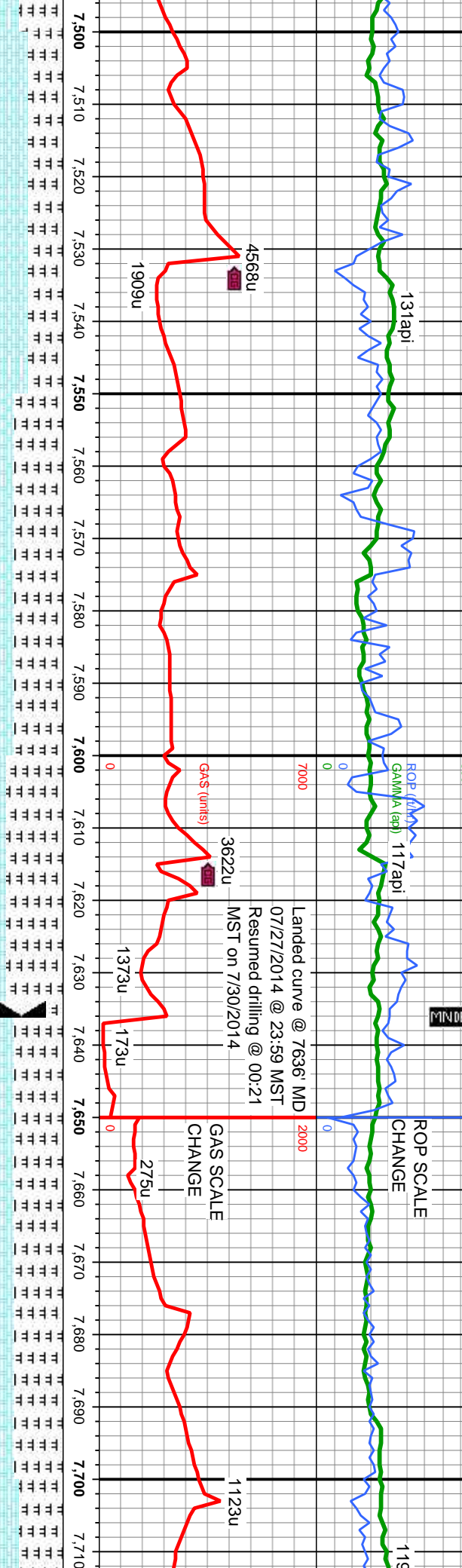


MUD: 10.4 WT 45 VIS

MUD: 10.4 WT 46 VIS

7/28-30/2014

MUD: 9.7 WT 42 VIS



CHK: lt-med gy, blk, sft, f gr, mod srt, wxy-rthy lstr, mot, MRLST: dk-med gy, sb ply, med sft-fm, brit, gt, vf gr, w srt, silty tex, lam, tr inoc, sl string mky bl cut, bri bl ring

MRLST: dk-med gy, sb ply, med sft-fm, brit, gt, vf gr, w srt, silty tex, lam; CHK: lt-med gy, blk, sft, f gr, mod srt, wxy-rthy lstr, mot, com inoc, sl string mky bl cut, bri bl ring

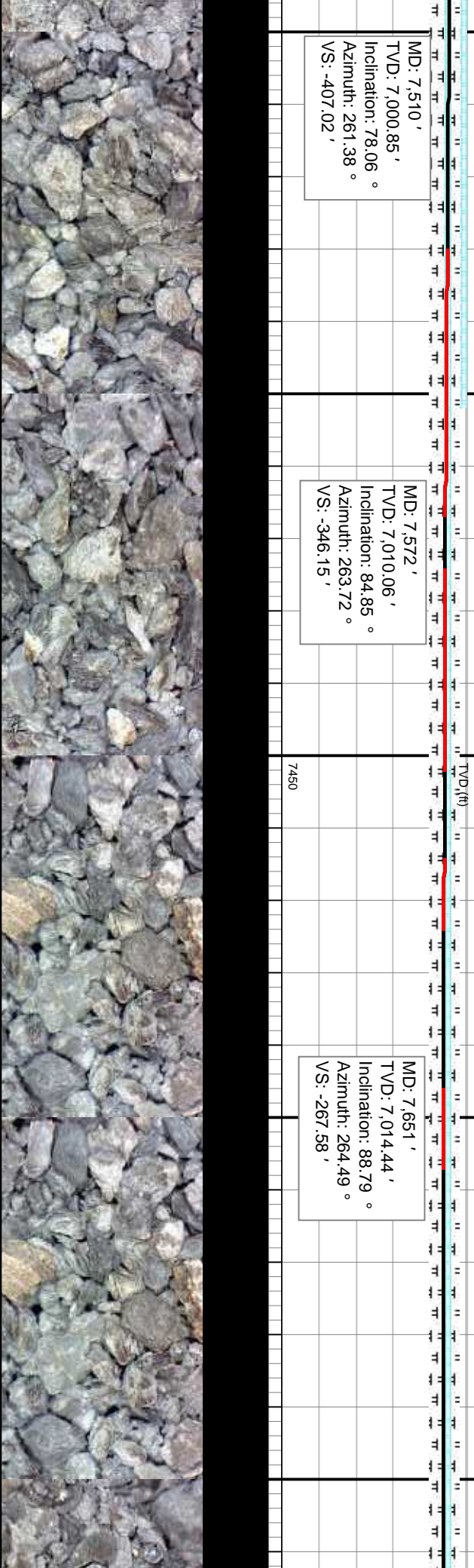
MRLST: dk-med gy, sb ply, med sft-fm, brit, gt, vf gr, w srt, silty tex, lam; CHK: lt-med gy, blk, sft, f gr, mod srt, wxy-rthy lstr, mot, com inoc, sl string mky bl cut, bri bl ring

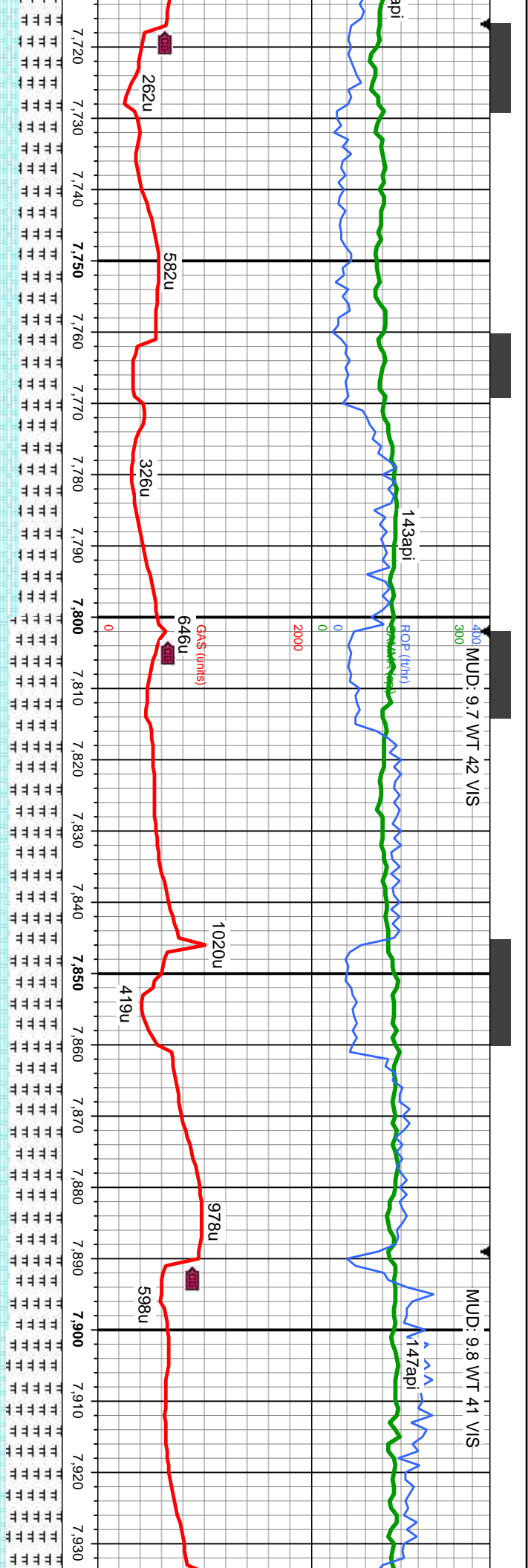
MRLST: dk-med gy, sb ply, med sft-fm, brit, gt, vf gr, w srt, silty tex, lam; CHK: lt-med gy, blk, sft, f gr, mod srt, wxy-rthy lstr, mot, tr inoc, sl string mky bl cut, bri bl ring

MD: 7,510 '
TVD: 7,000.85 '
Inclination: 78.06 °
Azimuth: 261.38 °
VS: -407.02 '

MD: 7,572 '
TVD: 7,010.06 '
Inclination: 84.85 °
Azimuth: 263.72 °
VS: -346.15 '

MD: 7,651 '
TVD: 7,014.44 '
Inclination: 88.79 °
Azimuth: 264.49 °
VS: -267.58 '





MRLST: dk-med gy, sb pily, med sft-fm, brit, gt, vf gr, w srt, silty tex, lam; CHK: lt-med gy, blkly, sft, f gr, mod srt, wxy-rthy lstr, mot, com inoc, sl stmg mky bl cut, bri bl ring

6450

MRLST: dk-med gy, sb pily, med sft-fm, brit, gt, vf gr, w srt, silty tex, lam; CHK: lt-med gy, blkly, sft, f gr, mod srt, wxy-rthy lstr, mot, com inoc, tr bent, sl stmg mky bl cut, bri bl ring

MRLST: dk-med gy, sb pily, med sft-fm, brit, gt, vf gr, w srt, silty tex, lam; CHK: lt-med gy, blkly, sft, f gr, mod srt, wxy-rthy lstr, mot, com inoc, tr bent, sl stmg mky bl cut, bri bl ring

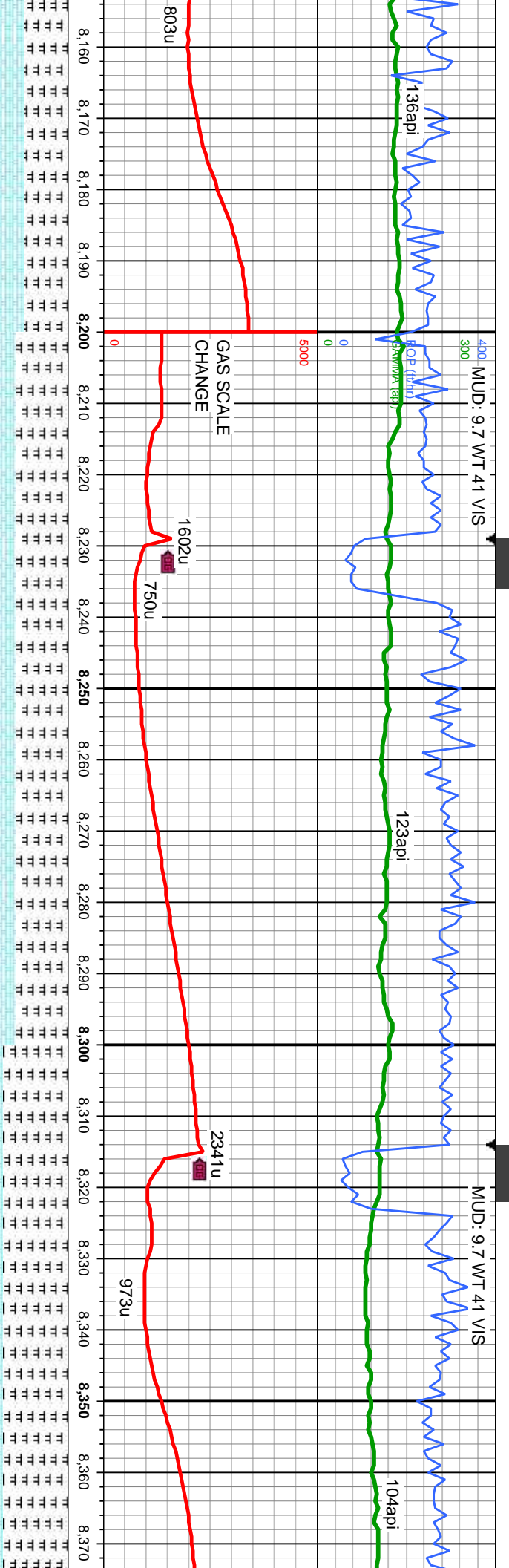
MD: 7,736 '
TVD: 7,016.42 '
Inclination: 88.55 °
Azimuth: 266.88 °
VS: -182.76 '

MD: 7,823 '
TVD: 7,018.08 '
Inclination: 89.26 °
Azimuth: 268.65 °
VS: -95.8 '

MD: 7,908 '
TVD: 7,018.22 '
Inclination: 90.55 °
Azimuth: 270.4 °
VS: -10.81 '

7450





MUD: 9.7 WT 41 VIS

MUD: 9.7 WT 41 VIS

sd sft-firm, brit, gt, vf gr, w
y, blkly, sft, f gr, mod srt,
g mky bl cut, bri bl ring

MRLST: dk-med gy, sb pty, med sft-firm, brit, gt, vf gr, w srt,
silty tex, lam; CHK: lt-med gy, blkly, sft, f gr, mod srt, wxy-rthy
lsrt, mot, com inoc, sl stmg mky bl cut, bri bl ring

MRLST: dk-med gy, sb pty, med sft-firm, brit, gt, vf gr,
silty tex, lam; CHK: lt-med gy, blkly, sft, f gr, mod srt, w
lsrt, mot, com inoc, sl stmg mky bl cut, bri bl ring

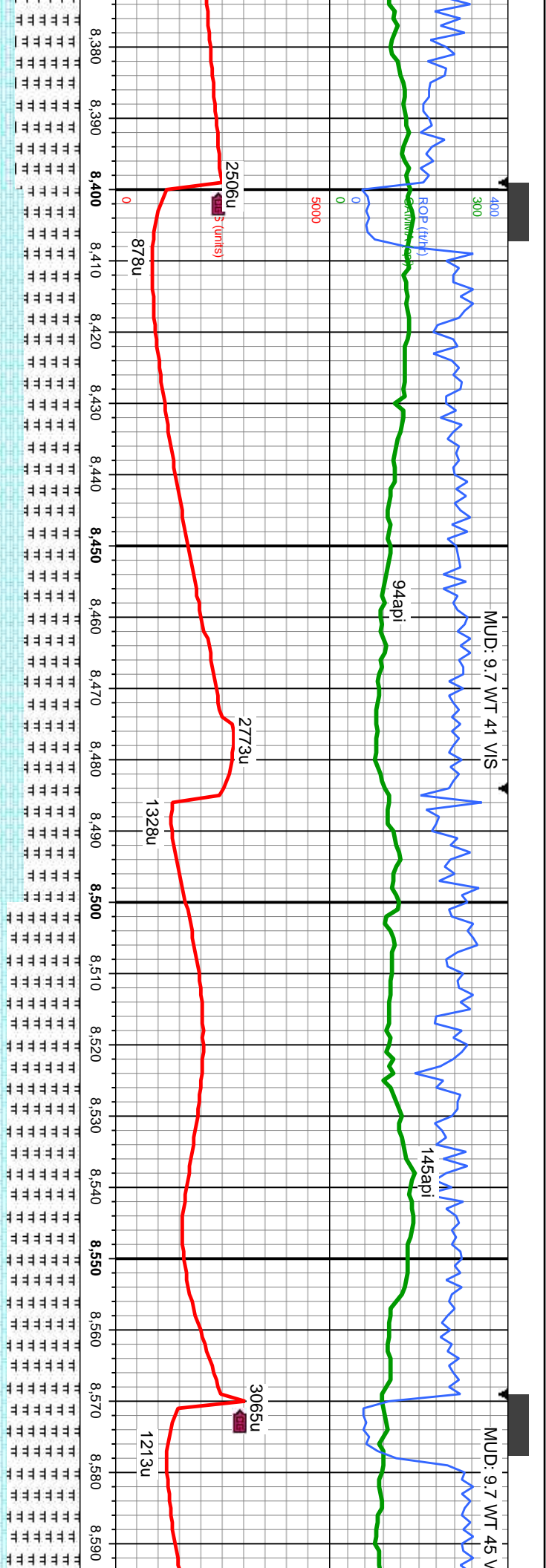
MD: 8,164 '
TVD: 7,013.83 '
Inclination: 91.41 °
Azimuth: 269.85 °
VS: 245.06 '

MD: 8,249 '
TVD: 7,012.19 '
Inclination: 90.8 °
Azimuth: 270.2 °
VS: 330.03 '

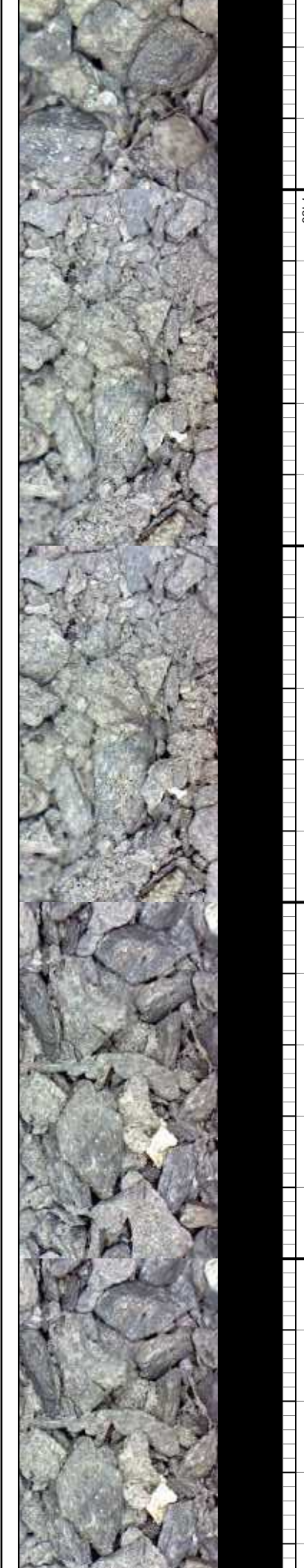
MD: 8,335 '
TVD: 7,010.99 '
Inclination: 90.8 °
Azimuth: 269.33 °
VS: 416.02 '

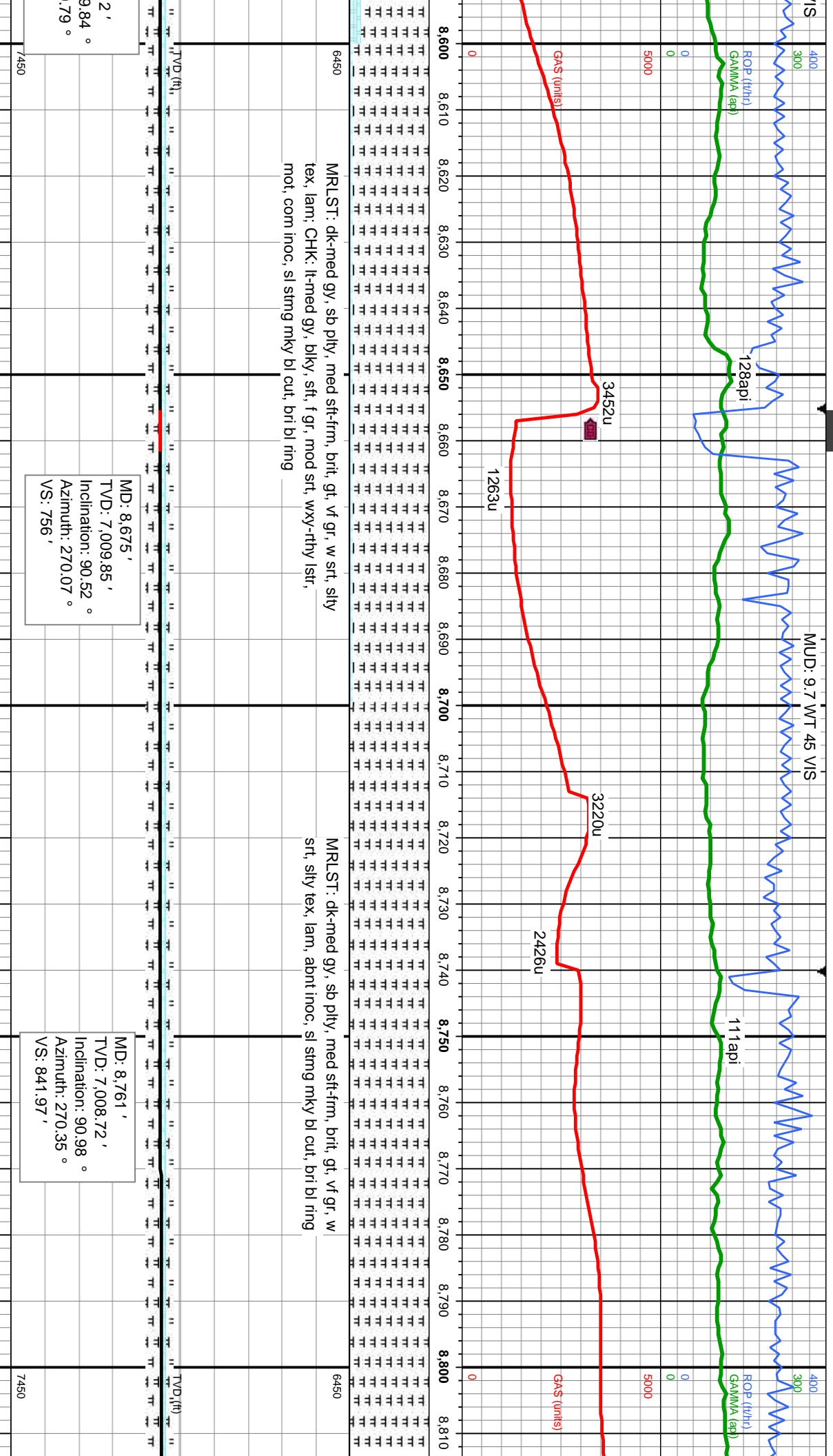
TVD (ft)
7450

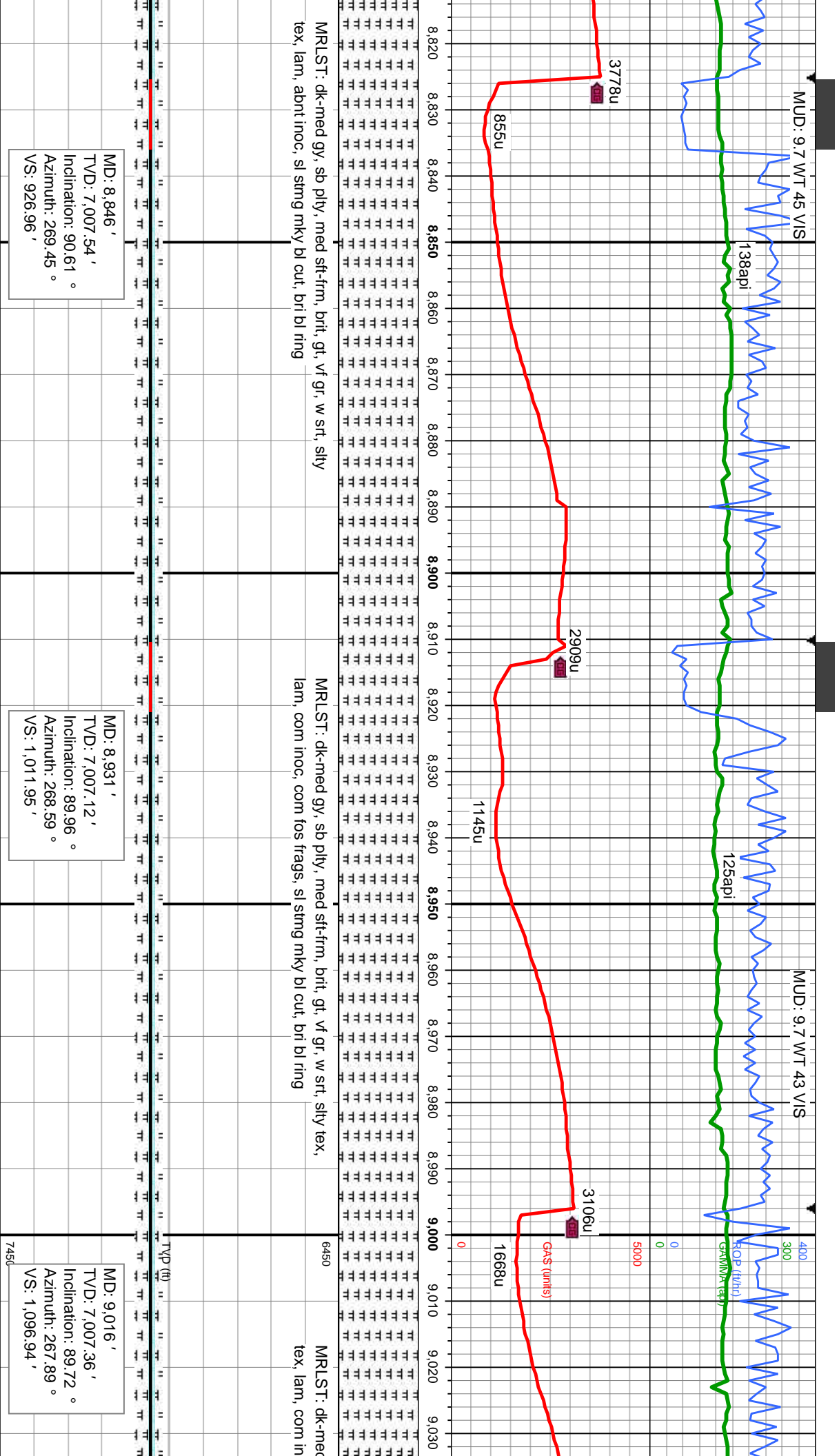


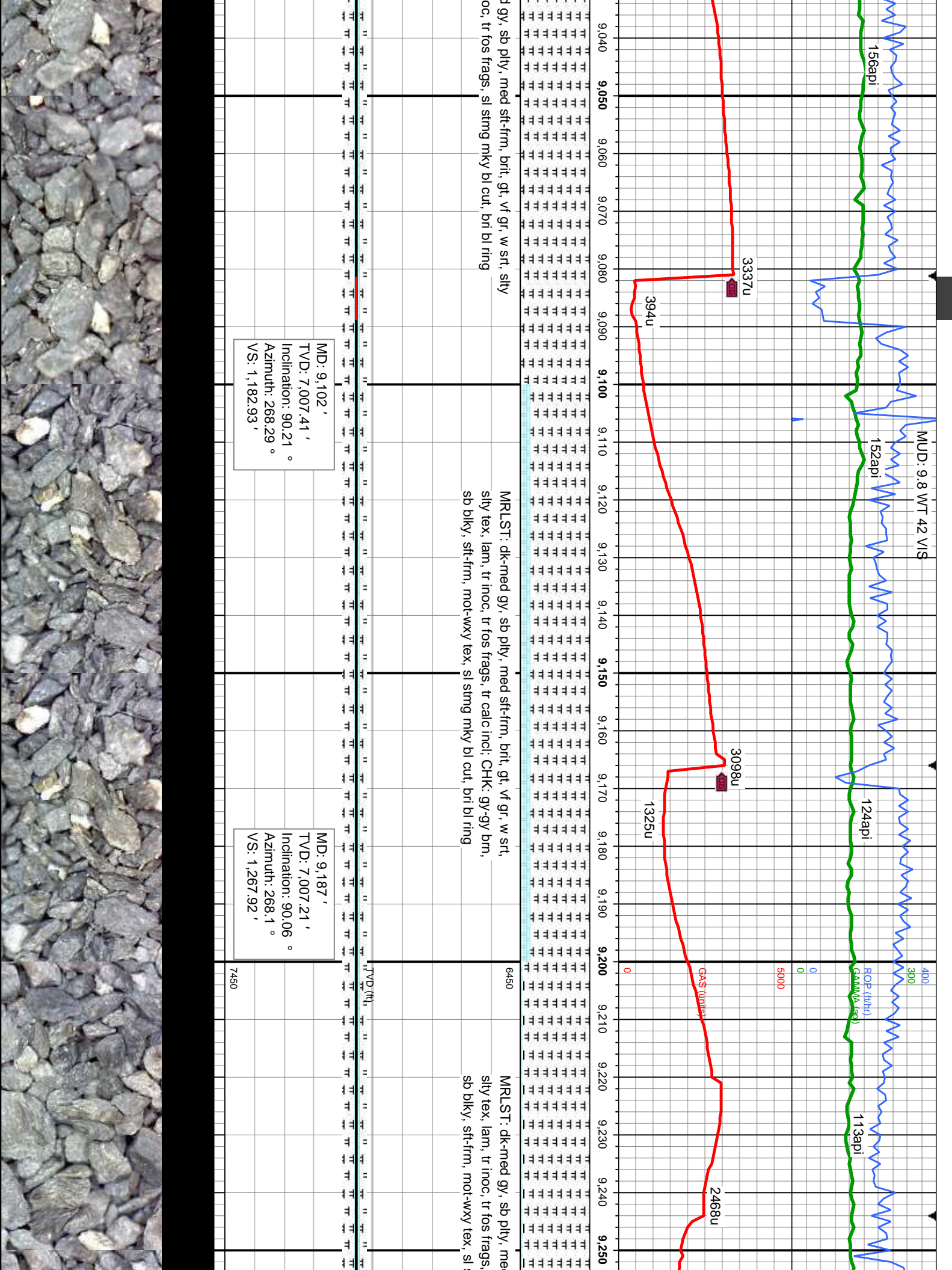


w srt, xy-rthy	6450	MRLST: dk-med gy, sb pily, med sft-fm, brit, gt, vf gr, w srt, sily tex, lam; CHK: lt-med gy, blk, sft, f gr, mod srt, wxy-rthy lstr, mot, abnt inoc, sl sting mky bl cut, bri bl ring	MD: 8,420 ' TVD: 7,010.2 ' Inclination: 90.27 ° Azimuth: 269.37 ° VS: 501.01 '
	7450		
		MRLST: dk-med gy, sb pily, med sft-fm, brit, gt, vf gr, w srt, sily tex, lam; CHK: lt-med gy, blk, sft, f gr, mod srt, wxy-rthy lstr, mot, abnt inoc, sl sting mky bl cut, bri bl ring	MD: 8,505 ' TVD: 7,010.1 ' Inclination: 90 ° Azimuth: 268.76 ° VS: 586.01 '
		MRLST: dk-med gy, sb pily, med sft-fm, brit, gt, vf gr, w srt, sily tex, lam; CHK: lt-med gy, blk, sft, f gr, mod srt, wxy-rthy lstr, mot, abnt inoc, sl sting mky bl cut, bri bl ring	MD: 8,590 ' TVD: 7,010.1 ' Inclination: 89 ° Azimuth: 269 ° VS: 671.01 '

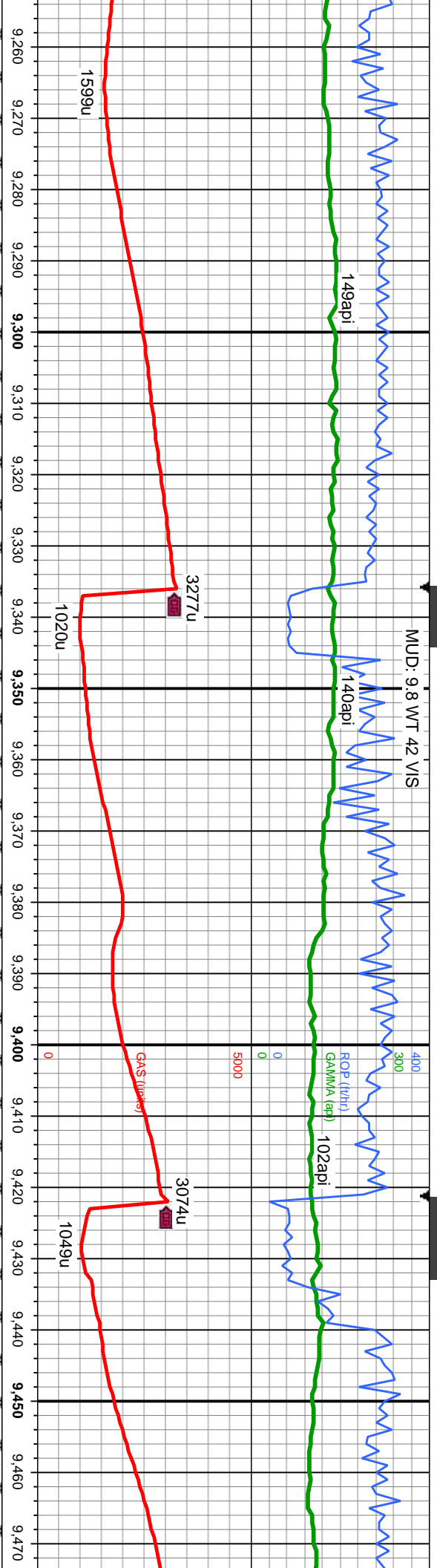








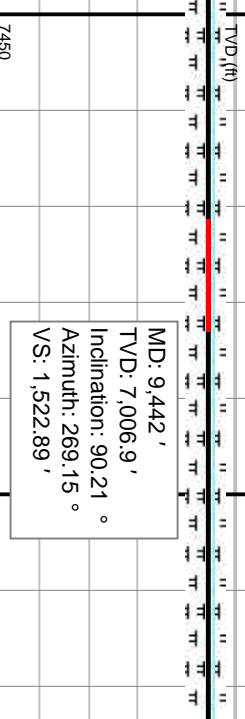
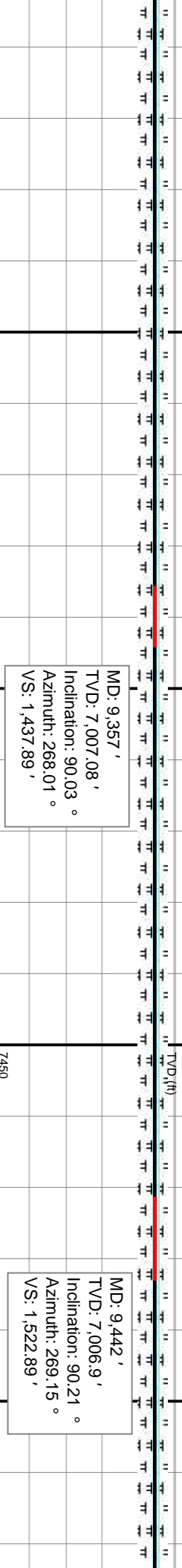
MUD: 9.8 WT 42 VIS

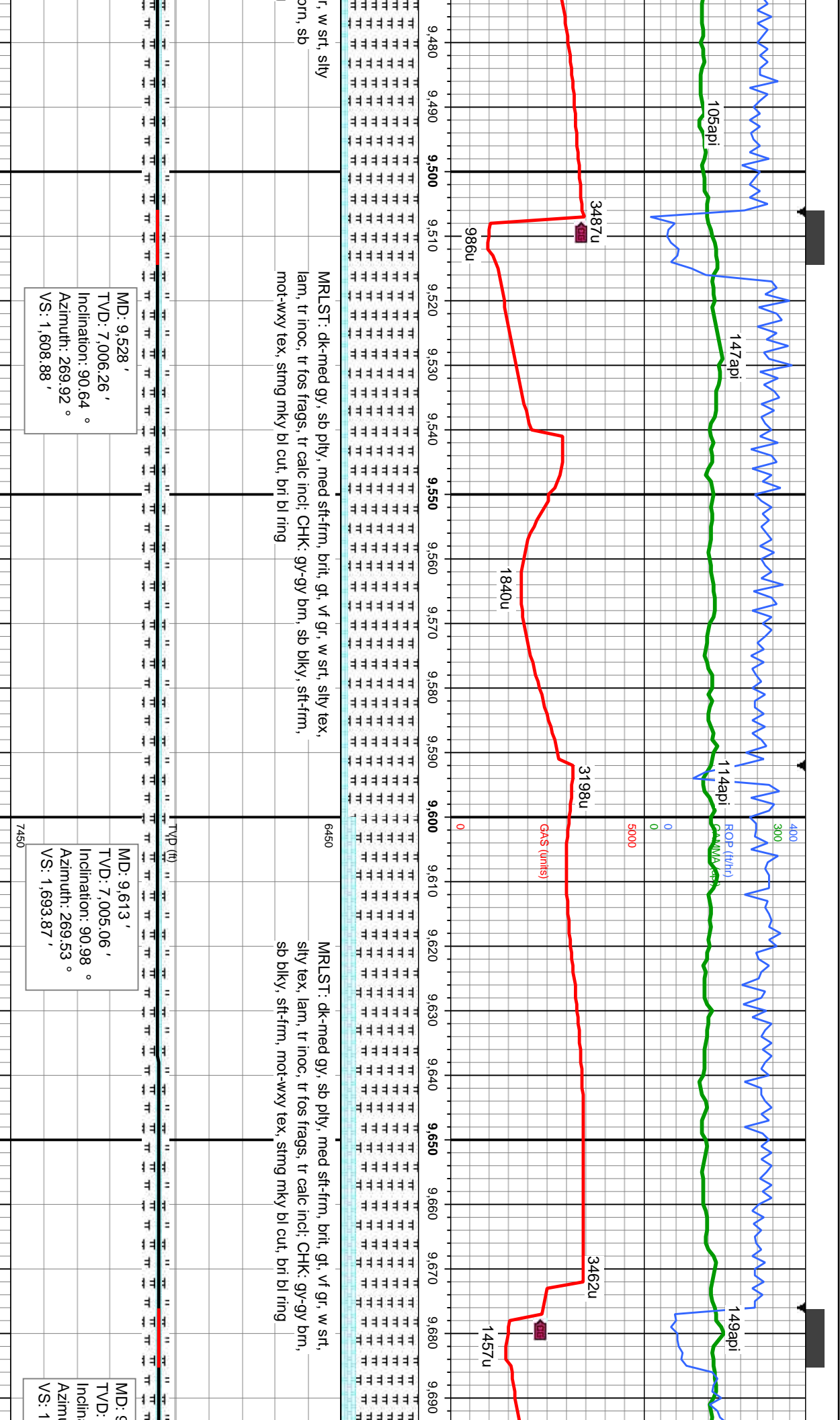


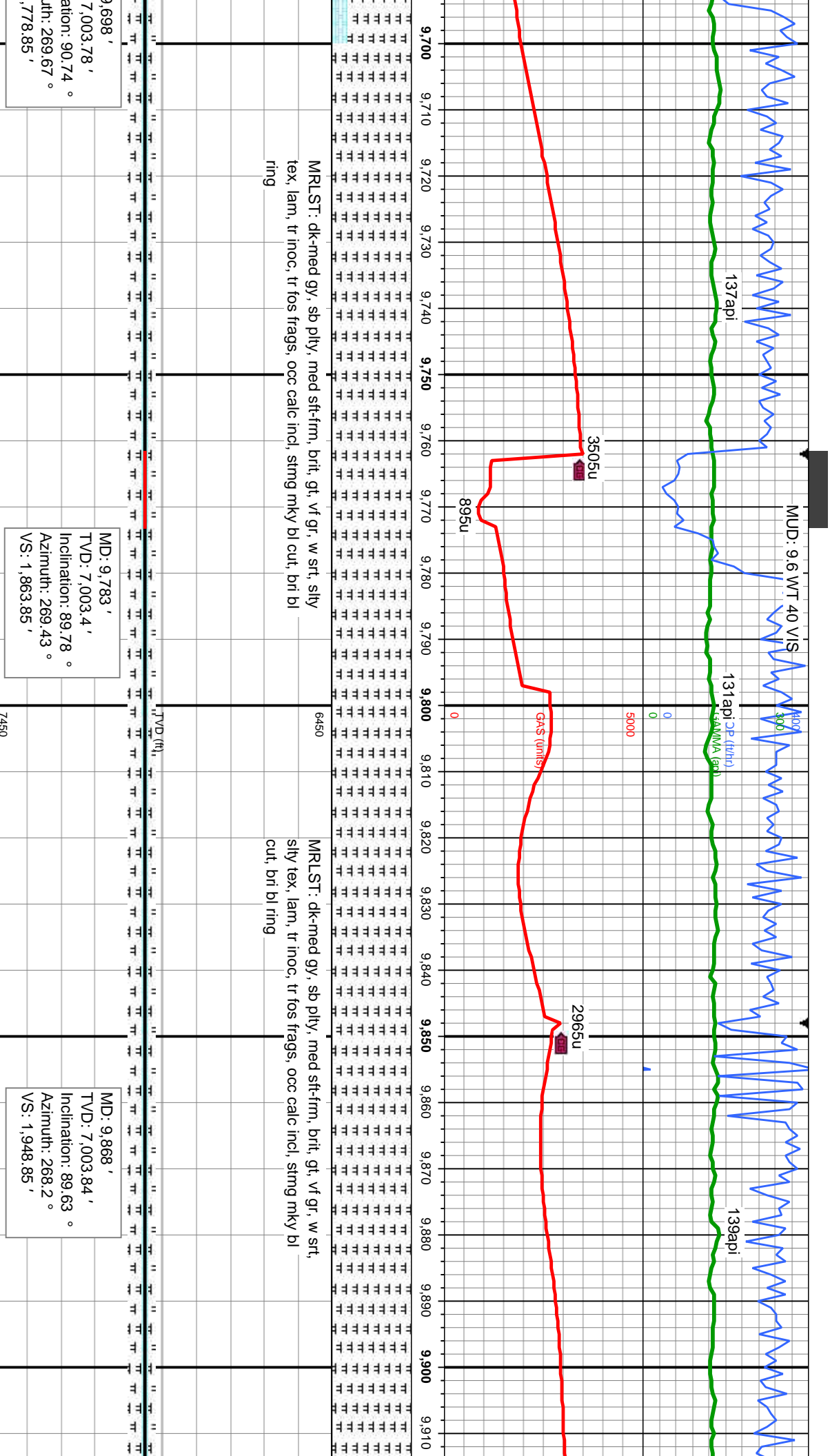
d sft-frm, brit, gt, vf gr, w sft,
tr calc incl, CHK: gy-gy brn,
stimg mky bl cut, bri bl ring

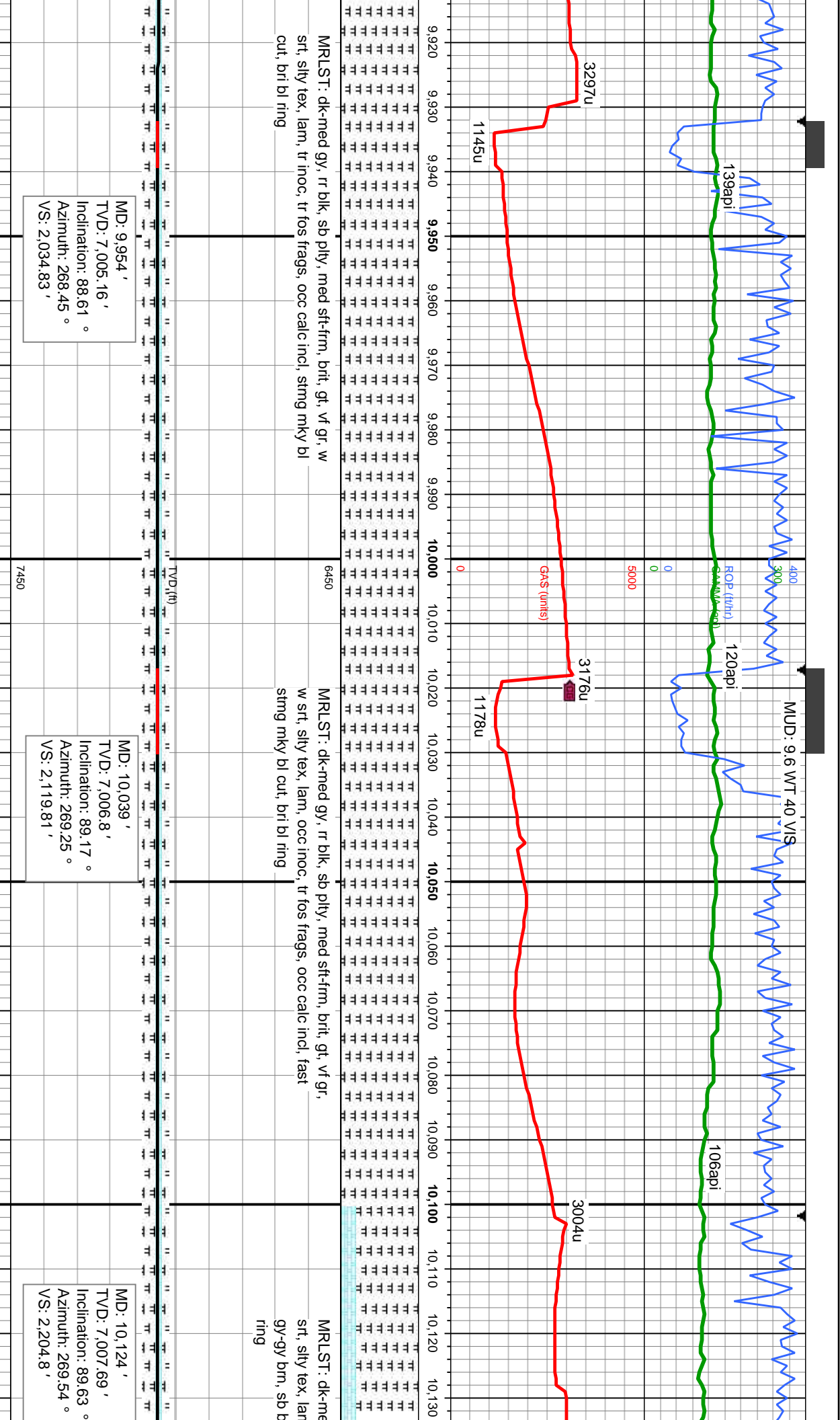
MRLST: dk-med gy, sb ply, med sft-frm, brit, gt, vf gr, w sft, silty
tex, lam, tr inoc, tr fos frags, tr calc incl, CHK: gy-gy brn, sb
biky, sft-frm, mot-wxy tex, stimg mky bl cut, bri bl ring

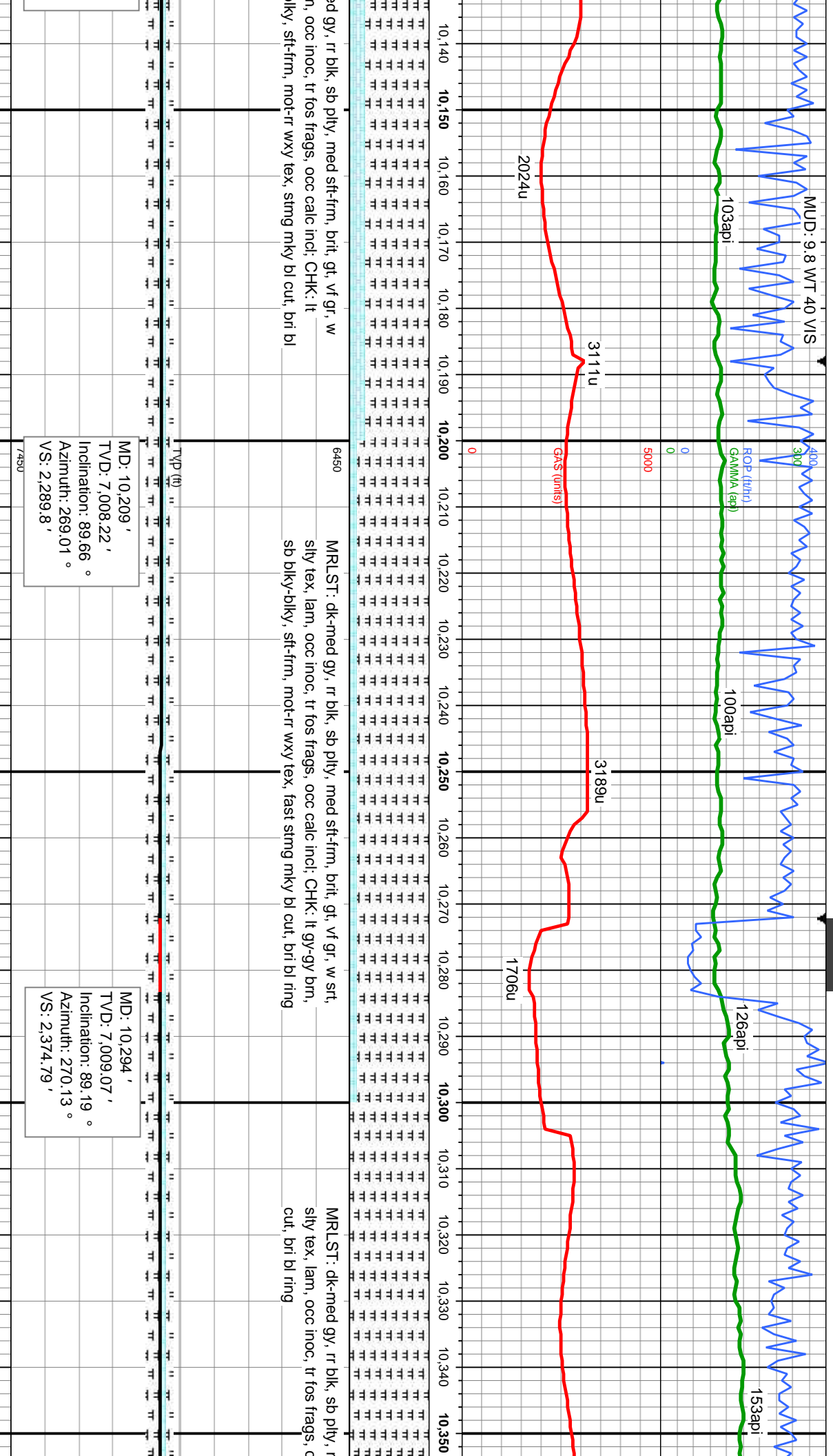
6450 MRLST: dk-med gy, sb ply, med sft-frm, brit, gt, vf gr
tex, lam, tr inoc, tr fos frags, tr calc incl, CHK: gy-gy
biky, sft-frm, mot-wxy tex, stimg mky bl cut, bri bl ring







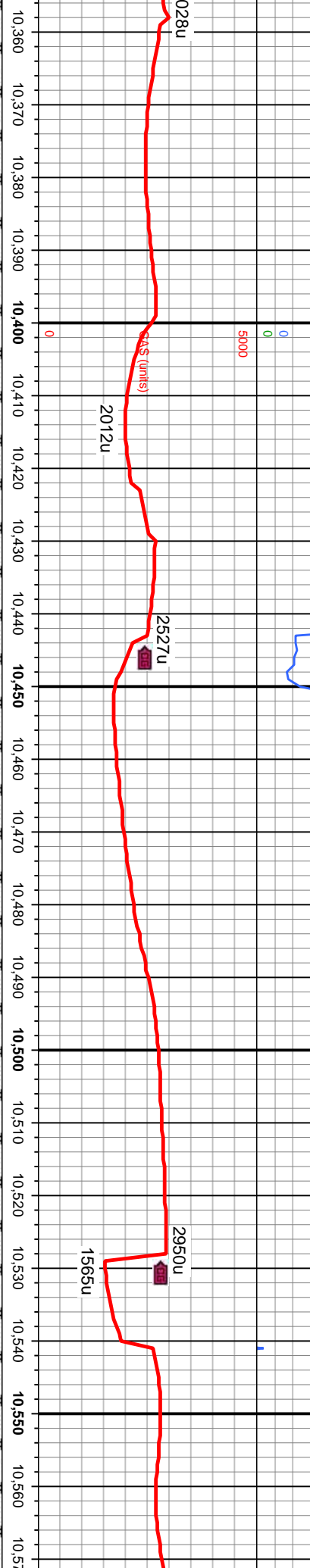
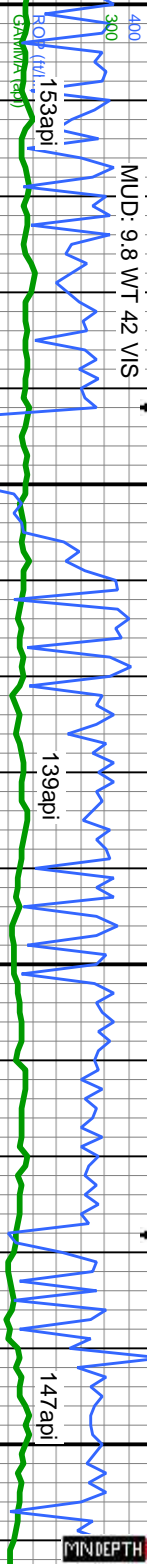




MUD: 9.8 WT 42 VIS

07/31/20

MINDEPTH



med sft-frn, brit, gt, vf gr, w srt,
occ calc incl, fast stimg mky bl

6450

MRLST: dk-med gy, occ blk, sb ply, med sft-frn, brit, gt-rthy, vf
gr, w srt, silty tex, lam, occ inoc, tr fos frags, occ calc incl, fast
stimg mky bl cut, bri bl ring

MRLST: dk-med gy, occ blk, sb ply, med sft-frn, brit,
w srt, silty tex, lam, occ inoc, tr fos frags, occ calc incl
gy-gy brn, sb blk, sft, wxy-mot tex, fast stimg mky bl

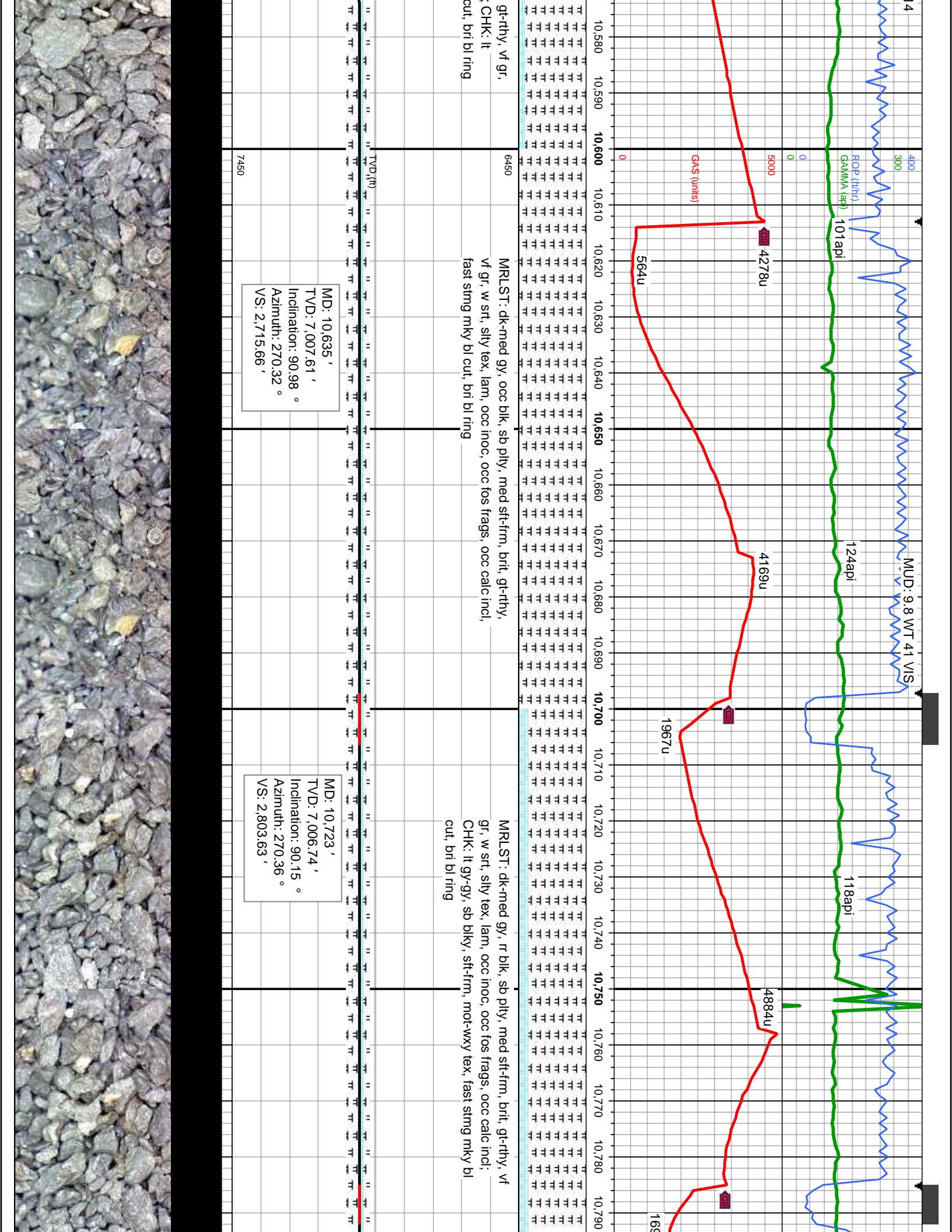
MD: 10,380 '
TVD: 7,010.06 '
Inclination: 89.5 °
Azimuth: 269.65 °
VS: 2,460.78 '

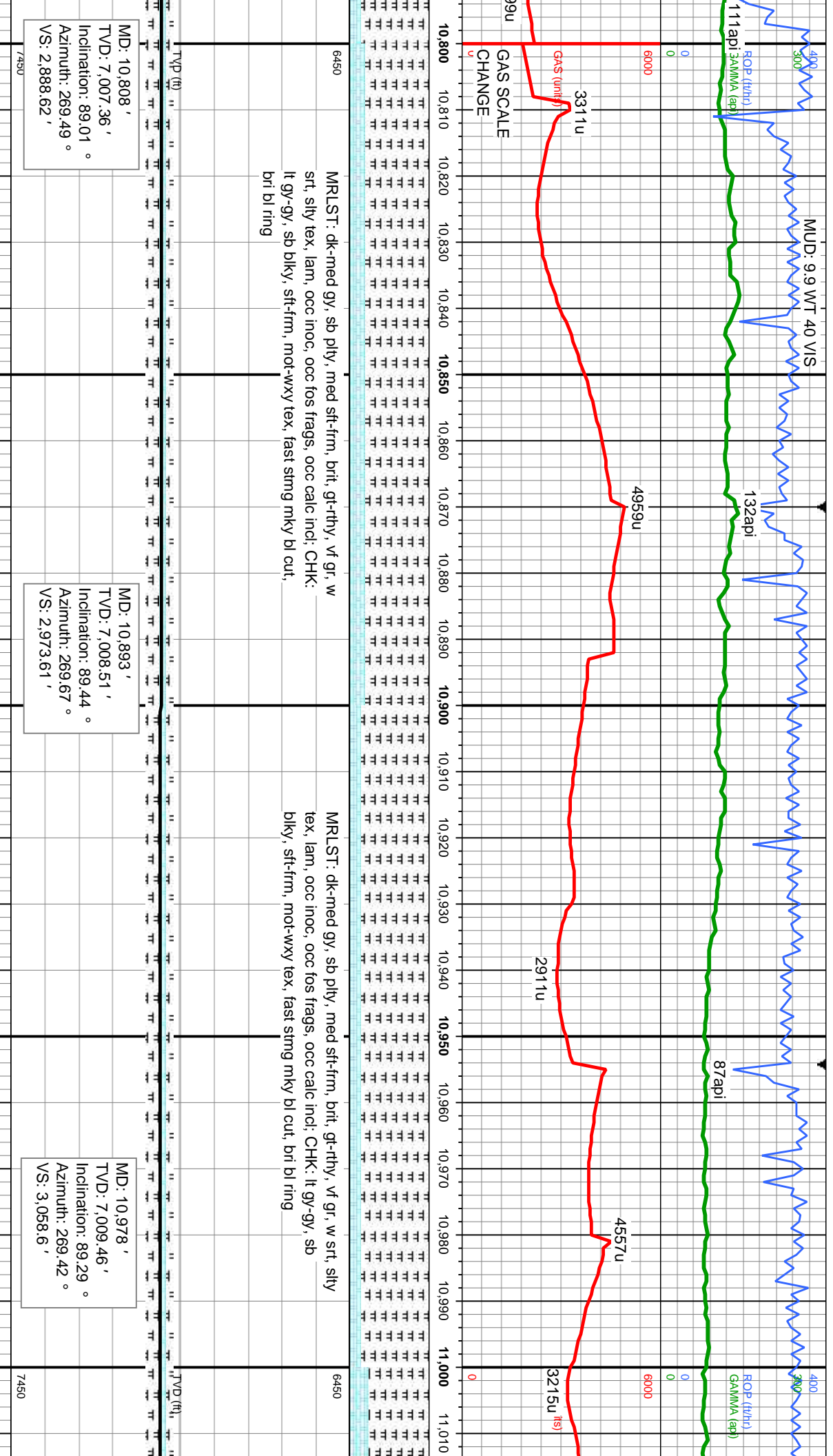
7450

MD: 10,465 '
TVD: 7,010.02 '
Inclination: 90.55 °
Azimuth: 270.99 °
VS: 2,545.75 '

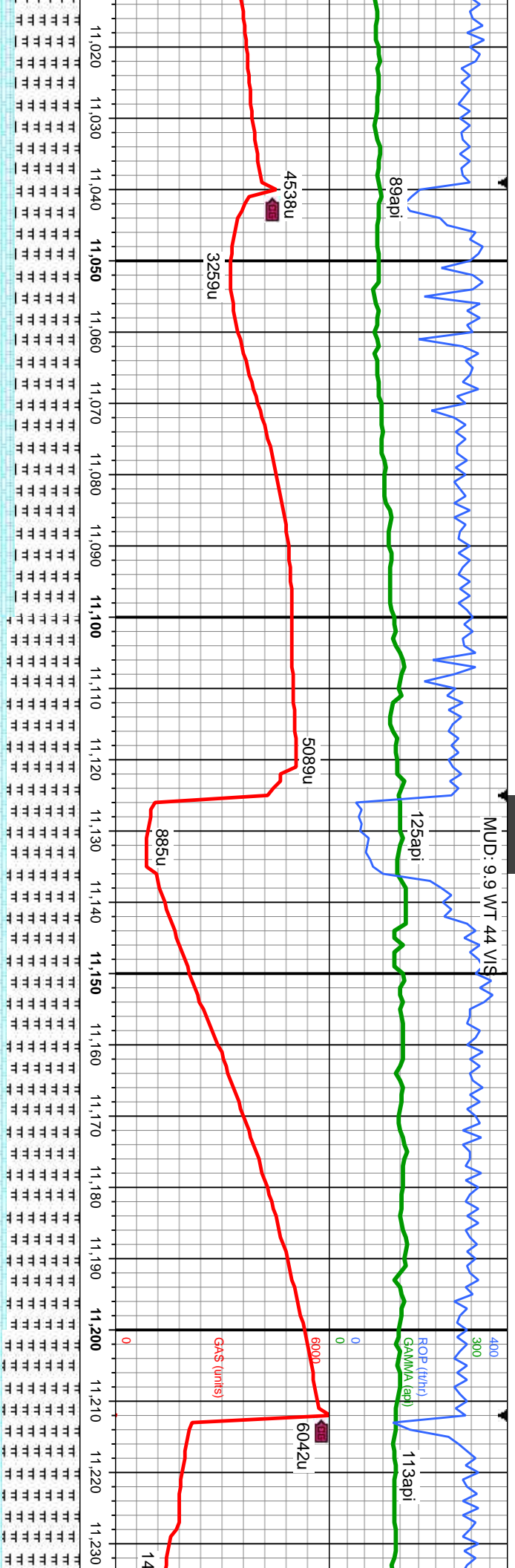
MD: 10,550 '
TVD: 7,008.97 '
Inclination: 90.86 °
Azimuth: 270.91 °
VS: 2,630.7 '







MUD: 9.9 WT 44 VIS



MRLST: dk-med gy, sb ply, med sft-fm, brit, gt-rthy, vf gr, w
srt, silty tex, lam, occ inoc, tr calc incl; CHK: lt
gy-gy, sb blkly, sft-fm, mot-wxy tex, fast stmg mky bl cut, bri
bl ring

MRLST: dk-med gy, sb ply, med sft-fm, brit, gt-rthy, vf gr, w
srt, silty tex, lam, occ inoc, occ fos frags, rr calc incl; CHK: lt
gy-gy, sb blkly, sft-fm, mot-wxy tex, stmg mky bl cut, bri bl ring

MRLST: dk-med
silty tex, lam, o
mot-wxy tex, s

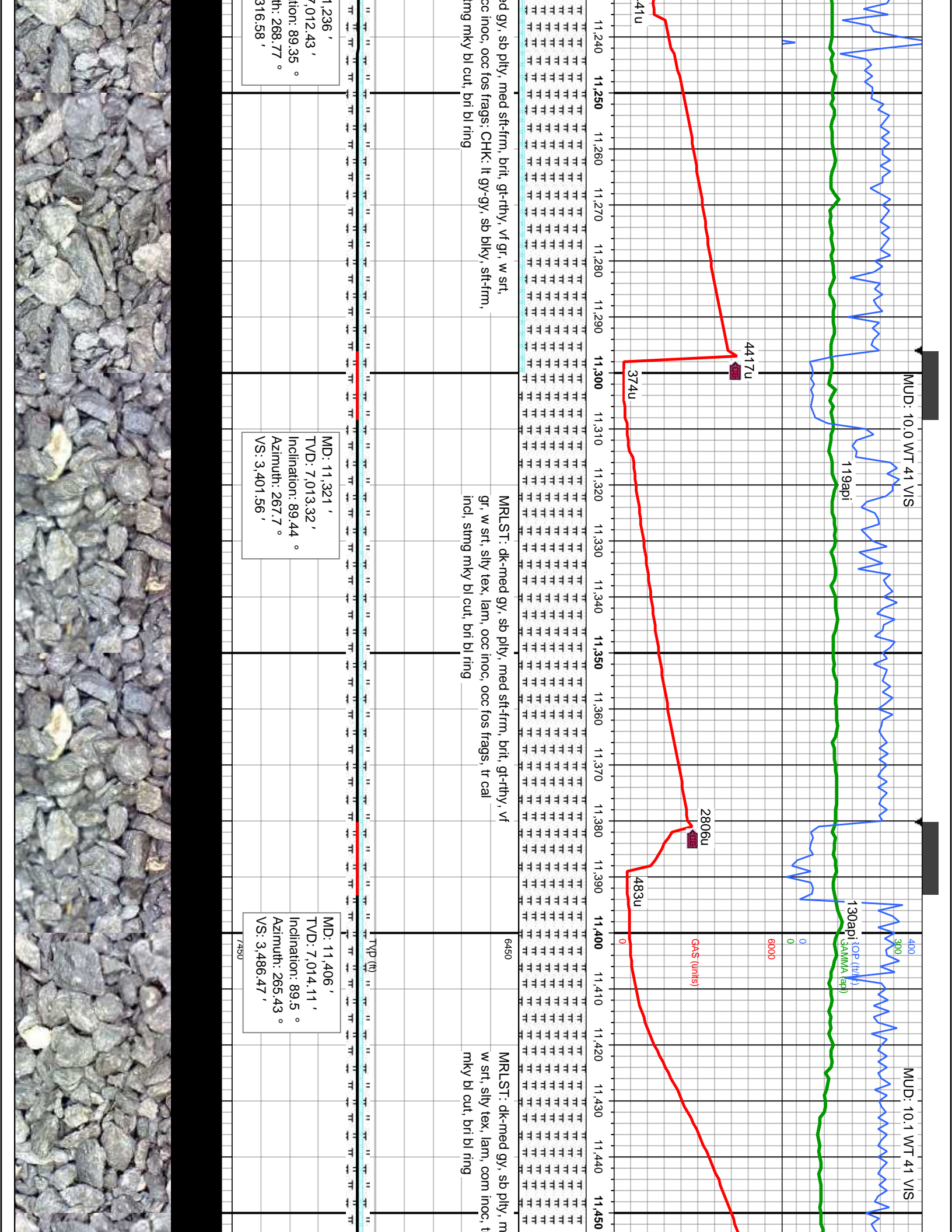
MD: 11,063 '
TVD: 7,010.67 '
Inclination: 89.07 °
Azimuth: 269.66 °
VS: 3,143.59 '

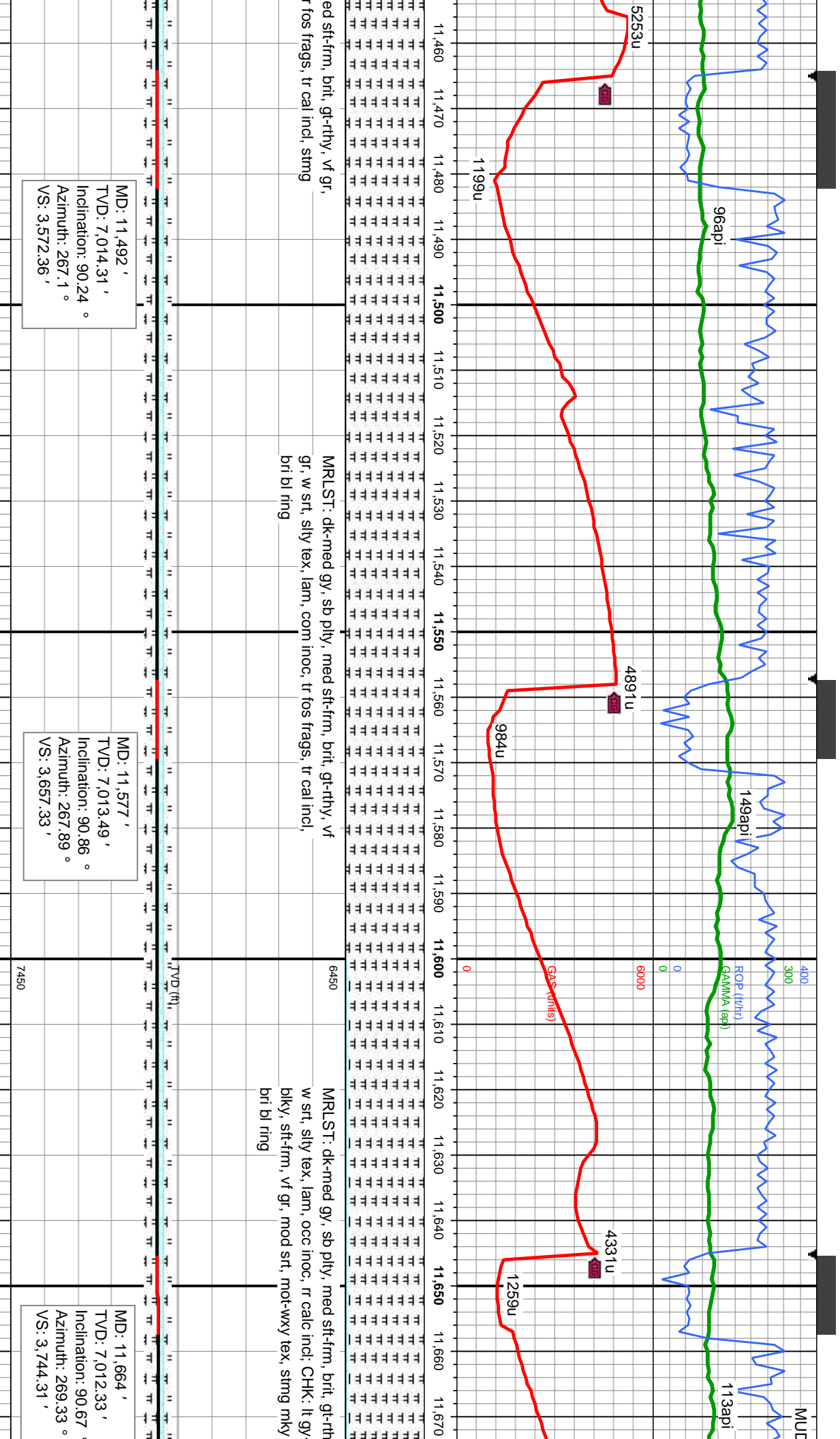
MD: 11,151 '
TVD: 7,011.67 '
Inclination: 89.63 °
Azimuth: 269.02 °
VS: 3,231.58 '

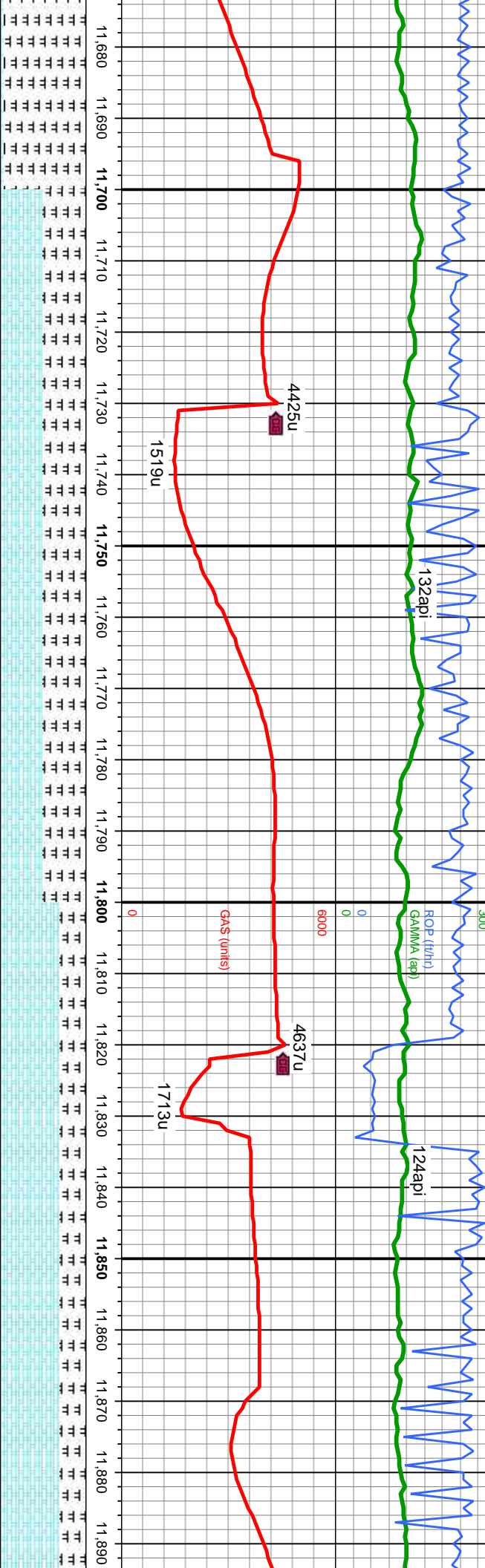
7450

MD: 11,151 '
TVD: 7,011.67 '
Inclination: 89.63 °
Azimuth: 269.02 °
VS: 3,231.58 '









gy, vf gr, gy, sb bl cut, MRLST: dk-med gy, sb pily, med sft-fm, brit, gt-rthy, vf gr, w srt, sily tex, lam, tr inoc, rr calc incl, CHK: lt gy-gy, sb blk, sft-fm, vf gr, mod srt, mot-wxy tex, sting mky bl cut, bri bl ring

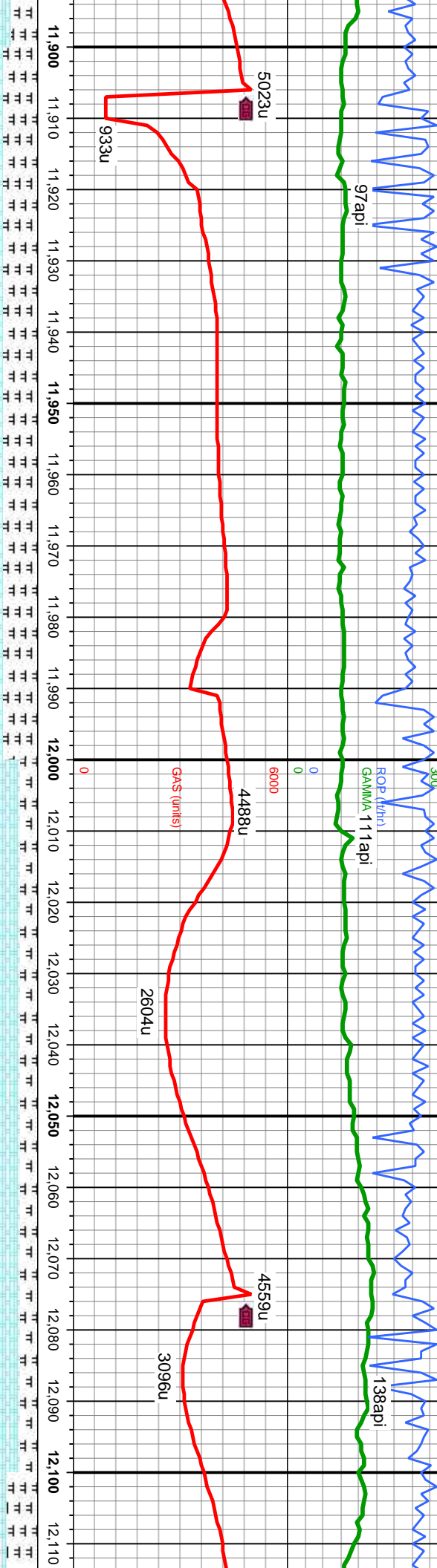
MD: 11,754' TVD: 7,011.01' Inclination: 91.01° Azimuth: 269.26° VS: 3,834.3'

MD: 11,839' TVD: 7,010.19' Inclination: 90.09° Azimuth: 269.15° VS: 3,919.3'



/S

MUD: 10.1 WT 40 VIS



CHK: lt gy-gy, sb blk, sft-fm, vf gr, mod srt, mot-wxy tex;
MRLST: dk-med gy, sb plty, med sft-fm, brit, gt-rthy, vf gr, w
srt, silty tex, lam, stmg mky bl cut, bri bl ring

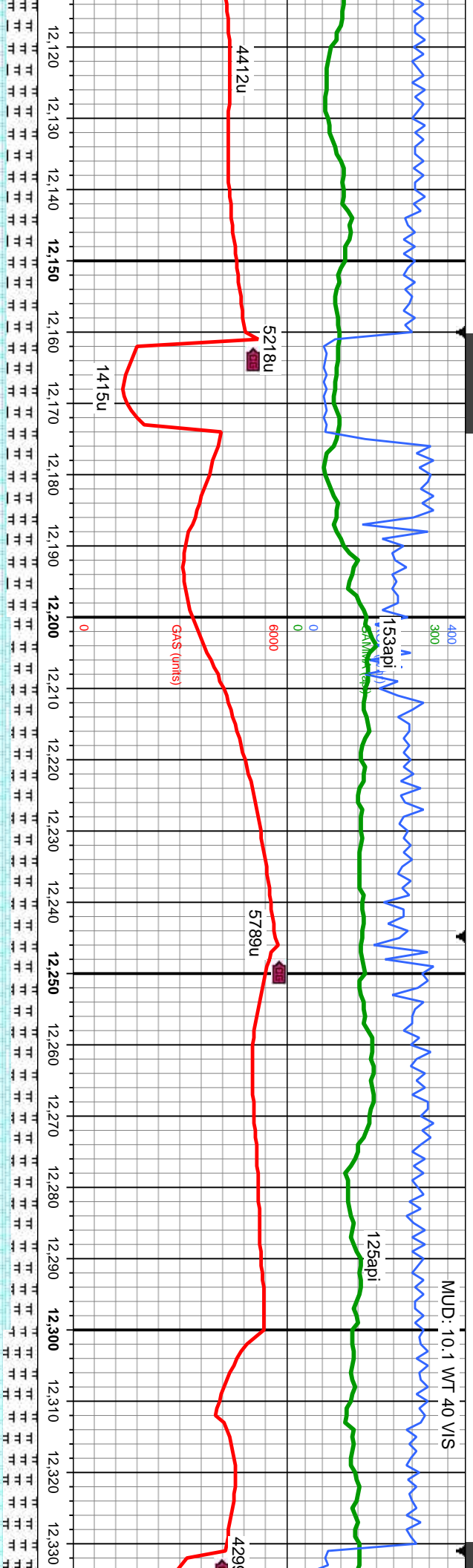
CHK: lt-med gy-gy, sb blk, sft-fm, vf gr, mod srt,
mot-wxy tex; MRLST: dk-med gy, sb plty, med sft-fm,
brit, gt-rthy, vf gr, w srt, silty tex, lam, stmg mky bl cut, bri
bl ring

MD: 11,924 '
TVD: 7,009.63 '
Inclination: 90.67 °
Azimuth: 269.44 °
VS: 4,004.3 '

MD: 12,094 '
TVD: 7,007.54 '
Inclination: 90.92 °
Azimuth: 268.99 °
VS: 4,174.28 '



MUD: 10.1 WT 40 VIS



CHK: lt-med gy-gy, sb blk, sft-fm, vf gr, mod srt, mot-wxy tex; MRLST: dk-med gy, sb ply, med sft-fm, brit, gt-rthy, vf gr, w srt, silty tex, lam, tr bent wi pyr strg, sting mky bl cut, bri bl ring

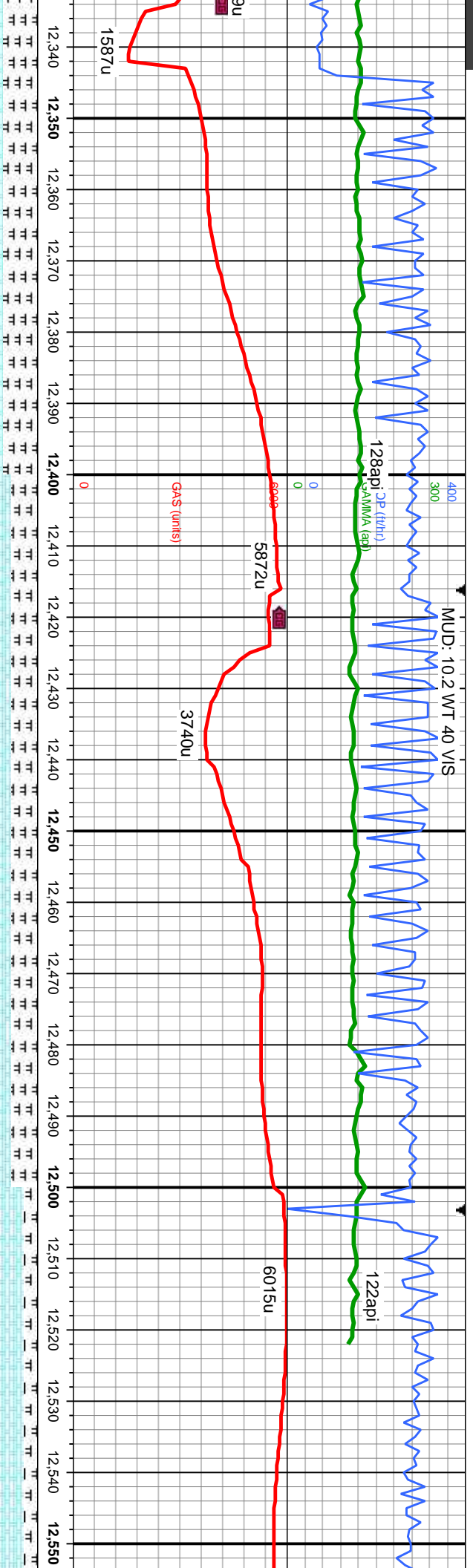
MD: 12,180 '
TVD: 7,006.99 '
Inclination: 89.9 °
Azimuth: 268.04 °
VS: 4,255.43 '

CHK: lt-med gy-gy brn, sb blk, sft-fm, vf gr, mod srt, mot-wxy tex; MRLST: dk-med gy, sb ply, med sft-fm, brit, gt-rthy, vf gr, w srt, silty tex, lam, tr bent, tr fos frags, sting mky bl cut, bri bl ring

MD: 12,265 '
TVD: 7,006.68 '
Inclination: 90.52 °
Azimuth: 267.91 °
VS: 4,340.41 '

CHK: lt-med mot-wxy tex; brit, gt-rthy, mky bl cut, l





gy-gy brn, sb blk, sft-fm, vf gr, mod srt,
MRLST: dk-med gy, sb pty, med sft-fm,
vf gr, w srt, sily tex, lam, rr fos frags, stmg
ori bl ring

CHK: lt-med gy-gy brn, sb blk, sft-fm, vf gr, mod srt,
mot-wxy tex: MRLST: dk-med gy, sb pty, med sft-fm, brit,
gt-rthy, vf gr, w srt, sily tex, lam, rr fos frags, stmg mky bl
cut, bri bl ring

CHK: lt-med gy-gy brn, sb b
srt, mot-wxy tex: MRLST: dk
sft-fm, brit, gt-rthy, vf gr, w
frags, stmg mky bl cut, bri b

MD: 12,350 '
TVD: 7,006.25 '
Inclination: 90.06 °
Azimuth: 268.78 °
VS: 4,425.4 '

MD: 12,514 '
TVD: 7,006.12 '
Inclination: 90.03 °
Azimuth: 268.09 °
VS: -56.44 '



