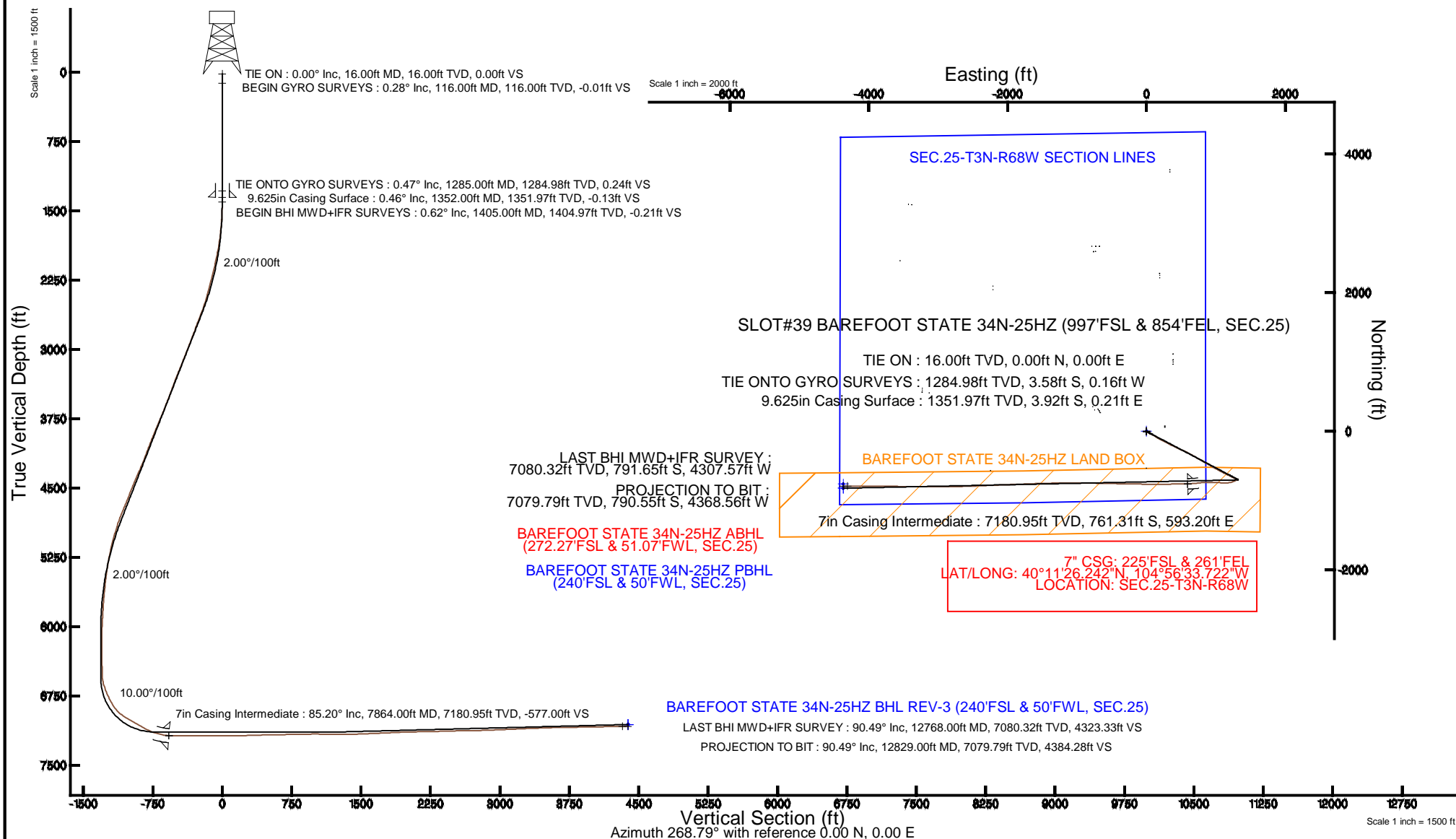


KERR-MCGEE OIL & GAS ONSHORE LP

Location: COLORADO Slot: SLOT#39 BAREFOOT STATE 34N-25HZ (997'FSL & 854'FEL, SEC.25)
 Field: WELD COUNTY (KERR MCGEE) Well: BAREFOOT STATE 34N-25HZ
 Facility: SEC.25-T3N-R68W Wellbore: BAREFOOT STATE 34N-25HZ PWB

Plot reference wellpath is BAREFOOT STATE 34N-25HZ (REV-B.1) PWP

True vertical depths are referenced to XTREME 24 (16'KB) (RKB)	Grid System: NAD83 / Lambert Colorado SP, Northern Zone (501), US feet
Measured depths are referenced to XTREME 24 (16'KB) (RKB)	North Reference: True north
XTREME 24 (16'KB) (RKB) to Mean Sea Level: 4880 feet	Scale: True distance
Mean Sea Level to Mud line (At Slot: SLOT#39 BAREFOOT STATE 34N-25HZ (997'FSL & 854'FEL, SEC.25)): 0 feet	Depths are in feet
Coordinates are in feet referenced to Slot.	Created by: robale01 on 9/11/2014



REFERENCE WELLPATH IDENTIFICATION			
Operator	KERR-MCGEE OIL & GAS ONSHORE LP	Slot	SLOT#39 BAREFOOT STATE 34N-25HZ (997'FSL & 854'FEL, SEC.25)
Area	COLORADO	Well	BAREFOOT STATE 34N-25HZ
Field	WELD COUNTY (KERR MCGEE)	Wellbore	BAREFOOT STATE 34N-25HZ AWB
Facility	SEC.25-T3N-R68W		

REPORT SETUP INFORMATION			
Projection System	NAD83 / Lambert Colorado SP, Northern Zone (501), US feet	Software System	WellArchitect® 4.0.0
North Reference	True	User	Robiale01
Scale	0.999957	Report Generated	9/11/2014 at 1:25:25 PM
Convergence at slot	n/a	Database/Source file	WellArchitectDB/BAREFOOT_STATE_34N-25HZ_AWB.xml

WELLPATH LOCATION						
	Local coordinates		Grid coordinates		Geographic coordinates	
	North[ft]	East[ft]	Easting[US ft]	Northing[US ft]	Latitude	Longitude
Slot Location	-2683.96	677.80	3155094.05	1313533.26	40°11'33.765"N	104°56'41.366"W
Facility Reference Pt			3154399.57	1316212.82	40°12'00.288"N	104°56'50.100"W
Field Reference Pt			3197771.84	1268891.29	40°04'09.600"N	104°47'36.000"W

WELLPATH DATUM			
Calculation method	Minimum curvature	XTREME 24 (16'KB) (RKB) to Facility Vertical Datum	4880.00ft
Horizontal Reference Pt	Slot	XTREME 24 (16'KB) (RKB) to Mean Sea Level	4880.00ft
Vertical Reference Pt	XTREME 24 (16'KB) (RKB)	XTREME 24 (16'KB) (RKB) to Mud Line at Slot (SLOT#39 BAREFOOT STATE 34N-25HZ (997'FSL & 854'FEL, SEC.25))	4880.00ft
MD Reference Pt	XTREME 24 (16'KB) (RKB)	Section Origin	N 0.00, E 0.00 ft
Field Vertical Reference	Mean Sea Level	Section Azimuth	259.74°

REFERENCE WELLPATH IDENTIFICATION			
Operator	KERR-MCGEE OIL & GAS ONSHORE LP	Slot	SLOT#39 BAREFOOT STATE 34N-25HZ (997'FSL & 854'FEL, SEC.25)
Area	COLORADO	Well	BAREFOOT STATE 34N-25HZ
Field	WELD COUNTY (KERR MCGEE)	Wellbore	BAREFOOT STATE 34N-25HZ AWB
Facility	SEC.25-T3N-R68W		

WELLPATH DATA (148 stations) † = interpolated/extrapolated station										
MD [ft]	Inclination [°]	Azimuth [°]	TVD [ft]	Vert Sect [ft]	North [ft]	East [ft]	Latitude	Longitude	DLS [°/100ft]	Comments
0.00†	0.000	1.020	0.00	0.00	0.00	0.00	40°11'33.765"N	104°56'41.366"W	0.00	
16.00	0.000	1.020	16.00	0.00	0.00	0.00	40°11'33.765"N	104°56'41.366"W	0.00	TIE ON
116.00	0.280	1.020	116.00	-0.05	0.24	0.00	40°11'33.767"N	104°56'41.366"W	0.28	BEGIN GYRO SURVEYS
216.00	0.120	292.370	216.00	-0.01	0.53	-0.09	40°11'33.770"N	104°56'41.367"W	0.26	
316.00	0.360	260.110	316.00	0.39	0.51	-0.49	40°11'33.770"N	104°56'41.372"W	0.27	
416.00	0.400	251.420	416.00	1.05	0.35	-1.13	40°11'33.768"N	104°56'41.381"W	0.07	
516.00	0.420	204.910	515.99	1.61	-0.09	-1.62	40°11'33.764"N	104°56'41.387"W	0.32	
616.00	0.370	218.120	615.99	2.06	-0.68	-1.97	40°11'33.758"N	104°56'41.391"W	0.10	
716.00	0.410	205.910	715.99	2.52	-1.26	-2.33	40°11'33.753"N	104°56'41.396"W	0.09	
816.00	0.360	164.240	815.99	2.70	-1.88	-2.40	40°11'33.746"N	104°56'41.397"W	0.28	
916.00	0.300	152.550	915.99	2.59	-2.42	-2.19	40°11'33.741"N	104°56'41.394"W	0.09	
1016.00	0.310	141.580	1015.98	2.38	-2.86	-1.91	40°11'33.737"N	104°56'41.391"W	0.06	
1116.00	0.540	97.420	1115.98	1.81	-3.13	-1.27	40°11'33.734"N	104°56'41.382"W	0.38	
1216.00	0.320	127.880	1215.98	1.17	-3.36	-0.58	40°11'33.732"N	104°56'41.374"W	0.31	
1285.00	0.470	109.890	1284.98	0.80	-3.58	-0.16	40°11'33.730"N	104°56'41.368"W	0.28	TIE ONTO GYRO SURVEYS
1405.00	0.620	179.900	1404.97	0.49	-4.40	0.30	40°11'33.722"N	104°56'41.362"W	0.53	BEGIN BHI MWD+IFR SURVEYS
1499.00	2.390	129.710	1498.94	-0.68	-6.16	1.81	40°11'33.704"N	104°56'41.343"W	2.18	
1594.00	4.790	128.470	1593.75	-4.57	-9.89	6.44	40°11'33.667"N	104°56'41.283"W	2.53	
1688.00	6.490	124.670	1687.29	-10.92	-15.35	13.88	40°11'33.613"N	104°56'41.187"W	1.85	
1782.00	8.720	118.130	1780.46	-20.27	-21.74	24.54	40°11'33.550"N	104°56'41.050"W	2.54	
1876.00	10.640	118.980	1873.11	-32.58	-29.30	38.41	40°11'33.475"N	104°56'40.871"W	2.05	
1970.00	12.560	118.180	1965.19	-47.31	-38.33	55.01	40°11'33.386"N	104°56'40.657"W	2.05	
2066.00	14.370	114.600	2058.55	-65.26	-48.22	75.05	40°11'33.288"N	104°56'40.399"W	2.07	
2157.00	14.800	114.440	2146.62	-84.08	-57.73	95.90	40°11'33.194"N	104°56'40.130"W	0.47	
2249.00	15.430	120.050	2235.44	-103.08	-68.72	117.19	40°11'33.086"N	104°56'39.856"W	1.73	
2341.00	17.580	120.670	2323.64	-122.91	-81.94	139.74	40°11'32.955"N	104°56'39.565"W	2.34	
2433.00	18.600	121.660	2411.09	-144.33	-96.73	164.18	40°11'32.809"N	104°56'39.250"W	1.16	
2525.00	20.590	119.760	2497.76	-167.64	-112.46	190.71	40°11'32.654"N	104°56'38.909"W	2.27	
2617.00	22.740	118.220	2583.26	-193.95	-128.90	220.43	40°11'32.491"N	104°56'38.526"W	2.42	
2708.00	23.660	117.270	2666.90	-222.20	-145.59	252.15	40°11'32.326"N	104°56'38.117"W	1.09	
2800.00	23.120	116.970	2751.34	-251.22	-162.24	284.66	40°11'32.162"N	104°56'37.698"W	0.60	
2891.00	23.140	118.380	2835.02	-279.42	-178.84	316.32	40°11'31.998"N	104°56'37.290"W	0.61	
2983.00	23.760	117.130	2919.43	-308.26	-195.88	348.72	40°11'31.829"N	104°56'36.873"W	0.86	
3075.00	23.410	115.750	3003.74	-337.77	-212.27	381.67	40°11'31.667"N	104°56'36.448"W	0.71	
3167.00	24.110	115.960	3087.94	-367.72	-228.44	415.03	40°11'31.508"N	104°56'36.018"W	0.77	
3259.00	24.680	114.550	3171.73	-398.65	-244.65	449.39	40°11'31.347"N	104°56'35.575"W	0.89	
3351.00	23.820	115.060	3255.61	-429.58	-260.49	483.69	40°11'31.191"N	104°56'35.133"W	0.96	
3443.00	22.360	113.750	3340.24	-459.24	-275.41	516.54	40°11'31.043"N	104°56'34.710"W	1.68	
3533.00	22.040	114.810	3423.57	-487.26	-289.39	547.54	40°11'30.905"N	104°56'34.311"W	0.57	
3625.00	23.610	117.190	3508.36	-516.01	-305.06	579.60	40°11'30.750"N	104°56'33.897"W	1.98	
3717.00	24.370	117.460	3592.41	-545.66	-322.23	612.83	40°11'30.581"N	104°56'33.469"W	0.83	
3810.00	25.180	118.180	3676.85	-576.33	-340.42	647.30	40°11'30.401"N	104°56'33.025"W	0.93	
3903.00	25.990	119.080	3760.74	-607.59	-359.67	682.54	40°11'30.211"N	104°56'32.571"W	0.97	
3996.00	25.870	120.050	3844.37	-638.82	-379.73	717.91	40°11'30.012"N	104°56'32.115"W	0.47	
4089.00	24.870	121.090	3928.40	-668.98	-399.99	752.22	40°11'29.812"N	104°56'31.673"W	1.18	

REFERENCE WELLPATH IDENTIFICATION			
Operator	KERR-MCGEE OIL & GAS ONSHORE LP	Slot	SLOT#39 BAREFOOT STATE 34N-25HZ (997'FSL & 854'FEL, SEC.25)
Area	COLORADO	Well	BAREFOOT STATE 34N-25HZ
Field	WELD COUNTY (KERR MCGEE)	Wellbore	BAREFOOT STATE 34N-25HZ AWB
Facility	SEC.25-T3N-R68W		

WELLPATH DATA (148 stations) † = interpolated/extrapolated station										
MD [ft]	Inclination [°]	Azimuth [°]	TVD [ft]	Vert Sect [ft]	North [ft]	East [ft]	Latitude	Longitude	DLS [°/100ft]	Comments
4182.00	25.390	120.370	4012.60	-698.79	-420.17	786.17	40°11'29.613"N	104°56'31.236"W	0.65	
4275.00	23.220	119.730	4097.35	-727.97	-439.34	819.30	40°11'29.423"N	104°56'30.809"W	2.35	
4368.00	23.660	118.500	4182.68	-756.57	-457.34	851.62	40°11'29.245"N	104°56'30.392"W	0.71	
4461.00	26.360	119.630	4266.95	-786.97	-476.45	885.97	40°11'29.057"N	104°56'29.950"W	2.95	
4554.00	27.760	119.270	4349.77	-819.52	-497.25	922.81	40°11'28.851"N	104°56'29.475"W	1.52	
4647.00	26.560	119.860	4432.51	-852.13	-518.19	959.74	40°11'28.644"N	104°56'28.999"W	1.32	
4740.00	24.410	120.560	4516.46	-882.57	-538.32	994.32	40°11'28.445"N	104°56'28.553"W	2.33	
4825.00	24.380	118.580	4593.87	-909.53	-555.64	1024.85	40°11'28.274"N	104°56'28.160"W	0.96	
4910.00	25.230	116.700	4671.03	-937.67	-572.17	1056.44	40°11'28.111"N	104°56'27.753"W	1.36	
4995.00	25.200	117.200	4747.93	-966.51	-588.58	1088.72	40°11'27.948"N	104°56'27.337"W	0.25	
5080.00	22.580	116.570	4825.64	-993.94	-604.16	1119.42	40°11'27.794"N	104°56'26.942"W	3.10	
5165.00	20.010	116.260	4904.83	-1018.70	-617.89	1147.06	40°11'27.659"N	104°56'26.585"W	3.03	
5250.00	17.400	116.140	4985.33	-1040.62	-629.93	1171.52	40°11'27.540"N	104°56'26.270"W	3.07	
5335.00	16.800	115.970	5066.58	-1060.76	-640.91	1193.97	40°11'27.431"N	104°56'25.981"W	0.71	
5420.00	15.480	116.870	5148.23	-1079.71	-651.41	1215.13	40°11'27.327"N	104°56'25.708"W	1.58	
5505.00	12.710	116.750	5230.66	-1096.23	-660.75	1233.60	40°11'27.235"N	104°56'25.470"W	3.26	
5590.00	10.450	115.300	5313.92	-1109.97	-668.26	1248.93	40°11'27.161"N	104°56'25.273"W	2.68	
5675.00	9.280	112.730	5397.66	-1121.99	-674.20	1262.22	40°11'27.102"N	104°56'25.102"W	1.47	
5761.00	7.350	121.190	5482.76	-1131.93	-679.73	1273.32	40°11'27.048"N	104°56'24.959"W	2.65	
5846.00	7.000	119.920	5567.09	-1139.96	-685.13	1282.46	40°11'26.994"N	104°56'24.841"W	0.45	
5931.00	5.650	118.940	5651.57	-1147.16	-689.74	1290.61	40°11'26.949"N	104°56'24.736"W	1.59	
6016.00	4.750	103.850	5736.23	-1153.62	-692.60	1297.69	40°11'26.920"N	104°56'24.645"W	1.92	
6102.00	3.860	97.370	5821.99	-1159.63	-693.83	1304.02	40°11'26.908"N	104°56'24.563"W	1.18	
6187.00	3.170	90.230	5906.83	-1164.66	-694.20	1309.21	40°11'26.905"N	104°56'24.496"W	0.96	
6272.00	2.740	77.270	5991.71	-1169.00	-693.76	1313.54	40°11'26.909"N	104°56'24.440"W	0.93	
6357.00	2.230	62.360	6076.63	-1172.61	-692.55	1316.98	40°11'26.921"N	104°56'24.396"W	0.96	
6442.00	0.550	232.120	6161.62	-1173.83	-692.03	1318.13	40°11'26.926"N	104°56'24.381"W	3.26	
6612.00	1.290	237.190	6331.59	-1171.34	-693.57	1315.88	40°11'26.911"N	104°56'24.410"W	0.44	
6698.00	1.640	212.450	6417.57	-1169.61	-695.13	1314.40	40°11'26.895"N	104°56'24.429"W	0.83	
6783.00	2.030	201.110	6502.52	-1168.00	-697.56	1313.21	40°11'26.871"N	104°56'24.445"W	0.62	
6867.00	10.360	249.200	6585.99	-1159.78	-701.64	1305.59	40°11'26.831"N	104°56'24.543"W	10.87	
6953.00	22.440	243.110	6668.34	-1136.37	-711.85	1283.64	40°11'26.730"N	104°56'24.826"W	14.17	
7038.00	26.250	247.650	6745.78	-1102.43	-726.34	1251.77	40°11'26.587"N	104°56'25.236"W	4.99	
7123.00	28.530	255.280	6821.27	-1063.79	-738.65	1214.74	40°11'26.465"N	104°56'25.713"W	4.92	
7208.00	37.970	267.430	6892.35	-1017.49	-745.01	1168.83	40°11'26.403"N	104°56'26.305"W	13.55	
7293.00	54.040	271.750	6951.21	-957.52	-745.13	1107.91	40°11'26.401"N	104°56'27.090"W	19.25	
7378.00	58.290	272.670	6998.53	-888.60	-742.39	1037.38	40°11'26.428"N	104°56'27.999"W	5.08	
7463.00	60.200	271.090	7041.99	-817.19	-740.01	964.38	40°11'26.452"N	104°56'28.939"W	2.76	
7548.00	61.610	269.930	7083.33	-744.23	-739.35	890.11	40°11'26.459"N	104°56'29.896"W	2.04	
7633.00	64.350	266.150	7121.95	-669.32	-741.97	814.46	40°11'26.433"N	104°56'30.871"W	5.11	
7718.00	73.230	263.390	7152.68	-590.46	-749.24	735.64	40°11'26.361"N	104°56'31.887"W	10.88	
7810.00	79.970	265.410	7173.99	-501.32	-757.95	646.63	40°11'26.275"N	104°56'33.034"W	7.63	
7864.00†	85.204	267.372	7180.95	-448.16	-761.31	593.20	40°11'26.242"N	104°56'33.722"W	10.34	7" CASING POINT
7926.00	91.220	269.590	7182.89	-386.94	-762.95	531.29	40°11'26.225"N	104°56'34.520"W	10.34	
7969.00	91.260	269.460	7181.95	-344.57	-763.31	488.30	40°11'26.222"N	104°56'35.074"W	0.32	

REFERENCE WELLPATH IDENTIFICATION			
Operator	KERR-MCGEE OIL & GAS ONSHORE LP	Slot	SLOT#39 BAREFOOT STATE 34N-25HZ (997'FSL & 854'FEL, SEC.25)
Area	COLORADO	Well	BAREFOOT STATE 34N-25HZ
Field	WELD COUNTY (KERR MCGEE)	Wellbore	BAREFOOT STATE 34N-25HZ AWB
Facility	SEC.25-T3N-R68W		

WELLPATH DATA (148 stations)										
MD [ft]	Inclination [°]	Azimuth [°]	TVD [ft]	Vert Sect [ft]	North [ft]	East [ft]	Latitude	Longitude	DLS [°/100ft]	Comments
8054.00	90.700	270.040	7180.50	-260.88	-763.68	403.31	40°11'26.218"N	104°56'36.169"W	0.95	
8139.00	90.300	269.800	7179.76	-177.22	-763.80	318.32	40°11'26.217"N	104°56'37.264"W	0.55	
8224.00	90.460	270.120	7179.20	-93.57	-763.86	233.32	40°11'26.217"N	104°56'38.360"W	0.42	
8309.00	88.920	269.450	7179.66	-9.88	-764.18	148.33	40°11'26.213"N	104°56'39.455"W	1.98	
8394.00	89.690	269.190	7180.69	73.93	-765.18	63.34	40°11'26.203"N	104°56'40.550"W	0.96	
8475.00	89.930	271.420	7180.95	153.55	-764.75	-17.66	40°11'26.208"N	104°56'41.593"W	2.77	
8562.00	89.870	271.340	7181.11	238.77	-762.66	-104.63	40°11'26.228"N	104°56'42.714"W	0.11	
8647.00	91.230	270.870	7180.29	322.09	-761.02	-189.61	40°11'26.245"N	104°56'43.809"W	1.69	
8732.00	91.530	270.600	7178.24	405.51	-759.93	-274.58	40°11'26.255"N	104°56'44.904"W	0.47	
8817.00	91.810	271.220	7175.77	488.86	-758.58	-359.53	40°11'26.269"N	104°56'45.999"W	0.80	
8902.00	91.840	271.440	7173.06	572.09	-756.61	-444.46	40°11'26.288"N	104°56'47.093"W	0.26	
8987.00	91.230	270.950	7170.78	655.37	-754.84	-529.41	40°11'26.306"N	104°56'48.188"W	0.92	
9072.00	90.550	271.000	7169.46	738.73	-753.39	-614.39	40°11'26.320"N	104°56'49.283"W	0.80	
9157.00	90.890	271.580	7168.39	822.00	-751.48	-699.36	40°11'26.339"N	104°56'50.378"W	0.79	
9242.00	91.420	272.100	7166.68	905.10	-748.75	-784.30	40°11'26.366"N	104°56'51.472"W	0.87	
9328.00	90.980	271.720	7164.88	989.14	-745.88	-870.23	40°11'26.394"N	104°56'52.579"W	0.68	
9413.00	90.460	270.540	7163.81	1072.46	-744.21	-955.21	40°11'26.411"N	104°56'53.674"W	1.52	
9498.00	89.050	269.090	7164.18	1156.15	-744.48	-1040.20	40°11'26.408"N	104°56'54.770"W	2.38	
9583.00	88.520	269.420	7165.98	1239.96	-745.59	-1125.18	40°11'26.397"N	104°56'55.864"W	0.73	
9668.00	89.200	268.770	7167.67	1323.81	-746.93	-1210.15	40°11'26.384"N	104°56'56.959"W	1.11	
9754.00	90.250	268.820	7168.08	1408.74	-748.74	-1296.13	40°11'26.366"N	104°56'58.067"W	1.22	
9838.00	91.760	268.620	7166.61	1491.69	-750.61	-1380.09	40°11'26.347"N	104°56'59.149"W	1.81	
9924.00	92.550	268.380	7163.37	1576.63	-752.86	-1466.00	40°11'26.325"N	104°57'00.256"W	0.96	
10009.00	92.610	268.410	7159.55	1660.58	-755.24	-1550.88	40°11'26.301"N	104°57'01.350"W	0.08	
10094.00	92.360	267.820	7155.86	1744.59	-758.03	-1635.75	40°11'26.274"N	104°57'02.444"W	0.75	
10179.00	92.460	267.330	7152.29	1828.73	-761.63	-1720.60	40°11'26.238"N	104°57'03.537"W	0.59	
10264.00	92.490	267.920	7148.62	1912.84	-765.15	-1805.45	40°11'26.203"N	104°57'04.630"W	0.69	
10349.00	92.490	268.350	7144.92	1996.85	-767.91	-1890.32	40°11'26.176"N	104°57'05.724"W	0.51	
10434.00	91.720	267.670	7141.80	2080.91	-770.86	-1975.21	40°11'26.147"N	104°57'06.818"W	1.21	
10519.00	91.470	267.670	7139.44	2165.07	-774.31	-2060.11	40°11'26.112"N	104°57'07.912"W	0.29	
10604.00	91.290	267.600	7137.39	2249.24	-777.82	-2145.01	40°11'26.078"N	104°57'09.006"W	0.23	
10689.00	90.980	267.960	7135.71	2333.39	-781.11	-2229.93	40°11'26.045"N	104°57'10.100"W	0.56	
10774.00	91.230	267.470	7134.07	2417.55	-784.50	-2314.85	40°11'26.012"N	104°57'11.194"W	0.65	
10859.00	91.290	267.580	7132.20	2501.75	-788.17	-2399.75	40°11'25.975"N	104°57'12.288"W	0.15	
10944.00	91.960	267.930	7129.79	2585.88	-791.50	-2484.65	40°11'25.942"N	104°57'13.382"W	0.89	
11029.00	91.530	268.230	7127.20	2669.94	-794.34	-2569.56	40°11'25.914"N	104°57'14.476"W	0.62	
11115.00	90.310	267.790	7125.82	2755.04	-797.33	-2655.50	40°11'25.884"N	104°57'15.583"W	1.51	
11200.00	90.890	268.940	7124.93	2839.07	-799.76	-2740.46	40°11'25.860"N	104°57'16.678"W	1.52	
11285.00	91.970	269.530	7122.81	2922.88	-800.89	-2825.42	40°11'25.849"N	104°57'17.773"W	1.45	
11370.00	92.530	269.390	7119.47	3006.59	-801.69	-2910.35	40°11'25.841"N	104°57'18.867"W	0.68	
11455.00	92.030	269.460	7116.09	3090.32	-802.54	-2995.28	40°11'25.832"N	104°57'19.962"W	0.59	
11540.00	92.680	270.180	7112.60	3173.93	-802.81	-3080.20	40°11'25.830"N	104°57'21.056"W	1.14	
11625.00	92.490	270.250	7108.76	3257.43	-802.49	-3165.12	40°11'25.833"N	104°57'22.150"W	0.24	
11711.00	92.590	270.380	7104.95	3341.89	-802.02	-3251.03	40°11'25.837"N	104°57'23.257"W	0.19	
11796.00	92.340	270.820	7101.29	3425.29	-801.13	-3335.95	40°11'25.846"N	104°57'24.351"W	0.59	

REFERENCE WELLPATH IDENTIFICATION			
Operator	KERR-MCGEE OIL & GAS ONSHORE LP	Slot	SLOT#39 BAREFOOT STATE 34N-25HZ (997'FSL & 854'FEL, SEC.25)
Area	COLORADO	Well	BAREFOOT STATE 34N-25HZ
Field	WELD COUNTY (KERR MCGEE)	Wellbore	BAREFOOT STATE 34N-25HZ AWB
Facility	SEC.25-T3N-R68W		

WELLPATH DATA (148 stations)										
MD [ft]	Inclination [°]	Azimuth [°]	TVD [ft]	Vert Sect [ft]	North [ft]	East [ft]	Latitude	Longitude	DLS [°/100ft]	Comments
11881.00	92.000	270.850	7098.08	3508.64	-799.89	-3420.88	40°11'25.858"N	104°57'25.446"W	0.40	
11966.00	91.910	270.980	7095.18	3591.98	-798.54	-3505.82	40°11'25.871"N	104°57'26.540"W	0.19	
12052.00	91.440	271.060	7092.66	3676.29	-797.01	-3591.77	40°11'25.886"N	104°57'27.648"W	0.55	
12137.00	90.520	270.740	7091.21	3759.67	-795.67	-3676.74	40°11'25.899"N	104°57'28.743"W	1.15	
12222.00	90.920	270.500	7090.14	3843.13	-794.75	-3761.73	40°11'25.908"N	104°57'29.838"W	0.55	
12307.00	91.250	269.260	7088.53	3926.79	-794.93	-3846.71	40°11'25.907"N	104°57'30.933"W	1.51	
12393.00	90.490	268.970	7087.23	4011.63	-796.26	-3932.69	40°11'25.893"N	104°57'32.041"W	0.95	
12477.00	90.860	270.530	7086.24	4094.34	-796.62	-4016.68	40°11'25.890"N	104°57'33.123"W	1.91	
12562.00	91.780	270.950	7084.28	4177.76	-795.53	-4101.65	40°11'25.900"N	104°57'34.218"W	1.19	
12647.00	91.260	270.990	7082.02	4261.10	-794.09	-4186.61	40°11'25.914"N	104°57'35.313"W	0.61	
12733.00	90.580	271.310	7080.64	4345.39	-792.36	-4272.58	40°11'25.931"N	104°57'36.420"W	0.87	
12768.00	90.490	271.030	7080.32	4379.70	-791.65	-4307.57	40°11'25.938"N	104°57'36.871"W	0.84	LAST BHI MWD+IFR SURVEY
12829.00	90.490	271.030	7079.79	4439.52	-790.55	-4368.56	40°11'25.949"N	104°57'37.657"W	0.00	PROJECTION TO BIT

HOLE & CASING SECTIONS - Ref Wellbore: BAREFOOT STATE 34N-25HZ AWB Ref Wellpath: BAREFOOT STATE 34N-25HZ AWP									
String/Diameter	Start MD [ft]	End MD [ft]	Interval [ft]	Start TVD [ft]	End TVD [ft]	Start N/S [ft]	Start E/W [ft]	End N/S [ft]	End E/W [ft]
13.5in Open Hole	16.00	1352.00	1336.00	16.00	1351.97	0.00	0.00	-3.92	0.21
9.625in Casing Surface	16.00	1352.00	1336.00	16.00	1351.97	0.00	0.00	-3.92	0.21
8.75in Open Hole	1352.00	7874.00	6522.00	1351.97	7181.70	-3.92	0.21	-761.74	583.24
7in Casing Intermediate	16.00	7864.00	7848.00	16.00	7180.95	0.00	0.00	-761.31	593.20
6.125in Open Hole	7874.00	12829.00	4955.00	7181.70	7079.79	-761.74	583.24	-790.55	-4368.56

WELLPATH COMPOSITION - Ref Wellbore: BAREFOOT STATE 34N-25HZ AWB Ref Wellpath: BAREFOOT STATE 34N-25HZ AWP				
Start MD [ft]	End MD [ft]	Positional Uncertainty Model	Log Name/Comment	Wellbore
16.00	1285.00	Generic gyro - continuous (Standard)	MS GYRO SURVEYS <116-1285>	BAREFOOT STATE 34N-25HZ AWB
1285.00	7810.00	NaviTrak (IFR)	BHI NAVITRAK MWD+IFR 8 3/4" <1405-7810>	BAREFOOT STATE 34N-25HZ AWB
7810.00	12768.00	NaviTrak (IFR)	BHI NAVITRAK MWD+IFR 6 1/8" <7926-12768>	BAREFOOT STATE 34N-25HZ AWB
12768.00	12829.00	Blind Drilling (std)	Projection to bit	BAREFOOT STATE 34N-25HZ AWB

REFERENCE WELLPATH IDENTIFICATION			
Operator	KERR-MCGEE OIL & GAS ONSHORE LP	Slot	SLOT#39 BAREFOOT STATE 34N-25HZ (997'FSL & 854'FEL, SEC.25)
Area	COLORADO	Well	BAREFOOT STATE 34N-25HZ
Field	WELD COUNTY (KERR MCGEE)	Wellbore	BAREFOOT STATE 34N-25HZ AWB
Facility	SEC.25-T3N-R68W		

WELLPATH COMMENTS				
MD [ft]	Inclination [°]	Azimuth [°]	TVD [ft]	Comment
16.00	0.000	1.020	16.00	TIE ON
116.00	0.280	1.020	116.00	BEGIN GYRO SURVEYS
1285.00	0.470	109.890	1284.98	TIE ONTO GYRO SURVEYS
1405.00	0.620	179.900	1404.97	BEGIN BHI MWD+IFR SURVEYS
7864.00	85.204	267.372	7180.95	7" CASING POINT
12768.00	90.490	271.030	7080.32	LAST BHI MWD+IFR SURVEY
12829.00	90.490	271.030	7079.79	PROJECTION TO BIT